

# Type A1

House No. : 236 & 240

238 & 242 (Mirror)

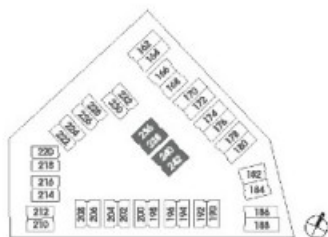
Area : 323 sqm / 3,477 sqft



BASEMENT



1ST STOREY





2ND STOREY



3RD STOREY



ROOF TERRACE

# Type A1-1

House No. : 212

Area : 330 sqm / 3,552 sqft



BASEMENT



1ST STOREY





2ND STOREY



3RD STOREY

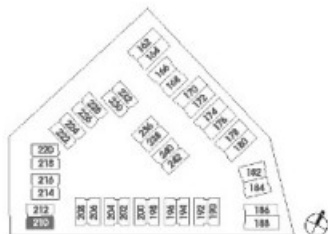


ROOF TERRACE

## Type A1-2

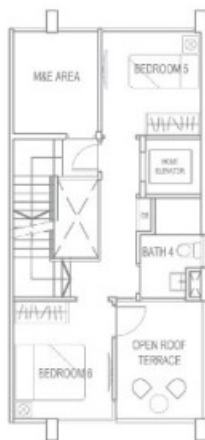
House No. : 210

House No. : 359 sqm / 3,864 sqft





2ND STOREY



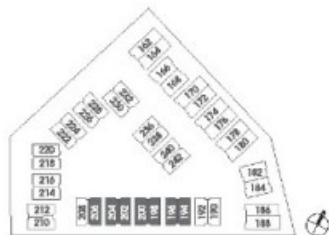
3RD STOREY



ROOF TERRACE

## Type A2

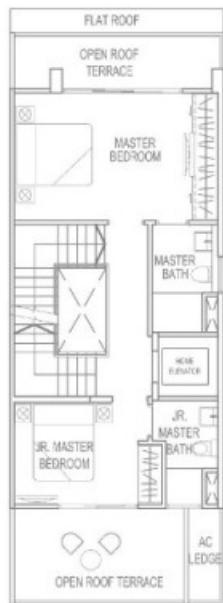
House No. : 194, 198, 202 & 206  
196, 200 & 204 (Mirror)  
Area : 325 sqm / 3,498 sqft



BASEMENT



1ST STOREY



2ND STOREY



3RD STOREY



ROOF TERRACE



## Type A2-1

House No. : 216, 224 & 228  
214, 222 & 226 (Mirror)  
Area : 339 sqm / 3,649 sqft



BASEMENT



1ST STOREY



2ND STOREY



3RD STOREY



ROOF TERRACE

# Type A2-2

House No. : 218

Area : 339 sqm / 3,649 sqft



BASEMENT



1ST STOREY



2ND STOREY



3RD STOREY

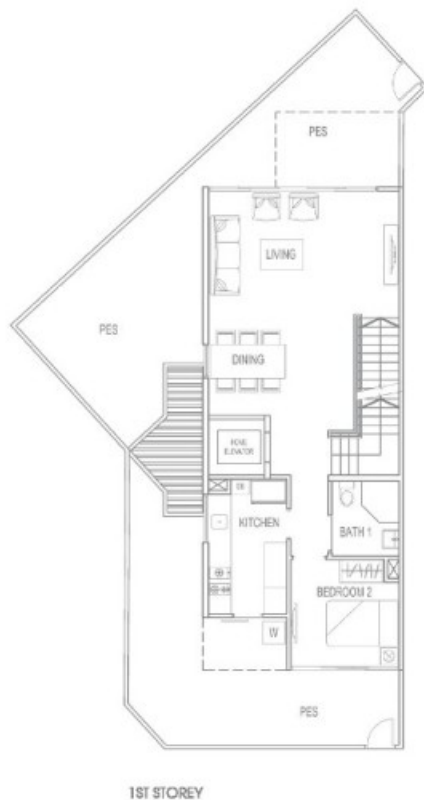
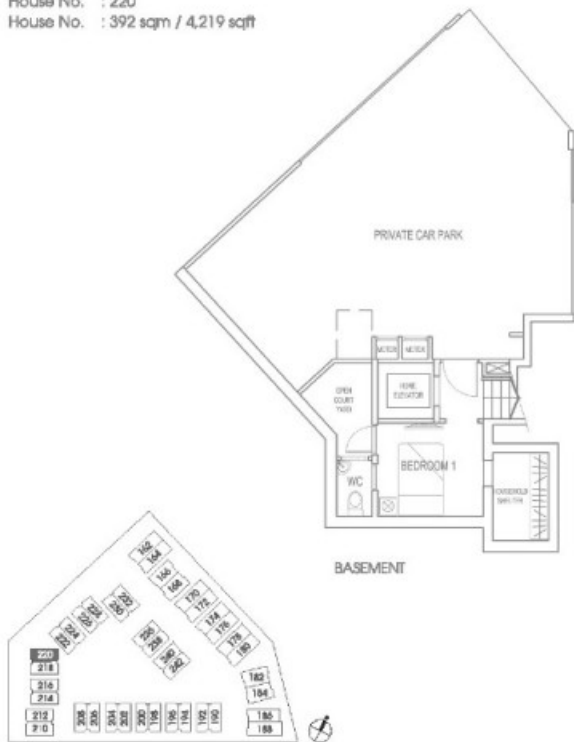


ROOF TERRACE

# Type A2-3

House No. : 220

House No. : 392 sqm / 4,219 sqft





2ND STOREY



3RD STOREY



ROOF TERRACE

# Type A2-4

House No. : 230

Area : 337 sqm / 3,627 sqft



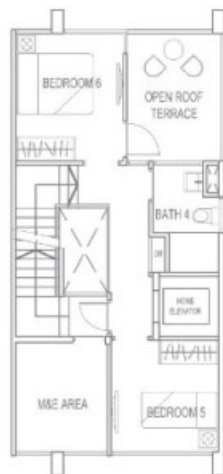
BASEMENT



1ST STOREY



2ND STOREY



3RD STOREY



ROOF TERRACE



# Type A2-5

House No. : 208

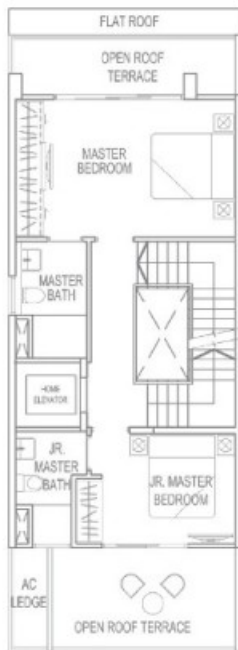
Area : 317 sqm / 3,412 sqft



BASEMENT



1ST STOREY



2ND STOREY



3RD STOREY



ROOF TERRACE

# Type A2-6

House No. : 232

Area : 313 sqm / 3,369 sqft



BASEMENT



1ST STOREY



2ND STOREY



3RD STOREY



ROOF TERRACE

# Type A2-7

House No. : 190

Area : 315 sqm / 3,391 sqft



BASEMENT



1ST STOREY



2ND STOREY



3RD STOREY



ROOF TERRACE

# Type A2-8

House No. : 192

Area : 317 sqm / 3,412 sqft



BASEMENT



1ST STOREY



2ND STOREY



3RD STOREY



ROOF TERRACE

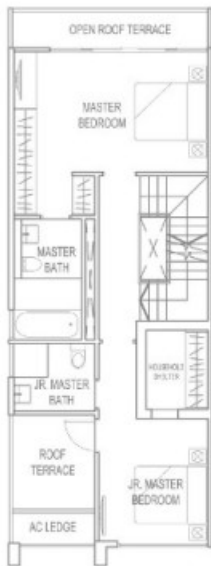


# Type B1

House No. : 174 & 178  
172 & 176 (Mirror)  
Area : 302 sqm / 3,251 sqft



1ST STOREY



2ND STOREY



3RD STOREY



ROOF TERRACE

# Type B1-1

House No. : 162  
Area : 301 sqm / 3,240 sqft

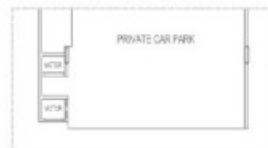


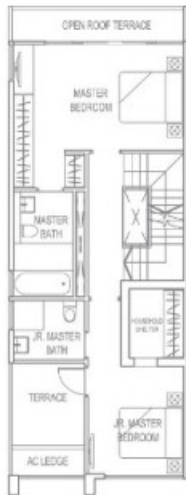
1ST STOREY

House No.: 164 (Mirror)  
Area: 302 sqm / 3,251 sqft



House No.: 170  
Area: 302 sqm / 3,251 sqft





2ND STOREY



3RD STOREY



ROOF TERRACE

# Type B1-2

House No. : 180

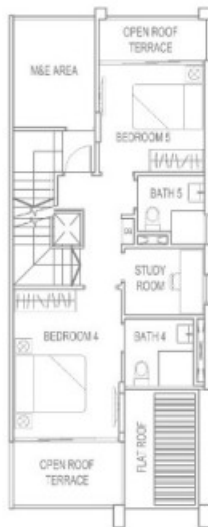
Area : 293 sqm / 3,154 sqft



1ST STOREY



2ND STOREY



3RD STOREY



ROOF TERRACE

# Type B1-3

House No. : 188

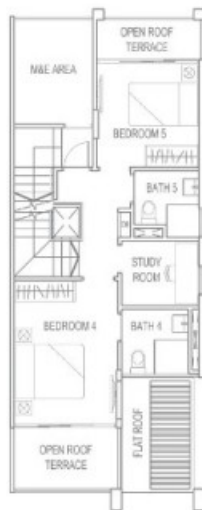
Area : 320 sqm / 3,445 sqft



1ST STOREY



2ND STOREY



3RD STOREY



ROOF TERRACE



# Type B2

House No. : 166

Area : 297 sqm / 3,197 sqft



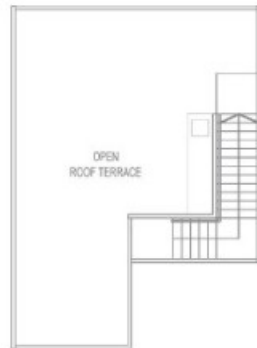
1ST STOREY



2ND STOREY



3RD STOREY



ROOF TERRACE

# Type B2-1

House No. : 168

Area : 294 sqm / 3,165 sqft



1ST STOREY



2ND STOREY



3RD STOREY



ROOF TERRACE

# Type B2-2

House No. : 182

Area : 307 sqm / 3,305 sqft





2ND STOREY



3RD STOREY



ROOF TERRACE

# Type B2-3

House No. : 184

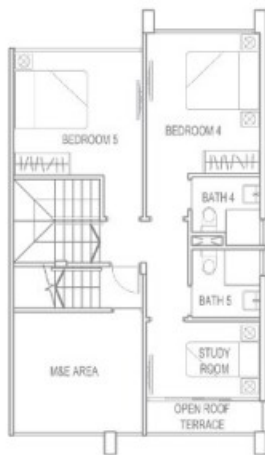
Area : 312 sqm / 3,358 sqft



1ST STOREY



2ND STOREY



3RD STOREY



ROOF TERRACE



# Type B3

House No. : 186

Area : 343 sqm / 3,692 sqft



1ST STOREY





2ND STOREY



3RD STOREY



ROOF TERRACE