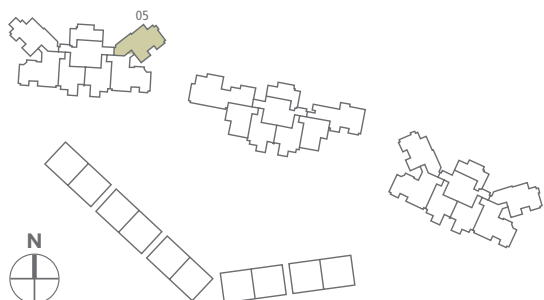
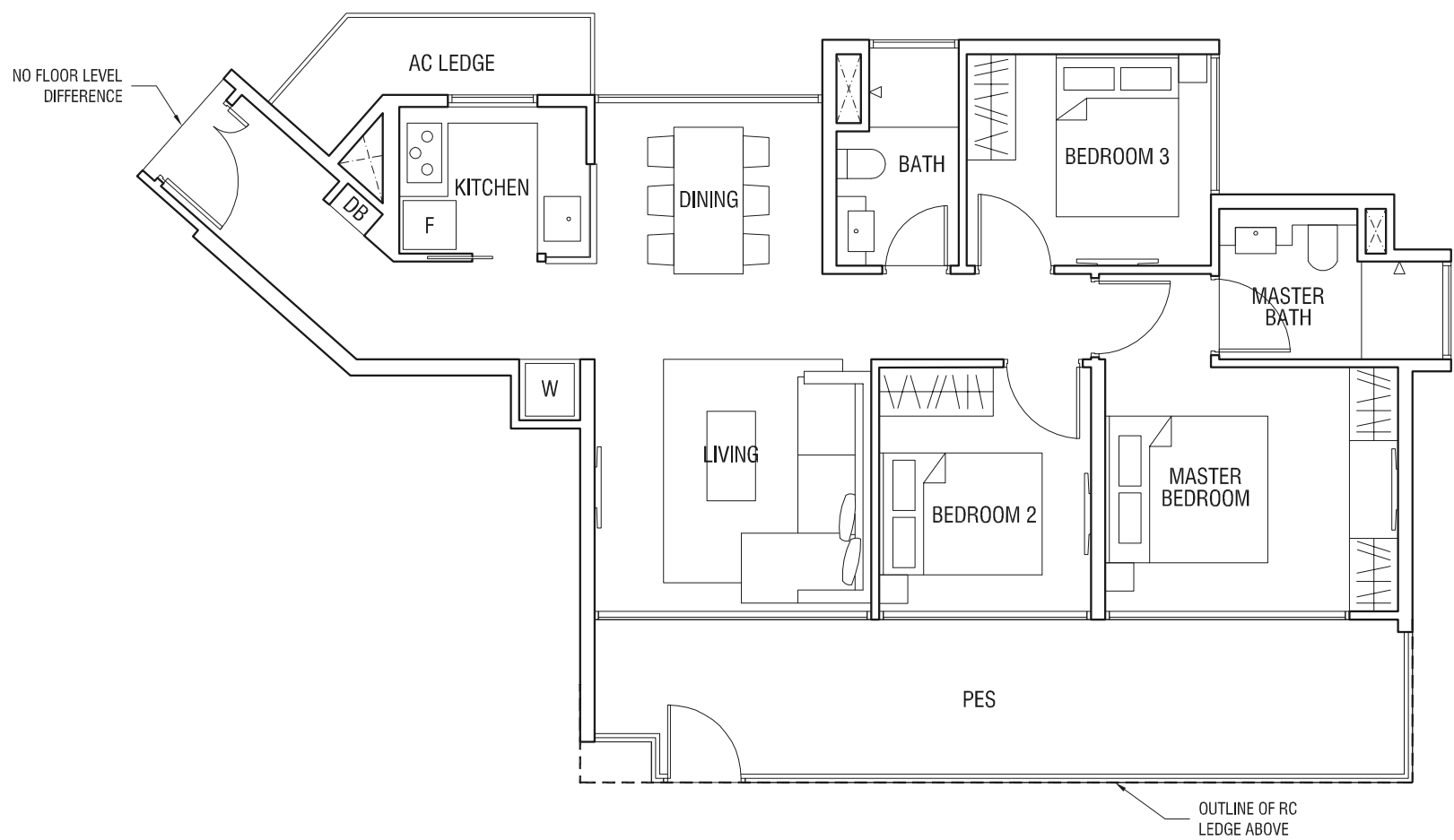


TYPE C1G

3-BEDROOM

102 sqm (1,098 sqft)

Unit #01-05



T H O M S O N
T H R E E

The plans are subject to change as may be required or approved by the relevant authorities.
Areas are estimates only and are subject to final survey. Plans are not drawn to scale.

TYPE C1a

3-BEDROOM

97 sqm (1,044 sqft)

Unit #05-05 to #06-05, #09-05 to #10-05

Unit #13-05 to #14-05, #17-05 to #18-05

Unit #05-17 to #06-17, #09-17 to #10-17

Unit #13-17 to #14-17, #17-17 to #18-17

(Mirrored)

Unit #05-15 to #06-15, #09-15 to #10-15

Unit #13-15 to #14-15, #17-15 to #18-15



TYPE C1b

3-BEDROOM

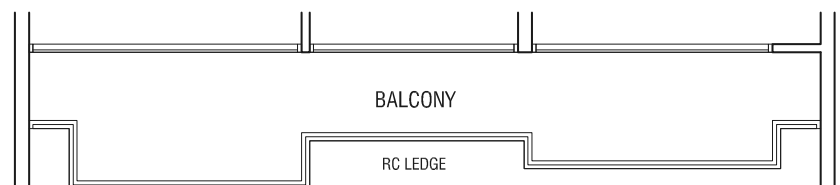
97 sqm (1,044 sqft)

Unit #04-05, #08-05, #12-05, #16-05, #20-05

Unit #04-17, #08-17, #12-17, #16-17, #20-17

(Mirrored)

Unit #04-15, #08-15, #12-15, #16-15, #20-15



TYPE C1c

3-BEDROOM

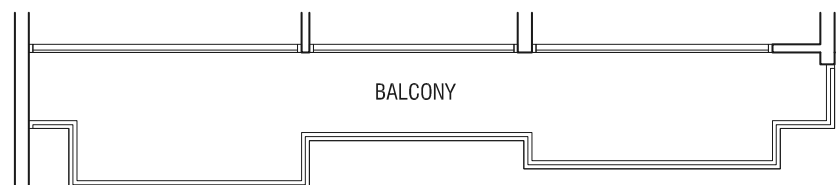
97 sqm (1,044 sqft)

Unit #02-05 to #03-05

Unit #03-17

(Mirrored)

Unit #03-15



TYPE C1d

3-BEDROOM

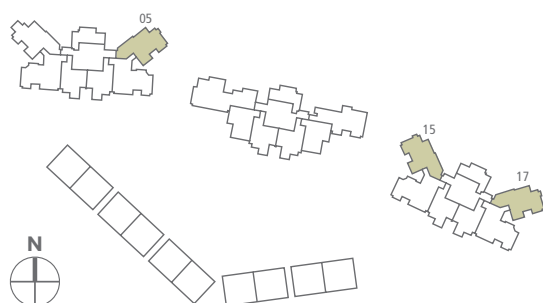
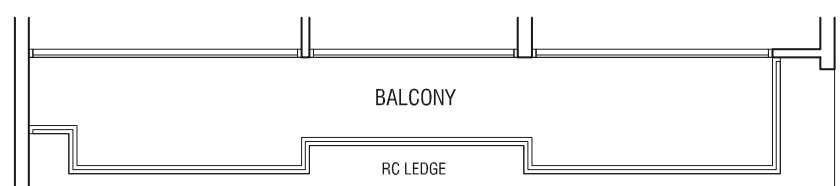
96 sqm (1,033 sqft)

Unit #07-05, #11-05, #15-05, #19-05

Unit #07-17, #11-17, #15-17, #19-17

(Mirrored)

Unit #07-15, #11-15, #15-15, #19-15



T H O M S O N
THREE

The plans are subject to change as may be required or approved by the relevant authorities.
Areas are estimates only and are subject to final survey. Plans are not drawn to scale.

TYPE C1P

3-BEDROOM

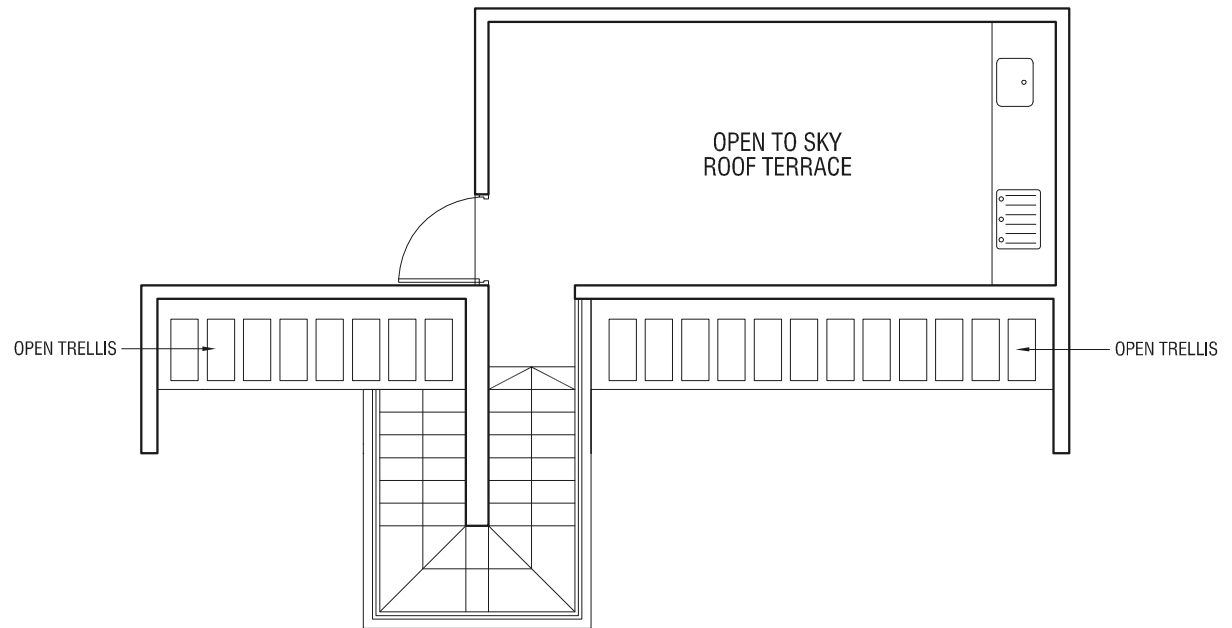
131 sqm (1,410 sqft)

Unit #21-05

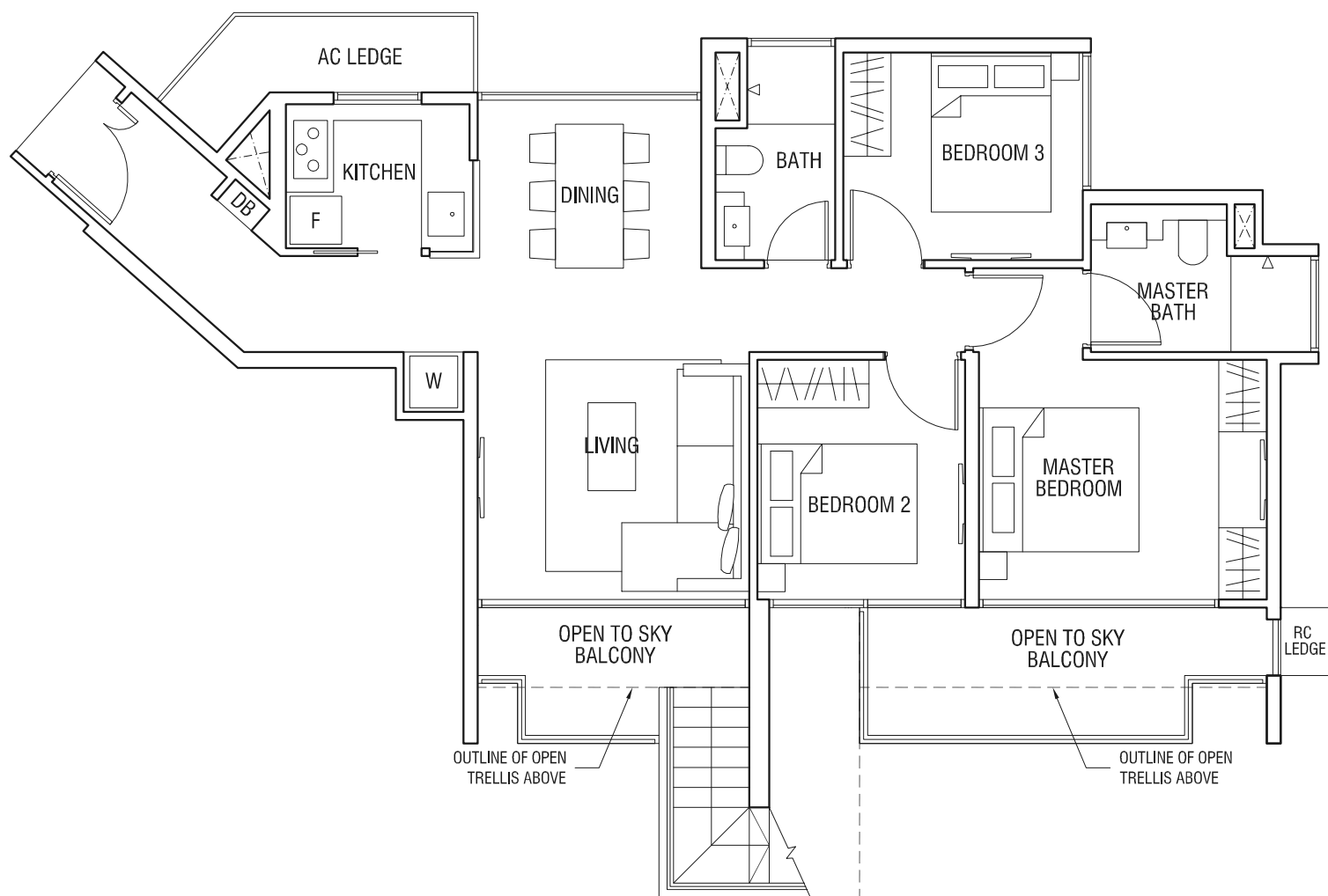
Unit #21-17

(Mirrored)

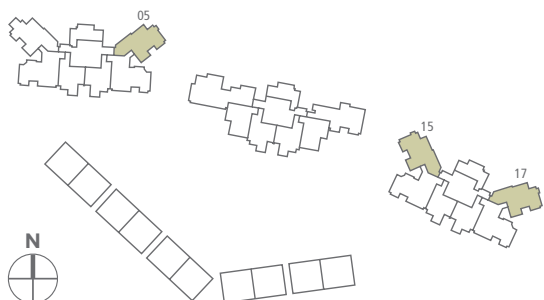
Unit #21-15



Upper Storey



Lower Storey



T H O M S O N
THREE

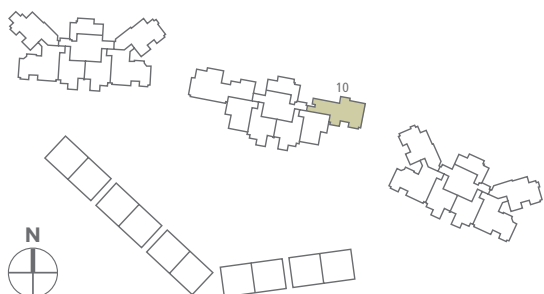
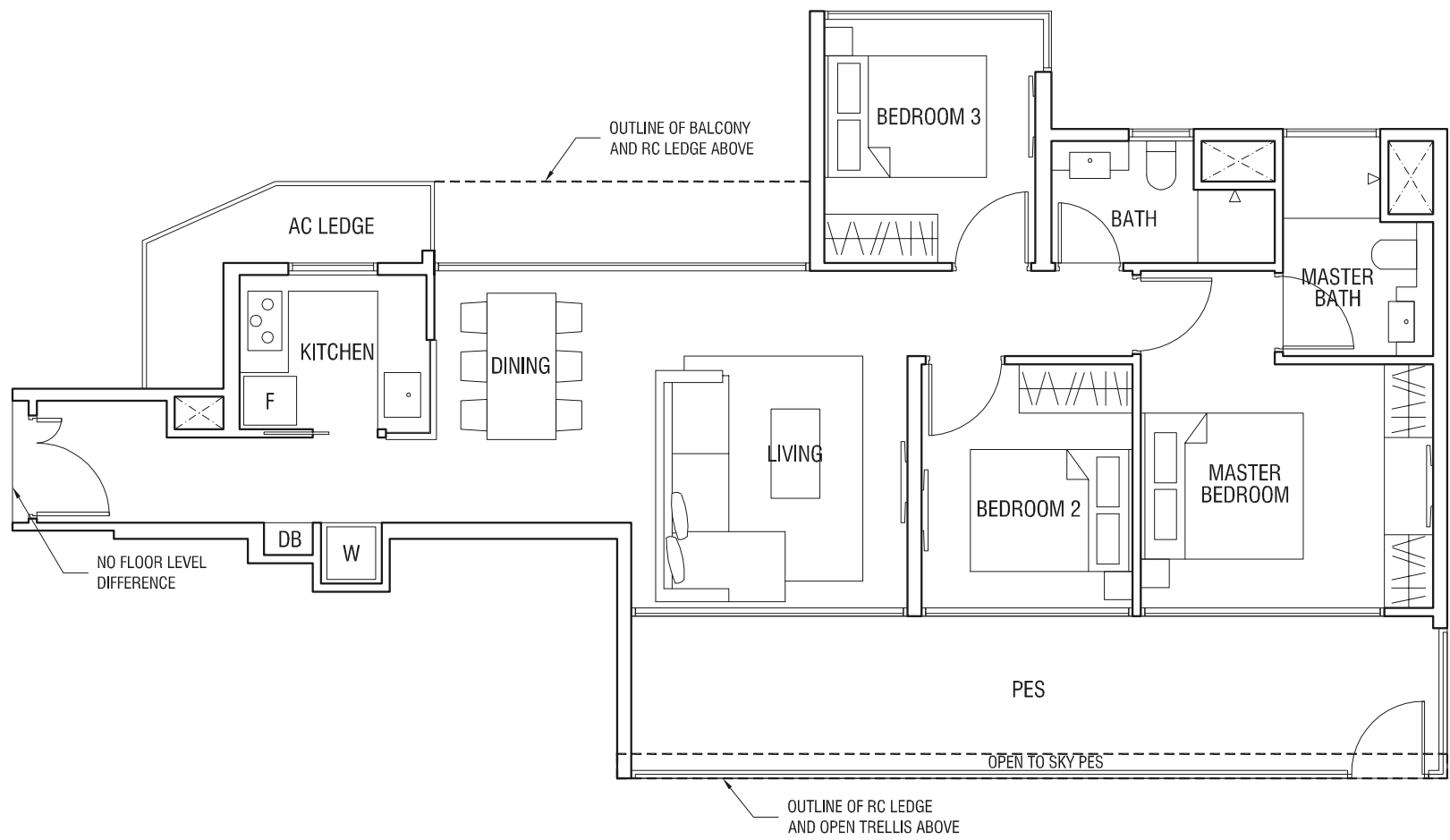
The plans are subject to change as may be required or approved by the relevant authorities.
Areas are estimates only and are subject to final survey. Plans are not drawn to scale.

TYPE C2G

3-BEDROOM

104 sqm (1,119 sqft)

Unit #01-10



T H O M S O N
T H R E E

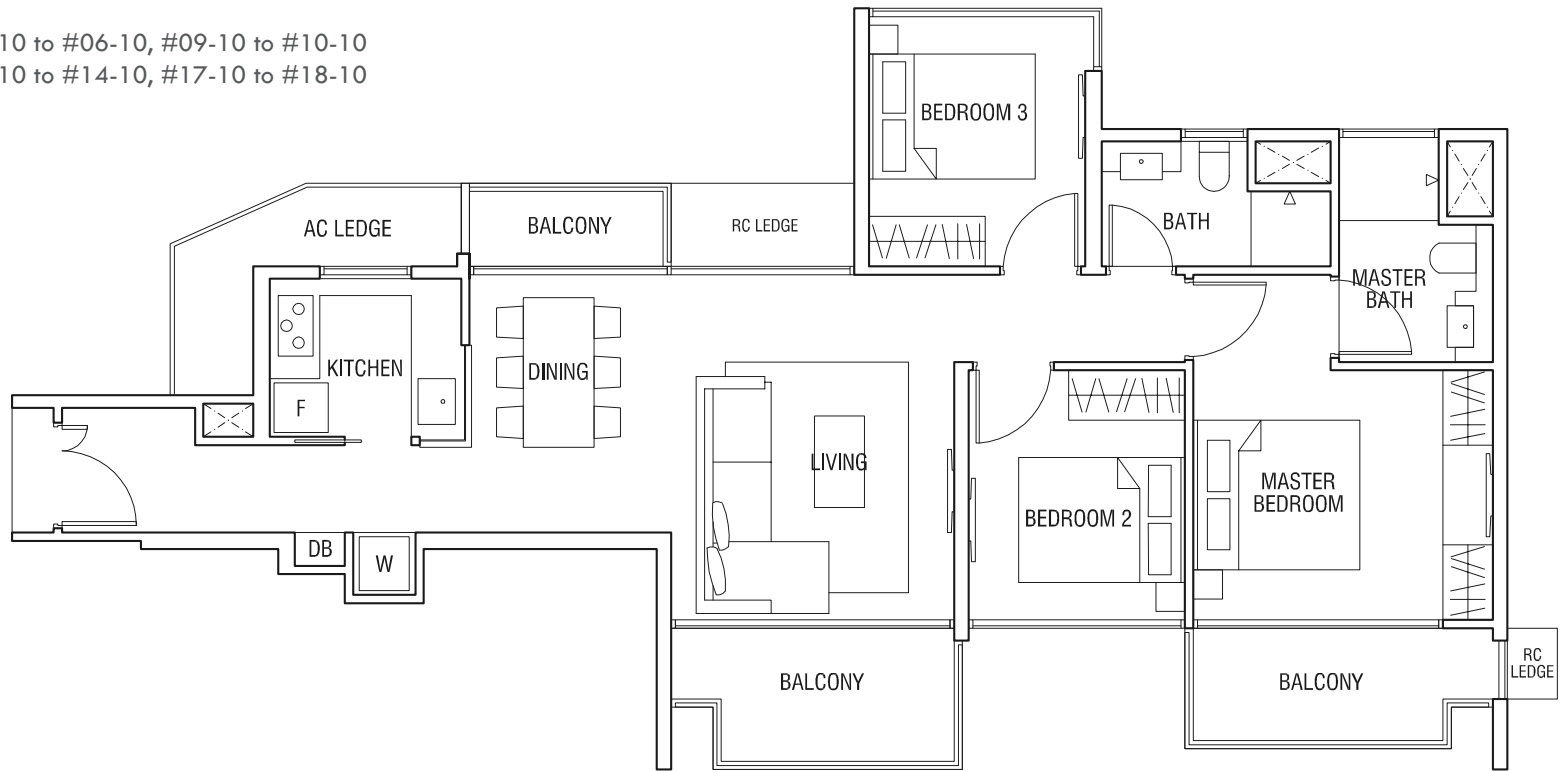
The plans are subject to change as may be required or approved by the relevant authorities.
Areas are estimates only and are subject to final survey. Plans are not drawn to scale.

TYPE C2a

3-BEDROOM

98 sqm (1,055 sqft)

Unit #05-10 to #06-10, #09-10 to #10-10
Unit #13-10 to #14-10, #17-10 to #18-10

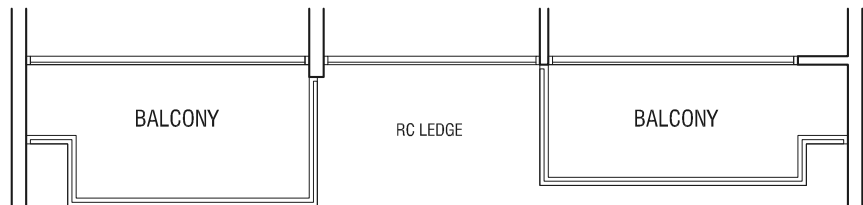


TYPE C2b

3-BEDROOM

98 sqm (1,055 sqft)

Unit #04-10, #08-10, #12-10
Unit #16-10, #20-10

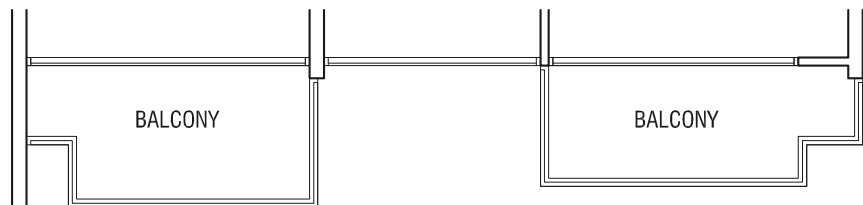


TYPE C2c

3-BEDROOM

98 sqm (1,055 sqft)

Unit #02-10 to #03-10

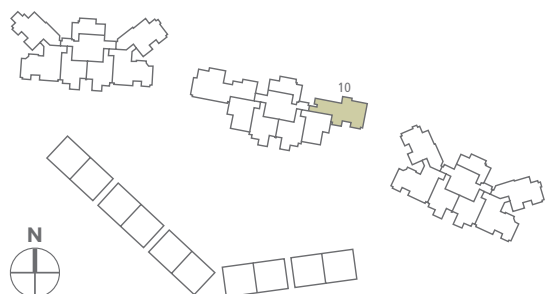
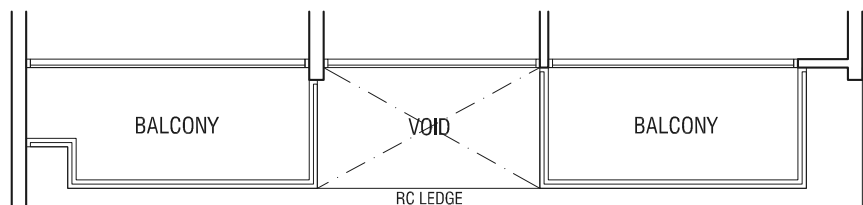


TYPE C2d

3-BEDROOM

96 sqm (1,033 sqft)

Unit #07-10, #11-10, #15-10, #19-10



T H O M S O N
THREE

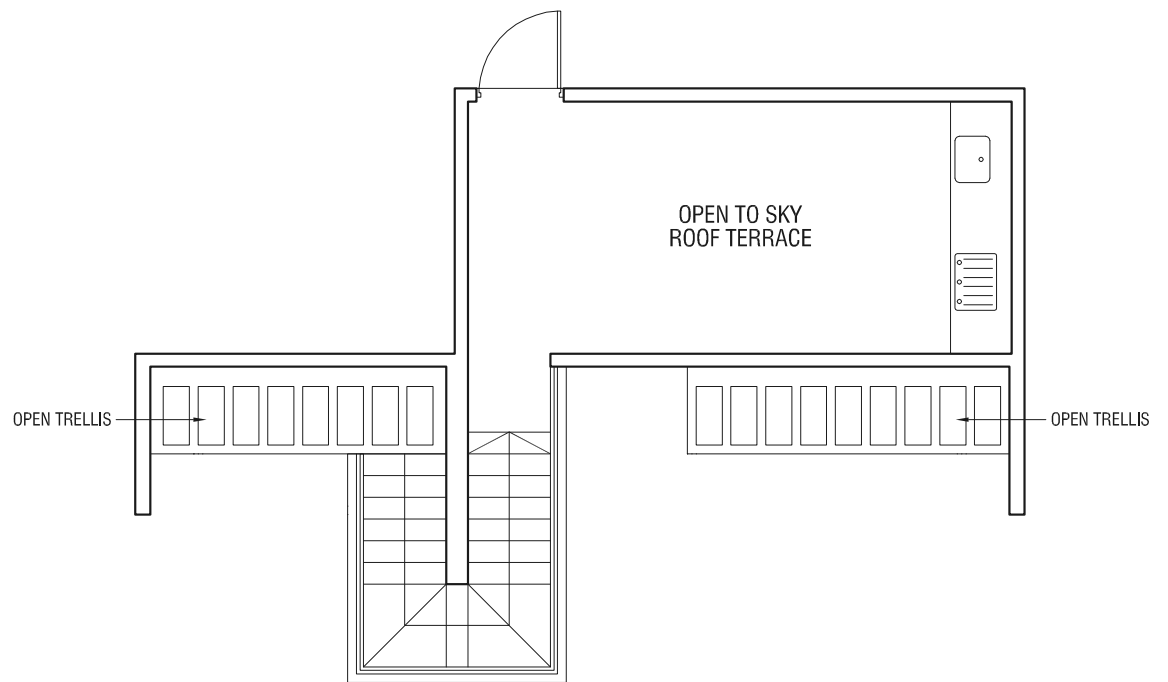
The plans are subject to change as may be required or approved by the relevant authorities.
Areas are estimates only and are subject to final survey. Plans are not drawn to scale.

TYPE C2P

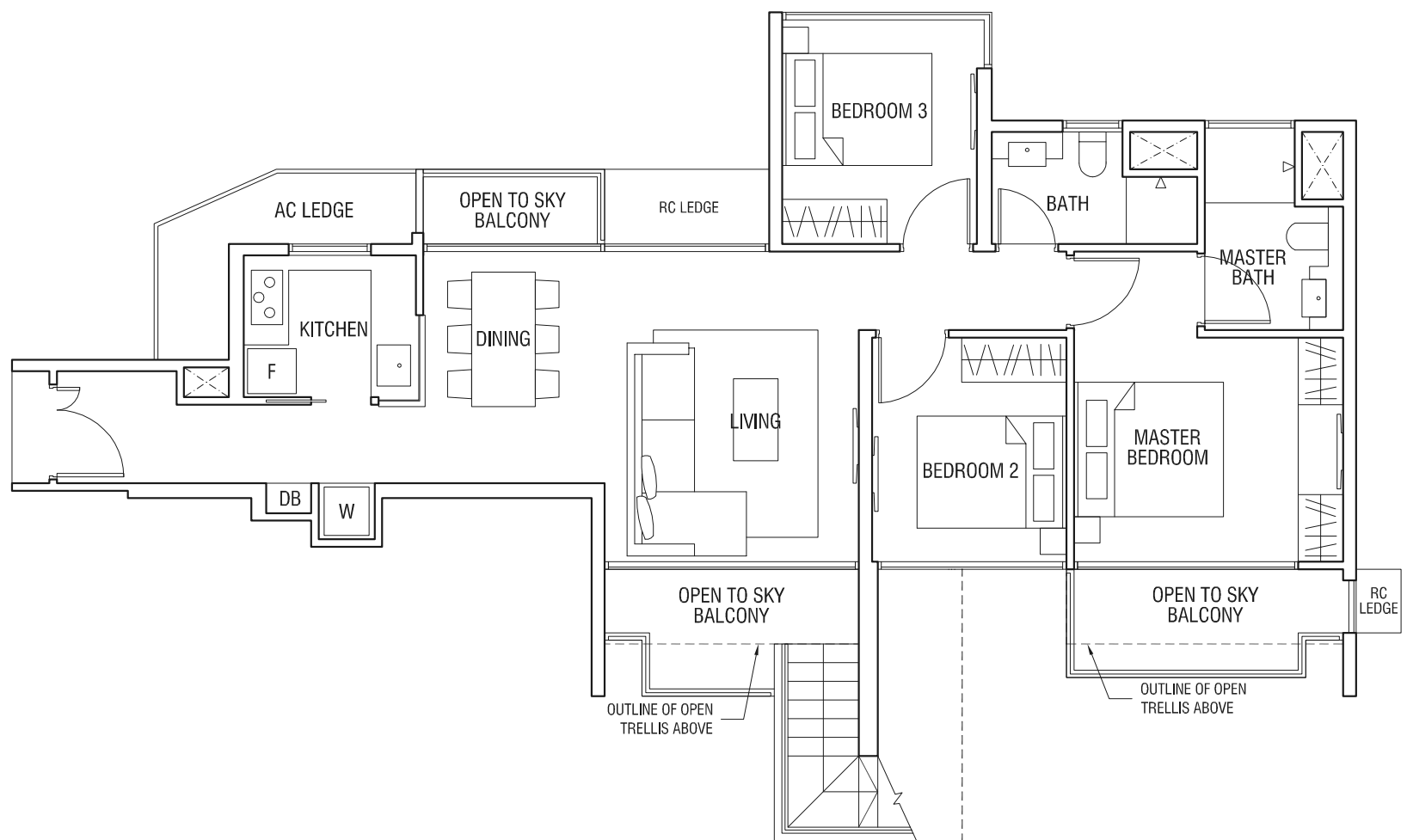
3-BEDROOM

131 sqm (1,410 sqft)

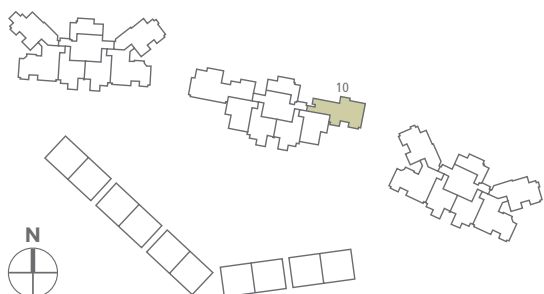
Unit #21-10



Upper Storey



Lower Storey



T H O M S O N
T H R E E

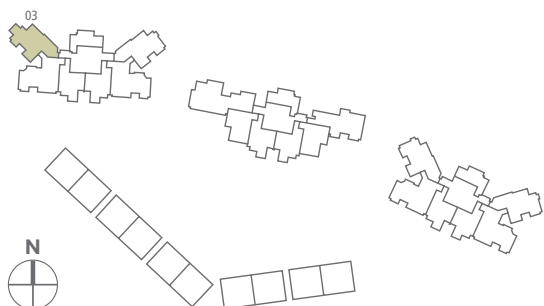
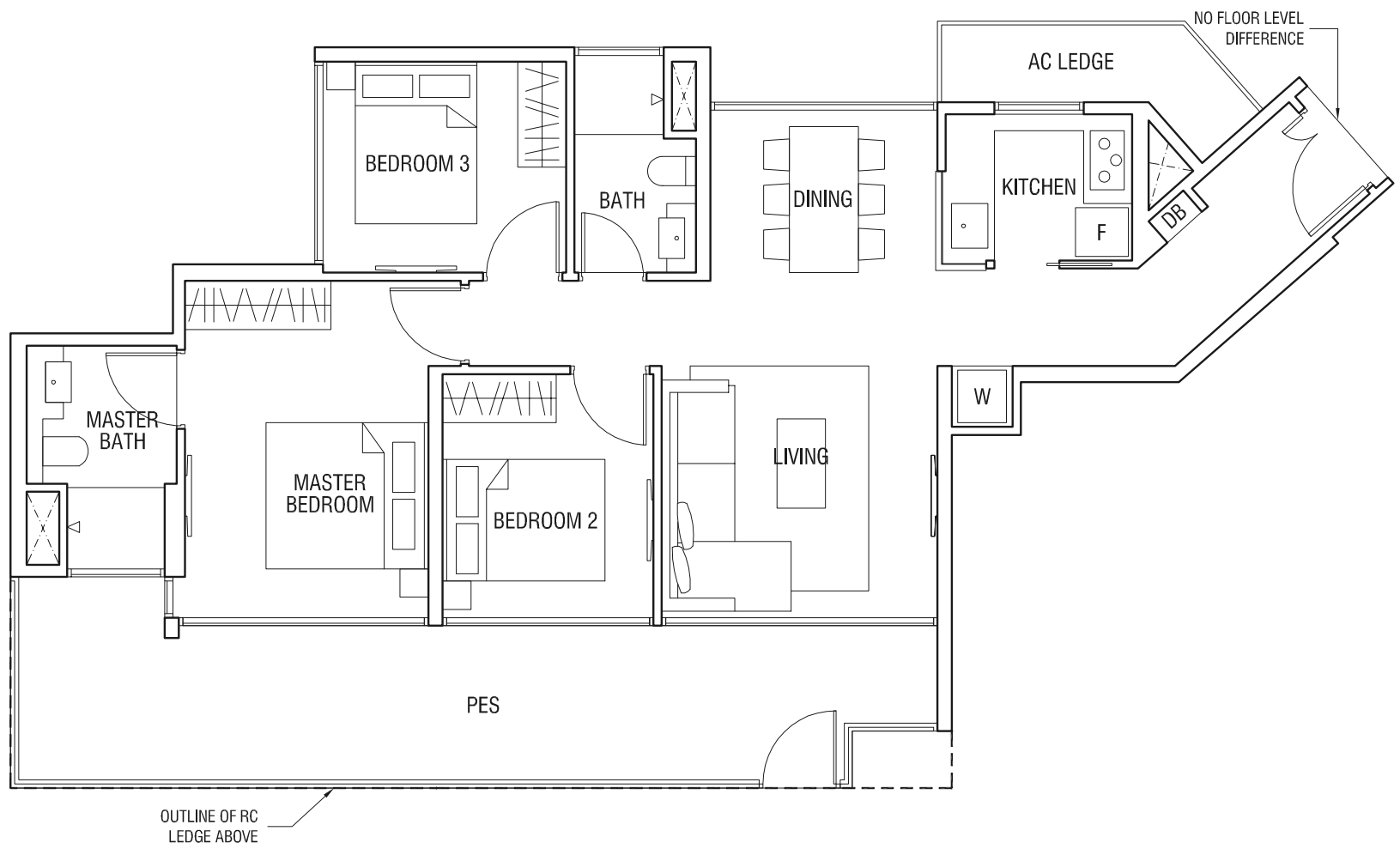
The plans are subject to change as may be required or approved by the relevant authorities.
Areas are estimates only and are subject to final survey. Plans are not drawn to scale.

TYPE C3G

3-BEDROOM

106 sqm (1,141 sqft)

Unit #01-03



T H O M S O N
T H R E E

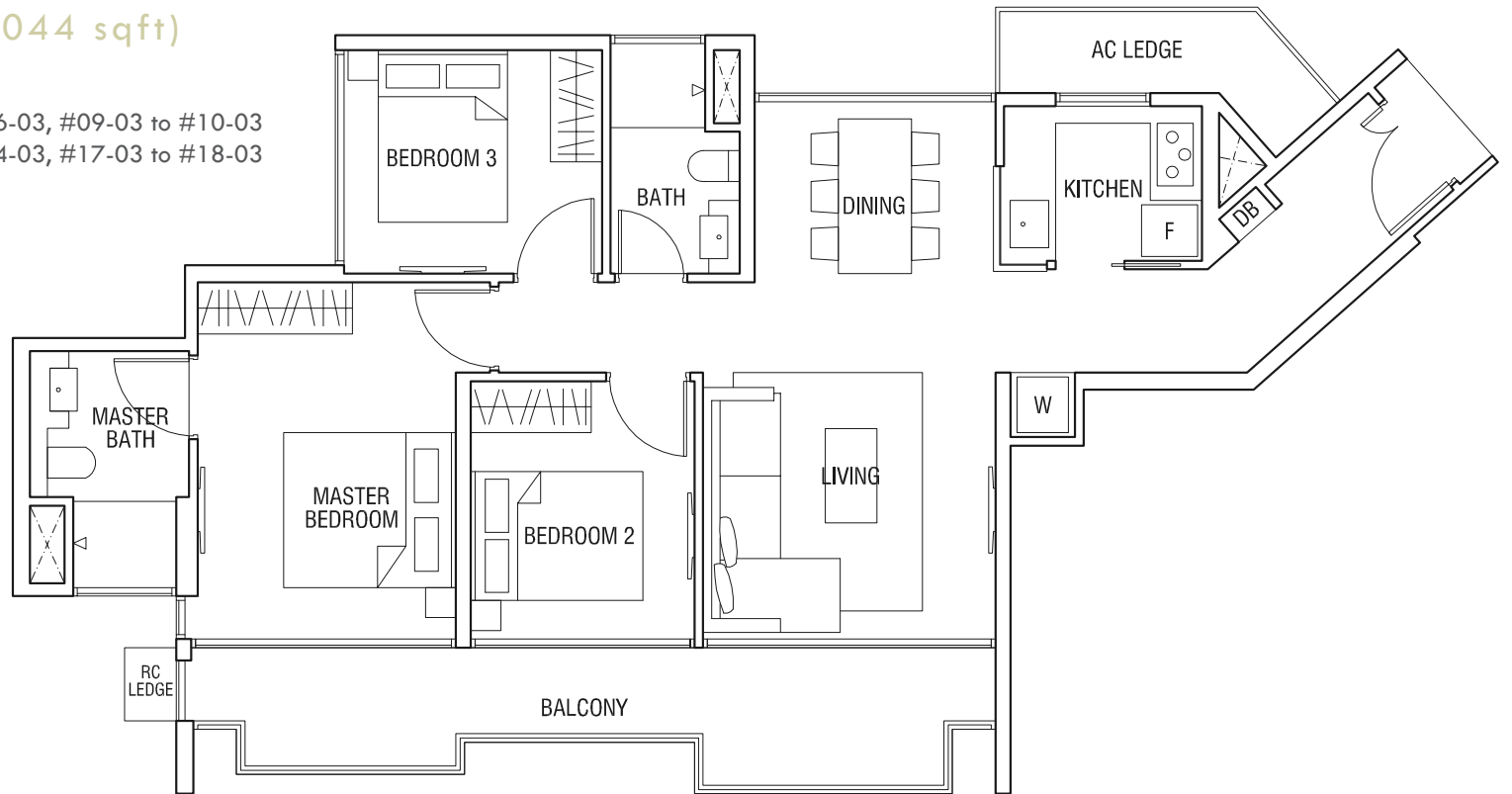
The plans are subject to change as may be required or approved by the relevant authorities.
Areas are estimates only and are subject to final survey. Plans are not drawn to scale.

TYPE C3a

3-BEDROOM

97 sqm (1,044 sqft)

Unit #05-03 to #06-03, #09-03 to #10-03
Unit #13-03 to #14-03, #17-03 to #18-03

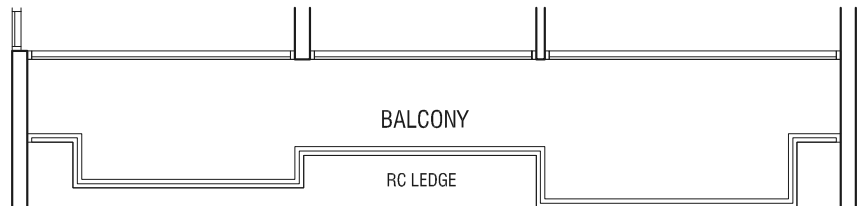


TYPE C3b

3-BEDROOM

97 sqm (1,044 sqft)

Unit #04-03, #08-03, #12-03, #16-03, #20-03

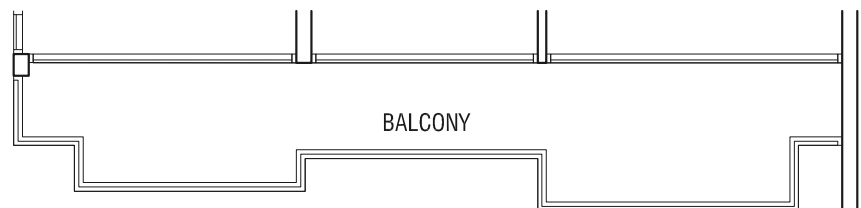


TYPE C3c

3-BEDROOM

97 sqm (1,044 sqft)

Unit #02-03 to #03-03

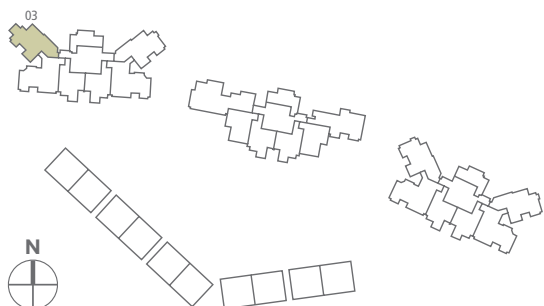
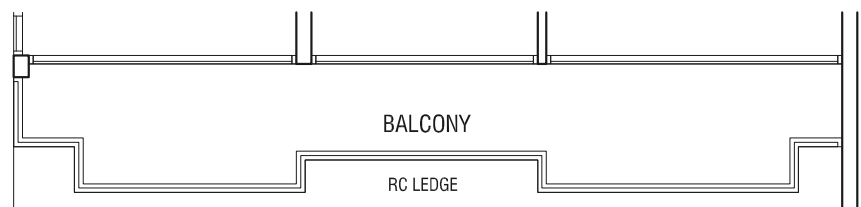


TYPE C3d

3-BEDROOM

96 sqm (1,033 sqft)

Unit #07-03, #11-03, #15-03, #19-03



T H O M S O N
T H R E E

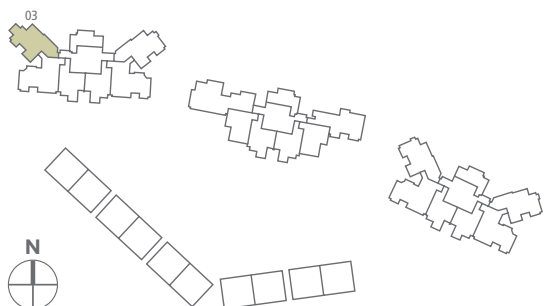
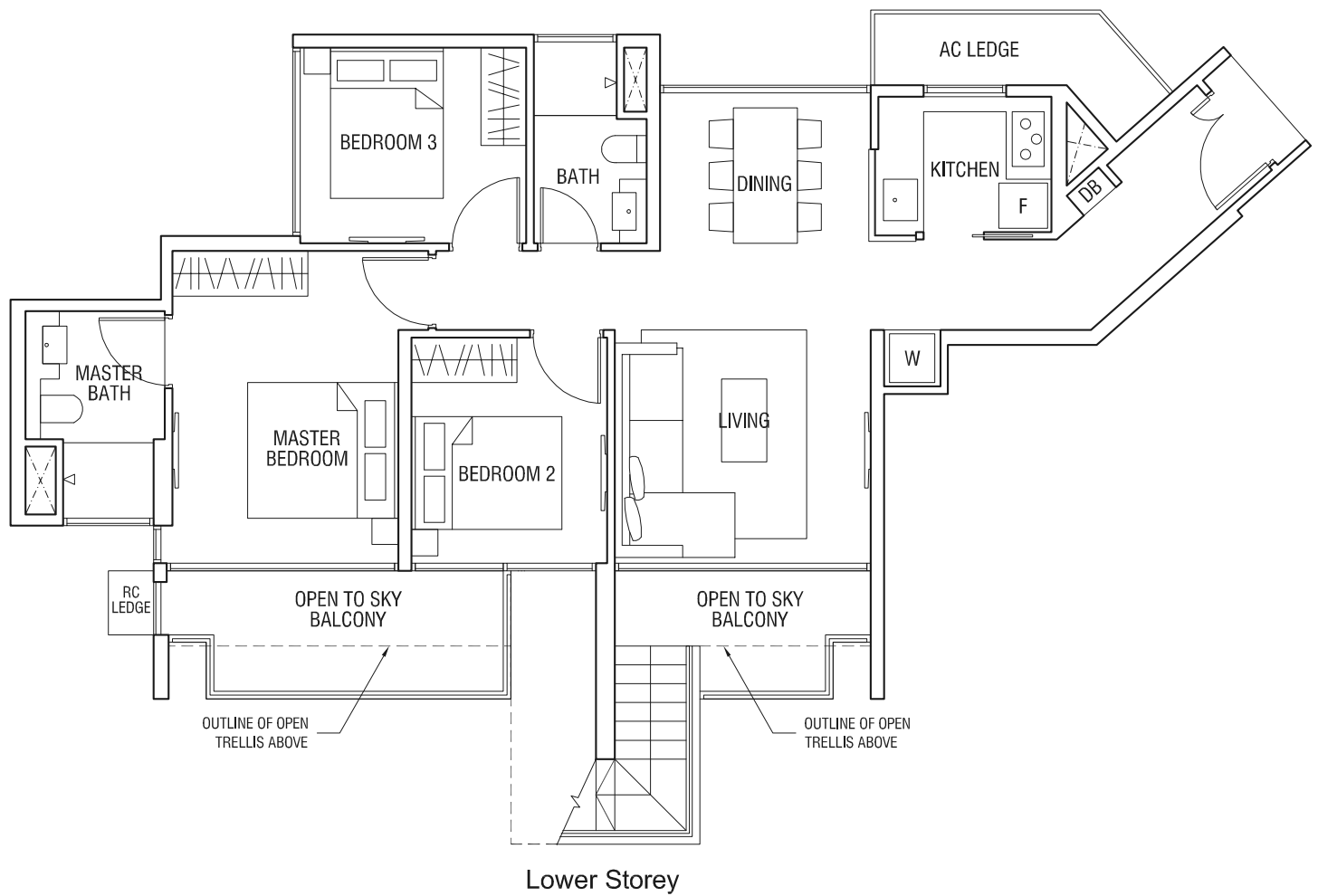
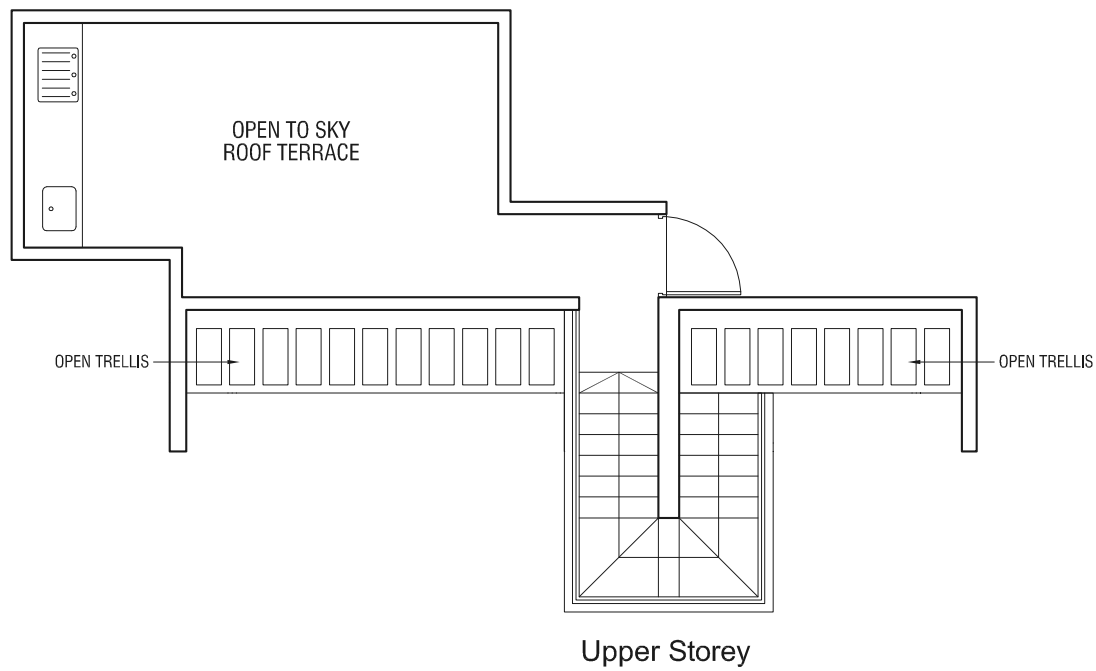
The plans are subject to change as may be required or approved by the relevant authorities.
Areas are estimates only and are subject to final survey. Plans are not drawn to scale.

TYPE C3P

3-BEDROOM

132 sqm (1,421 sqft)

Unit #21-03



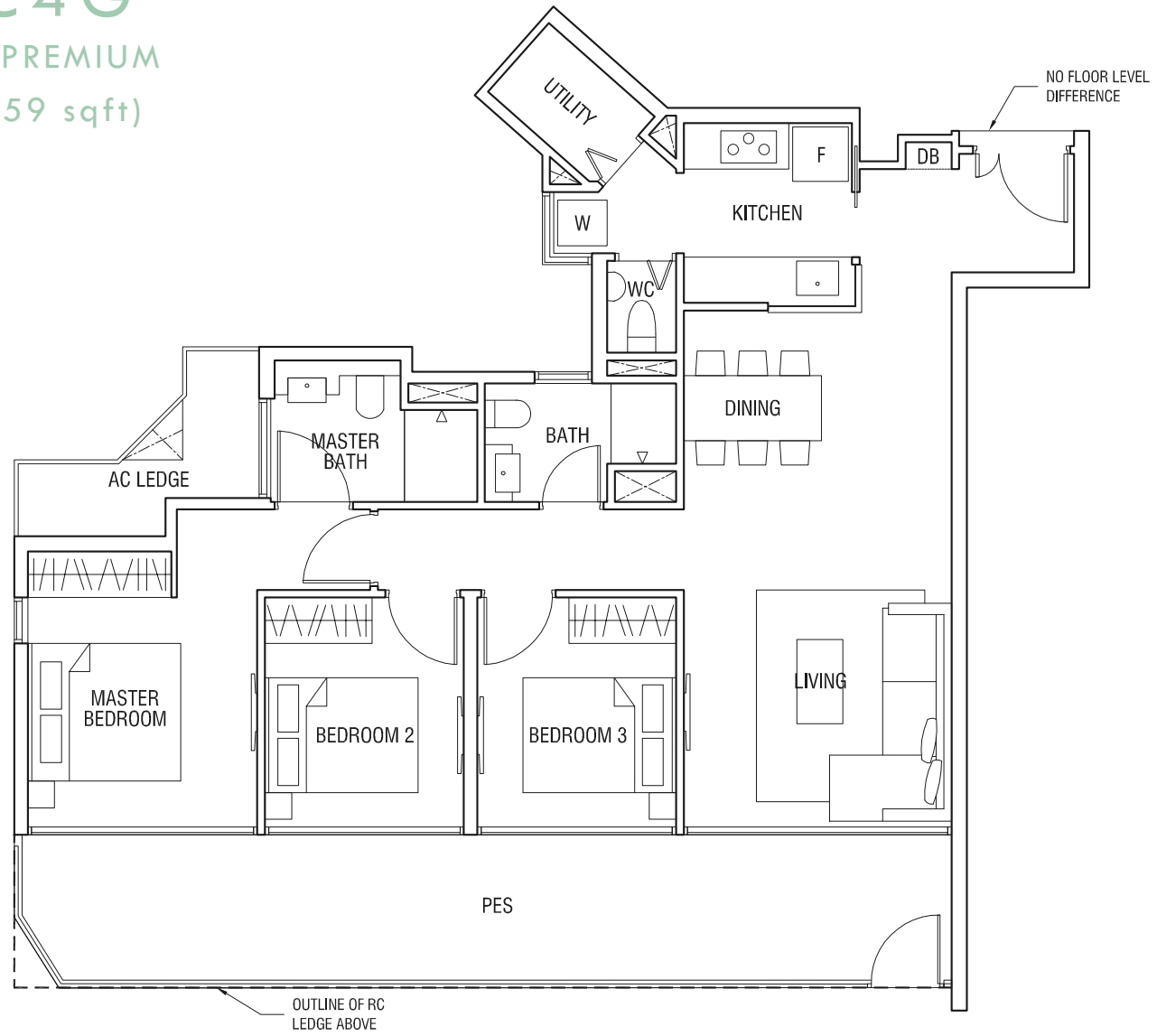
T H O M S O N
T H R E E

The plans are subject to change as may be required or approved by the relevant authorities.
Areas are estimates only and are subject to final survey. Plans are not drawn to scale.

TYPE C4G

3-BEDROOM PREMIUM
117 sqm (1,259 sqft)

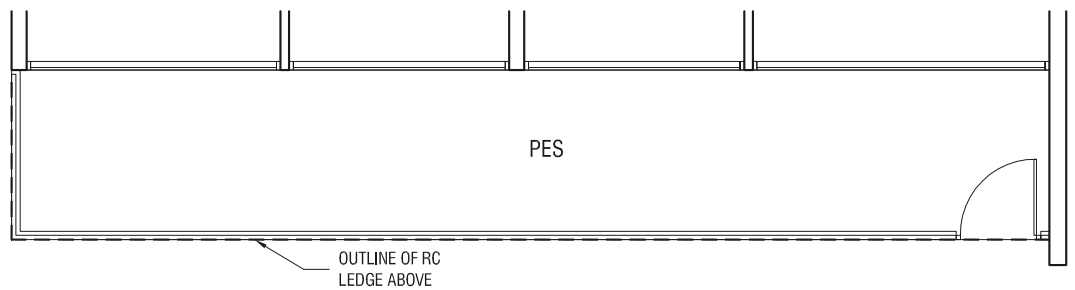
Unit #01-02



TYPE C4G_a

3-BEDROOM PREMIUM
117 sqm (1,259 sqft)

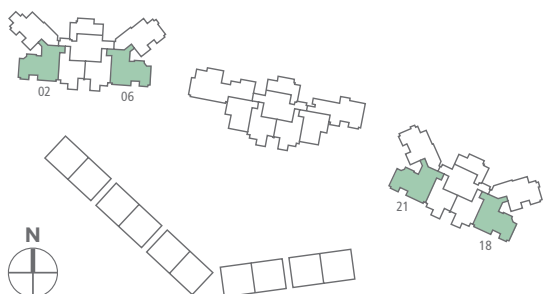
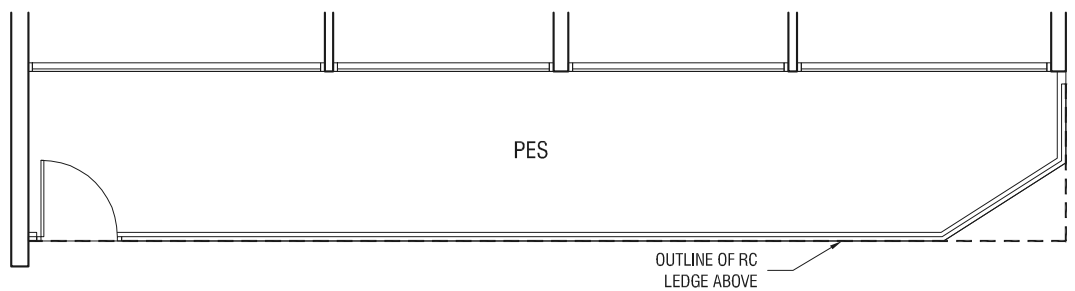
Unit #01-21
(Mirrored)
Unit #01-06



TYPE C4G_b

3-BEDROOM PREMIUM
116 sqm (1,249 sqft)

(Mirrored)
Unit #01-18



T H O M S O N
T H R E E

The plans are subject to change as may be required or approved by the relevant authorities.
Areas are estimates only and are subject to final survey. Plans are not drawn to scale.

TYPE C4a

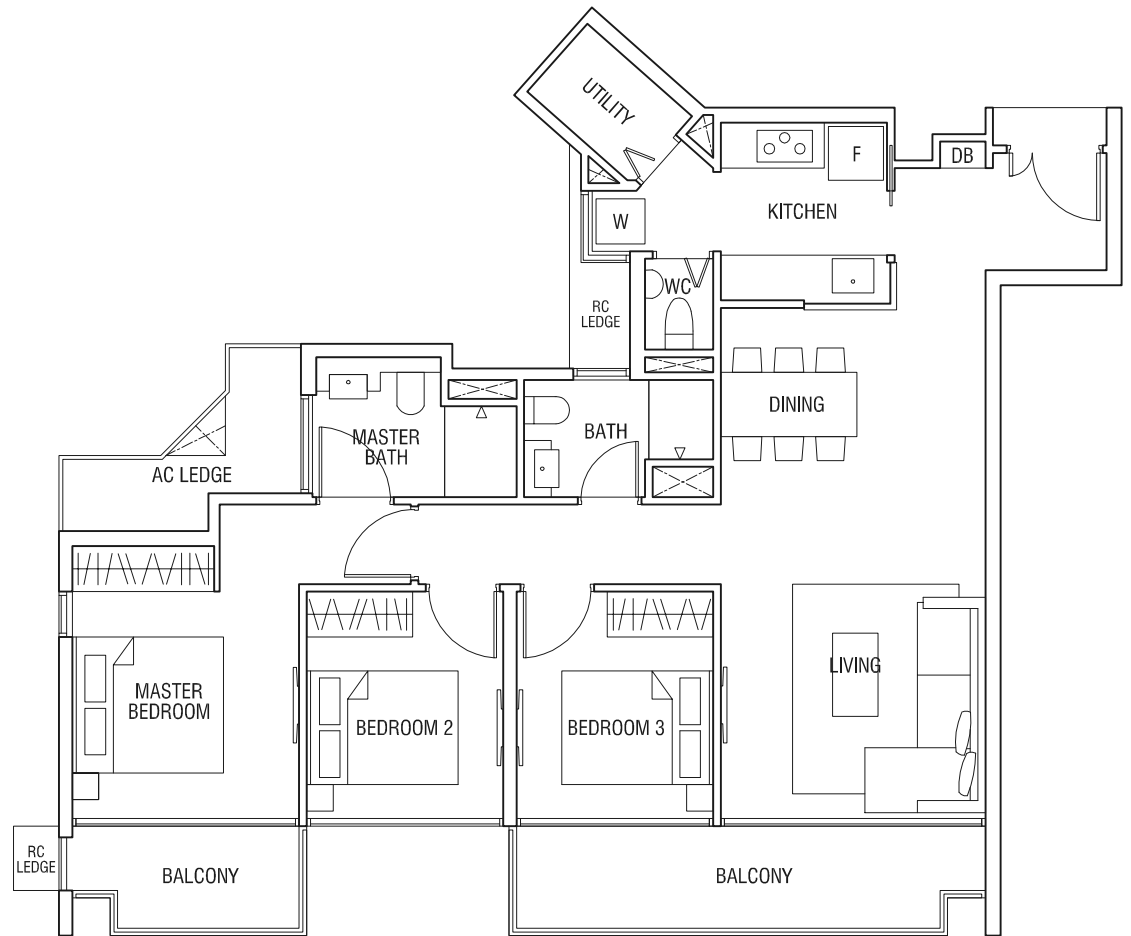
3-BEDROOM PREMIUM

106 sqm (1,141 sqft)

Unit #05-02 to #06-02, #09-02 to #10-02
 Unit #13-02 to #14-02, #17-02 to #18-02
 Unit #05-21 to #06-21, #09-21 to #10-21
 Unit #13-21 to #14-21, #17-21 to #18-21

(Mirrored)

Unit #05-06 to #06-06, #09-06 to #10-06
 Unit #13-06 to #14-06, #17-06 to #18-06
 Unit #05-18 to #06-18, #09-18 to #10-18
 Unit #13-18 to #14-18, #17-18 to #18-18



TYPE C4b

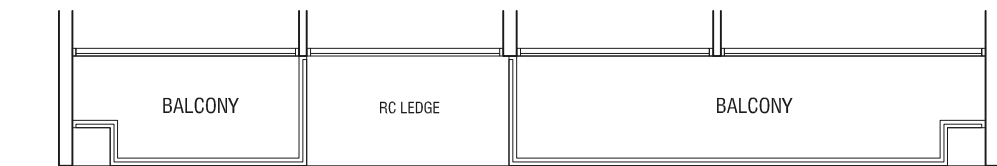
3-BEDROOM PREMIUM

106 sqm (1,141 sqft)

Unit #04-02, #08-02, #12-02, #16-02, #20-02
 Unit #04-21, #08-21, #12-21, #16-21, #20-21

(Mirrored)

Unit #04-06, #08-06, #12-06, #16-06, #20-06
 Unit #04-18, #08-18, #12-18, #16-18, #20-18



TYPE C4c

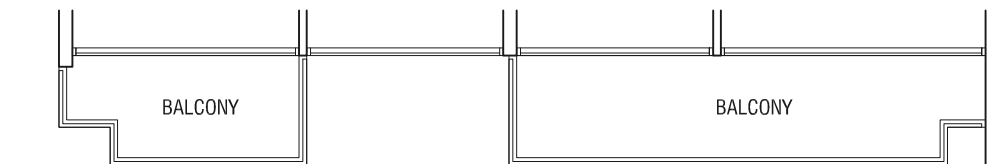
3-BEDROOM PREMIUM

106 sqm (1,141 sqft)

Unit #02-02 to #03-02
 Unit #02-21 to #03-21

(Mirrored)

Unit #02-06 to #03-06
 Unit #02-18 to #03-18



TYPE C4d

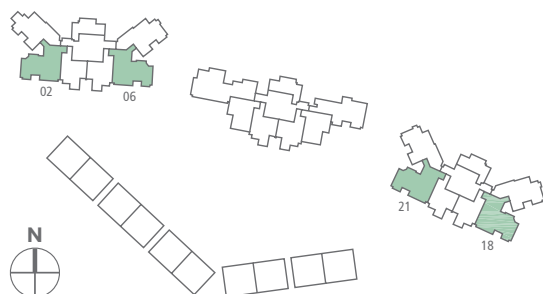
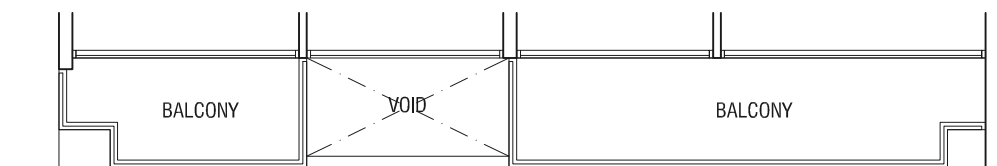
3-BEDROOM PREMIUM

106 sqm (1,141 sqft)

Unit #07-02, #11-02, #15-02, #19-02
 Unit #07-21, #11-21, #15-21, #19-21

(Mirrored)

Unit #07-06, #11-06, #15-06, #19-06
 Unit #07-18, #11-18, #15-18, #19-18



T H O M S O N
 T H R E E

The plans are subject to change as may be required or approved by the relevant authorities.
 Areas are estimates only and are subject to final survey. Plans are not drawn to scale.

TYPE C4P

3-BEDROOM PREMIUM

147 sqm (1,582 sqft)

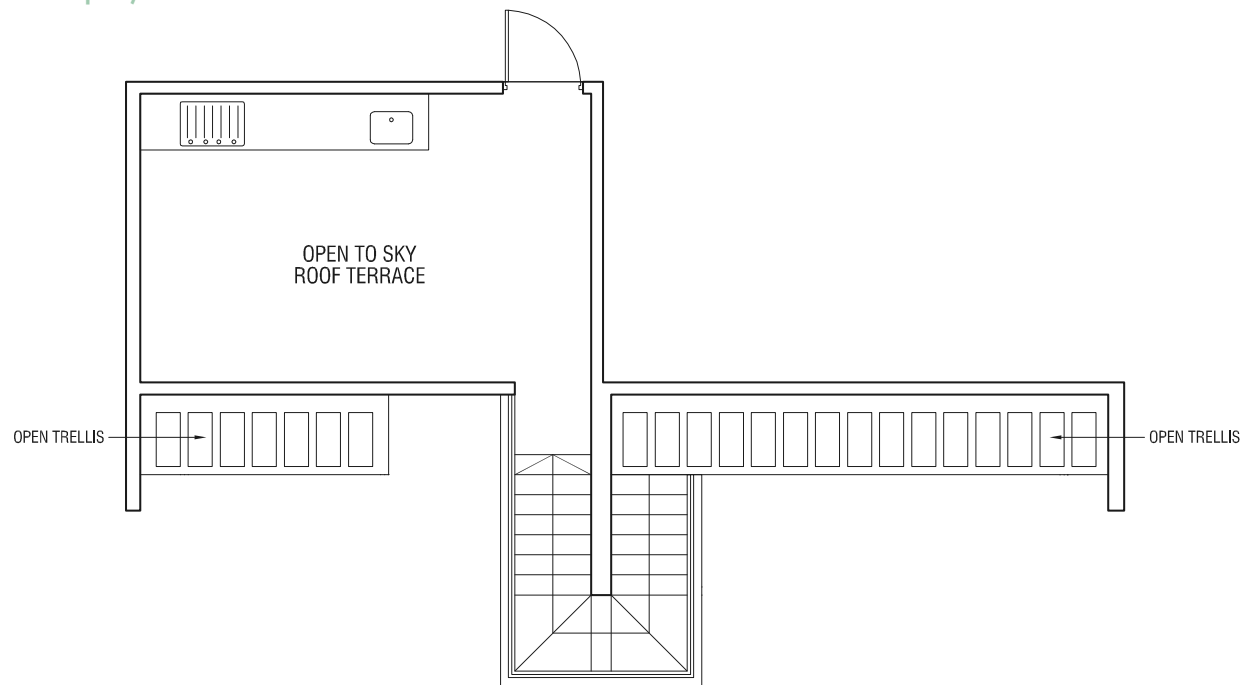
Unit #21-02

Unit #21-21

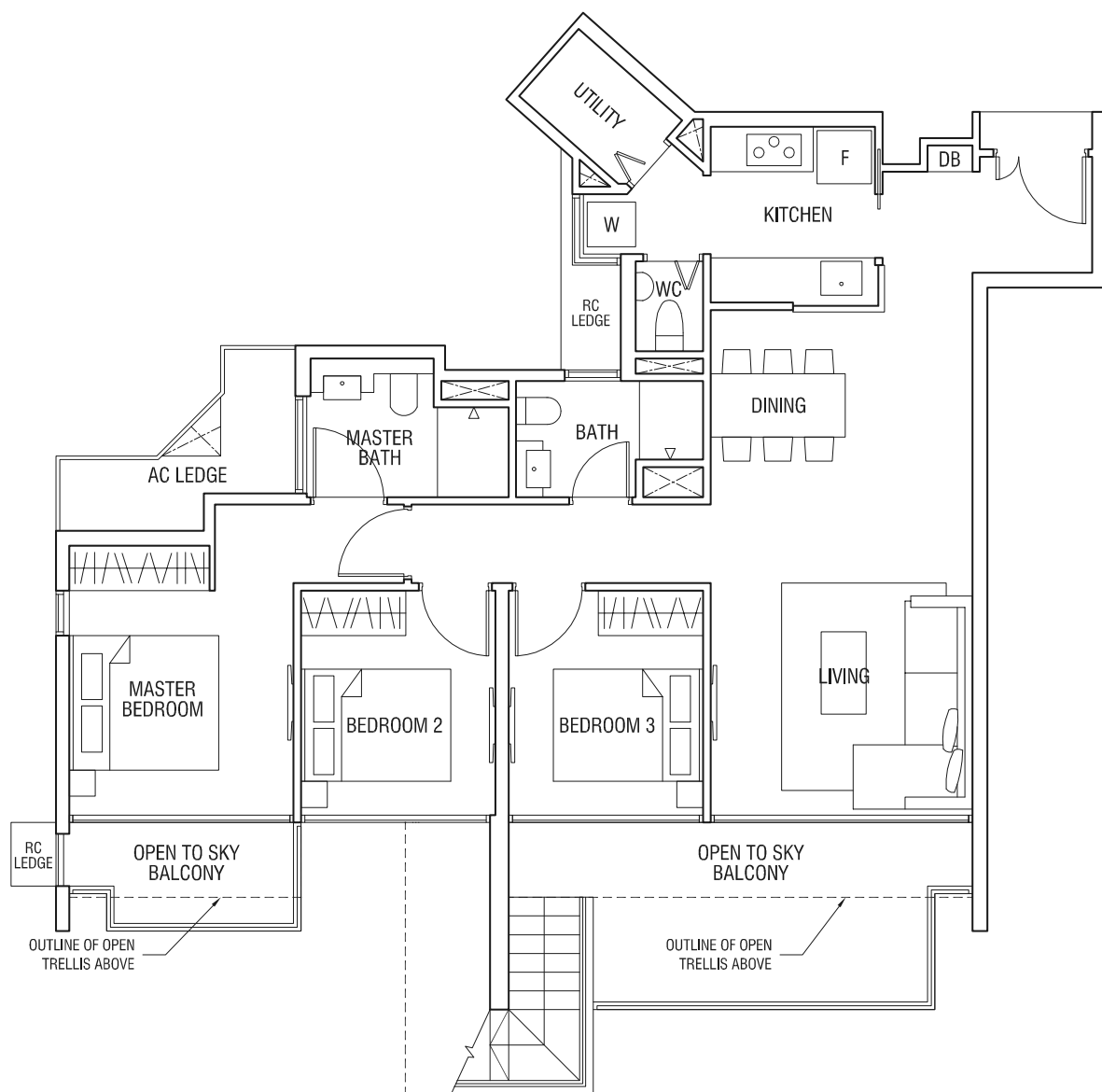
(Mirrored)

Unit #21-06

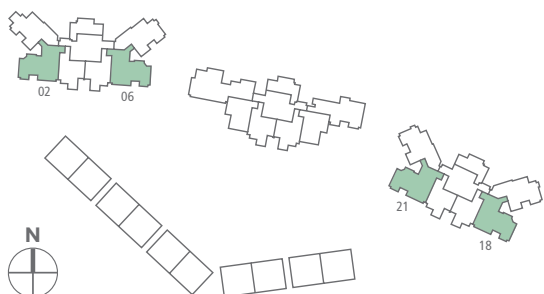
Unit #21-18



Upper Storey



Lower Storey



T H O M S O N
THREE

The plans are subject to change as may be required or approved by the relevant authorities.
Areas are estimates only and are subject to final survey. Plans are not drawn to scale.