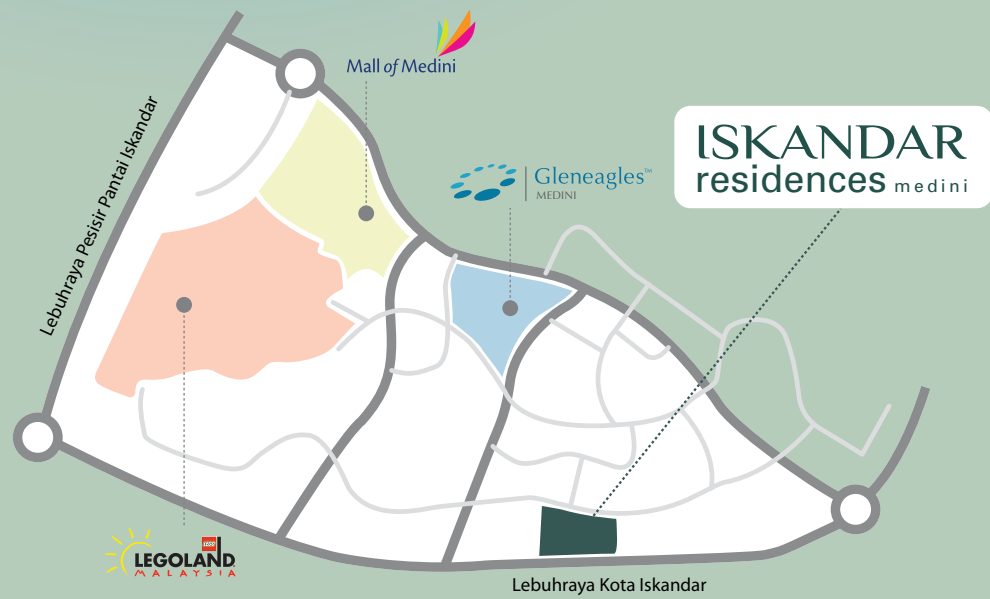
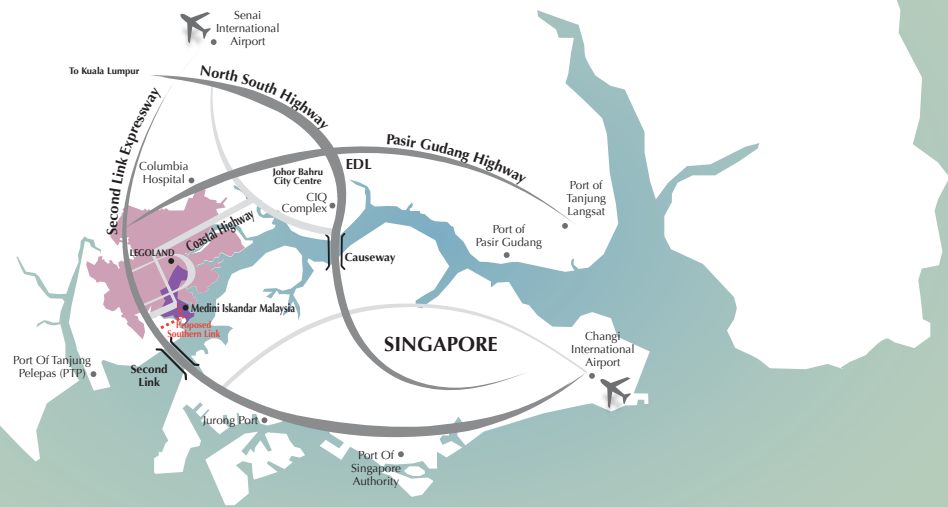


LOCATION MAP



ISKANDAR residences medini

Strategic Location

Approximate time of travel from **ISKANDAR residences medini**

- Kota Iskandar 3 min
- LEGOLAND Malaysia 4 min
- Gleneagles Medini Hospital 4 min
- EduCity 5 min
- Puteri Harbour 7 min
- Second Link to Singapore (Tuas) 10 min
- Southern Industrial and Logistics Clusters 10 min
- Bio-XCell (Biotechnology Park and Ecosystem) 10 min
- Columbia Asia Hospital 12 min
- Perling Toll 15 min
- Johor Bahru City Centre 16 min



• Pinewood Iskandar Malaysia



• Mall of Medini



• Marlborough College Malaysia



• Puteri Harbour



• Hello Kitty Themepark



• LEGOLAND Malaysia

Developer



Marketing Agent



Huttons International Pte Ltd (CEA Reg No. L30089371)

Development Order Ref. No.:
(16)dlm.MPJBT(PB/SW T)2/9(49)(X)
Development Lot No.:
PTD 170706, Zone A, Medini, Iskandar Malaysia

All information contained herein are subject to amendments, variations and modifications without notification as may be required by the relevant authorities or developer's consultants and is not intended to form and cannot form part of an offer and contract.



Discover Medini Iskandar's newest residential enclave.

Introducing Iskandar Residences, the Jewel of Medini. Experience its luxury, serene comfort and convenient access as a homeowner, or harness its precious potential for growth and expansion as an investor.





Distinctive.

- 640 exquisitely crafted suites in seven contemporary designs
- Sophisticated three-tier security system monitored by trained personnel 24 hours a day

Distinguished.

- Abundant natural greenery with beautiful landscaping
- Comprehensive lifestyle facilities including a Infinity Pool, Sky Pools, BBQ Deck and Exclusive Retail Experiences



Discerning.

- Strategic location, with close proximity to facilities including Gleneagles Hospital, Legoland, EduCity and the Johor CIQ
- Unlimited potential from being part of the Iskandar Region, with ready access to comprehensive world-class infrastructure



N
LEGEND

- | | | |
|---|--------------------------|------------------------|
| 1 GUARD HOUSE | 8 35M INFINITY POOL | 15 NURSERY |
| 2 SHOPS - MINIMART, LAUNDRETTE, CAFE | 9 50M INFINITY POOL | 16 GARDEN |
| 3 MAIN DROP-OFF | 10 POOL DECK | 17 SQUASH COURTS |
| 4 RECEPTION, MANAGEMENT OFFICE | 11 JACUZZI | 18 CHILDREN PLAYGROUND |
| 5 VISITOR'S CARPARK | 12 BBQ AREA | 19 YOUTH PLAYGROUND |
| 6 GYMNASIUM, FUNCTION HALL/ BADMINTON COURT | 13 ENTERTAINMENT TERRACE | 20 JOGGING TRACK |
| 7 KIDS POOL | 14 CHANGING ROOMS | |



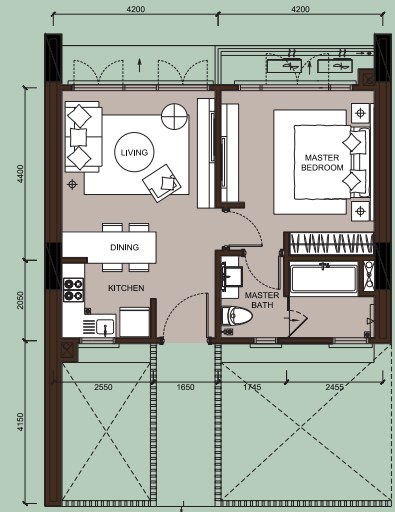
N
LEGEND

BLOCK A (LEVEL 40) and BLOCK B (LEVEL 29)

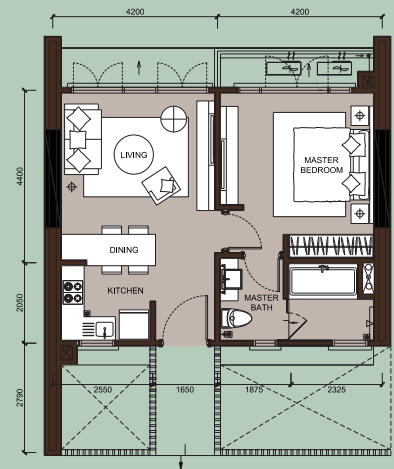
- | | |
|---------------------|-----------------|
| 1 SKY LOUNGE | 5 DECK/TERRACE |
| 2 READING | 6 DECK/TERRACE |
| 3 MINI GYM | 7 LAWN |
| 4 20M INFINITY POOL | 8 CHANGING ROOM |

BLOCK AI and BLOCK BI

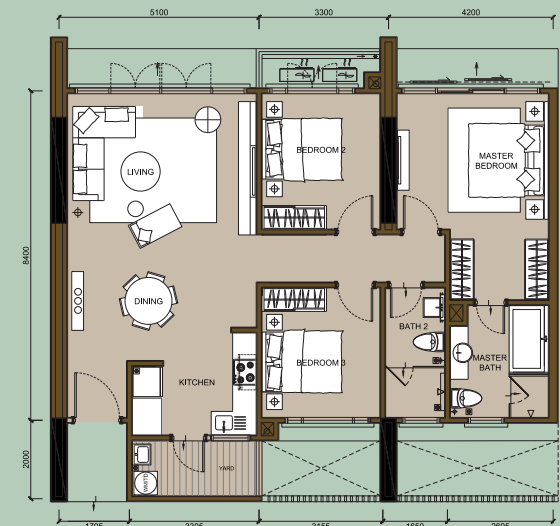
- | |
|-----------------------|
| 1 SKY GARDEN LEVEL 11 |
| 2 SKY GARDEN LEVEL 9 |



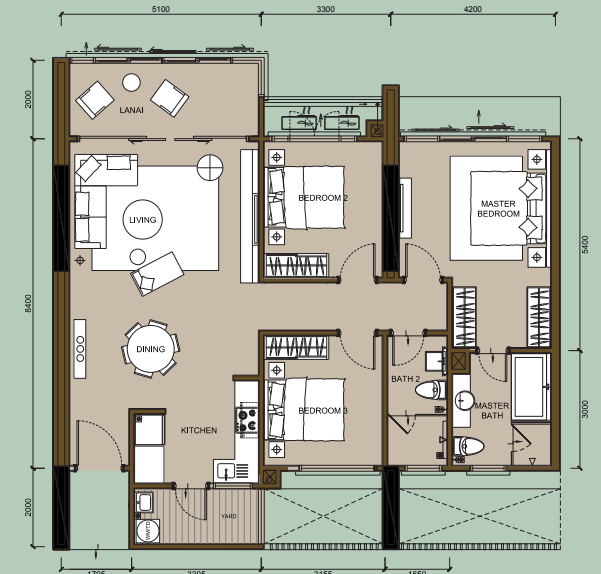
TYPE A



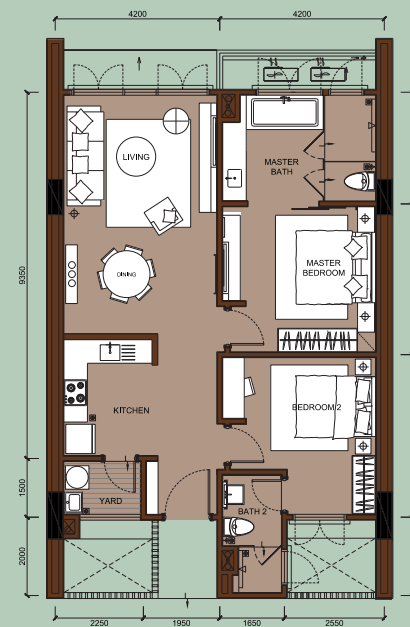
TYPE A1



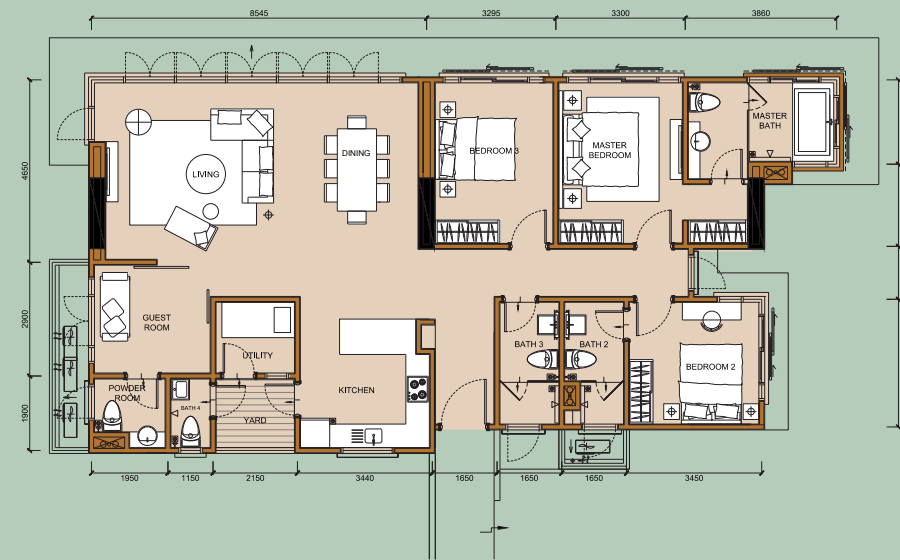
TYPE C



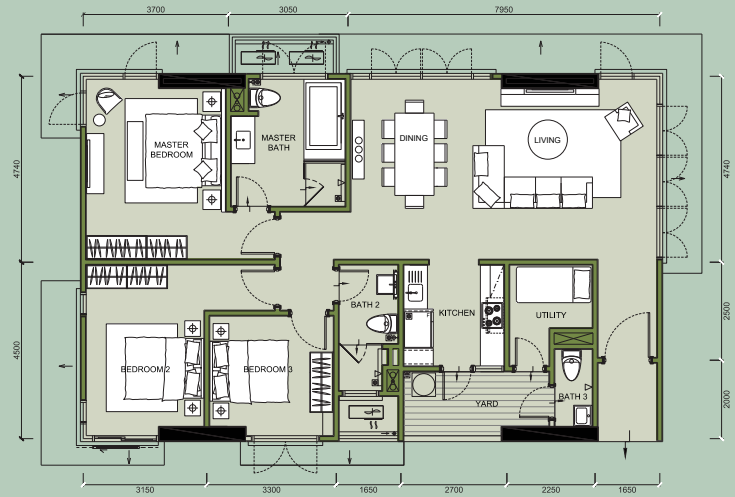
TYPE C1



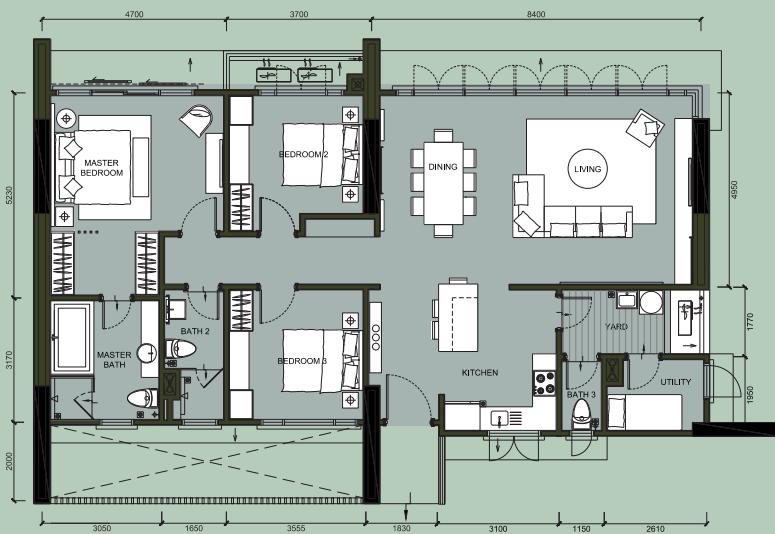
TYPE B



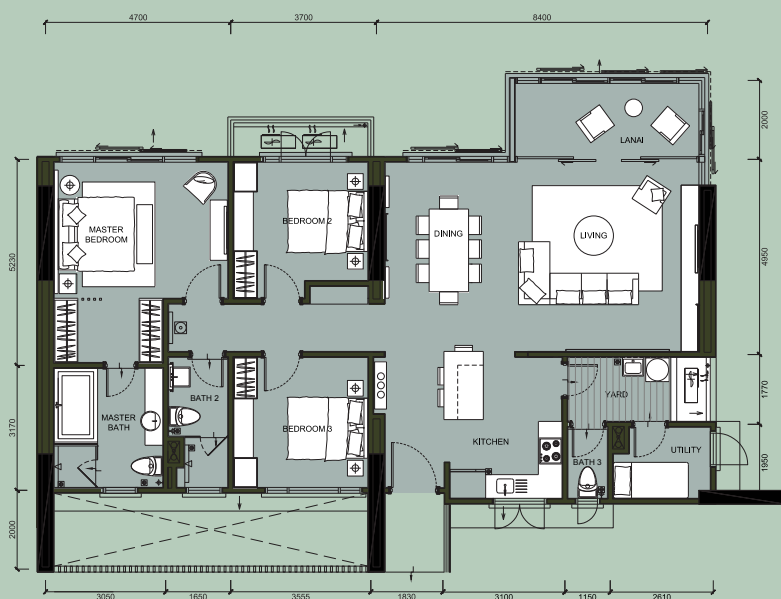
TYPE D



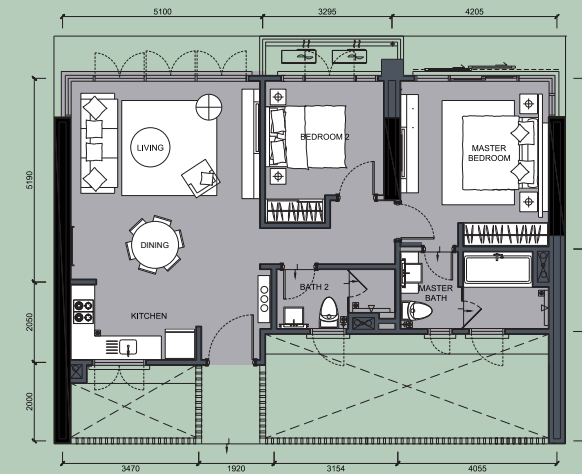
TYPE E



TYPE F



TYPE F1



TYPE G

