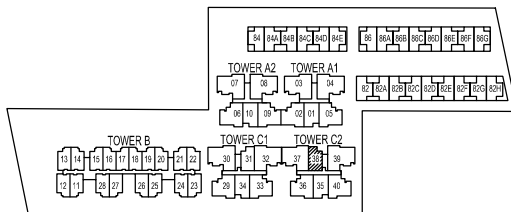
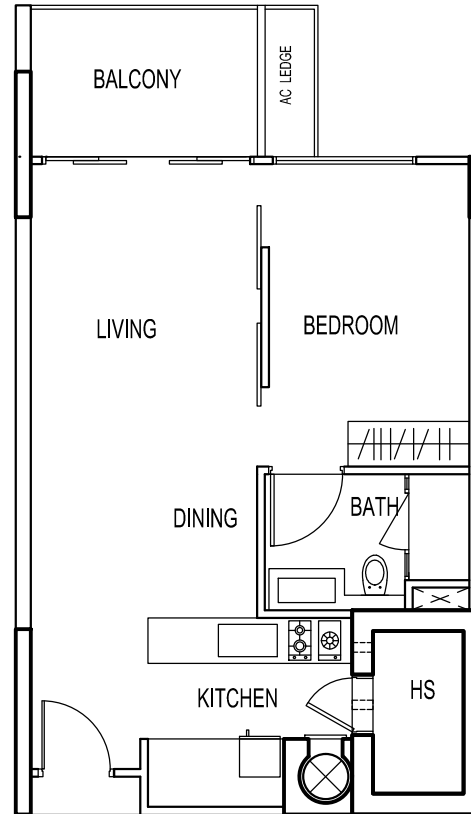



THE SEAWIND

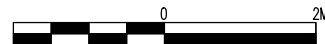
UNIT # 05-38
80 LORONG M TELOK KURAU

Type - A1(b)

BELOW PLAN IS SUBJECT TO CHANGE AS MAY BE
APPROVED BY THE RELEVANT AUTHORITIES



 KEY PLAN
NOT TO SCALE


SCALE 1 : 100

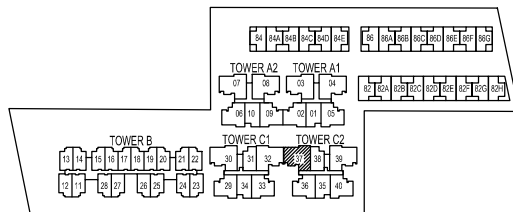
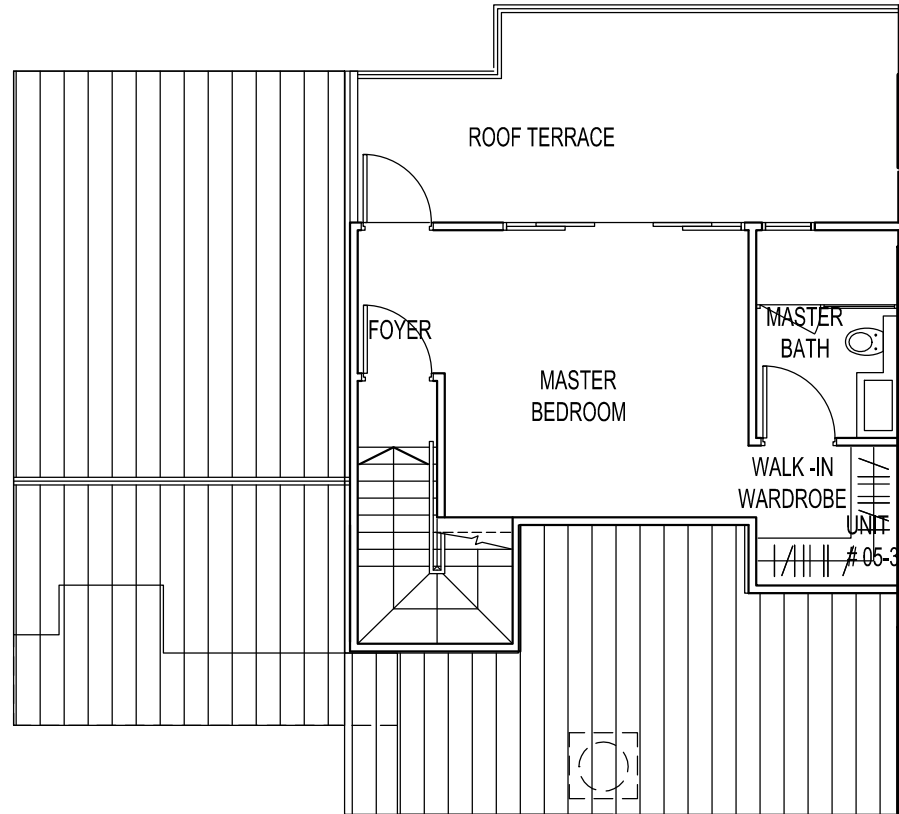
BP NO : A1136-00001-2008-BP01 DATED 24 OCT 2011

THE SEAWIND

UNIT # 05-37
80 LORONG M TELOK KURAU

Type - D2c

BELOW PLAN IS SUBJECT TO CHANGE AS MAY BE
APPROVED BY THE RELEVANT AUTHORITIES



 KEY PLAN
NOT TO SCALE



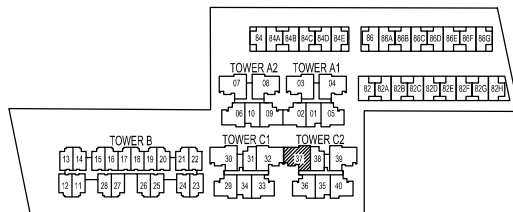
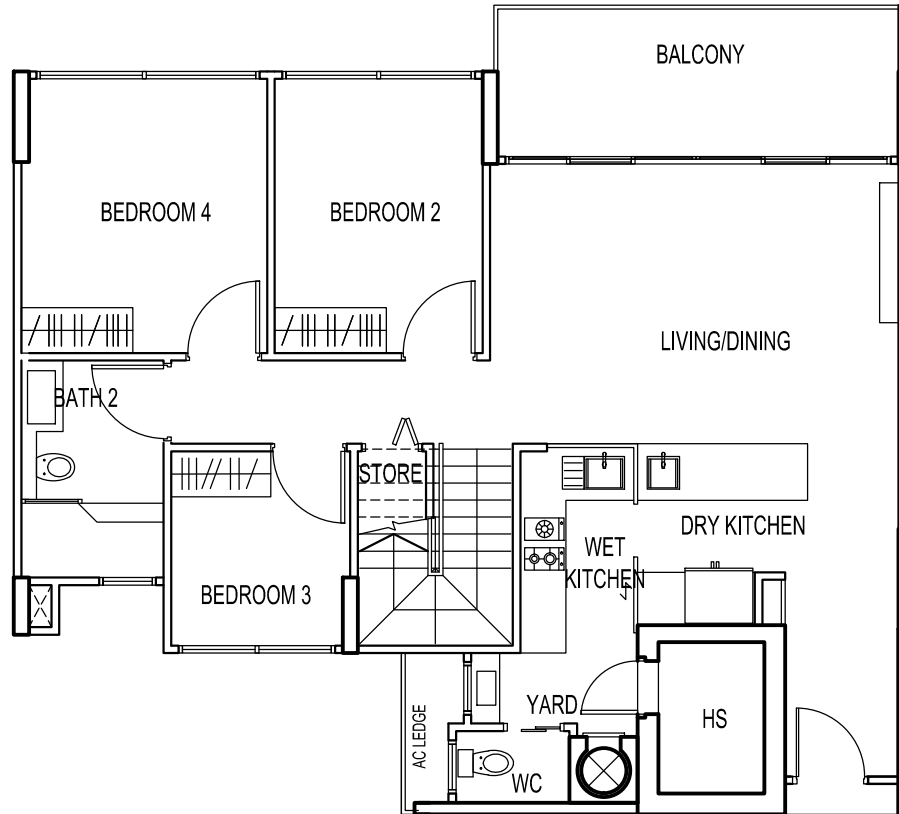
BP NO : A1136-00001-2008-BP01 DATED 24 OCT 2011

THE SEAWIND

UNIT # 05-37
80 LORONG M TELOK KURAU

Type - D2c

BELOW PLAN IS SUBJECT TO CHANGE AS MAY BE APPROVED BY THE RELEVANT AUTHORITIES



 KEY PLAN
NOT TO SCALE



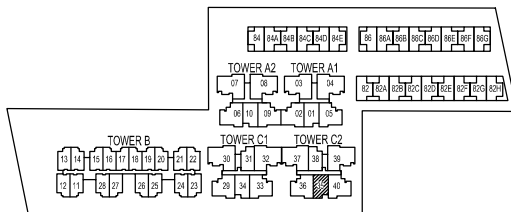
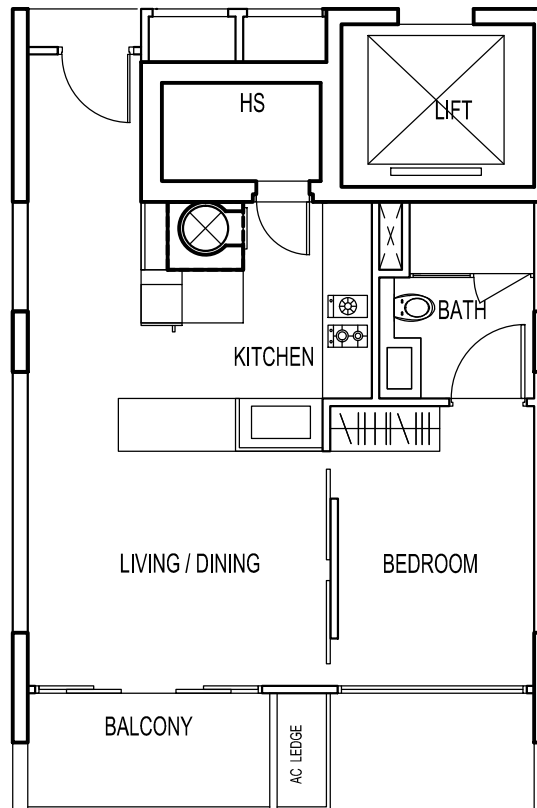
BP NO : A1136-00001-2008-BP01 DATED 24 OCT 2011

THE SEAWIND

UNIT # 05-35
70 LORONG M TELOK KURAU

Type - A2(b)

BELOW PLAN IS SUBJECT TO CHANGE AS MAY BE
APPROVED BY THE RELEVANT AUTHORITIES



KEY PLAN
NOT TO SCALE



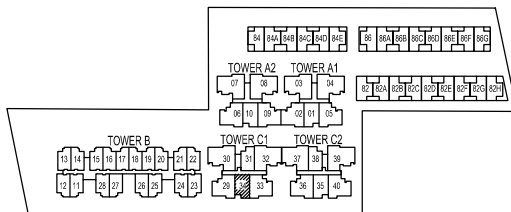
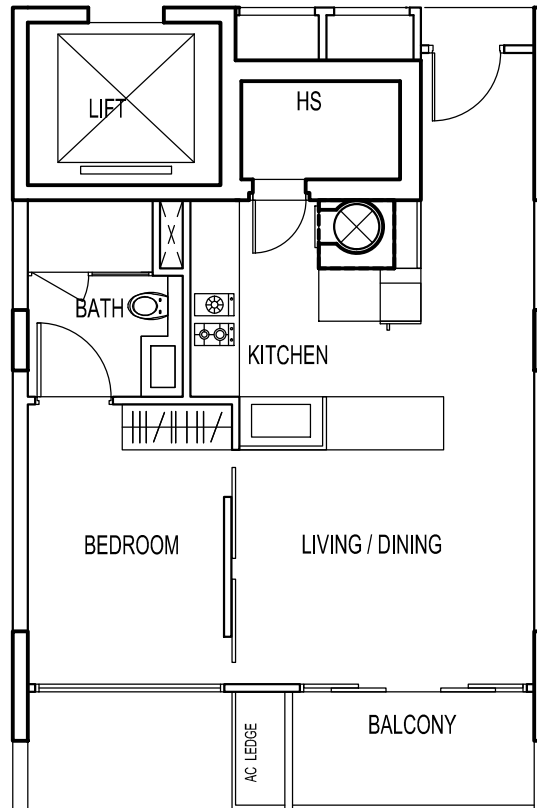
BP NO : A1136-00001-2008-BP01 DATED 24 OCT 2011

THE SEAWIND

UNIT # 05-34
78 LORONG M TELOK KURAU

Type - A2(b)

BELOW PLAN IS SUBJECT TO CHANGE AS MAY BE
APPROVED BY THE RELEVANT AUTHORITIES



 KEY PLAN
NOT TO SCALE



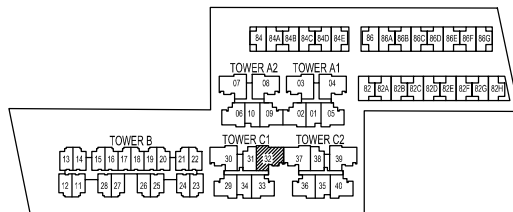
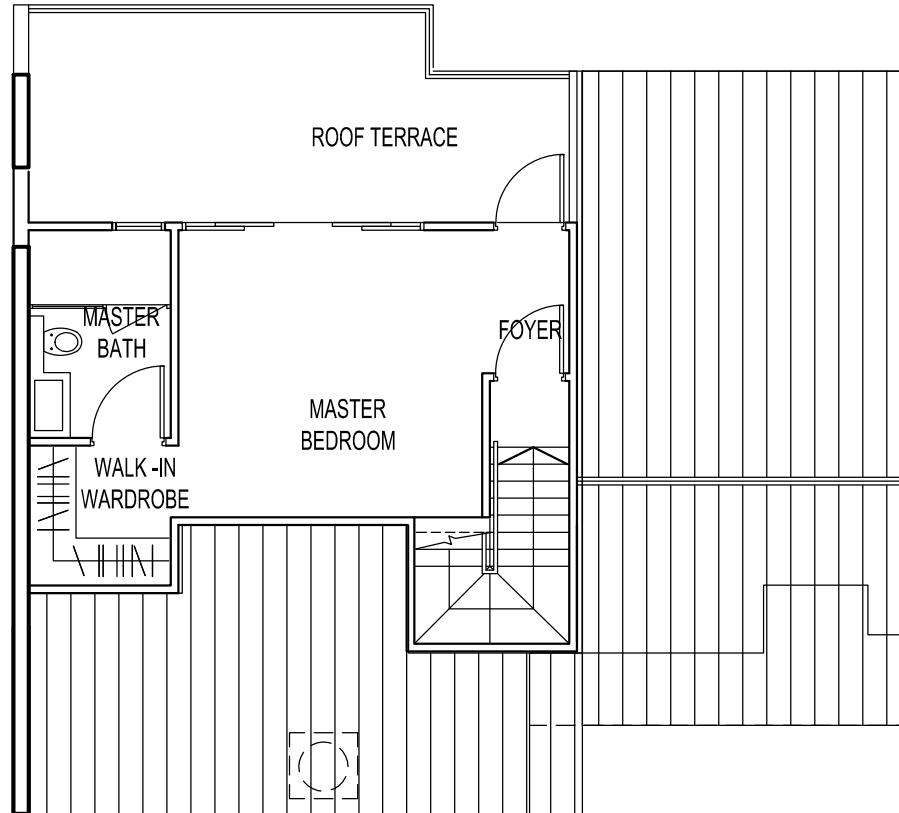
BP NO : A1136-00001-2008-BP01 DATED 24 OCT 2011

THE SEAWIND

UNIT # 05-32
78 LORONG M TELOK KURAU

Type - D2c

BELOW PLAN IS SUBJECT TO CHANGE AS MAY BE
APPROVED BY THE RELEVANT AUTHORITIES



KEY PLAN
NOT TO SCALE



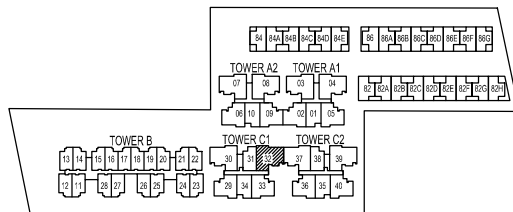
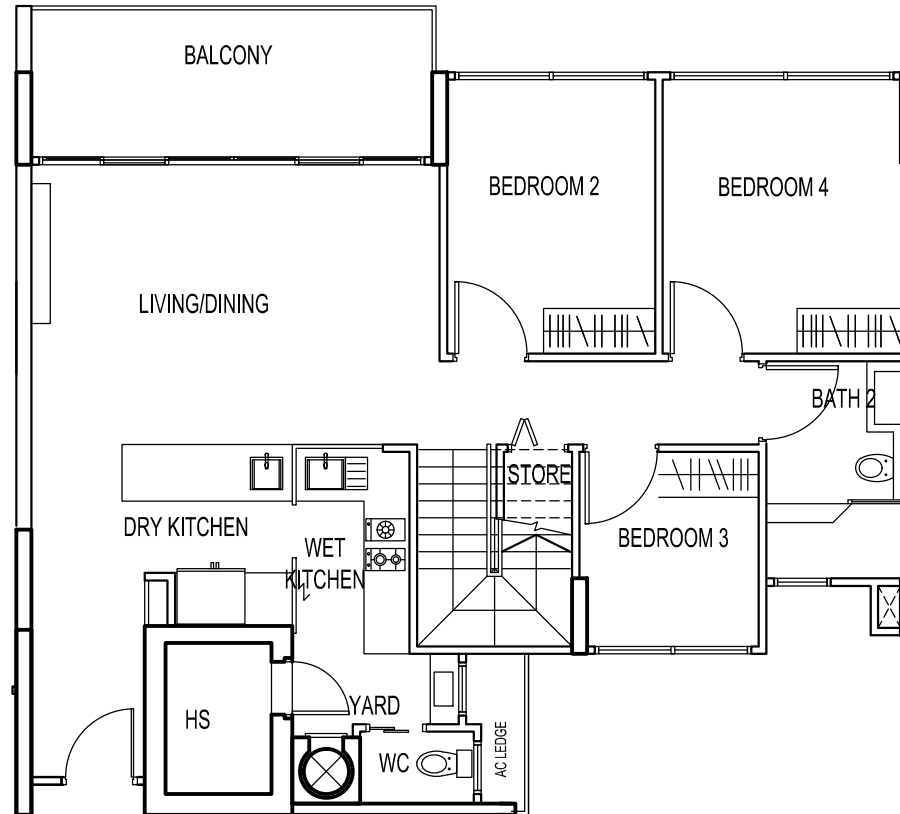
BP NO : A1136-00001-2008-BP01 DATED 24 OCT 2011

THE SEAWIND

UNIT # 05-32
78 LORONG M TELOK KURAU

Type - D2c

BELOW PLAN IS SUBJECT TO CHANGE AS MAY BE
APPROVED BY THE RELEVANT AUTHORITIES



 KEY PLAN
NOT TO SCALE



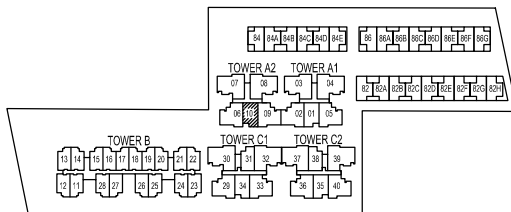
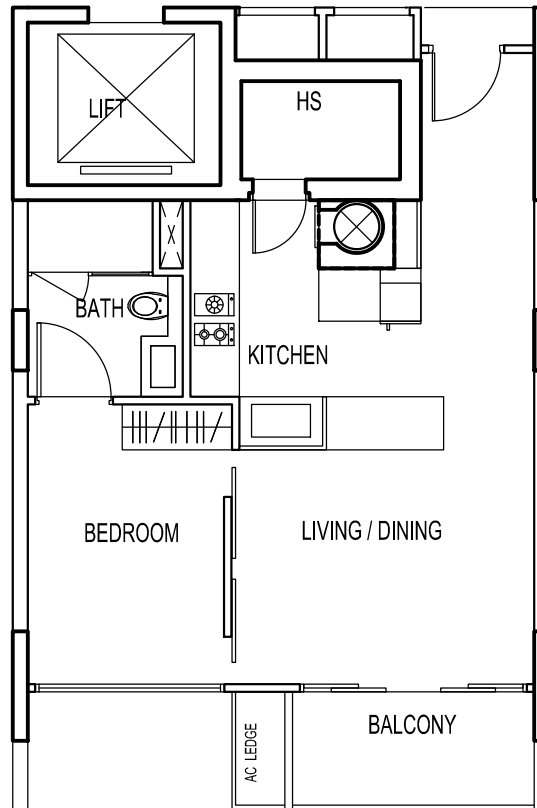
BP NO : A1136-00001-2008-BP01 DATED 24 OCT 2011


THE SEAWIND

UNIT # 05-10
72 LORONG M TELOK KURAU

Type - A2(b)

BELOW PLAN IS SUBJECT TO CHANGE AS MAY BE
APPROVED BY THE RELEVANT AUTHORITIES



 KEY PLAN
NOT TO SCALE


SCALE 1 : 100

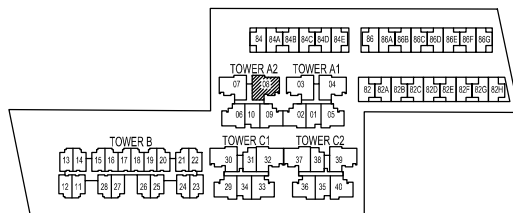
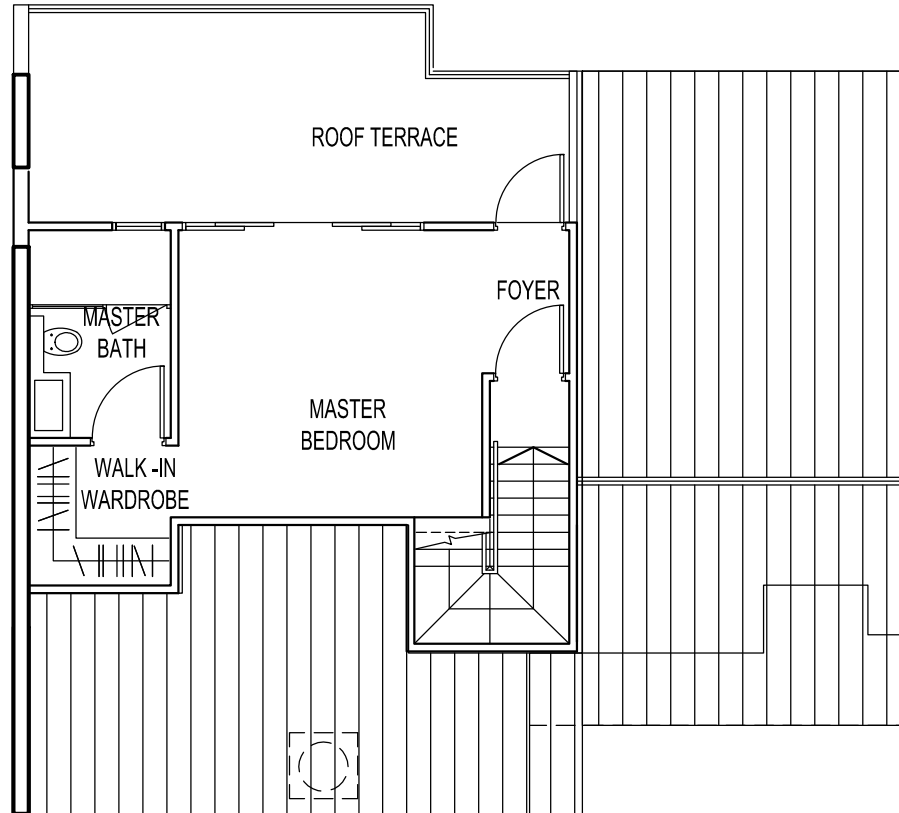
BP NO : A1136-00001-2008-BP01 DATED 24 OCT 2011

THE SEAWIND

UNIT # 05-08
72 LORONG M TELOK KURAU

Type - D1c

BELOW PLAN IS SUBJECT TO CHANGE AS MAY BE
APPROVED BY THE RELEVANT AUTHORITIES



KEY PLAN
NOT TO SCALE



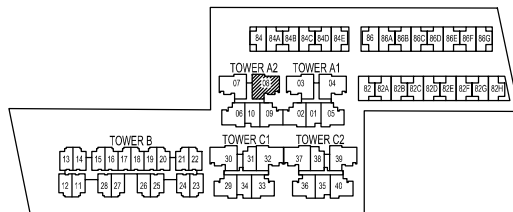
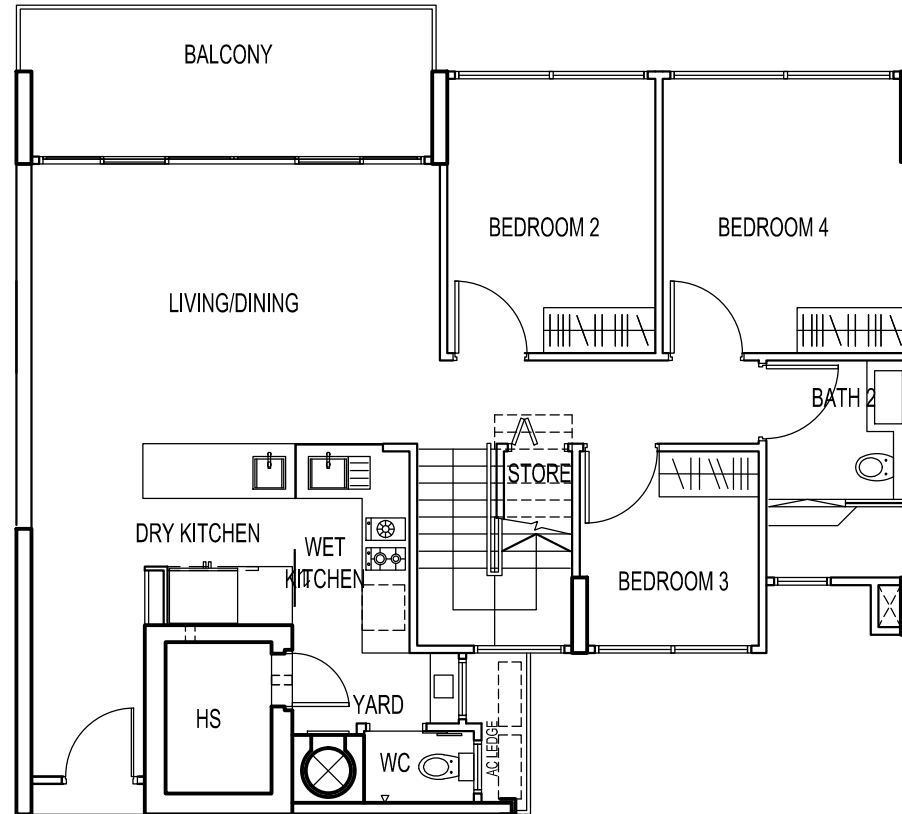
BP NO : A1136-00001-2008-BP01 DATED 24 OCT 2011

THE SEAWIND

UNIT # 05-08
72 LORONG M TELOK KURAU

Type - D1c

BELOW PLAN IS SUBJECT TO CHANGE AS MAY BE
APPROVED BY THE RELEVANT AUTHORITIES



 KEY PLAN
NOT TO SCALE



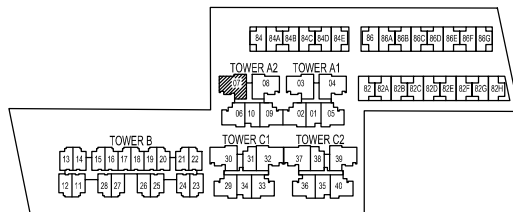
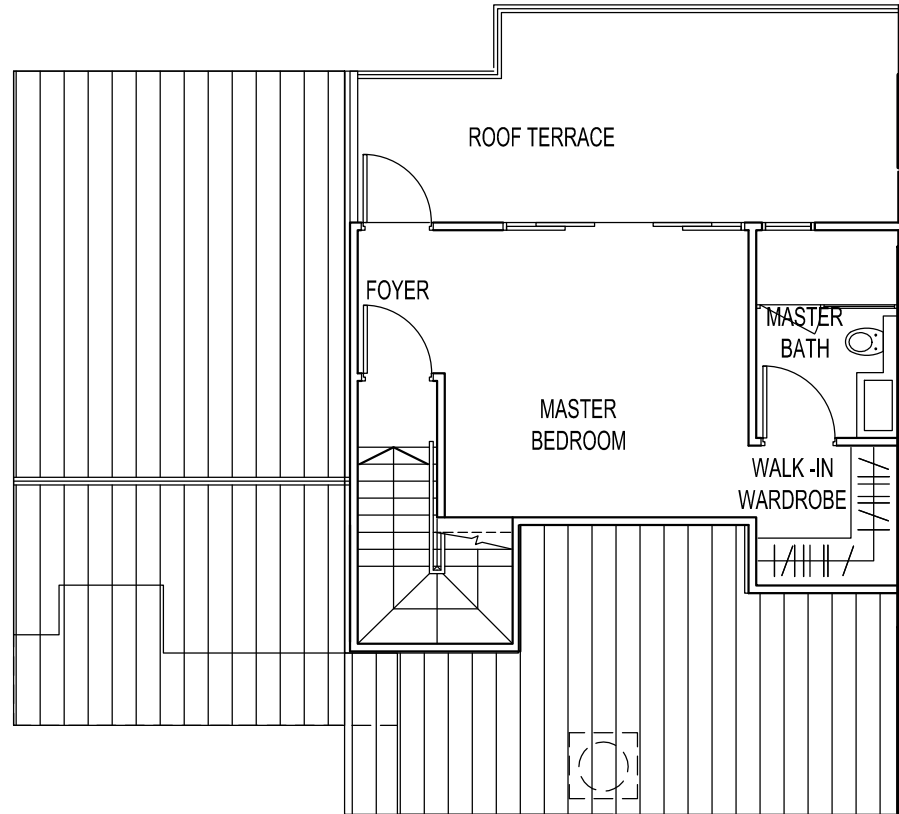
BP NO : A1136-00001-2008-BP01 DATED 24 OCT 2011

THE SEAWIND

UNIT # 05-07
72 LORONG M TELOK KURAU

Type - D1c

BELOW PLAN IS SUBJECT TO CHANGE AS MAY BE
APPROVED BY THE RELEVANT AUTHORITIES



KEY PLAN
NOT TO SCALE



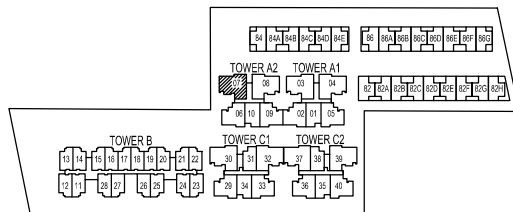
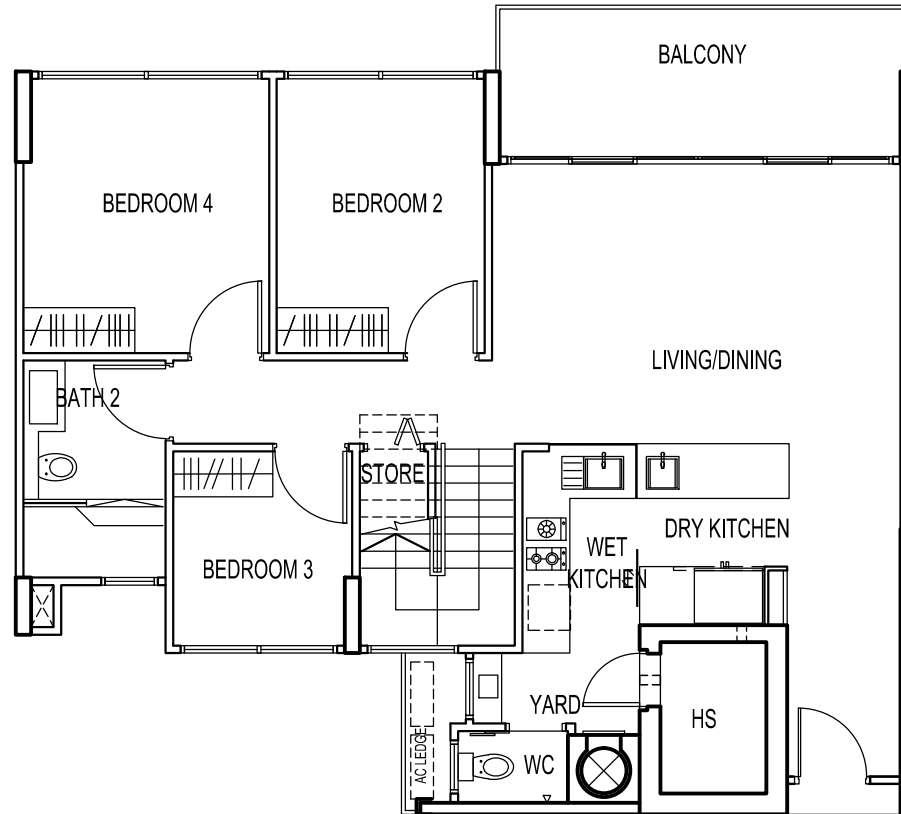
BP NO : A1136-00001-2008-BP01 DATED 24 OCT 2011

THE SEAWIND

UNIT # 05-07
72 LORONG M TELOK KURAU

Type - D1c

BELOW PLAN IS SUBJECT TO CHANGE AS MAY BE
APPROVED BY THE RELEVANT AUTHORITIES



 KEY PLAN
NOT TO SCALE



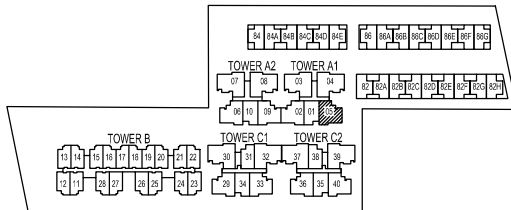
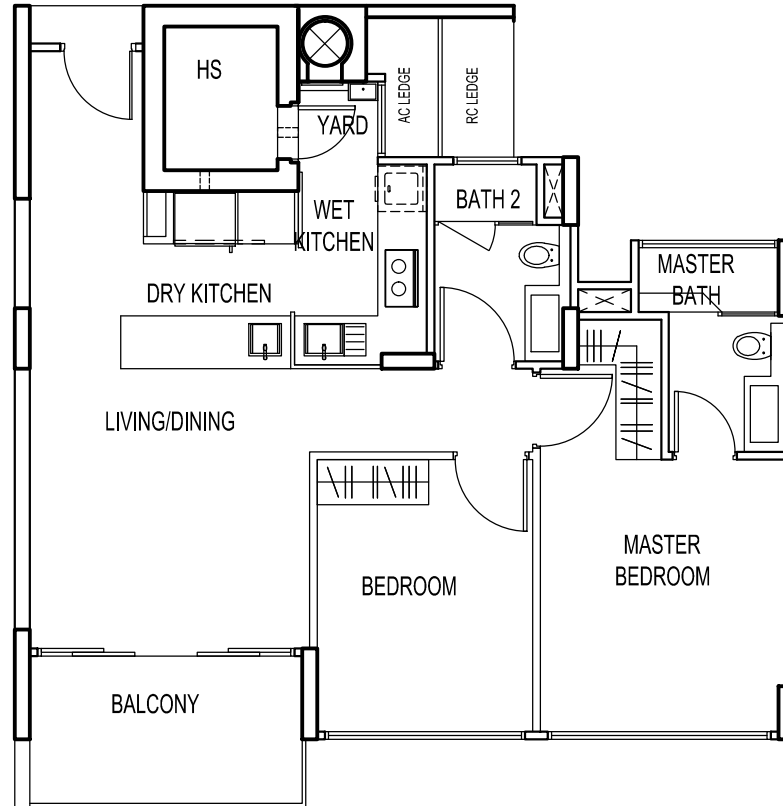
BP NO : A1136-00001-2008-BP01 DATED 24 OCT 2011

THE SEAWIND

UNIT # 05-05
70 LORONG M TELOK KURAU

Type - B2(b)

BELOW PLAN IS SUBJECT TO CHANGE AS MAY BE
APPROVED BY THE RELEVANT AUTHORITIES



KEY PLAN
NOT TO SCALE



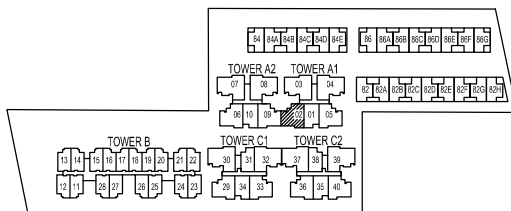
BP NO : A1136-00001-2008-BP01 DATED 24 OCT 2011

THE SEAWIND

UNIT # 05-02
70 LORONG M TELOK KURAU

Type - B3(b)

BELOW PLAN IS SUBJECT TO CHANGE AS MAY BE
APPROVED BY THE RELEVANT AUTHORITIES



KEY PLAN
NOT TO SCALE



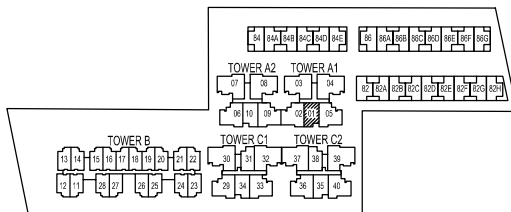
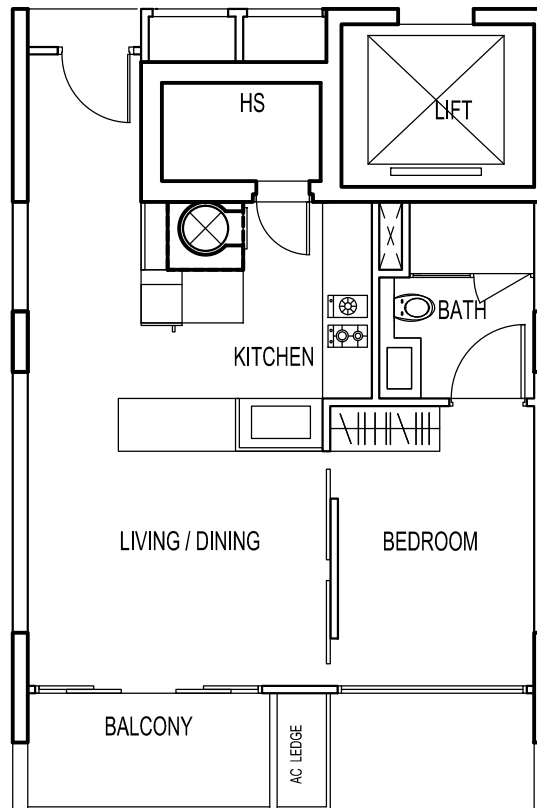
BP NO : A1136-00001-2008-BP01 DATED 24 OCT 2011

THE SEAWIND

UNIT # 05-01
70 LORONG M TELOK KURAU

Type - A2(b)

BELOW PLAN IS SUBJECT TO CHANGE AS MAY BE
APPROVED BY THE RELEVANT AUTHORITIES



KEY PLAN
NOT TO SCALE



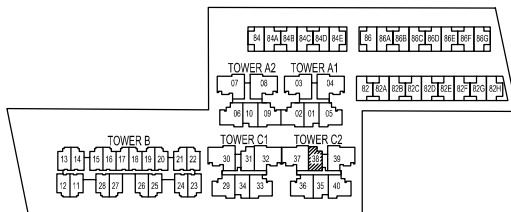
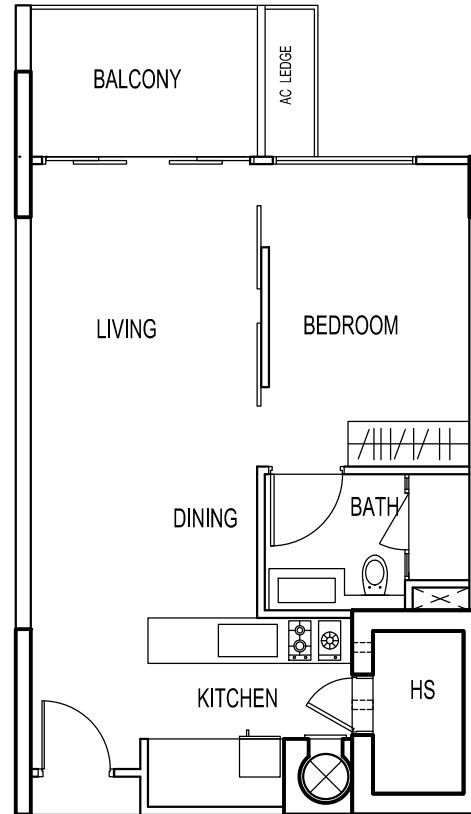
BP NO : A1136-00001-2008-BP01 DATED 24 OCT 2011


THE SEAWIND

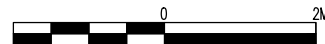
UNIT # 04-38
80 LORONG M TELOK KURAU

Type - A1(b)

BELOW PLAN IS SUBJECT TO CHANGE AS MAY BE
APPROVED BY THE RELEVANT AUTHORITIES



 KEY PLAN
NOT TO SCALE


SCALE 1 : 100

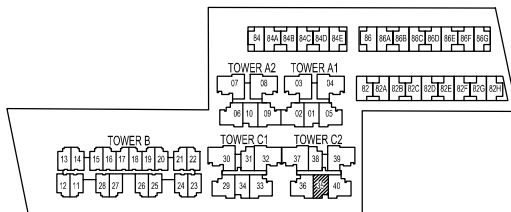
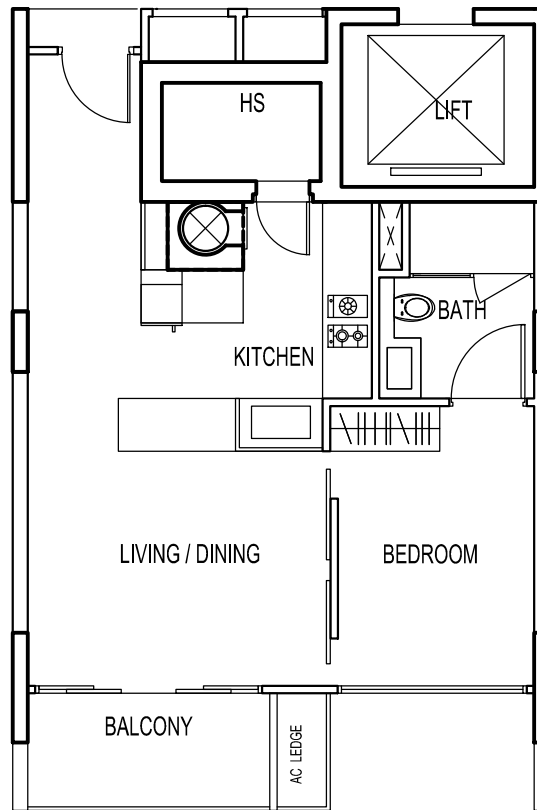
BP NO : A1136-00001-2008-BP01 DATED 24 OCT 2011

THE SEAWIND

UNIT # 04-35
70 LORONG M TELOK KURAU

Type - A2(b)

BELOW PLAN IS SUBJECT TO CHANGE AS MAY BE
APPROVED BY THE RELEVANT AUTHORITIES



KEY PLAN
NOT TO SCALE



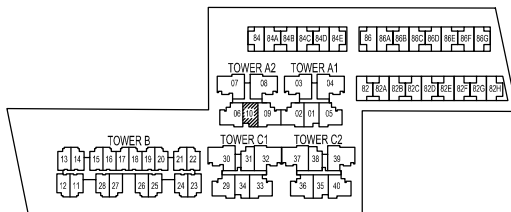
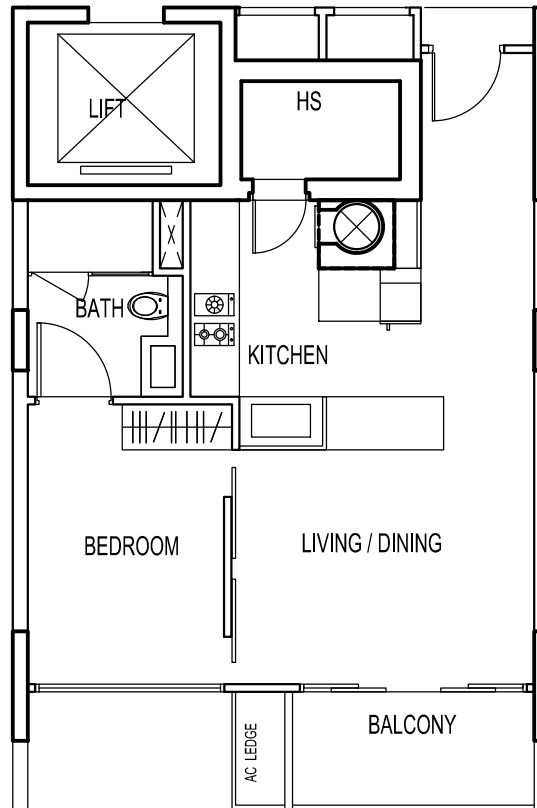
BP NO : A1136-00001-2008-BP01 DATED 24 OCT 2011


THE SEAWIND

UNIT # 04-10
72 LORONG M TELOK KURAU

Type - A2(b)

BELOW PLAN IS SUBJECT TO CHANGE AS MAY BE
APPROVED BY THE RELEVANT AUTHORITIES



 KEY PLAN
NOT TO SCALE



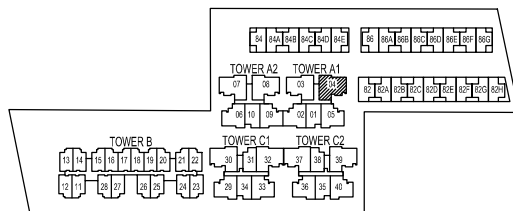
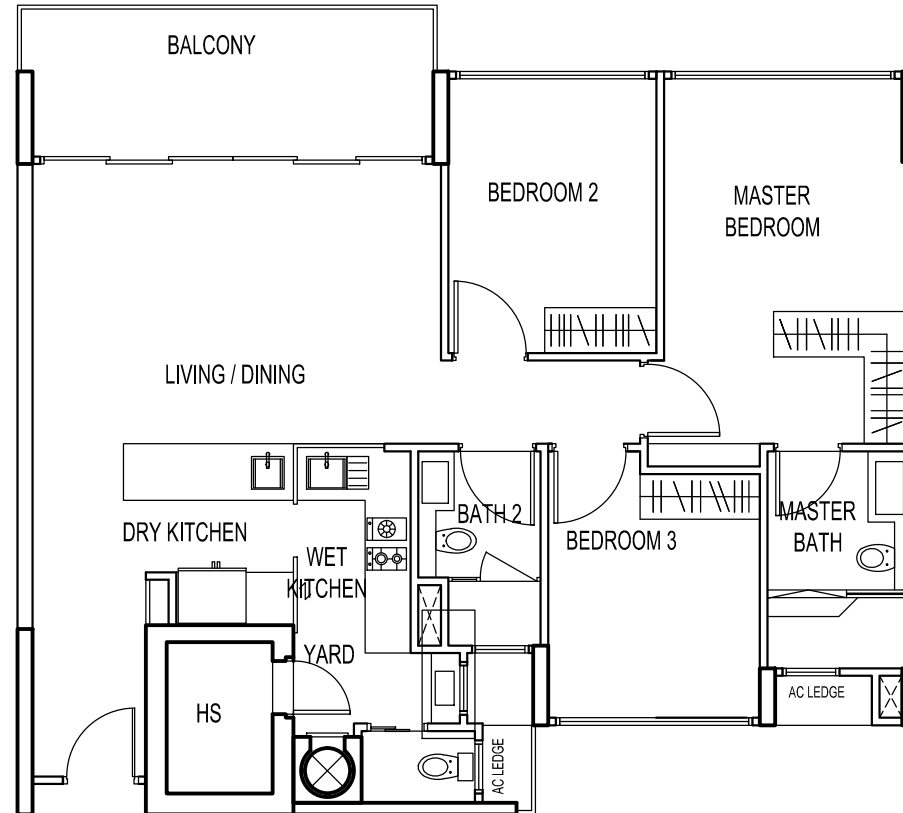
BP NO : A1136-00001-2008-BP01 DATED 24 OCT 2011

THE SEAWIND

UNIT # 04-04
70 LORONG M TELOK KURAU

Type - C1(b)

BELOW PLAN IS SUBJECT TO CHANGE AS MAY BE APPROVED BY THE RELEVANT AUTHORITIES



 KEY PLAN
NOT TO SCALE



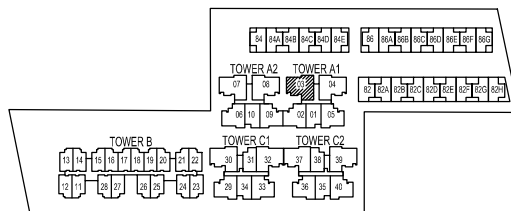
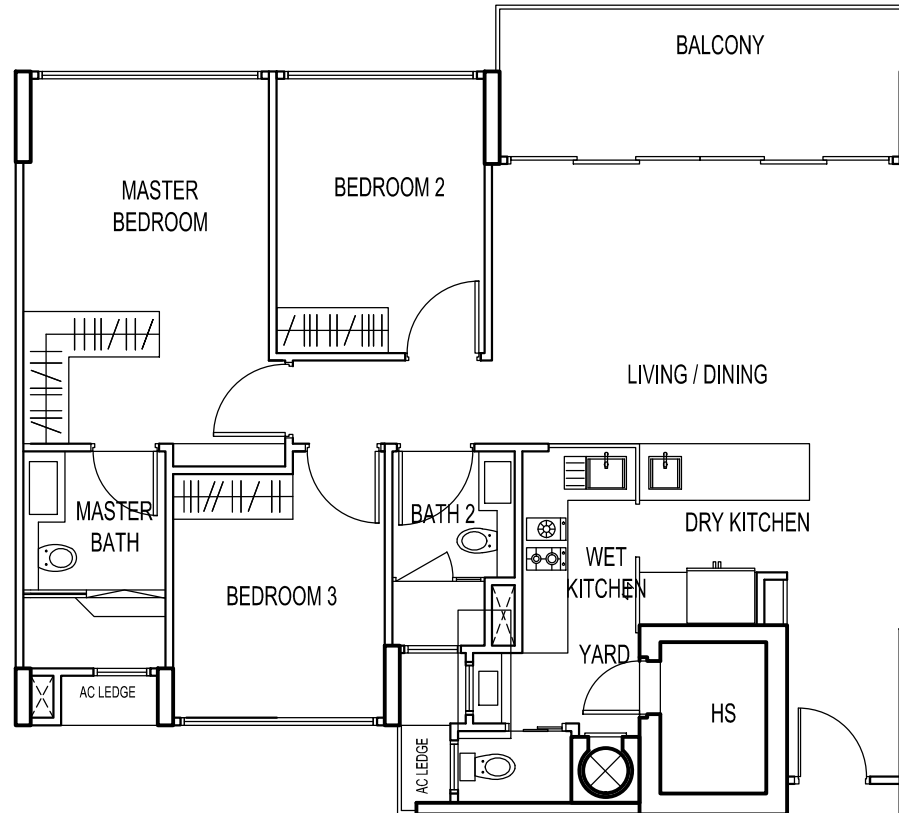
BP NO : A1136-00001-2008-BP01 DATED 24 OCT 2011

THE SEAWIND

UNIT # 04-03
70 LORONG M TELOK KURAU

Type - C1(b)

BELOW PLAN IS SUBJECT TO CHANGE AS MAY BE
APPROVED BY THE RELEVANT AUTHORITIES



 KEY PLAN
NOT TO SCALE



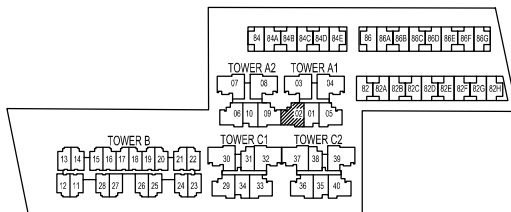
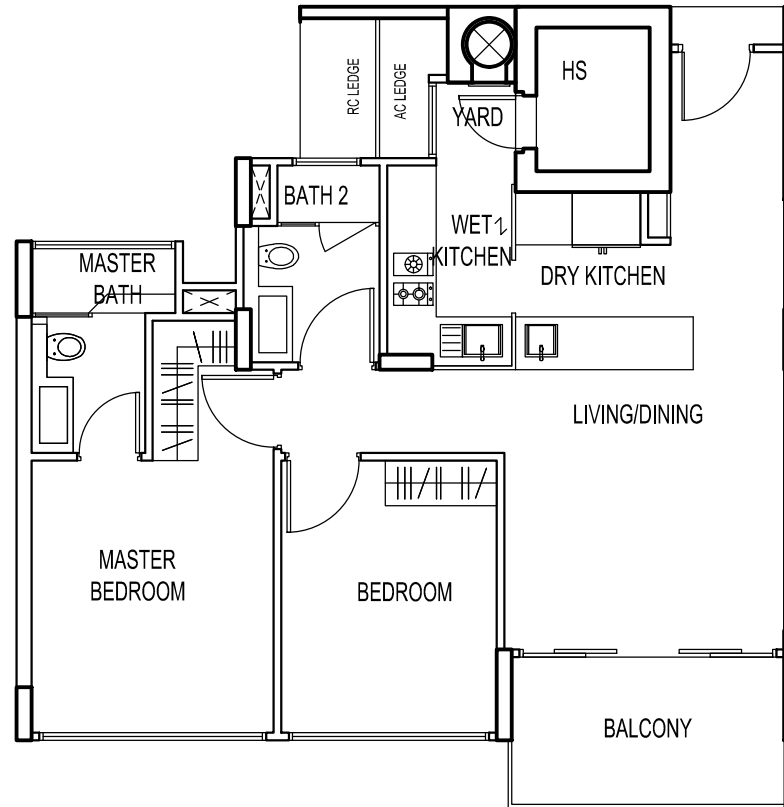
BP NO : A1136-00001-2008-BP01 DATED 24 OCT 2011

THE SEAWIND

UNIT # 04-02
70 LORONG M TELOK KURAU

Type - B3(b)

BELOW PLAN IS SUBJECT TO CHANGE AS MAY BE
APPROVED BY THE RELEVANT AUTHORITIES



KEY PLAN
NOT TO SCALE



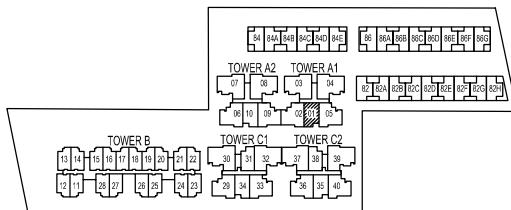
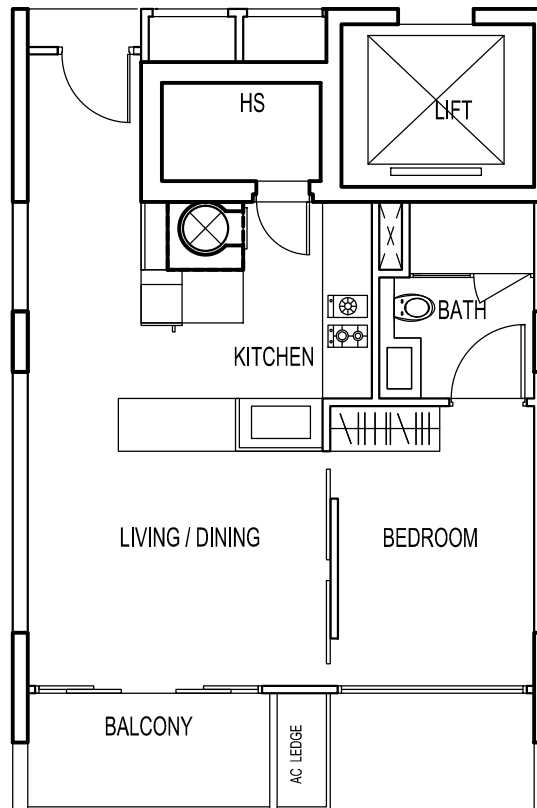
BP NO : A1136-00001-2008-BP01 DATED 24 OCT 2011

THE SEAWIND

UNIT # 04-01
70 LORONG M TELOK KURAU

Type - A2(b)

BELOW PLAN IS SUBJECT TO CHANGE AS MAY BE
APPROVED BY THE RELEVANT AUTHORITIES



KEY PLAN
NOT TO SCALE



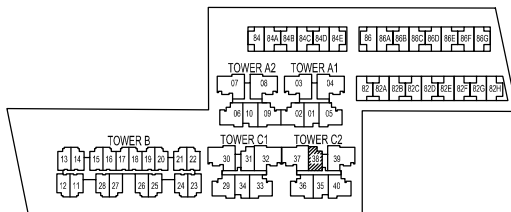
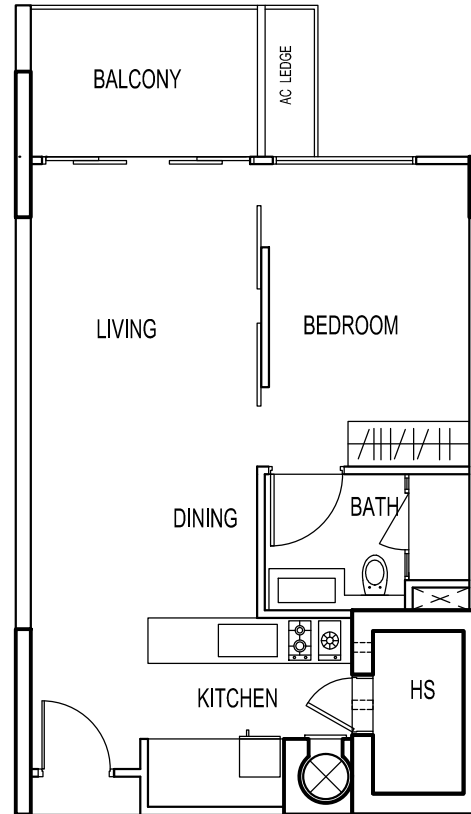
BP NO : A1136-00001-2008-BP01 DATED 24 OCT 2011

THE SEAWIND

UNIT # 03-38
80 LORONG M TELOK KURAU

Type - A1(b)

BELOW PLAN IS SUBJECT TO CHANGE AS MAY BE
APPROVED BY THE RELEVANT AUTHORITIES



KEY PLAN
NOT TO SCALE



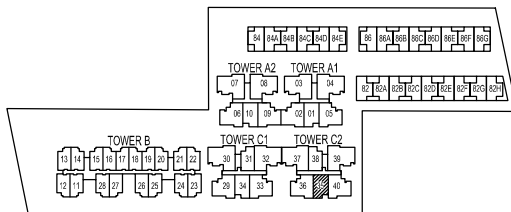
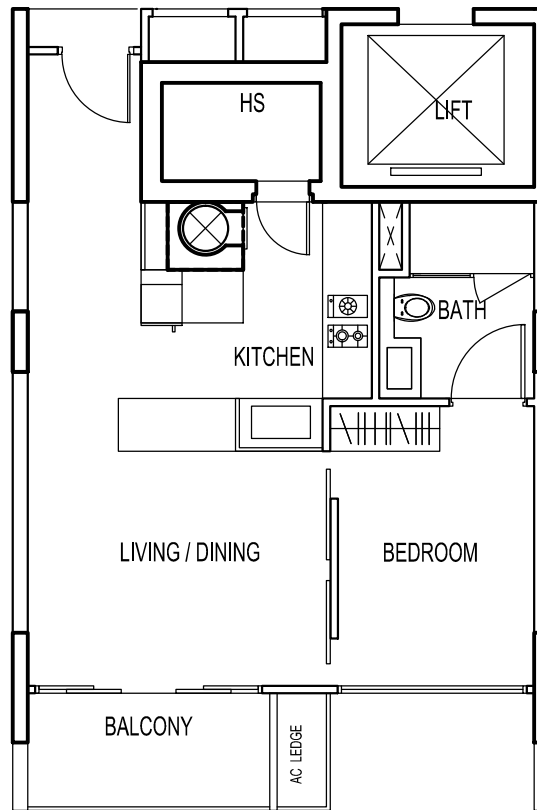
BP NO : A1136-00001-2008-BP01 DATED 24 OCT 2011

THE SEAWIND

UNIT # 03-35
70 LORONG M TELOK KURAU

Type - A2(b)

BELOW PLAN IS SUBJECT TO CHANGE AS MAY BE
APPROVED BY THE RELEVANT AUTHORITIES



KEY PLAN
NOT TO SCALE



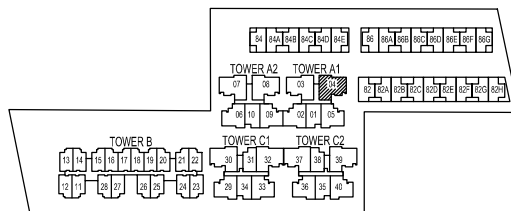
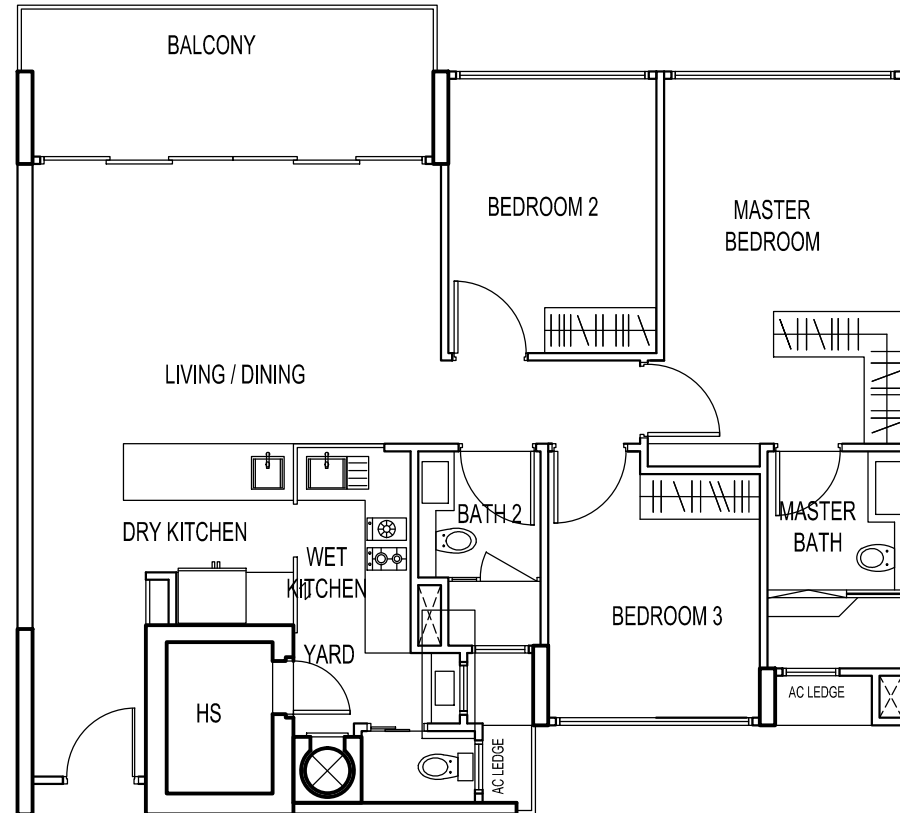
BP NO : A1136-00001-2008-BP01 DATED 24 OCT 2011

THE SEAWIND

UNIT # 03-04
70 LORONG M TELOK KURAU

Type - C1(b)

BELOW PLAN IS SUBJECT TO CHANGE AS MAY BE
APPROVED BY THE RELEVANT AUTHORITIES



 KEY PLAN
NOT TO SCALE


SCALE 1 : 100

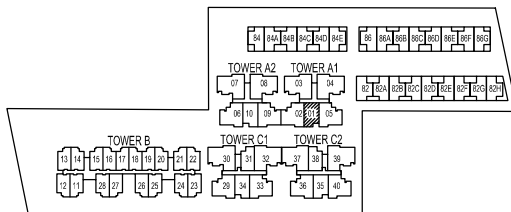
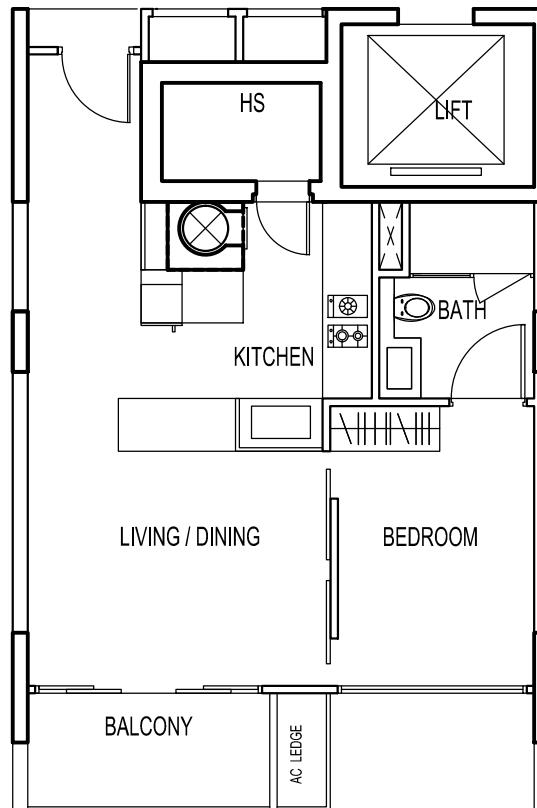
BP NO : A1136-00001-2008-BP01 DATED 24 OCT 2011

THE SEAWIND

UNIT # 03-01
70 LORONG M TELOK KURAU

Type - A2(b)

BELOW PLAN IS SUBJECT TO CHANGE AS MAY BE
APPROVED BY THE RELEVANT AUTHORITIES



KEY PLAN
NOT TO SCALE



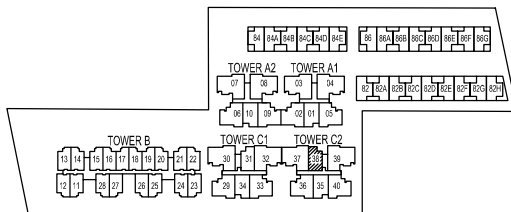
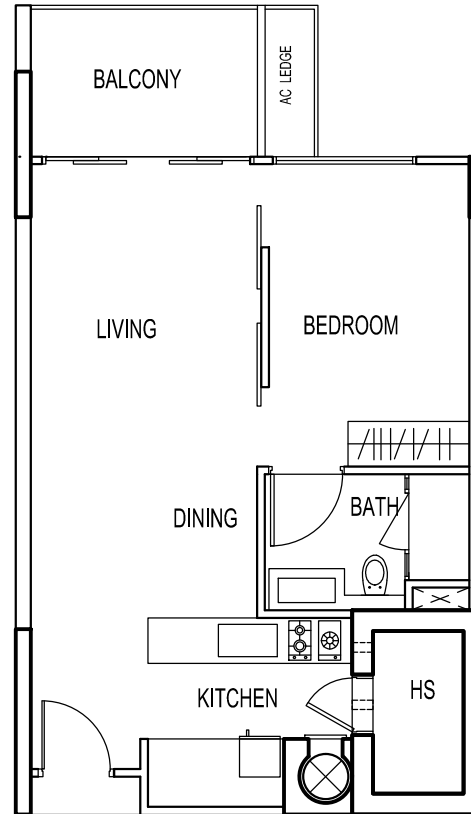
BP NO : A1136-00001-2008-BP01 DATED 24 OCT 2011

THE SEAWIND

UNIT # 02-38
80 LORONG M TELOK KURAU

Type - A1(b)

BELOW PLAN IS SUBJECT TO CHANGE AS MAY BE
APPROVED BY THE RELEVANT AUTHORITIES



KEY PLAN
NOT TO SCALE



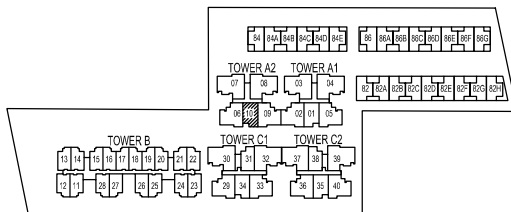
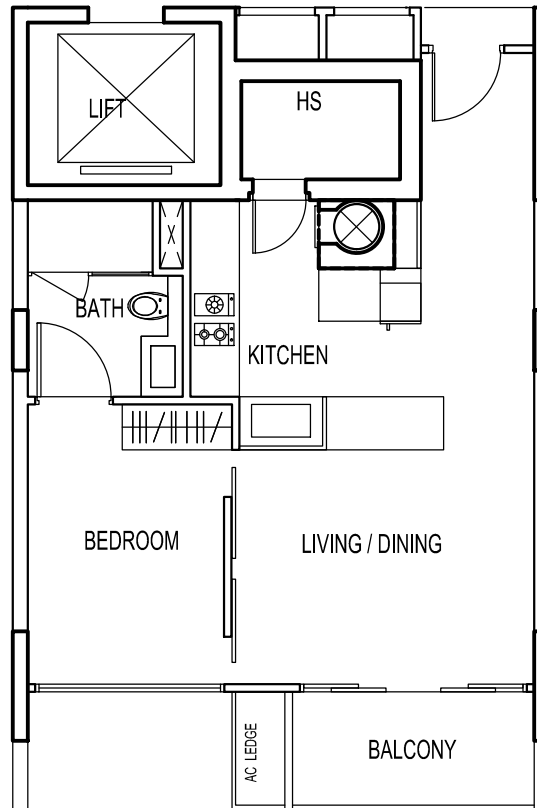
BP NO : A1136-00001-2008-BP01 DATED 24 OCT 2011

THE SEAWIND

UNIT # 02-10
72 LORONG M TELOK KURAU

Type - A2(b)

BELOW PLAN IS SUBJECT TO CHANGE AS MAY BE
APPROVED BY THE RELEVANT AUTHORITIES



 KEY PLAN
NOT TO SCALE


SCALE 1 : 100

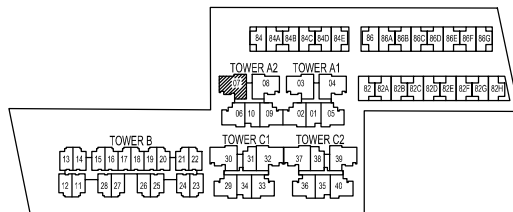
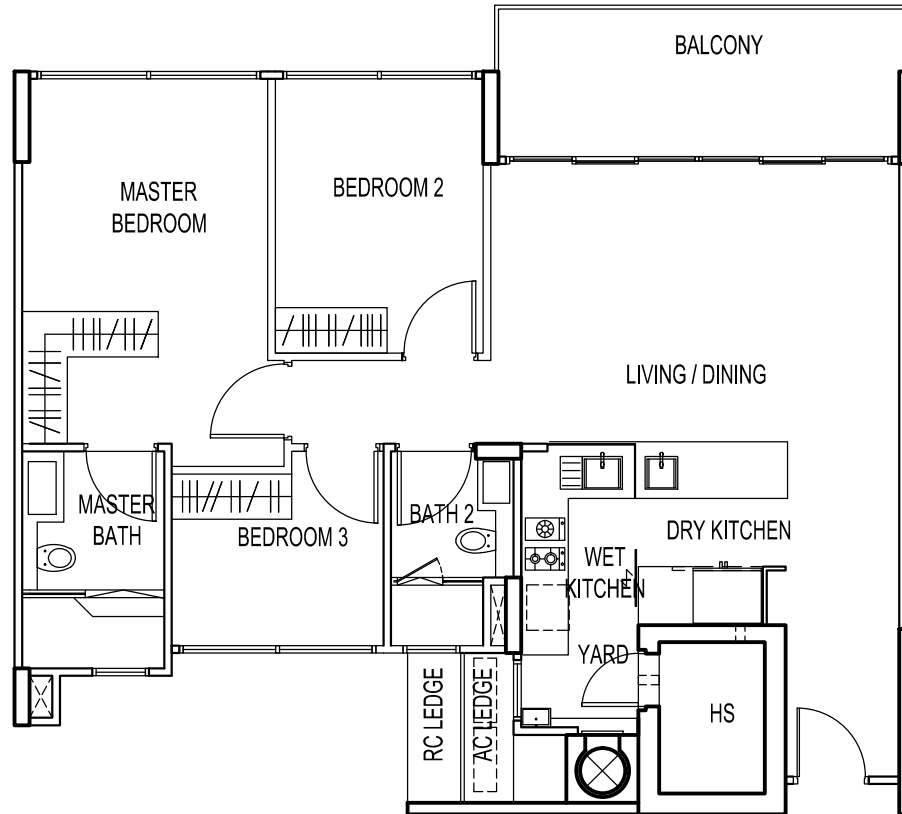
BP NO : A1136-00001-2008-BP01 DATED 24 OCT 2011

THE SEAWIND

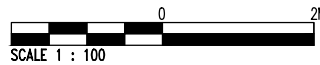
UNIT # 02-07
72 LORONG M TELOK KURAU

Type - C3(b)

BELOW PLAN IS SUBJECT TO CHANGE AS MAY BE APPROVED BY THE RELEVANT AUTHORITIES



KEY PLAN
NOT TO SCALE



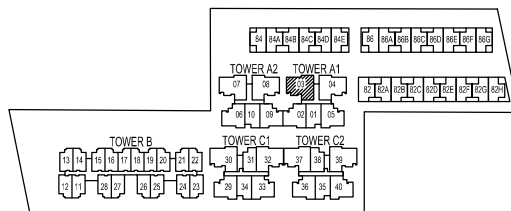
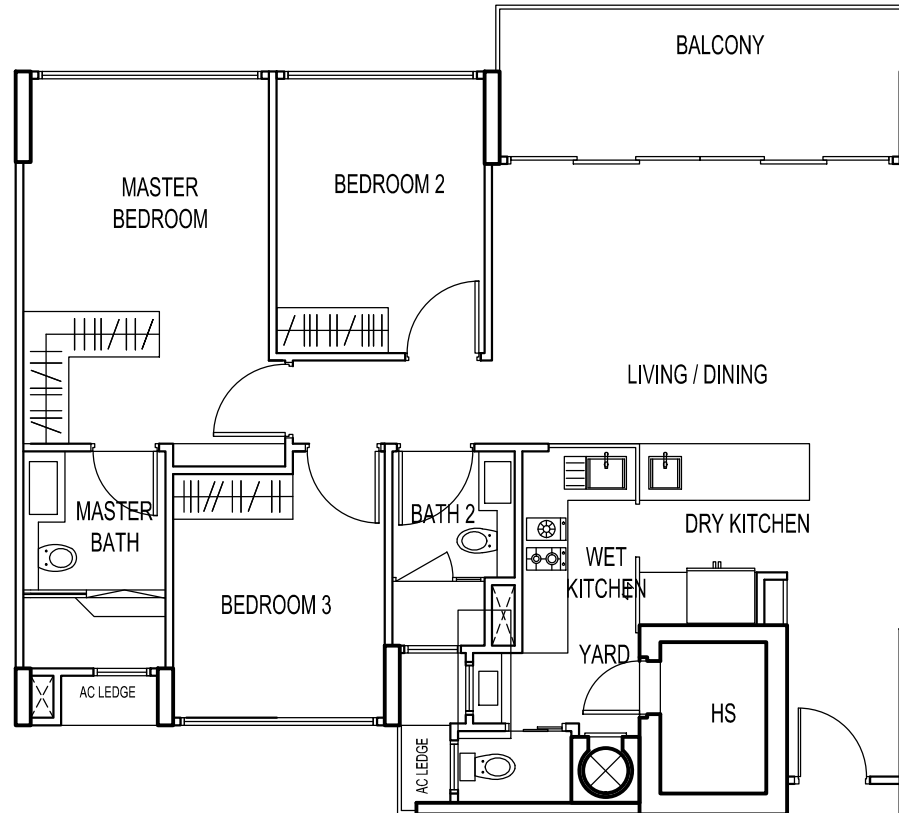
BP NO : A1136-00001-2008-BP01 DATED 24 OCT 2011

THE SEAWIND

UNIT # 02-03
70 LORONG M TELOK KURAU

Type - C1(b)

BELOW PLAN IS SUBJECT TO CHANGE AS MAY BE
APPROVED BY THE RELEVANT AUTHORITIES



 KEY PLAN
NOT TO SCALE



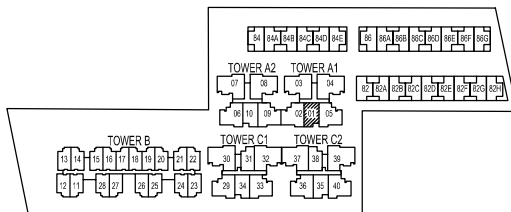
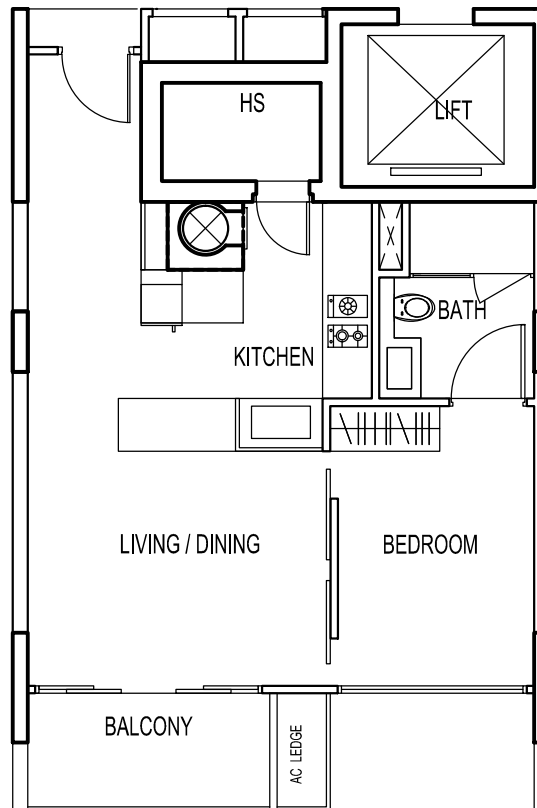
BP NO : A1136-00001-2008-BP01 DATED 24 OCT 2011

THE SEAWIND

UNIT # 02-01
70 LORONG M TELOK KURAU

Type - A2(b)

BELOW PLAN IS SUBJECT TO CHANGE AS MAY BE
APPROVED BY THE RELEVANT AUTHORITIES



KEY PLAN
NOT TO SCALE



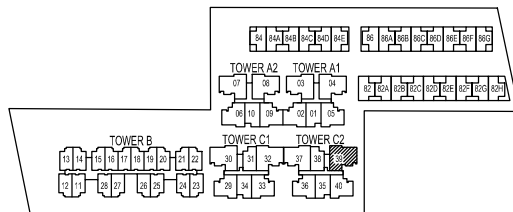
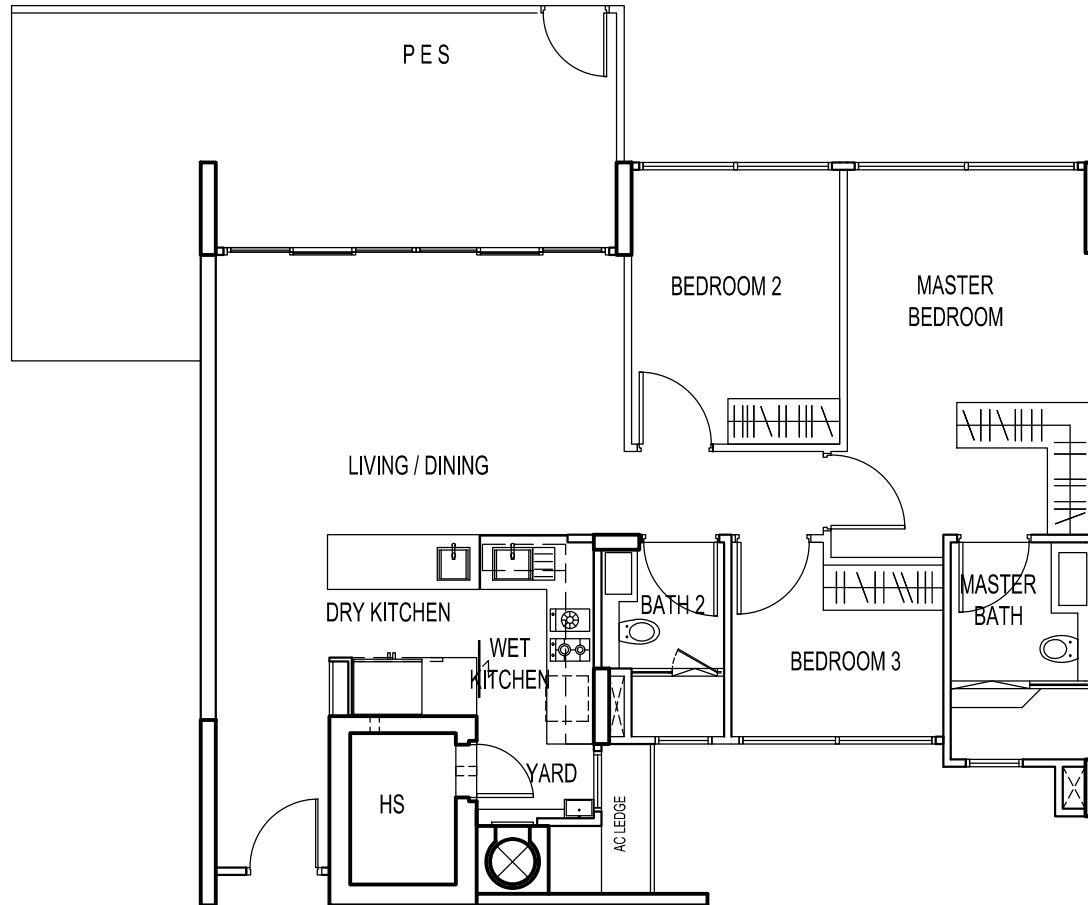
BP NO : A1136-00001-2008-BP01 DATED 24 OCT 2011

THE SEAWIND

UNIT # 01-39
80 LORONG M TELOK KURAU

Type - C3(p)

BELOW PLAN IS SUBJECT TO CHANGE AS MAY BE APPROVED BY THE RELEVANT AUTHORITIES



 KEY PLAN
NOT TO SCALE



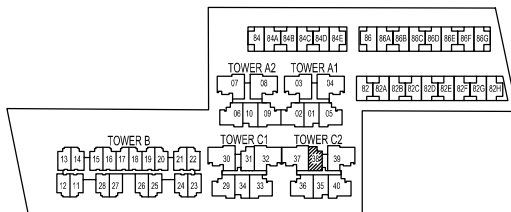
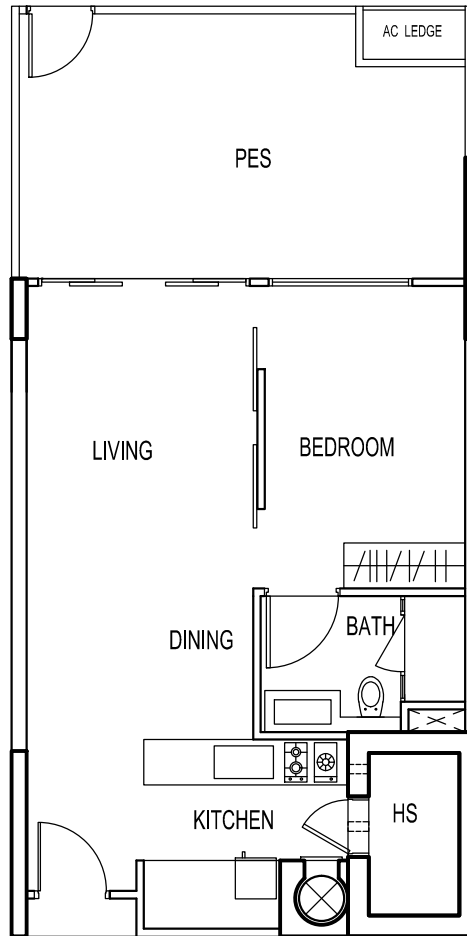
BP NO : A1136-00001-2008-BP01 DATED 24 OCT 2011

THE SEAWIND

UNIT # 01-38
80 LORONG M TELOK KURAU

Type - A1(p)

BELOW PLAN IS SUBJECT TO CHANGE AS MAY BE
APPROVED BY THE RELEVANT AUTHORITIES



KEY PLAN
NOT TO SCALE



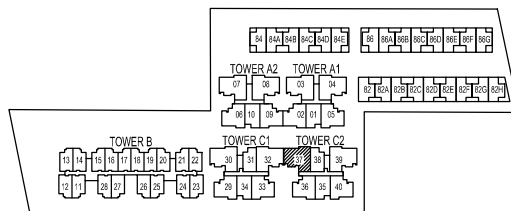
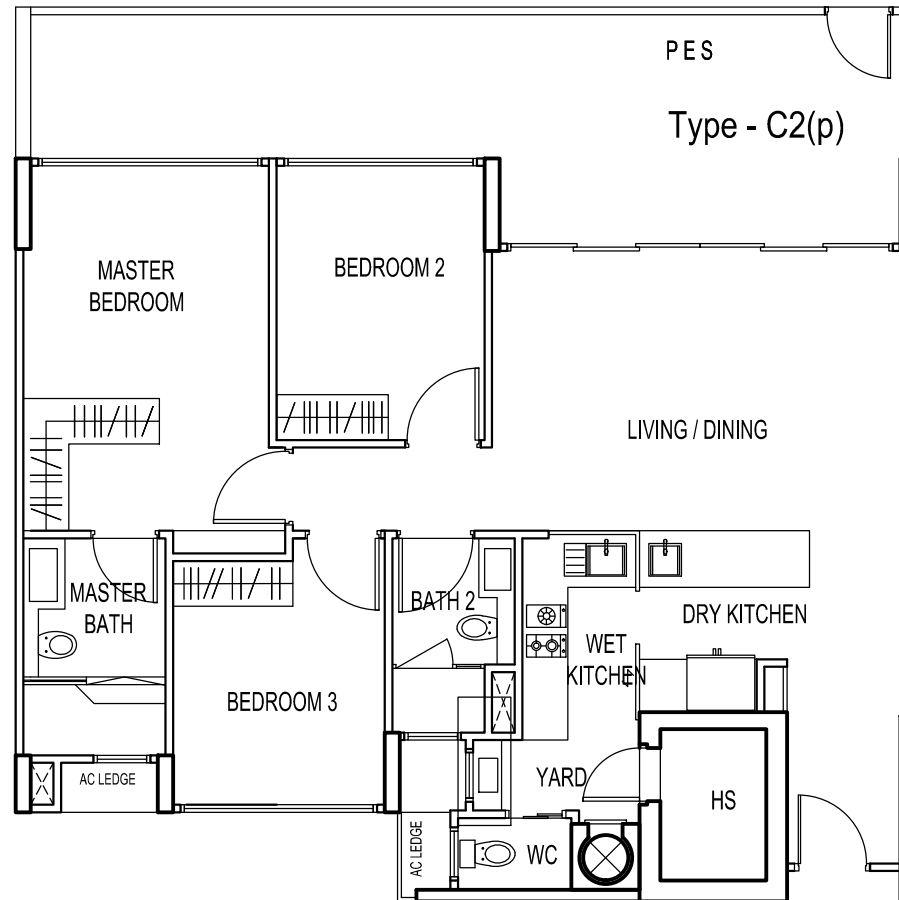
BP NO : A1136-00001-2008-BP01 DATED 24 OCT 2011

THE SEAWIND

UNIT # 01-37
80 LORONG M TELOK KURAU

Type - C2(p)

BELOW PLAN IS SUBJECT TO CHANGE AS MAY BE APPROVED BY THE RELEVANT AUTHORITIES



 KEY PLAN
NOT TO SCALE



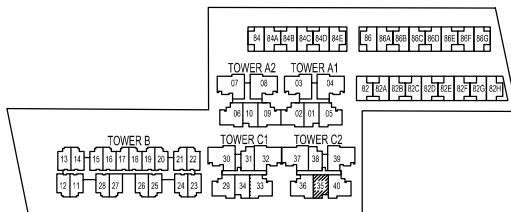
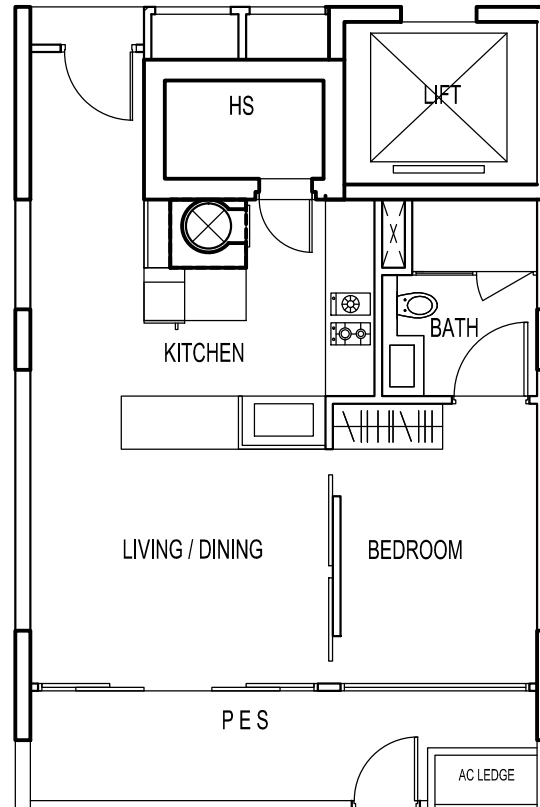
BP NO : A1136-00001-2008-BP01 DATED 24 OCT 2011

THE SEAWIND

UNIT # 01-35
80 LORONG M TELOK KURAU

Type - A2(p)

BELOW PLAN IS SUBJECT TO CHANGE AS MAY BE
APPROVED BY THE RELEVANT AUTHORITIES



KEY PLAN
NOT TO SCALE



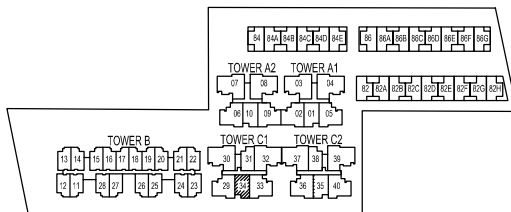
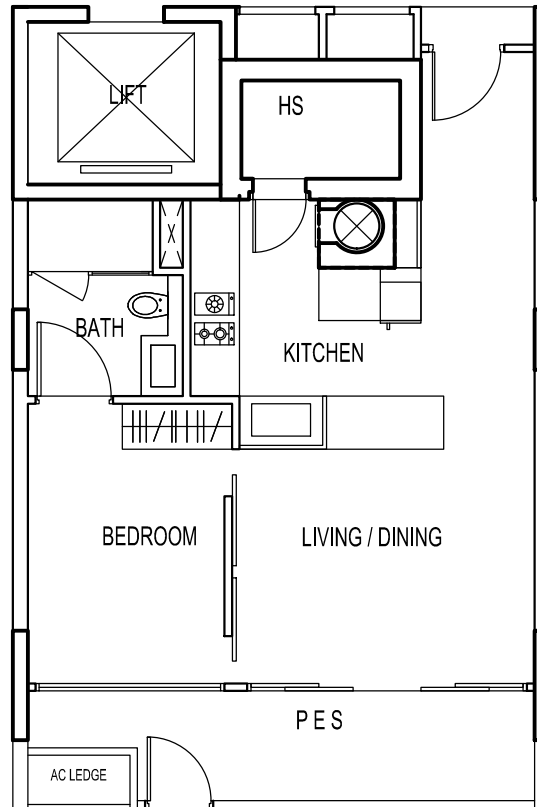
BP NO : A1136-00001-2008-BP01 DATED 24 OCT 2011

THE SEAWIND

UNIT # 01-34
78 LORONG M TELOK KURAU

Type - A2(p)

BELOW PLAN IS SUBJECT TO CHANGE AS MAY BE APPROVED BY THE RELEVANT AUTHORITIES



KEY PLAN
NOT TO SCALE



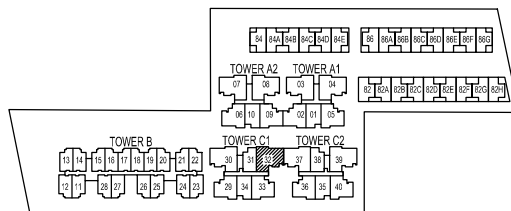
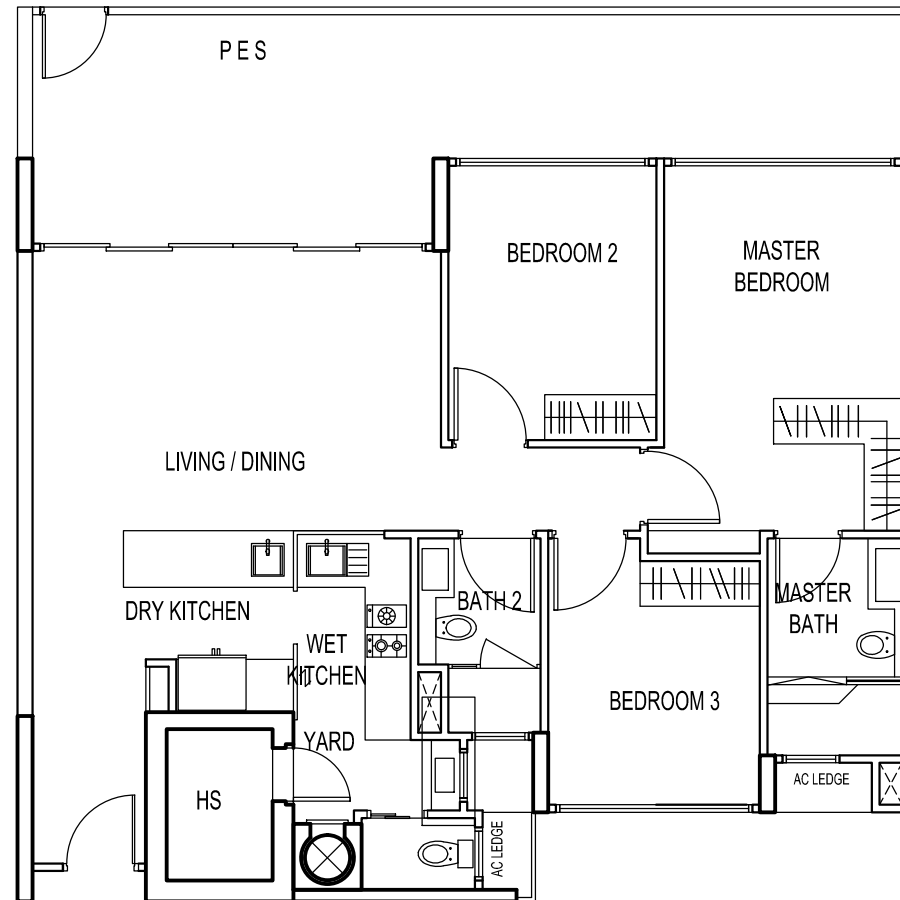
BP NO : A1136-00001-2008-BP01 DATED 24 OCT 2011

THE SEAWIND

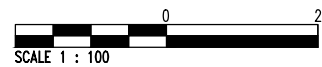
UNIT # 01-32
78 LORONG M TELOK KURAU

Type - C2(p)

BELOW PLAN IS SUBJECT TO CHANGE AS MAY BE
APPROVED BY THE RELEVANT AUTHORITIES



 KEY PLAN
NOT TO SCALE



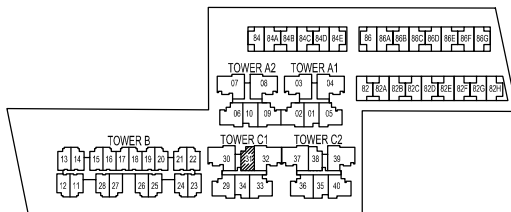
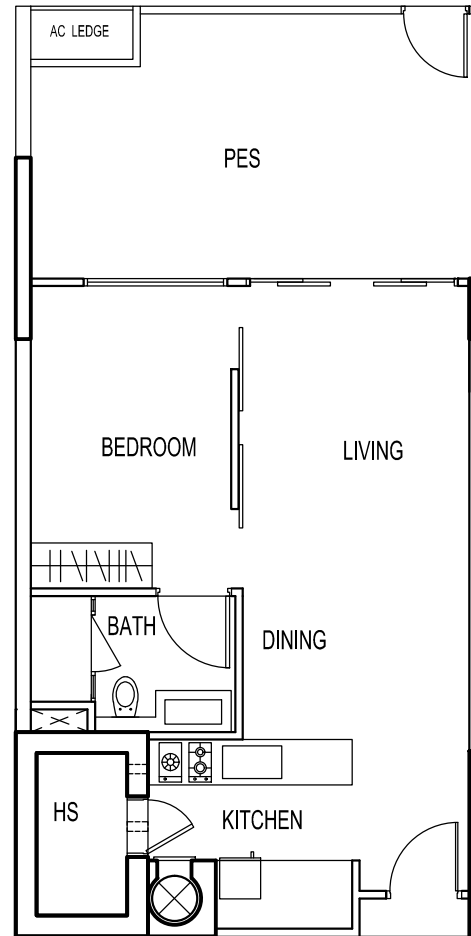
BP NO : A1136-00001-2008-BP01 DATED 24 OCT 2011

THE SEAWIND

UNIT # 01-31
78 LORONG M TELOK KURAU

Type - A1(p)

BELOW PLAN IS SUBJECT TO CHANGE AS MAY BE
APPROVED BY THE RELEVANT AUTHORITIES



KEY PLAN
NOT TO SCALE



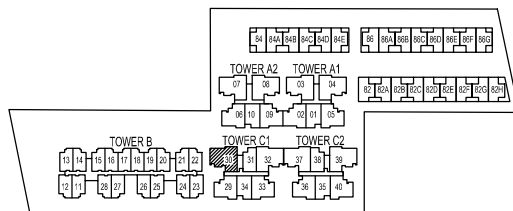
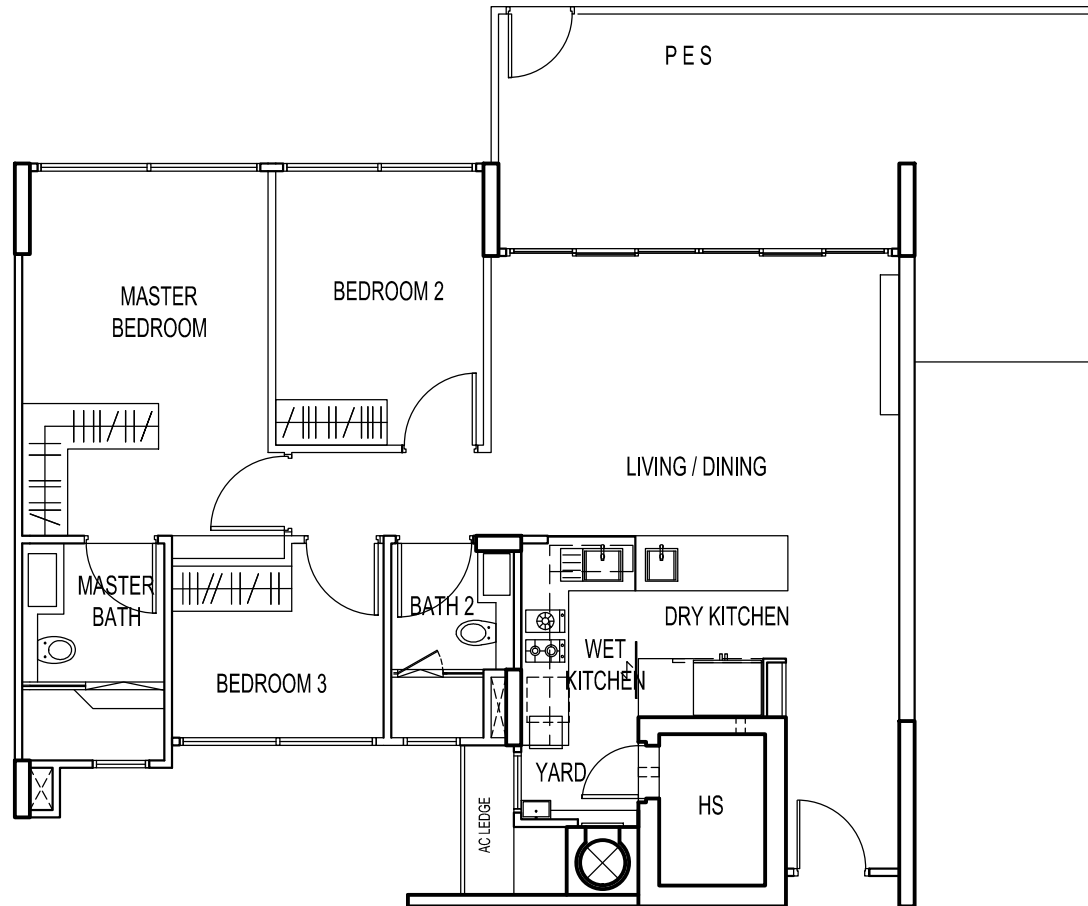
BP NO : A1136-00001-2008-BP01 DATED 24 OCT 2011


THE SEAWIND

UNIT # 01-30
78 LORONG M TELOK KURAU

Type - C3(p)

BELOW PLAN IS SUBJECT TO CHANGE AS MAY BE
APPROVED BY THE RELEVANT AUTHORITIES



 KEY PLAN
NOT TO SCALE



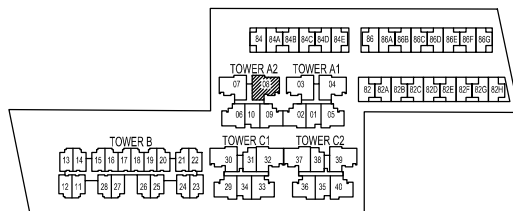
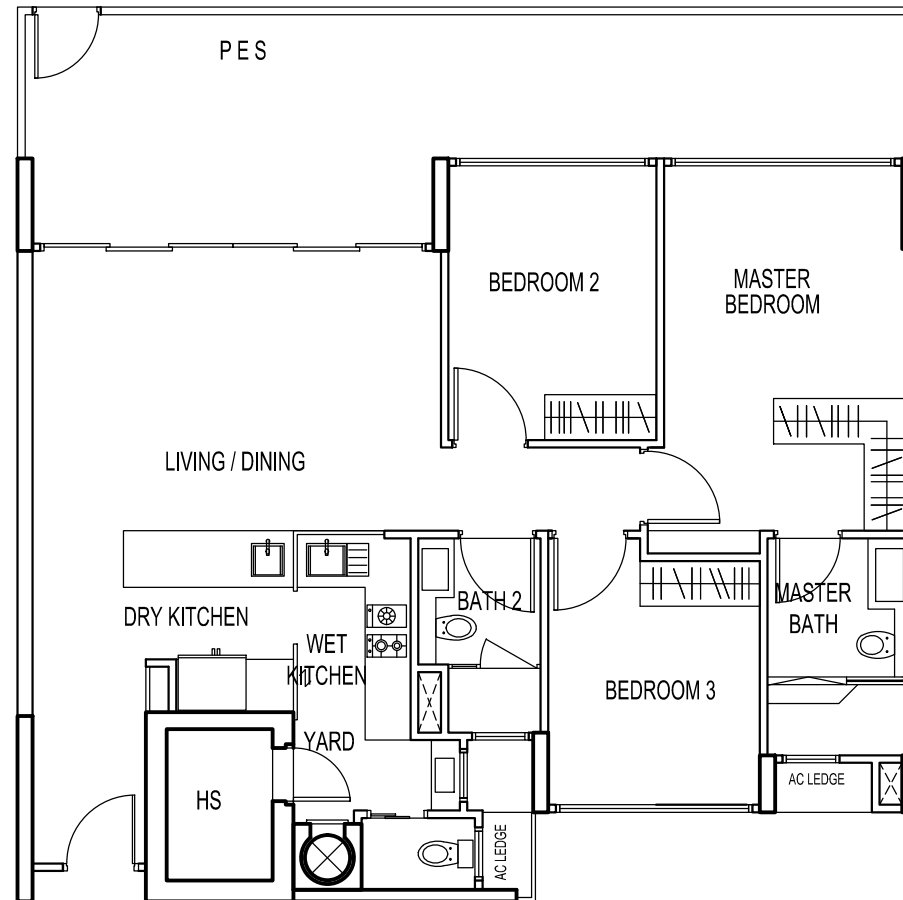
BP NO : A1136-00001-2008-BP01 DATED 24 OCT 2011

THE SEAWIND

UNIT # 01-08
78 LORONG M TELOK KURAU

Type - C1(p)

BELOW PLAN IS SUBJECT TO CHANGE AS MAY BE
APPROVED BY THE RELEVANT AUTHORITIES



KEY PLAN
NOT TO SCALE



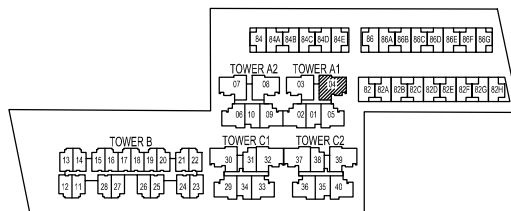
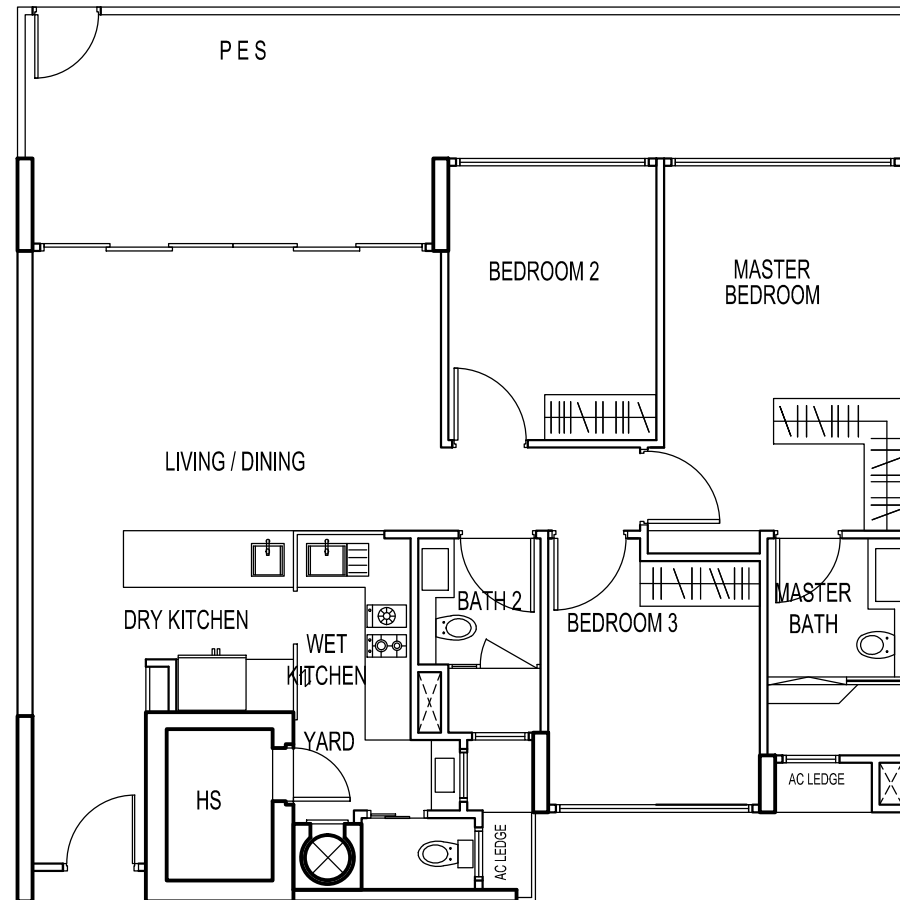
BP NO : A1136-00001-2008-BP01 DATED 24 OCT 2011

THE SEAWIND

UNIT # 01-04
78 LORONG M TELOK KURAU

Type - C1(p)

BELOW PLAN IS SUBJECT TO CHANGE AS MAY BE APPROVED BY THE RELEVANT AUTHORITIES



 KEY PLAN
NOT TO SCALE



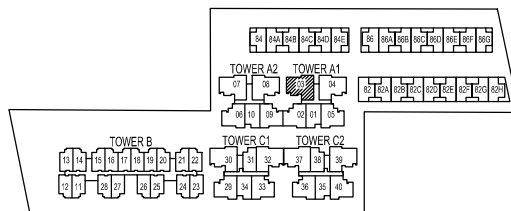
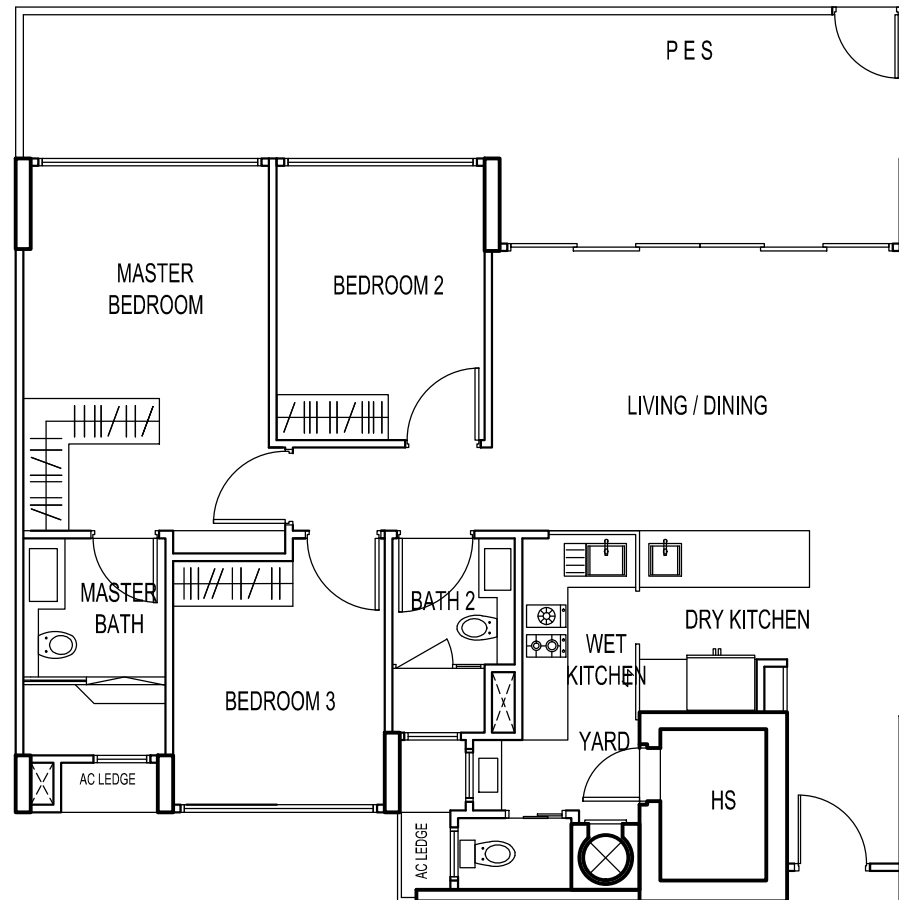
BP NO : A1136-00001-2008-BP01 DATED 24 OCT 2011

THE SEAWIND

UNIT # 01-03
80 LORONG M TELOK KURAU

Type - C1(p)

BELOW PLAN IS SUBJECT TO CHANGE AS MAY BE APPROVED BY THE RELEVANT AUTHORITIES



 KEY PLAN
NOT TO SCALE



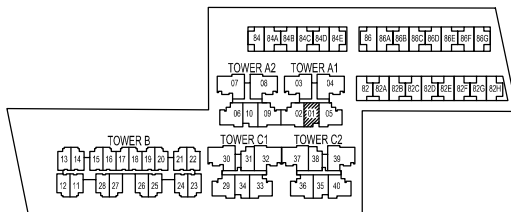
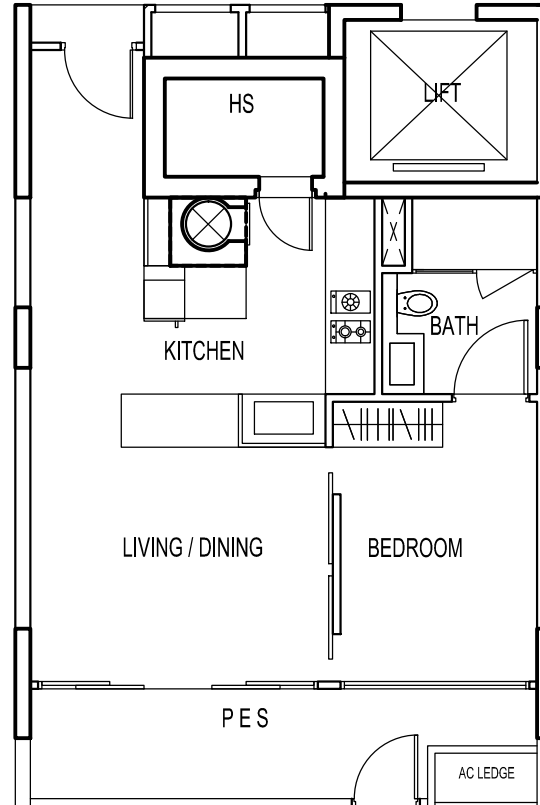
BP NO : A1136-00001-2008-BP01 DATED 24 OCT 2011

THE SEAWIND

UNIT # 01-01
70 LORONG M TELOK KURAU

Type - A2(p)

BELOW PLAN IS SUBJECT TO CHANGE AS MAY BE
APPROVED BY THE RELEVANT AUTHORITIES



KEY PLAN
NOT TO SCALE



BP NO : A1136-00001-2008-BP01 DATED 24 OCT 2011