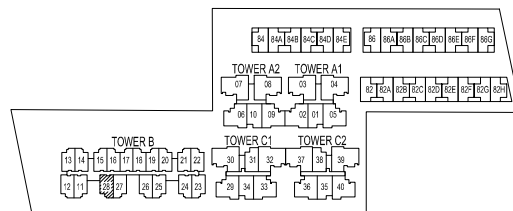
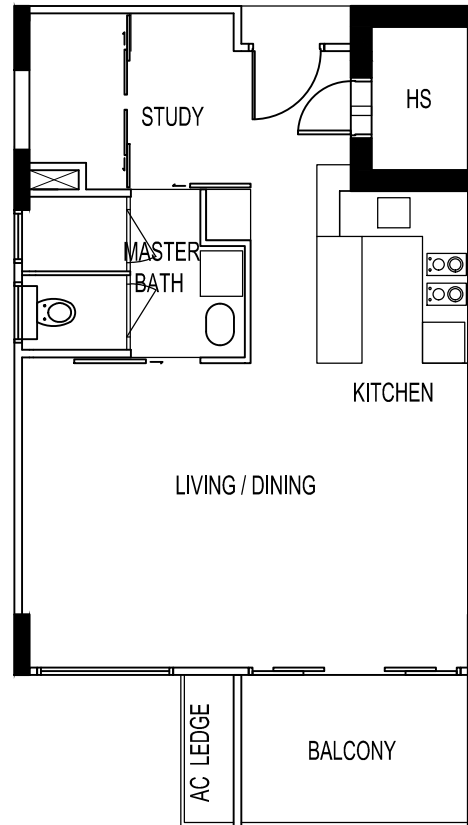


THE SEAWIND

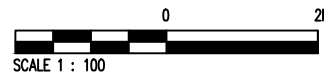
UNIT # 05-28
80 LORONG M TELOK KURAU

Type - SA3(b)

BELOW PLAN IS SUBJECT TO CHANGE AS MAY BE
APPROVED BY THE RELEVANT AUTHORITIES



KEY PLAN
NOT TO SCALE

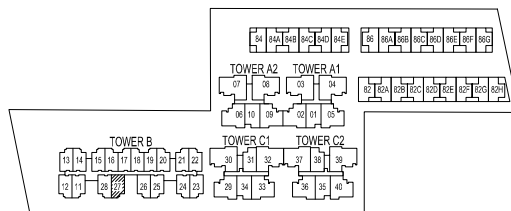
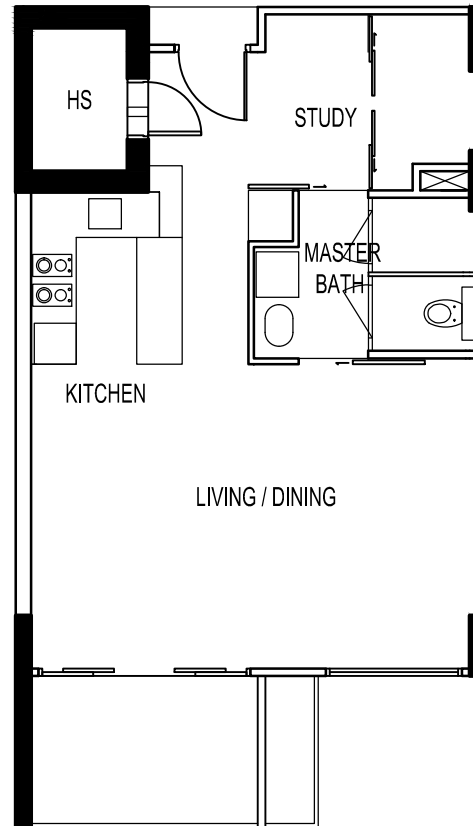


THE SEAWIND

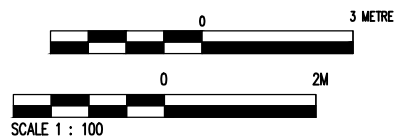
UNIT # 05-27
80 LORONG M TELOK KURAU

Type - SA4(b)

BELOW PLAN IS SUBJECT TO CHANGE AS MAY BE
APPROVED BY THE RELEVANT AUTHORITIES



KEY PLAN
NOT TO SCALE

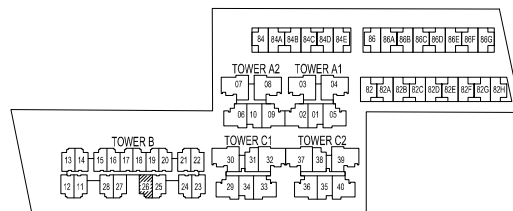
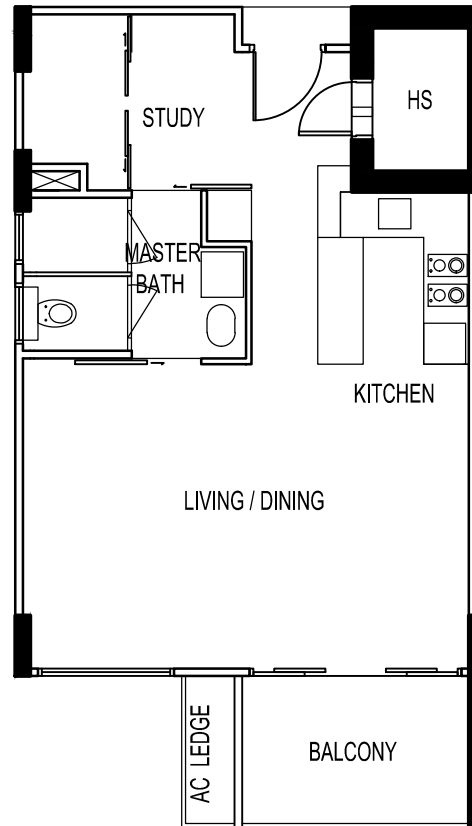


THE SEAWIND

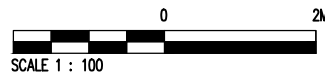
UNIT # 05-26
80 LORONG M TELOK KURAU

Type - SA4(b)

BELOW PLAN IS SUBJECT TO CHANGE AS MAY BE
APPROVED BY THE RELEVANT AUTHORITIES



KEY PLAN
NOT TO SCALE

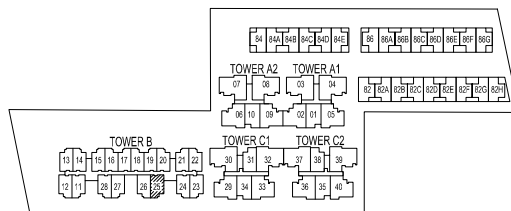
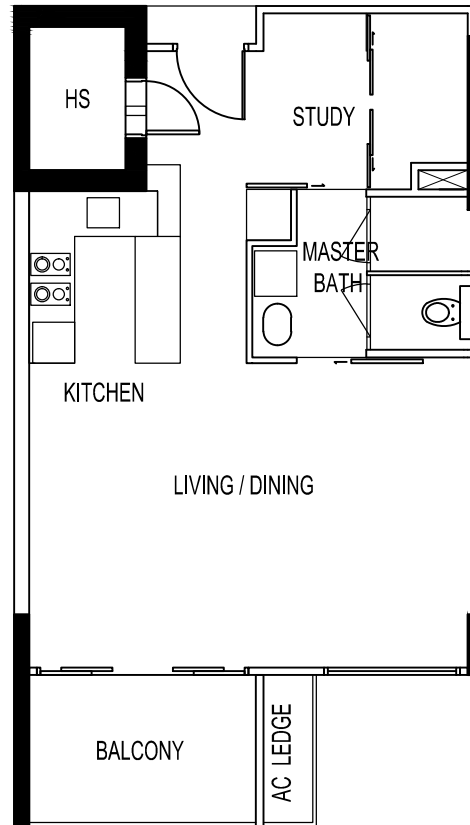


THE SEAWIND

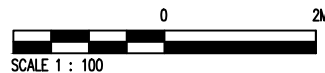
UNIT # 05-25
80 LORONG M TELOK KURAU

Type - SA3(b)

BELOW PLAN IS SUBJECT TO CHANGE AS MAY BE
APPROVED BY THE RELEVANT AUTHORITIES



KEY PLAN
NOT TO SCALE

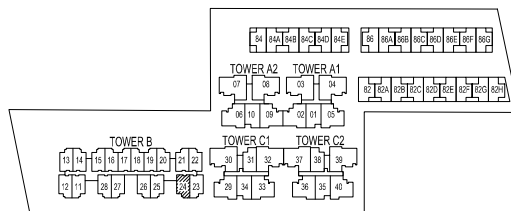
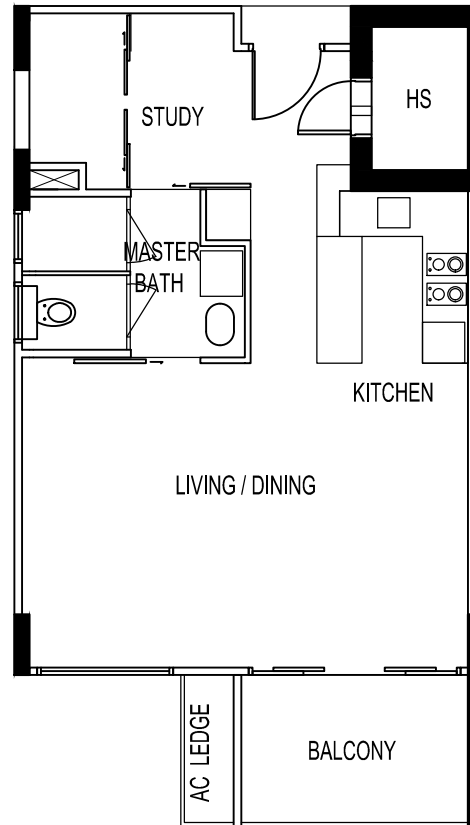


THE SEAWIND

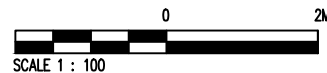
UNIT # 05-24
80 LORONG M TELOK KURAU

Type - SA3(b)

BELOW PLAN IS SUBJECT TO CHANGE AS MAY BE
APPROVED BY THE RELEVANT AUTHORITIES



KEY PLAN
NOT TO SCALE

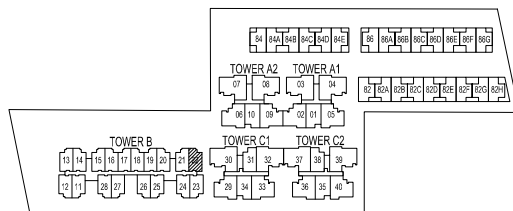
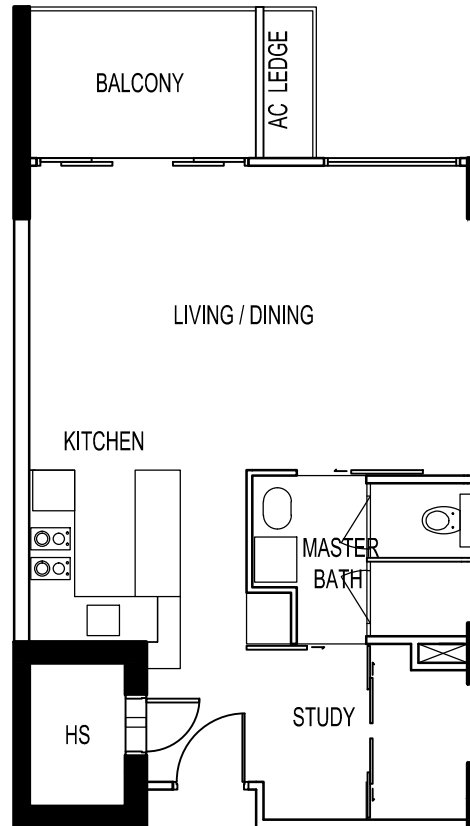


THE SEAWIND

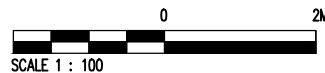
UNIT # 05-22
80 LORONG M TELOK KURAU

Type - SA4(b)

BELOW PLAN IS SUBJECT TO CHANGE AS MAY BE
APPROVED BY THE RELEVANT AUTHORITIES



KEY PLAN
NOT TO SCALE

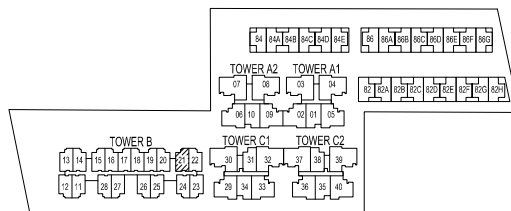
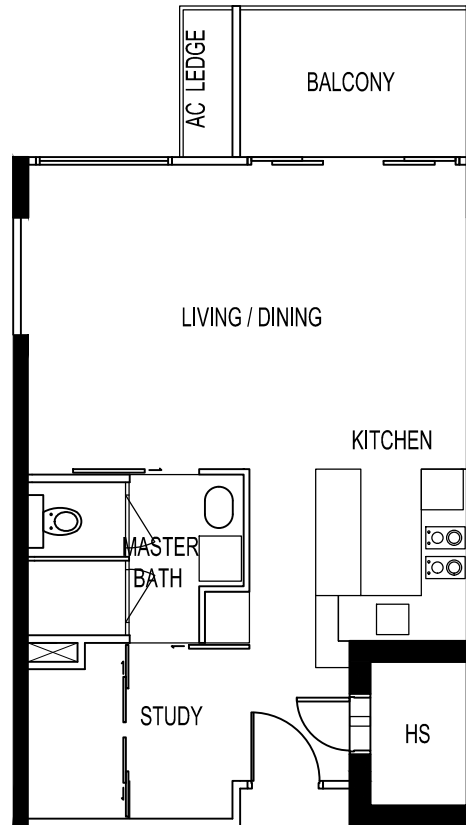


THE SEAWIND

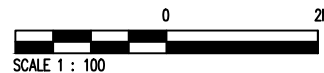
UNIT # 05-21
80 LORONG M TELOK KURAU

Type - SA2(b)

BELOW PLAN IS SUBJECT TO CHANGE AS MAY BE
APPROVED BY THE RELEVANT AUTHORITIES



KEY PLAN
NOT TO SCALE

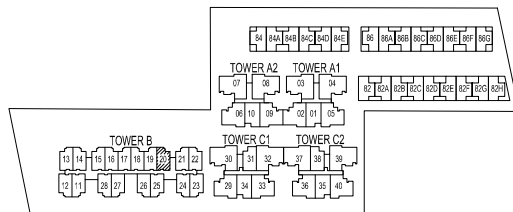
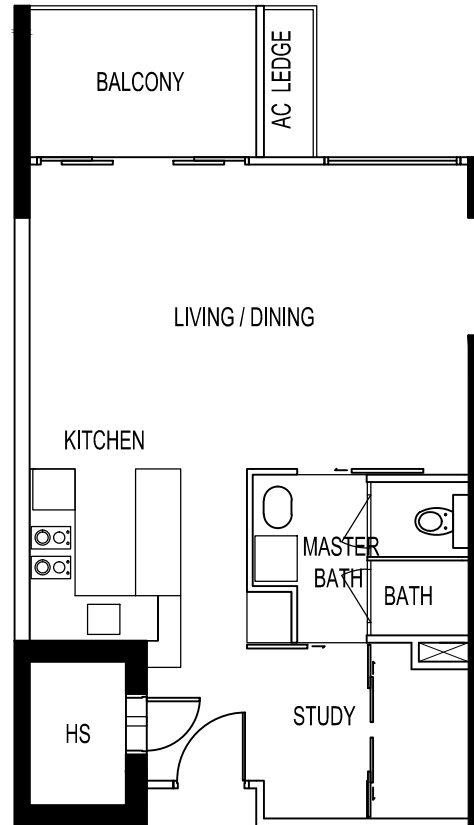


THE SEAWIND

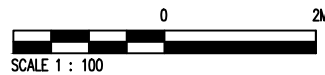
UNIT # 05-20
80 LORONG M TELOK KURAU

Type - SA2(b)

BELOW PLAN IS SUBJECT TO CHANGE AS MAY BE
APPROVED BY THE RELEVANT AUTHORITIES



KEY PLAN
NOT TO SCALE

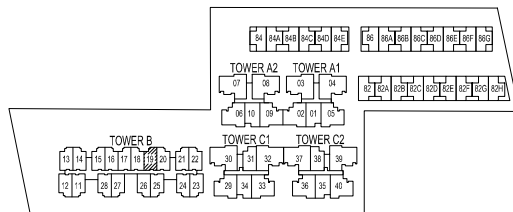
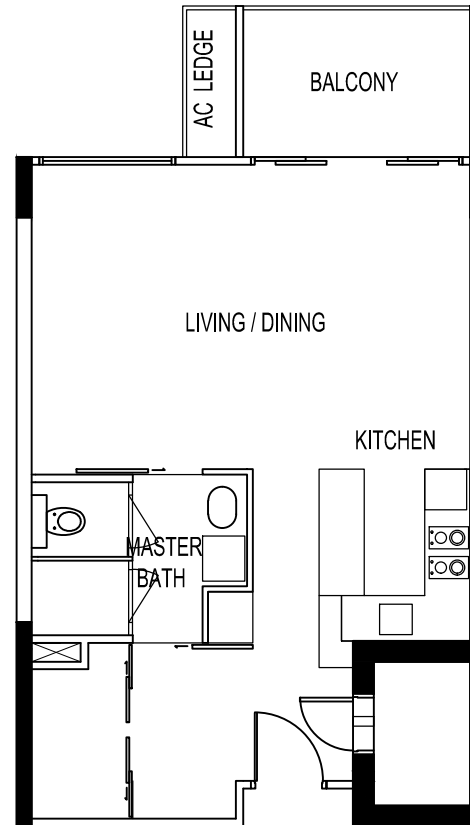


THE SEAWIND

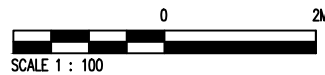
UNIT # 05-19
80 LORONG M TELOK KURAU

Type - SA1(b)

BELOW PLAN IS SUBJECT TO CHANGE AS MAY BE
APPROVED BY THE RELEVANT AUTHORITIES



KEY PLAN
NOT TO SCALE

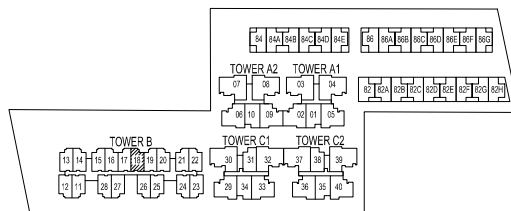
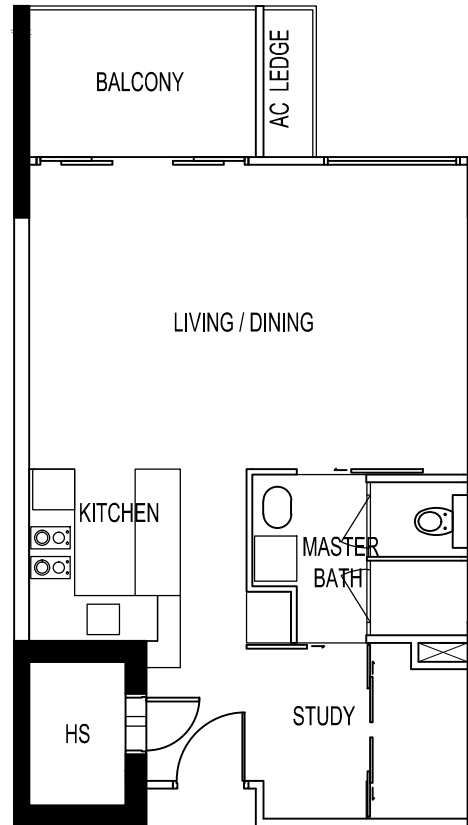


THE SEAWIND

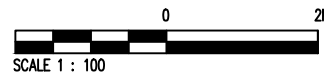
UNIT # 05-18
80 LORONG M TELOK KURAU

Type - SA1(b)

BELOW PLAN IS SUBJECT TO CHANGE AS MAY BE
APPROVED BY THE RELEVANT AUTHORITIES



KEY PLAN
NOT TO SCALE

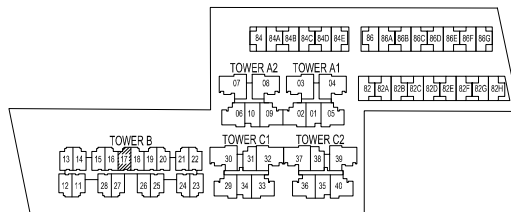
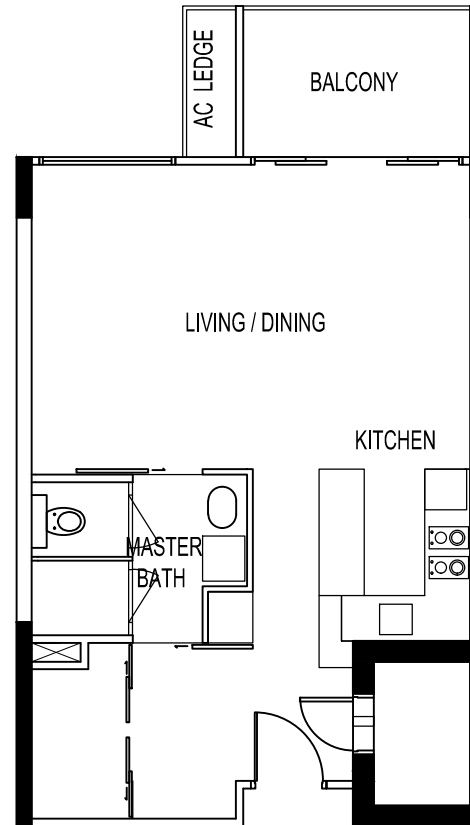


THE SEAWIND

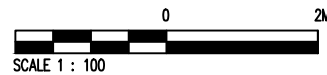
UNIT # 05-17
80 LORONG M TELOK KURAU

Type - SA1(b)

BELOW PLAN IS SUBJECT TO CHANGE AS MAY BE
APPROVED BY THE RELEVANT AUTHORITIES



KEY PLAN
NOT TO SCALE

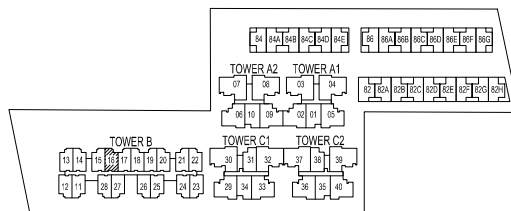
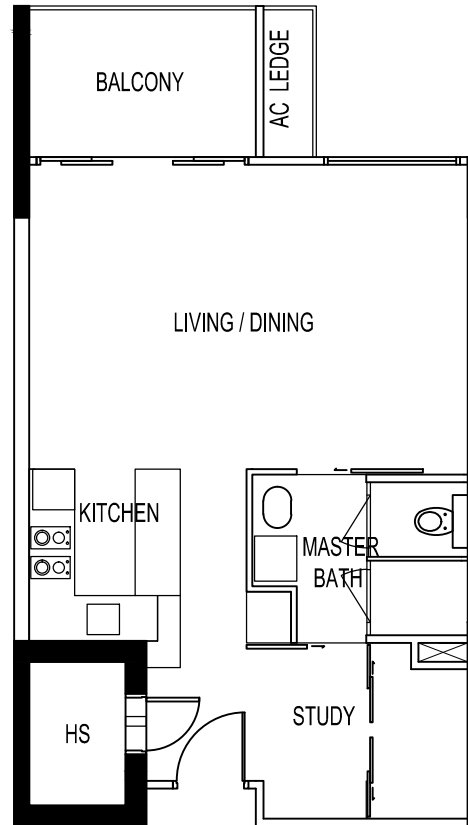


THE SEAWIND

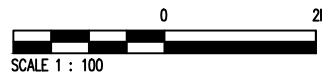
UNIT # 05-16
80 LORONG M TELOK KURAU

Type - SA1(b)

BELOW PLAN IS SUBJECT TO CHANGE AS MAY BE
APPROVED BY THE RELEVANT AUTHORITIES



KEY PLAN
NOT TO SCALE

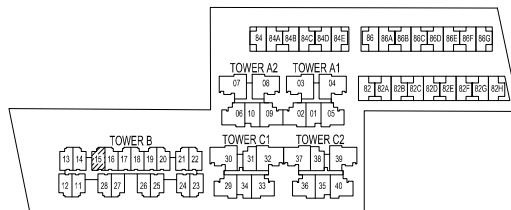
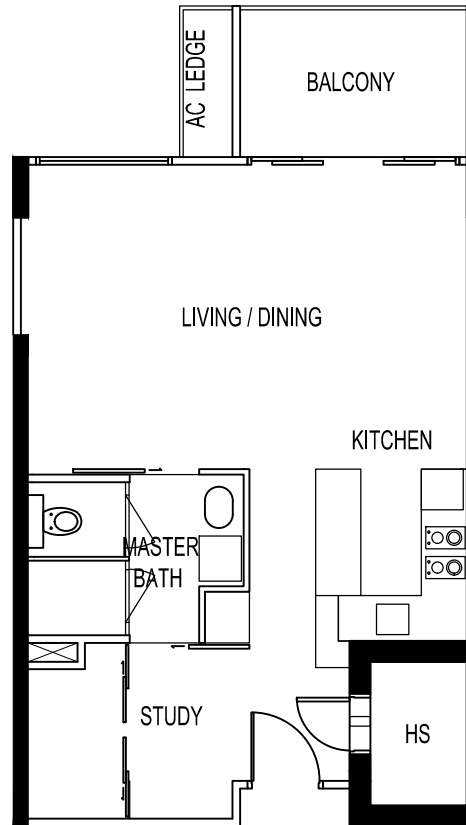


THE SEAWIND

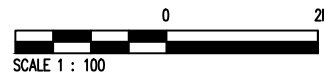
UNIT # 05-15
80 LORONG M TELOK KURAU

Type - SA2(b)

BELOW PLAN IS SUBJECT TO CHANGE AS MAY BE
APPROVED BY THE RELEVANT AUTHORITIES



KEY PLAN
NOT TO SCALE

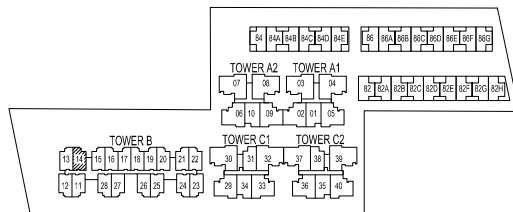
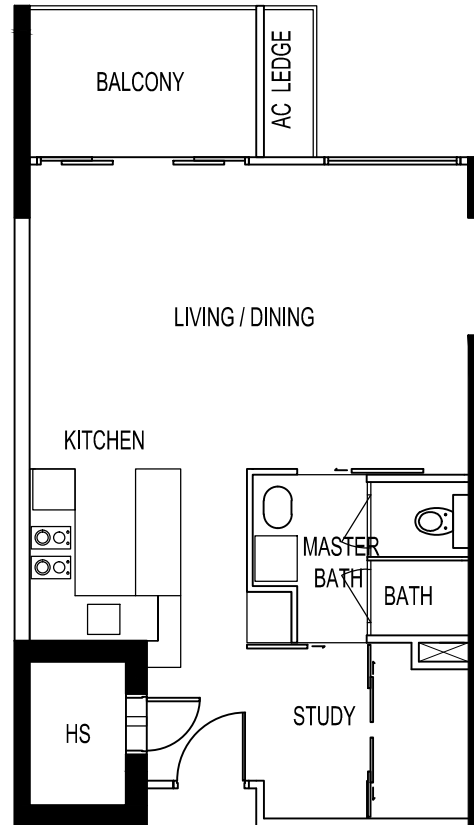


THE SEAWIND

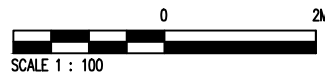
UNIT # 05-14
80 LORONG M TELOK KURAU

Type - SA2(b)

BELOW PLAN IS SUBJECT TO CHANGE AS MAY BE
APPROVED BY THE RELEVANT AUTHORITIES



KEY PLAN
NOT TO SCALE

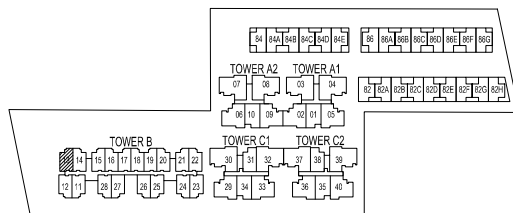
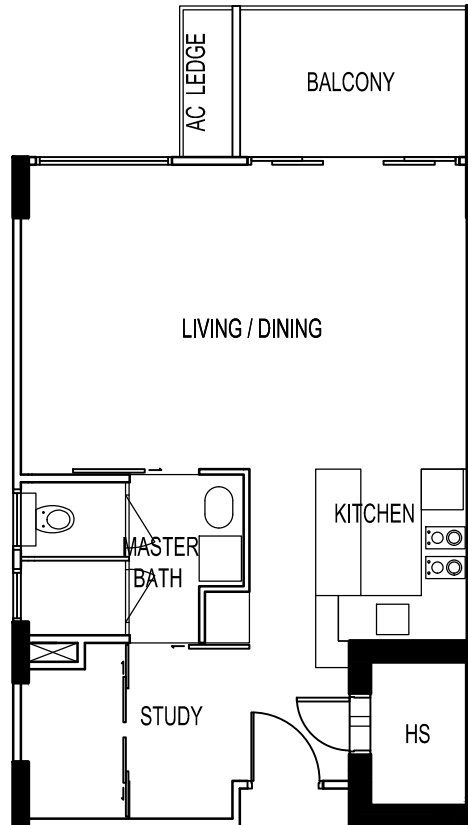


THE SEAWIND

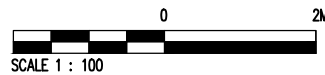
UNIT # 05-13
80 LORONG M TELOK KURAU

Type - SA4(b)

BELOW PLAN IS SUBJECT TO CHANGE AS MAY BE
APPROVED BY THE RELEVANT AUTHORITIES



KEY PLAN
NOT TO SCALE

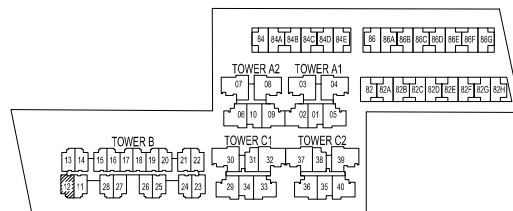
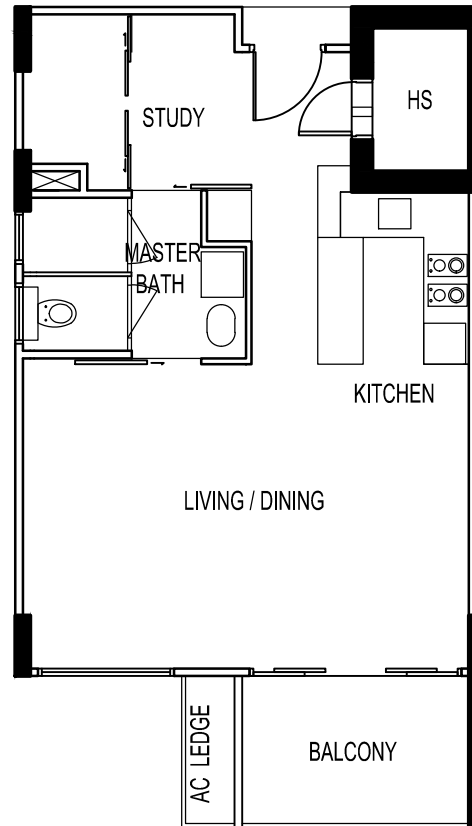


THE SEAWIND

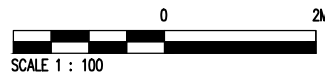
UNIT # 05-12
80 LORONG M TELOK KURAU

Type - SA4(b)

BELOW PLAN IS SUBJECT TO CHANGE AS MAY BE
APPROVED BY THE RELEVANT AUTHORITIES



KEY PLAN
NOT TO SCALE

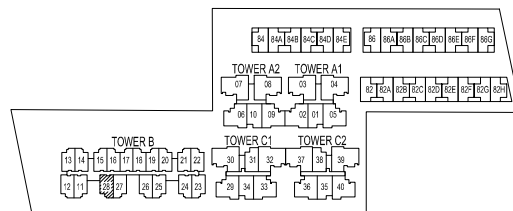
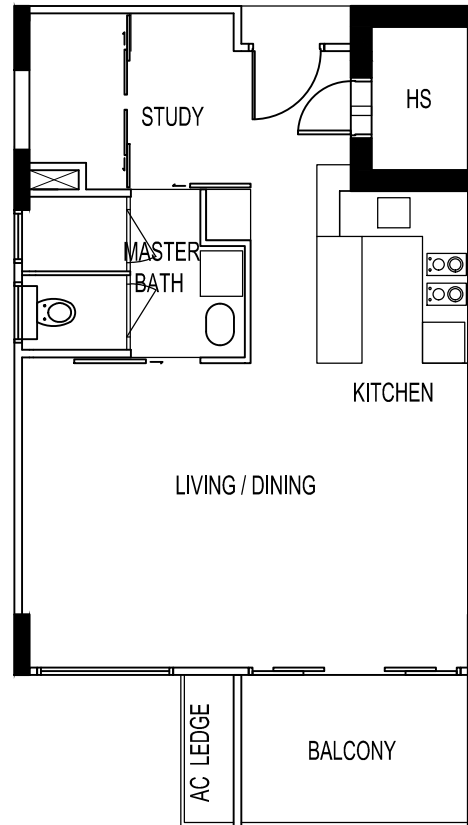


THE SEAWIND

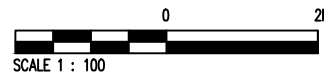
UNIT # 04-28
80 LORONG M TELOK KURAU

Type - SA3(b)

BELOW PLAN IS SUBJECT TO CHANGE AS MAY BE
APPROVED BY THE RELEVANT AUTHORITIES



KEY PLAN
NOT TO SCALE

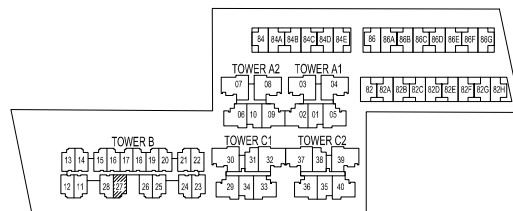
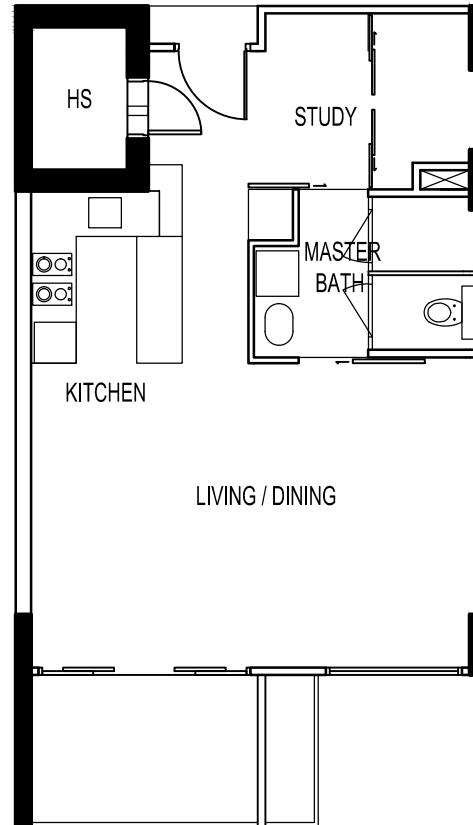


THE SEAWIND

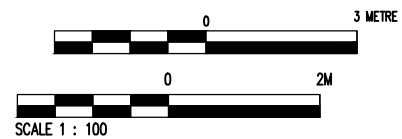
UNIT # 04-27
80 LORONG M TELOK KURAU

Type - SA4(b)

BELOW PLAN IS SUBJECT TO CHANGE AS MAY BE
APPROVED BY THE RELEVANT AUTHORITIES



KEY PLAN
NOT TO SCALE

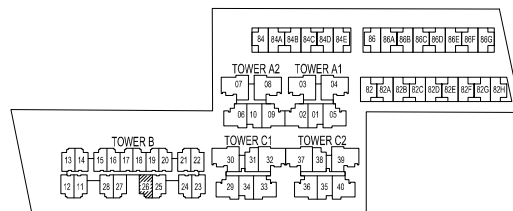
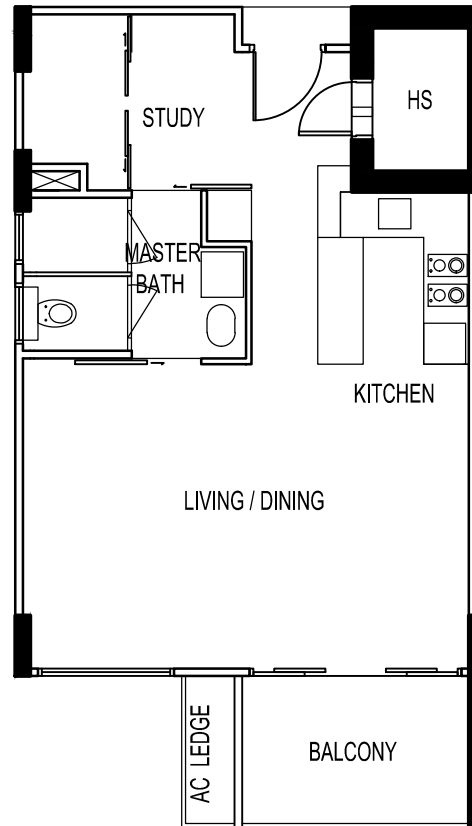


THE SEAWIND

UNIT # 04-26
80 LORONG M TELOK KURAU

Type - SA4(b)

BELOW PLAN IS SUBJECT TO CHANGE AS MAY BE
APPROVED BY THE RELEVANT AUTHORITIES



KEY PLAN
NOT TO SCALE

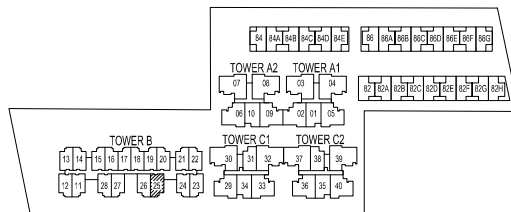
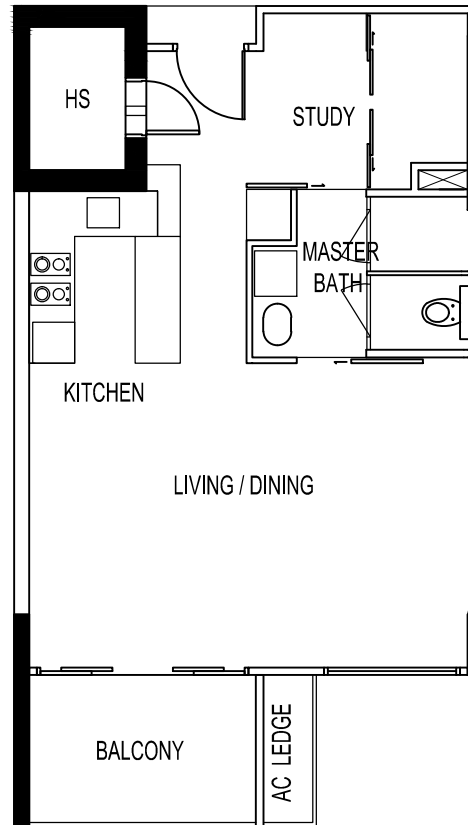


THE SEAWIND

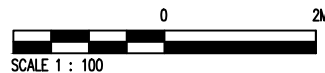
UNIT # 04-25
80 LORONG M TELOK KURAU

Type - SA3(b)

BELOW PLAN IS SUBJECT TO CHANGE AS MAY BE
APPROVED BY THE RELEVANT AUTHORITIES



KEY PLAN
NOT TO SCALE

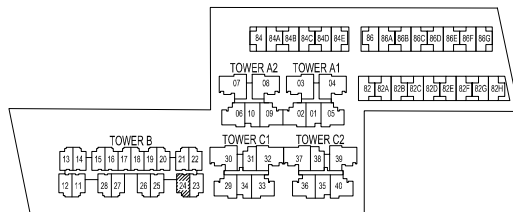
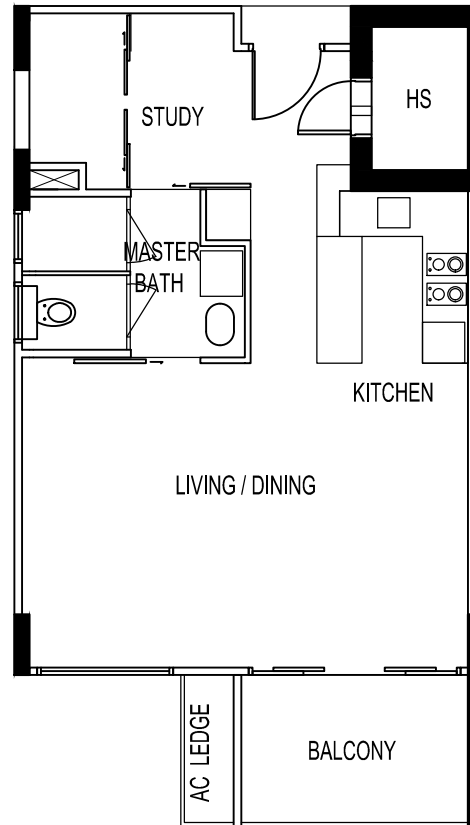


THE SEAWIND

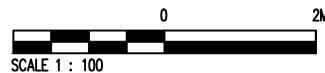
UNIT # 04-24
80 LORONG M TELOK KURAU

Type - SA3(b)

BELOW PLAN IS SUBJECT TO CHANGE AS MAY BE
APPROVED BY THE RELEVANT AUTHORITIES



KEY PLAN
NOT TO SCALE

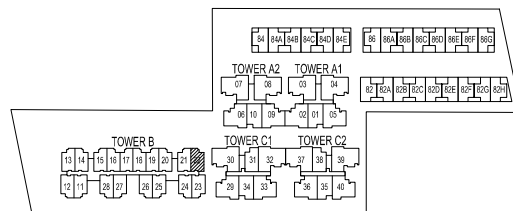
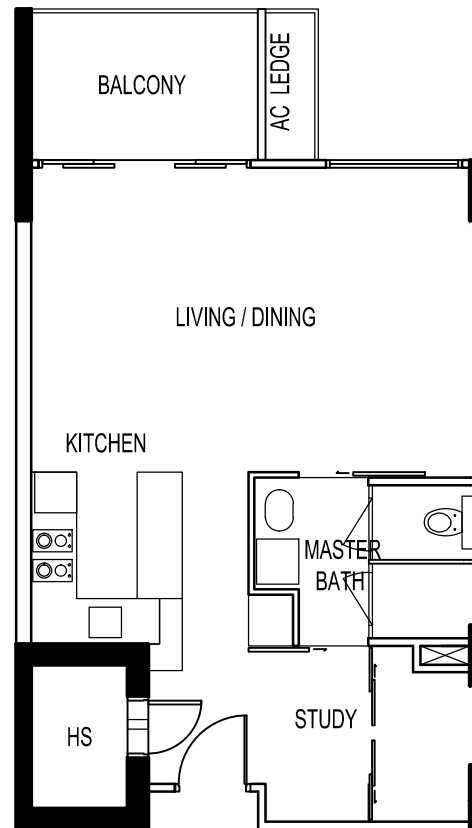


THE SEAWIND

UNIT # 04-22
80 LORONG M TELOK KURAU

Type - SA4(b)

BELOW PLAN IS SUBJECT TO CHANGE AS MAY BE
APPROVED BY THE RELEVANT AUTHORITIES



KEY PLAN
NOT TO SCALE

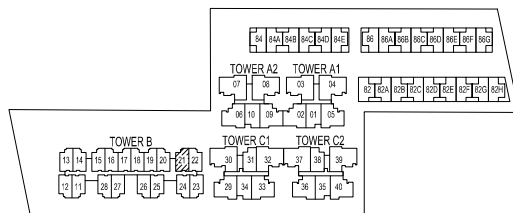
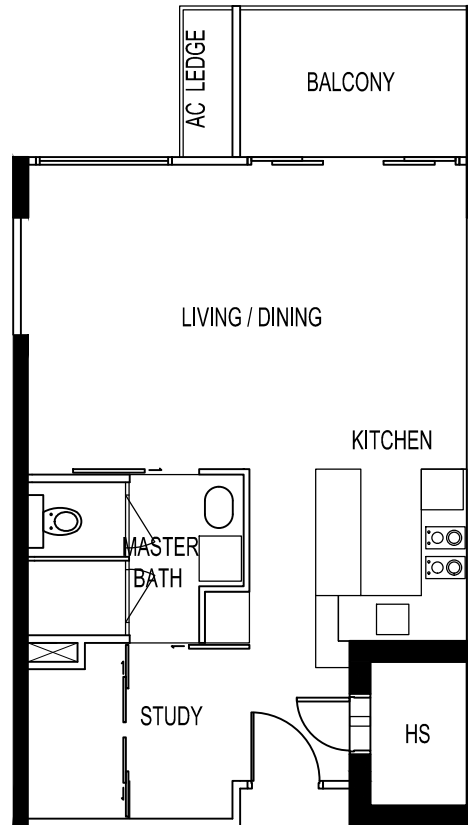


THE SEAWIND

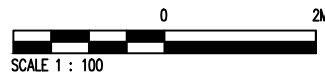
UNIT # 04-21
80 LORONG M TELOK KURAU

Type - SA2(b)

BELOW PLAN IS SUBJECT TO CHANGE AS MAY BE
APPROVED BY THE RELEVANT AUTHORITIES



KEY PLAN
NOT TO SCALE

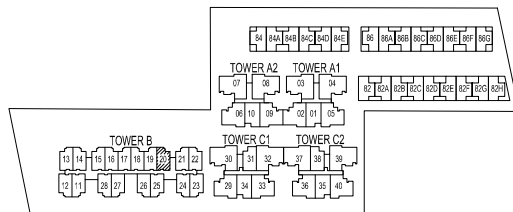
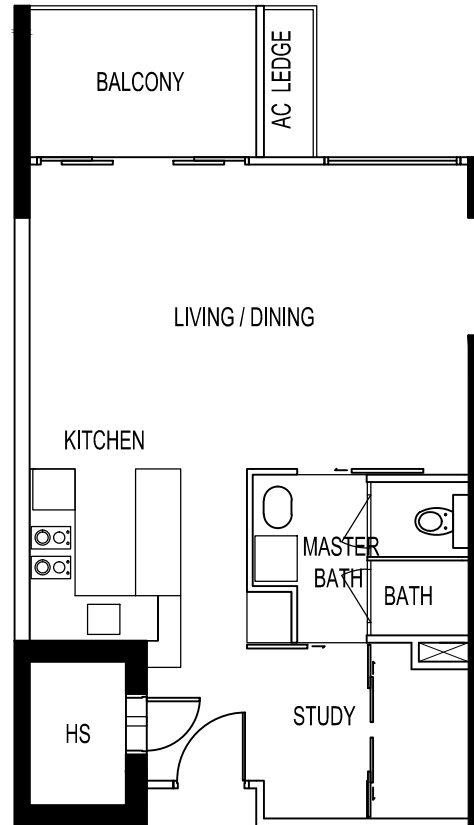


THE SEAWIND

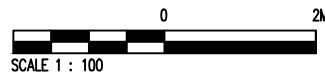
UNIT # 04-20
80 LORONG M TELOK KURAU

Type - SA2(b)

BELOW PLAN IS SUBJECT TO CHANGE AS MAY BE
APPROVED BY THE RELEVANT AUTHORITIES



KEY PLAN
NOT TO SCALE

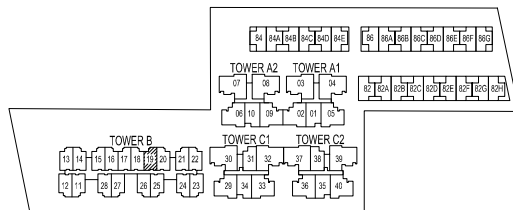
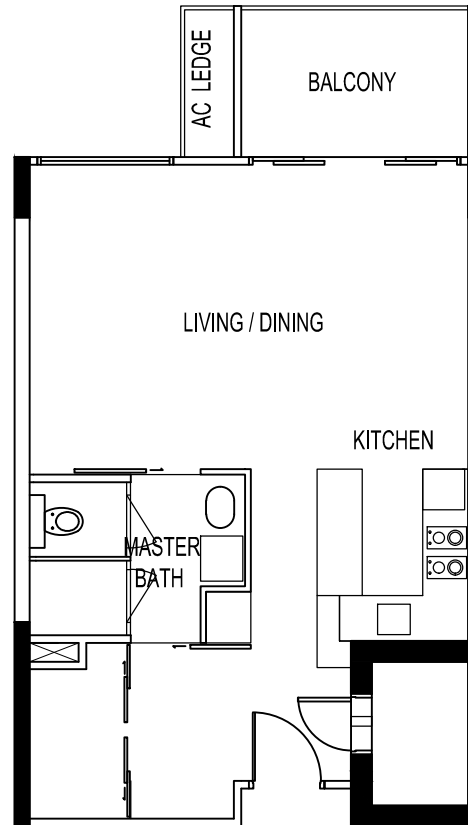


THE SEAWIND

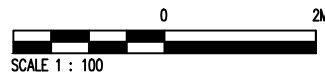
UNIT # 04-19
80 LORONG M TELOK KURAU

Type - SA1(b)

BELOW PLAN IS SUBJECT TO CHANGE AS MAY BE
APPROVED BY THE RELEVANT AUTHORITIES



KEY PLAN
NOT TO SCALE

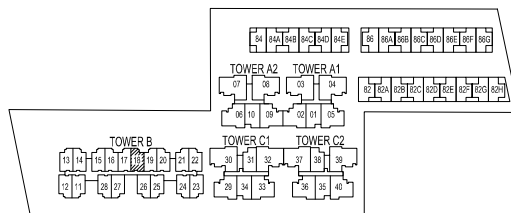
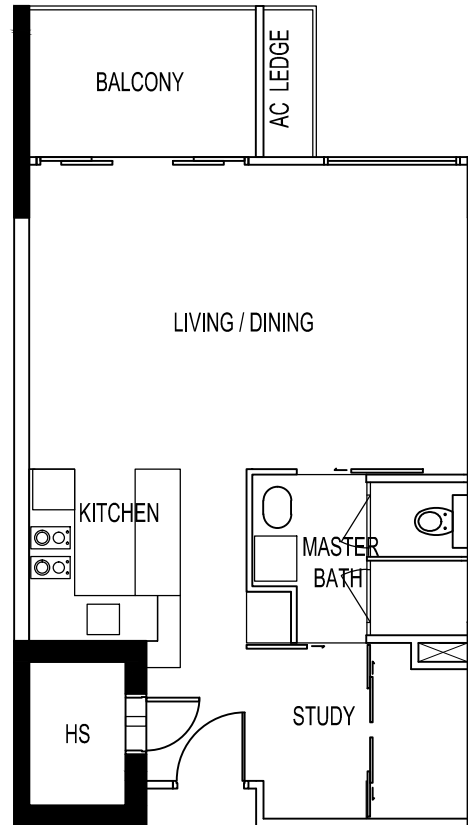


THE SEAWIND

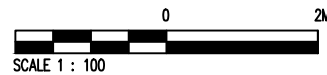
UNIT # 04-18
80 LORONG M TELOK KURAU

Type - SA1(b)

BELOW PLAN IS SUBJECT TO CHANGE AS MAY BE
APPROVED BY THE RELEVANT AUTHORITIES



KEY PLAN
NOT TO SCALE

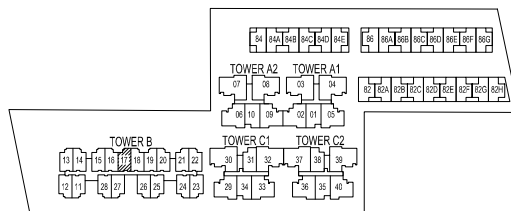
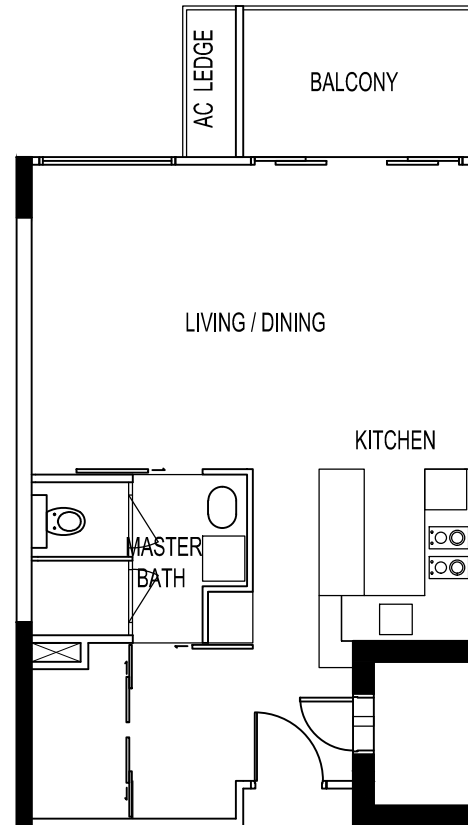


THE SEAWIND

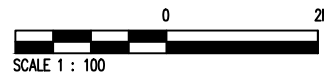
UNIT # 04-17
80 LORONG M TELOK KURAU

Type - SA1(b)

BELOW PLAN IS SUBJECT TO CHANGE AS MAY BE
APPROVED BY THE RELEVANT AUTHORITIES



KEY PLAN
NOT TO SCALE

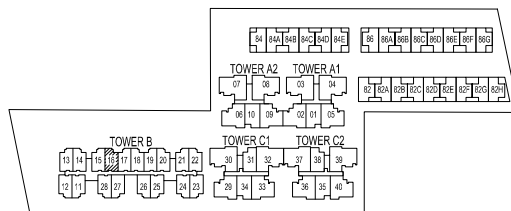
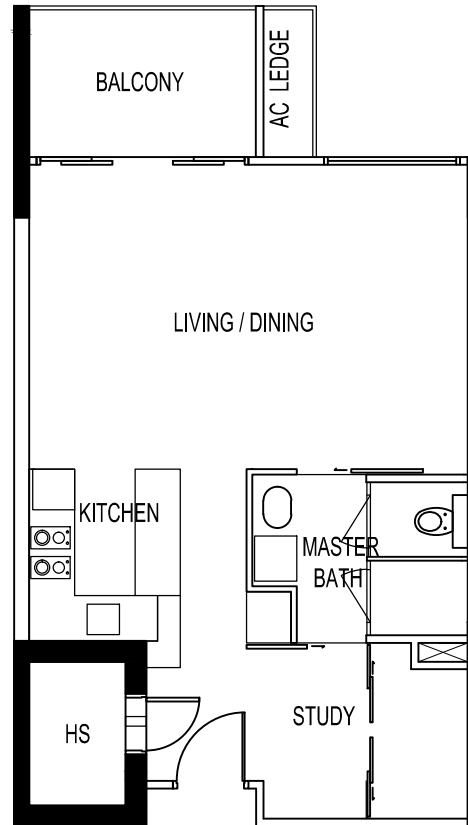


THE SEAWIND

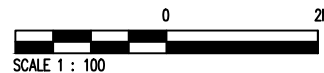
UNIT # 04-16
80 LORONG M TELOK KURAU

Type - SA1(b)

BELOW PLAN IS SUBJECT TO CHANGE AS MAY BE
APPROVED BY THE RELEVANT AUTHORITIES



KEY PLAN
NOT TO SCALE

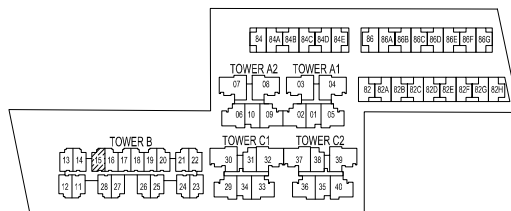
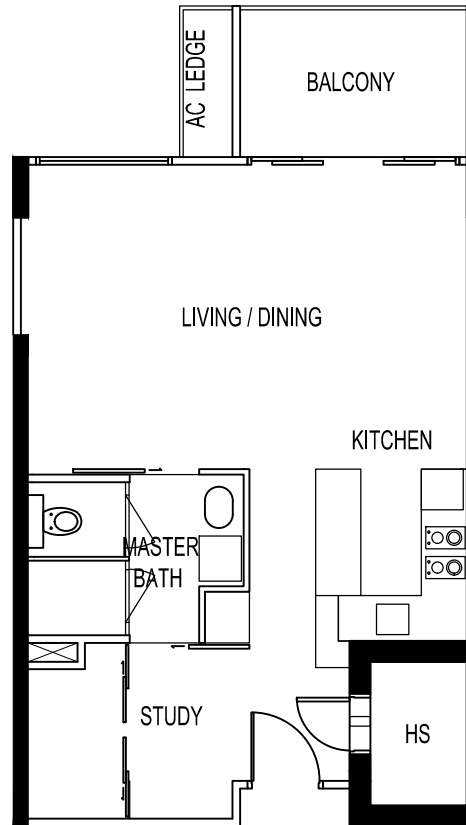


THE SEAWIND

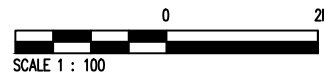
UNIT # 04-15
80 LORONG M TELOK KURAU

Type - SA2(b)

BELOW PLAN IS SUBJECT TO CHANGE AS MAY BE
APPROVED BY THE RELEVANT AUTHORITIES



KEY PLAN
NOT TO SCALE

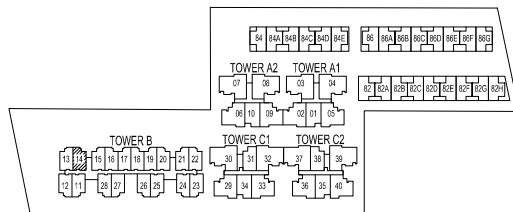
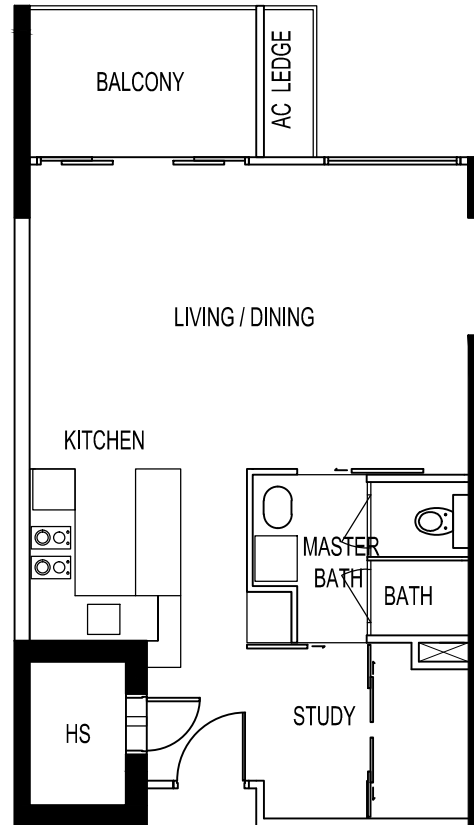


THE SEAWIND

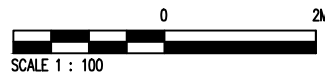
UNIT # 04-14
80 LORONG M TELOK KURAU

Type - SA2(b)

BELOW PLAN IS SUBJECT TO CHANGE AS MAY BE
APPROVED BY THE RELEVANT AUTHORITIES



KEY PLAN
NOT TO SCALE

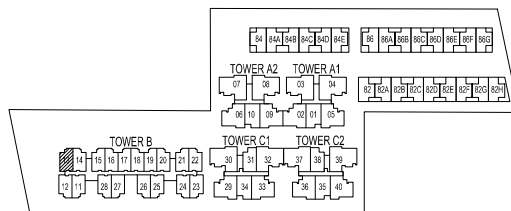
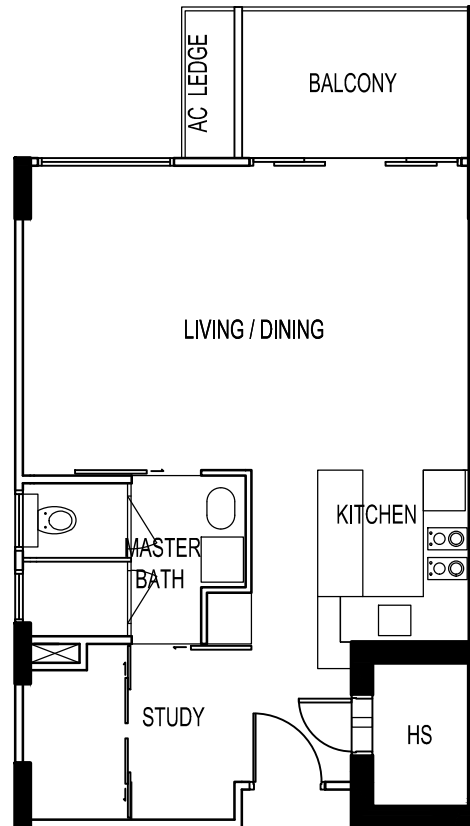


THE SEAWIND

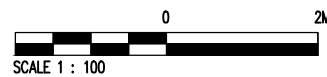
UNIT # 04-13
80 LORONG M TELOK KURAU

Type - SA4(b)

BELOW PLAN IS SUBJECT TO CHANGE AS MAY BE
APPROVED BY THE RELEVANT AUTHORITIES



KEY PLAN
NOT TO SCALE

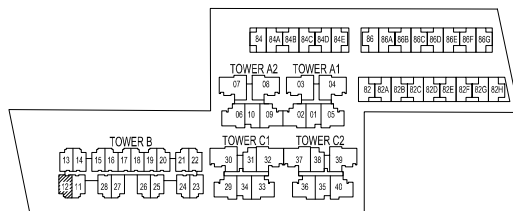
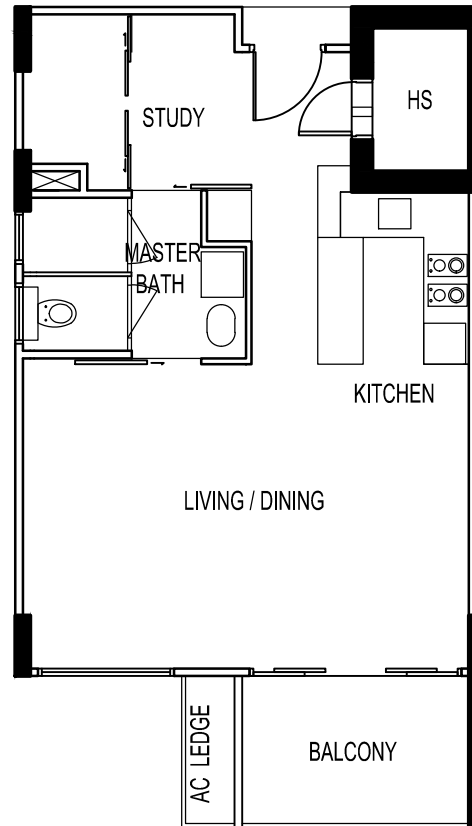


THE SEAWIND

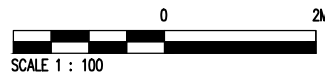
UNIT # 04-12
80 LORONG M TELOK KURAU

Type - SA4(b)

BELOW PLAN IS SUBJECT TO CHANGE AS MAY BE
APPROVED BY THE RELEVANT AUTHORITIES



KEY PLAN
NOT TO SCALE

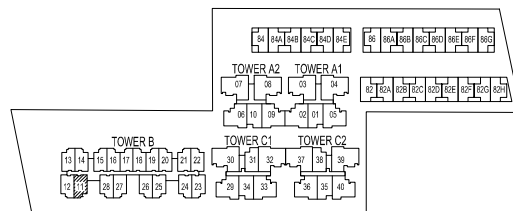
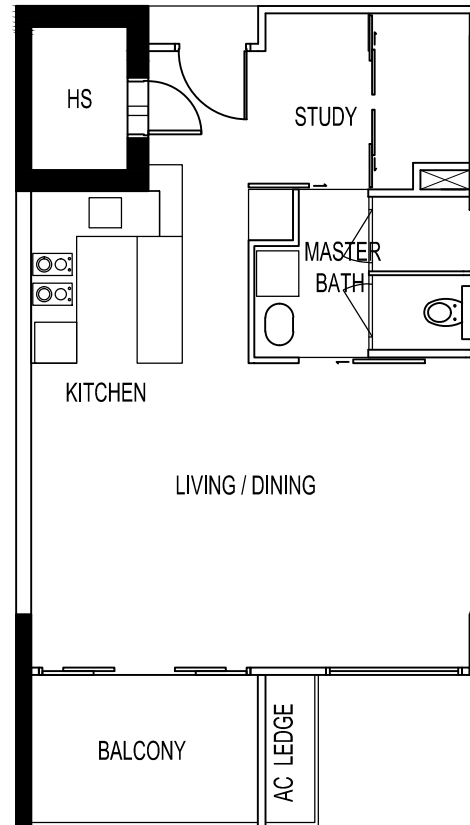


THE SEAWIND

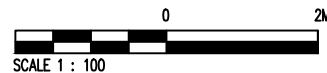
UNIT # 04-11
80 LORONG M TELOK KURAU

Type - SA3(b)

BELOW PLAN IS SUBJECT TO CHANGE AS MAY BE
APPROVED BY THE RELEVANT AUTHORITIES



KEY PLAN
NOT TO SCALE

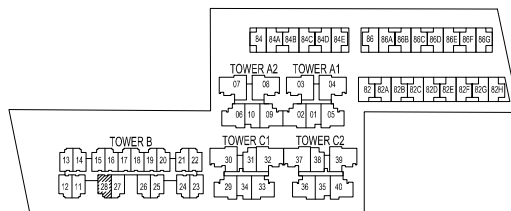
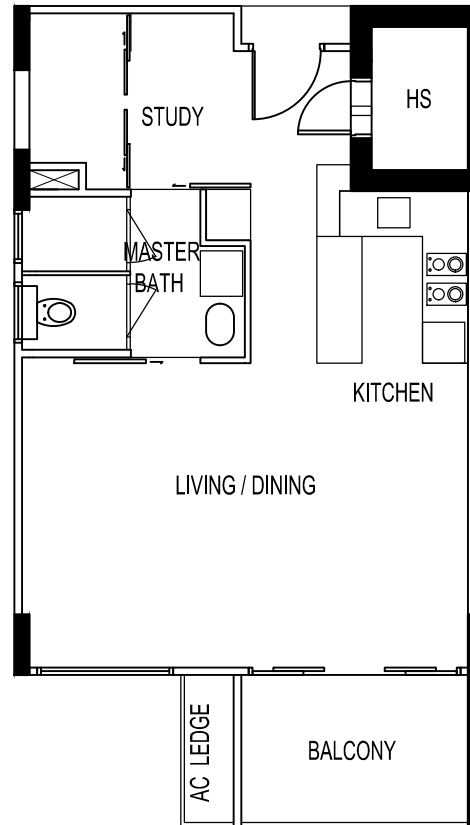


THE SEAWIND

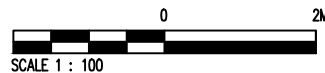
UNIT # 03-28
80 LORONG M TELOK KURAU

Type - SA3(b)

BELOW PLAN IS SUBJECT TO CHANGE AS MAY BE
APPROVED BY THE RELEVANT AUTHORITIES



KEY PLAN
NOT TO SCALE

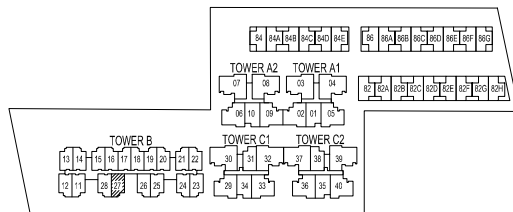
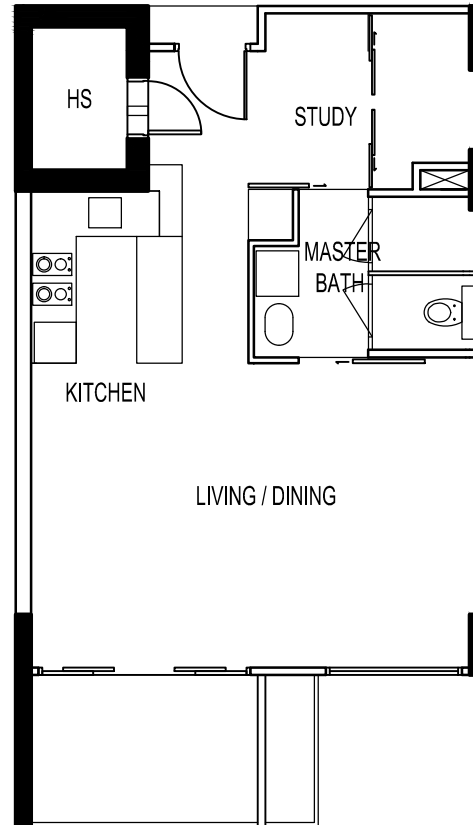


THE SEAWIND

UNIT # 03-27
80 LORONG M TELOK KURAU

Type - SA4(b)

BELOW PLAN IS SUBJECT TO CHANGE AS MAY BE
APPROVED BY THE RELEVANT AUTHORITIES



KEY PLAN
NOT TO SCALE

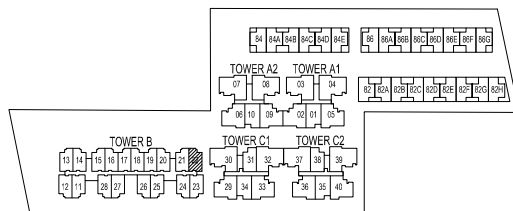
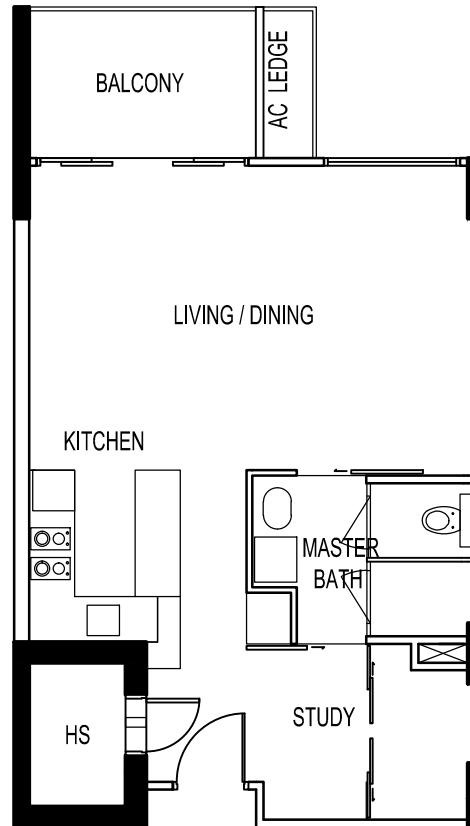


THE SEAWIND

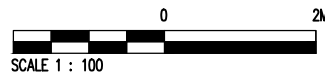
UNIT # 03-22
80 LORONG M TELOK KURAU

Type - SA4(b)

BELOW PLAN IS SUBJECT TO CHANGE AS MAY BE
APPROVED BY THE RELEVANT AUTHORITIES



KEY PLAN
NOT TO SCALE

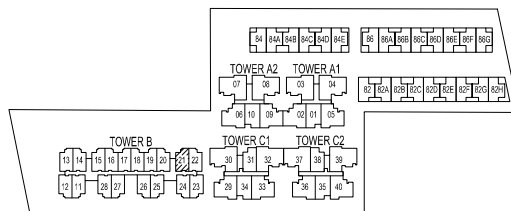
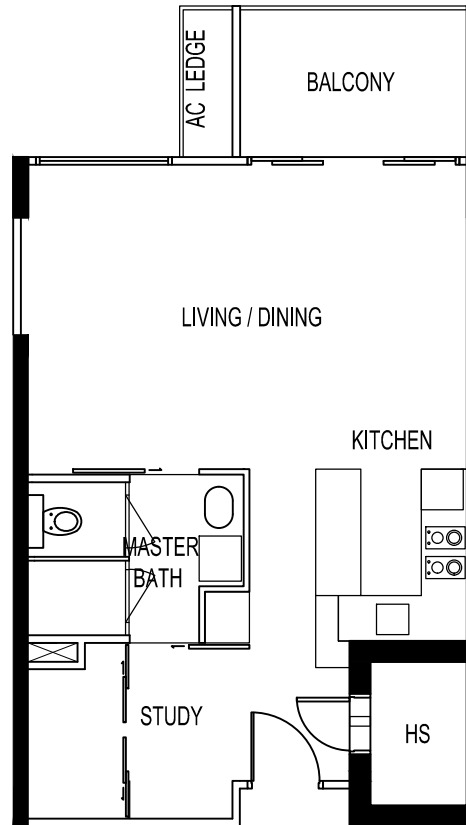


THE SEAWIND

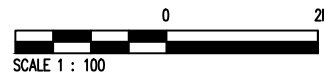
UNIT # 03-21
80 LORONG M TELOK KURAU

Type - SA2(b)

BELOW PLAN IS SUBJECT TO CHANGE AS MAY BE
APPROVED BY THE RELEVANT AUTHORITIES



KEY PLAN
NOT TO SCALE

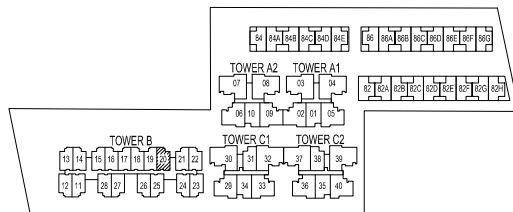
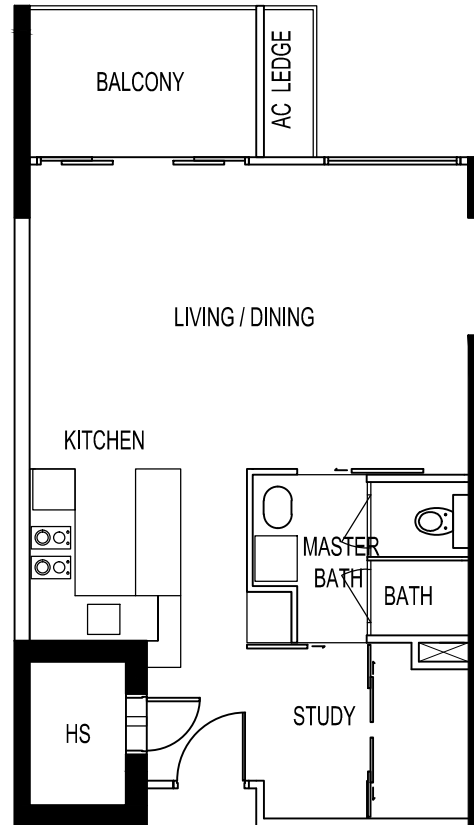


THE SEAWIND

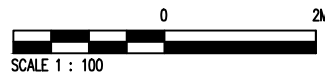
UNIT # 03-20
80 LORONG M TELOK KURAU

Type - SA2(b)

BELOW PLAN IS SUBJECT TO CHANGE AS MAY BE
APPROVED BY THE RELEVANT AUTHORITIES



KEY PLAN
NOT TO SCALE

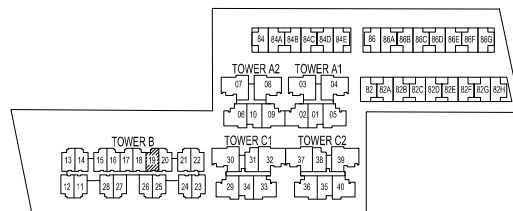
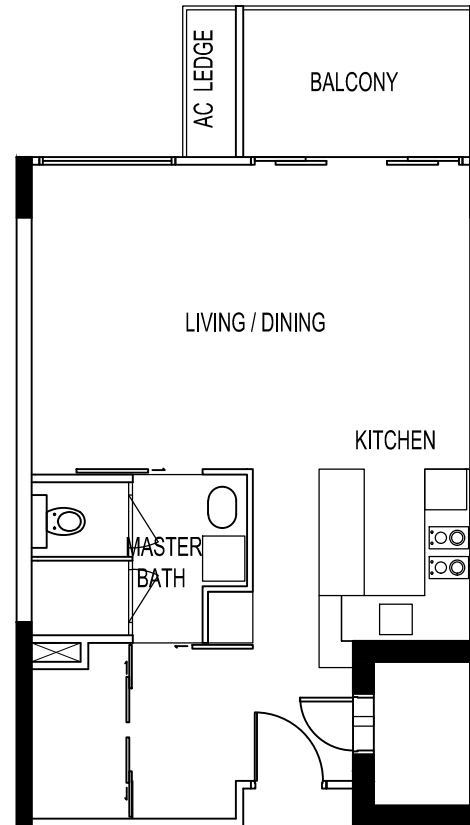


THE SEAWIND

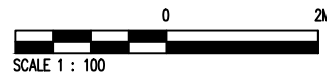
UNIT # 03-19
80 LORONG M TELOK KURAU

Type - SA1(b)

BELOW PLAN IS SUBJECT TO CHANGE AS MAY BE
APPROVED BY THE RELEVANT AUTHORITIES



KEY PLAN
NOT TO SCALE

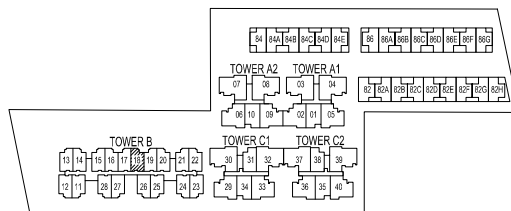
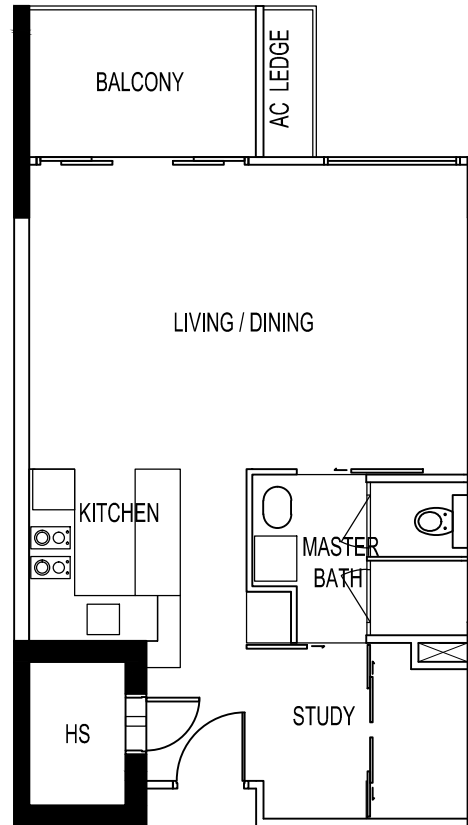


THE SEAWIND

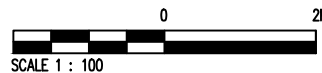
UNIT # 03-18
80 LORONG M TELOK KURAU

Type - SA1(b)

BELOW PLAN IS SUBJECT TO CHANGE AS MAY BE
APPROVED BY THE RELEVANT AUTHORITIES



KEY PLAN
NOT TO SCALE

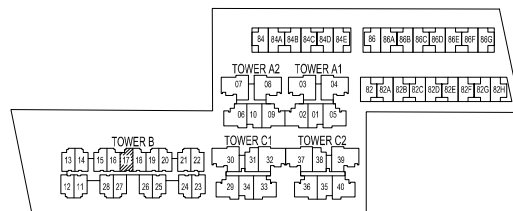
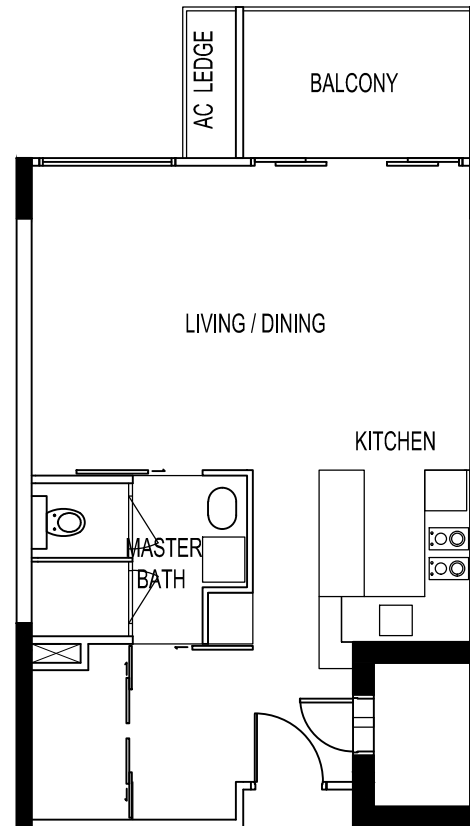


THE SEAWIND

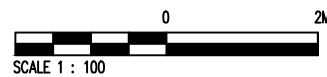
UNIT # 03-17
80 LORONG M TELOK KURAU

Type - SA1(b)

BELOW PLAN IS SUBJECT TO CHANGE AS MAY BE
APPROVED BY THE RELEVANT AUTHORITIES



KEY PLAN
NOT TO SCALE

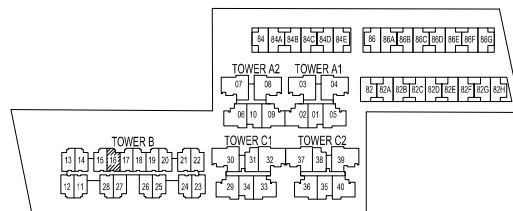
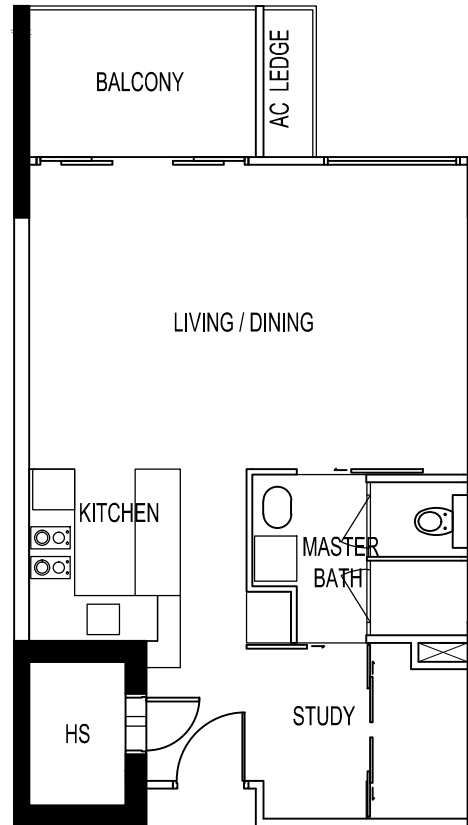


THE SEAWIND

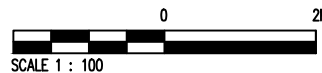
UNIT # 03-16
80 LORONG M TELOK KURAU

Type - SA1(b)

BELOW PLAN IS SUBJECT TO CHANGE AS MAY BE
APPROVED BY THE RELEVANT AUTHORITIES



KEY PLAN
NOT TO SCALE

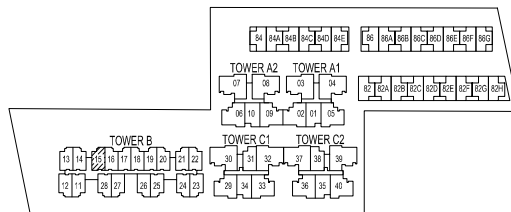
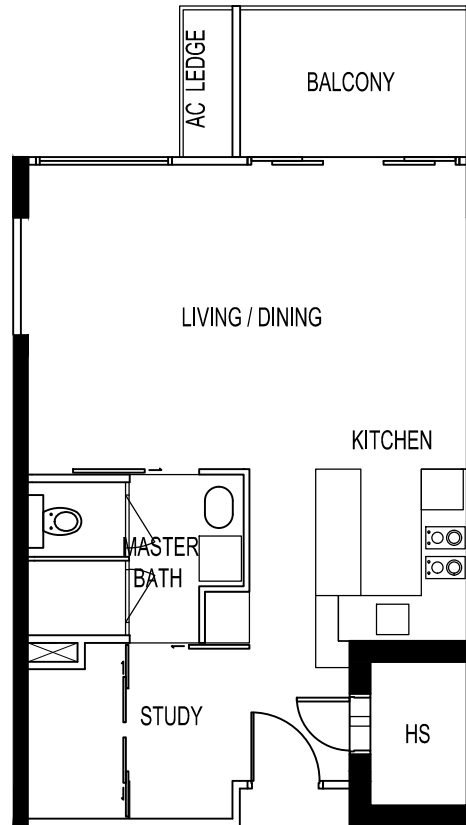


THE SEAWIND

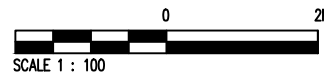
UNIT # 03-15
80 LORONG M TELOK KURAU

Type - SA2(b)

BELOW PLAN IS SUBJECT TO CHANGE AS MAY BE
APPROVED BY THE RELEVANT AUTHORITIES



KEY PLAN
NOT TO SCALE

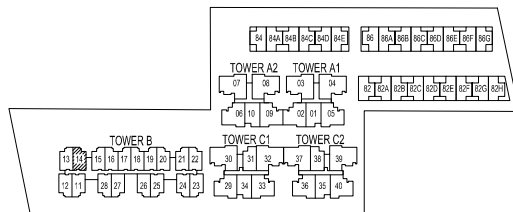
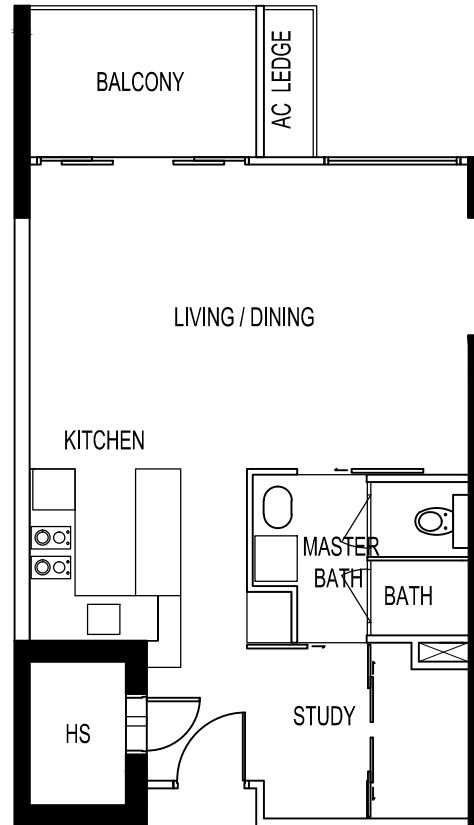


THE SEAWIND

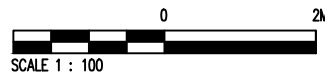
UNIT # 03-14
80 LORONG M TELOK KURAU

Type - SA2(b)

BELOW PLAN IS SUBJECT TO CHANGE AS MAY BE
APPROVED BY THE RELEVANT AUTHORITIES



KEY PLAN
NOT TO SCALE

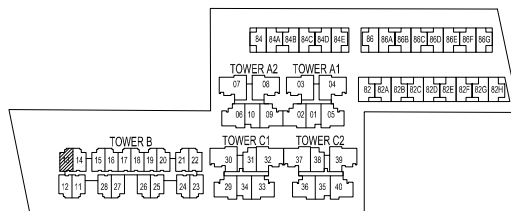
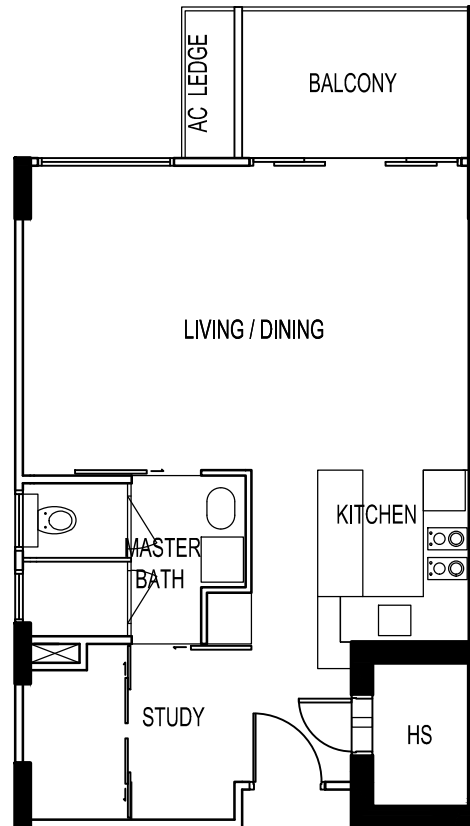


THE SEAWIND

UNIT # 03-13
80 LORONG M TELOK KURAU

Type - SA4(b)

BELOW PLAN IS SUBJECT TO CHANGE AS MAY BE
APPROVED BY THE RELEVANT AUTHORITIES



KEY PLAN
NOT TO SCALE

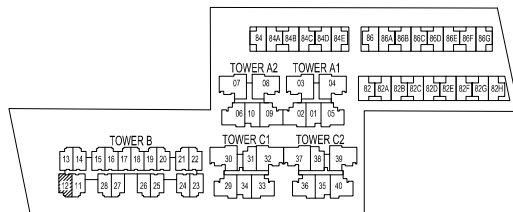
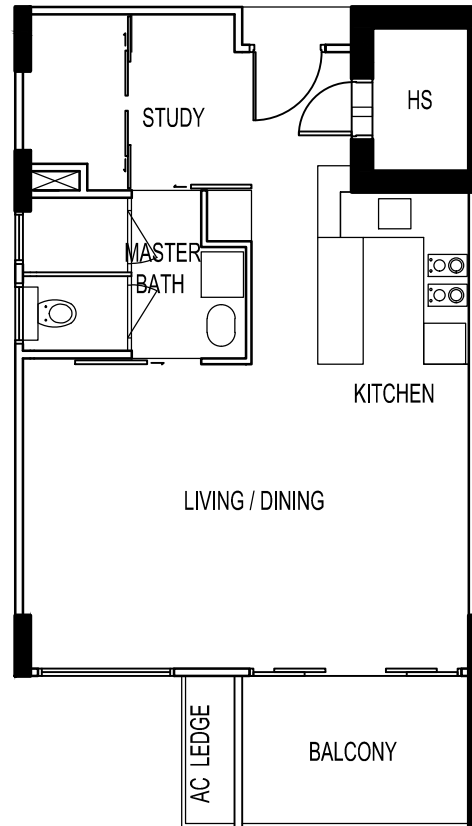


THE SEAWIND

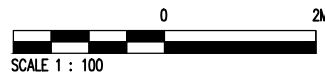
UNIT # 03-12
80 LORONG M TELOK KURAU

Type - SA4(b)

BELOW PLAN IS SUBJECT TO CHANGE AS MAY BE
APPROVED BY THE RELEVANT AUTHORITIES



KEY PLAN
NOT TO SCALE

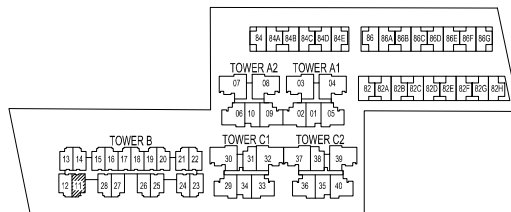
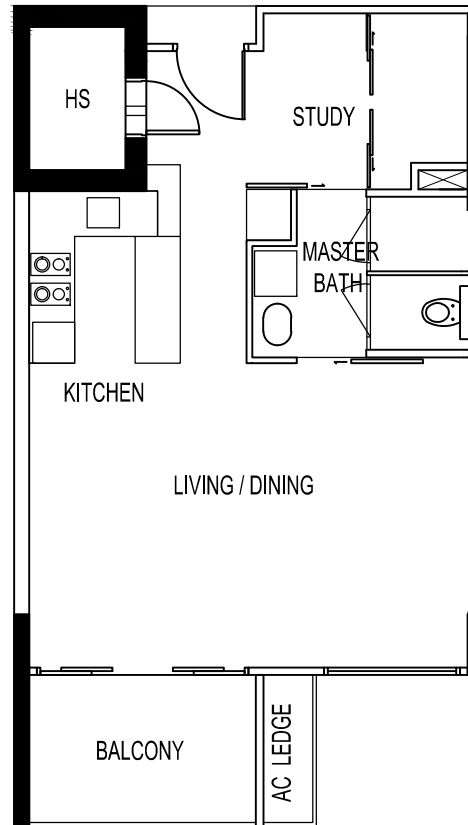


THE SEAWIND

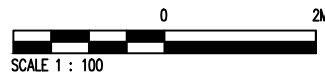
UNIT # 03-11
80 LORONG M TELOK KURAU

Type - SA3(b)

BELOW PLAN IS SUBJECT TO CHANGE AS MAY BE
APPROVED BY THE RELEVANT AUTHORITIES



KEY PLAN
NOT TO SCALE

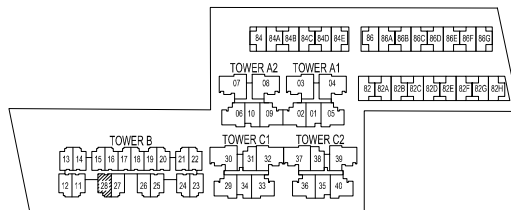
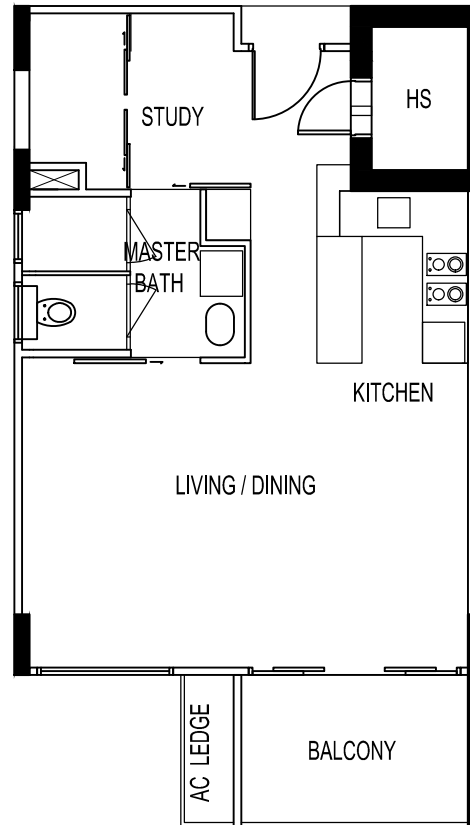


THE SEAWIND

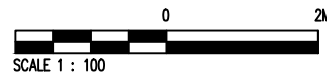
UNIT # 02-28
80 LORONG M TELOK KURAU

Type - SA3(b)

BELOW PLAN IS SUBJECT TO CHANGE AS MAY BE
APPROVED BY THE RELEVANT AUTHORITIES



KEY PLAN
NOT TO SCALE

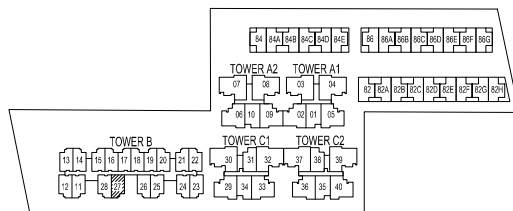
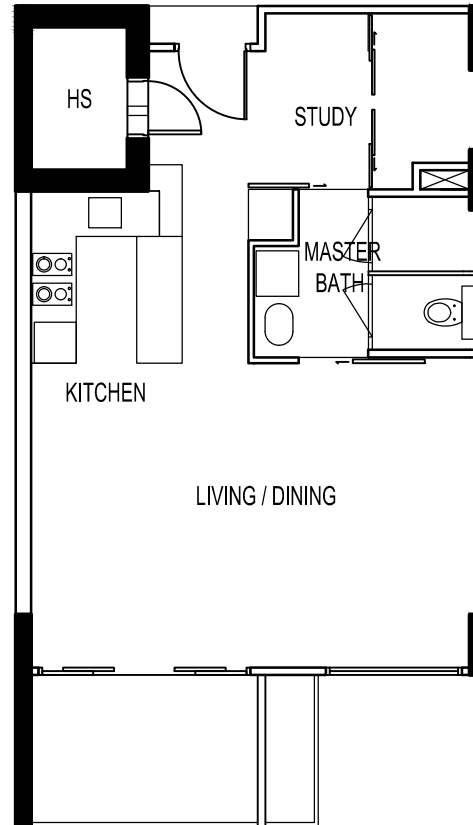


THE SEAWIND

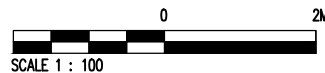
UNIT # 02-27
80 LORONG M TELOK KURAU

Type - SA4(b)

BELOW PLAN IS SUBJECT TO CHANGE AS MAY BE
APPROVED BY THE RELEVANT AUTHORITIES



KEY PLAN
NOT TO SCALE

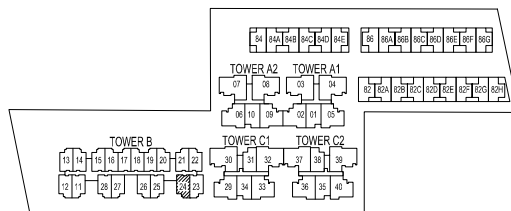
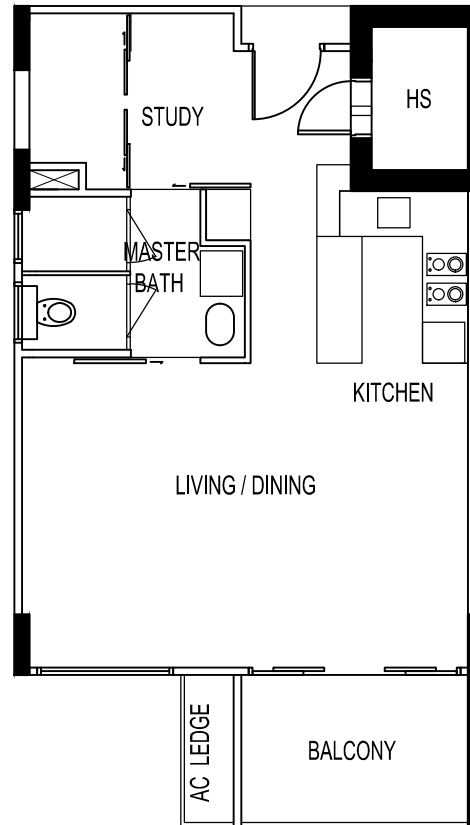


THE SEAWIND

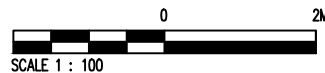
UNIT # 02-24
80 LORONG M TELOK KURAU

Type - SA3(b)

BELOW PLAN IS SUBJECT TO CHANGE AS MAY BE
APPROVED BY THE RELEVANT AUTHORITIES



KEY PLAN
NOT TO SCALE

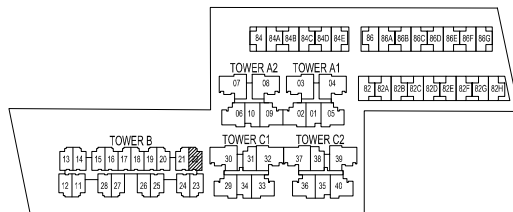
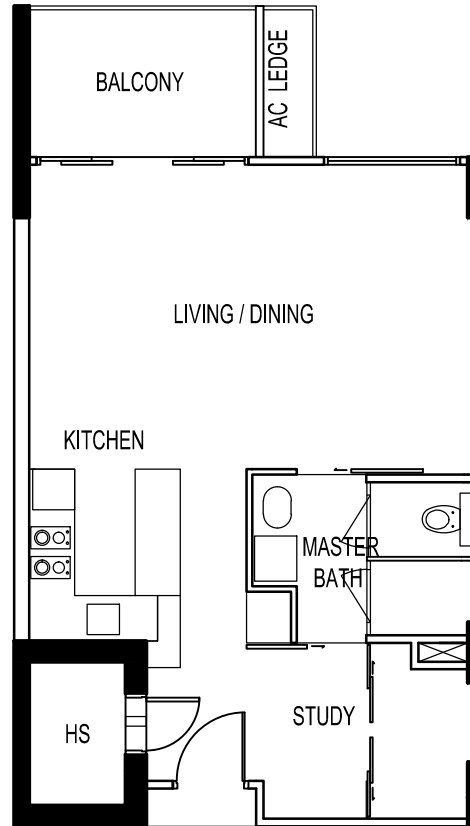


THE SEAWIND

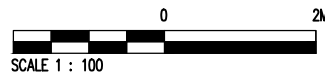
UNIT # 02-22
80 LORONG M TELOK KURAU

Type - SA4(b)

BELOW PLAN IS SUBJECT TO CHANGE AS MAY BE
APPROVED BY THE RELEVANT AUTHORITIES



KEY PLAN
NOT TO SCALE

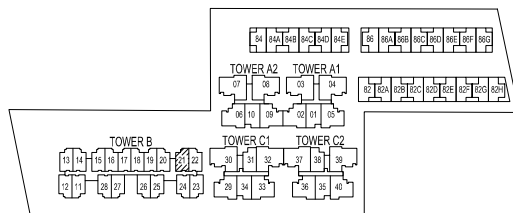
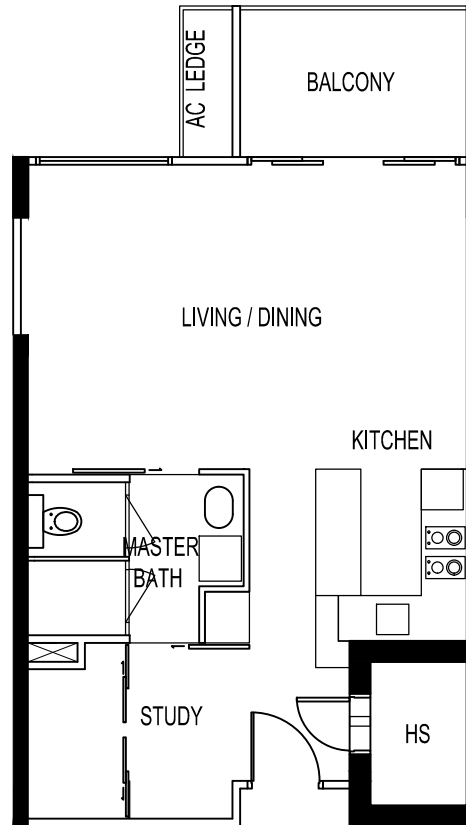


THE SEAWIND

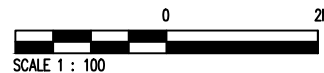
UNIT # 02-21
80 LORONG M TELOK KURAU

Type - SA2(b)

BELOW PLAN IS SUBJECT TO CHANGE AS MAY BE
APPROVED BY THE RELEVANT AUTHORITIES



KEY PLAN
NOT TO SCALE

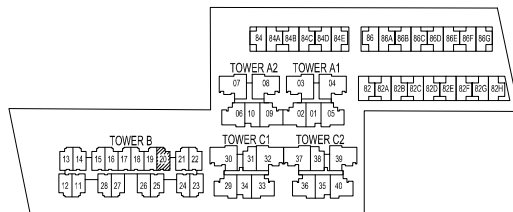
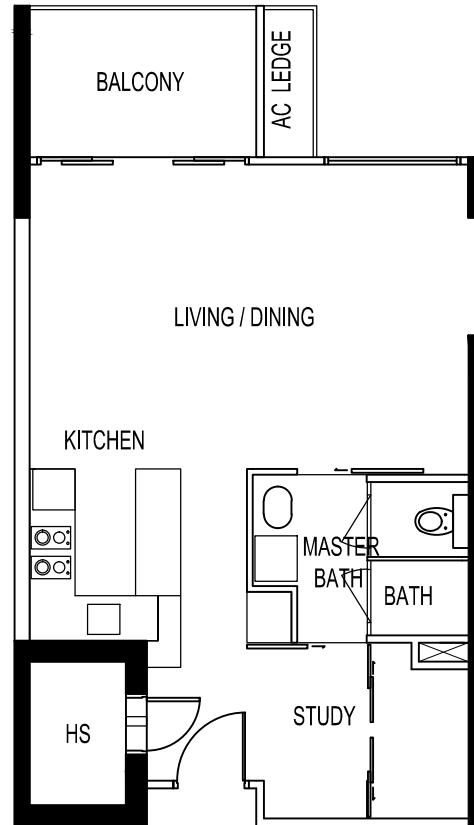


THE SEAWIND

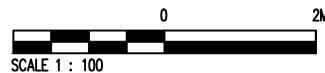
UNIT # 02-20
80 LORONG M TELOK KURAU

Type - SA2(b)

BELOW PLAN IS SUBJECT TO CHANGE AS MAY BE
APPROVED BY THE RELEVANT AUTHORITIES



KEY PLAN
NOT TO SCALE

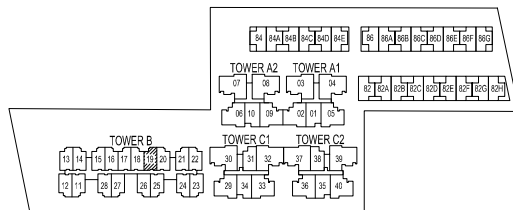
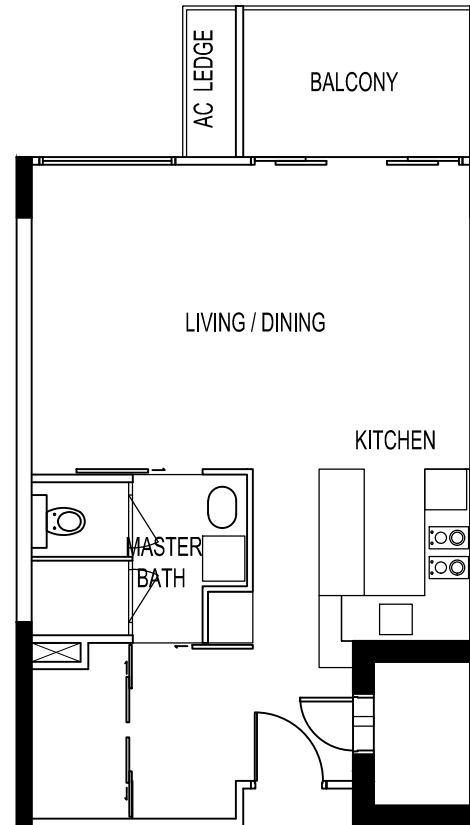


THE SEAWIND

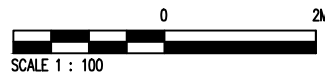
UNIT # 02-19
80 LORONG M TELOK KURAU

Type - SA1(b)

BELOW PLAN IS SUBJECT TO CHANGE AS MAY BE
APPROVED BY THE RELEVANT AUTHORITIES



KEY PLAN
NOT TO SCALE

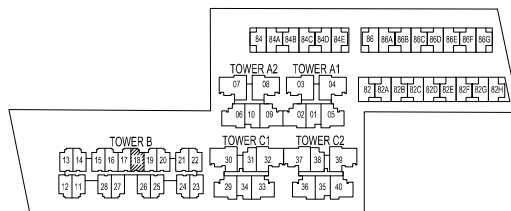
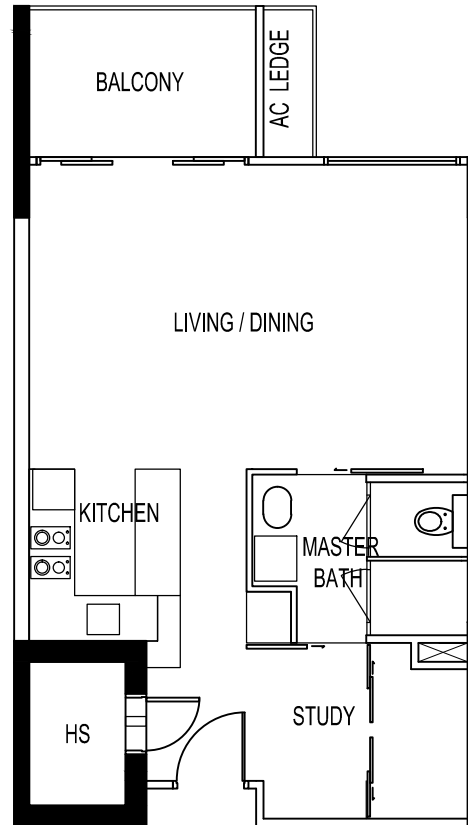


THE SEAWIND

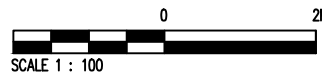
UNIT # 02-18
80 LORONG M TELOK KURAU

Type - SA1(b)

BELOW PLAN IS SUBJECT TO CHANGE AS MAY BE
APPROVED BY THE RELEVANT AUTHORITIES



KEY PLAN
NOT TO SCALE

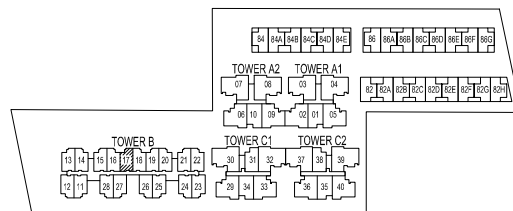
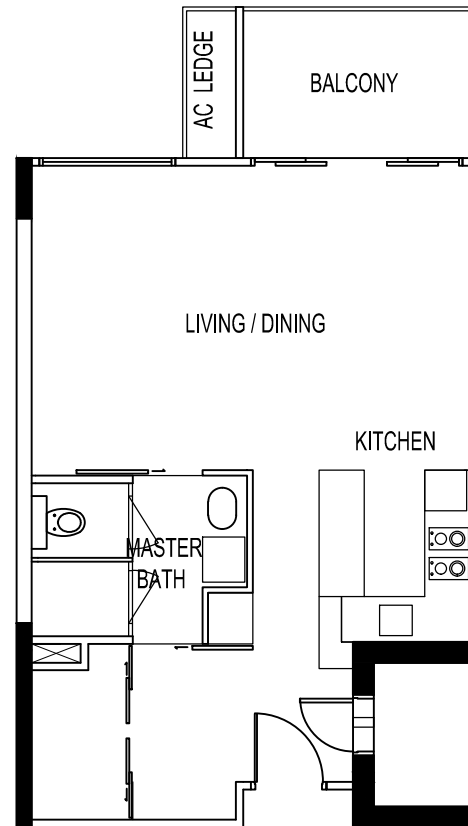


THE SEAWIND

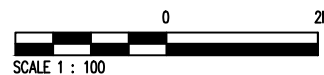
UNIT # 02-17
80 LORONG M TELOK KURAU

Type - SA1(b)

BELOW PLAN IS SUBJECT TO CHANGE AS MAY BE
APPROVED BY THE RELEVANT AUTHORITIES



KEY PLAN
NOT TO SCALE

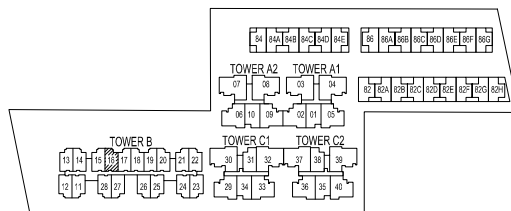
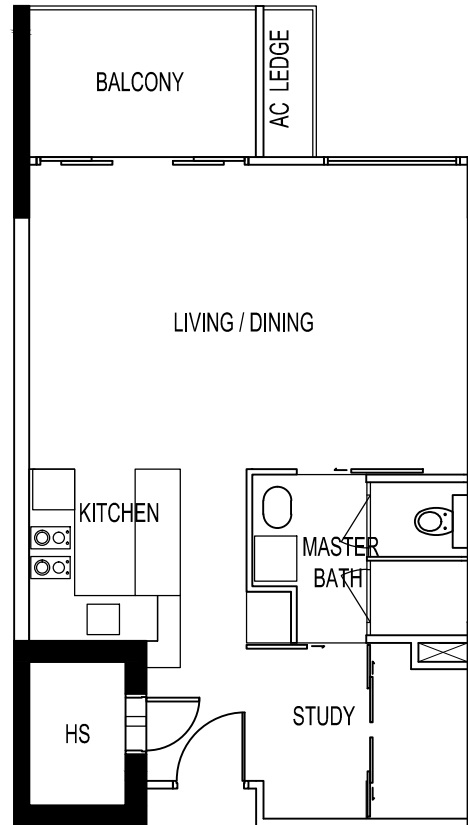


THE SEAWIND

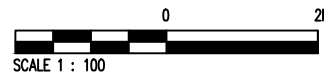
UNIT # 02-16
80 LORONG M TELOK KURAU

Type - SA1(b)

BELOW PLAN IS SUBJECT TO CHANGE AS MAY BE
APPROVED BY THE RELEVANT AUTHORITIES



KEY PLAN
NOT TO SCALE

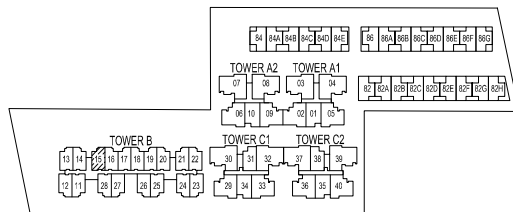
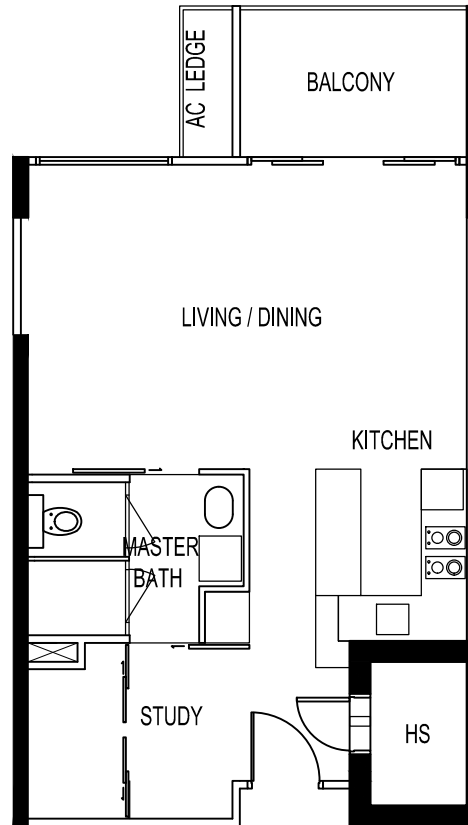


THE SEAWIND

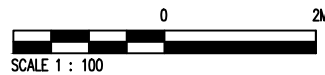
UNIT # 02-15
80 LORONG M TELOK KURAU

Type - SA2(b)

BELOW PLAN IS SUBJECT TO CHANGE AS MAY BE
APPROVED BY THE RELEVANT AUTHORITIES



KEY PLAN
NOT TO SCALE

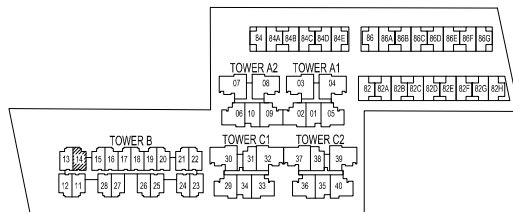
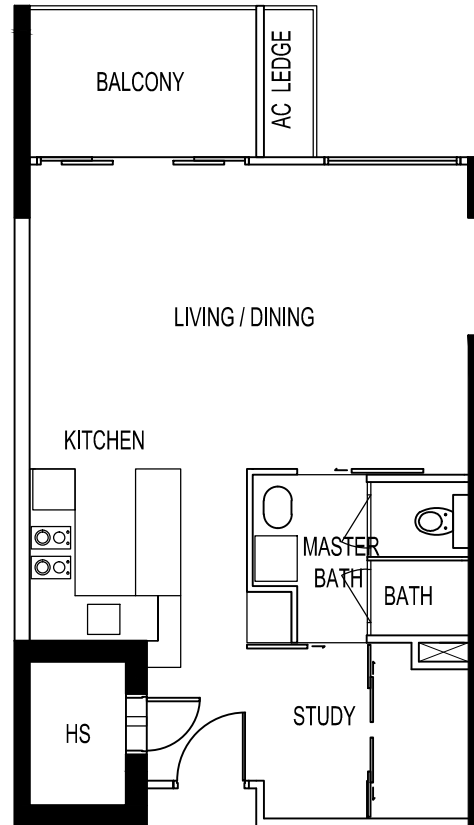


THE SEAWIND

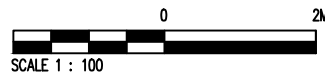
UNIT # 02-14
80 LORONG M TELOK KURAU

Type - SA2(b)

BELOW PLAN IS SUBJECT TO CHANGE AS MAY BE
APPROVED BY THE RELEVANT AUTHORITIES



KEY PLAN
NOT TO SCALE

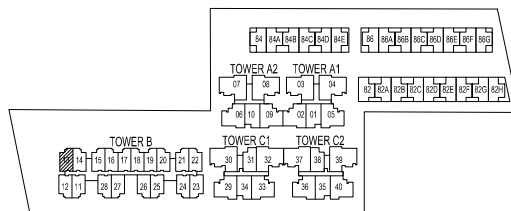
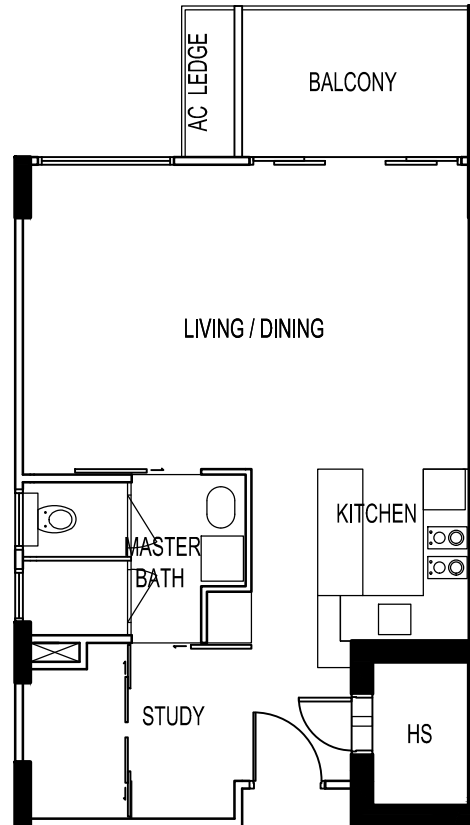


THE SEAWIND

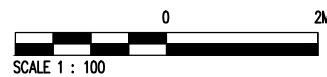
UNIT # 02-13
80 LORONG M TELOK KURAU

Type - SA4(b)

BELOW PLAN IS SUBJECT TO CHANGE AS MAY BE
APPROVED BY THE RELEVANT AUTHORITIES



KEY PLAN
NOT TO SCALE

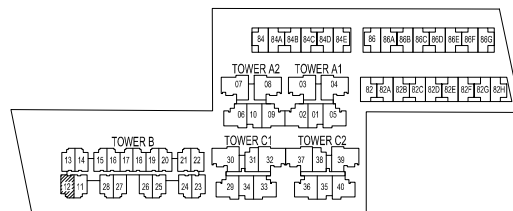
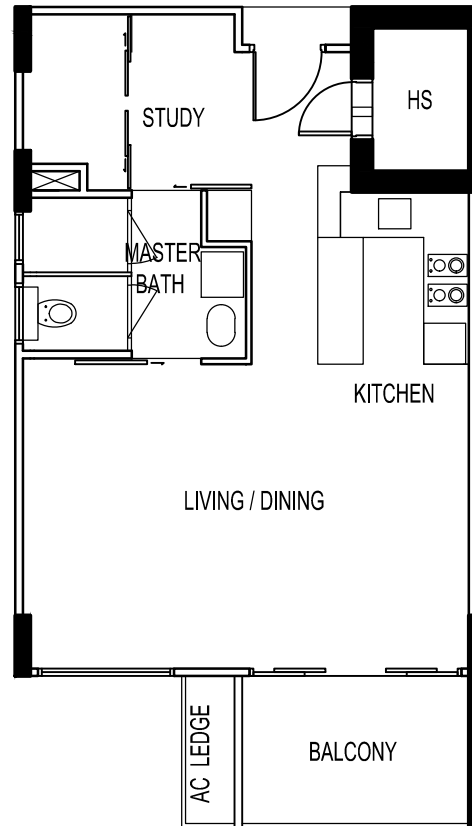


THE SEAWIND

UNIT # 02-12
80 LORONG M TELOK KURAU

Type - SA4(b)

BELOW PLAN IS SUBJECT TO CHANGE AS MAY BE
APPROVED BY THE RELEVANT AUTHORITIES



KEY PLAN
NOT TO SCALE

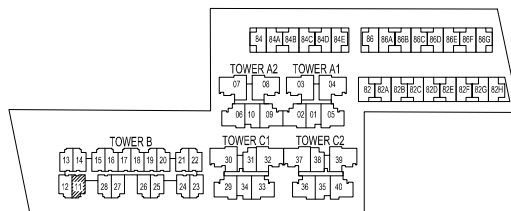
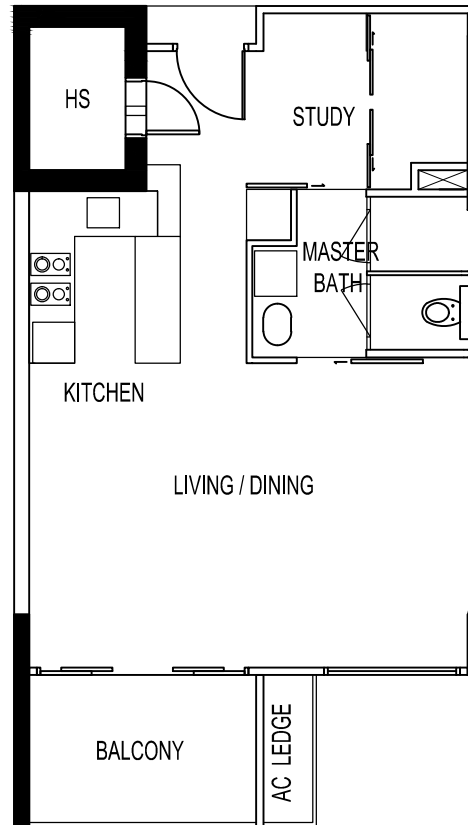


THE SEAWIND

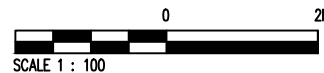
UNIT # 02-11
80 LORONG M TELOK KURAU

Type - SA3(b)

BELOW PLAN IS SUBJECT TO CHANGE AS MAY BE
APPROVED BY THE RELEVANT AUTHORITIES



KEY PLAN
NOT TO SCALE

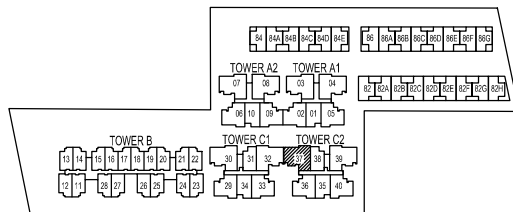
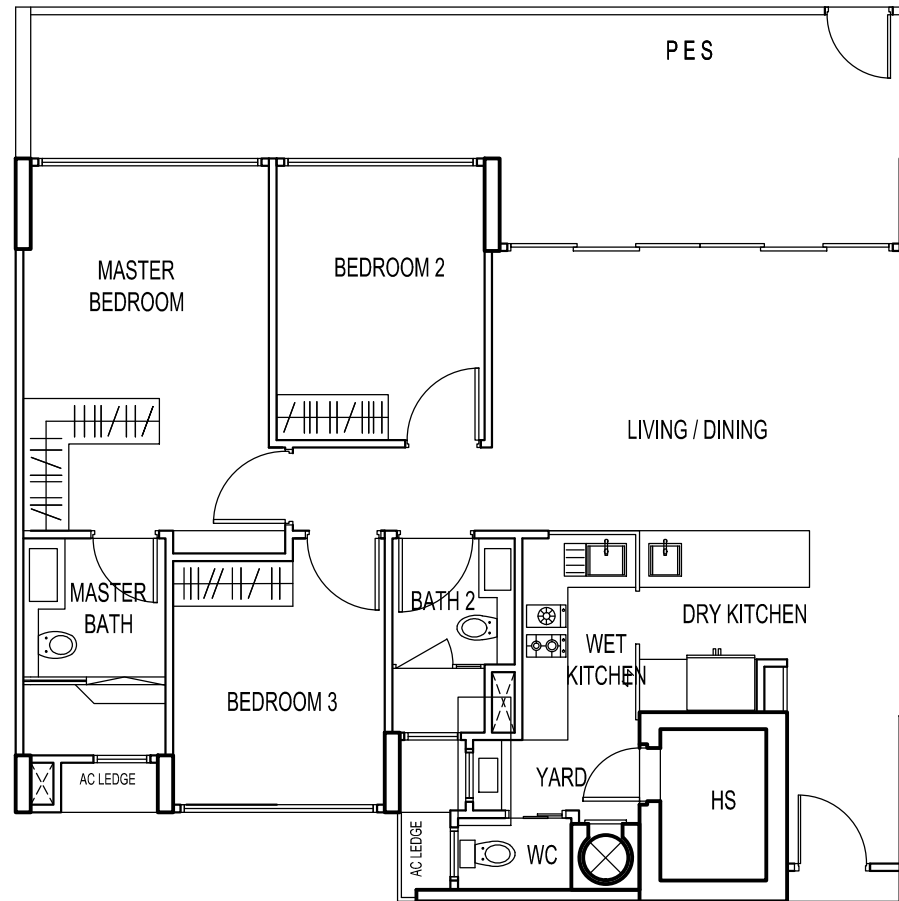


THE SEAWIND

UNIT # 01-37
80 LORONG M TELOK KURAU

Type - C2(p)

BELOW PLAN IS SUBJECT TO CHANGE AS MAY BE APPROVED BY THE RELEVANT AUTHORITIES



 KEY PLAN
NOT TO SCALE



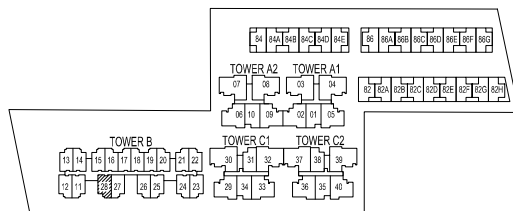
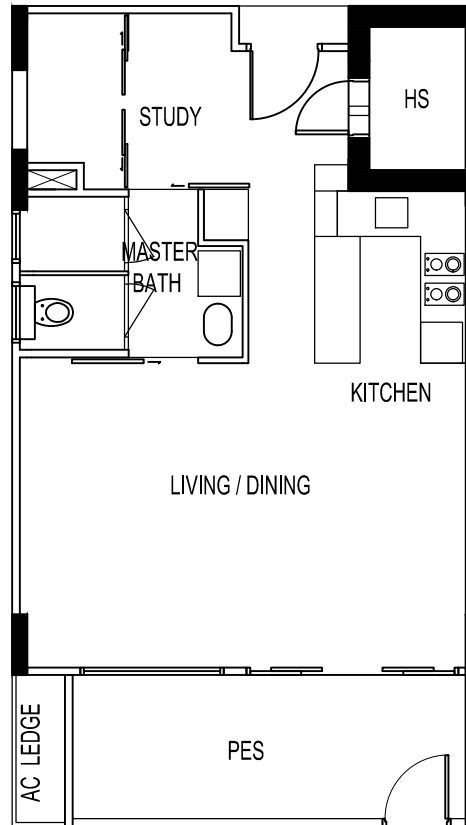
BP NO : A1136-00001-2008-BP01 DATED 24 OCT 2011

THE SEAWIND

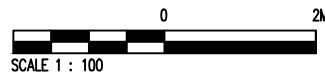
UNIT # 01-28
80 LORONG M TELOK KURAU

Type - SA3(p)

BELOW PLAN IS SUBJECT TO CHANGE AS MAY BE
APPROVED BY THE RELEVANT AUTHORITIES



KEY PLAN
NOT TO SCALE

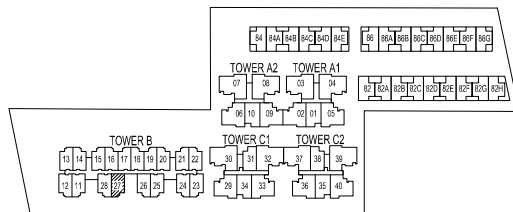
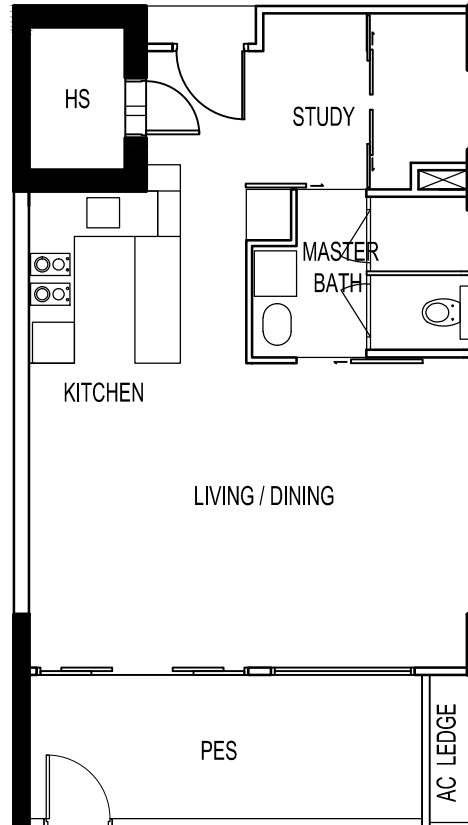


THE SEAWIND

UNIT # 01-27
80 LORONG M TELOK KURAU

Type - SA4(p)

BELOW PLAN IS SUBJECT TO CHANGE AS MAY BE
APPROVED BY THE RELEVANT AUTHORITIES



KEY PLAN
NOT TO SCALE

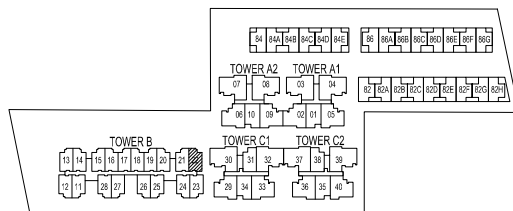
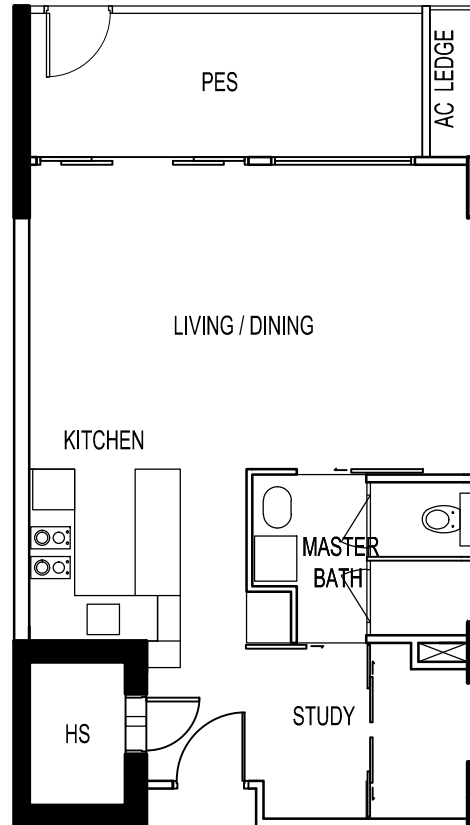


THE SEAWIND

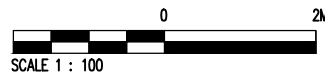
UNIT # 01-22
80 LORONG M TELOK KURAU

Type - SA4(p)

BELOW PLAN IS SUBJECT TO CHANGE AS MAY BE
APPROVED BY THE RELEVANT AUTHORITIES



KEY PLAN
NOT TO SCALE

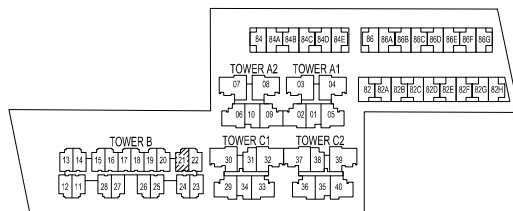
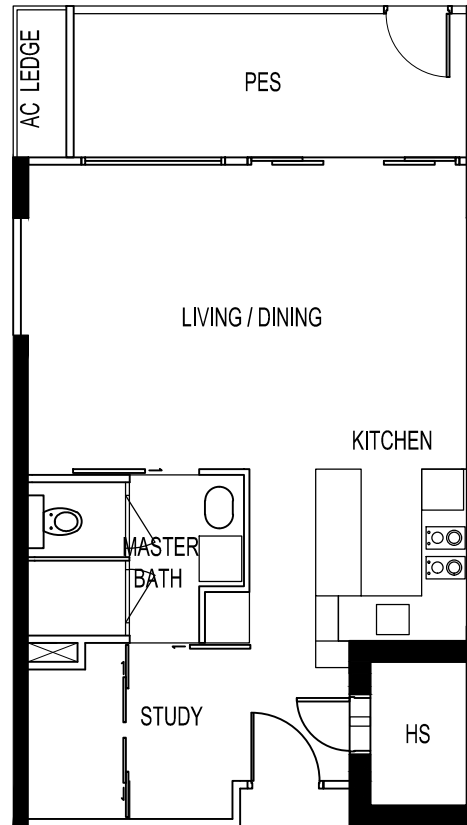


THE SEAWIND

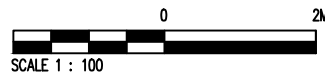
UNIT # 01-21
80 LORONG M TELOK KURAU

Type - SA2(p)

BELOW PLAN IS SUBJECT TO CHANGE AS MAY BE
APPROVED BY THE RELEVANT AUTHORITIES



KEY PLAN
NOT TO SCALE

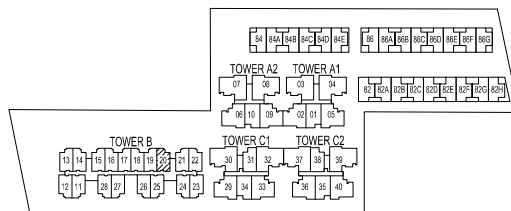
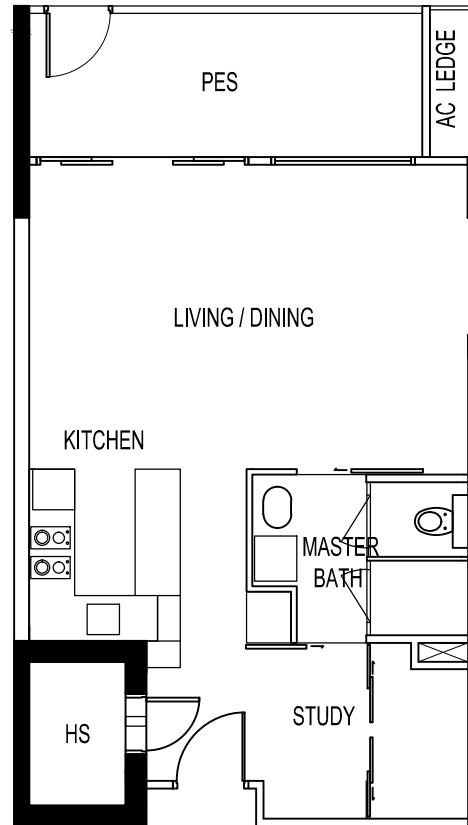


THE SEAWIND

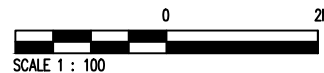
UNIT # 01-20
80 LORONG M TELOK KURAU

Type - SA2(p)

BELOW PLAN IS SUBJECT TO CHANGE AS MAY BE
APPROVED BY THE RELEVANT AUTHORITIES



KEY PLAN
NOT TO SCALE

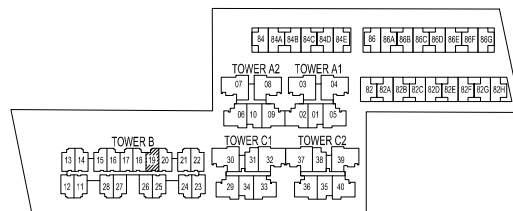
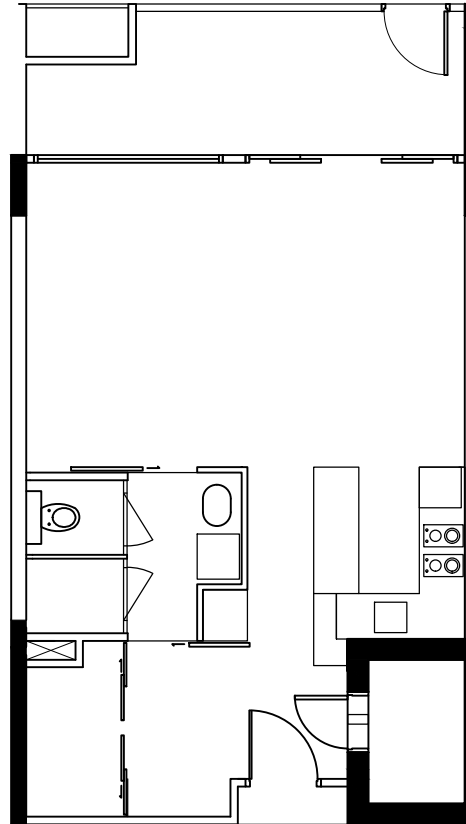


THE SEAWIND

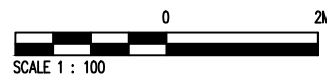
UNIT # 01-19
80 LORONG M TELOK KURAU

Type - SA1(p)

BELOW PLAN IS SUBJECT TO CHANGE AS MAY BE
APPROVED BY THE RELEVANT AUTHORITIES



KEY PLAN
NOT TO SCALE

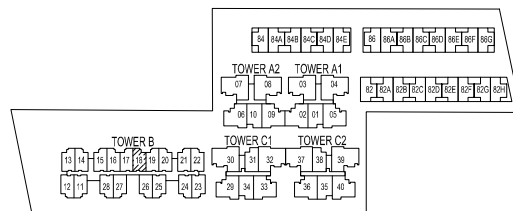
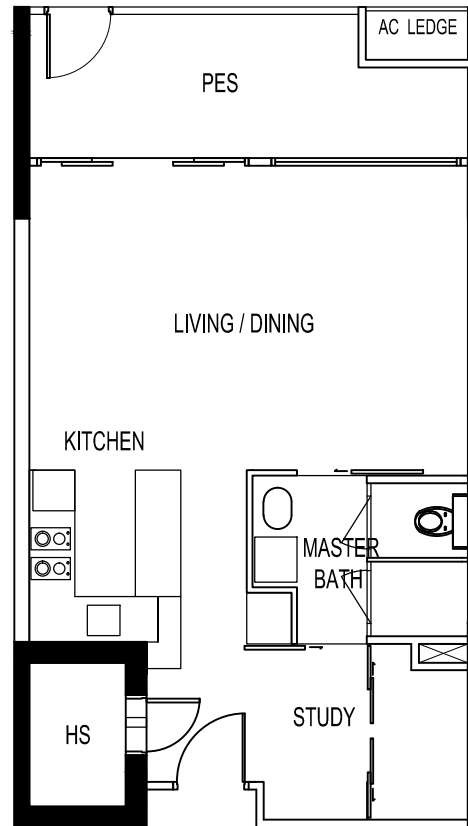


THE SEAWIND

UNIT # 01-18
80 LORONG M TELOK KURAU

Type - SA1(p)

BELOW PLAN IS SUBJECT TO CHANGE AS MAY BE
APPROVED BY THE RELEVANT AUTHORITIES



KEY PLAN
NOT TO SCALE

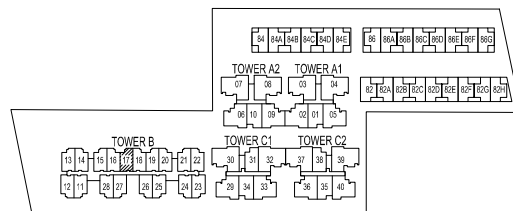
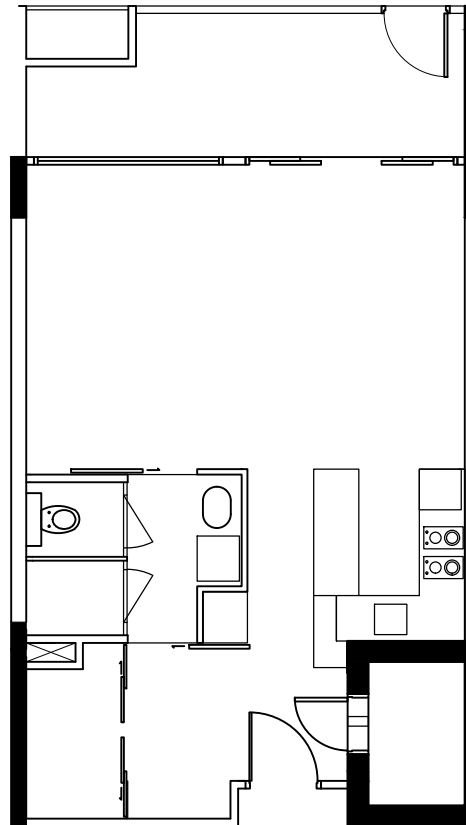


THE SEAWIND

UNIT # 01-17
80 LORONG M TELOK KURAU

Type - SA1(p)

BELOW PLAN IS SUBJECT TO CHANGE AS MAY BE
APPROVED BY THE RELEVANT AUTHORITIES



KEY PLAN
NOT TO SCALE

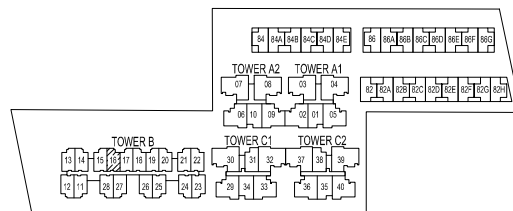
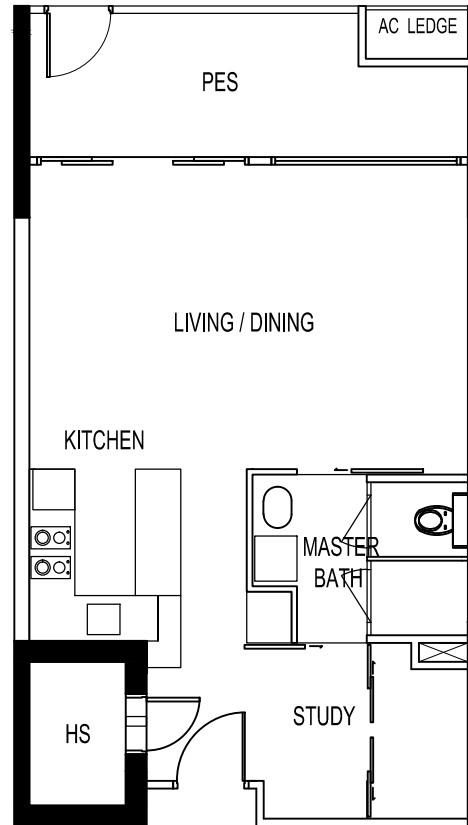


THE SEAWIND

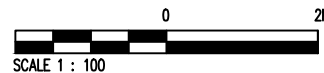
UNIT # 01-16
80 LORONG M TELOK KURAU

Type - SA1(p)

BELOW PLAN IS SUBJECT TO CHANGE AS MAY BE
APPROVED BY THE RELEVANT AUTHORITIES



KEY PLAN
NOT TO SCALE

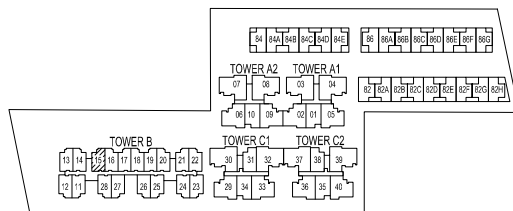
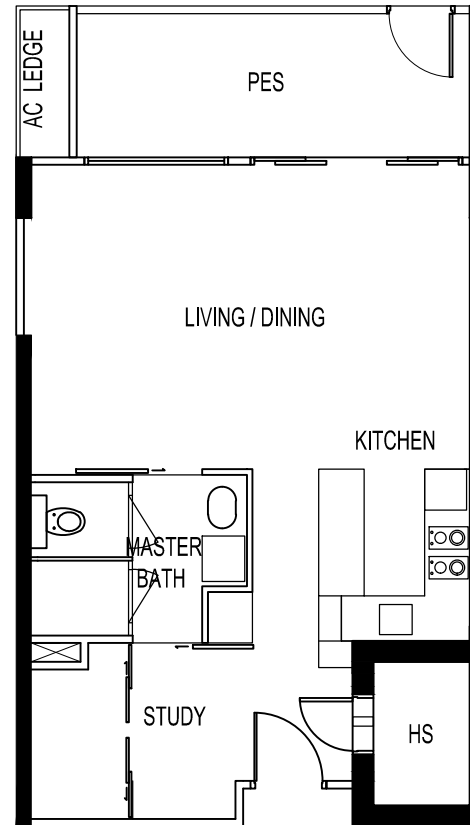


THE SEAWIND

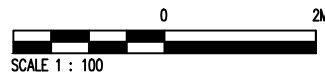
UNIT # 01-15
80 LORONG M TELOK KURAU

Type - SA2(p)

BELOW PLAN IS SUBJECT TO CHANGE AS MAY BE
APPROVED BY THE RELEVANT AUTHORITIES



KEY PLAN
NOT TO SCALE

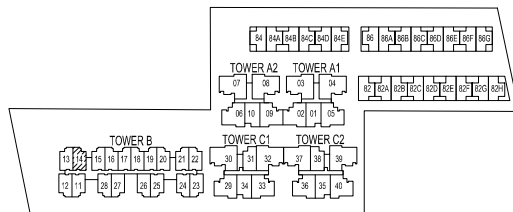
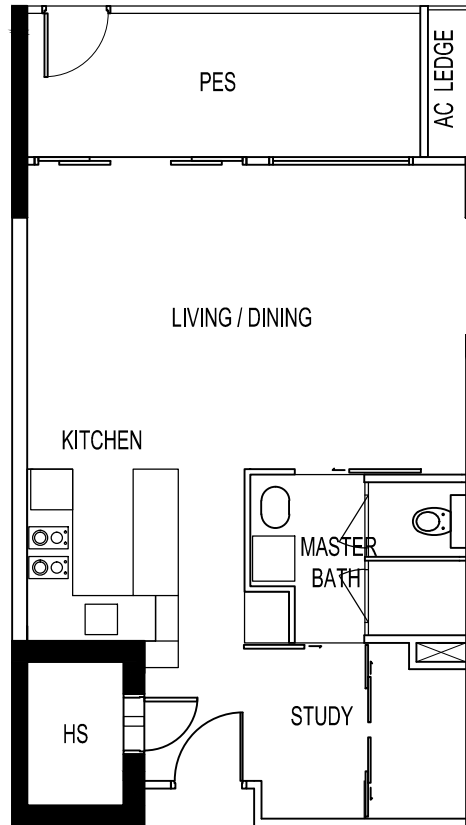


THE SEAWIND

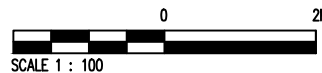
UNIT # 01-14
80 LORONG M TELOK KURAU

Type - SA2(p)

DISCLAIMER : THE ABOVE PLANS ARE SUBJECT TO CHANGE
AS MAY BE APPROVED BY THE RELAVANTAUTHORITIES



KEY PLAN
NOT TO SCALE

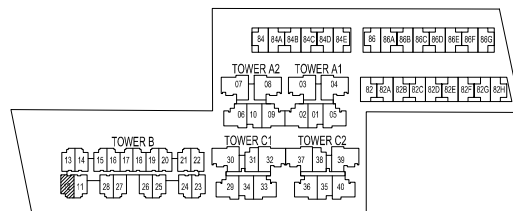
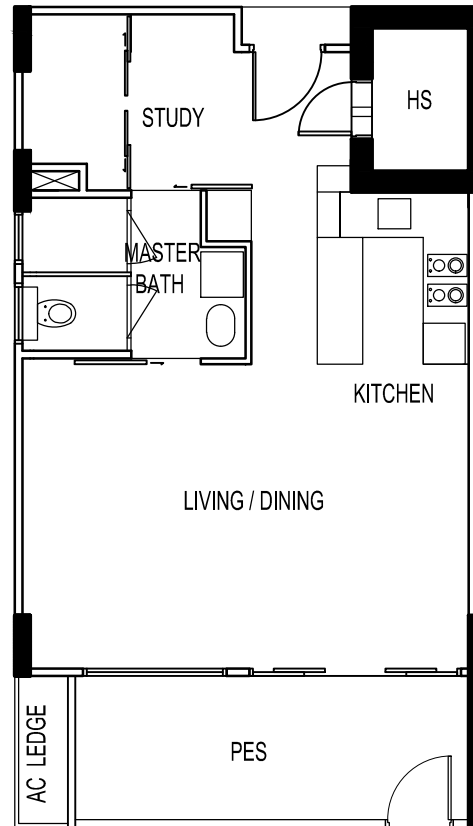


THE SEAWIND

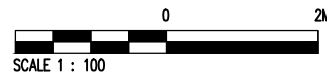
UNIT # 01-12
80 LORONG M TELOK KURAU

Type - SA4(p)

BELOW PLAN IS SUBJECT TO CHANGE AS MAY BE
APPROVED BY THE RELEVANT AUTHORITIES



KEY PLAN
NOT TO SCALE

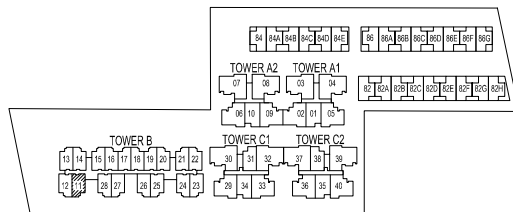
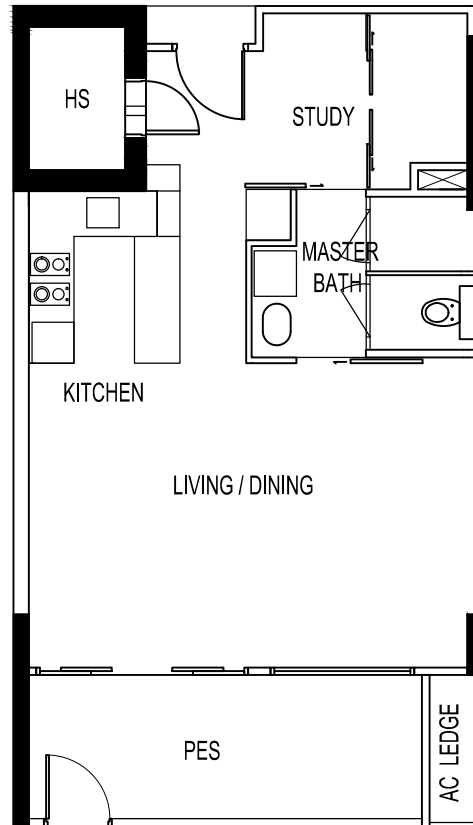


THE SEAWIND

UNIT # 01-11
80 LORONG M TELOK KURAU

Type - SA3(p)

BELOW PLAN IS SUBJECT TO CHANGE AS MAY BE
APPROVED BY THE RELEVANT AUTHORITIES



KEY PLAN
NOT TO SCALE

