



THE  
LIBRARY  
LONDON NW10

LEWIS COURT AT THE LIBRARY

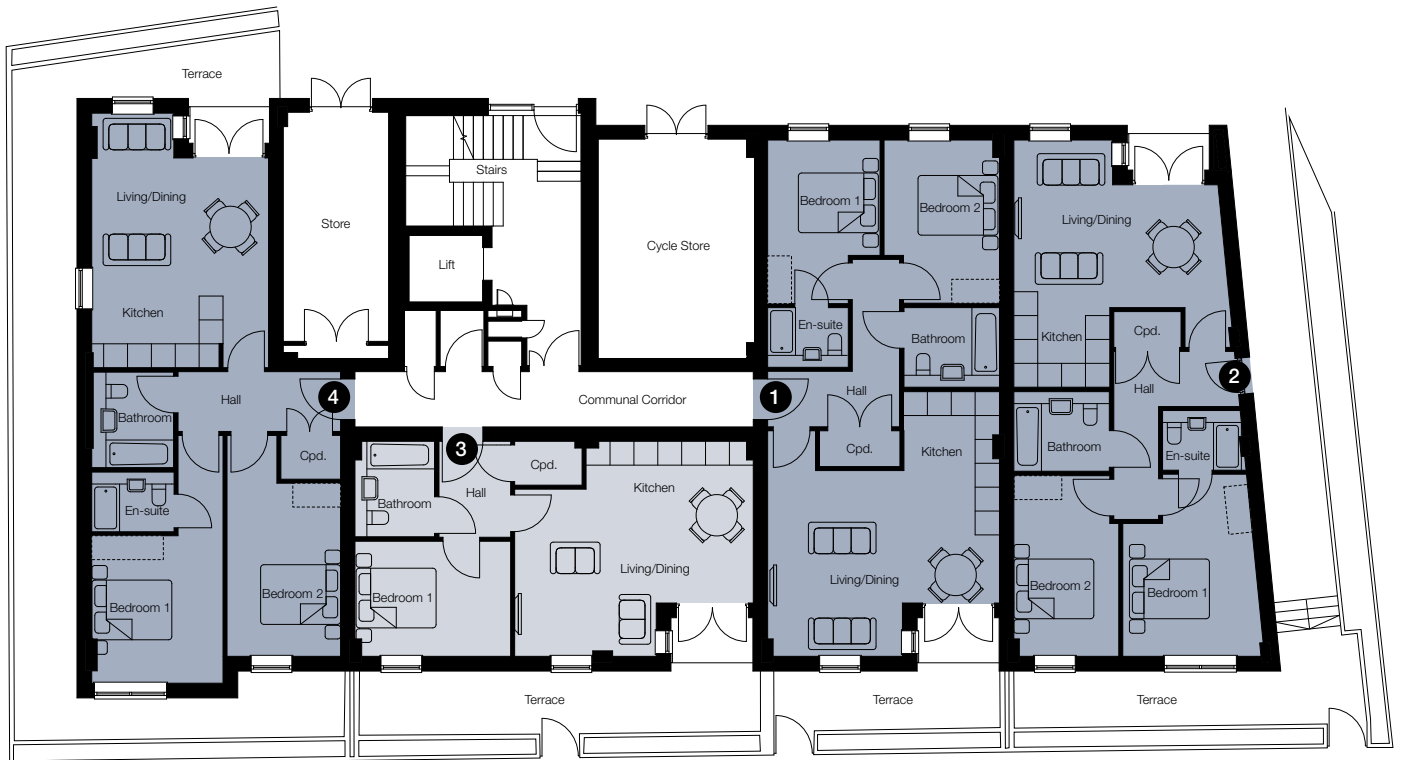
A COLLECTION OF EXCLUSIVE  
1 AND 2 BEDROOM APARTMENTS

# LEWIS COURT AT THE LIBRARY

## FIRST, SECOND AND THIRD FLOORS



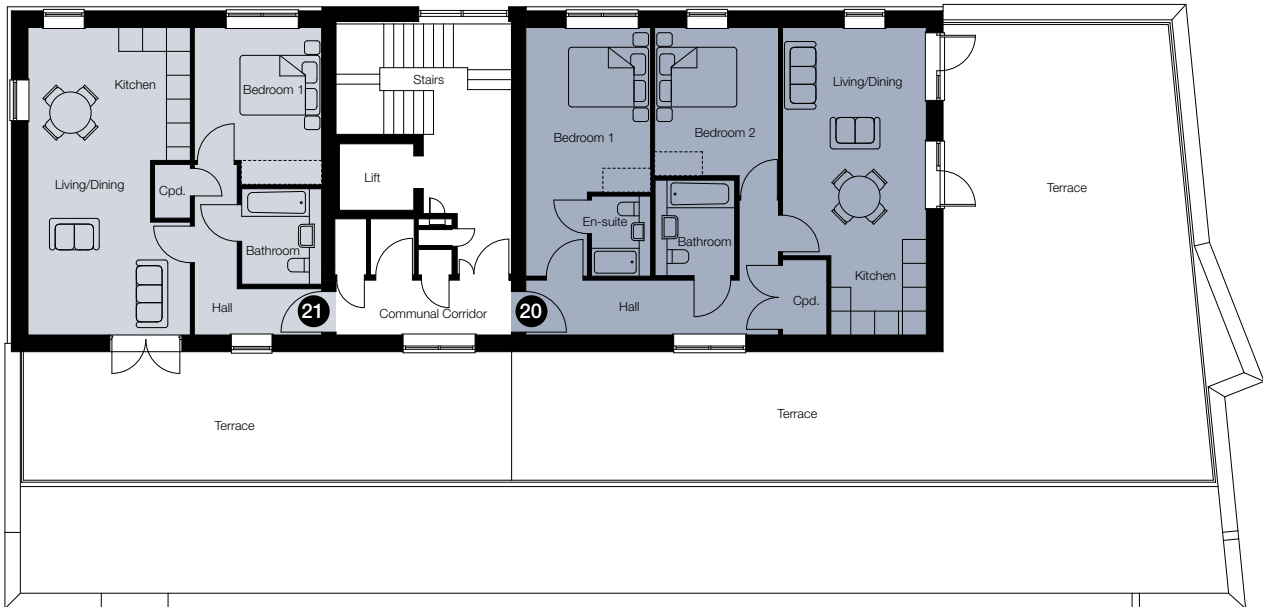
## GROUND FLOOR



Apartment layouts provide approximate measurements only. Dimensions, which are taken from the indicated points of measurement are for guidance only and are not intended to be used for carpet sizes, appliance space or items of furniture. Total areas are provided as gross internal areas under the latest RICS measuring practice. All measurements and areas may vary within a tolerance of 5%. Kitchen layouts are indicative only and are subject to change.

- 1 bedroom apartments
- 2 bedroom apartments

# FOURTH FLOOR



## PLOT 1

<b>Total Area</b>	72.9 sq m	785 sq ft
Living/Dining/Kitchen	5826mm x 5668mm	19'2" x 18'7"
Bedroom 1	4112mm x 2825mm	13'6" x 9'4"
Bedroom 2	4112mm x 2732mm	13'6" x 9'0"

## PLOT 2

<b>Total Area</b>	70.7 sq m	761 sq ft
Living/Dining/Kitchen	6212mm x 5433mm	20'4" x 17'10"
Bedroom 1	4600mm x 3474mm	15'0" x 11'5"
Bedroom 2	4539mm x 2638mm	14'10" x 8'8"

## PLOT 3

<b>Total Area</b>	51.4 sq m	553 sq ft
Living/Dining/Kitchen	5997mm x 4201mm	19'8" x 13'10"
Bedroom 1	3914mm x 2892mm	12'10" x 9'6"

## PLOT 4

<b>Total Area</b>	73.3 sq m	789 sq ft
Living/Dining/Kitchen	6396mm x 4407mm	21'0" x 14'6"
Bedroom 1	3705mm x 3300mm	12'2" x 10'10"
Bedroom 2	4351mm x 2855mm	14'4" x 9'4"

## Plots 5, 10 and 15

<b>Total Area</b>	70.9 sq m	763 sq ft
Living/Dining/Kitchen	6138mm x 5457mm	20'2" x 18'0"
Bedroom 1	4027mm x 3158mm	13'2" x 10'4"
Bedroom 2	3561mm x 2932mm	11'8" x 9'8"

## Plots 6, 11 and 16

<b>Total Area</b>	80.1 sq m	862 sq ft
Living/Dining/Kitchen	7673mm x 4300mm	25'2" x 14'2"
Bedroom 1	5378mm x 3353mm	17'8" x 11'0"
Bedroom 2	3122mm x 3063mm	10'3" x 10'0"

## Plots 7, 12 and 17

<b>Total Area</b>	51.5 sq m	554 sq ft
Living/Dining/Kitchen	6082mm x 5780mm	20'0" x 19'0"
Bedroom 1	3831mm x 3401mm	12'6" x 11'2"

## Plots 8, 13 and 18

<b>Total Area</b>	71.3 sq m	768 sq ft
Living/Dining/Kitchen	6082mm x 5400mm	20'0" x 17'8"
Bedroom 1	3964mm x 3817mm	13'0" x 12'6"
Bedroom 2	3017mm x 2764mm	9'10" x 9'0"

## Plots 9, 14 and 19

<b>Total Area</b>	50.7 sq m	546 sq ft
Living/Dining/Kitchen	6757mm x 4278mm	22'2" x 14'0"
Bedroom 1	3626mm x 3143mm	11'10" x 10'4"

## Plot 20

<b>Total Area</b>	77.6 sq m	837 sq ft
Living/Dining/Kitchen	7728mm x 3615mm	25'4" x 11'10"
Bedroom 1	4137mm x 3137mm	13'8" x 10'0"
Bedroom 2	3725mm x 3115mm	12'2" x 10'3"

## Plot 21

<b>Total Area</b>	57 sq m	614 sq ft
Living/Dining/Kitchen	7728mm x 4081mm	25'4" x 13'4"
Bedroom 1	3341mm x 3200mm	11'0" x 10'6"

[WWW.THELIBRARY-WILLESDEN.CO.UK](http://WWW.THELIBRARY-WILLESDEN.CO.UK)