



THE RITZ-CARLTON RESIDENCES®  
SINGAPORE, CAIRNHILL



Rare opportunity for freehold property  
Located in the most prime District 9  
First Ritz-Carlton Residence in Asia



The glitz and glamour of Orchard Road is less than 10 minutes walk away, providing a myriad of vibrant shopping, dining and entertainment venues at your doorstep.



THE RITZ-CARLTON RESIDENCES®  
SINGAPORE, CAIRNHILL



View from 5<sup>th</sup> Floor



THE RITZ-CARLTON RESIDENCES®  
SINGAPORE, CAIRNHILL



View from 14<sup>th</sup> Floor



THE RITZ-CARLTON RESIDENCES®  
SINGAPORE, CAIRNHILL

The Ritz-Carlton Residences sets a new standard in luxury living with its sublime finishes, exceptional amenities and the legendary service excellence of The Ritz-Carlton Hotel.

Privileges as a Resident :

- Director of Services available for consultation
- Sommelier and barista
- Day-maid
- Valet Parking
- Concierge

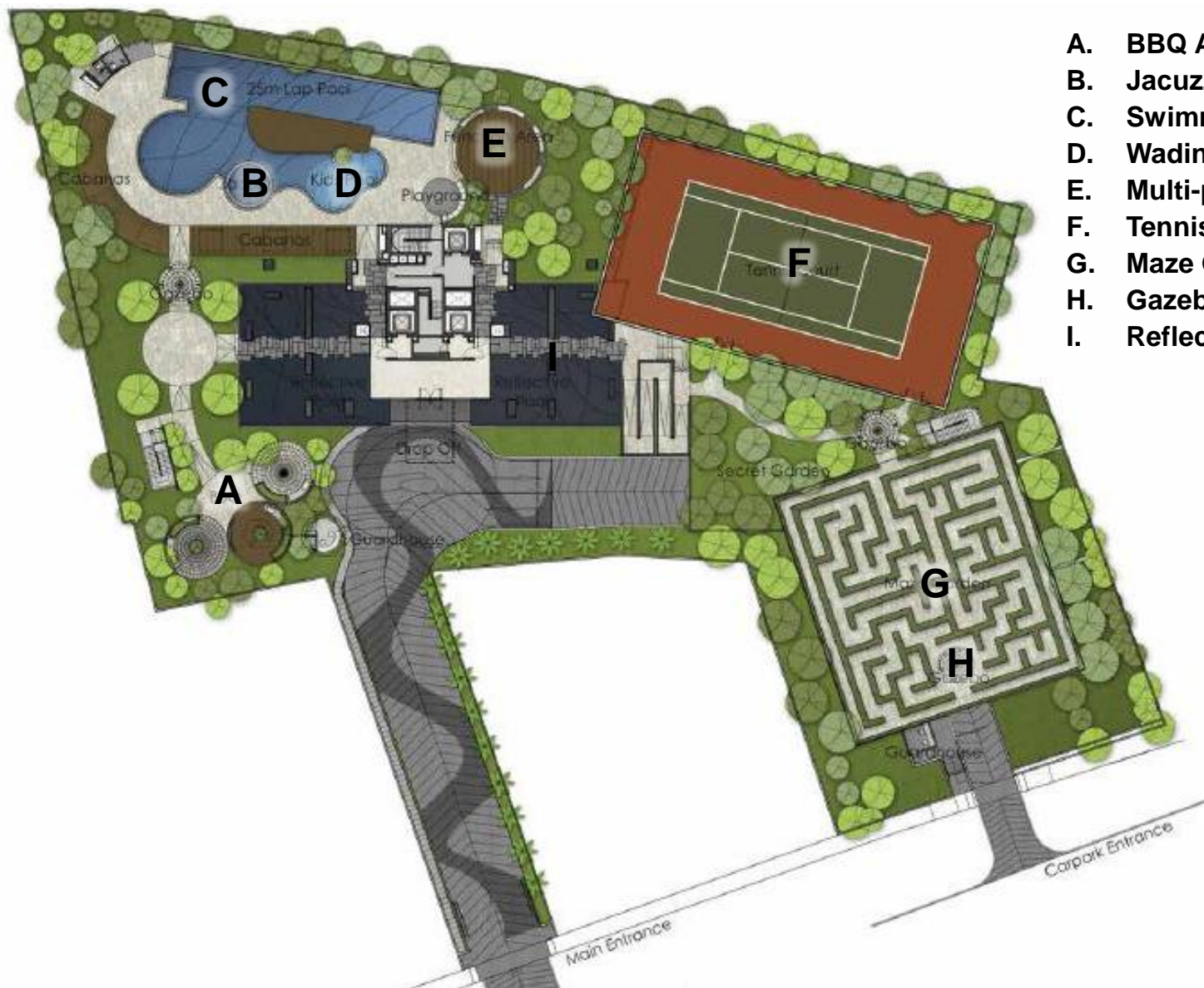
A-la-carte services available to Residents :

- Residence house-keeping
- Laundry
- Baby-sitting
- Limousine
- Catering
- Events management





Address	No. 65 Cairnhill Road		
District	9		
Site Area	59,000 sq ft (approx)		
Elevation	36 Levels		
Tenure	Freehold		
Total Units	58		
Unit Mix	3 BR	2,831 sq ft	Level 5 – 23
	4 BR	3,057 sq ft	Level 25– 33
	Junior PH	3,574 sq ft	Level 34
	Superior PH	6,501 sq ft	Level 35, 36 & lower roof
Facilities	Indoor (3 sky terraces) & outdoor facilities		
Architect	Eco-Id Design Consultancy Pte Ltd		
Expected Date of TOP	May 2013		
Estimated Maintenance Fee	Approx. S\$2,500 / month		



- A. BBQ Area
- B. Jacuzzi
- C. Swimming Pool – 25m
- D. Wading Pool
- E. Multi-purpose Entertainment Area
- F. Tennis Court
- G. Maze Garden
- H. Gazebo
- I. Reflective Pool



# Lobby



THE RITZ-CARLTON RESIDENCES®  
SINGAPORE, CAIRNHILL



- 4m ceiling height
- Private lift lobby for every unit
- 24 hour state-of-the-art security system:
  - Biometric entrance
  - Audio-video intercom
  - Full ERP car-park
  - Wireless guard tour
  - Digital CCTV with Artificial Intelligence
- 3 Basement car-park levels (134 lots)

# Sky Terrace - Level 4



THE RITZ-CARLTON RESIDENCES®  
SINGAPORE, CAIRNHILL



- Lap pool : 34m
- Steam room

- Hydro pool
- Yoga deck

- Gym

# Sky Terrace - Level 14



THE RITZ-CARLTON RESIDENCES®  
SINGAPORE, CAIRNHILL



- Library
- Games area
- Café

# Sky Terrace - Level 24



THE RITZ-CARLTON RESIDENCES®  
SINGAPORE, CAIRNHILL



- Function room
- Gourmet kitchen
- Wine cellar

# Living Room



THE RITZ-CARLTON RESIDENCES®  
SINGAPORE, CAIRNHILL



- High ceiling (3.1m / 10 ft)
- Moca crème hone finished limestone flooring and bay windows
- Lutron Home Works for control of lighting, air-conditioning and water heater

# Dining Room



THE RITZ-CARLTON RESIDENCES®  
SINGAPORE, CAIRNHILL



- Moca crème honed finished limestone flooring and bay windows

# Dining Room / Kitchen



THE RITZ-CARLTON RESIDENCES®  
SINGAPORE, CAIRNHILL



- One way reflective glass door

# Kitchen



THE RITZ-CARLTON RESIDENCES®  
SINGAPORE, CAIRNHILL



- Poggenpohl kitchen system with granite counter-top
- Sub-zero refrigerator
- Miele kitchen appliances



# Bedrooms



THE RITZ-CARLTON RESIDENCES®  
SINGAPORE, CAIRNHILL



- High ceiling (3.1m / 10 ft)
- White oak timber strips for flooring (herringbone pattern)
- B&B Italia built-in wardrobes with dehumidifier (solid white oak doors)

# Bathrooms



THE RITZ-CARLTON RESIDENCES®  
SINGAPORE, CAIRNHILL



## **Powder room**

- Moca crème honed finished limestone (flooring)
- Onyx vanity top
- Toto wc with washlets with bidet functions

## **Master bathroom**

- Palisandro classico vanity top (flooring & wall)
- Thasso white marble master shower wall
- Ann Sacks – Selvaggio feature wall
- Toto wc with washlets with bidet functions
- Dornbracht sanitary fittings

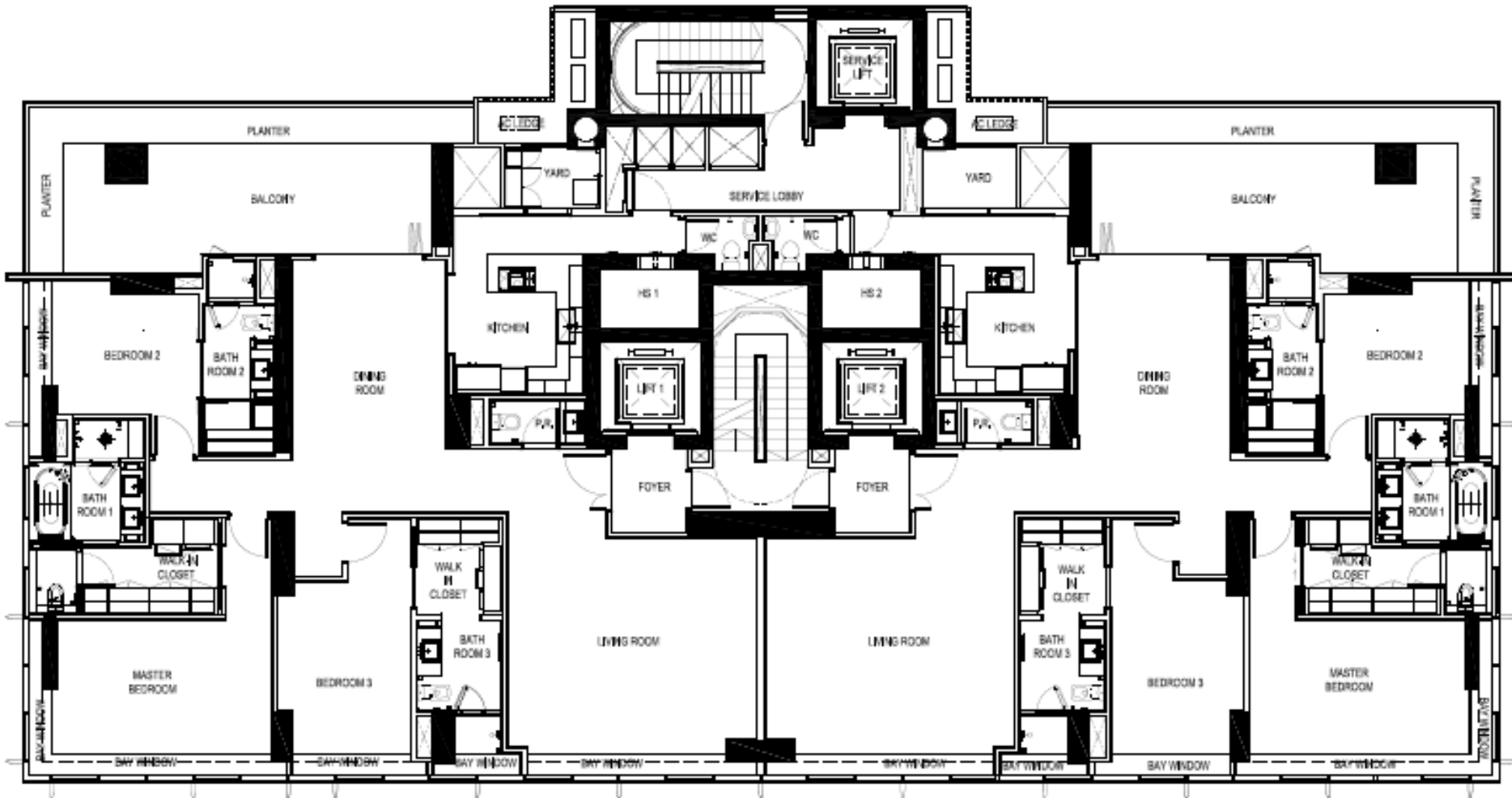
## **Other bathrooms**

- Moca crème honed finished limestone
- Silver dragon polished marble vanity top
- Kohler cistern and bath accessories

# LAYOUT PLAN – Typical 3 Bedroom (2,831 sq ft)



THE RITZ-CARLTON RESIDENCES®  
SINGAPORE, CAIRNHILL



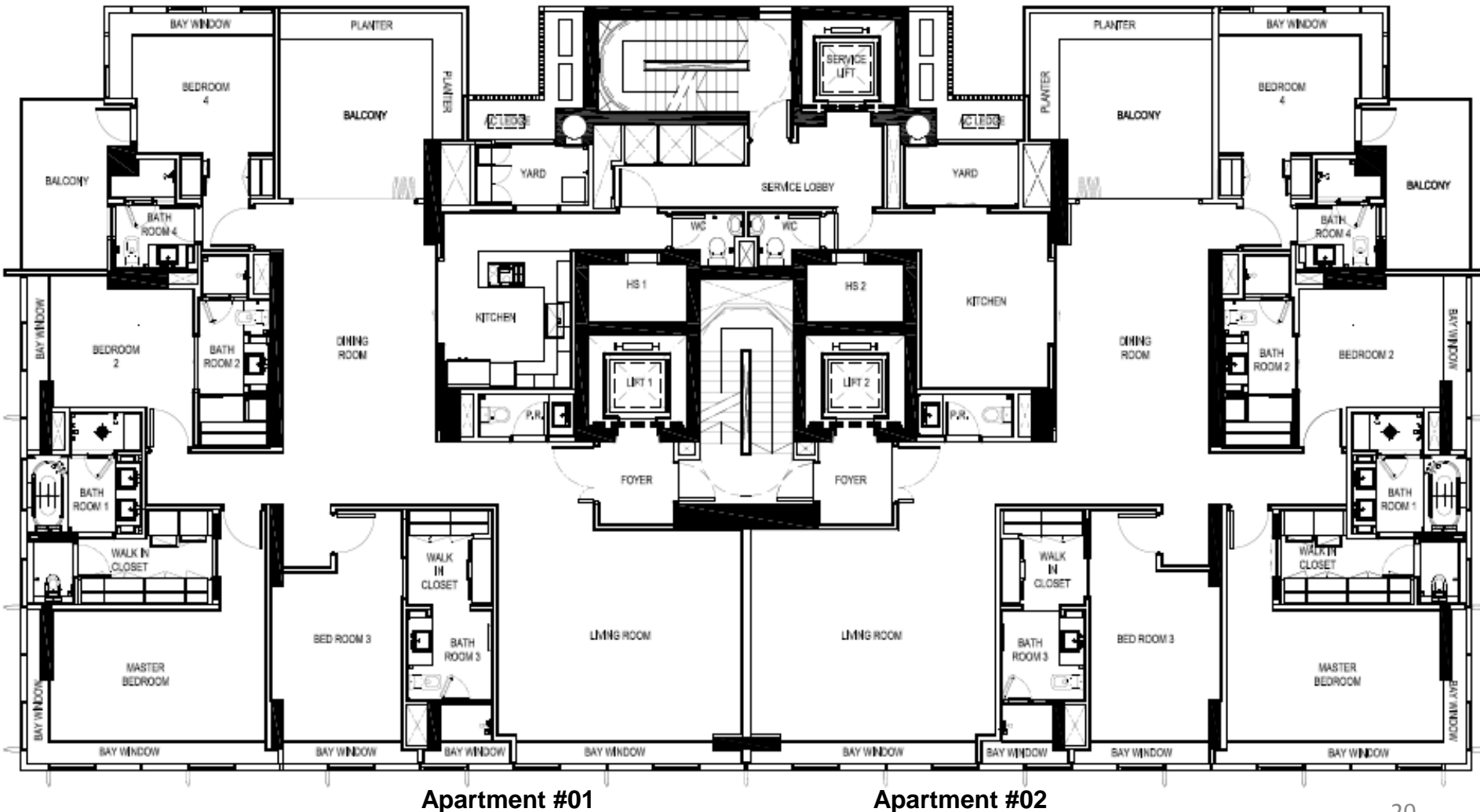
Apartment #01

Apartment #02

# LAYOUT PLAN – Typical 4 Bedroom (3,057 sq ft)



THE RITZ-CARLTON RESIDENCES®  
SINGAPORE, CAIRNHILL

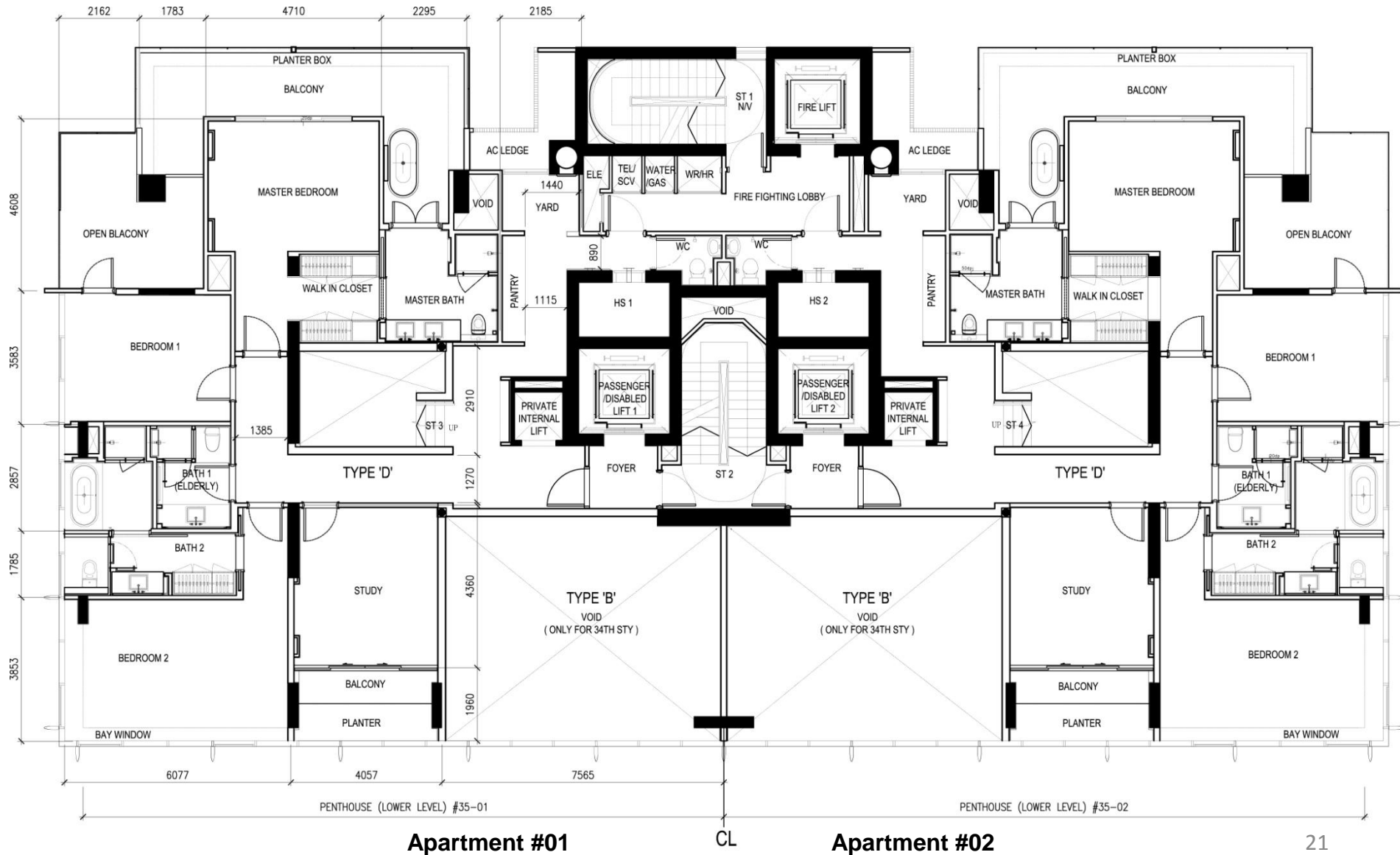


Double volume ceiling height in living room for apartments on 34<sup>th</sup> storey

# LAYOUT PLAN – Penthouse Level 35 (2,551 sq ft)



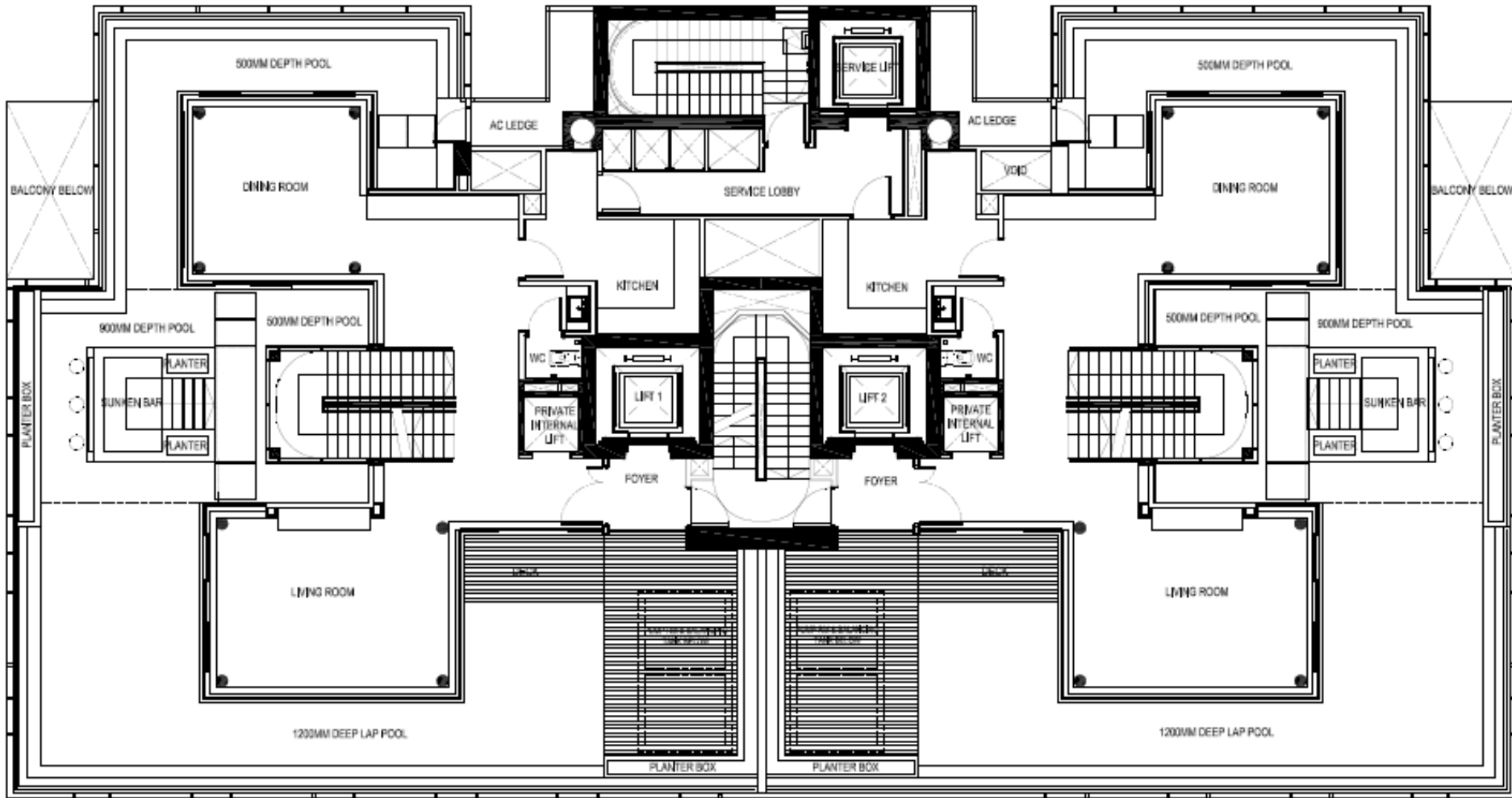
THE RITZ-CARLTON RESIDENCES®  
SINGAPORE, CAIRNHILL



# LAYOUT PLAN – Penthouse Level 36 (2,852 sq ft)



THE RITZ-CARLTON RESIDENCES®  
SINGAPORE, CAIRNHILL



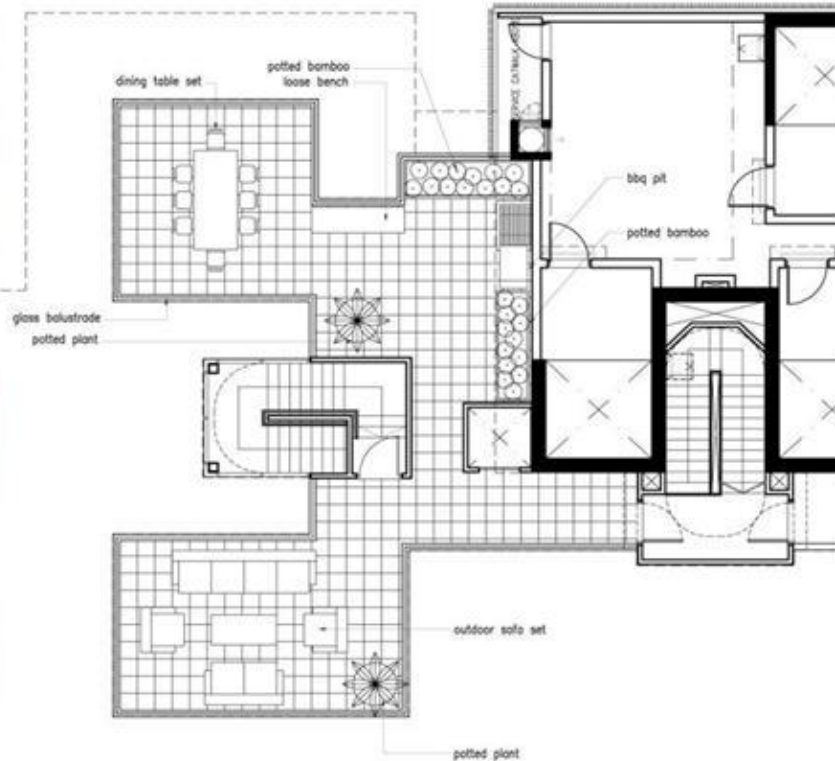
Apartment #01

Apartment #02

# LAYOUT PLAN – Penthouse Lower Roof (1,098 sq ft)



THE RITZ-CARLTON RESIDENCES®  
SINGAPORE, CAIRNHILL



*The furniture / BBQ pits are only artist's impressions of how residents may fit the space. These are not provided by the developer.*

# Architect



THE RITZ-CARLTON RESIDENCES®  
SINGAPORE, CAIRNHILL



Established in Singapore in 1996, Eco-id Design is a multi-disciplinary firm engaged in master planning, architecture and interior design projects regionally.

Its recent notable works include the award-winning Metropolitan Hotel in Bangkok and W's first resort hotel (Starwood Group) in the Maldives. It is also working on a Conrad Hotel in Koh Samui, Thailand and a luxury residential lakeside development (Hyde Park) in Bangkok.





Montigo Resorts, Batam, Indonesia



Hamilton Scotts

KOP Properties is the real estate investment and management arm of the KOP Group. KOP Properties develops residential and commercial properties, as well as hotels and resorts. Through its luxury brand Hayden Properties, it develops notable projects such as the super luxurious The Ritz-Carlton Residences ([www.rcresidences.com.sg](http://www.rcresidences.com.sg)), which is the first in Asia, and Hamilton Scotts ([www.hamiltonscotts.com](http://www.hamiltonscotts.com)), the world's tallest en suite elevated car porch residence. Beyond establishing a distinctive imprint in Singapore, KOP Properties also has interests in Asia's promising economies, including the luxurious Montigo Resorts ([www.montigoresorts.com](http://www.montigoresorts.com)) featuring beach-front Villas and Residences for sale.



**KOP GROUP Pte Ltd** (“KOP”) is a fully integrated real asset investment, development and management company headquartered in Singapore. KOP’s businesses are founded in real estate and hospitality development, lifestyle services, as well as private equity and capital management.

KOP’s dynamic portfolio includes **KOP Properties**, which through its luxury brand Hayden Properties, develops notable projects such as super luxurious properties The Ritz-Carlton Residences, Hamilton Scotts and Montigo Resorts; **Aqua Voyage**, a yacht management company that specializes in bespoke travel including luxury charters and cruises; as well as **Franklyn Hotels & Resorts**, an international hospitality management and services arm. KOP also holds the exclusive distributorship rights for Princess yachts throughout Singapore and China. \*



KOP has received wide recognition globally for its bold vision, its exciting business concepts and services, partnerships with internationally acclaimed brands, and track record in generating exponential value for each of its investment projects.

KOP is helmed by a creative professional team with international experience in all aspects of real estate and hospitality development, as well as asset and private equity management.

*\*Except HK SAR and Zhejiang province*



THE RITZ-CARLTON RESIDENCES®  
SINGAPORE, CAIRNHILL

# For ownership and enquiries please contact

**Nellie Neo**

Associate Director, Sales & Marketing

DID : +65 6309-7566

Email : nellie.neo@kopgroup.com

**Dylan Yip**

Manager, Sales & Marketing

DID : +65 6505-9378

Email : dylan.yip@kopgroup.com

**Karen Koh**

Assistant Manager, Executive Office

DID : +65 6505-9372

Email : karen.koh@kopgroup.com

**[www.rcresidences.com.sg](http://www.rcresidences.com.sg)**

**Disclaimer:**

The information contained herein and in all our marketing materials, including our print materials, website, video, models and plans (collectively the "Marketing Materials") is subject to change and should not be taken to constitute any part of any offer or contract. While every reasonable care has been taken in providing this information, the Developer and its Agent cannot be held responsible for any inaccuracies or changes. Illustrations contained in the Marketing Materials are the artist's impression and serve only to give an approximate idea of the project. All plans are subject to amendments as may be approved by the relevant authorities. Floor areas given are approximate measurements and subject to final survey.