



THE SCOTTS TOWER

TYPE
A1

#03-06
TO
#18-06

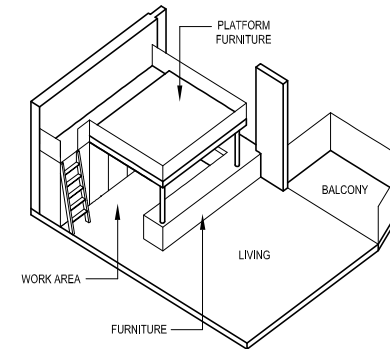
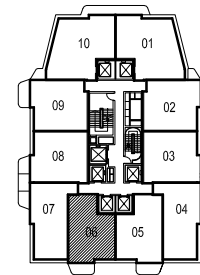
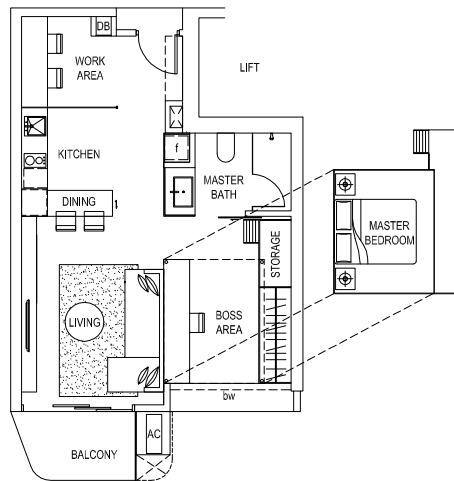
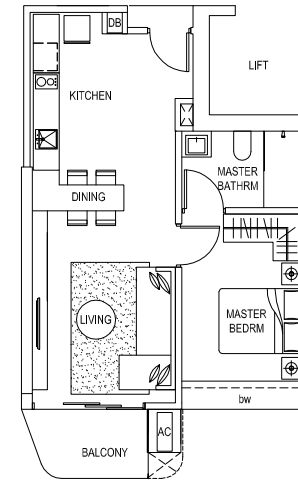
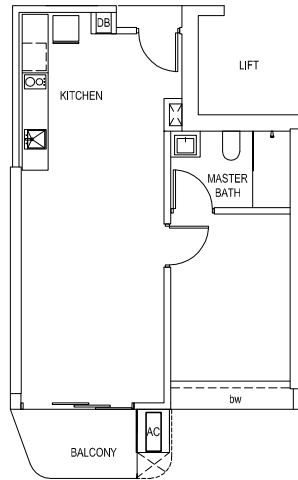
BP NO.: A1604-00165-2005-BP01

DATED: 30/08/2007

BP NO.: A1604-00165-2005-BP02

DATED: 25/11/2011

TYPE
A1



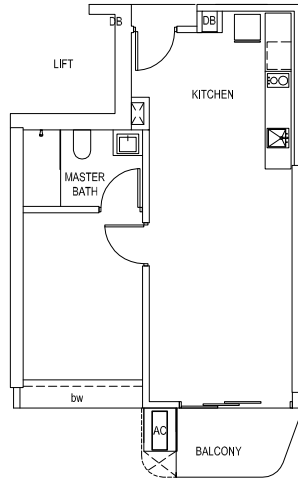
 **KEYPLAN**
(NOT TO SCALE)

THE ABOVE PLANS ARE SUBJECT TO ANY AMENDMENTS AS MAYBE APPROVED BY THE RELEVANT AUTHORITIES.



THE SCOTTS TOWER

TYPE #03-05
TO #18-05
A1m



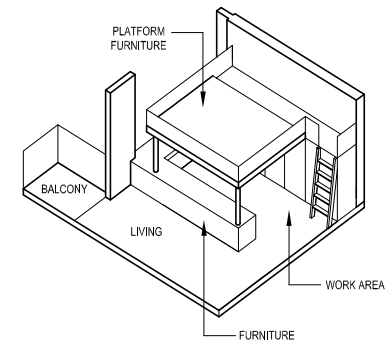
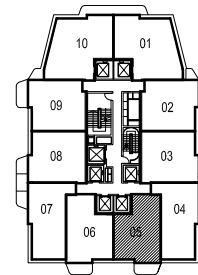
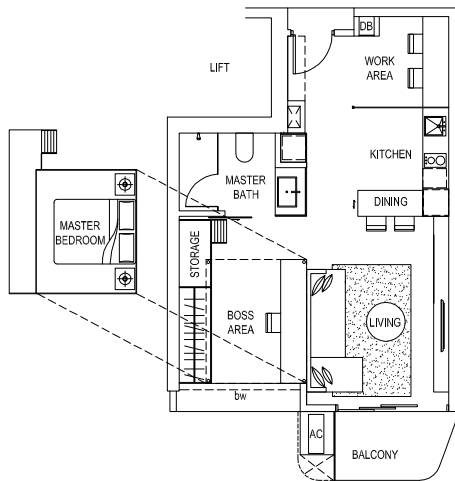
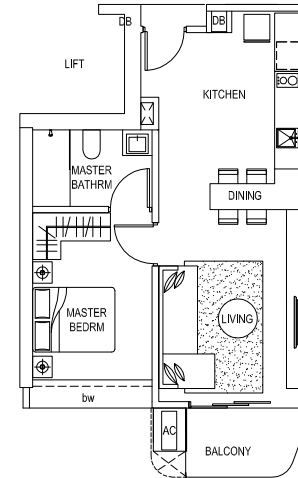
TYPE
A1m

BP NO.: A1604-00165-2005-BP01

DATED: 30/08/2007

BP NO.: A1604-00165-2005-BP02

DATED: 25/11/2011



KEYPLAN
(NOT TO SCALE)



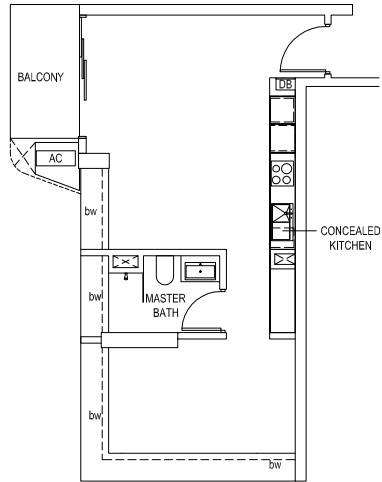
THE ABOVE PLANS ARE SUBJECT TO ANY AMENDMENTS AS MAYBE APPROVED BY THE RELEVANT AUTHORITIES.



THE SCOTTS TOWER

TYPE
A2

#03-07
TO
#18-07



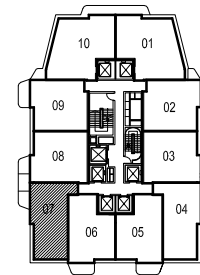
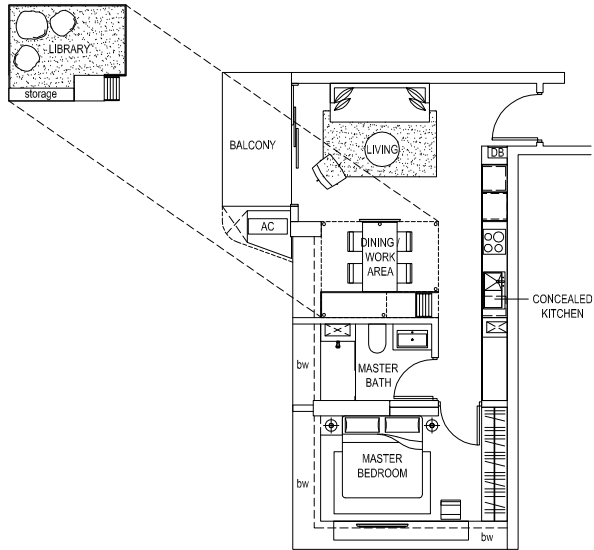
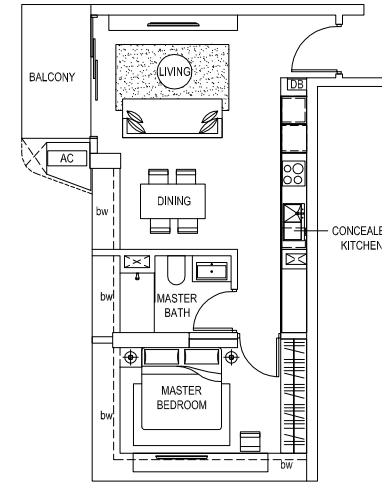
BP NO.: A1604-00165-2005-BP01

DATED: 30/08/2007

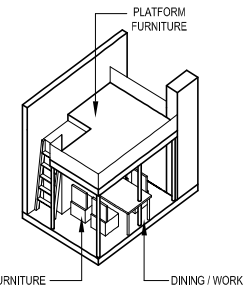
TYPE
A2

BP NO.: A1604-00165-2005-BP02

DATED: 25/11/2011



KEYPLAN
(NOT TO SCALE)



THE ABOVE PLANS ARE SUBJECT TO ANY AMENDMENTS AS MAYBE APPROVED BY THE RELEVANT AUTHORITIES.



THE SCOTTS TOWER

TYPE #03-04
TO #18-04
A2m

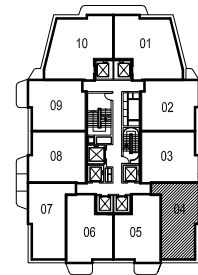
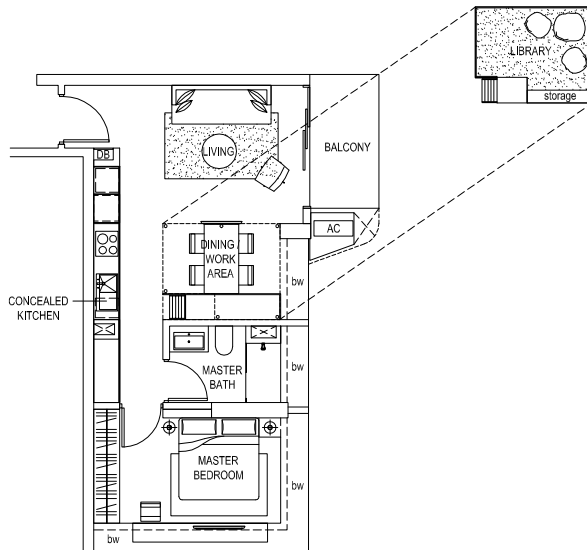
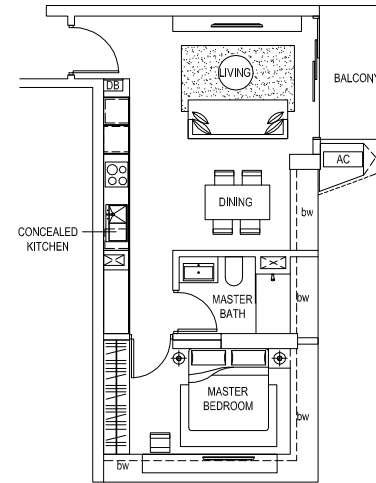
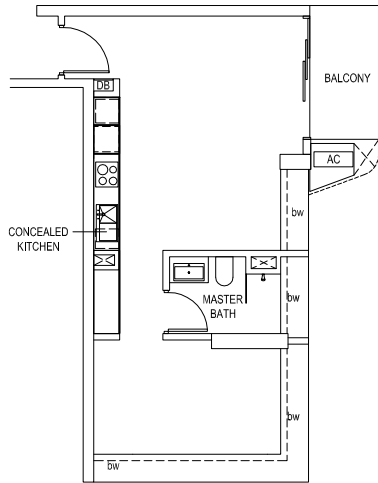
BP NO.: A1604-00165-2005-BP01

DATED: 30/08/2007

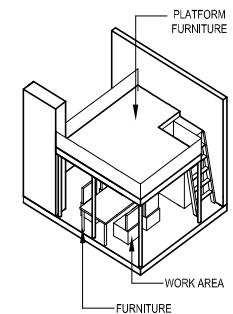
BP NO.: A1604-00165-2005-BP02

DATED: 25/11/2011

TYPE
A2m



KEYPLAN
(NOT TO SCALE)



THE ABOVE PLANS ARE SUBJECT TO ANY AMENDMENTS AS MAYBE APPROVED BY THE RELEVANT AUTHORITIES.



THE SCOTTS TOWER

TYPE
A3

#03-08
TO
#18-08

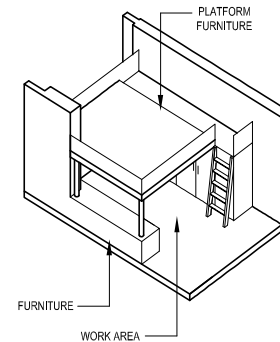
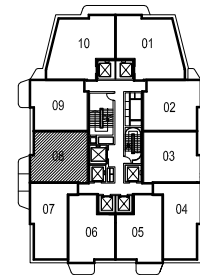
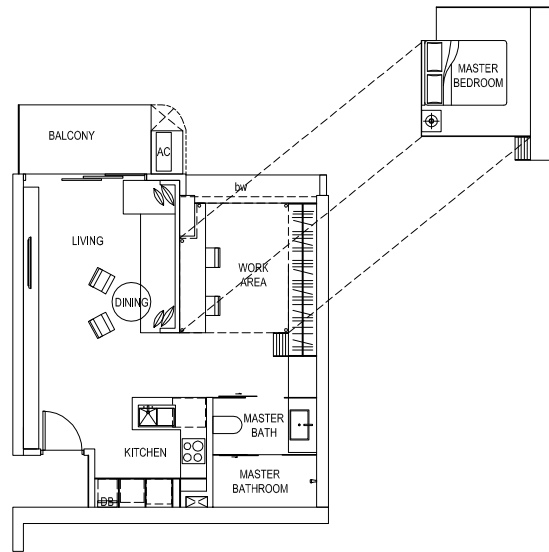
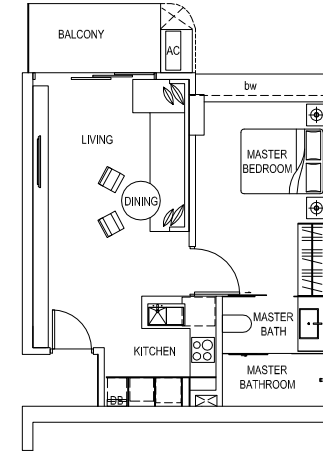
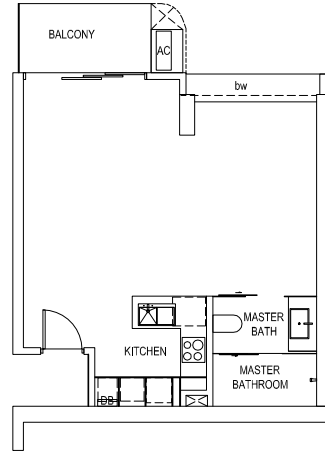
TYPE
A3

BP NO.: A1604-00165-2005-BP01

DATED: 30/08/2007

BP NO.: A1604-00165-2005-BP02

DATED: 25/11/2011



 **KEYPLAN**
(NOT TO SCALE)

THE ABOVE PLANS ARE SUBJECT TO ANY AMENDMENTS AS MAYBE APPROVED BY THE RELEVANT AUTHORITIES.



THE SCOTTS TOWER

TYPE #03-03
TO #18-03
A3m

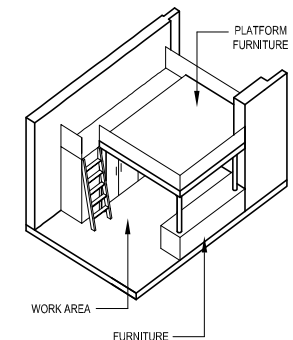
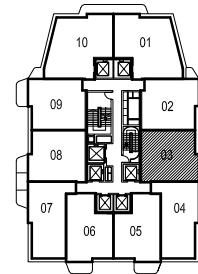
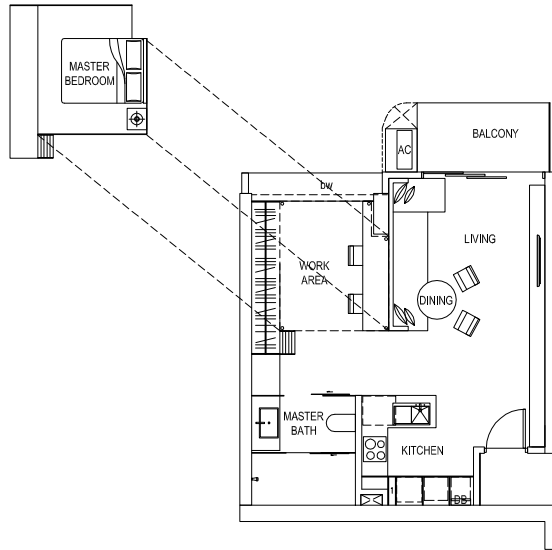
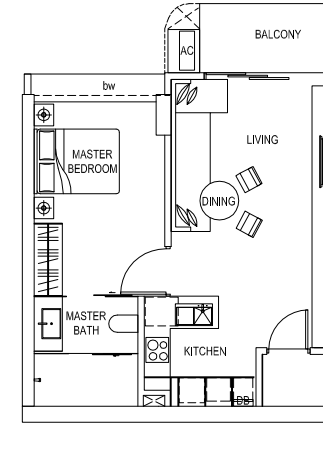
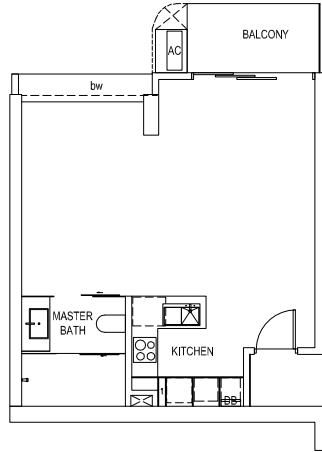
BP NO.: A1604-00165-2005-BP01

DATED: 30/08/2007

BP NO.: A1604-00165-2005-BP02

DATED: 25/11/2011

TYPE
A3m



KEYPLAN
(NOT TO SCALE)

THE ABOVE PLANS ARE SUBJECT TO ANY AMENDMENTS AS MAYBE APPROVED BY THE RELEVANT AUTHORITIES.



THE SCOTTS TOWER

TYPE
A4

#03-09
TO
#18-09

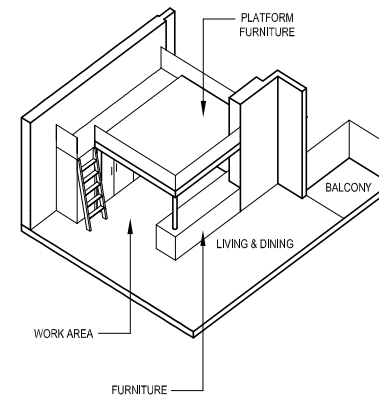
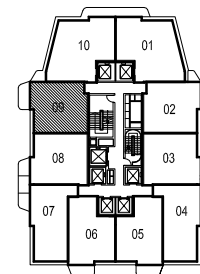
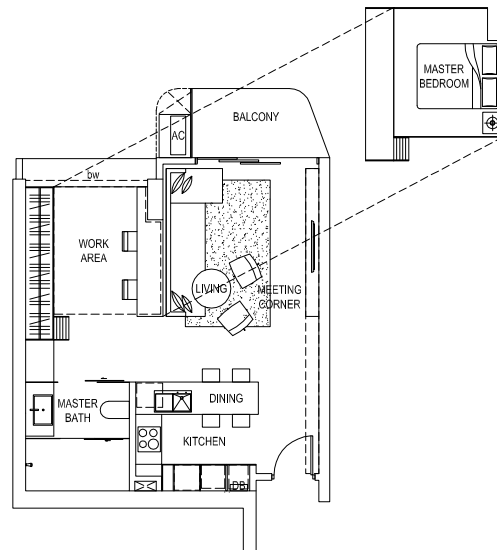
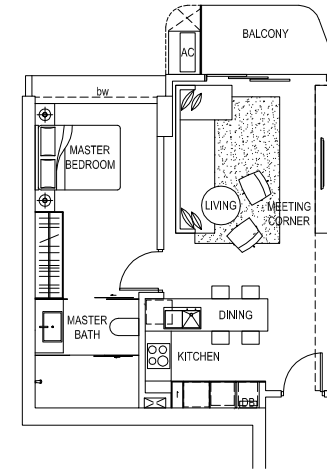
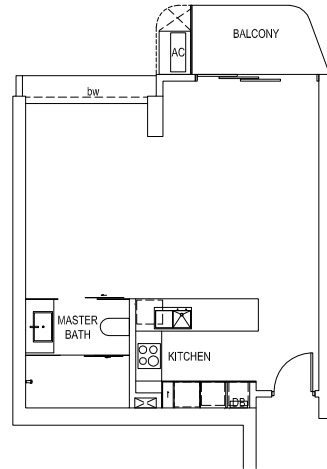
TYPE
A4

BP NO.: A1604-00165-2005-BP01

DATED: 30/08/2007

BP NO.: A1604-00165-2005-BP02

DATED: 25/11/2011



THE ABOVE PLANS ARE SUBJECT TO ANY AMENDMENTS AS MAYBE APPROVED BY THE RELEVANT AUTHORITIES.

KEYPLAN
(NOT TO SCALE)



THE SCOTTS TOWER

TYPE #03-02
TO #18-02
A4m

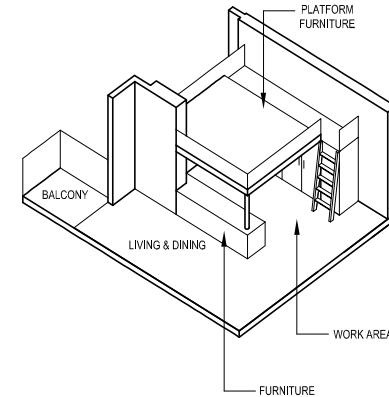
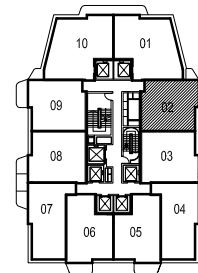
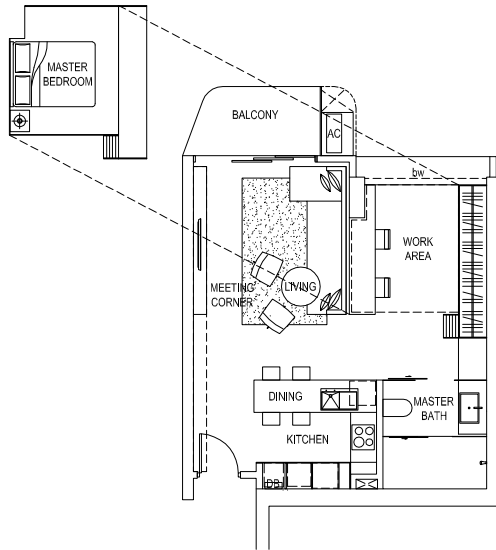
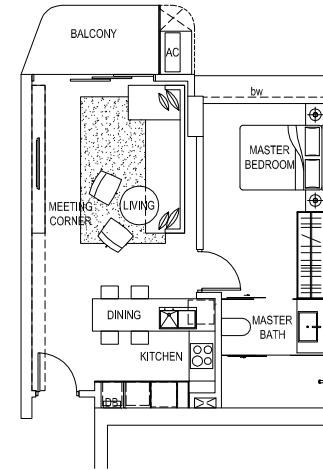
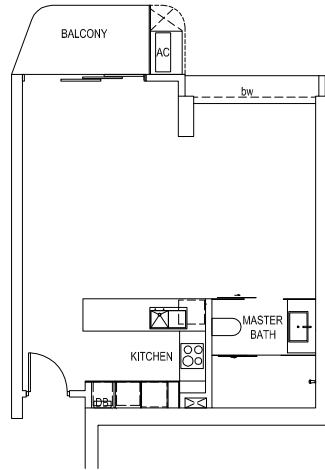
BP NO.: A1604-00165-2005-BP01

DATED: 30/08/2007

BP NO.: A1604-00165-2005-BP02

DATED: 25/11/2011

TYPE
A4m



SCALE 1:175

KEYPLAN
(NOT TO SCALE)

THE ABOVE PLANS ARE SUBJECT TO ANY AMENDMENTS AS MAYBE APPROVED BY THE RELEVANT AUTHORITIES.



THE SCOTTS TOWER

**TYPE
B1**

#03-10
TO
#07-10

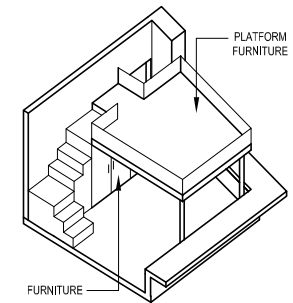
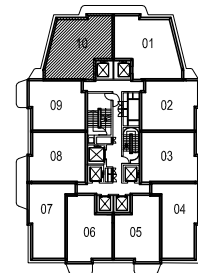
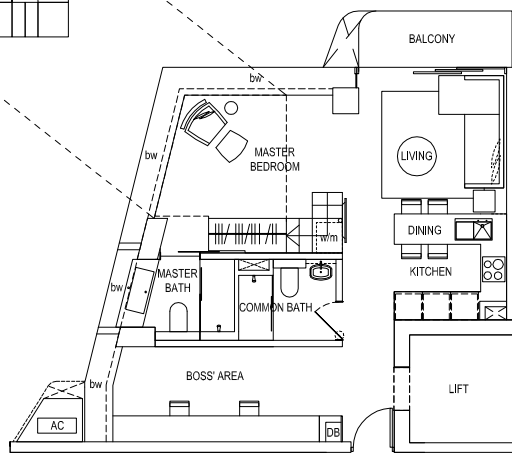
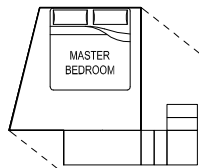
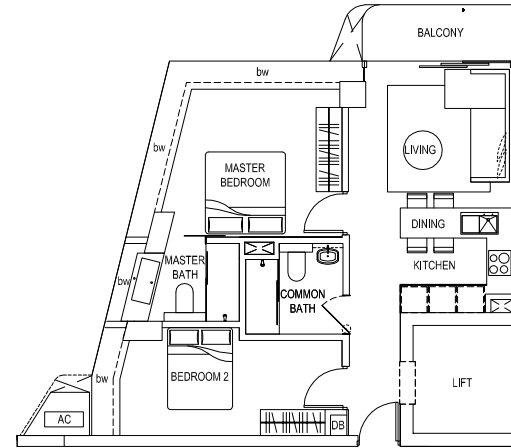
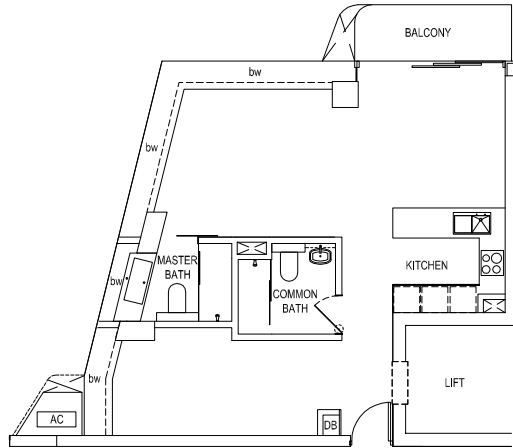
BP NO.: A1604-00165-2005-BP01

DATED: 30/08/2007

BP NO.: A1604-00165-2005-BP02

DATED: 25/11/2011

**TYPE
B1**



KEYPLAN
(NOT TO SCALE)

THE ABOVE PLANS ARE SUBJECT TO ANY AMENDMENTS AS MAYBE APPROVED BY THE RELEVANT AUTHORITIES.



THE SCOTTS TOWER

TYPE #03-01
TO #07-01
B1m

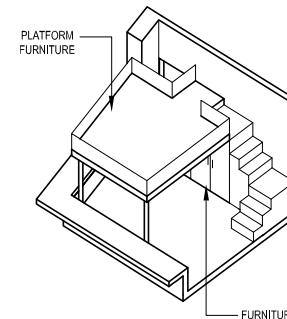
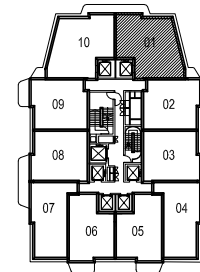
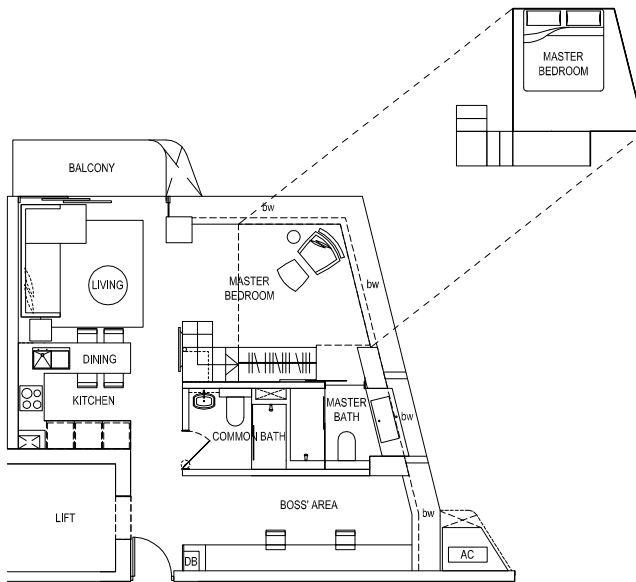
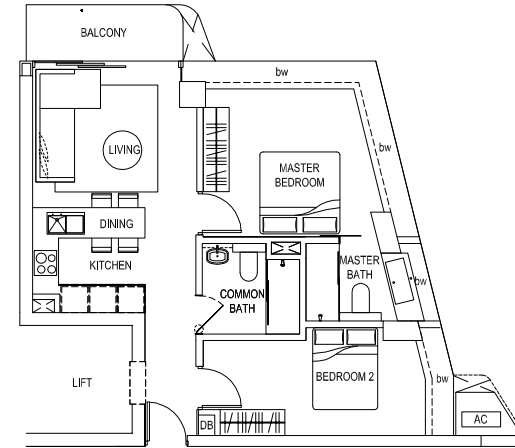
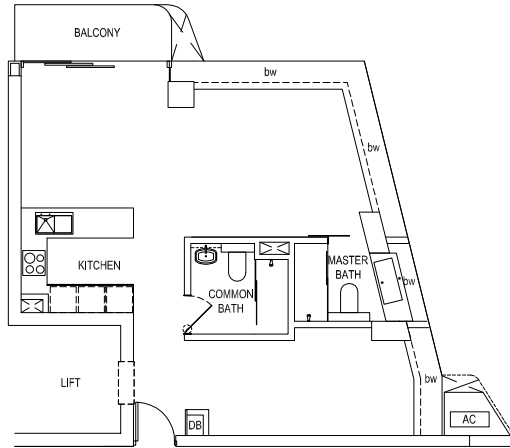
BP NO.: A1604-00165-2005-BP01

DATED: 30/08/2007

BP NO.: A1604-00165-2005-BP02

DATED: 25/11/2011

TYPE
B1m



KEYPLAN
(NOT TO SCALE)

THE ABOVE PLANS ARE SUBJECT TO ANY AMENDMENTS AS MAYBE APPROVED BY THE RELEVANT AUTHORITIES.



THE SCOTTS TOWER

TYPE B2

#08-10
TO
#12-10

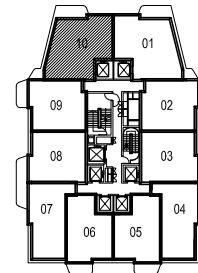
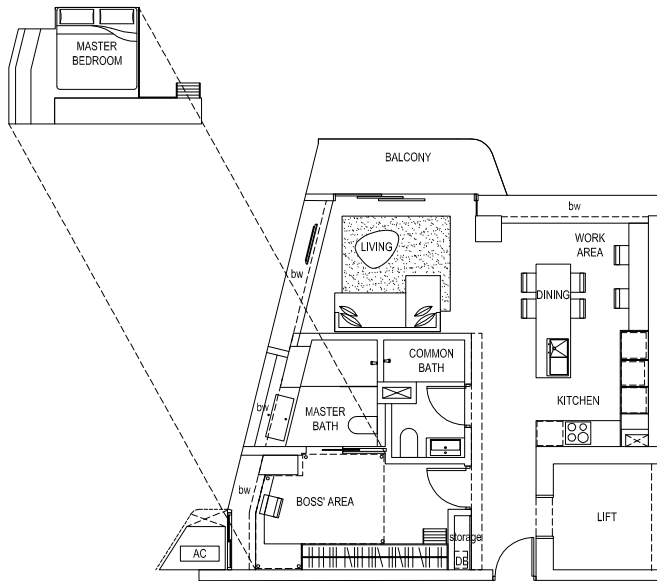
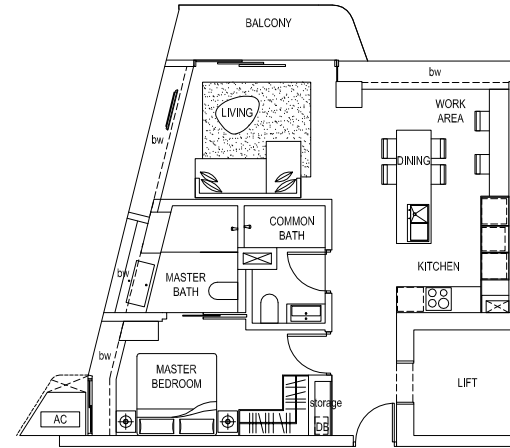
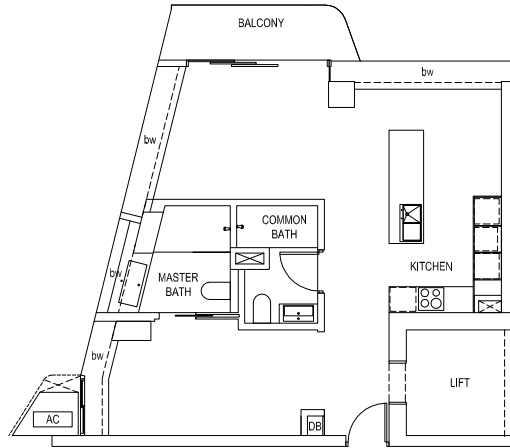
BP NO.: A1604-00165-2005-BP01

DATED: 30/08/2007

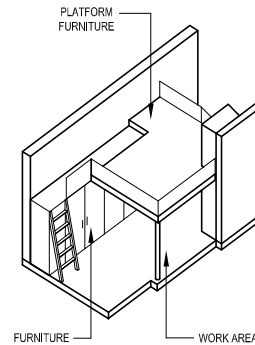
BP NO.: A1604-00165-2005-BP02

DATED: 25/11/2011

TYPE B2



KEYPLAN
(NOT TO SCALE)



THE ABOVE PLANS ARE SUBJECT TO ANY AMENDMENTS AS MAYBE APPROVED BY THE RELEVANT AUTHORITIES.



THE SCOTTS TOWER

TYPE #08-01
TO #12-01
B2m

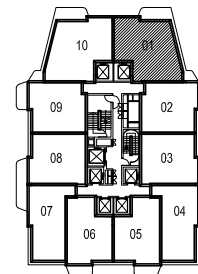
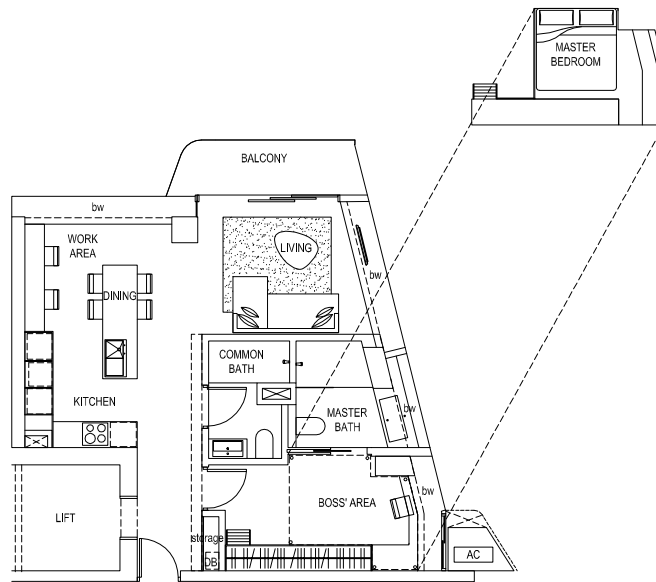
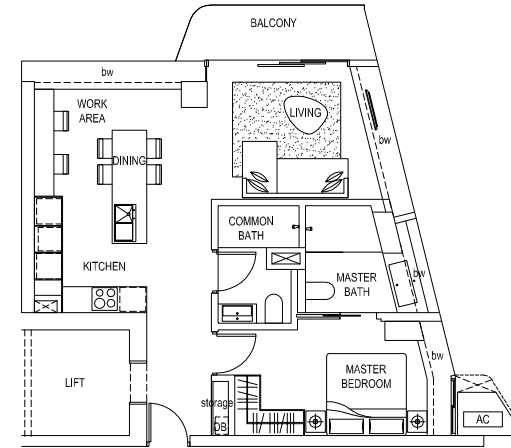
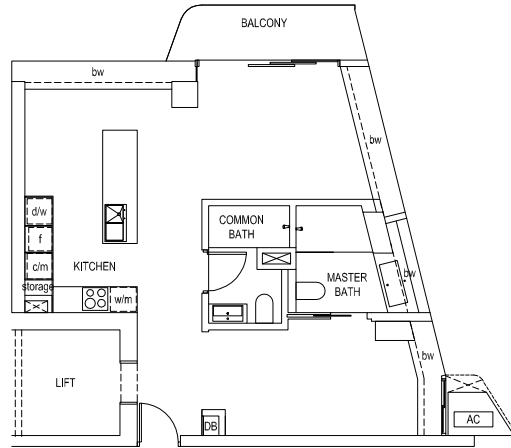
BP NO.: A1604-00165-2005-BP01

DATED: 30/08/2007

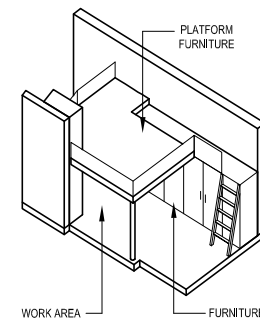
BP NO.: A1604-00165-2005-BP02

DATED: 25/11/2011

TYPE
B2m



KEYPLAN
(NOT TO SCALE)



SCALE 1:175

THE ABOVE PLANS ARE SUBJECT TO ANY AMENDMENTS AS MAYBE APPROVED BY THE RELEVANT AUTHORITIES.



THE SCOTTS TOWER

**TYPE
B3**

#13-10
TO
#18-10

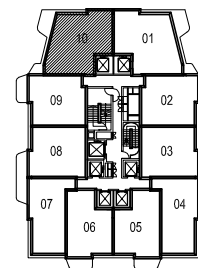
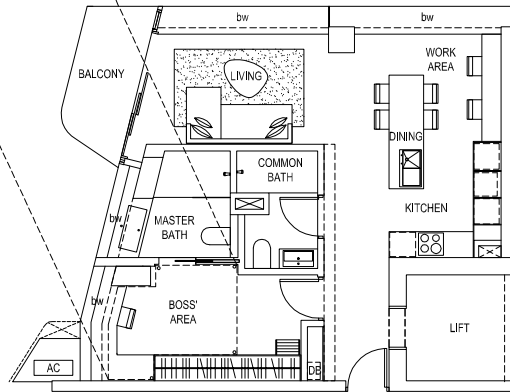
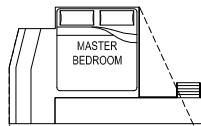
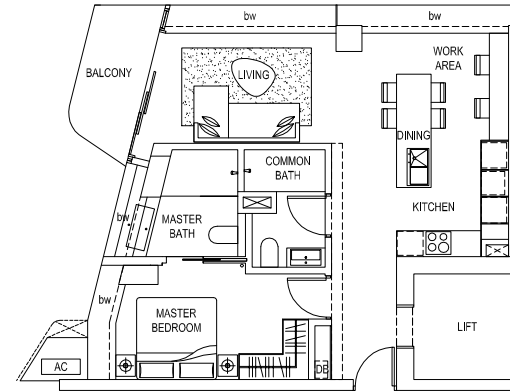
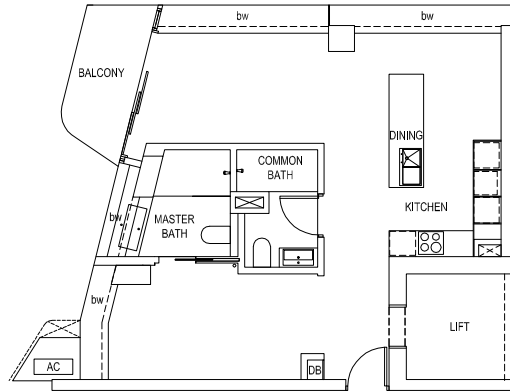
**TYPE
B3**

BP NO.: A1604-00165-2005-BP01

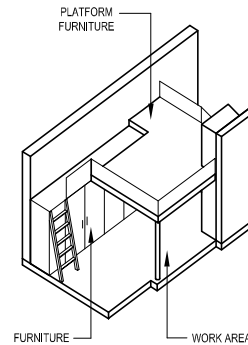
DATED: 30/08/2007

BP NO.: A1604-00165-2005-BP02

DATED: 25/11/2011



KEYPLAN
(NOT TO SCALE)



THE ABOVE PLANS ARE SUBJECT TO ANY AMENDMENTS AS MAYBE APPROVED BY THE RELEVANT AUTHORITIES.



THE SCOTTS TOWER

TYPE #13-01
TO #18-01
B3m

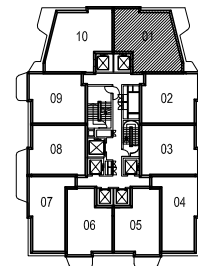
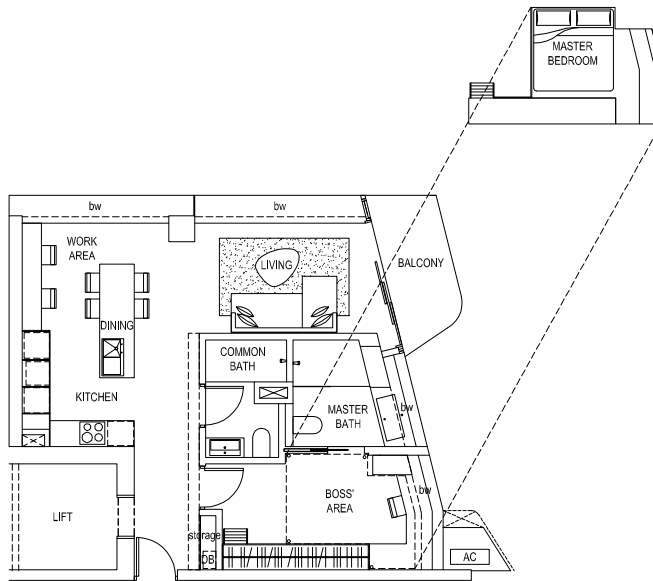
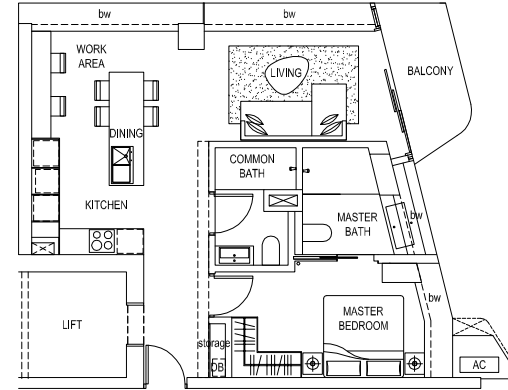
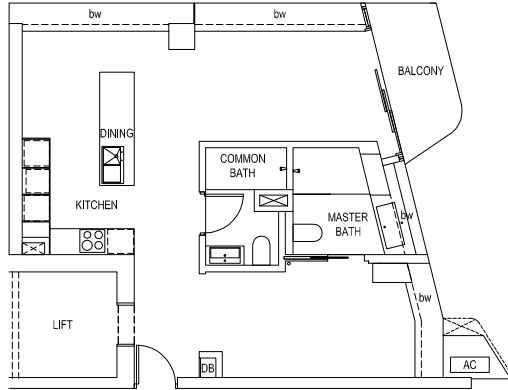
BP NO.: A1604-00165-2005-BP01

DATED: 30/08/2007

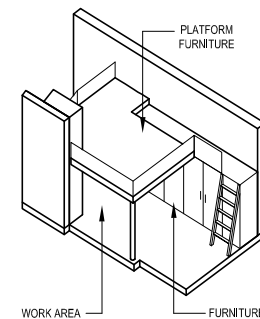
BP NO.: A1604-00165-2005-BP02

DATED: 25/11/2011

TYPE
B3m



KEYPLAN
(NOT TO SCALE)



THE ABOVE PLANS ARE SUBJECT TO ANY AMENDMENTS AS MAYBE APPROVED BY THE RELEVANT AUTHORITIES.



THE SCOTTS TOWER

**TYPE
B4**

#19-05
TO
#24-05

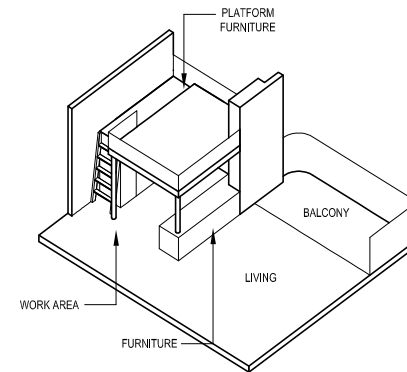
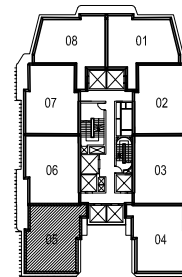
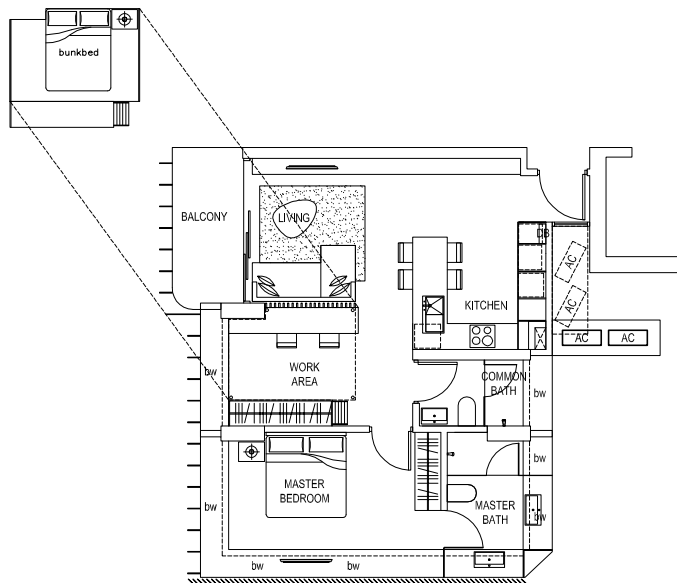
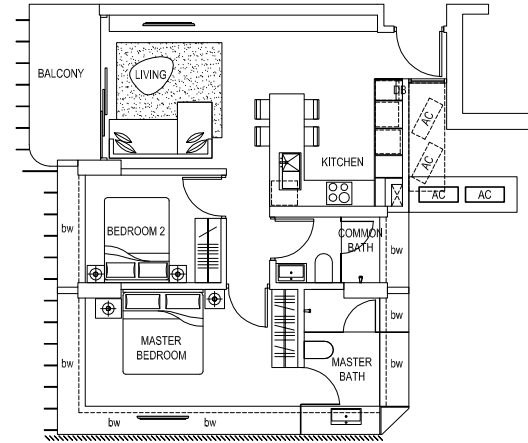
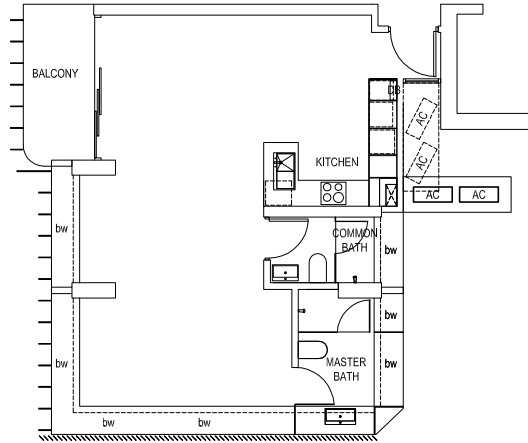
**TYPE
B4**

BP NO.: A1604-00165-2005-BP01

DATED: 30/08/2007

BP NO.: A1604-00165-2005-BP02

DATED: 25/11/2011



KEYPLAN
(NOT TO SCALE)

THE ABOVE PLANS ARE SUBJECT TO ANY AMENDMENTS AS MAYBE APPROVED BY THE RELEVANT AUTHORITIES.



THE SCOTTS TOWER

TYPE #19-04
TO #24-04
B4m

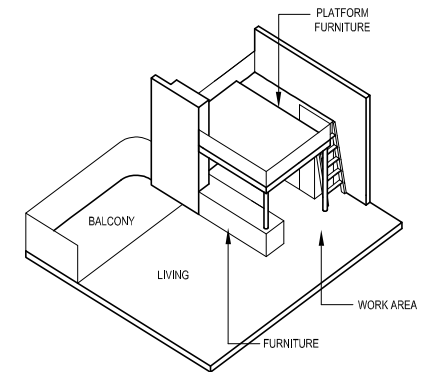
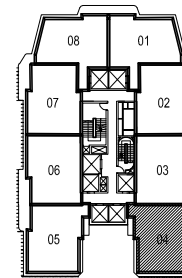
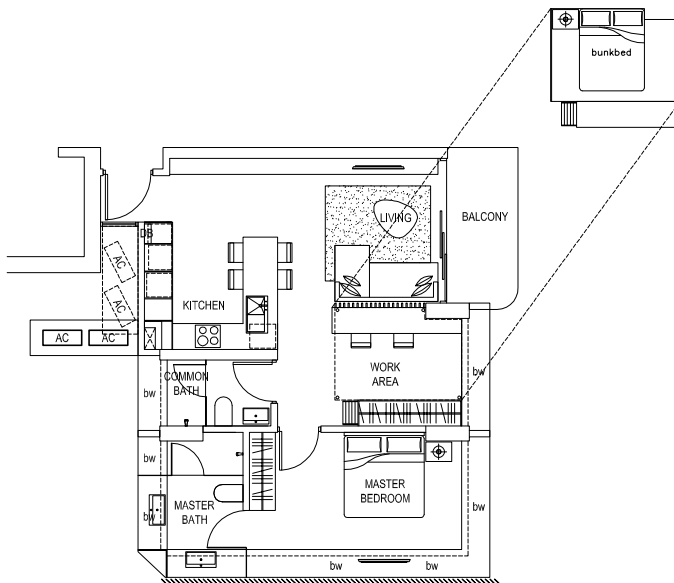
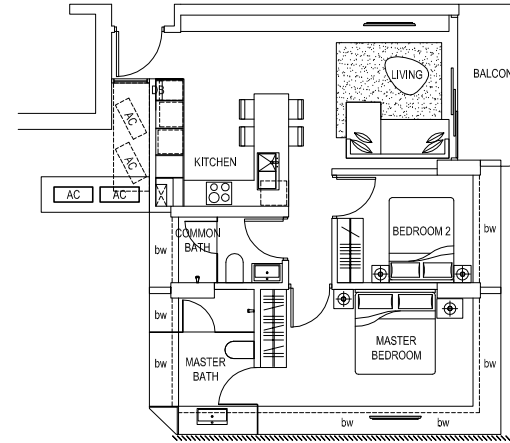
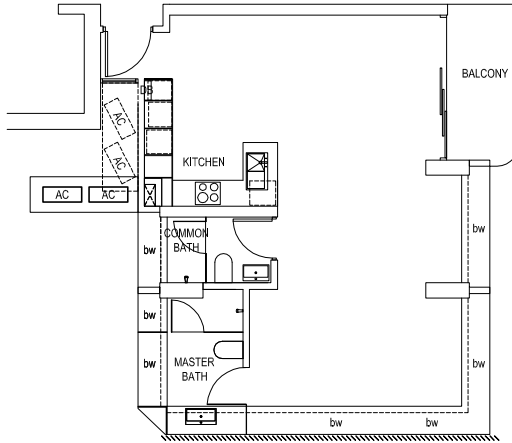
BP NO.: A1604-00165-2005-BP01

DATED: 30/08/2007

BP NO.: A1604-00165-2005-BP02

DATED: 25/11/2011

TYPE
B4m



THE ABOVE PLANS ARE SUBJECT TO ANY AMENDMENTS AS MAYBE APPROVED BY THE RELEVANT AUTHORITIES.

KEYPLAN
(NOT TO SCALE)



THE SCOTTS TOWER

**TYPE
B5**

#19-06
TO
#24-06

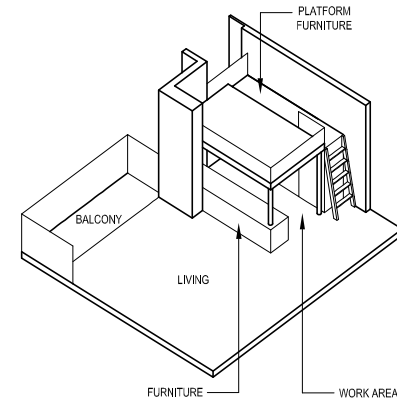
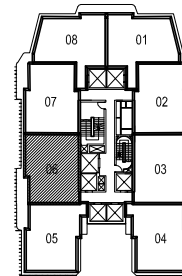
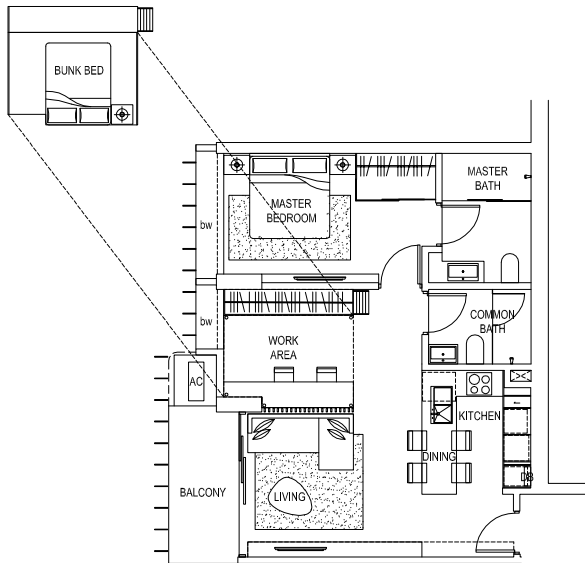
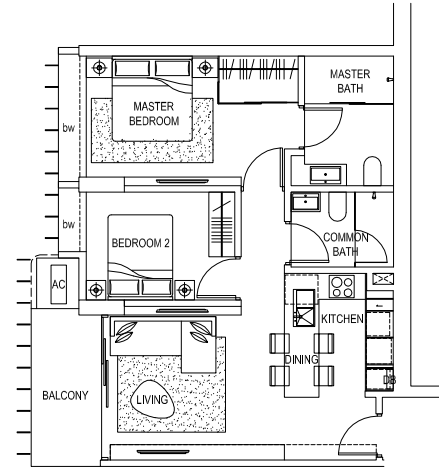
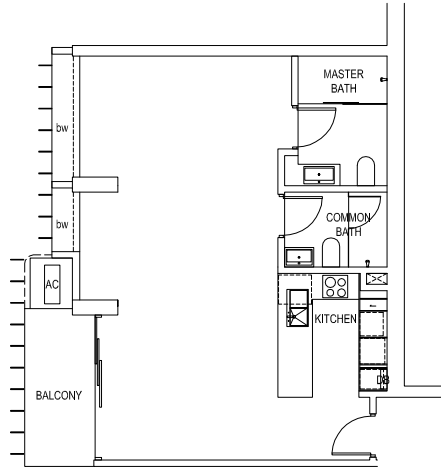
**TYPE
B5**

BP NO.: A1604-00165-2005-BP01

DATED: 30/08/2007

BP NO.: A1604-00165-2005-BP02

DATED: 25/11/2011



KEYPLAN
(NOT TO SCALE)

THE ABOVE PLANS ARE SUBJECT TO ANY AMENDMENTS AS MAYBE APPROVED BY THE RELEVANT AUTHORITIES.



THE SCOTTS TOWER

TYPE
B5m

#19-03
TO
#24-03

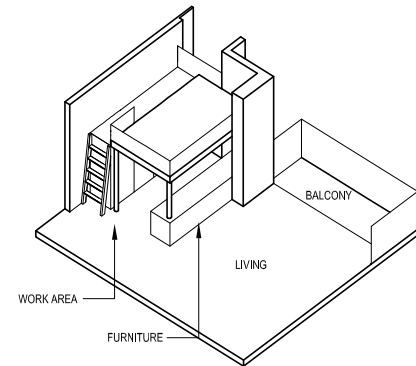
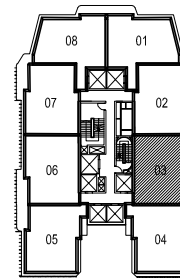
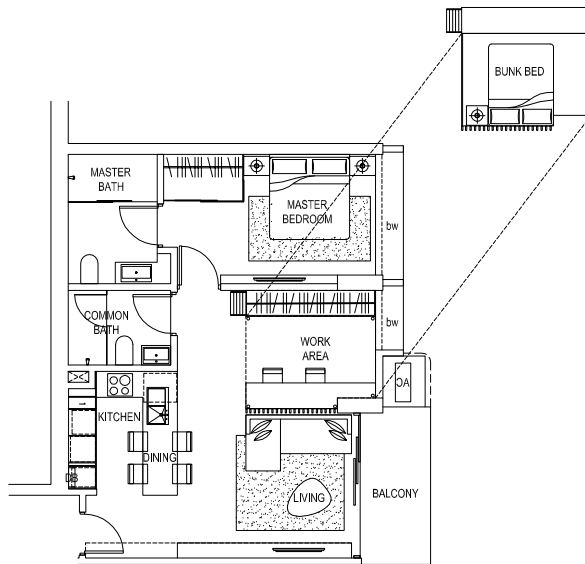
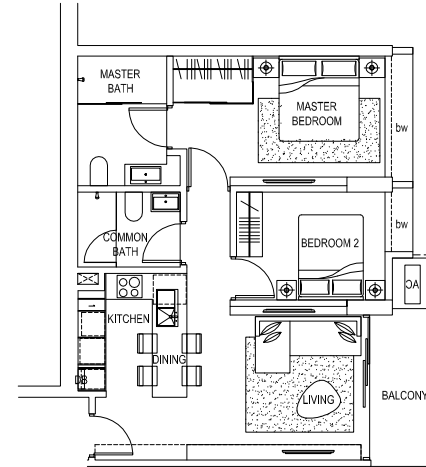
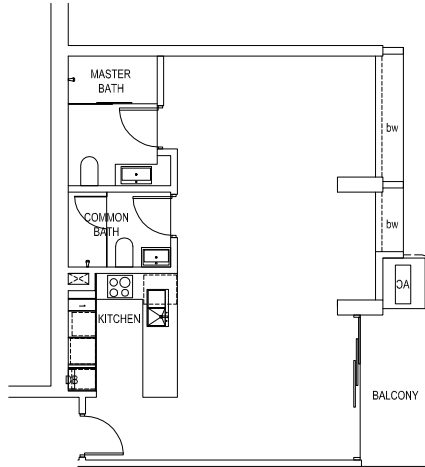
BP NO.: A1604-00165-2005-BP01

DATED: 30/08/2007

BP NO.: A1604-00165-2005-BP02

DATED: 25/11/2011

TYPE
B5m



KEYPLAN
(NOT TO SCALE)

THE ABOVE PLANS ARE SUBJECT TO ANY AMENDMENTS AS MAYBE APPROVED BY THE RELEVANT AUTHORITIES.



THE SCOTTS TOWER

**TYPE
B6**

#19-07
TO
#24-07

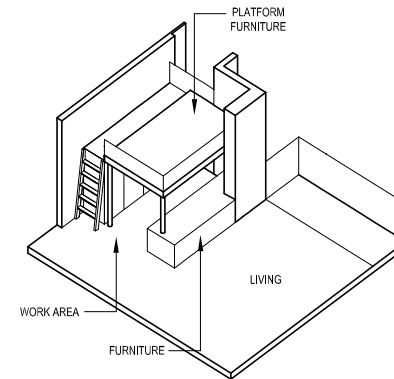
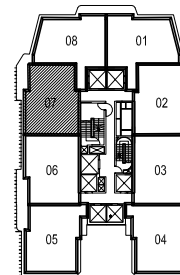
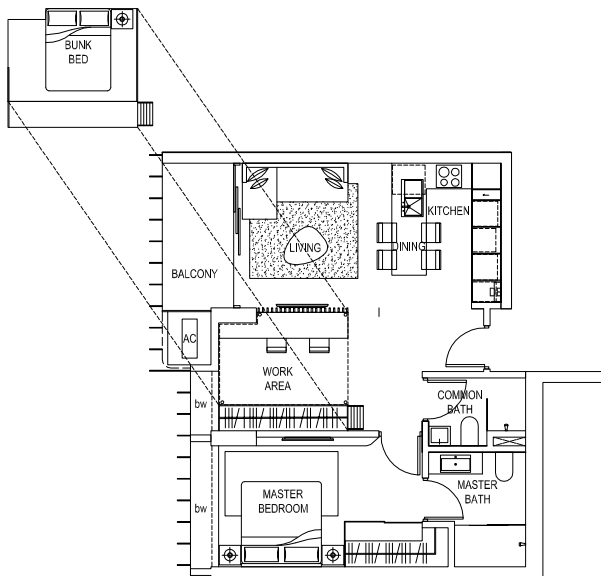
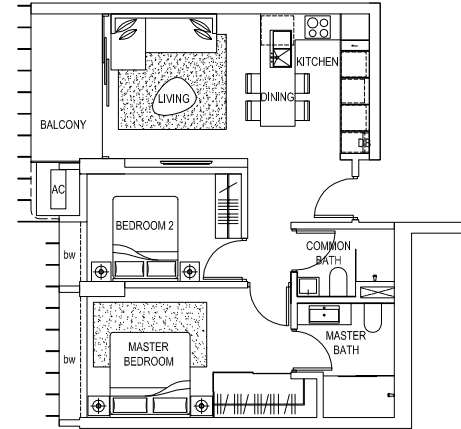
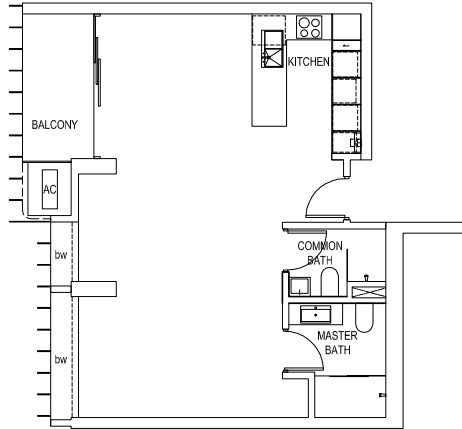
**TYPE
B6**

BP NO.: A1604-00165-2005-BP01

DATED: 30/08/2007

BP NO.: A1604-00165-2005-BP02

DATED: 25/11/2011



KEYPLAN
(NOT TO SCALE)

THE ABOVE PLANS ARE SUBJECT TO ANY AMENDMENTS AS MAYBE APPROVED BY THE RELEVANT AUTHORITIES.



THE SCOTTS TOWER

TYPE #19-02
TO #24-02
B6m

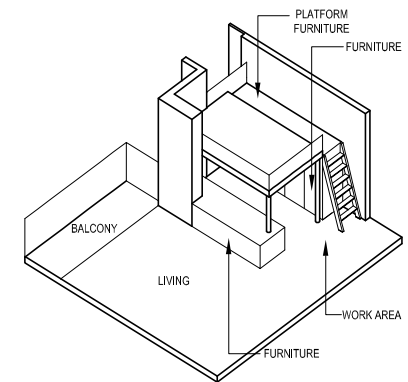
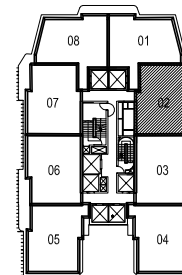
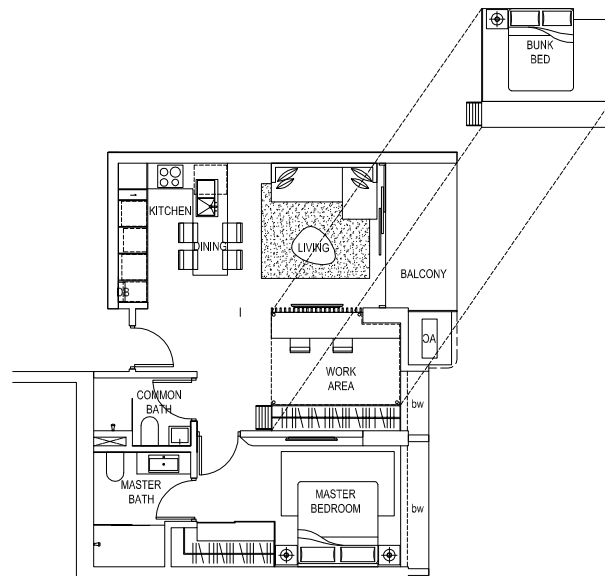
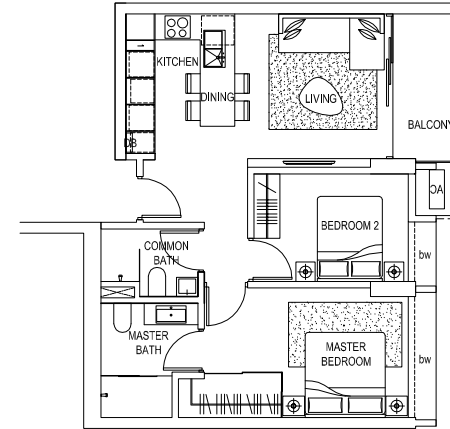
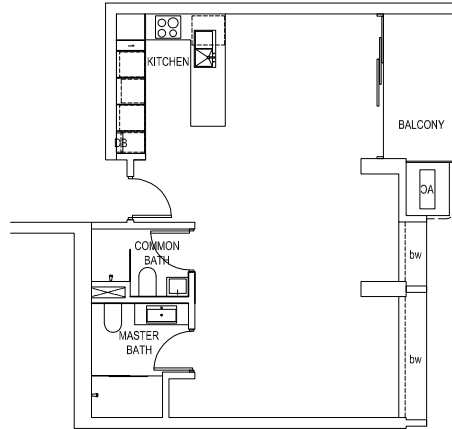
BP NO.: A1604-00165-2005-BP01

DATED: 30/08/2007

BP NO.: A1604-00165-2005-BP02

DATED: 25/11/2011

TYPE
B6m



KEYPLAN
(NOT TO SCALE)

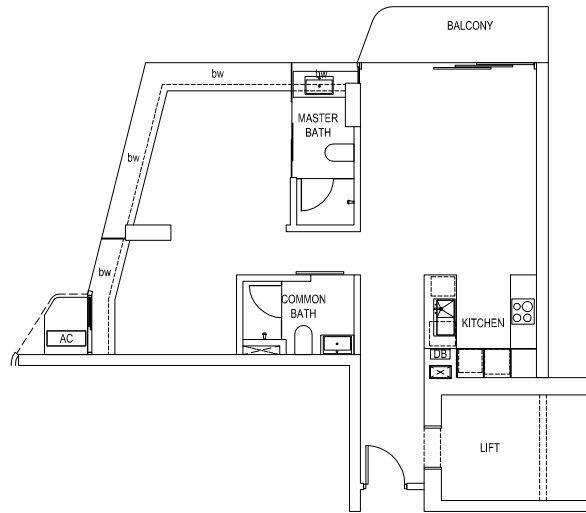
THE ABOVE PLANS ARE SUBJECT TO ANY AMENDMENTS AS MAYBE APPROVED BY THE RELEVANT AUTHORITIES.



THE SCOTTS TOWER

**TYPE
B7**

#19-08
TO
#24-08



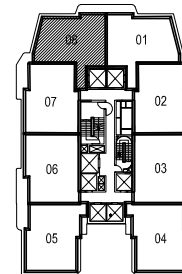
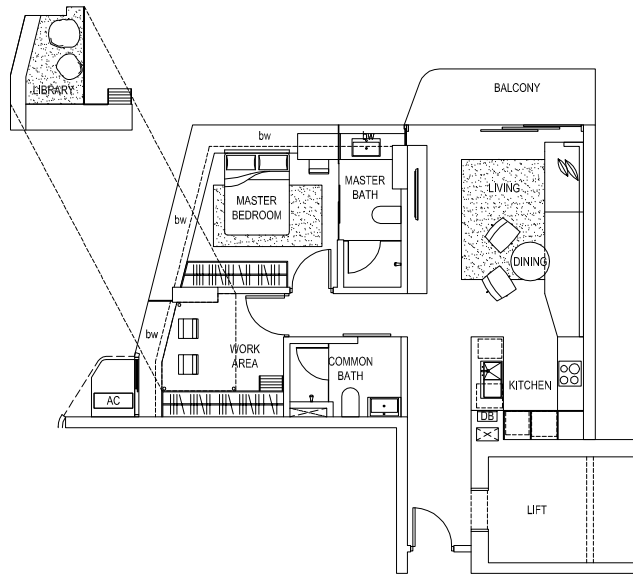
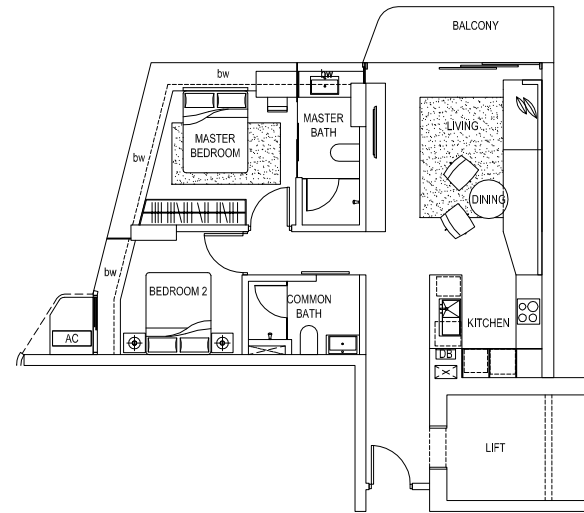
**TYPE
B7**

BP NO.: A1604-00165-2005-BP01

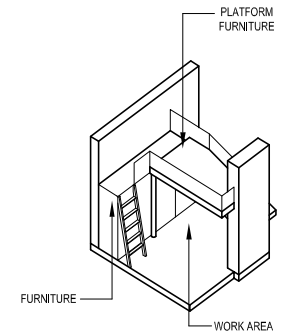
DATED: 30/08/2007

BP NO.: A1604-00165-2005-BP02

DATED: 25/11/2011



KEYPLAN
(NOT TO SCALE)



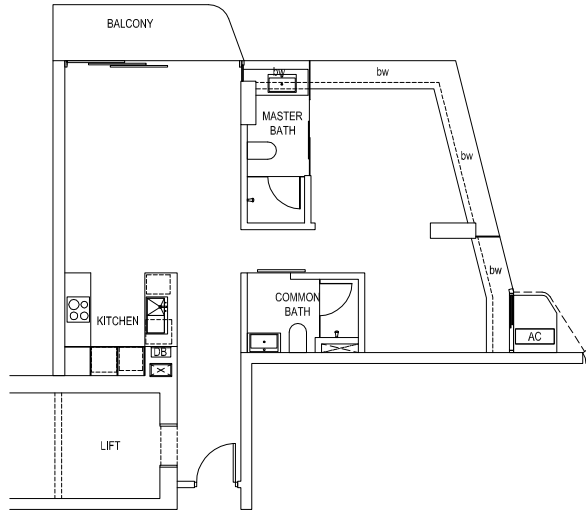
THE ABOVE PLANS ARE SUBJECT TO ANY AMENDMENTS AS MAYBE APPROVED BY THE RELEVANT AUTHORITIES.



THE SCOTTS TOWER

TYPE
B7m

#19-01
TO
#24-01



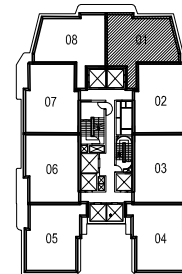
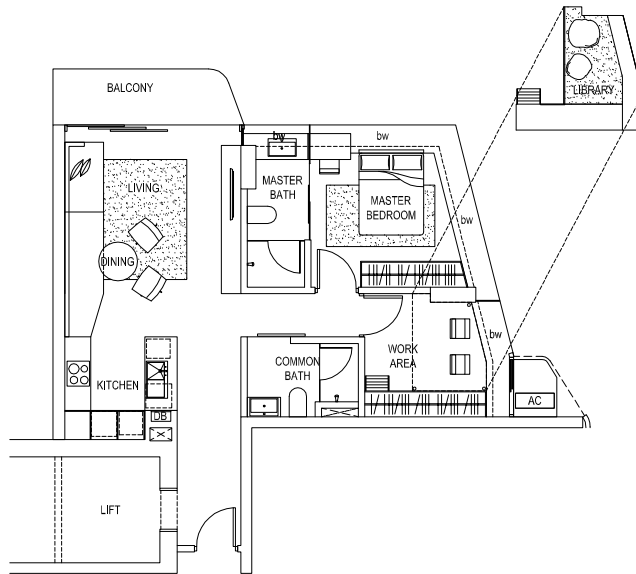
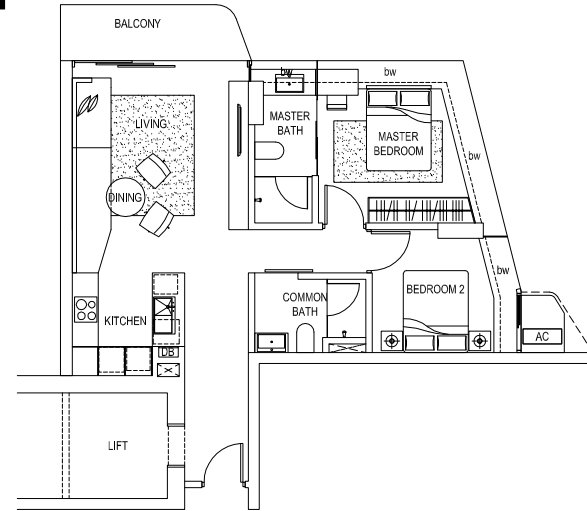
TYPE
B7m

BP NO.: A1604-00165-2005-BP01

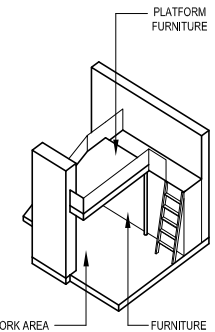
DATED: 30/08/2007

BP NO.: A1604-00165-2005-BP02

DATED: 25/11/2011



KEYPLAN
(NOT TO SCALE)



THE ABOVE PLANS ARE SUBJECT TO ANY AMENDMENTS AS MAYBE APPROVED BY THE RELEVANT AUTHORITIES.



THE SCOTTS TOWER

BP NO.: A1604-00165-2005-BP01
DATED: 30/08/2007

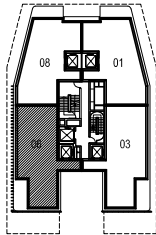
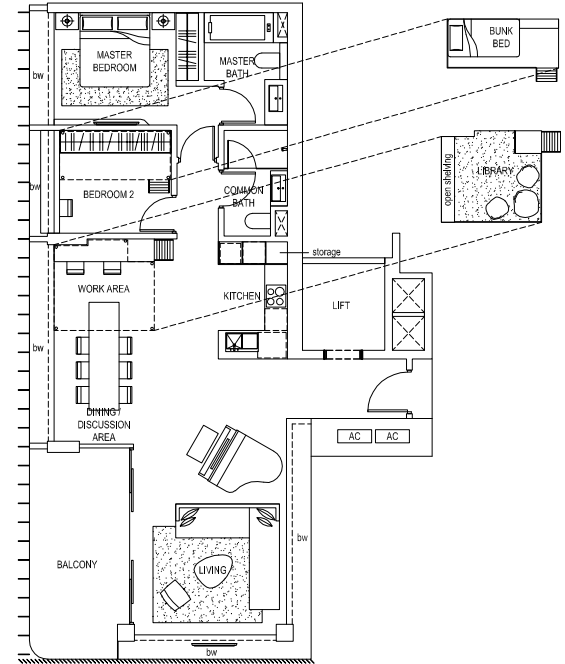
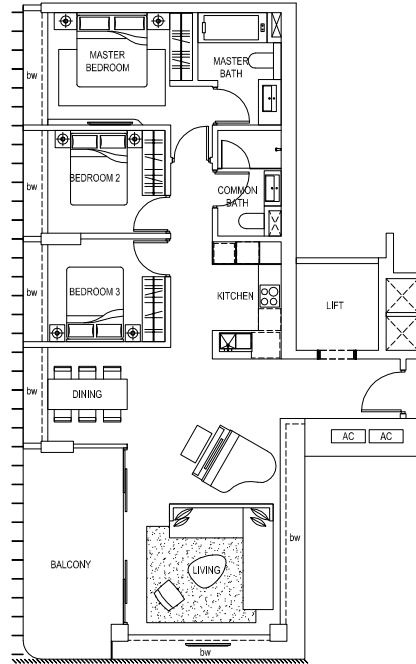
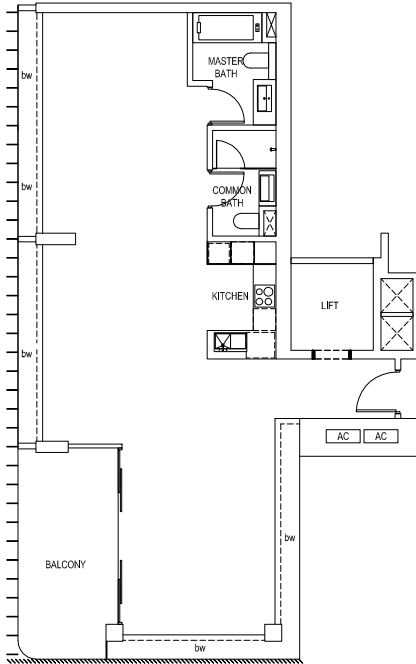
BP NO.: A1604-00165-2005-BP02
DATED: 25/11/2011

TYPE
C1

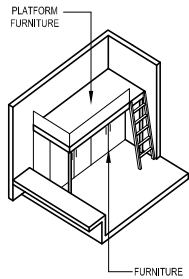
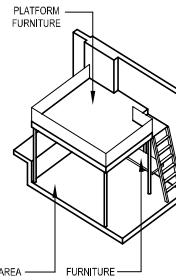
#26-06
TO
#30-06

TYPE
C1

TYPE
C1



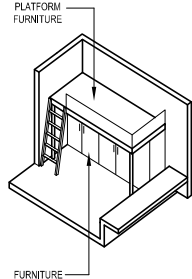
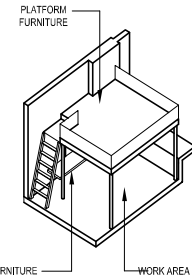
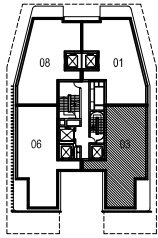
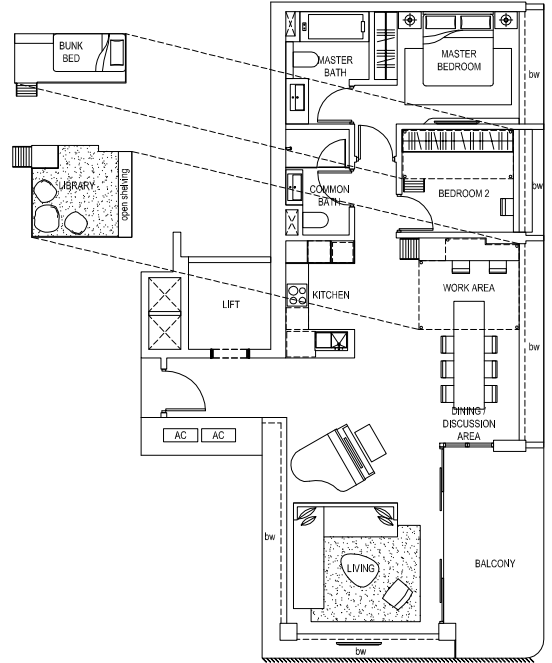
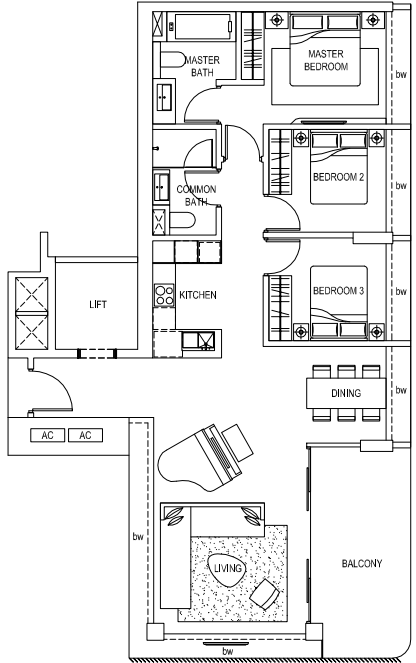
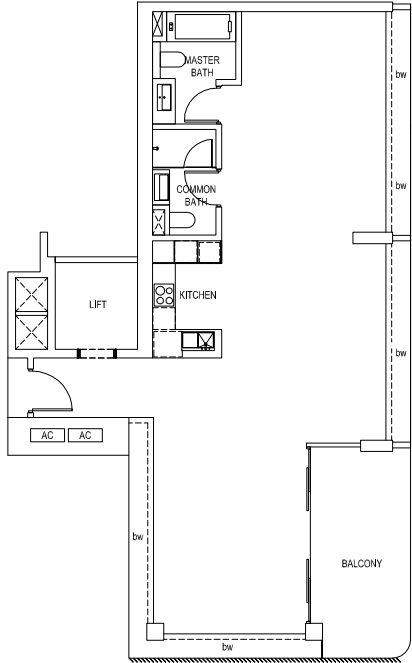
KEYPLAN
(NOT TO SCALE)



SCALE 1:175

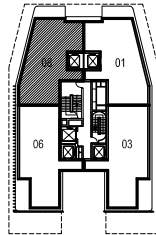
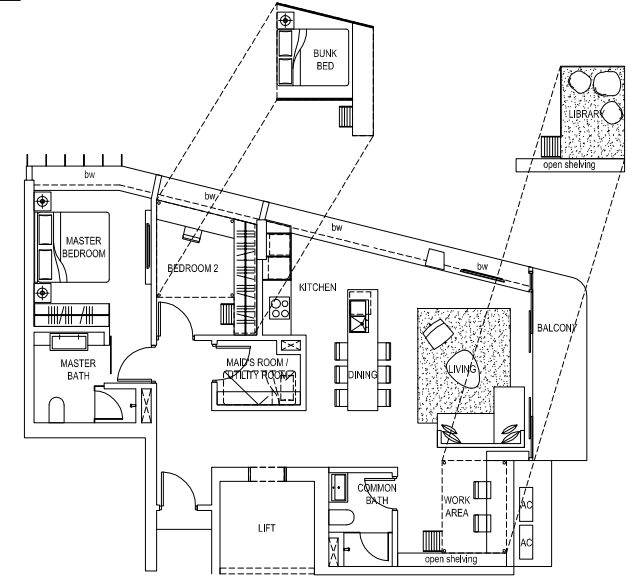
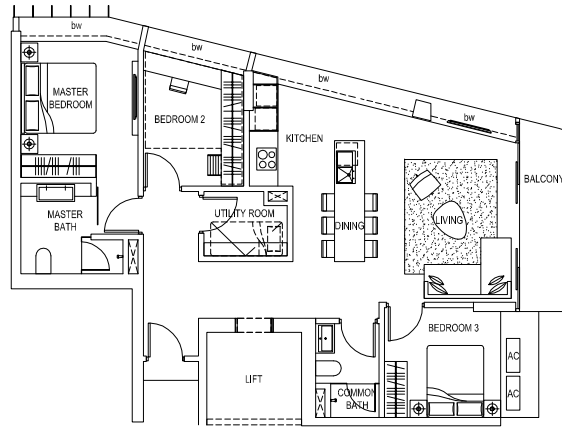
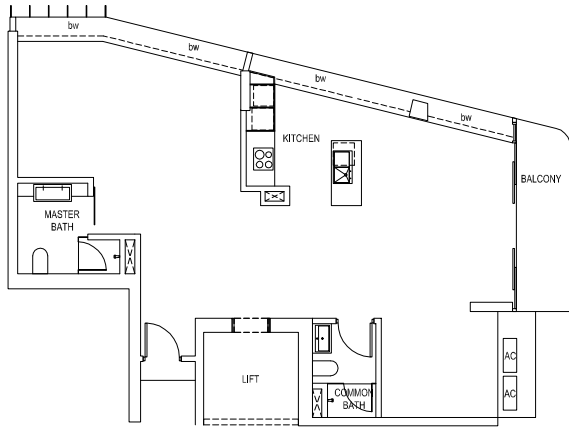
THE ABOVE PLANS ARE SUBJECT TO ANY AMENDMENTS AS MAYBE APPROVED BY THE RELEVANT AUTHORITIES.

BP NO.: A1604-00165-2005-BP02 DATED: 25/11/2011

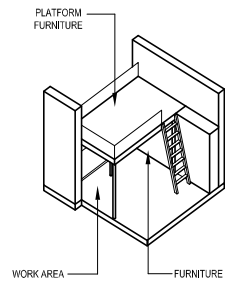
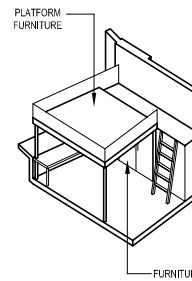


KEYPLAN
(NOT TO SCALE)

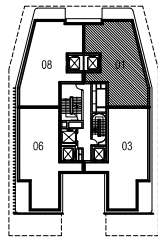
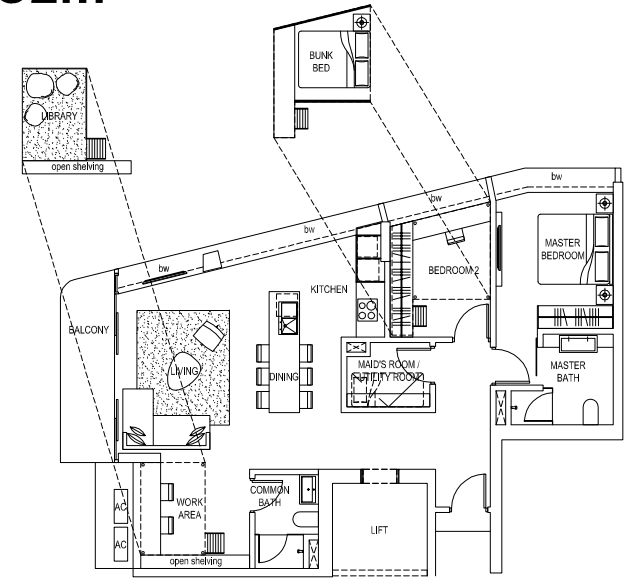
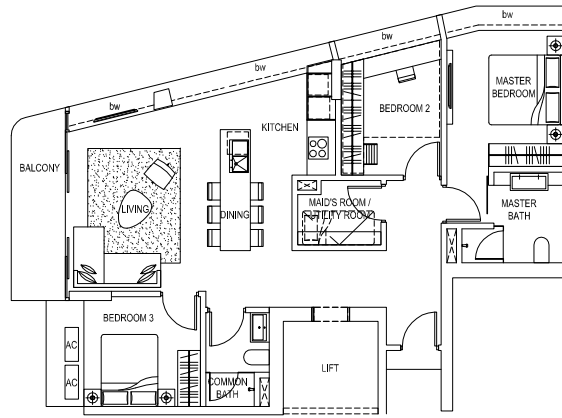
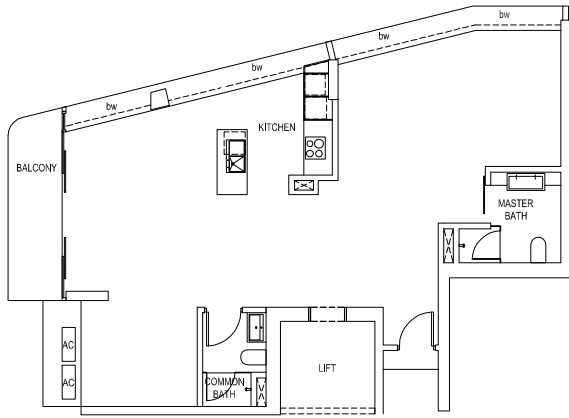
THE ABOVE PLANS ARE SUBJECT TO ANY AMENDMENTS AS MAYBE APPROVED BY THE RELEVANT AUTHORITIES.



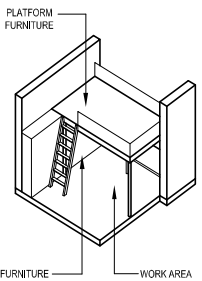
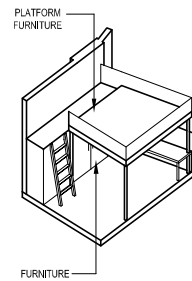
KEYPLAN
(NOT TO SCALE)



SCALE 1:175
THE ABOVE PLANS ARE SUBJECT TO ANY AMENDMENTS AS MAYBE APPROVED BY THE RELEVANT AUTHORITIES.

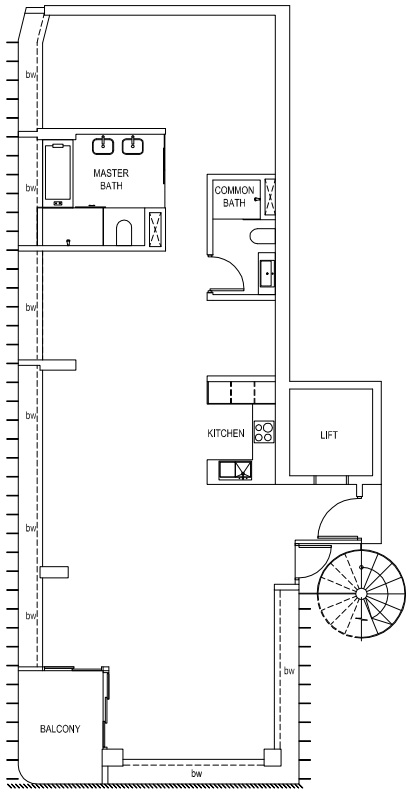


KEYPLAN
(NOT TO SCALE)

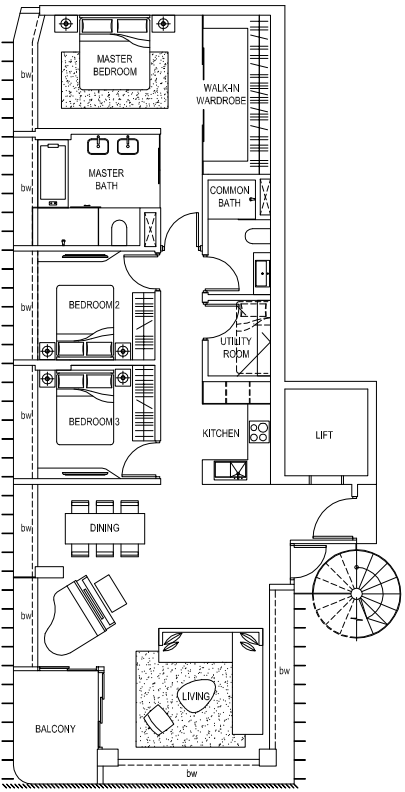


SCALE 1:175
THE ABOVE PLANS ARE SUBJECT TO ANY AMENDMENTS AS MAYBE APPROVED BY THE RELEVANT AUTHORITIES.

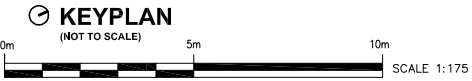
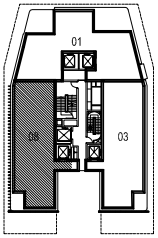
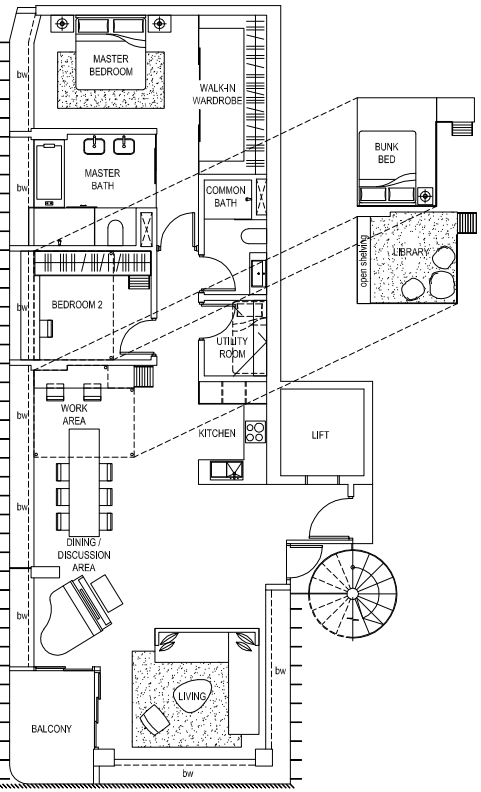
TYPE D1
#31-08



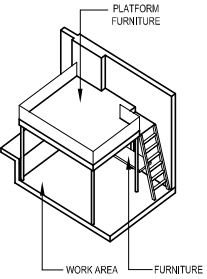
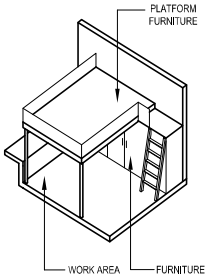
TYPE D1



TYPE D1

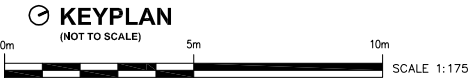
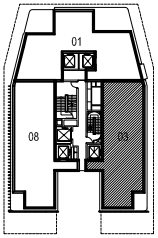
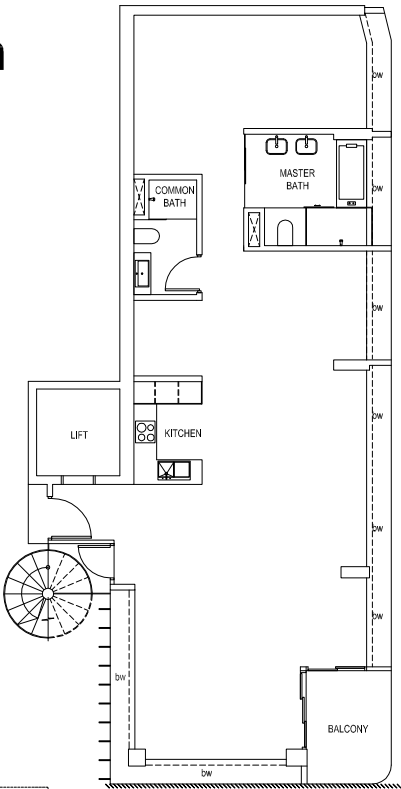


THE ABOVE PLANS ARE SUBJECT TO ANY AMENDMENTS AS MAYBE APPROVED BY THE RELEVANT AUTHORITIES.



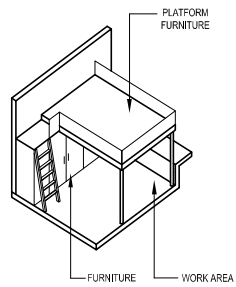
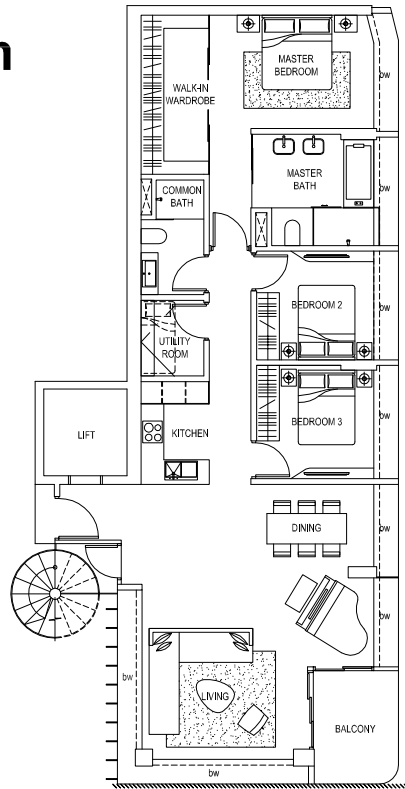
BP NO.: A1604-00165-2005-BP01
DATED: 30/08/2007
BP NO.: A1604-00165-2005-BP02
DATED: 25/11/2011

TYPE D1m
#31-03

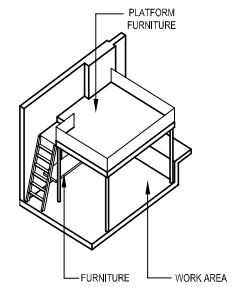
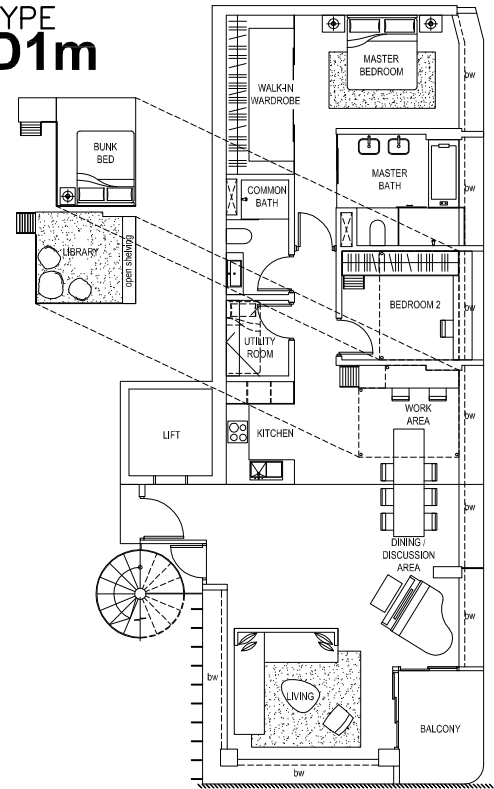


THE ABOVE PLANS ARE SUBJECT TO ANY AMENDMENTS AS MAYBE APPROVED BY THE RELEVANT AUTHORITIES.

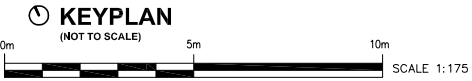
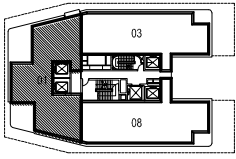
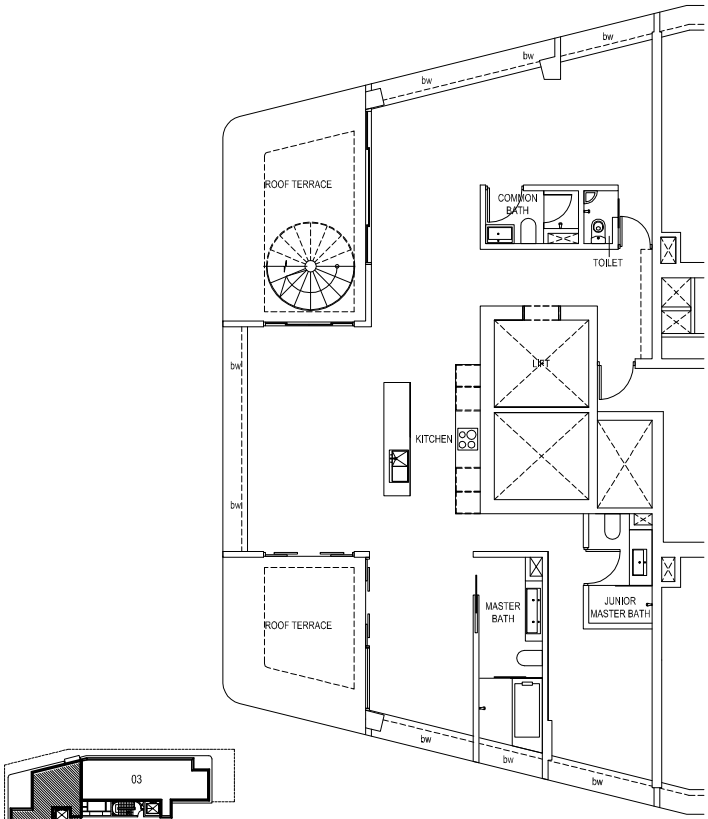
TYPE D1m



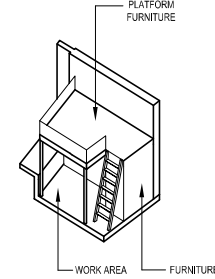
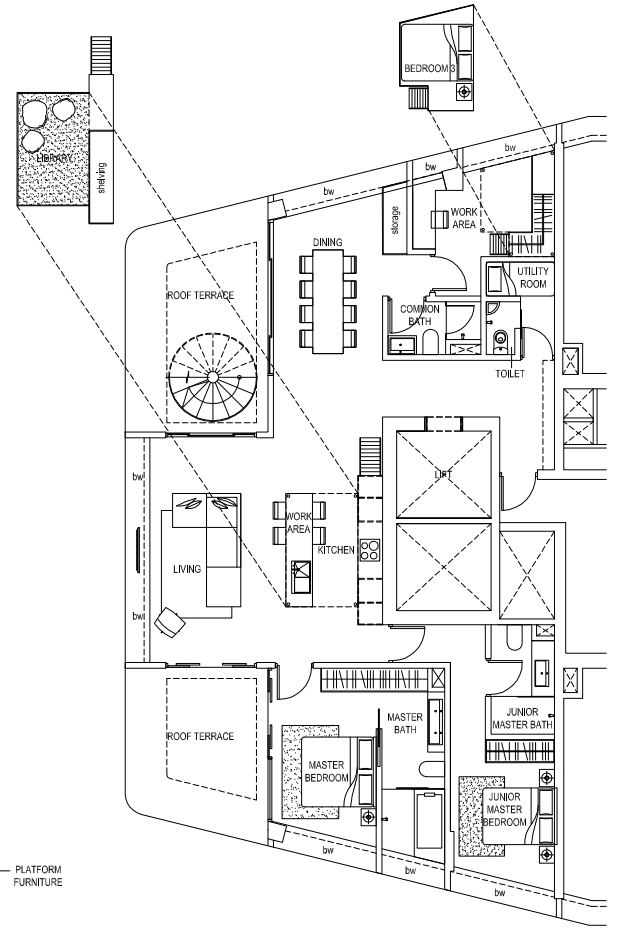
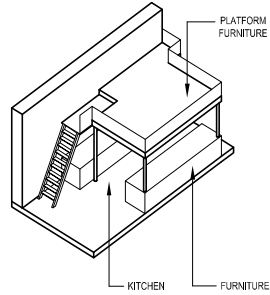
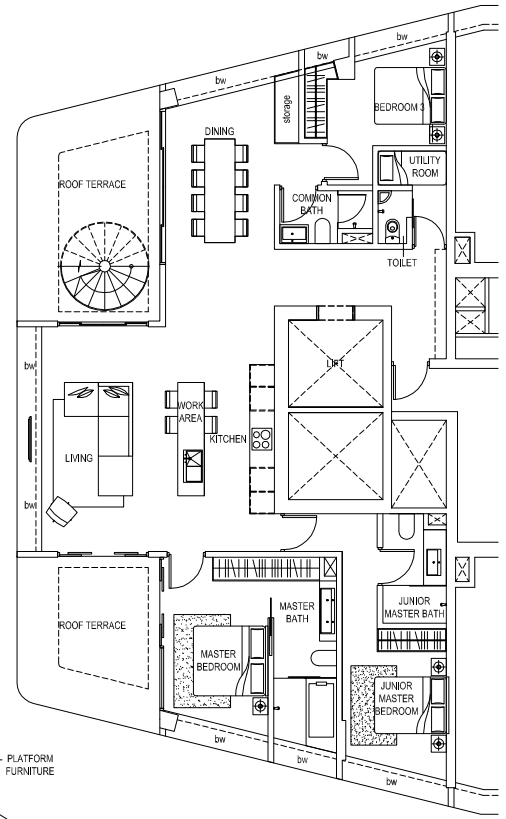
TYPE D1m



BP NO.: A1604-00165-2005-BP01
DATED: 30/08/2007
BP NO.: A1604-00165-2005-BP02
DATED: 25/11/2011

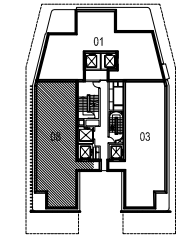
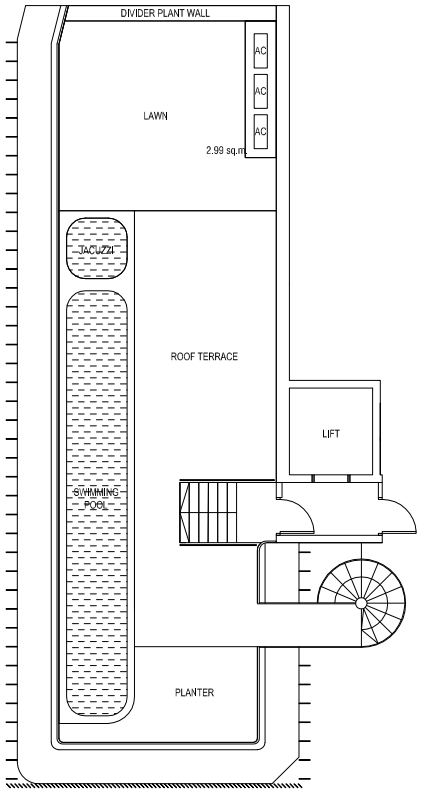


THE ABOVE PLANS ARE SUBJECT TO ANY AMENDMENTS AS MAYBE APPROVED BY THE RELEVANT AUTHORITIES.



BP NO.: A1604-00165-2005-BP01
DATED: 30/08/2007
BP NO.: A1604-00165-2005-BP02
DATED: 25/11/2011

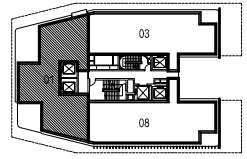
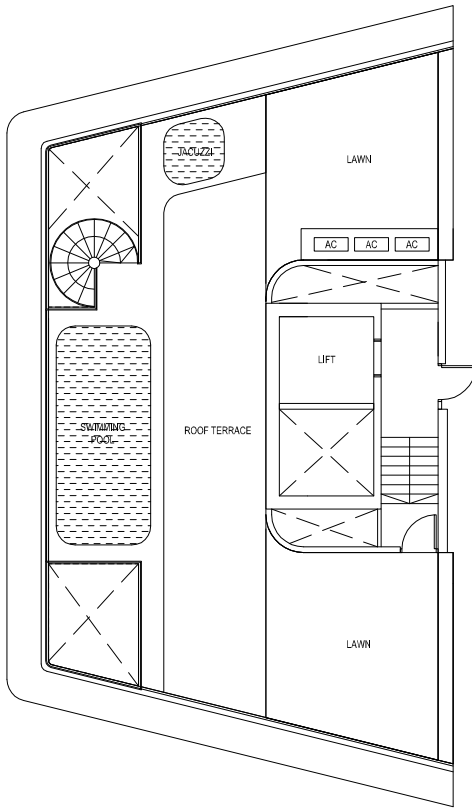
TYPE D1
#31-08



KEYPLAN
(NOT TO SCALE)
0m 5m 10m
SCALE 1:175

THE ABOVE PLANS ARE SUBJECT TO ANY AMENDMENTS AS MAYBE APPROVED BY THE RELEVANT AUTHORITIES.

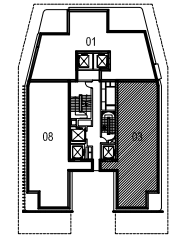
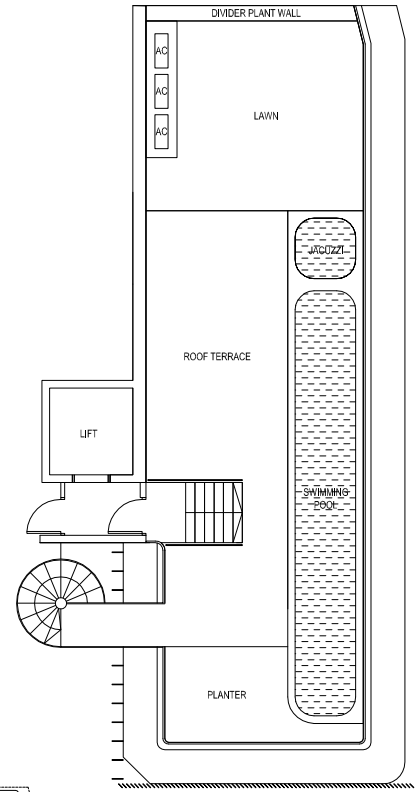
TYPE D2
#31-01



KEYPLAN
(NOT TO SCALE)
0m 5m 10m
SCALE 1:175

THE ABOVE PLANS ARE SUBJECT TO ANY AMENDMENTS AS MAYBE APPROVED BY THE RELEVANT AUTHORITIES.

TYPE D1m
#31-03



KEYPLAN
(NOT TO SCALE)
0m 5m 10m
SCALE 1:175

THE ABOVE PLANS ARE SUBJECT TO ANY AMENDMENTS AS MAYBE APPROVED BY THE RELEVANT AUTHORITIES.

BP NO.: A1604-00165-2005-BP01
DATED: 30/08/2007

BP NO.: A1604-00165-2005-BP02
DATED: 25/11/2011