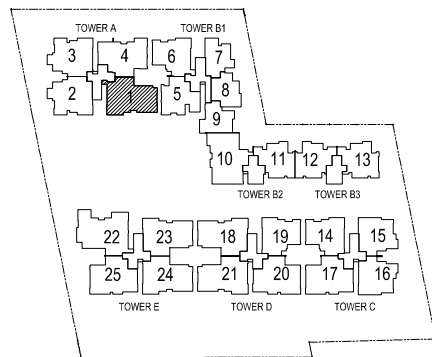
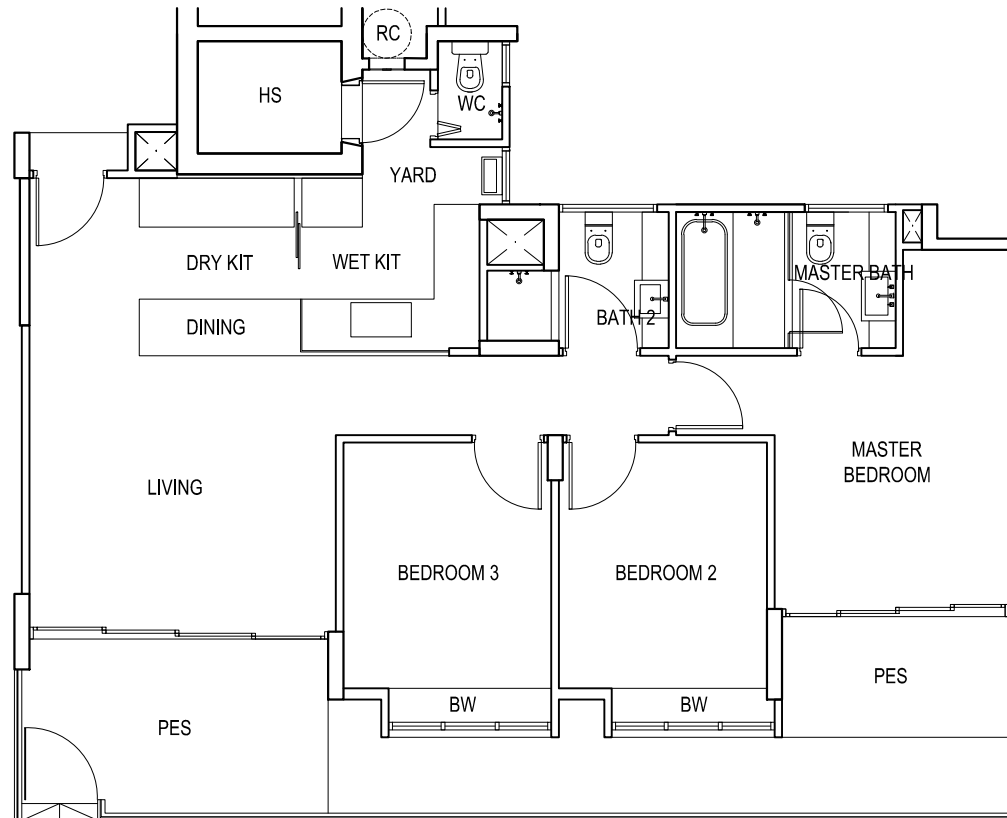
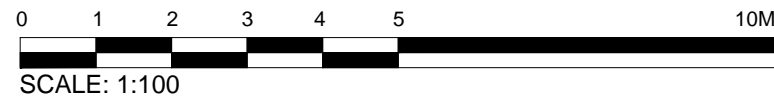


TYPE C5(p2)

The below plan is subject to change as may be approved by the relevant authorities.



KEY PLAN 
THIS KEY PLAN IS NOT TO SCALE

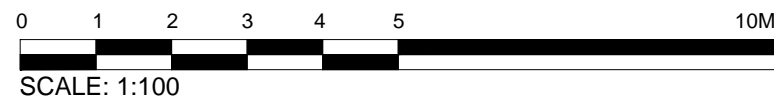
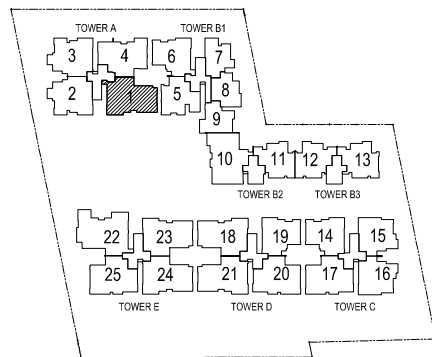
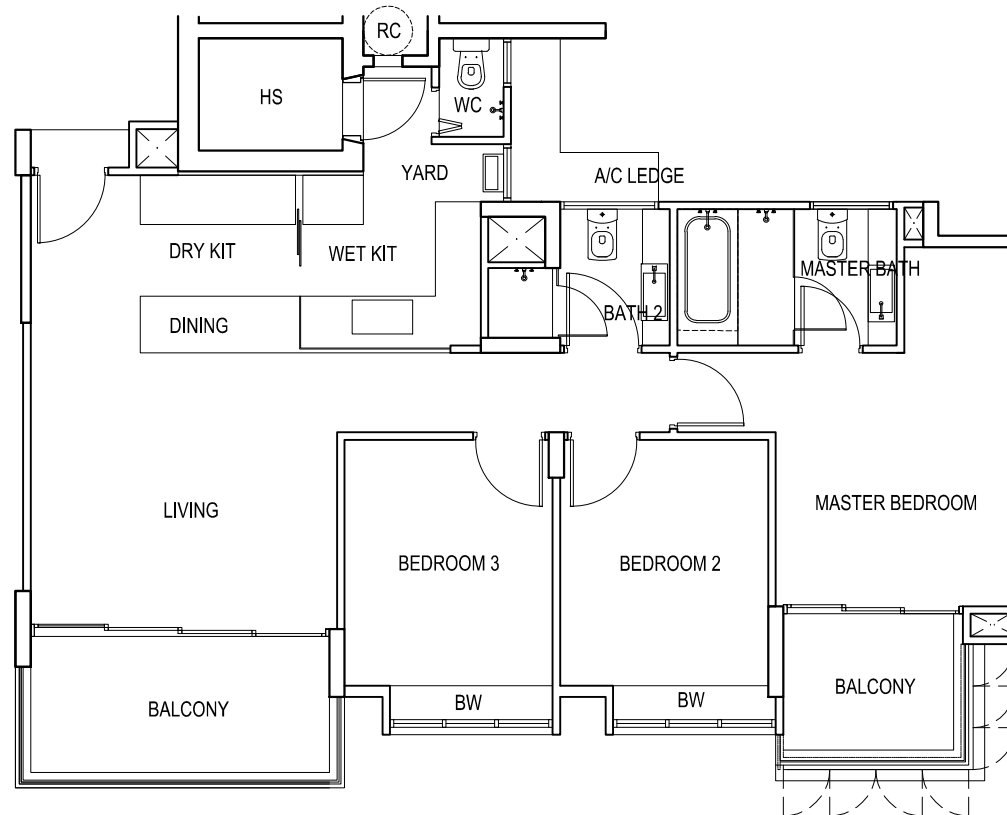


BP No. A779-00820-2008-BP01
BP No. A779-00820-2008-BP02

Approved Date : 23-04-2010
Approved Date : 07-06-2010

TYPE C5(b2)

The below plan is subject to change as may be approved by the relevant authorities.



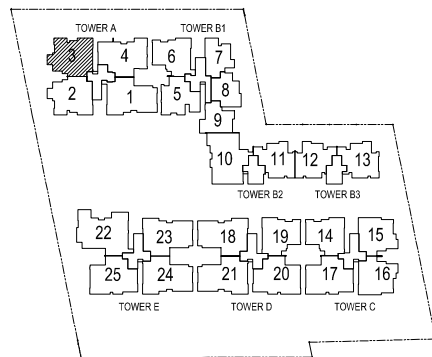
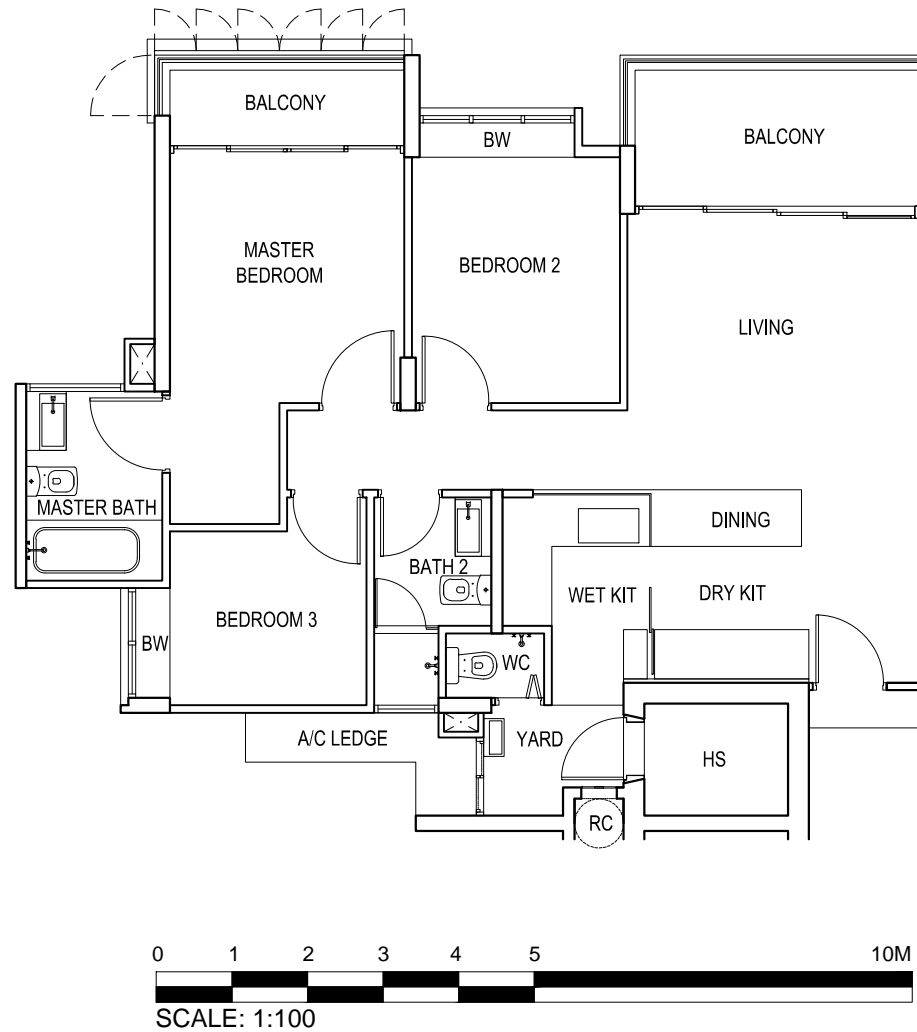
KEY PLAN 
THIS KEY PLAN IS NOT TO SCALE

BP No. A779-00820-2008-BP01
BP No. A779-00820-2008-BP02

Approved Date : 23-04-2010
Approved Date : 07-06-2010

TYPE C1c(b)

The below plan is subject to change as may be approved by the relevant authorities.



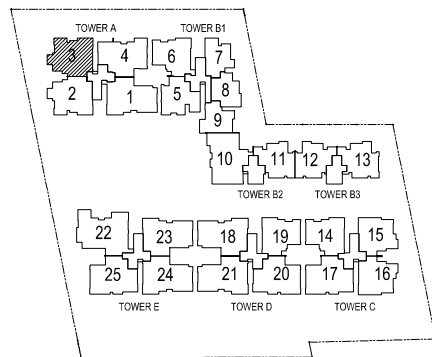
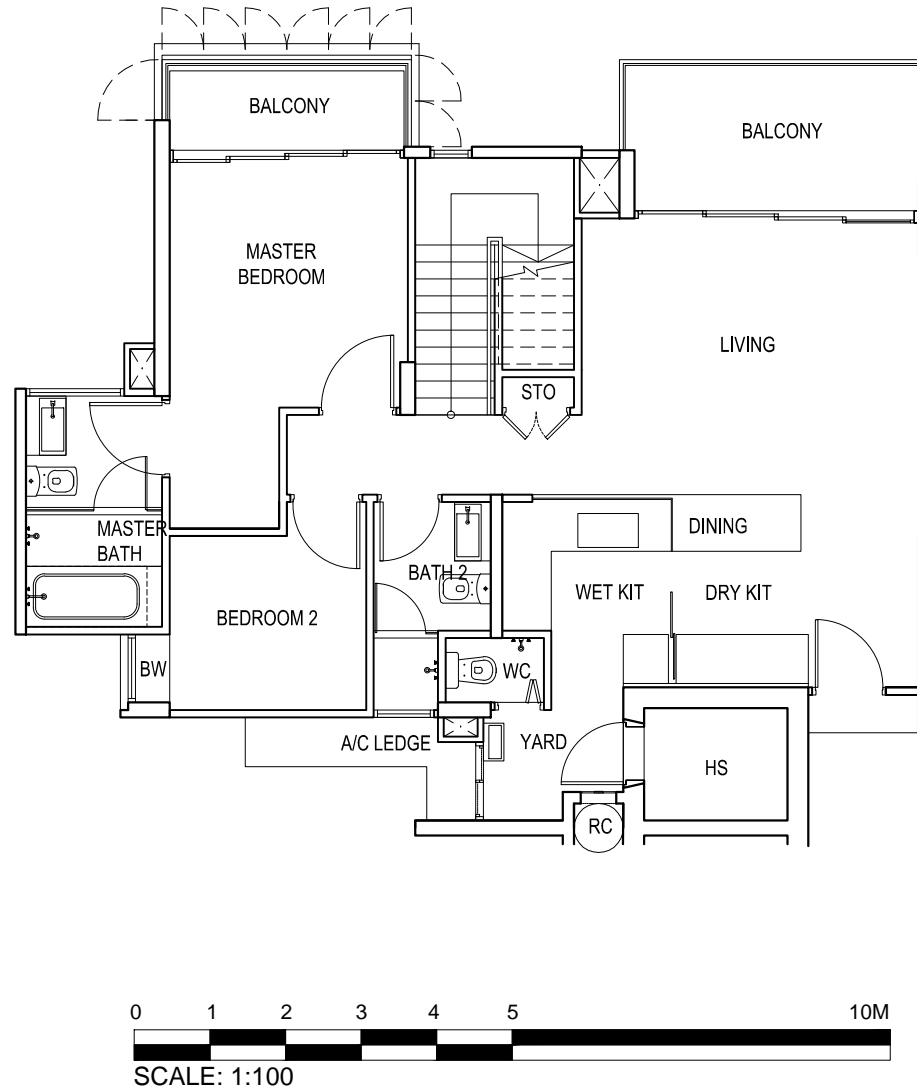
KEY PLAN 
THIS KEY PLAN IS NOT TO SCALE

BP No. A779-00820-2008-BP01
BP No. A779-00820-2008-BP02

Approved Date : 23-04-2010
Approved Date : 07-06-2010

TYPE D1c(b)

The below plan is subject to change as may be approved by the relevant authorities.



KEY PLAN 
THIS KEY PLAN IS NOT TO SCALE

BP No. A779-00820-2008-BP01
BP No. A779-00820-2008-BP02

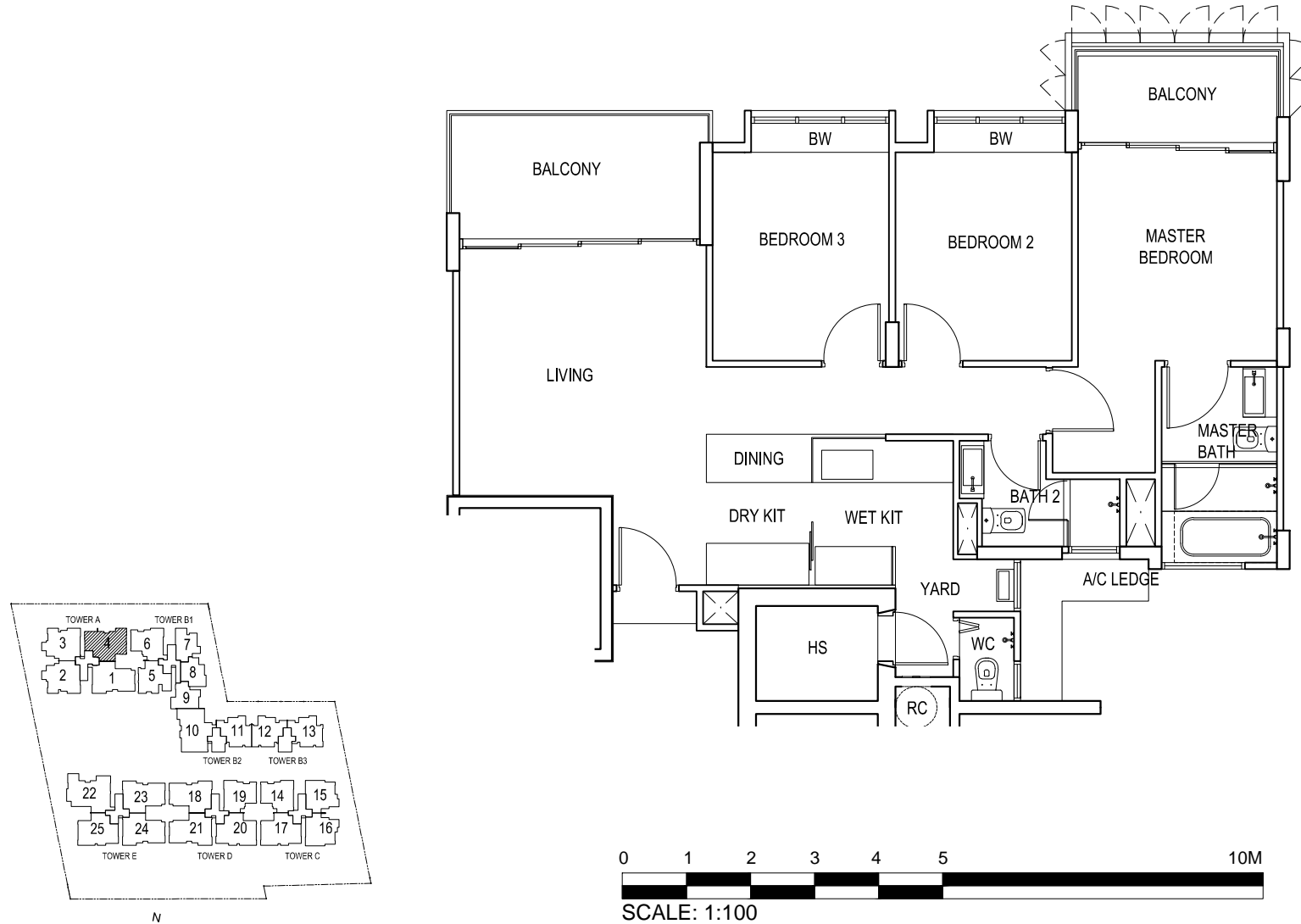
Approved Date : 23-04-2010
Approved Date : 07-06-2010

THE SOUND

UNIT #02-04
UNIT #03-04
UNIT #04-04

TYPE C2(b)

The below plan is subject to change as may be approved by the relevant authorities.



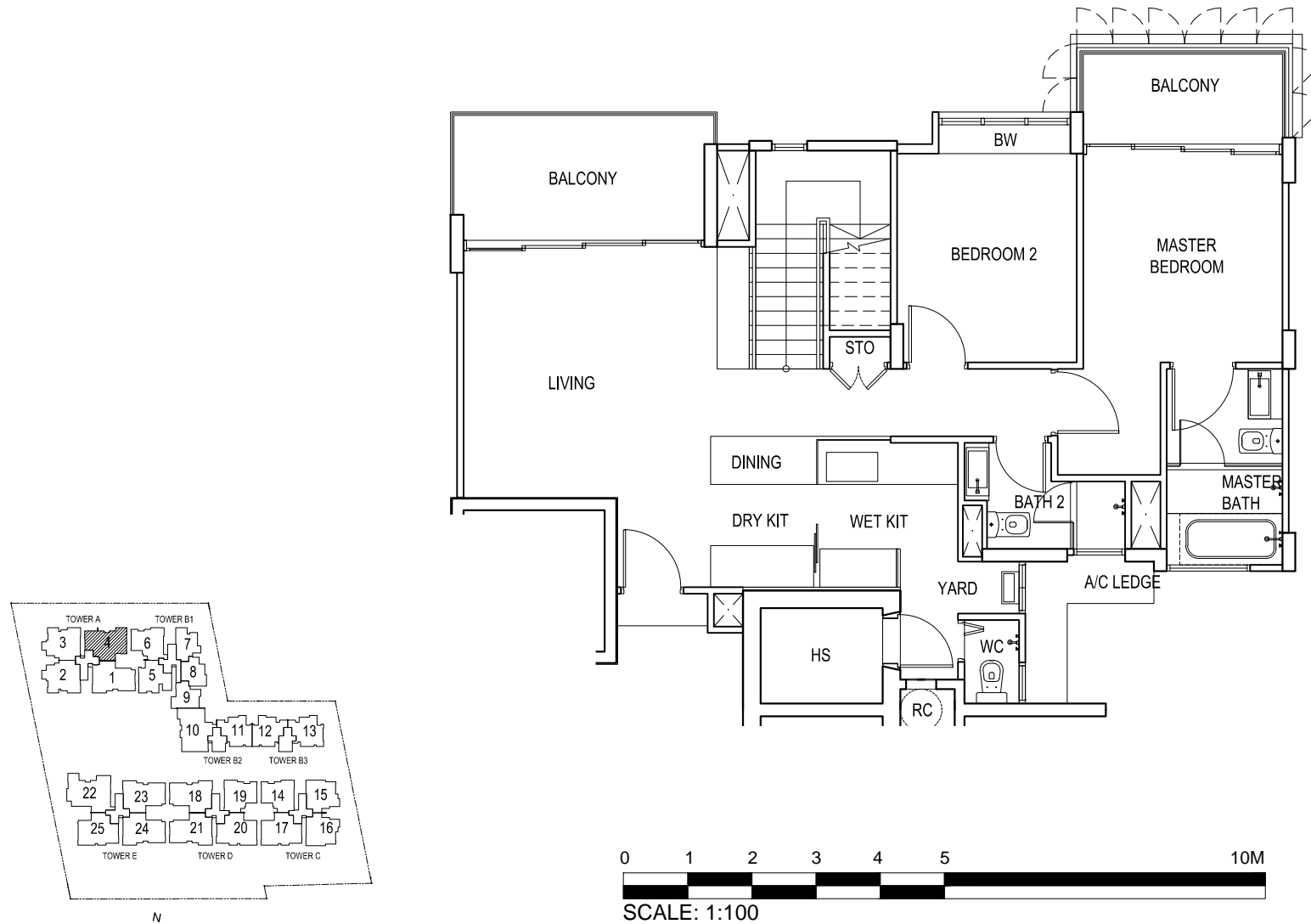
KEY PLAN
THIS KEY PLAN IS NOT TO SCALE

BP No. A779-00820-2008-BP01
BP No. A779-00820-2008-BP02

Approved Date : 23-04-2010
Approved Date : 07-06-2010

TYPE D2c(b)

The below plan is subject to change as may be approved by the relevant authorities.



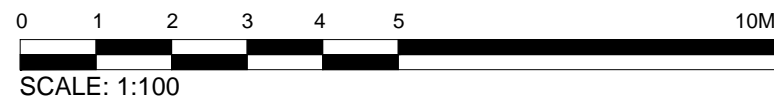
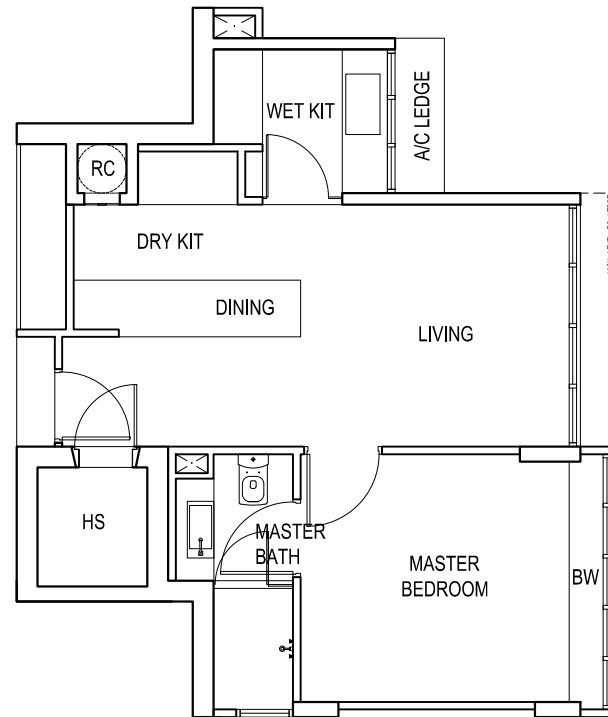
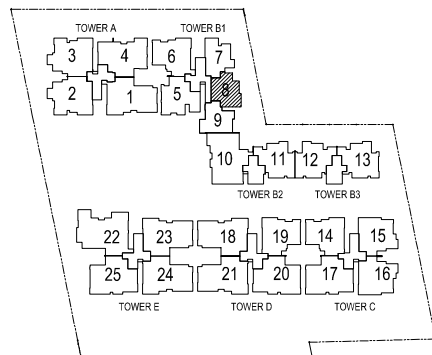
KEY PLAN 
THIS KEY PLAN IS NOT TO SCALE

BP No. A779-00820-2008-BP01
BP No. A779-00820-2008-BP02

Approved Date : 23-04-2010
Approved Date : 07-06-2010

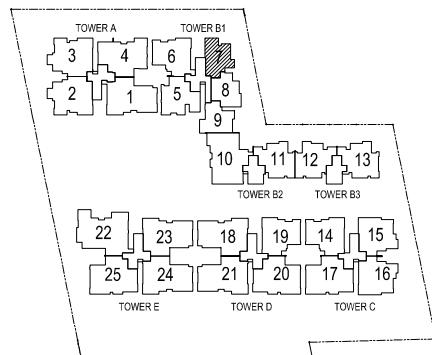
TYPE A2

The below plan is subject to change as may be approved by the relevant authorities.

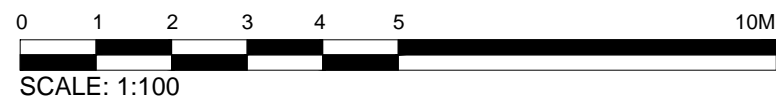
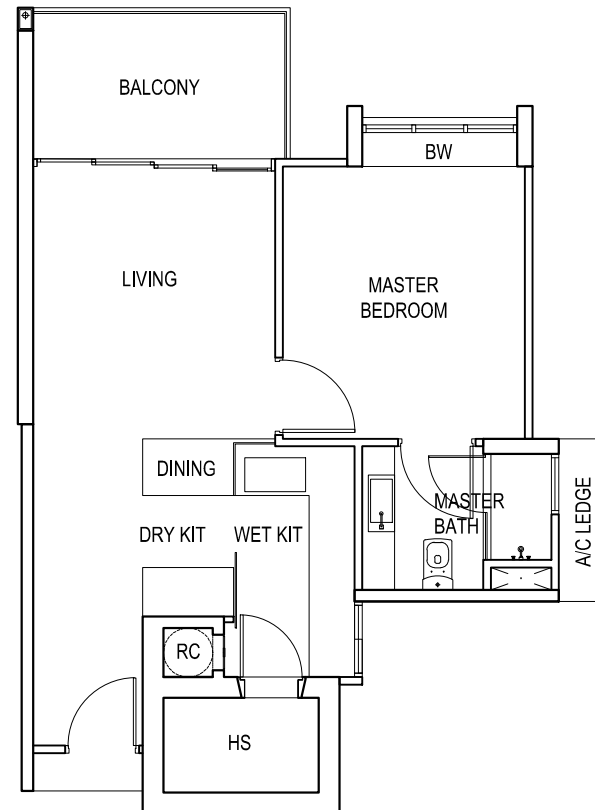


TYPE A1(b1)

The below plan is subject to change as may be approved by the relevant authorities.



KEY PLAN 
THIS KEY PLAN IS NOT TO SCALE

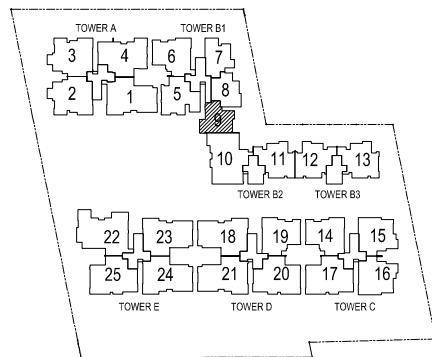
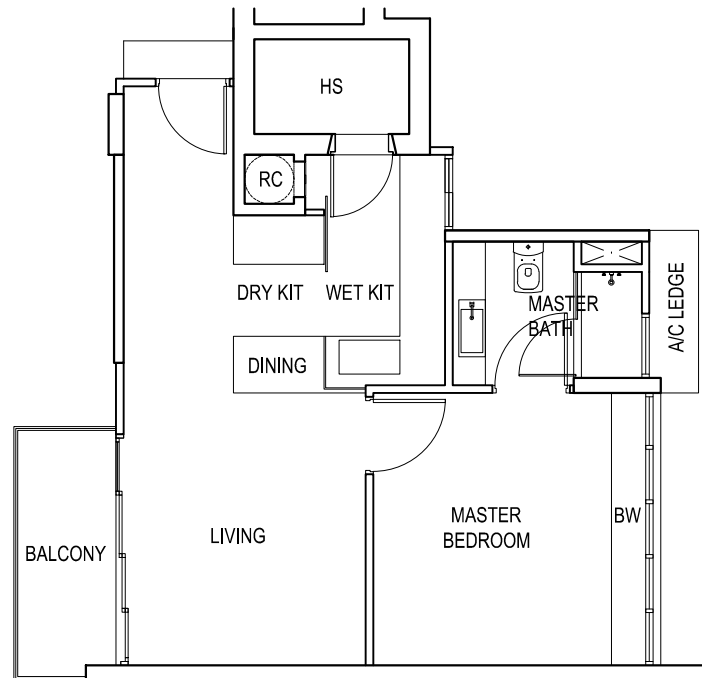


BP No. A779-00820-2008-BP01
BP No. A779-00820-2008-BP02

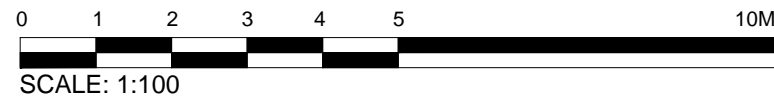
Approved Date : 23-04-2010
Approved Date : 07-06-2010

TYPE A1(b2)

The below plan is subject to change as may be approved by the relevant authorities.



KEY PLAN 
THIS KEY PLAN IS NOT TO SCALE

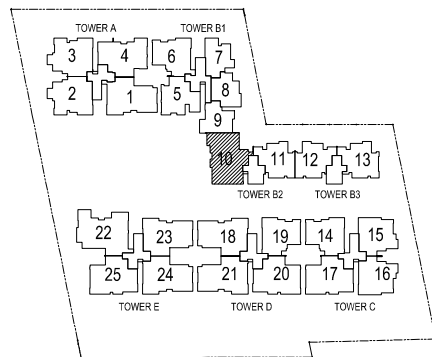
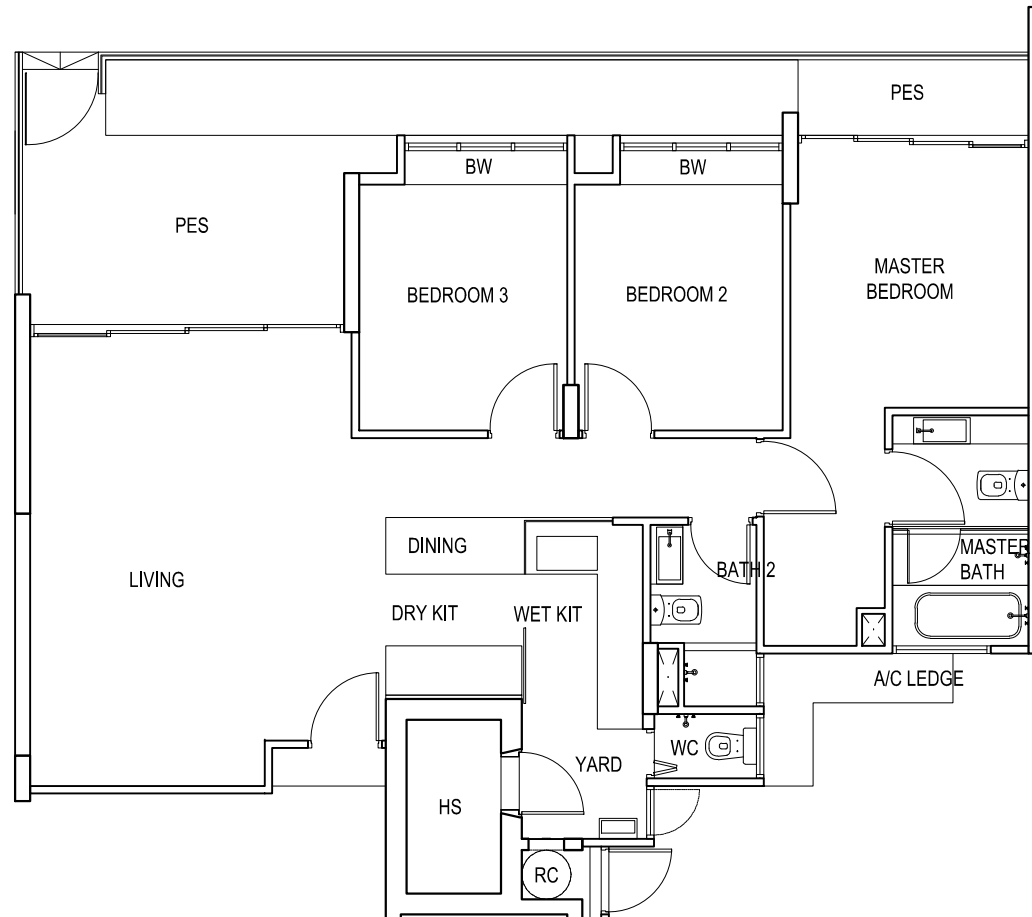


BP No. A779-00820-2008-BP01
BP No. A779-00820-2008-BP02

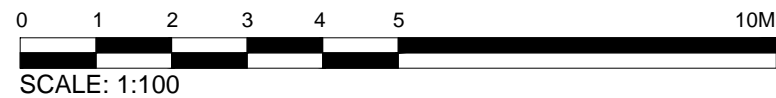
Approved Date : 23-04-2010
Approved Date : 07-06-2010

TYPE C3(p)

The below plan is subject to change as may be approved by the relevant authorities.



KEY PLAN
THIS KEY PLAN IS NOT TO SCALE

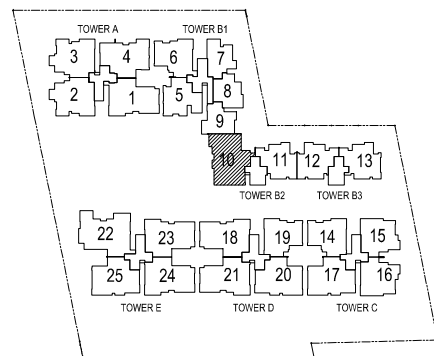


BP No. A779-00820-2008-BP01
BP No. A779-00820-2008-BP02

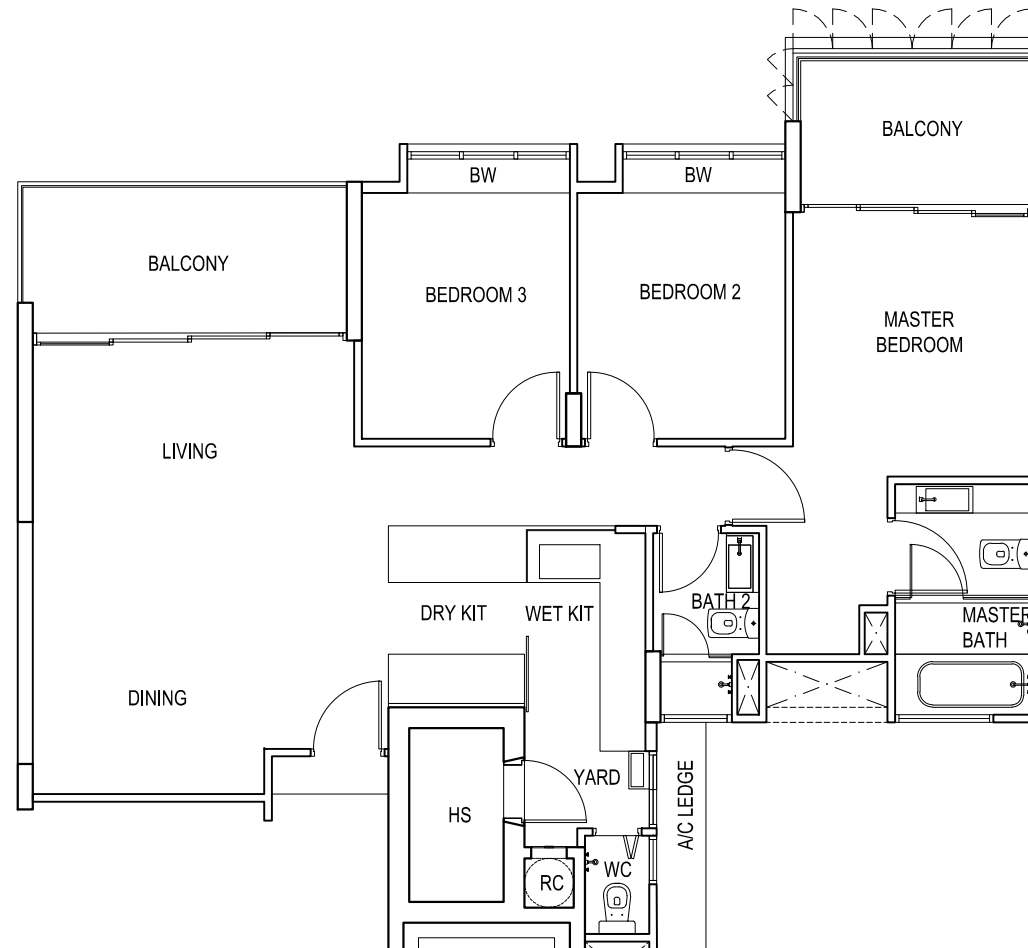
Approved Date : 23-04-2010
Approved Date : 07-06-2010

TYPE C3(b)

The below plan is subject to change as may be approved by the relevant authorities.



KEY PLAN 
THIS KEY PLAN IS NOT TO SCALE



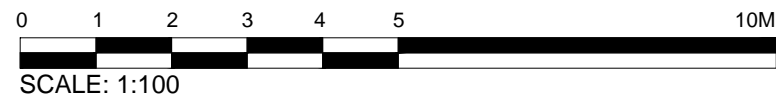
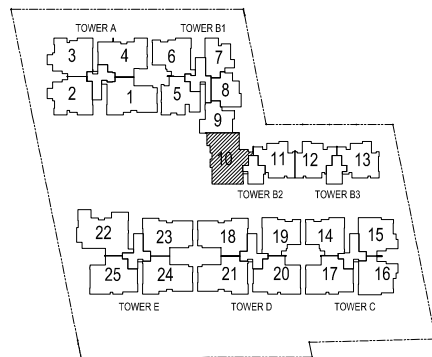
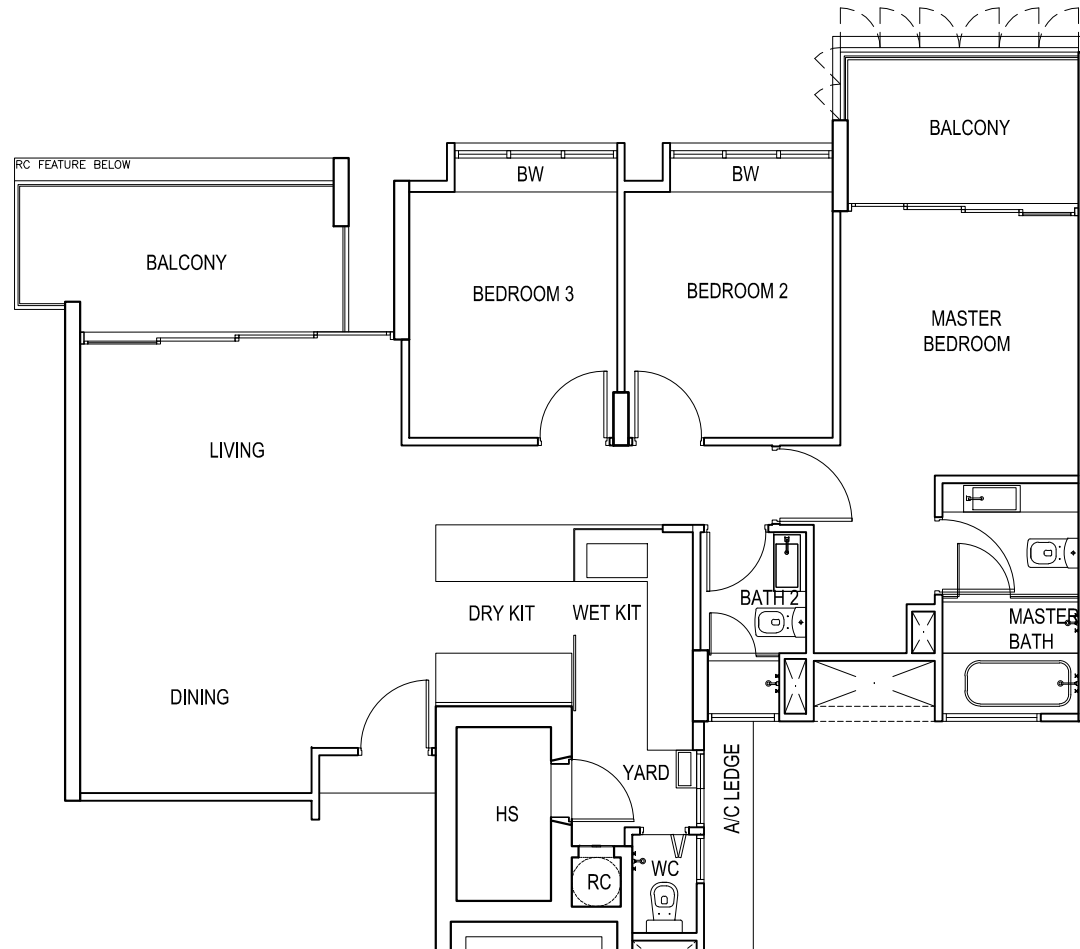
0 1 2 3 4 5 10M
SCALE: 1:100

BP No. A779-00820-2008-BP01
BP No. A779-00820-2008-BP02

Approved Date : 23-04-2010
Approved Date : 07-06-2010

TYPE C3(b1)

The below plan is subject to change as may be approved by the relevant authorities.



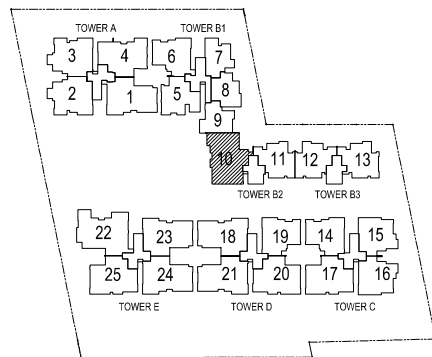
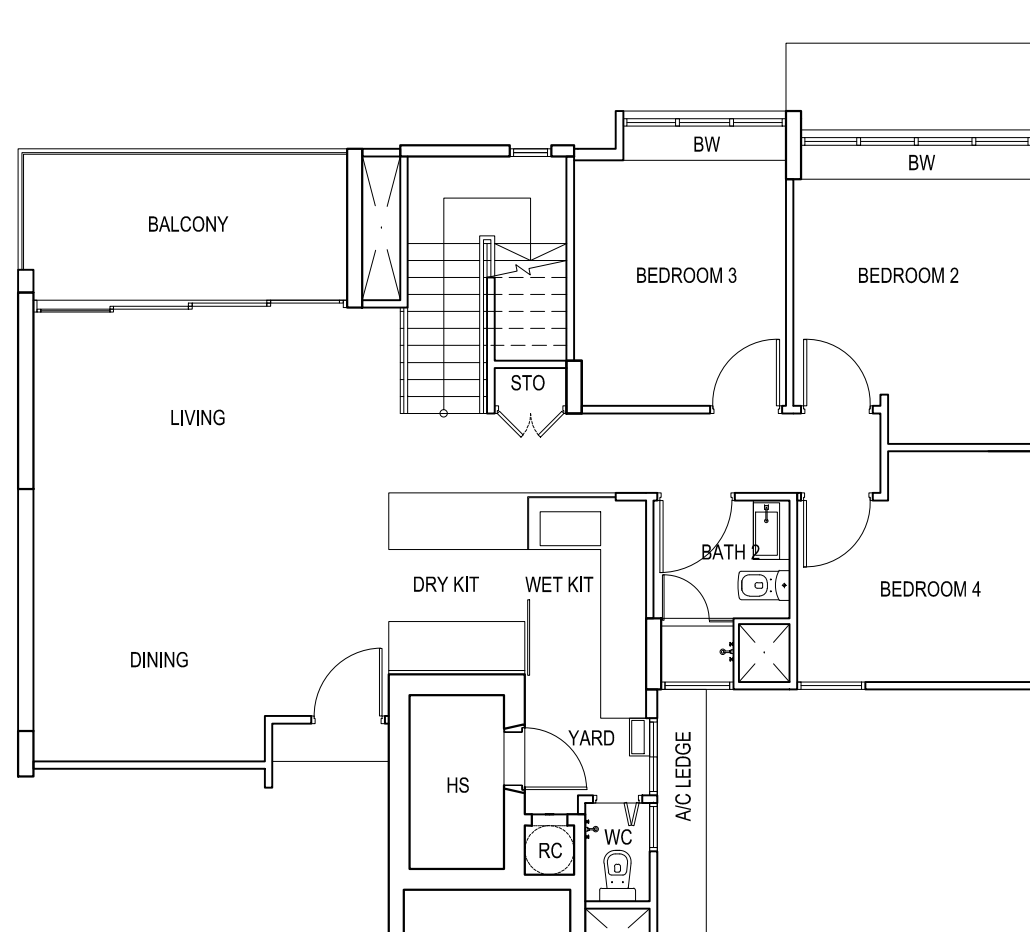
KEY PLAN 
THIS KEY PLAN IS NOT TO SCALE

BP No. A779-00820-2008-BP01
BP No. A779-00820-2008-BP02

Approved Date : 23-04-2010
Approved Date : 07-06-2010

TYPE D3(b)

The below plan is subject to change as may be approved by the relevant authorities.



KEY PLAN
THIS KEY PLAN IS NOT TO SCALE

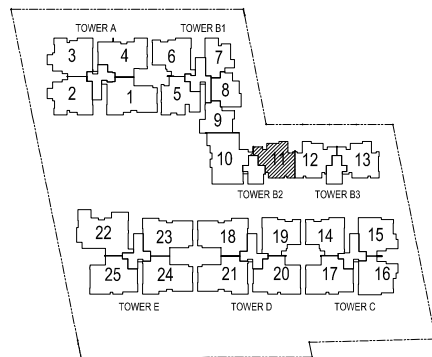
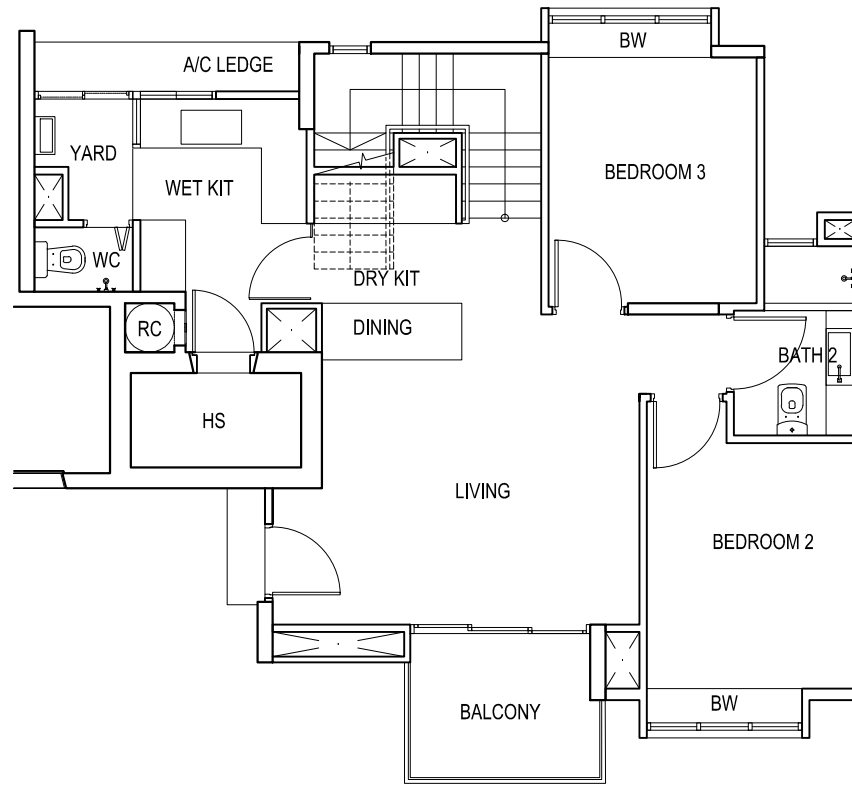
0 1 2 3 4 5 10M
SCALE: 1:100

BP No. A779-00820-2008-BP01
BP No. A779-00820-2008-BP02

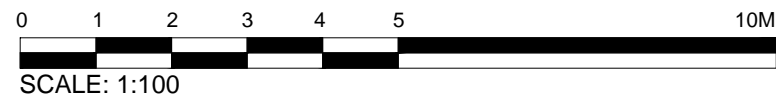
Approved Date : 23-04-2010
Approved Date : 07-06-2010

TYPE C8(b1)

The below plan is subject to change as may be approved by the relevant authorities.



KEY PLAN
THIS KEY PLAN IS NOT TO SCALE



BP No. A779-00820-2008-BP01
BP No. A779-00820-2008-BP02

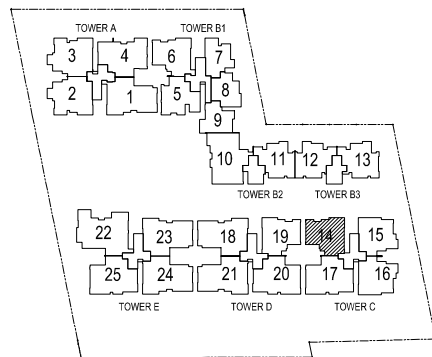
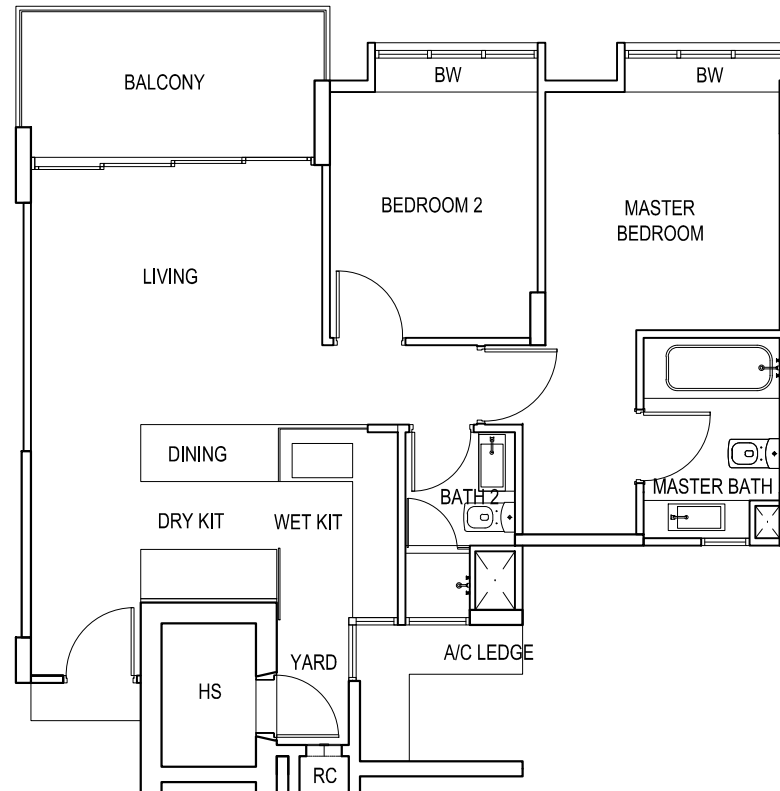
Approved Date : 23-04-2010
Approved Date : 07-06-2010

THE SOUND

UNIT #02-14
UNIT #03-14
UNIT #04-14

TYPE B1(b)

The below plan is subject to change as may be approved by the relevant authorities.



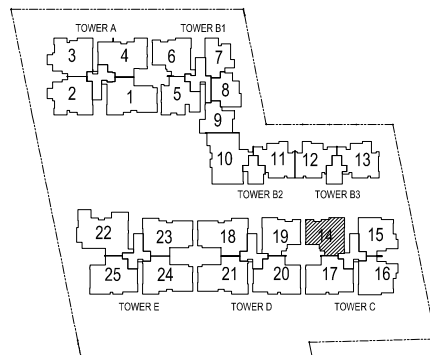
KEY PLAN 
THIS KEY PLAN IS NOT TO SCALE

0 1 2 3 4 5 10M
SCALE: 1:100

BP No. A779-00820-2008-BP01
BP No. A779-00820-2008-BP02

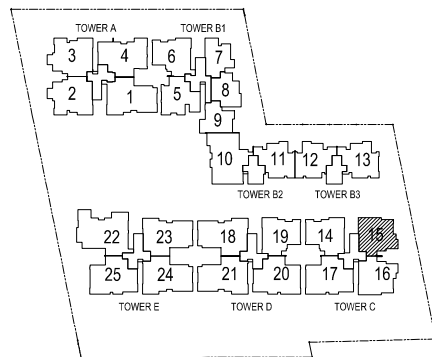
Approved Date : 23-04-2010
Approved Date : 07-06-2010

The below plan is subject to change as may be approved by the relevant authorities.

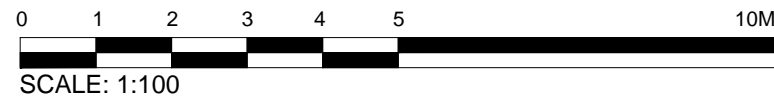
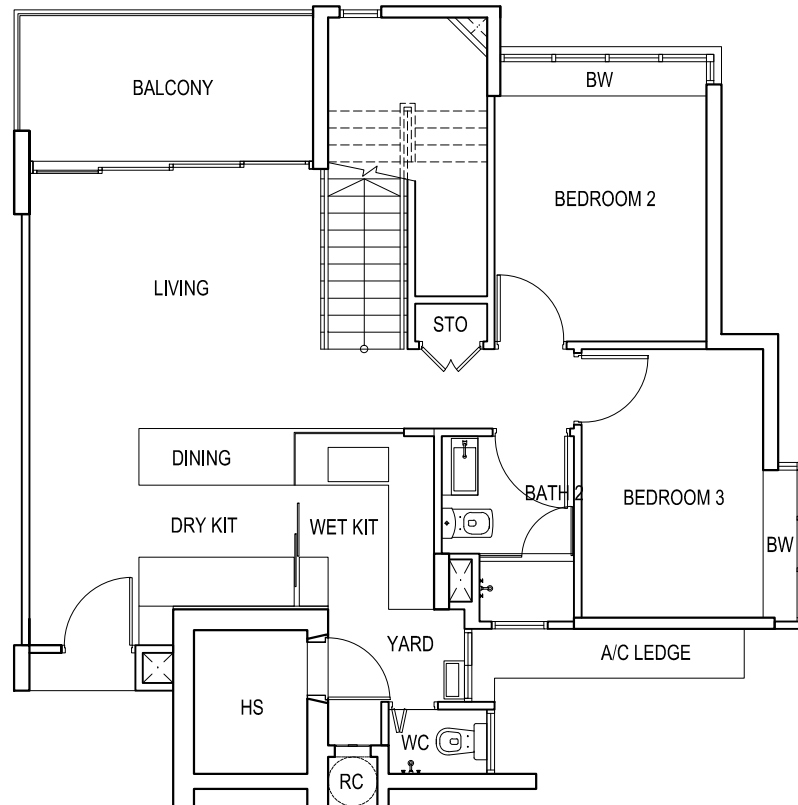


TYPE C9(b)

The below plan is subject to change as may be approved by the relevant authorities.



KEY PLAN 
THIS KEY PLAN IS NOT TO SCALE

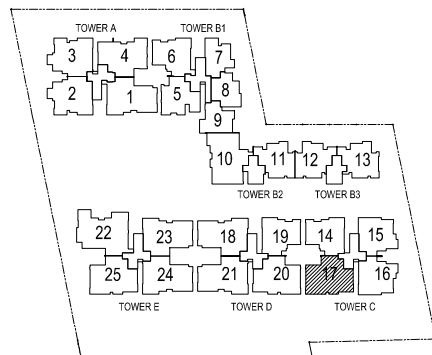
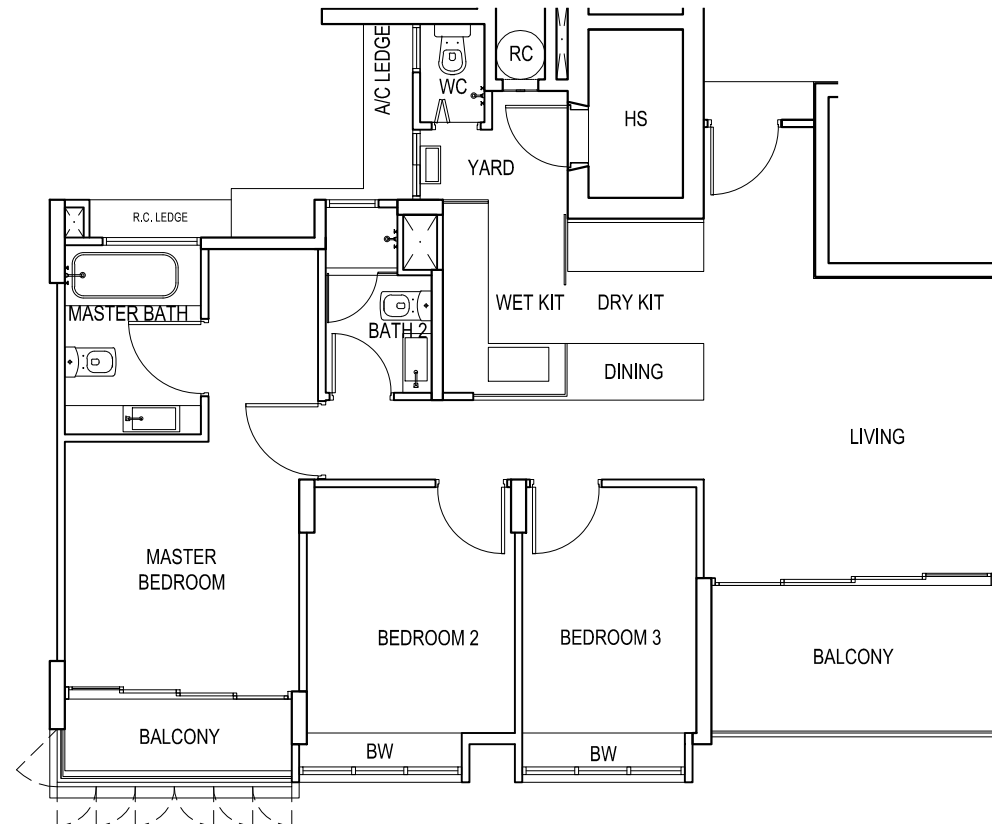


BP No. A779-00820-2008-BP01
BP No. A779-00820-2008-BP02

Approved Date : 23-04-2010
Approved Date : 07-06-2010

TYPE C4c(b)

The below plan is subject to change as may be approved by the relevant authorities.



KEY PLAN
THIS KEY PLAN IS NOT TO SCALE



BP No. A779-00820-2008-BP01
BP No. A779-00820-2008-BP02

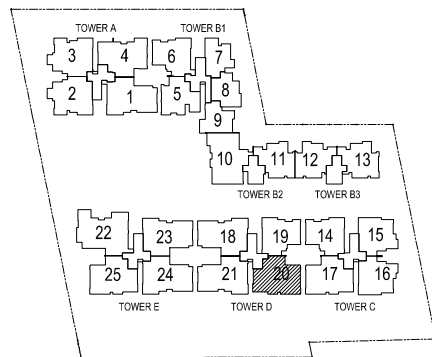
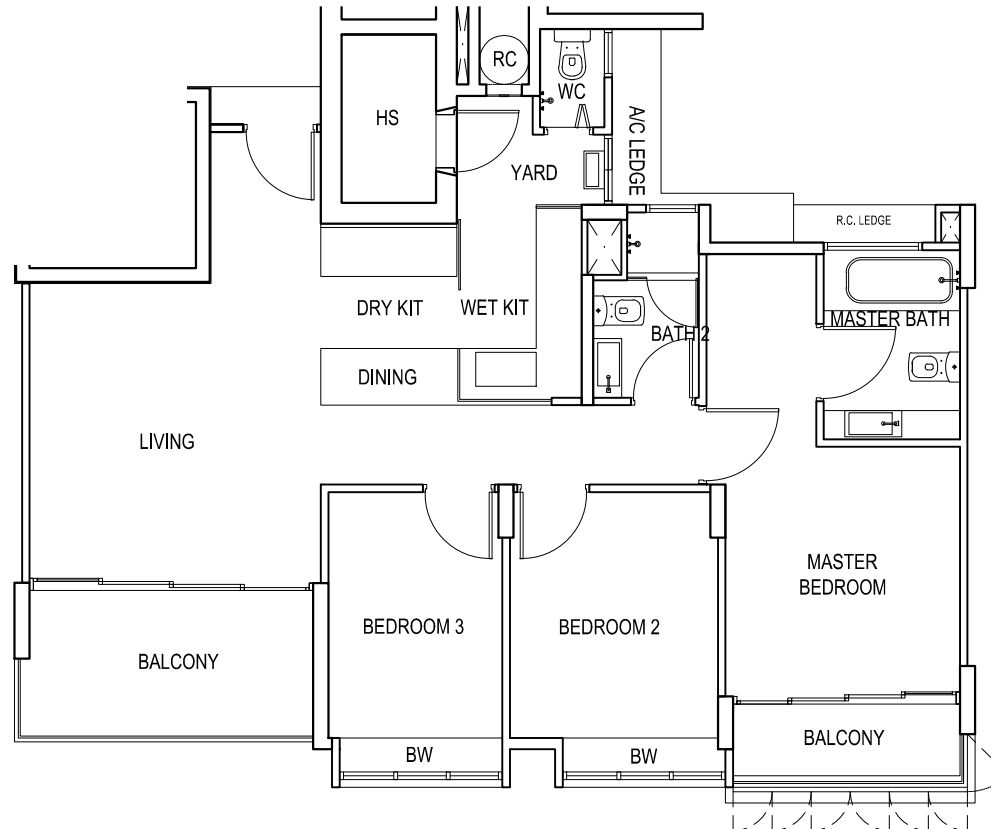
Approved Date : 23-04-2010
Approved Date : 07-06-2010

THE SOUND

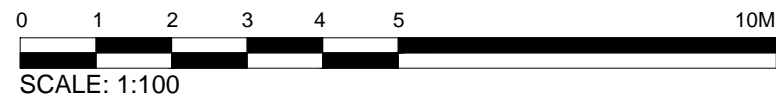
UNIT #02-20
UNIT #03-20
UNIT #04-20

TYPE C4c(b)

The below plan is subject to change as may be approved by the relevant authorities.



KEY PLAN
THIS KEY PLAN IS NOT TO SCALE

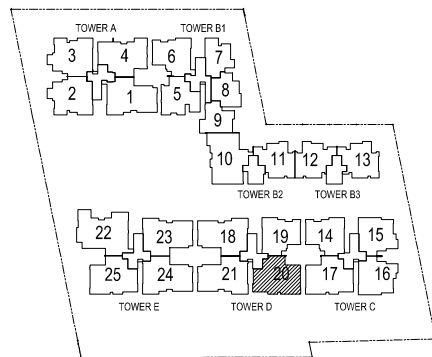
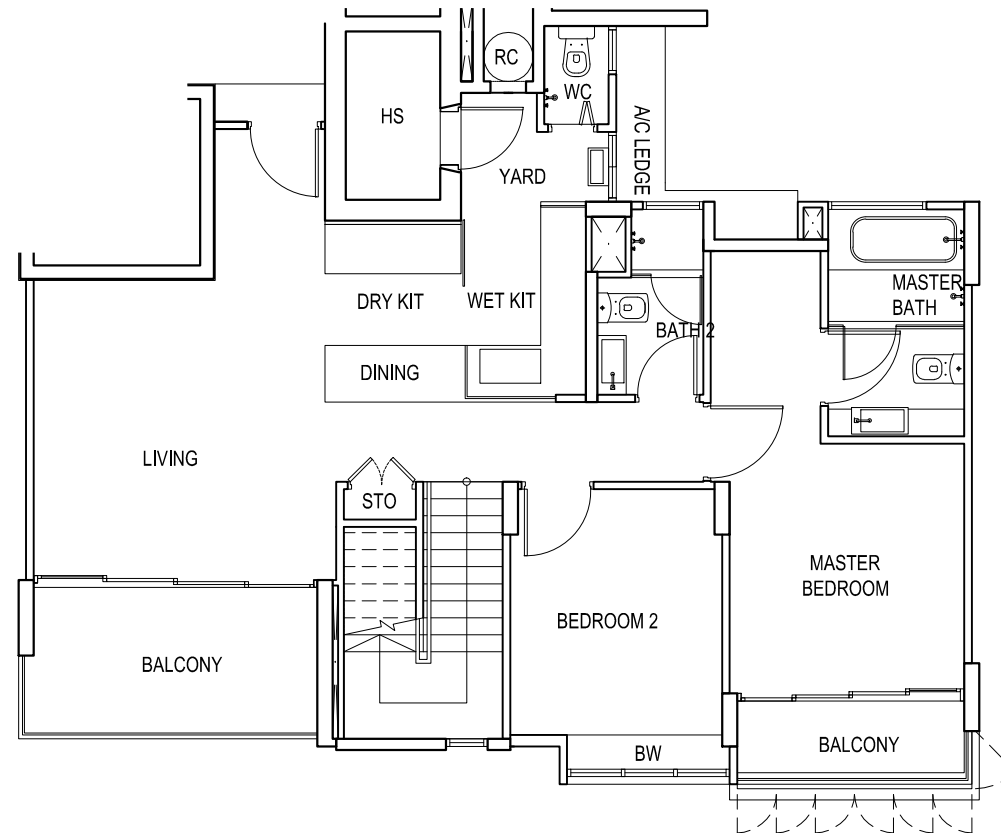


BP No. A779-00820-2008-BP01
BP No. A779-00820-2008-BP02

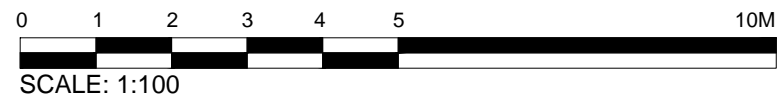
Approved Date : 23-04-2010
Approved Date : 07-06-2010

TYPE D4c(b)

The below plan is subject to change as may be approved by the relevant authorities.



KEY PLAN
THIS KEY PLAN IS NOT TO SCALE

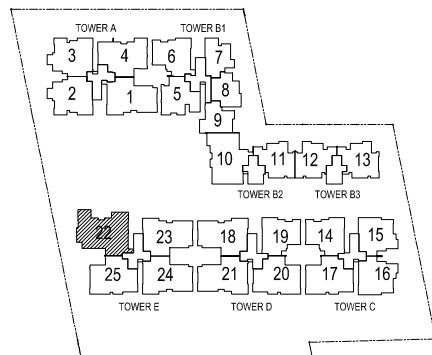
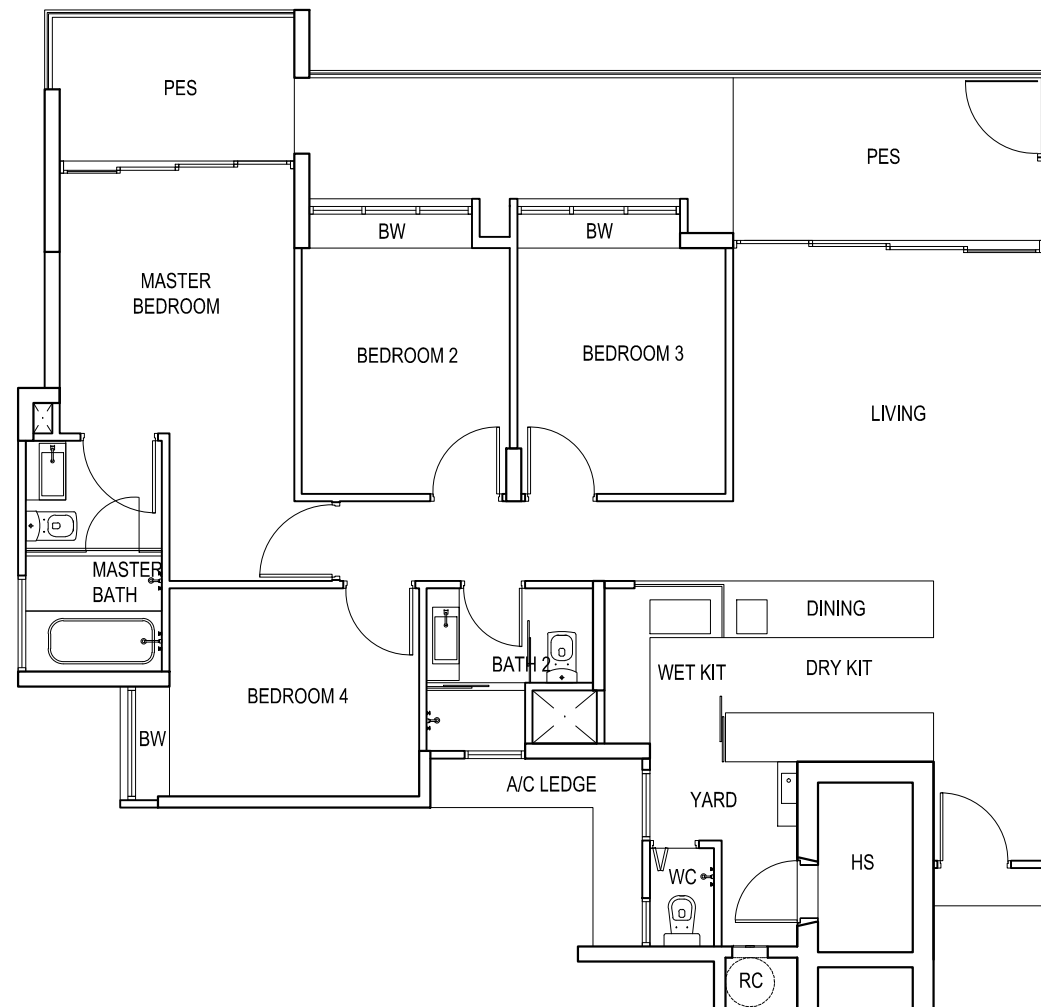


BP No. A779-00820-2008-BP01
BP No. A779-00820-2008-BP02

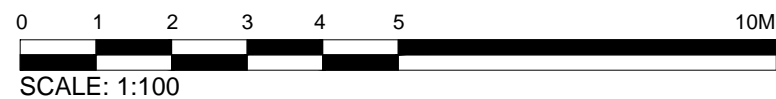
Approved Date : 23-04-2010
Approved Date : 07-06-2010

TYPE D6(p)

The below plan is subject to change as may be approved by the relevant authorities.



KEY PLAN 
THIS KEY PLAN IS NOT TO SCALE



BP No. A779-00820-2008-BP01
BP No. A779-00820-2008-BP02

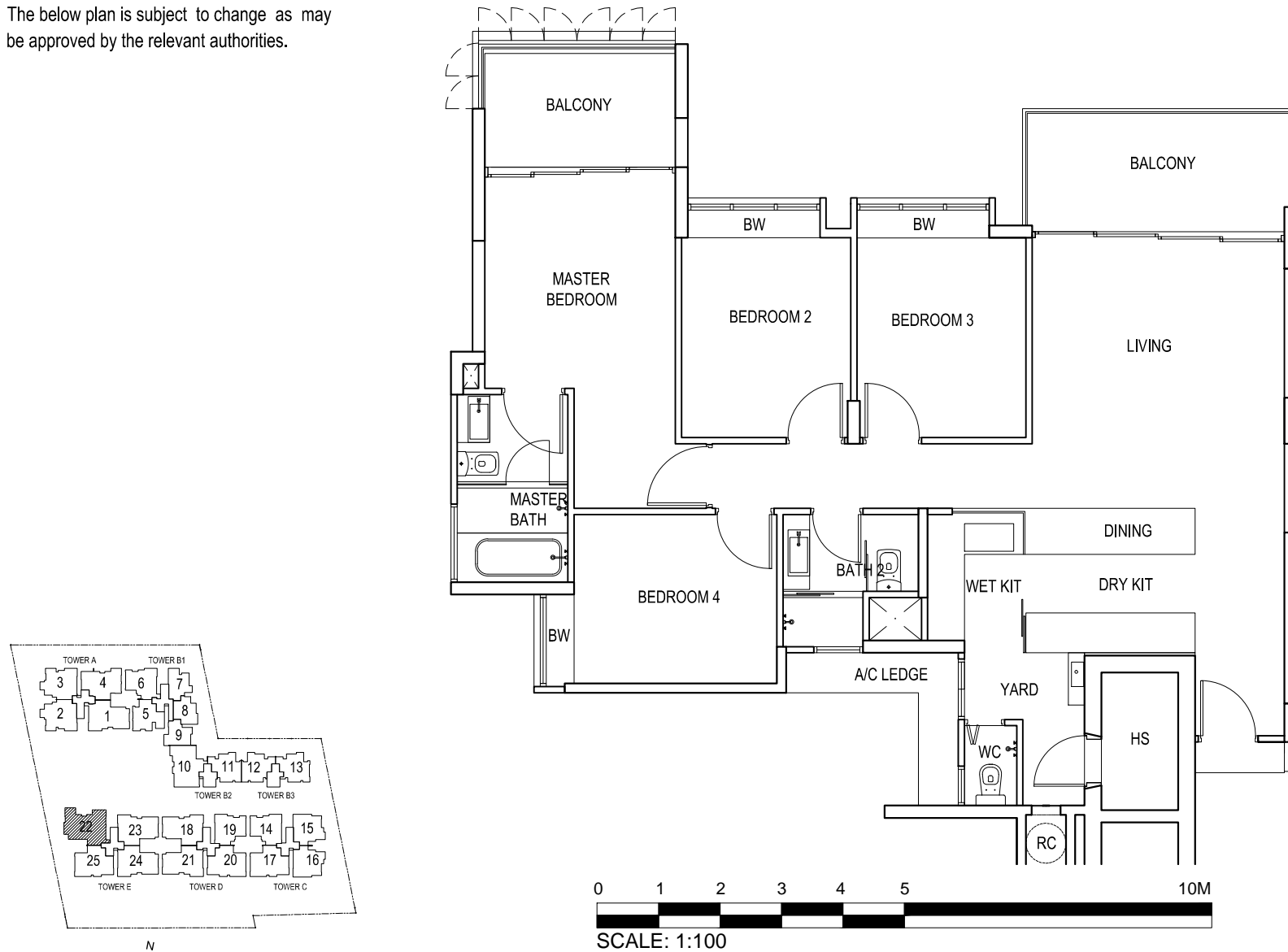
Approved Date : 23-04-2010
Approved Date : 07-06-2010

THE SOUND

UNIT #02-22
UNIT #03-22
UNIT #04-22

TYPE D6(b)

The below plan is subject to change as may be approved by the relevant authorities.

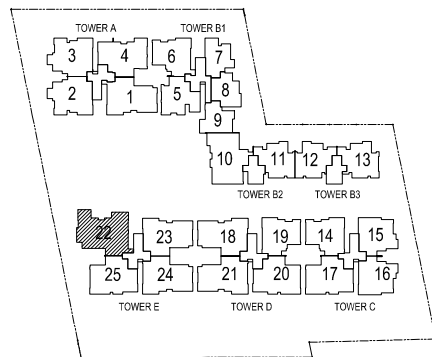
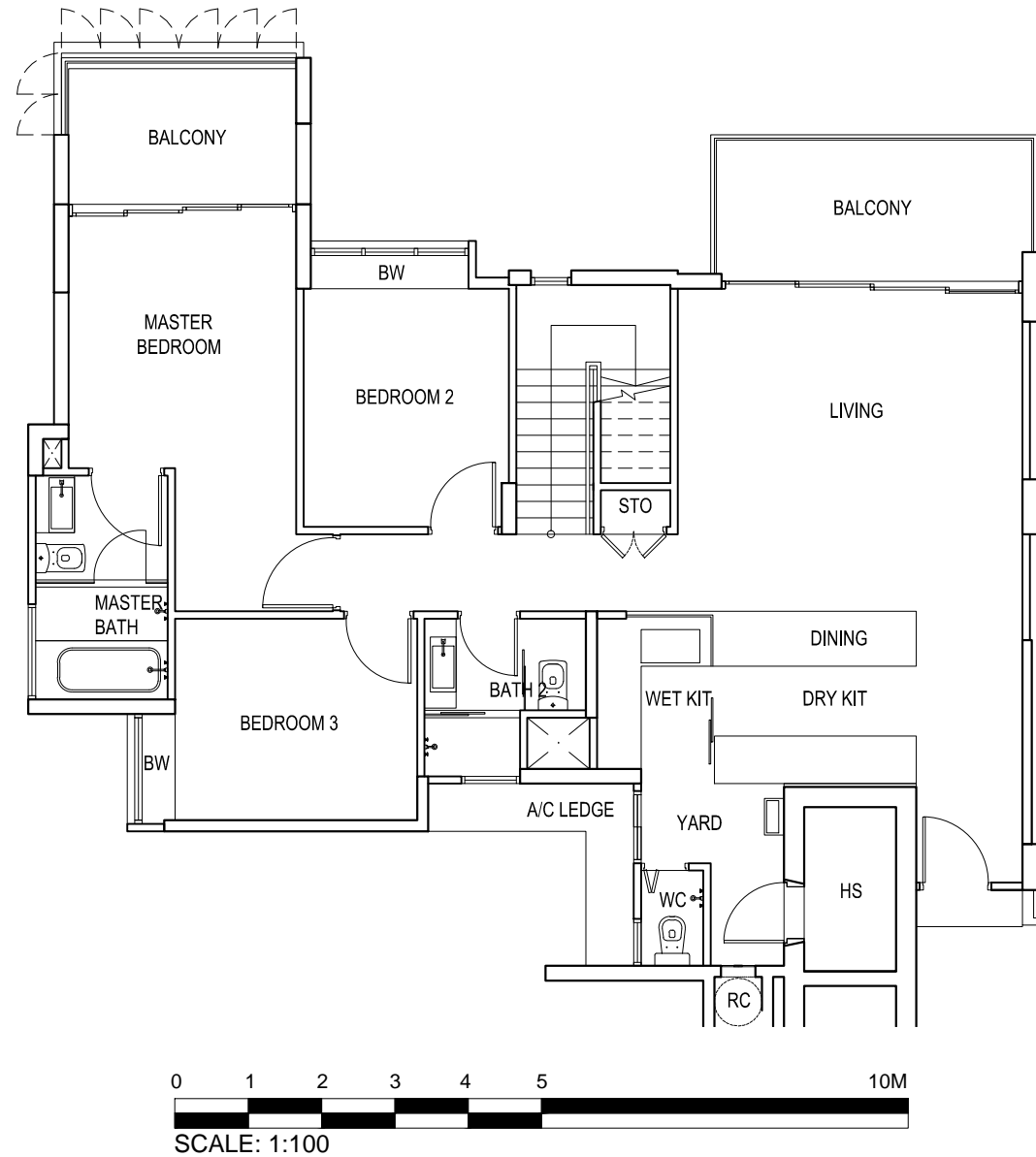


BP No. A779-00820-2008-BP01
BP No. A779-00820-2008-BP02

Approved Date : 23-04-2010
Approved Date : 07-06-2010

TYPE E1c(b)

The below plan is subject to change as may be approved by the relevant authorities.



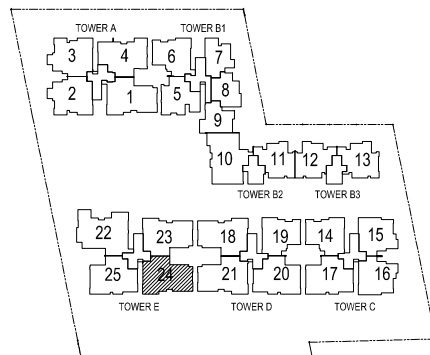
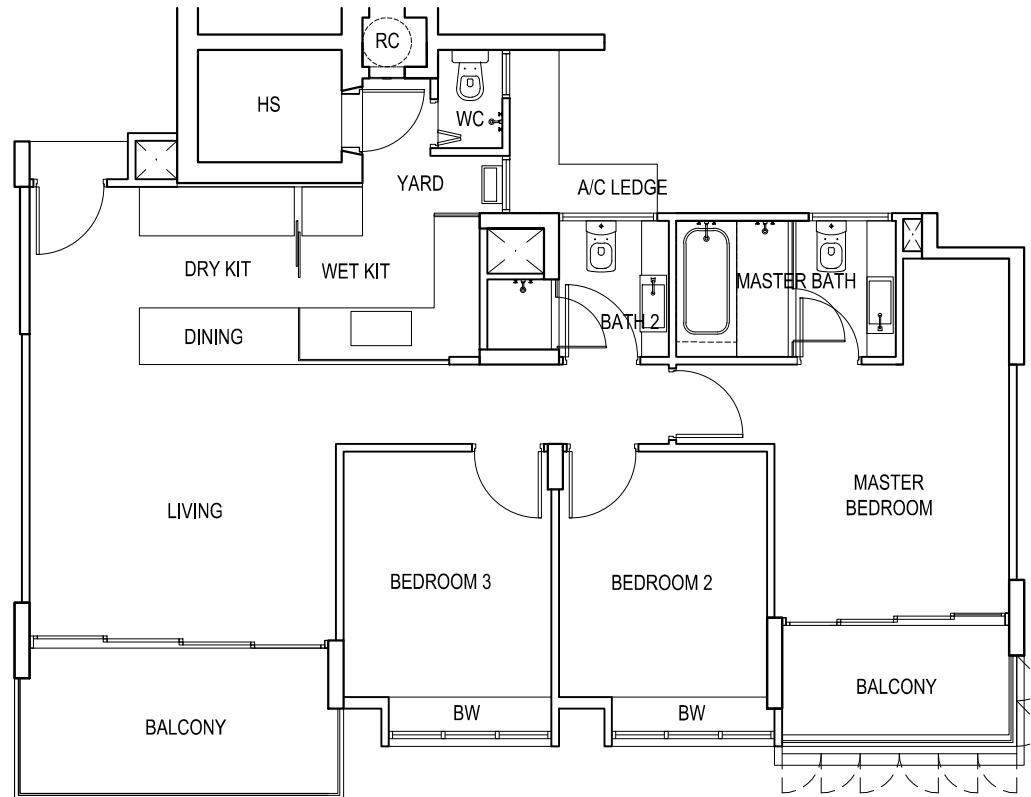
KEY PLAN 
THIS KEY PLAN IS NOT TO SCALE

BP No. A779-00820-2008-BP01
BP No. A779-00820-2008-BP02

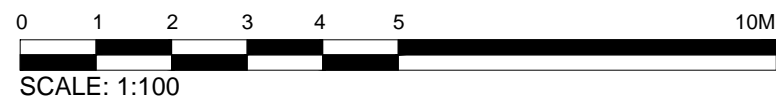
Approved Date : 23-04-2010
Approved Date : 07-06-2010

TYPE C5(b1)

The below plan is subject to change as may be approved by the relevant authorities.



KEY PLAN
THIS KEY PLAN IS NOT TO SCALE



BP No. A779-00820-2008-BP01
BP No. A779-00820-2008-BP02

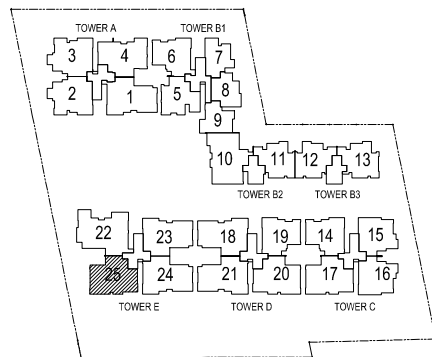
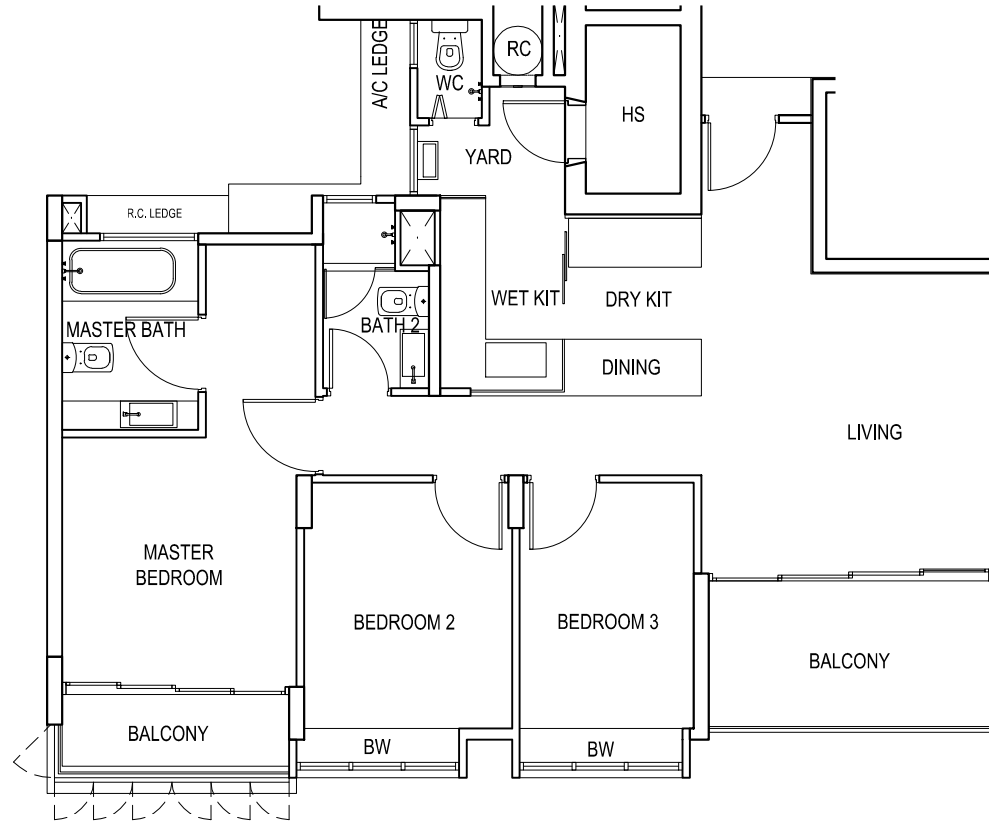
Approved Date : 23-04-2010
Approved Date : 07-06-2010

THE SOUND

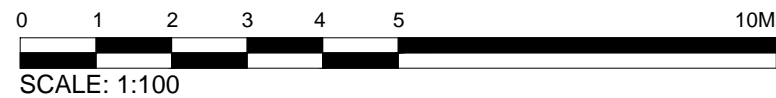
UNIT #02-25
UNIT #03-25
UNIT #04-25

TYPE C4ca(b)

The below plan is subject to change as may be approved by the relevant authorities.



KEY PLAN
THIS KEY PLAN IS NOT TO SCALE



BP No. A779-00820-2008-BP01
BP No. A779-00820-2008-BP02

Approved Date : 23-04-2010
Approved Date : 07-06-2010