

Fraser's Unique Living Space Concepts

VISTAhome
WIDE FRONTAGE-VIEW

Experience a home perfectly suited to your lifestyle from the Fraser's Living Space Concepts collection.

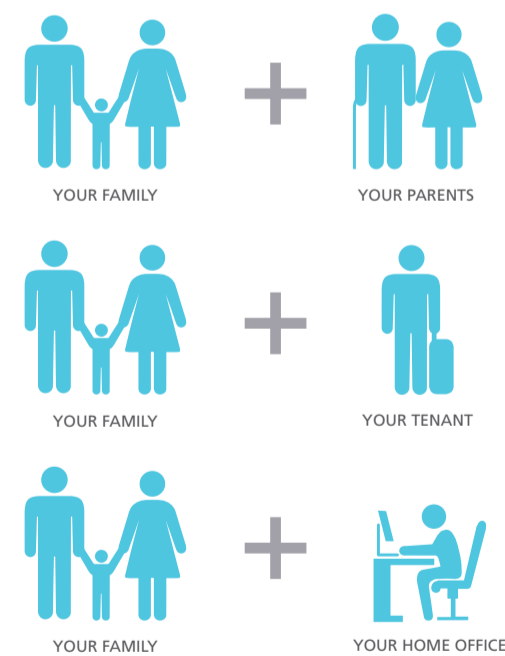
VERANDAHhome
PRIVATE BALCONY-VIEW

Conceptualized with innovative 2, 3, 4 -bedroom and penthouse units, enjoy an abundance of light, space and views with the Vista, Verandah and Vantage Homes. Each specially designed with its own distinctive features for maximum living comfort.

VANTAGEhome
BREEZY DUAL-VIEW

For extended families, the unique TRIO® Intergeneration Home by Fraser's awaits. Each home has two private entrances and two private living spaces for the best in multi-generational family living.

TRIO
BY FRASERS
THE INTERGENERATION HOME



Floor Plans

UNIT DISTRIBUTION

TOWER 11					TOWER 11A				TOWER 15				TOWER 15A						
FLOOR	1	2	3	4	FLOOR	5	6	7	8	FLOOR	9	10	11	12	FLOOR	13	14	15	16
14	B1(a)-VT	C-TR			14	C-TR	C1(b)-VT		PH	14	C1(b)-VT	C-TR	PH		14	C-TR	C1(b)-VT		
13	B1-VT	C-TR	B3-VT	B2-VT	13	C-TR	C1-VT	B2-VT	B3-VT	13	C1-VT	C-TR	B3-VT	B2-VT	13	C-TR	C1-VT	B2-VT	B3-VT
12	B1-VT	C-TR	B3-VT	B2-VT	12	C-TR	C1-VT	B2-VT	B3-VT	12	C1-VT	C-TR	B3-VT	B2-VT	12	C-TR	C1-VT	B2-VT	B3-VT
11	B1-VT	C-TR	B3-VT	B2-VT	11	C-TR	C1-VT	B2-VT	B3-VT	11	C1-VT	C-TR	B3-VT	B2-VT	11	C-TR	C1-VT	B2-VT	B3-VT
10	B1-VT	C-TR	B3-VT	B2-VT	10	C-TR	C1-VT	B2-VT	B3-VT	10	C1-VT	C-TR	B3-VT	B2-VT	10	C-TR	C1-VT	B2-VT	B3-VT
9	B1-VT	C-TR	B3-VT	B2-VT	9	C-TR	C1-VT	B2-VT	B3-VT	9	C1-VT	C-TR	B3-VT	B2-VT	9	C-TR	C1-VT	B2-VT	B3-VT
8	B1-VT	C-TR	B3-VT	B2-VT	8	C-TR	C1-VT	B2-VT	B3-VT	8	C1-VT	C-TR	B3-VT	B2-VT	8	C-TR	C1-VT	B2-VT	B3-VT
7	B1-VT	C-TR	B3-VT	B2-VT	7	C-TR	C1-VT	B2-VT	B3-VT	7	C1-VT	C-TR	B3-VT	B2-VT	7	C-TR	C1-VT	B2-VT	B3-VT
6	B1-VT	C-TR	B3-VT	B2-VT	6	C-TR	C1-VT	B2-VT	B3-VT	6	C1-VT	C-TR	B3-VT	B2-VT	6	C-TR	C1-VT	B2-VT	B3-VT
5	B1-VT	C-TR	B3-VT	B2-VT	5	C-TR	C1-VT	B2-VT	B3-VT	5	C1-VT	C-TR	B3-VT	B2-VT	5	C-TR	C1-VT	B2-VT	B3-VT
4	B1-VT	C-TR	B3-VT	B2-VT	4	C-TR	C1-VT	B2-VT	B3-VT	4	C1-VT	C-TR	B3-VT	B2-VT	4	C-TR	C1-VT	B2-VT	B3-VT
3	B1-VT	C-TR	B3-VT	B2-VT	3	C-TR	C1-VT	B2-VT	B3-VT	3	C1-VT	C-TR	B3-VT	B2-VT	3	C-TR	C1-VT	B2-VT	B3-VT
2	B1(P1)-VT	C(P1)-TR	B3-VT	B2-VT	2	C(P)-TR	C1(P)-VT	B2-VT	B3-VT	2	C1(P)-VT	C(P)-TR	B3-VT	B2-VT	2	C(P)-TR	C1(P)-VT	B2-VT	B3-VT
1			B3(P)-VT	B2(P)-VT	1			B2(P)-VT	B3(P)-VT	1			B3(P)-VT	B2(P)-VT	1			B2(P)-VT	B3(P)-VT

Note: DSTA screening may be provided to Block 11 unit no: #14-01

Note: DSTA screening may be provided to Block 11A unit no: #14-06 and #14-08

Note: DSTA screening may be provided to Block 15 unit no: #14-09 and #14-11

Note: DSTA screening may be provided to Block 15A unit no: #14-14

TOWER 17					TOWER 17A				TOWER 19				TOWER 19A						
FLOOR	17	18	19	20	FLOOR	21	22	23	24	FLOOR	25	26	27	28	FLOOR	29	30	31	32
14	C(a)-VT	C(a)-TRD	B-VH	A(a)	14	B1-VT	B-TR	B4-VG	B-VH	14	B-TR	C1-VT	B-VH	B4-VG	14	C1(a)-VT	B(a)-TR	B4(a)-VG	B-VH
13	C-VT	C-TRD	B-VH	A	13	B1-VT	B-TR	B4-VG	B-VH	13	B-TR	C1-VT	B-VH	B4-VG	13	C1-VT	B-TR	B4-VG	B-VH
12	C-VT	C-TRD	B-VH	A	12	B1-VT	B-TR	B4-VG	B-VH	12	B-TR	C1-VT	B-VH	B4-VG	12	C1-VT	B-TR	B4-VG	B-VH
11	C-VT	C-TRD	B-VH	A	11	B1-VT	B-TR	B4-VG	B-VH	11	B-TR	C1-VT	B-VH	B4-VG	11	C1-VT	B-TR	B4-VG	B-VH
10	C-VT	C-TRD	B-VH	A	10	B1-VT	B-TR	B4-VG	B-VH	10	B-TR	C1-VT	B-VH	B4-VG	10	C1-VT	B-TR	B4-VG	B-VH
9	C-VT	C-TRD	B-VH	A	9	B1-VT	B-TR	B4-VG	B-VH	9	B-TR	C1-VT	B-VH	B4-VG	9	C1-VT	B-TR	B4-VG	B-VH
8	C-VT	C-TRD	B-VH	A	8	B1-VT	B-TR	B4-VG	B-VH	8	B-TR	C1-VT	B-VH	B4-VG	8	C1-VT	B-TR	B4-VG	B-VH
7	C-VT	C-TRD	B-VH	A	7	B1-VT	B-TR	B4-VG	B-VH	7	B-TR	C1-VT	B-VH	B4-VG	7	C1-VT	B-TR	B4-VG	B-VH
6	C-VT	C-TRD	B-VH	A	6	B1-VT	B-TR	B4-VG	B-VH	6	B-TR	C1-VT	B-VH	B4-VG	6	C1-VT	B-TR	B4-VG	B-VH
5	C-VT	C-TRD	B-VH	A	5	B1-VT	B-TR	B4-VG	B-VH	5	B-TR	C1-VT	B-VH	B4-VG	5	C1-VT	B-TR	B4-VG	B-VH
4	C-VT	C-TRD	B-VH	A	4	B1-VT	B-TR	B4-VG	B-VH	4	B-TR	C1-VT	B-VH	B4-VG	4	C1-VT	B-TR	B4-VG	B-VH
3	C-VT	C-TRD	B-VH	A	3	B1-VT	B-TR	B4-VG	B-VH	3	B-TR	C1-VT	B-VH	B4-VG	3	C1-VT	B-TR	B4-VG	B-VH
2	C(P)-VT	C(P)-TRD	B(P)-VH	A(P)	2	B1(P)-VT	B(P)-TR	B4(P)-VG	B(P)-VH	2	B(P)-TR	C1(P)-VT	B(P)-VH	B4(P)-VG	2	C1(P)-VT	B(P1)-TR	B4(P)-VG	B(P)-VH
1					1					1					1				

Note: DSTA screening may be provided to Block 17 unit no: #14-17, #14-18 and #14-20

Note: DSTA screening may be provided to Block 19A unit no: #14-29, #14-30 and #14-31



TWIN FOUNTAINS

Where Life Is Celebrated Daily



Holistic Living

1. Water Reflexology
2. Villa Pool
3. Villa Spa
4. Spa Pool
5. Sun Deck
6. Sun Island
7. Water Lounger

3-G Fitness

12. 3-Generation Fitness Pod
13. Gymnasium
14. Tennis Court
15. 50m Swimming Pool
16. Exotic Garden Trail

Enchanting Nature

20. Enchanted Garden
21. Gateway Fountains
22. Wellness Fountains
23. Coral Falls
24. Boulder Falls
25. Eclectic Garden
26. Eugenia Garden With Resting Pavilion
27. Eucharis Garden With Resting Pavilion

Outdoor Dining

17. Spring Pavilion (BBQ)
18. Summer Pavilion (BBQ)
19. Function Room

Kids Adventure

8. Splash Pool
9. Children's Play Pool
10. Children's Playground
11. Adventure Fountains

28. Fountain Villa

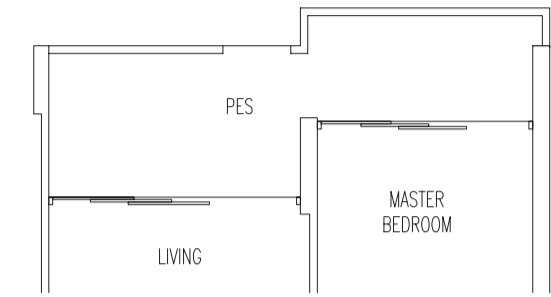
- Villa Pool
- Villa Spa
- Villa Fountains

29. Side Gate

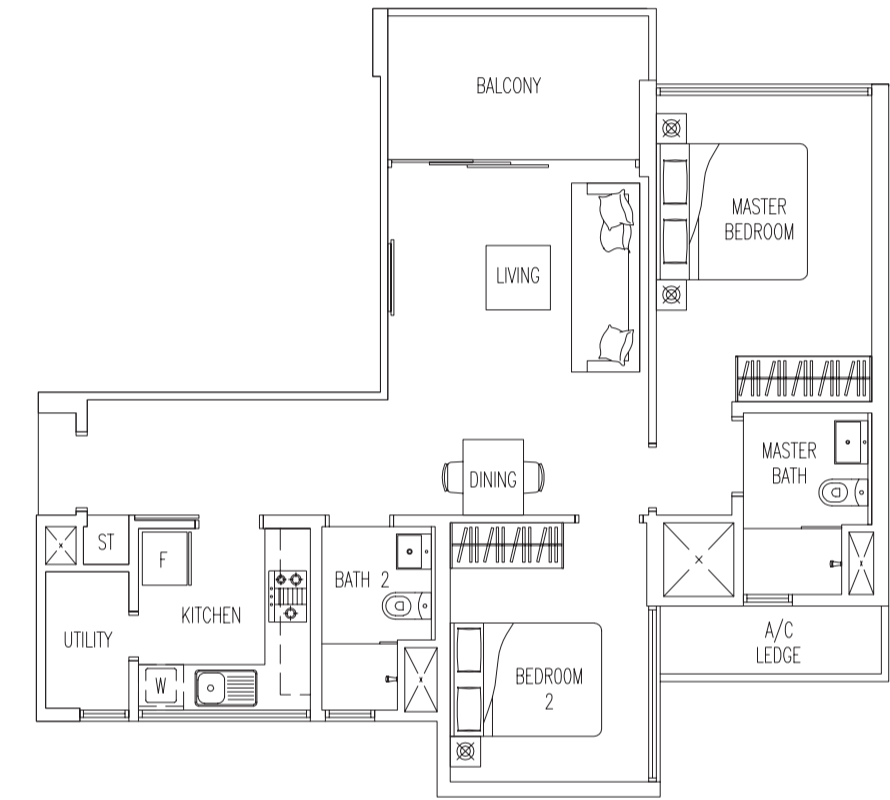
SUITES

SUITES 2-Bedroom

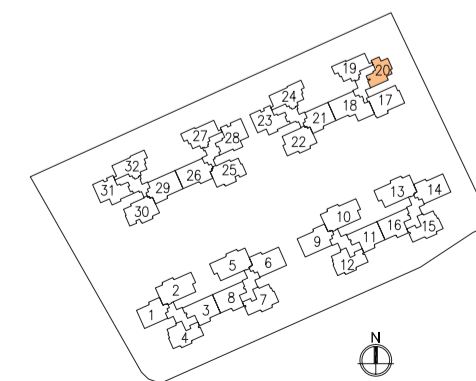
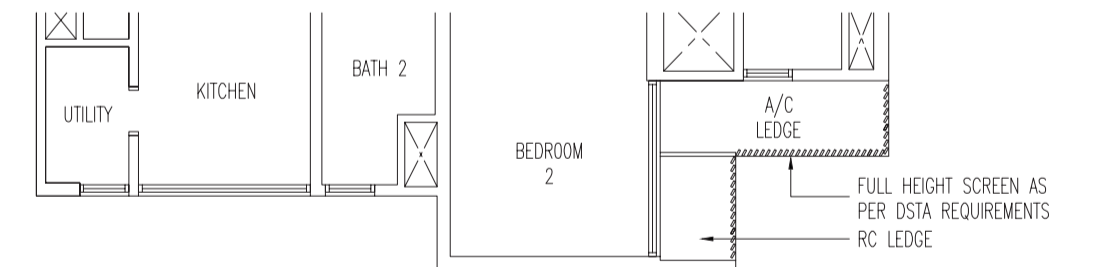
Type A(P)
82 sq m / 883 sq ft
#02-20



Type A
77 sq m / 829 sq ft
#03-20 To #13-20



Type A(a)
77 sq m / 829 sq ft
#14-20 - Open Balcony

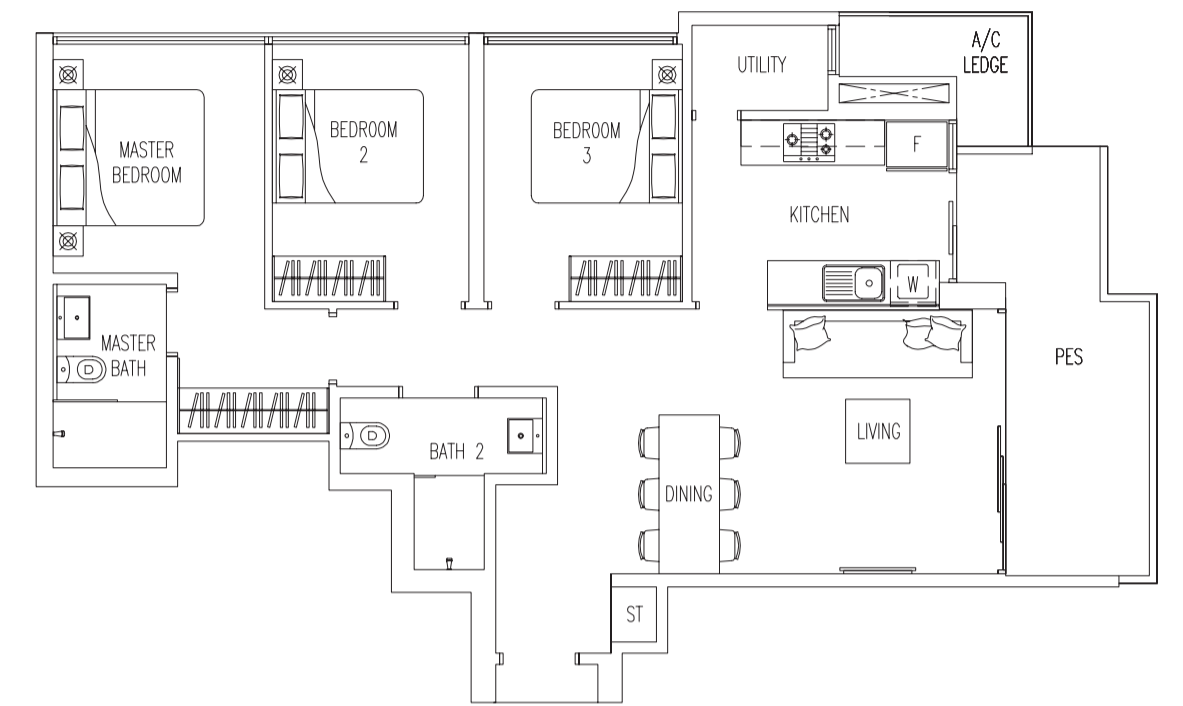


Area includes A/C ledge, balcony, PES, roof terrace. Some units are mirror images of the apartment plans shown in the brochure. Please refer to the key plans for orientation. The plans are subject to change as may be approved by the relevant authorities. All floor areas are approximate measurements only and are subject to government resurvey. Abbreviation : A/C ledge (Aircon Ledge), PES (Private Enclosed Space), and ST (Store).

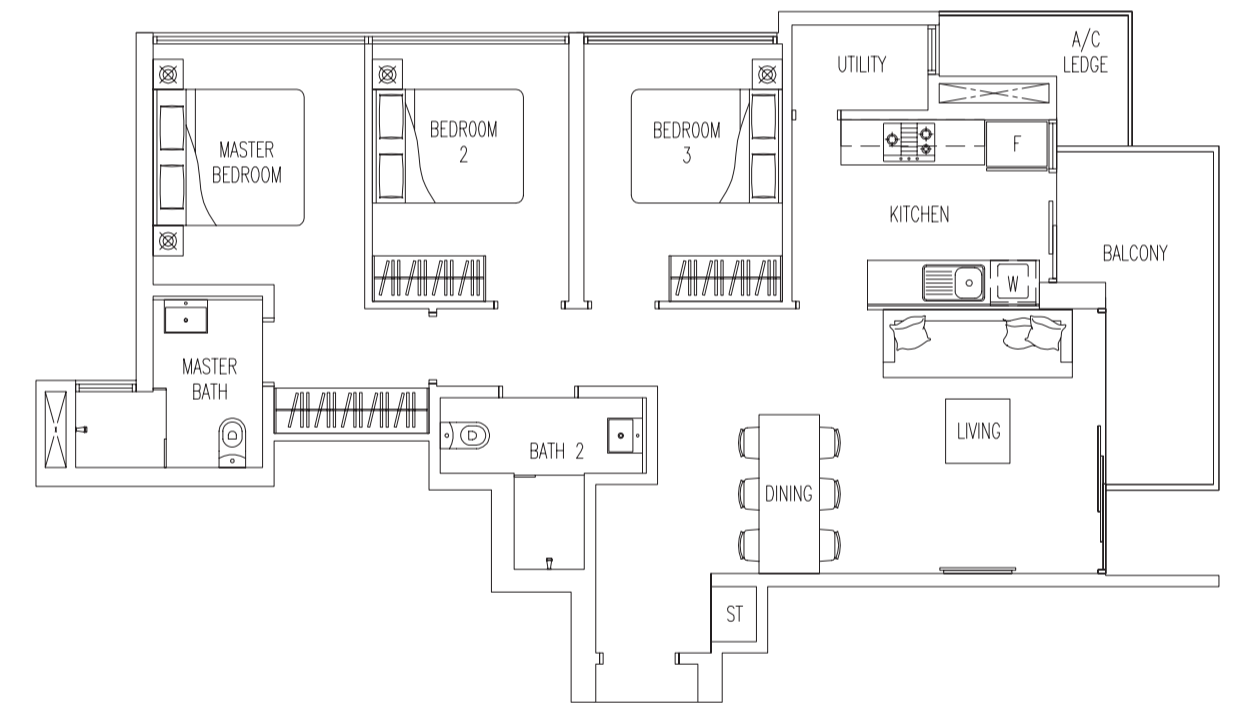
VERANDAHhome

3-Bedroom

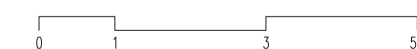
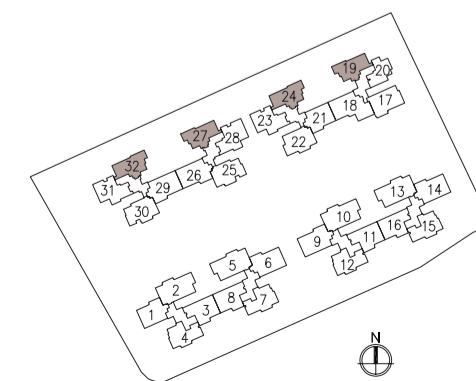
Type B(P)-VH
 98 sq m / 1055 sq ft
 #02-32
 #02-27 (mirror)
 #02-24
 #02-19 (mirror)



Type B-VH
 96 sq m / 1033 sq ft
 #03-32 To #13-32
 #03-27 To #13-27 (mirror)
 #03-24 To #13-24
 #03-19 To #13-19 (mirror)
 #14-32 - Open Balcony
 #14-27 - Open Balcony (mirror)
 #14-24 - Open Balcony
 #14-19 - Open Balcony (mirror)



VERANDAHhome
 PRIVATE BALCONY-VIEW



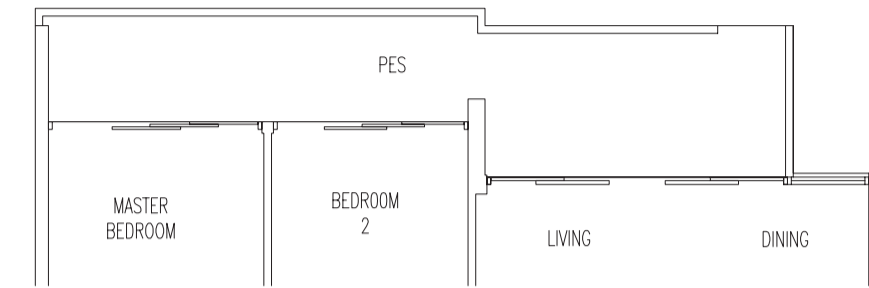
Area includes A/C ledge, balcony, PES, roof terrace. Some units are mirror images of the apartment plans shown in the brochure. Please refer to the key plans for orientation. The plans are subject to change as may be approved by the relevant authorities. All floor areas are approximate measurements only and are subject to government resurvey. Abbreviation : A/C ledge (Aircon Ledge), PES (Private Enclosed Space), and ST (Store).

VISTAhome

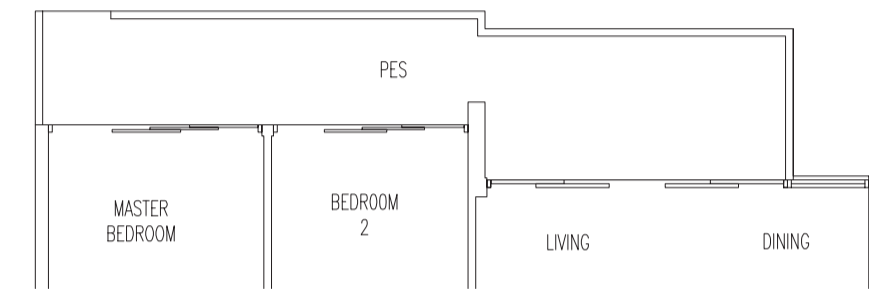
3-Bedroom



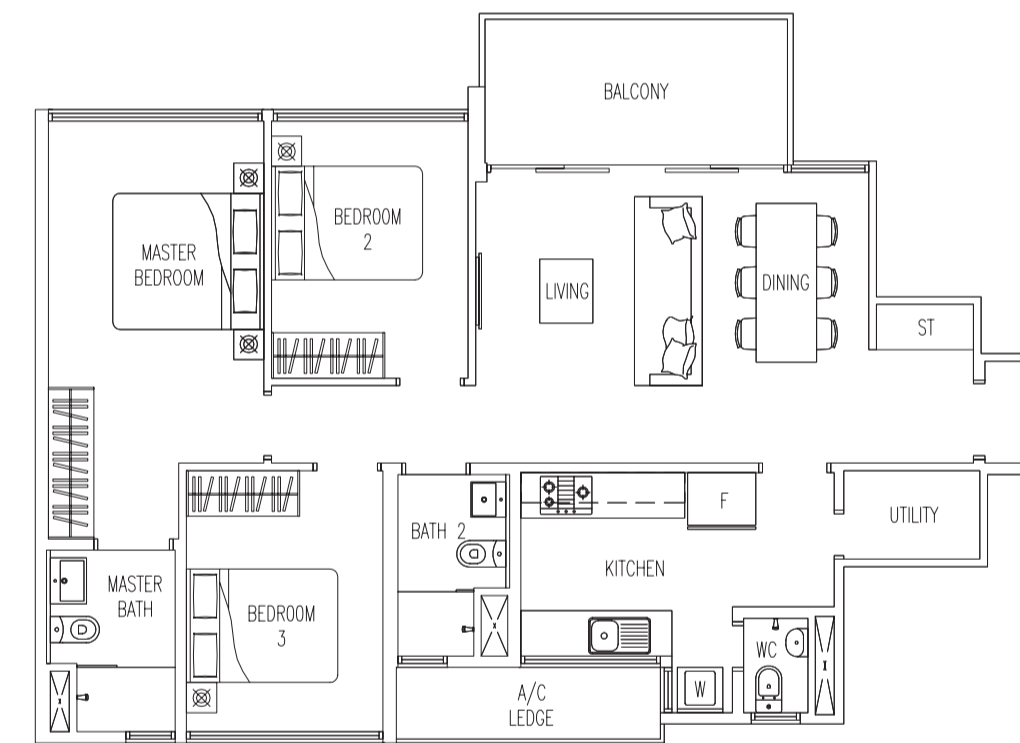
Type B1(P1)-VT
107 sq m / 1152 sq ft
#02-01



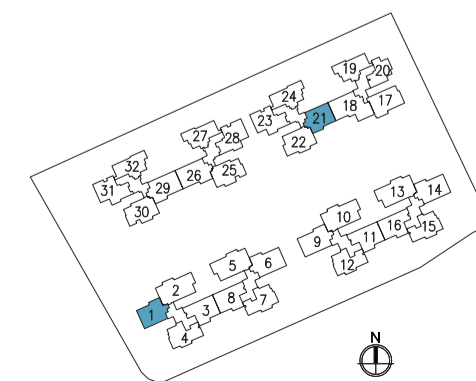
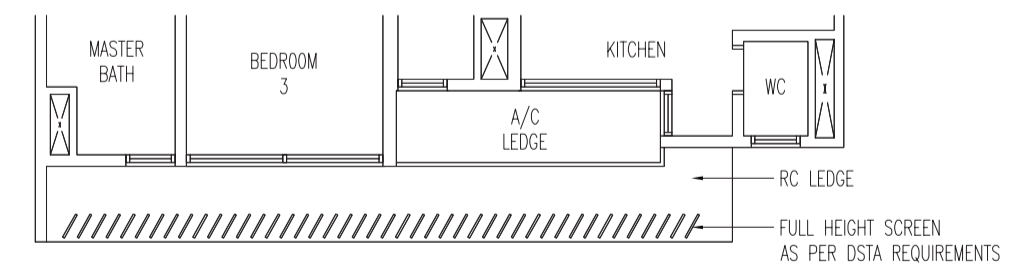
Type B1(P)-VT
107 sq m / 1152 sq ft
#02-21 (rotated)



Type B1-VT
98 sq m / 1055 sq ft
#03-21 To #13-21 (rotated)
#03-01 To #13-01
#14-21 - Open Balcony (rotated)



Type B1(a)-VT
98 sq m / 1055 sq ft
#14-01 - Open Balcony



Area includes A/C ledge, balcony, PES, roof terrace. Some units are mirror images of the apartment plans shown in the brochure. Please refer to the key plans for orientation. The plans are subject to change as may be approved by the relevant authorities. All floor areas are approximate measurements only and are subject to government resurvey. Abbreviation : A/C ledge (Aircon Ledge), PES (Private Enclosed Space), and ST (Store).

VISTAhome

3-Bedroom

Type B2-VT

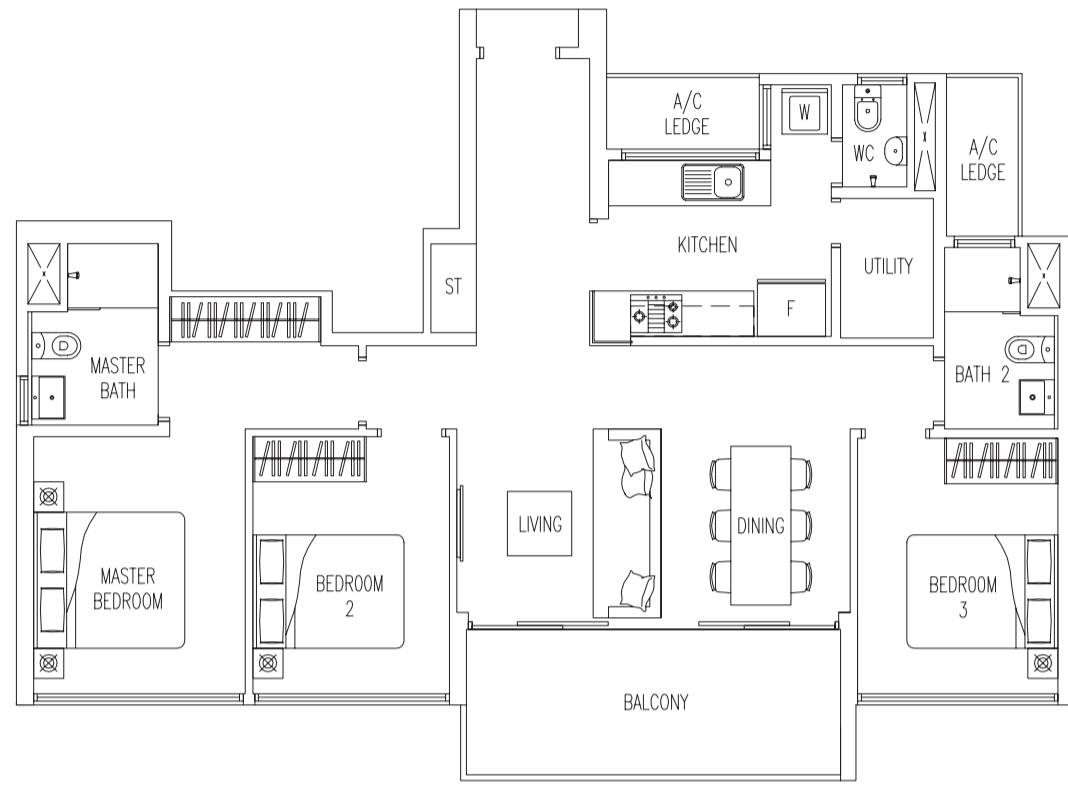
102 sq m / 1098 sq ft

#02-04 To #13-04 (mirror)

#02-07 To #13-07

#02-12 To #13-12 (mirror)

#02-15 To #13-15



Type B2(P)-VT

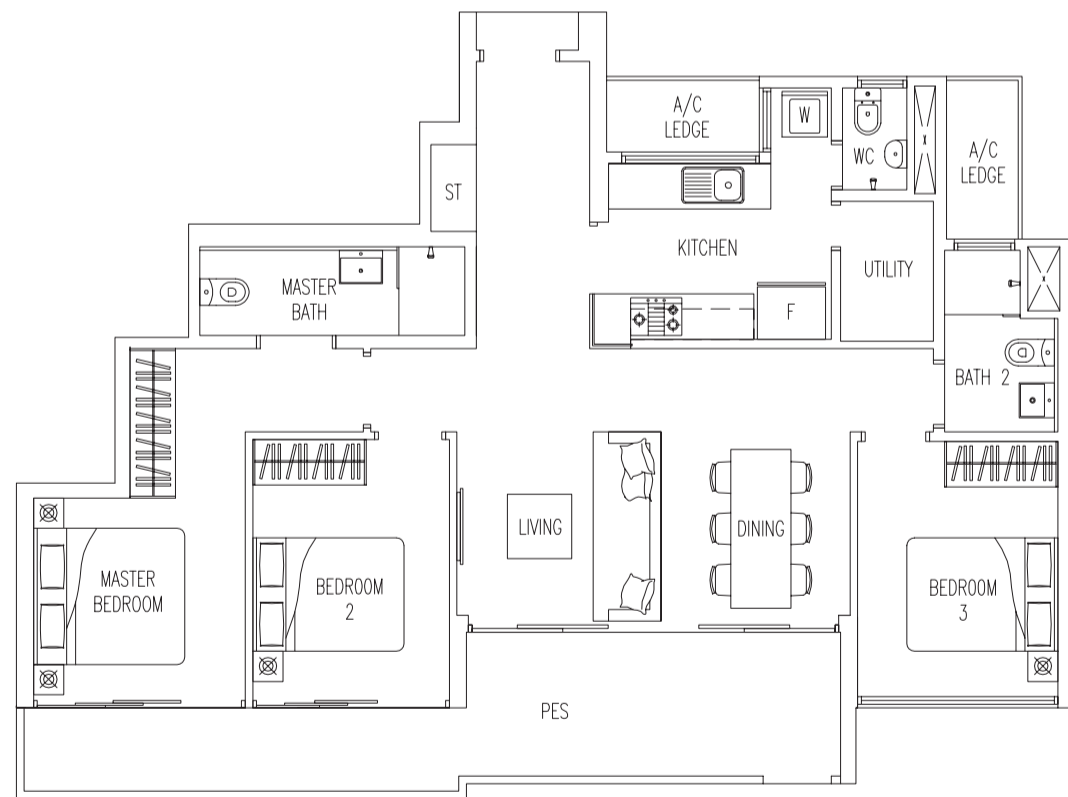
108 sq m / 1163 sq ft

#01-04 (mirror)

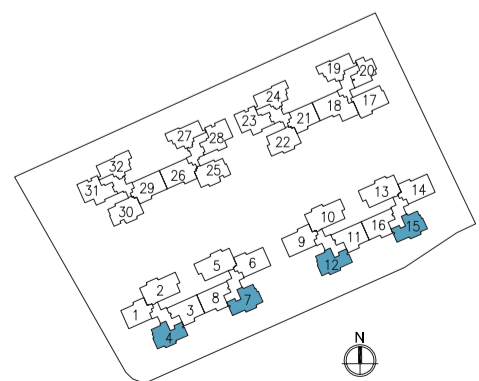
#01-07

#01-12 (mirror)

#01-15



Area includes A/C ledge, balcony, PES, roof terrace. Some units are mirror images of the apartment plans shown in the brochure. Please refer to the key plans for orientation. The plans are subject to change as may be approved by the relevant authorities. All floor areas are approximate measurements only and are subject to government resurvey. Abbreviation : A/C ledge (Aircon Ledge), PES (Private Enclosed Space), and ST (Store).



VISTAhome

3-Bedroom

Type B3-VT

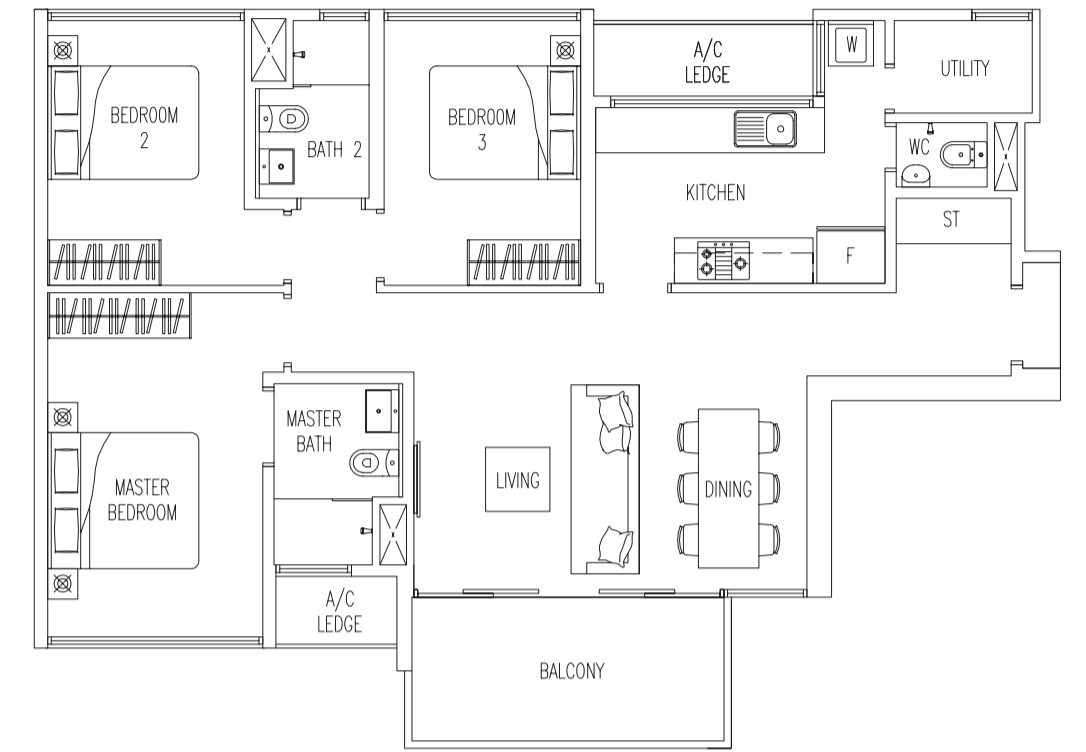
104 sq m / 1119 sq ft

#02-03 To #13-03 (mirror)

#02-08 To #13-08

#02-11 To #13-11 (mirror)

#02-16 To #13-16



Type B3(P)-VT

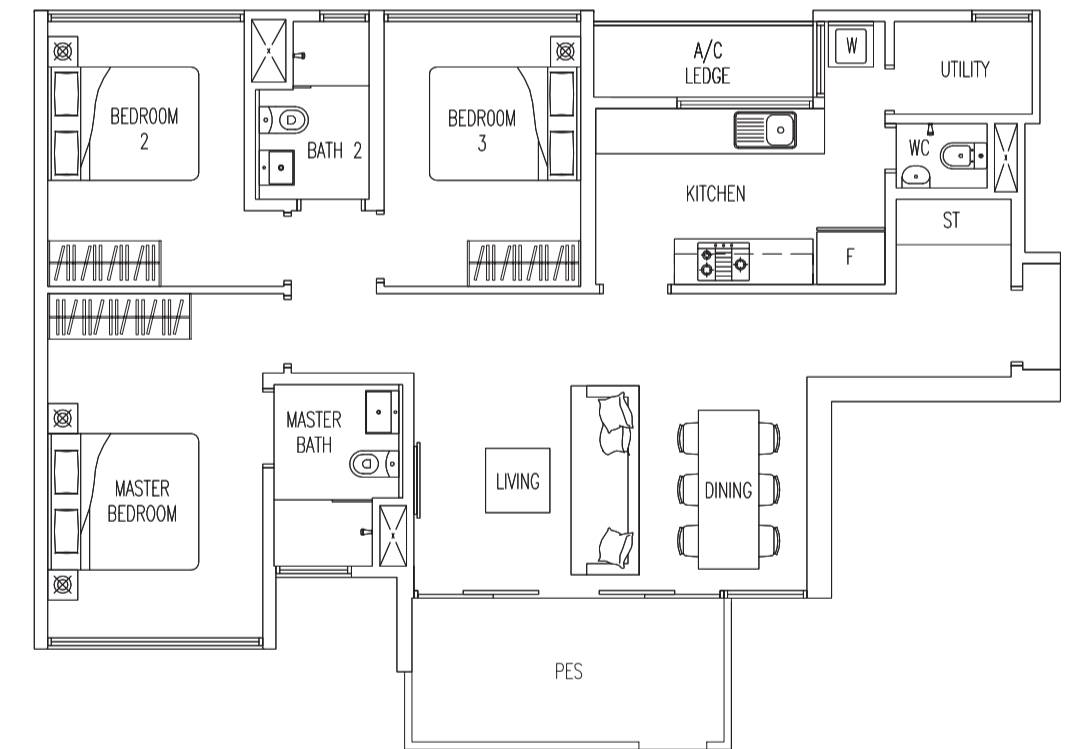
102 sq m / 1098 sq ft

#01-03 (mirror)

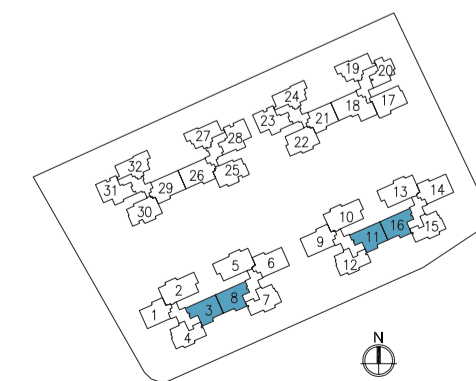
#01-08

#01-11 (mirror)

#01-16



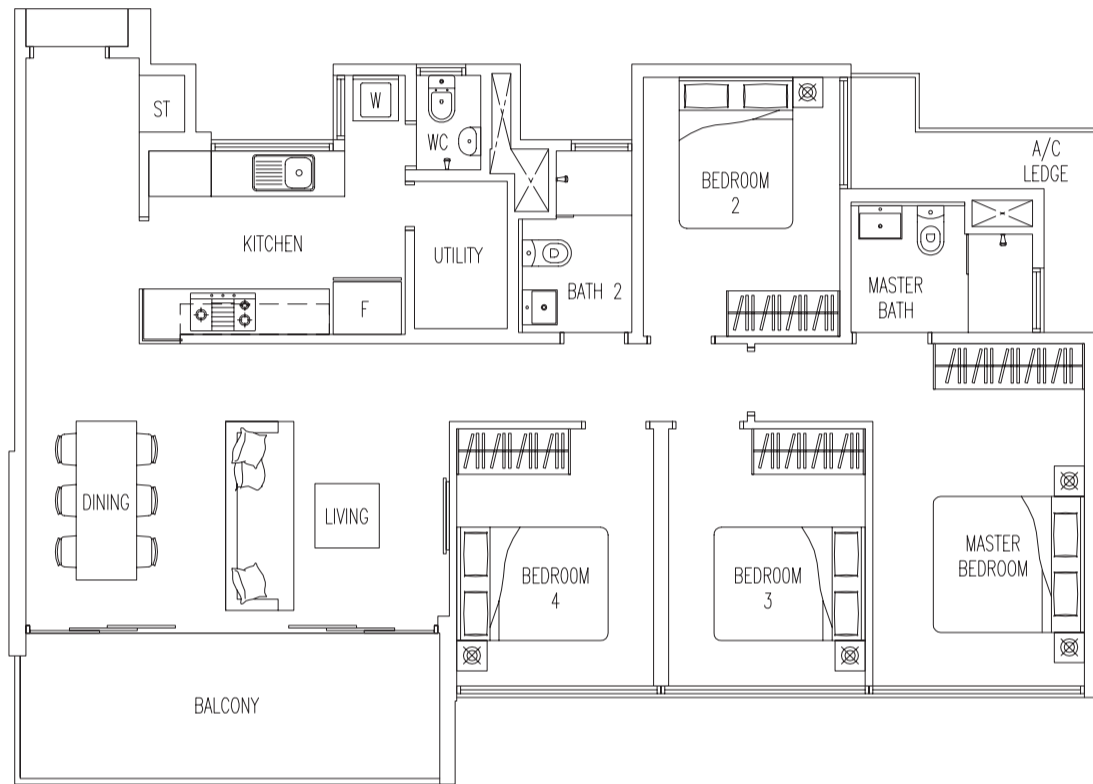
Area includes A/C ledge, balcony, PES, roof terrace. Some units are mirror images of the apartment plans shown in the brochure. Please refer to the key plans for orientation. The plans are subject to change as may be approved by the relevant authorities. All floor areas are approximate measurements only and are subject to government resurvey. Abbreviation : A/C ledge (Aircon Ledge), PES (Private Enclosed Space), and ST (Store).



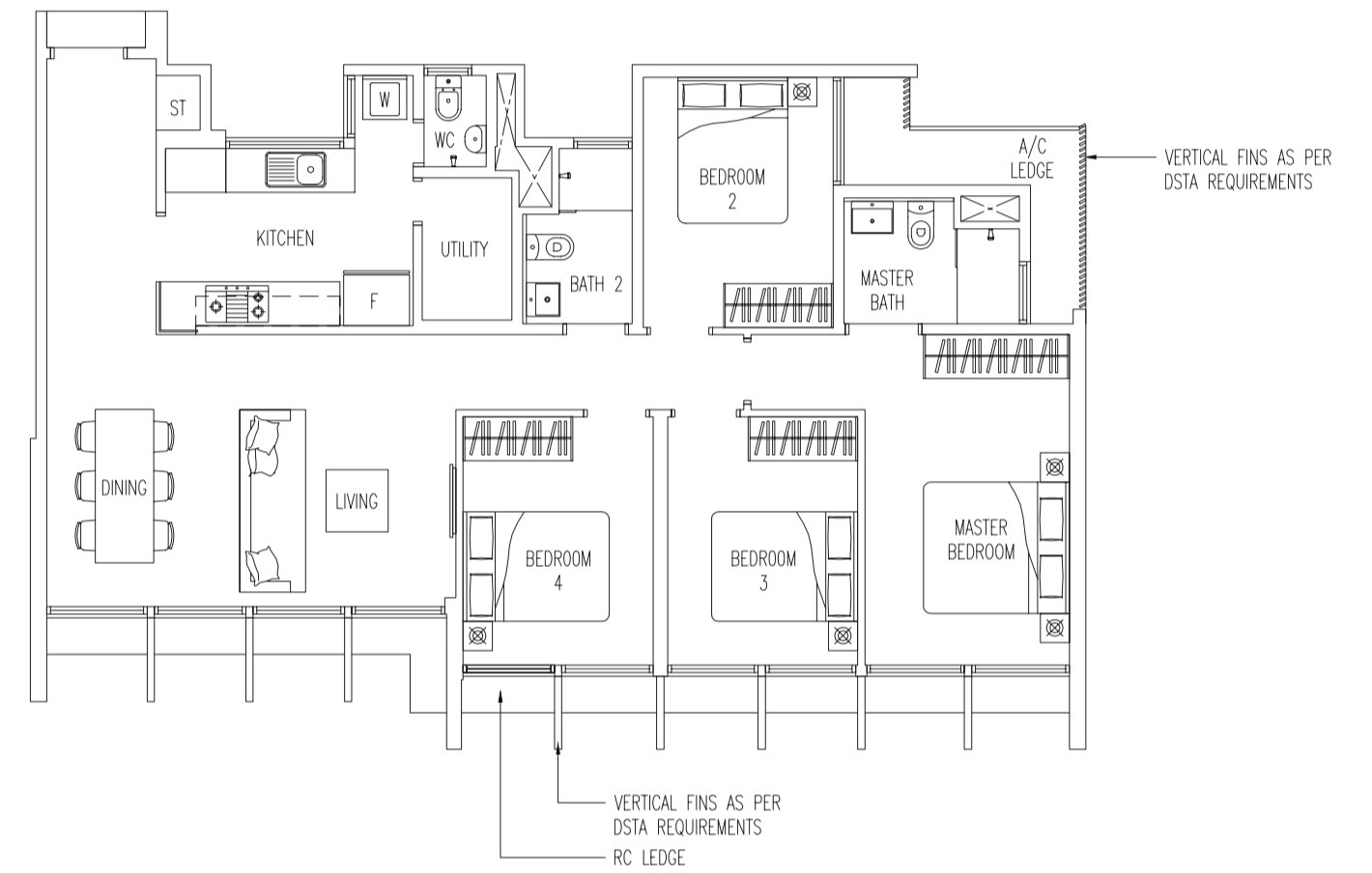
VISTAhome
4-Bedroom

VISTAhome
4-Bedroom

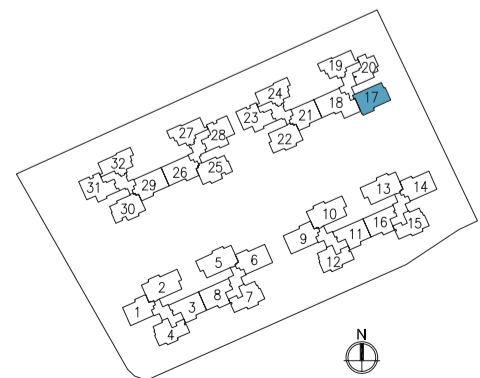
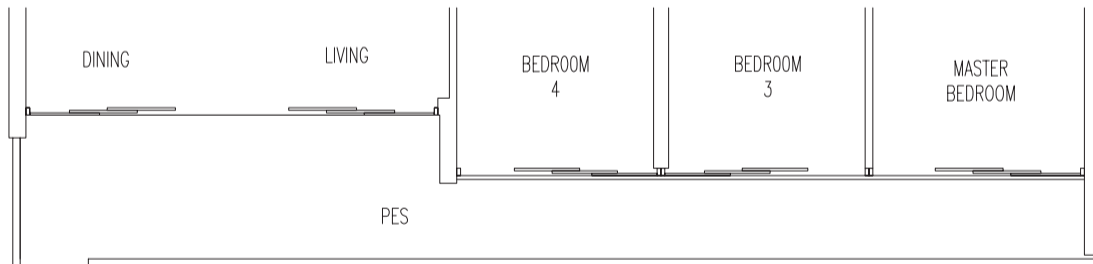
Type C-VT
118 sq m / 1270 sq ft
#03-17 To #13-17



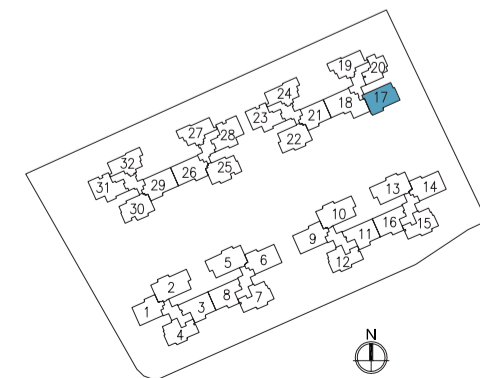
Type C(a)-VT
107 sq m / 1152 sq ft
#14-17



Type C(P)-VT
128 sq m / 1378 sq ft
#02-17



Area includes A/C ledge, balcony, PES, roof terrace. Some units are mirror images of the apartment plans shown in the brochure. Please refer to the key plans for orientation. The plans are subject to change as may be approved by the relevant authorities. All floor areas are approximate measurements only and are subject to government resurvey. Abbreviation : A/c ledge (Aircon Ledge), PES (Private Enclosed Space), and ST (Store).



Area includes A/C ledge, balcony, PES, roof terrace. Some units are mirror images of the apartment plans shown in the brochure. Please refer to the key plans for orientation. The plans are subject to change as may be approved by the relevant authorities. All floor areas are approximate measurements only and are subject to government resurvey. Abbreviation : A/c ledge (Aircon Ledge), PES (Private Enclosed Space), and ST (Store).

VISTAhome

4-Bedroom

Type C1(P)-VT

116 sq m / 1249 sq ft

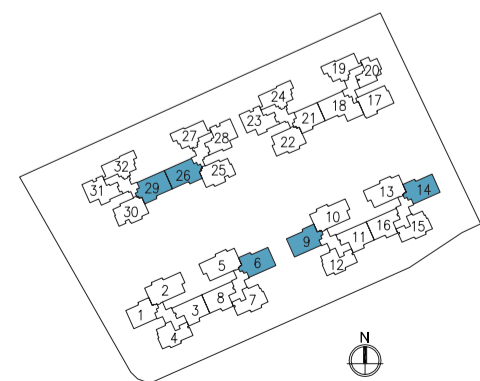
- #02-29 (mirror)
- #02-26 (rotated)
- #02-06
- #02-09 (mirror)
- #02-14



Type C1-VT

112 sq m / 1206 sq ft

- #03-29 To #13-29 (mirror)
- #03-26 To #13-26 (rotated)
- #03-06 To #13-06
- #03-09 To #13-09 (mirror)
- #03-14 To #13-14
- #14-26 - Open Balcony (rotated)



0 1 3 5M

Area includes A/C ledge, balcony, PES, roof terrace. Some units are mirror images of the apartment plans shown in the brochure. Please refer to the key plans for orientation. The plans are subject to change as may be approved by the relevant authorities. All floor areas are approximate measurements only and are subject to government resurvey. Abbreviation : A/c ledge (Aircon Ledge), PES (Private Enclosed Space), and ST (Store).

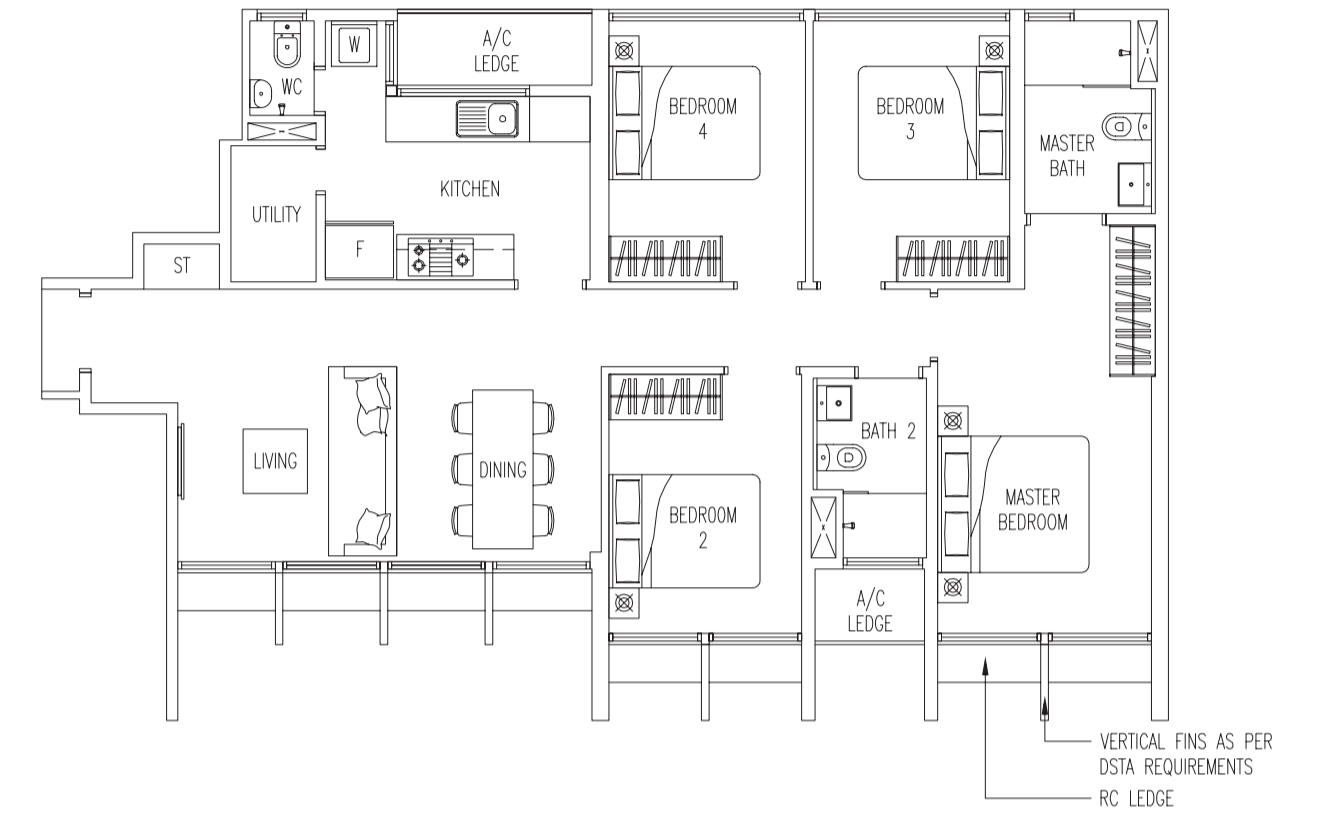
VISTAhome

4-Bedroom

Type C1(a)-VT

103 sq m / 1109 sq ft

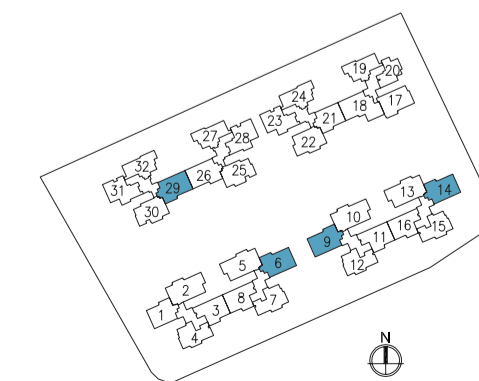
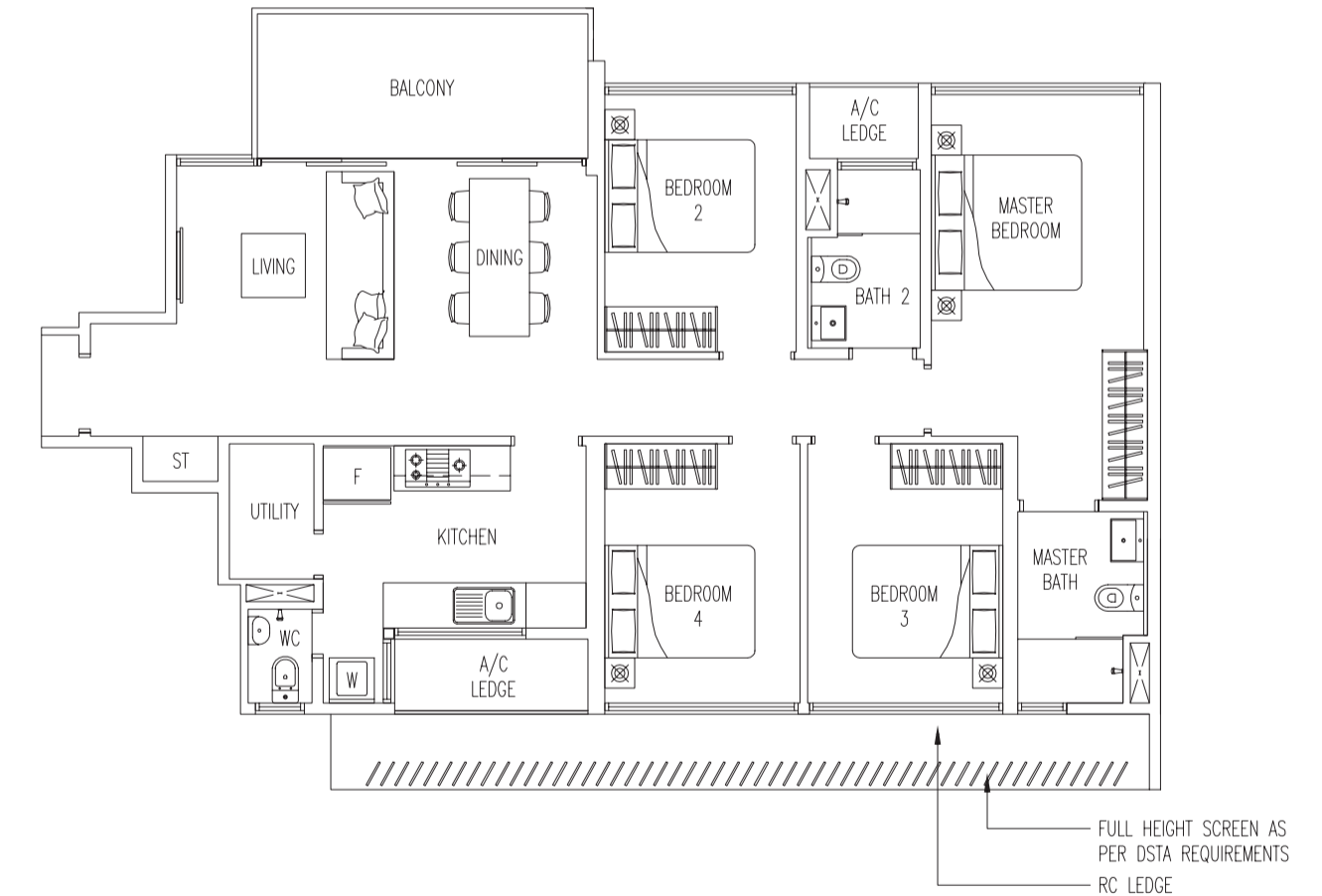
#14-29



Type C1(b)-VT

112 sq m / 1206 sq ft

- #14-06 - Open Balcony
- #14-09 - Open Balcony (mirror)
- #14-14 - Open Balcony



0 1 3 5M

Area includes A/C ledge, balcony, PES, roof terrace. Some units are mirror images of the apartment plans shown in the brochure. Please refer to the key plans for orientation. The plans are subject to change as may be approved by the relevant authorities. All floor areas are approximate measurements only and are subject to government resurvey. Abbreviation : A/c ledge (Aircon Ledge), PES (Private Enclosed Space), and ST (Store).

VANTAGEhome

3-Bedroom



Type B4-VG

107 sq m / 1152 sq ft

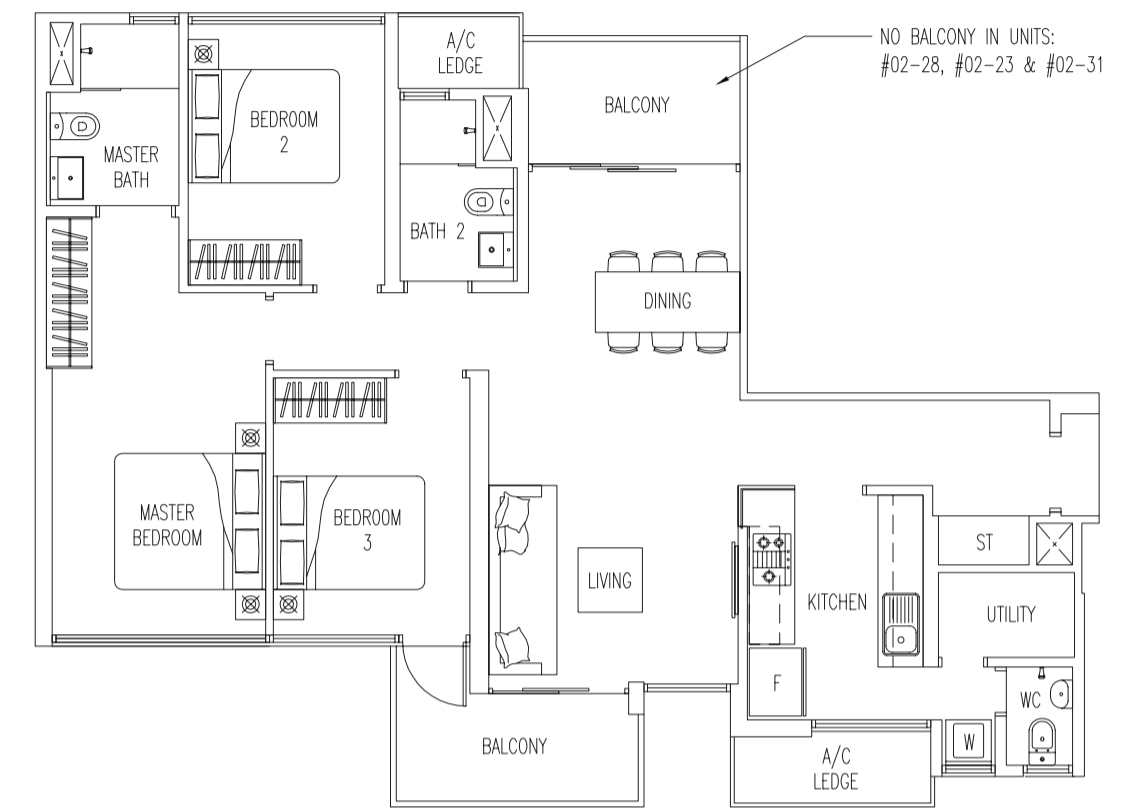
#03-28 To #13-28 (mirror)

#03-23 To #13-23

#03-31 To #13-31

#14-28 - Open Balcony (mirror)

#14-23 - Open Balcony



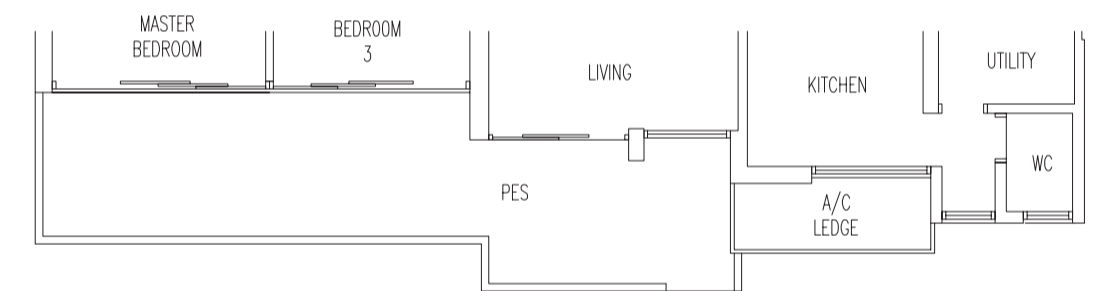
Type B4(P)-VG

115 sq m / 1238 sq ft

#02-28 (mirror)

#02-23

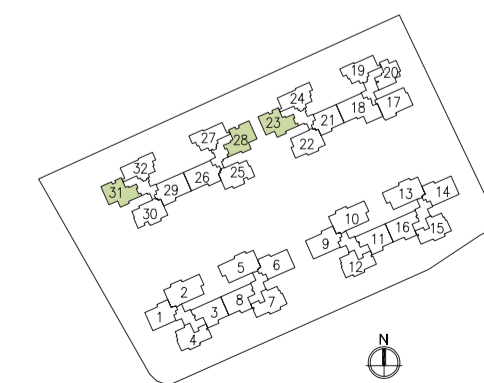
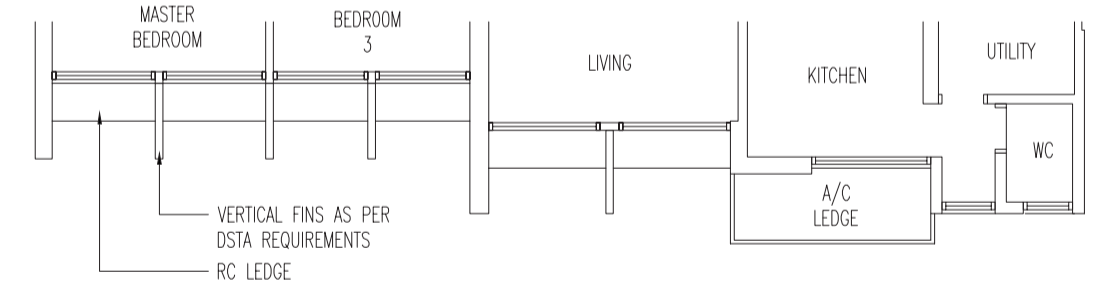
#02-31



Type B4(a)-VG

102 sq m / 1098 sq ft

#14-31



Area includes A/C ledge, balcony, PES, roof terrace. Some units are mirror images of the apartment plans shown in the brochure. Please refer to the key plans for orientation. The plans are subject to change as may be approved by the relevant authorities. All floor areas are approximate measurements only and are subject to government resurvey. Abbreviation : A/C ledge (Aircon Ledge), PES (Private Enclosed Space), and ST (Store).



Type B-TR

111 sq m / 1195 sq ft

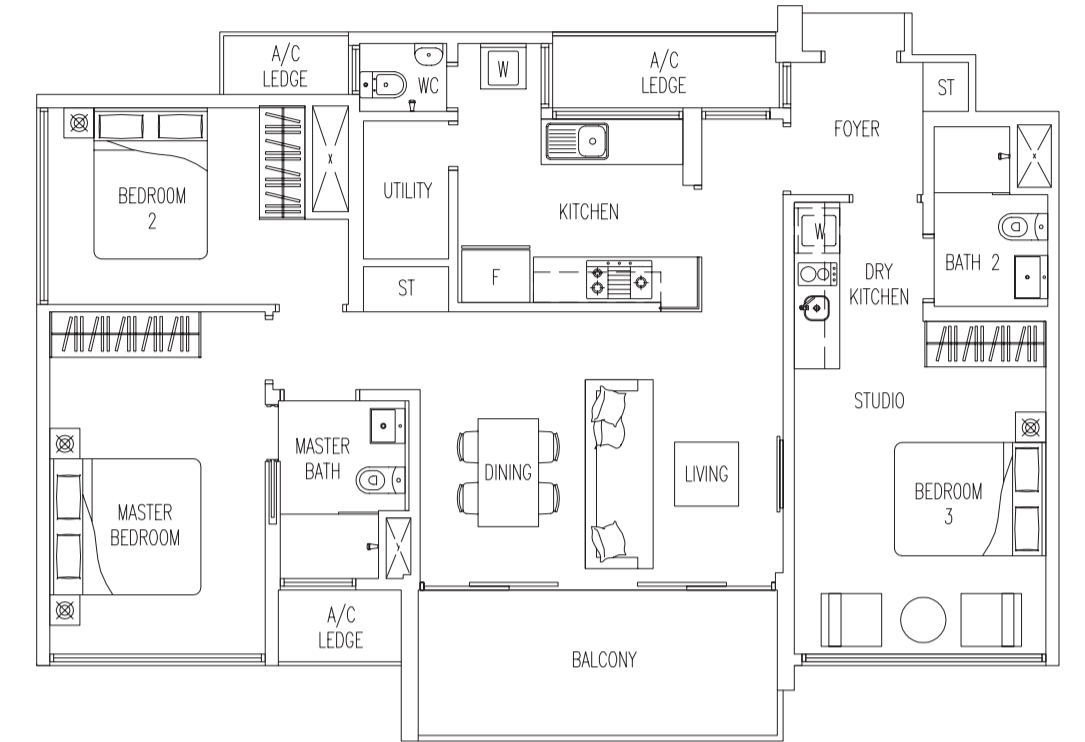
#03-30 To #13-30

#03-25 To #13-25 (mirror)

#03-22 To #13-22

#14-22 - Open Balcony

#14-25 - Open Balcony (mirror)

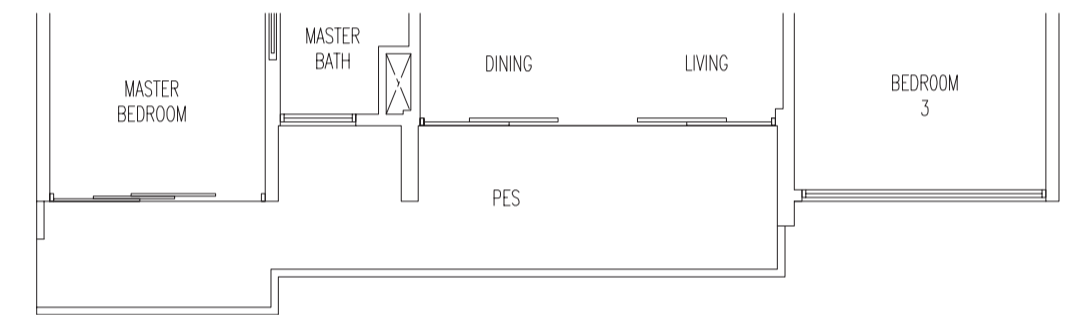


Type B(P)-TR

118 sq m / 1270 sq ft

#02-25 (mirror)

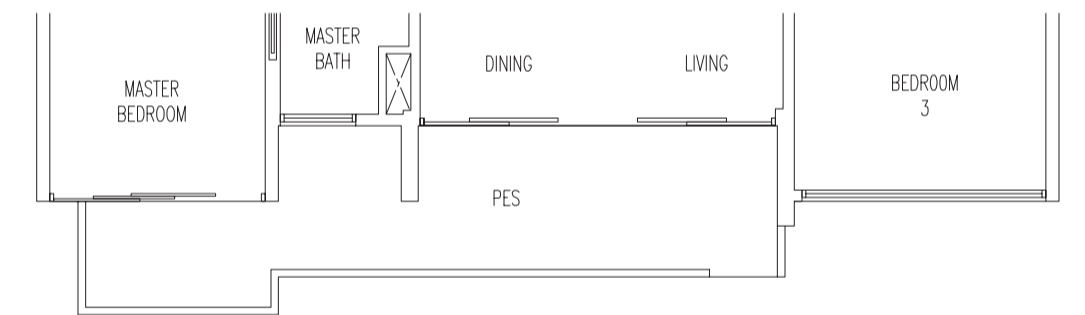
#02-22



Type B(P1)-TR

117 sq m / 1259 sq ft

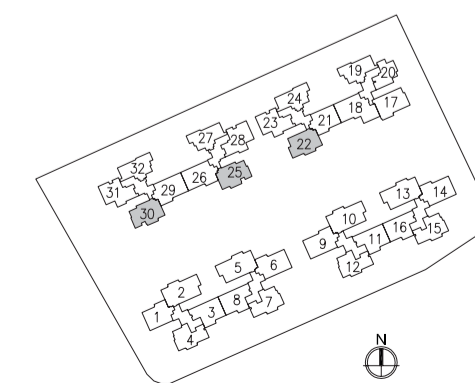
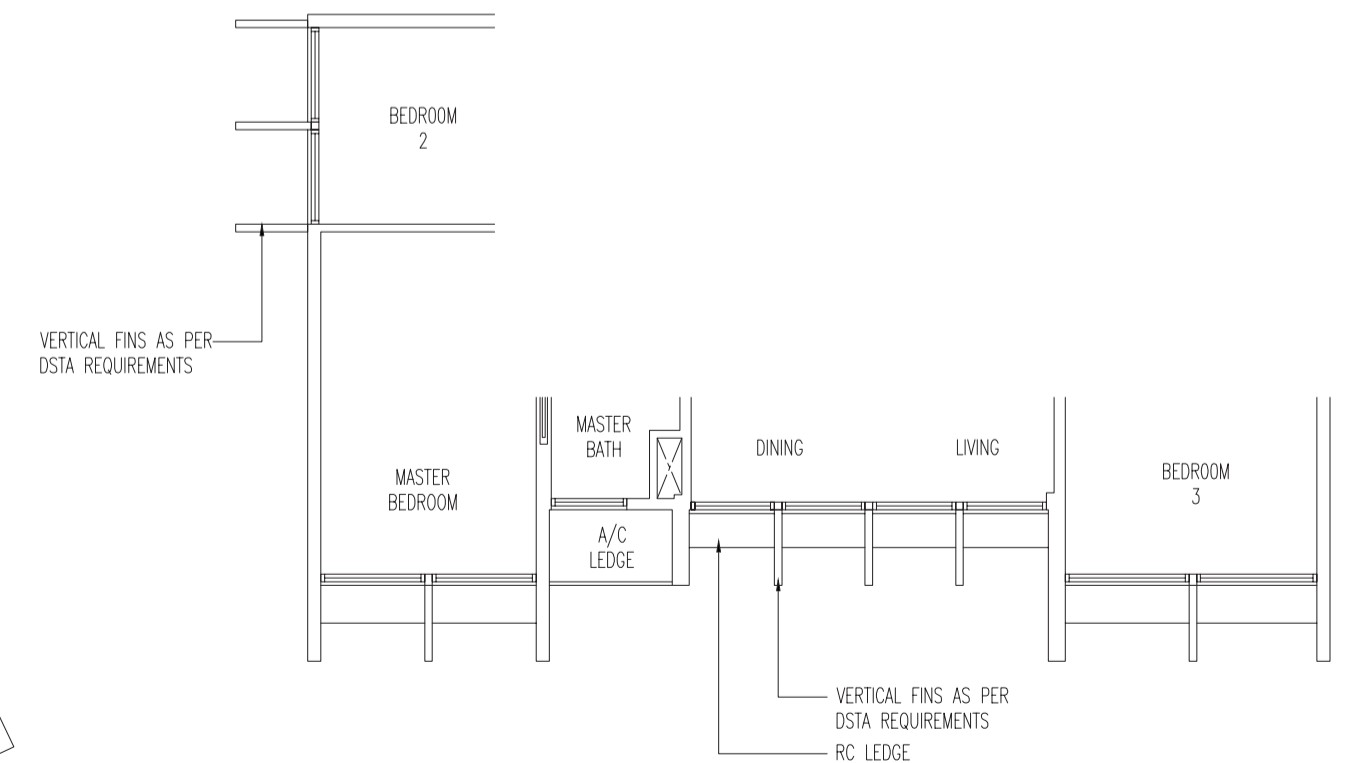
#02-30



Type B(a)-TR

102 sq m / 1098 sq ft

#14-30



0 1 3 5M

Area includes A/C ledge, balcony, PES, roof terrace. Some units are mirror images of the apartment plans shown in the brochure. Please refer to the key plans for orientation. The plans are subject to change as may be approved by the relevant authorities. All floor areas are approximate measurements only and are subject to government resurvey. Abbreviation : A/C ledge (Aircon Ledge), PES (Private Enclosed Space), and ST (Store).

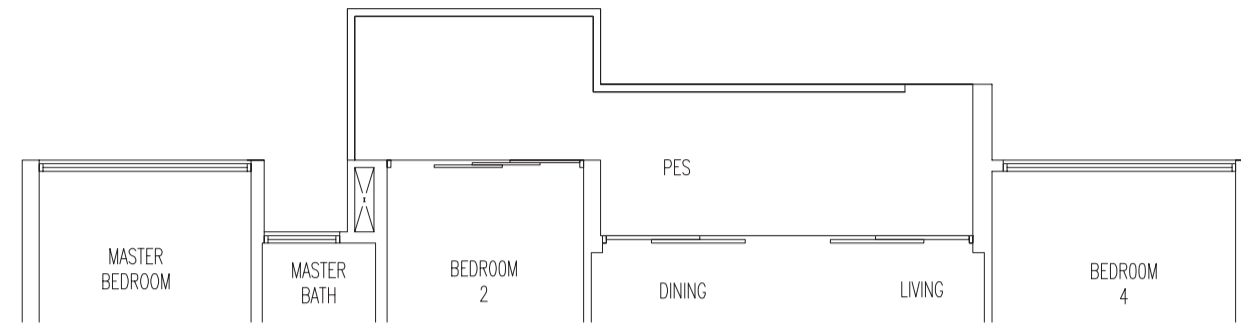
Type C(P)-TR

137 sq m / 1475 sq ft

#02-05

#02-10 (mirror)

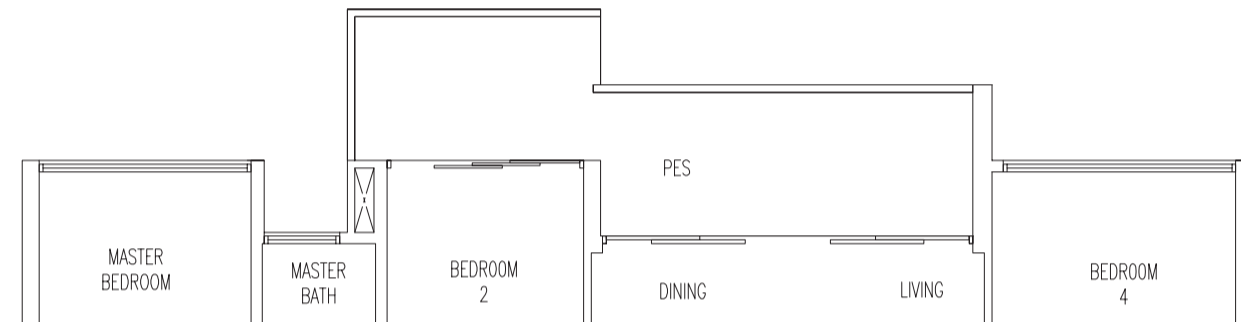
#02-13



Type C(P1)-TR

137 sq m / 1475 sq ft

#02-02 (mirror)



Type C-TR

130 sq m / 1399 sq ft

#03-02 To #13-02 (mirror)

#03-05 To #13-05

#03-10 To #13-10 (mirror)

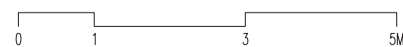
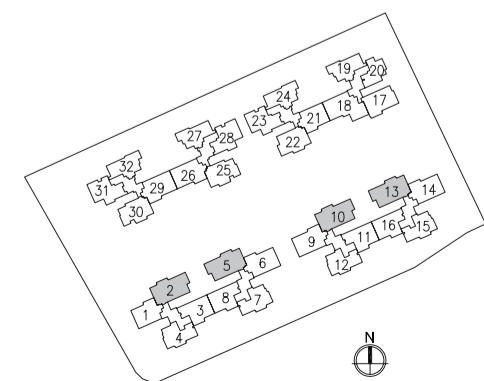
#03-13 To #13-13

#14-02 - Open Balcony (mirror)

#14-05 - Open Balcony

#14-10 - Open Balcony (mirror)

#14-13 - Open Balcony

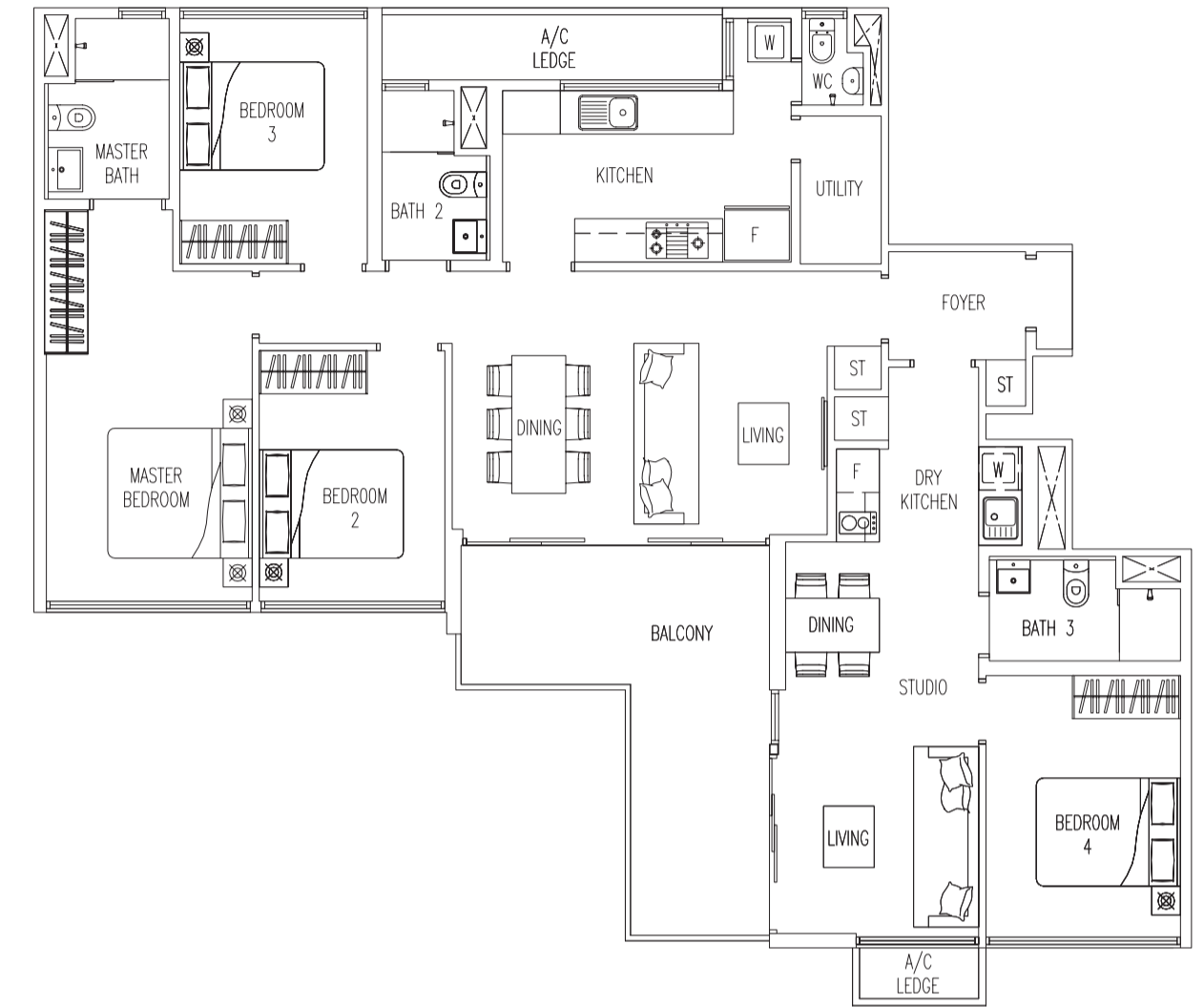


Area includes A/C ledge, balcony, PES, roof terrace. Some units are mirror images of the apartment plans shown in the brochure. Please refer to the key plans for orientation. The plans are subject to change as may be approved by the relevant authorities. All floor areas are approximate measurements only and are subject to government resurvey. Abbreviation : A/C ledge (Aircon Ledge), PES (Private Enclosed Space), and ST (Store).

Type C-TRD

148 sq m / 1593 sq ft

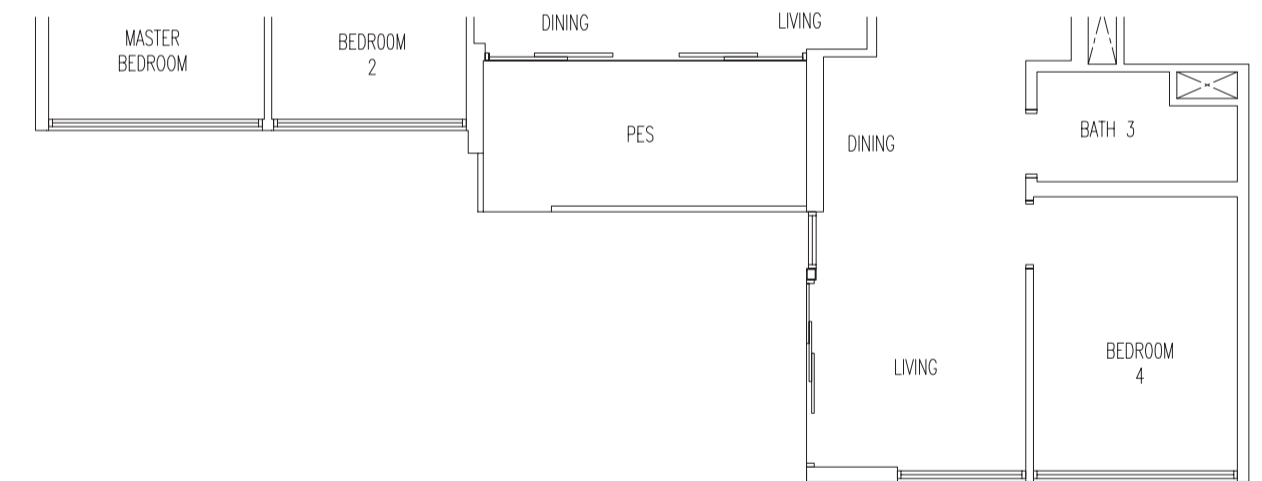
#03-18 To #13-18



Type C(P)-TRD

139 sq m / 1496 sq ft

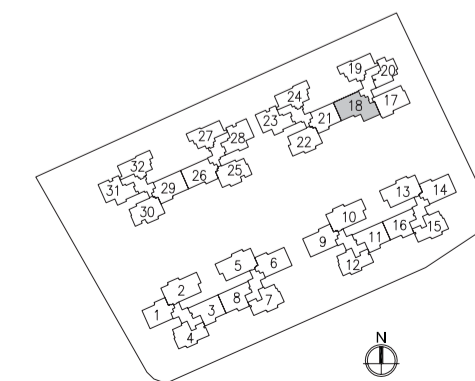
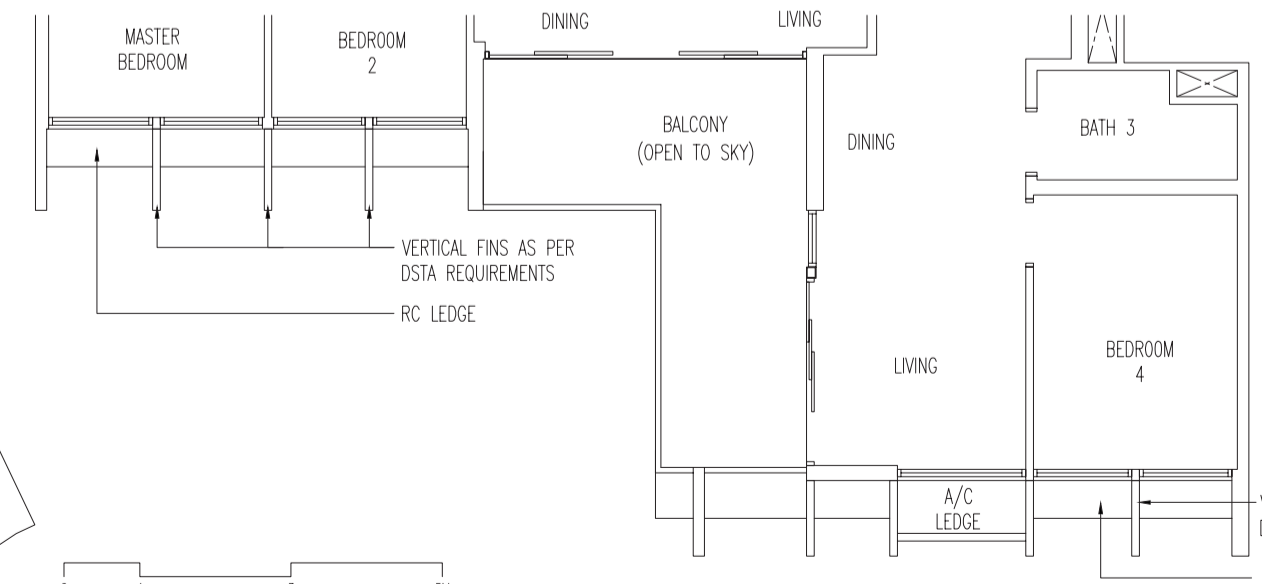
#02-18



Type C(a)-TRD

148 sq m / 1593 sq ft

#14-18 - Open Balcony

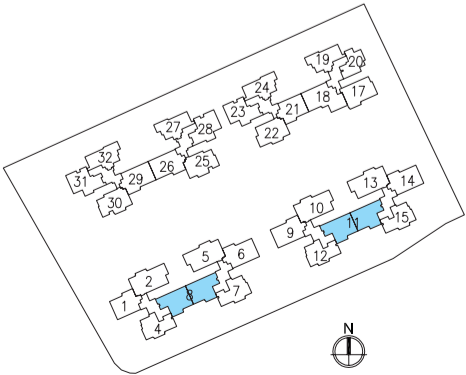
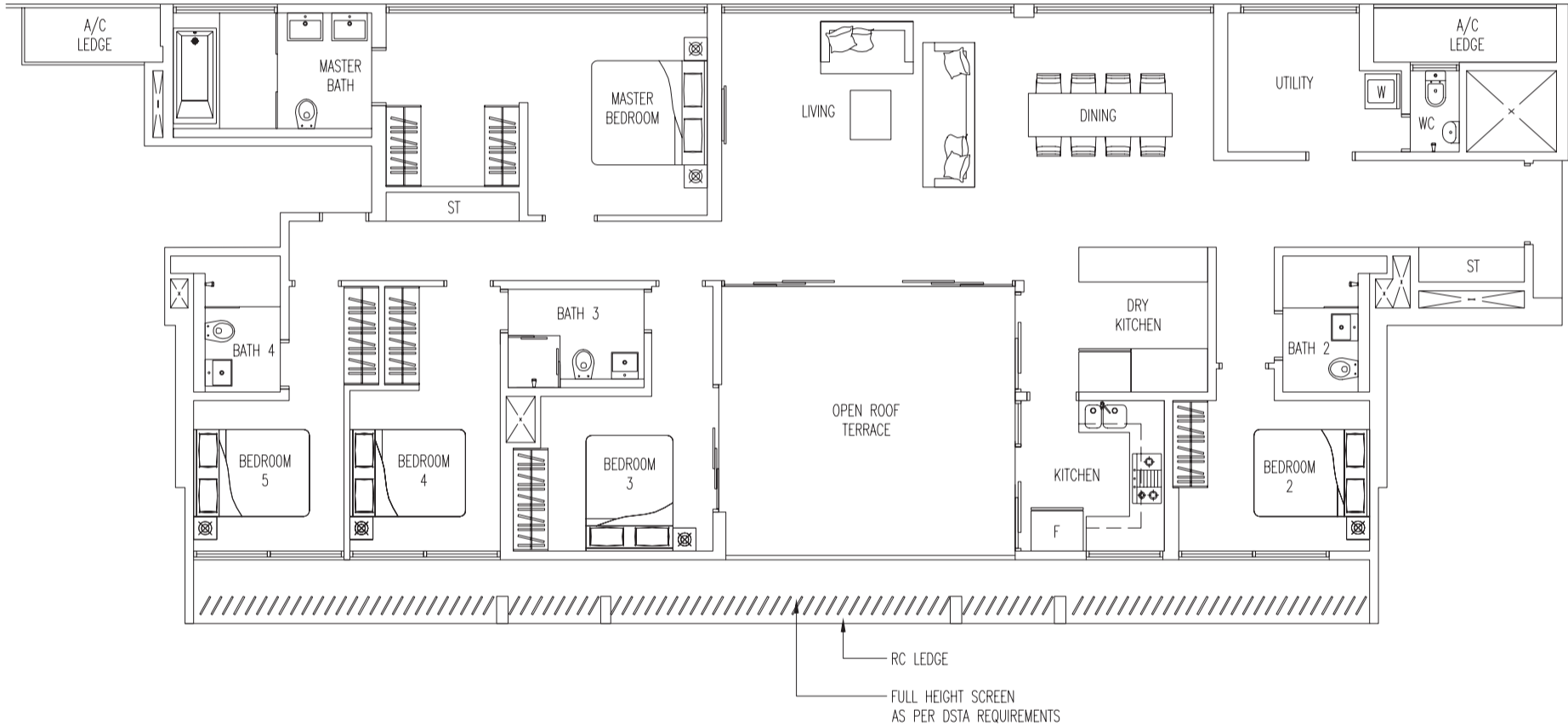


Area includes A/C ledge, balcony, PES, roof terrace. Some units are mirror images of the apartment plans shown in the brochure. Please refer to the key plans for orientation. The plans are subject to change as may be approved by the relevant authorities. All floor areas are approximate measurements only and are subject to government resurvey. Abbreviation : A/C ledge (Aircon Ledge), PES (Private Enclosed Space), and ST (Store).

PENTHOUSE

PENTHOUSE

Type PH
 205 sq m / 2207 sq ft
 #14-08
 #14-11 (mirror)



Area includes A/C ledge, balcony, PES, roof terrace. Some units are mirror images of the apartment plans shown in the brochure. Please refer to the key plans for orientation. The plans are subject to change as may be approved by the relevant authorities. All floor areas are approximate measurements only and are subject to government resurvey. Abbreviation : A/C ledge (Aircon Ledge), PES (Private Enclosed Space), and ST (Store).