



**ROBINSON  
SQUARE**

# FREEHOLD



artist's impression only



**Soar to the next  
level with  
Robinson Square.**

There is nothing more invigorating than reveling in the pulse of the city. Located at 144 Robinson Road, Robinson Square – a simply stunning freehold development with a stylish facade featuring sleek louvers and distinctive lighting at dusk. Robinson Square houses 32 office units, five shops and a fitness centre.



ROBINSON  
SQUARE

Esthetic  
CLINIC

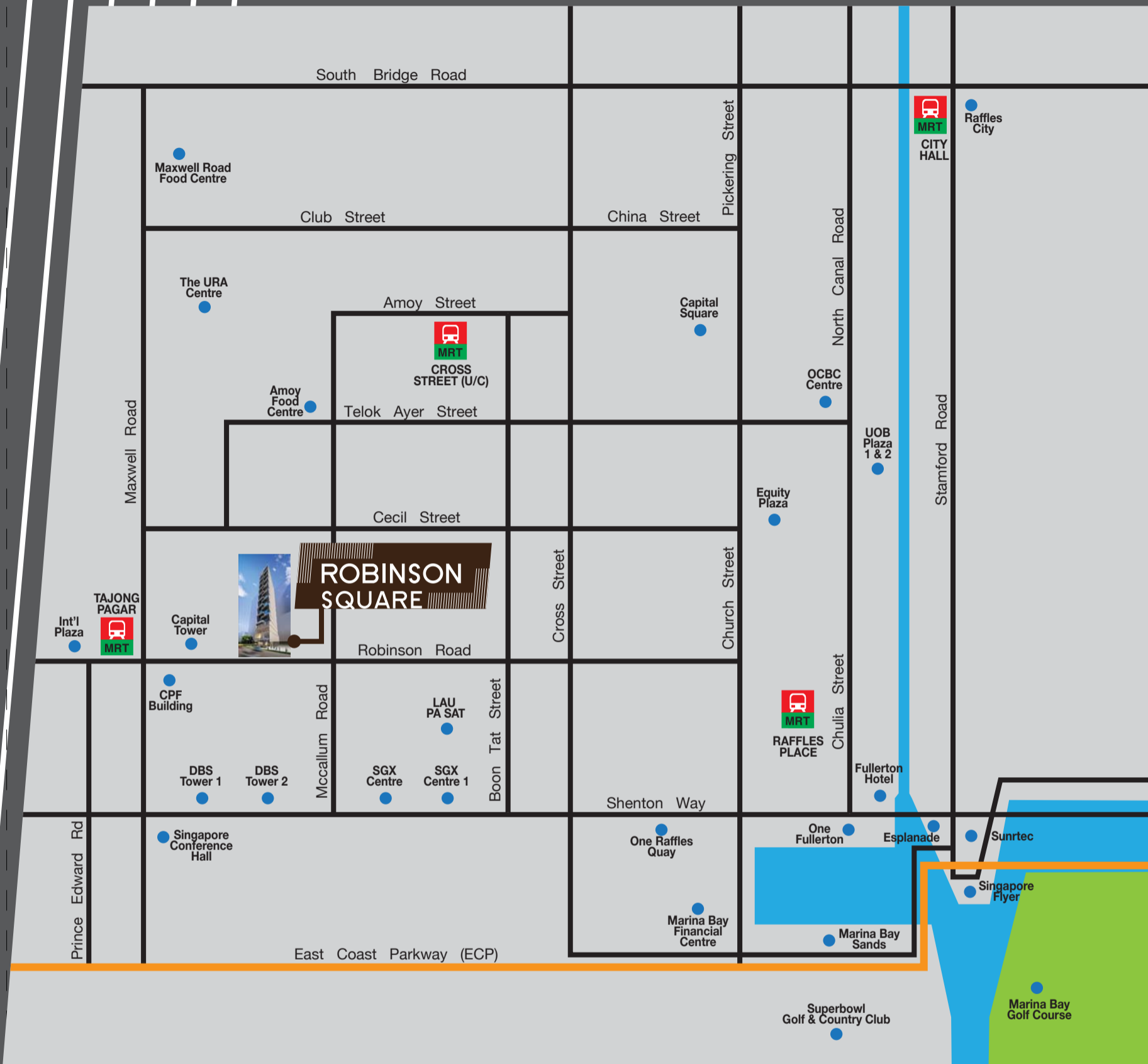
BOOKS

COURT EXPRESS

artist's impression only



# LOCATION MAP



## It's all about location.

Robinson Square sits right in the heart of Singapore's Central Business District, along bustling Robinson Road. With busy Tanjong Pagar MRT station just a stone throw away and countless office buildings in the vicinity, Robinson Square offers the traffic and the opportunity for your business to expand beyond expectations.



## Shop to your delight.

Robinson Square offers space for shop fronts that will easily reach out to their customers. Contemporary design features add a sense of the future to this development's facade. Robinson Square's unique facade is an attraction in itself that will pull in the crowd.

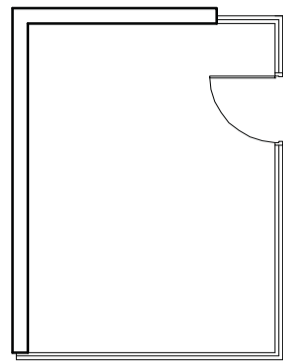




artist's impression only

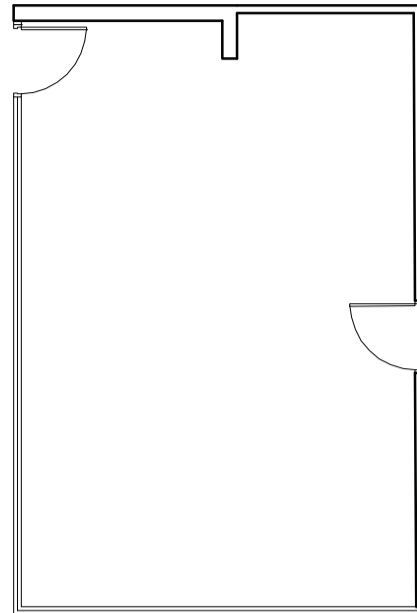






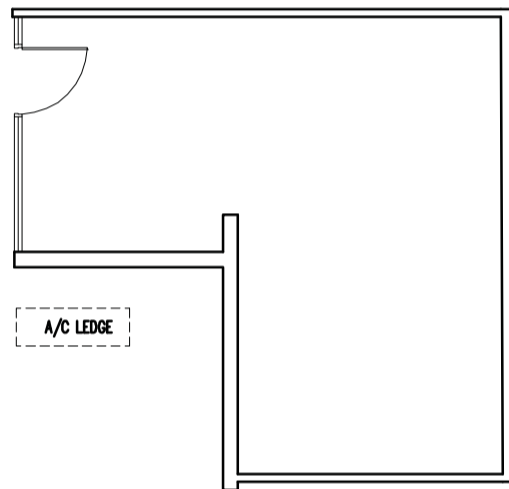
**SHOP 1**  
#01-01  
17 sq m

A/C LEDGE



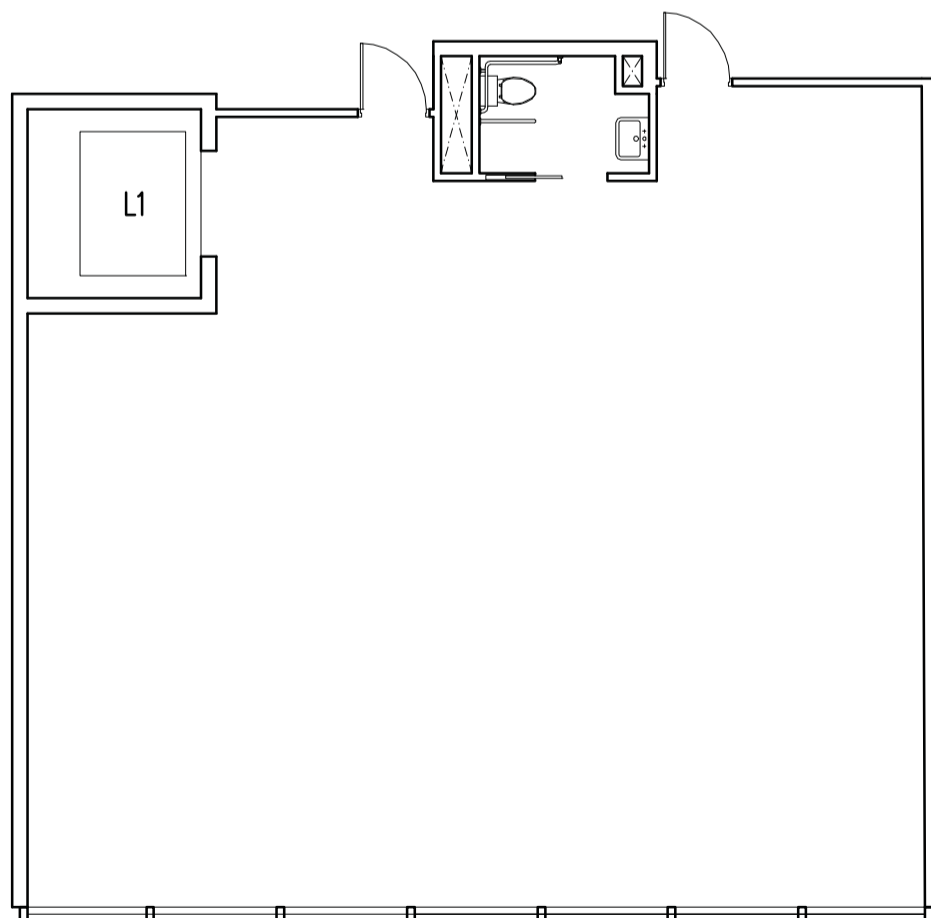
**SHOP 2**  
#01-02  
45 sq m

A/C LEDGE



**SHOP 3**  
#01-03  
34 sq m

A/C LEDGE

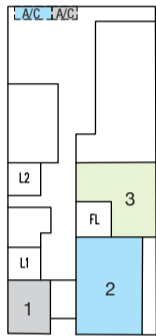


**SHOP 4**  
#02-01

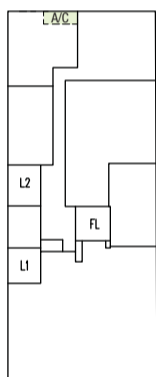
**SHOP 5**  
#03-01

127 sq m

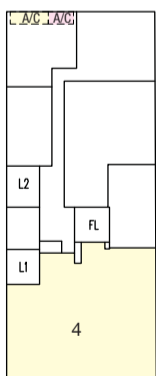
A/C LEDGE



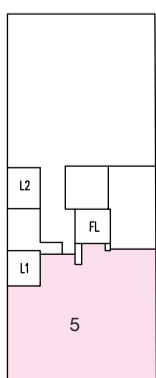
1st Storey



2nd Storey



2nd Storey



3rd Storey



**Unit area includes A/C ledge.**

Plan for information only and may change at the sole discretion of the Architect.



artist's impression only

## Inspire your business to new heights.

A contemporary approach to create quality office spaces each having direct lift access.

The quiet elegance of the design and stylish palettes of materials, together with clever illumination form a complete virtually self-contained office and commercial environment. When night falls, the building transform yet again with the interplay of lights and louvers.





artist's impression only



artist's impression only

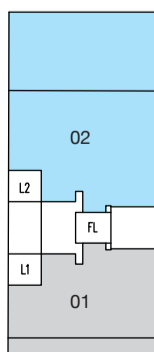
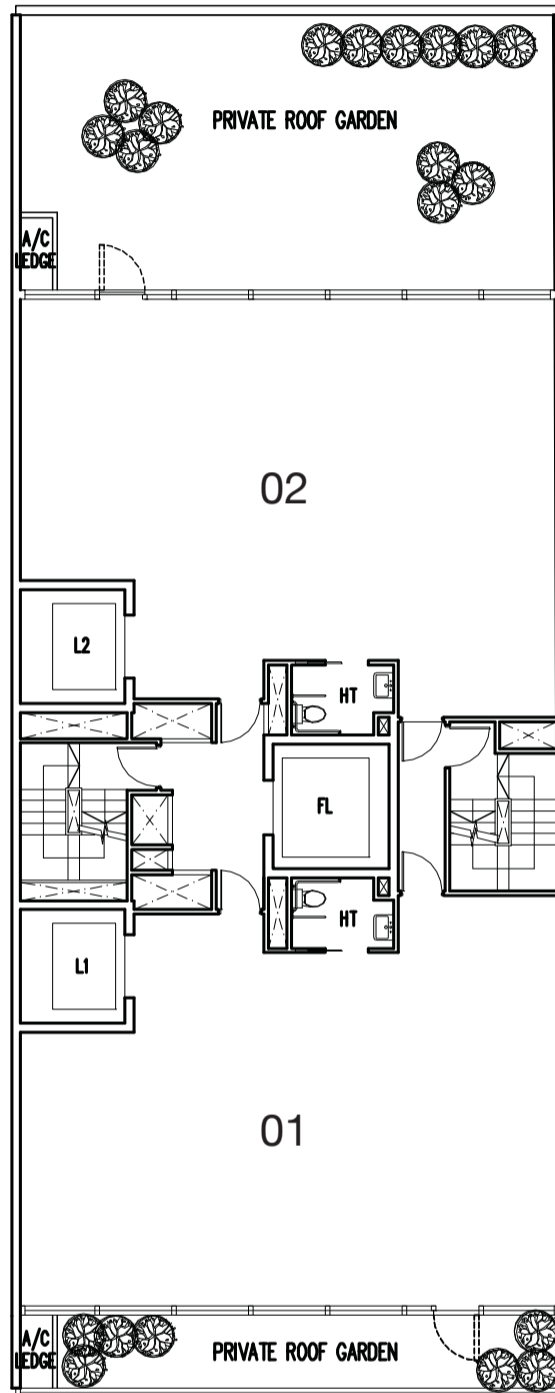


## Give your business the room to grow

Robinson Square offers conducive office space that will allow your business to reach its full potential and beyond.

#04-01  
125 sq m

#04-02  
180 sq m



**Unit area includes A/C ledge and Roof Garden.**

Plan for information only and may change at the sole discretion of the Architect.

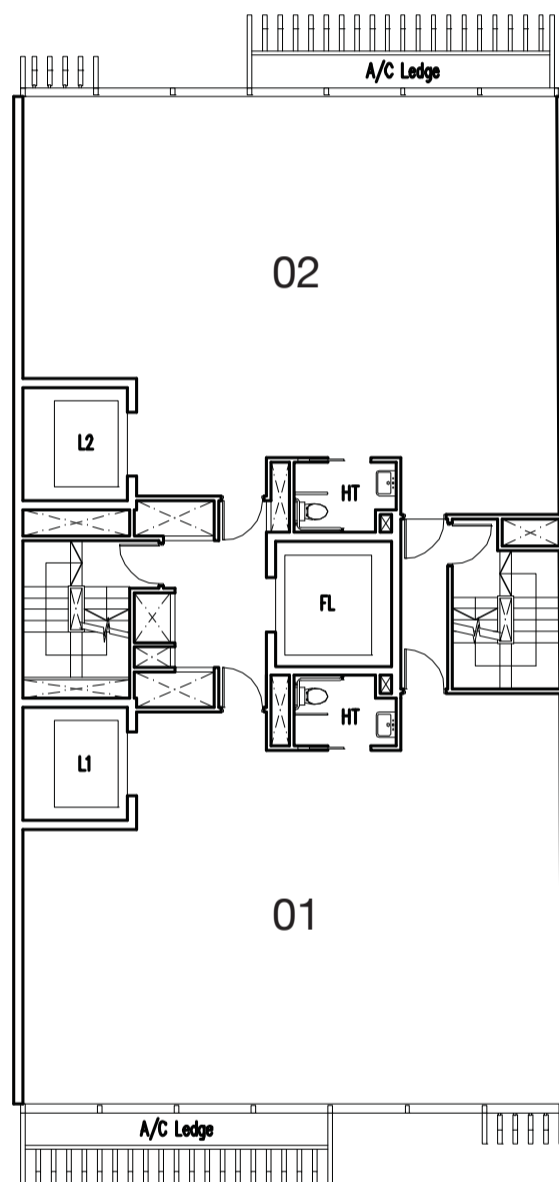
# OFFICES

- #05-01
- #07-01
- #09-01
- #11-01
- #13-01
- #15-01
- #17-01
- #19-01

109 sq m

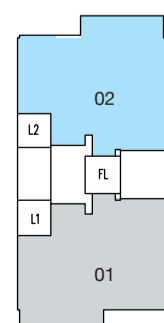
- #05-02
- #07-02
- #09-02
- #11-02
- #13-02
- #15-02
- #17-02
- #19-02

110 sq m



Unit area includes A/C ledge.

Plan for information only and may change at the sole discretion of the Architect.

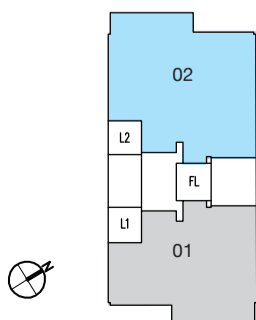
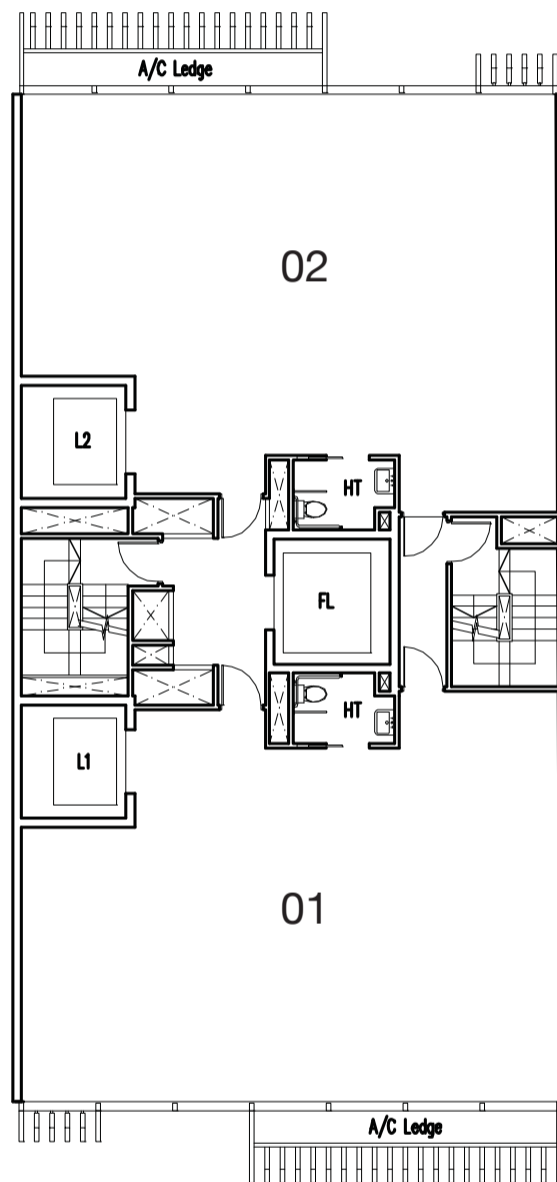


#06-01  
 #08-01  
 #10-01  
 #12-01  
 #14-01  
 #16-01  
 #18-01

109 sq m

#06-02  
 #08-02  
 #10-02  
 #12-02  
 #14-02  
 #16-02  
 #18-02

110 sq m

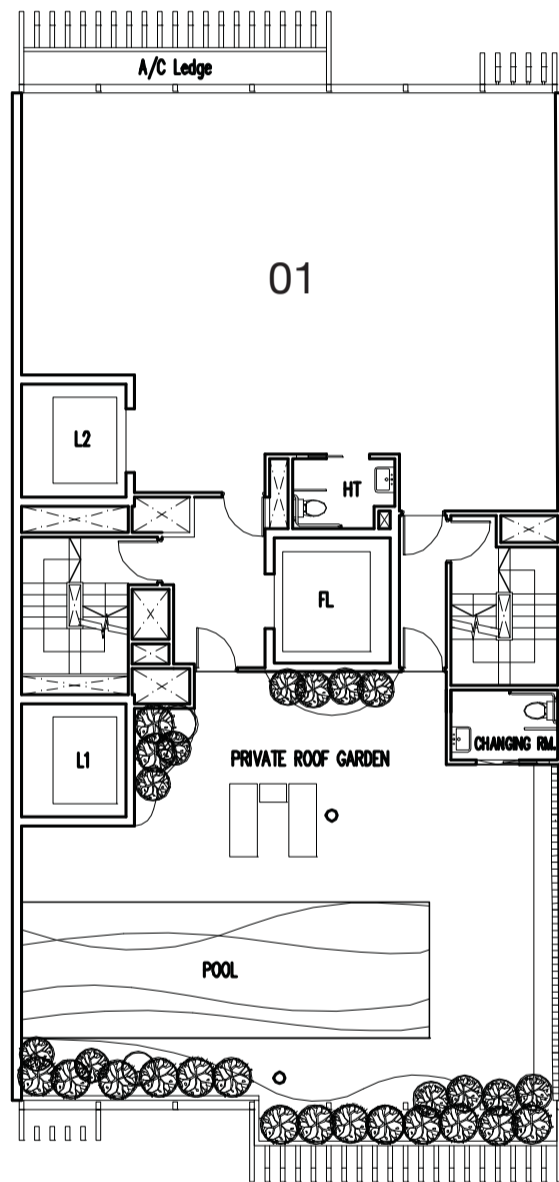


**Unit area includes A/C ledge.**

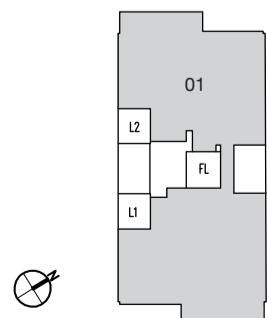
Plan for information only and may change at the sole discretion of the Architect.

# FITNESS CENTRE / SPA / OFFICE

#20-01  
224 sq m



Unit area includes A/C ledge, Roof Garden and Pool.  
Plan for information only and may change at the sole discretion of the Architect.







artist's impression only

**Go on. Rejuvenate after  
a hard day at the office.**

Take a refreshing dip in the rooftop pool after a work out at the fitness centre. Refreshing and rejuvenate with a complete peace of mind.

# S P E C I F I C A T I O N S

## 1. Foundation

Piling system to Structural Engineer's detail and/or design.

## 2. Superstructure

Reinforced concrete columns.

Reinforced/ Post tensioned concrete to all beams and floor slabs.

## 3. Roof

Reinforced/ Post tensioned concrete flat roof with waterproofing.

## 4. Floor Loading

1 <sup>st</sup> Storey	4 KN/m <sup>2</sup>
2 <sup>nd</sup> Storey	4 KN/m <sup>2</sup>
3 <sup>rd</sup> Storey	4 KN/m <sup>2</sup>
4 <sup>th</sup> to 19 <sup>th</sup> Storey	3.5 KN/m <sup>2</sup>
20 <sup>th</sup> Storey	5 KN/m <sup>2</sup>

## 5. Floor to Floor Height

1 <sup>st</sup> Storey	6.0 metres approximately
2 <sup>nd</sup> Storey	5.0 metres approximately
3 <sup>rd</sup> Storey	5.5 metres approximately
4 <sup>th</sup> to 18 <sup>th</sup> Storey	4.9 metres approximately
19 <sup>th</sup> Storey (#19-01)	3.6 metres approximately
19 <sup>th</sup> Storey (#19-02)	5.1 metres approximately
20 <sup>th</sup> Storey	4.9 metres approximately

## 6. External Walls

RC wall and/or clay brick wall and/or hollow block wall with skim coat and/or plaster with weathershield emulsion paint finish, where applicable.

## 7. Internal Walls

RC wall and/or clay brick wall and/or hollow block wall and/or precast panel wall with skim coat and/or plaster with emulsion paint finish, where applicable.

Homogenous tiles and/or granite tiles and/or plaster with emulsion paint finish, where applicable.

Homogenous and/or ceramic tiles finishes to toilet wall, where applicable.

## 8. Ceiling

Generally concrete ceiling soffit with skim coat and acrylic emulsion paint except lift lobbies, corridors, toilets with calcium silicate board, and/or mineral wool acoustic tile, and/or fibrous plaster board suspended ceiling, where applicable.

## 9. Flooring

Generally power floated concrete floor and/or cement and sand screed to all areas except lift lobbies in homogenous and/or granite tile finishes and toilet areas in ceramic and/or homogenous tiles, where applicable.

## 10. Doors

Glass and/or metal and/or timber doors and PSB's approved fire-rated doors where applicable.

## 11. Locks

Good quality locksets and ironmongery.

## 12. Curtain Wall

Power-coated aluminium specialist curtain wall system.

## 13. Electrical Installation

40Amp 3 phase (For all units except #20-01)

63Amp 3 phase (For #20-01 only)

Exit and Emergency lights in each unit

## 14. Plumbing and Sanitary

Good quality sanitary wares and fittings in compliance with statutory requirements.

Provision of water tap-off and floor trap to all shops.

## 15. Air-Conditioning and Mechanical Ventilation

Provision of air-conditioning to 1<sup>st</sup> Storey Lift Lobby only.

Mechanical ventilation to serve Fire Lift Lobby of the upper storeys and toilets in compliance with authority requirements.

## 16. Lift

2 nos. Passenger Lifts

1 no. Fire Lift

## 17. Fire Protection System

Sprinkler and Fire Alarm System in compliance with statutory requirements

Wet Risers and Hose-reel System in common areas

## 18. Lightning Protection

Lightning protection is provided to comply with latest code of practices.

## 19. Telecommunication Services

Box terminal for telephone line is provided to each unit.

Note:

**Tiles:** Selected tiles sizes and tile surface flatness cannot be perfect, and subject to acceptable range described in Singapore Standards SS483:2000.

**Ventilation:** Natural and/or mechanical ventilation as required by the Building and construction Authority (BCA) and/or National Environment Authority (NEA).

NAME OF PROJECT	<b>Robinson Square</b>
ADDRESS OF PROJECT	<b>144 Robinson Road, Singapore 068908</b>
DEVELOPER	<b>Oxley Blossom Pte Ltd (ROC: 201015342Z)</b>
TENURE OF LAND	<b>Estate in Perpetuity</b>
LEGAL DESCRIPTION	<b>LOT 99756L &amp; 99757C TS 02</b>
BUILDING PLAN NO.	<b>A642-00001-2011-BP01 dated 31 Oct 2011</b>
ESTIMATED DATE OF VACANT POSSESSION	<b>31 Dec 2016</b>
ESTIMATED DATE OF LEGAL COMPLETION	<b>31 Dec 2019</b>

A prestigious  
development by:



The information contained herein is subject to change as may be approved by the relevant authorities and do not form part of an offer or contract. All art renderings and pictures herein are artist's impression only and all areas stated herein are subject to re-survey. While every reasonable care has been taken in providing the information and specifications herein, neither the developer nor their appointed Marketing Agents can be held responsible for any inaccuracies.



