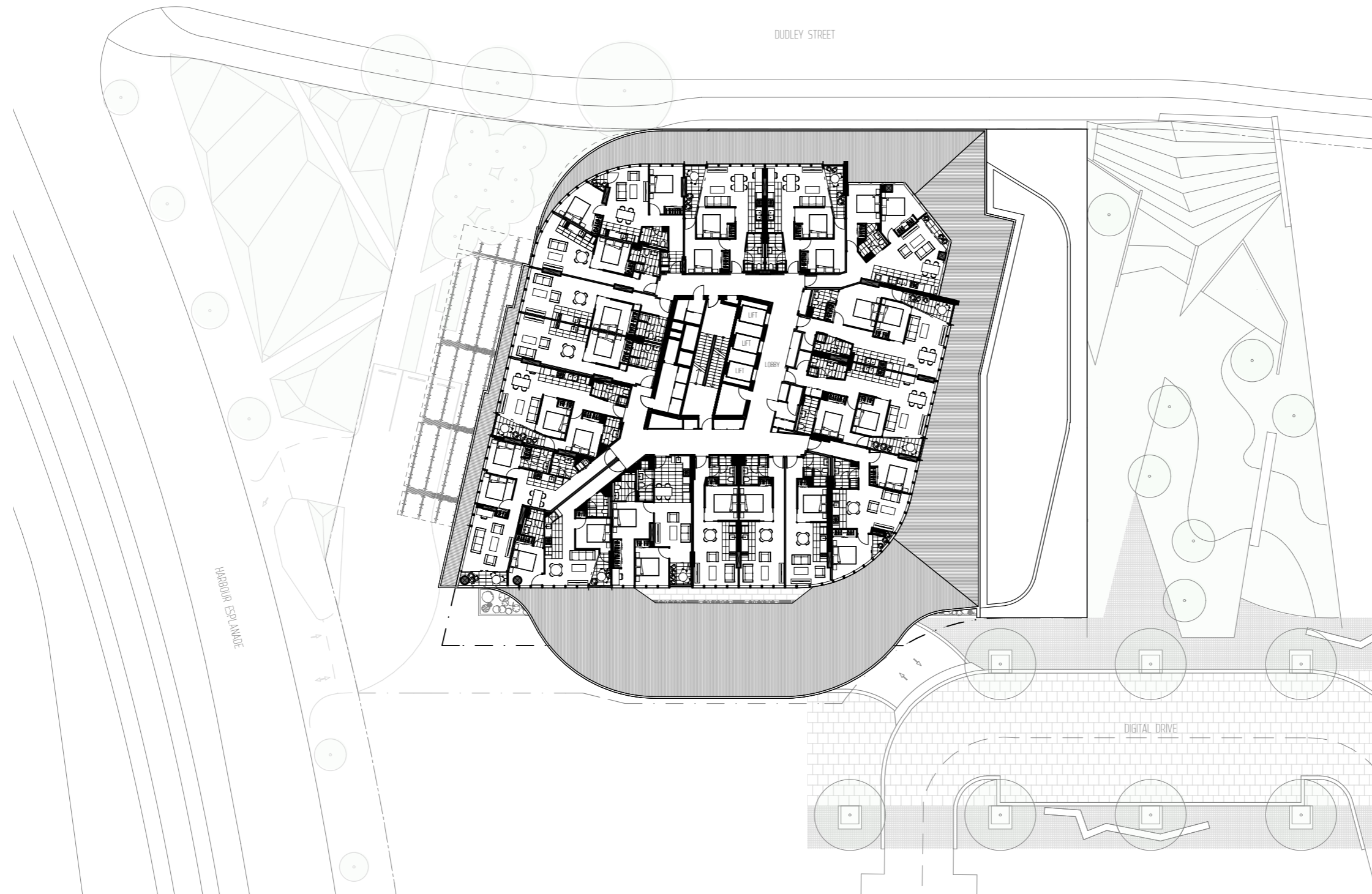


FLOORPLANS

THE ALTUS

APARTMENT LEVEL TYPICAL



0m 500m 1000m 1500m

The information provided is illustrative only and may not be relied upon. In particular the final area dimensions of any apartment sold will be determined by the contract of sale and may differ from that depicted. Whilst every effort is made to provide accurate and complete information, the developer does not warrant or represent that the information in this floor plan is free from errors or omissions or is suitable for your intended use. Subject to any terms implied by law which cannot be excluded, the developer accepts no responsibility for any loss, damage, cost or expense (whether direct or indirect) by you as a result of any error, omission or misrepresentation in information. The area of the apartments has been measured to the boundaries of the floor and where a boundary comprises a wall or glass line, and includes any ducts. All dimensions are approximate. All information is subject to change without notice. Date of publication 30/07/13.

MIMA
Moull Murray Architects

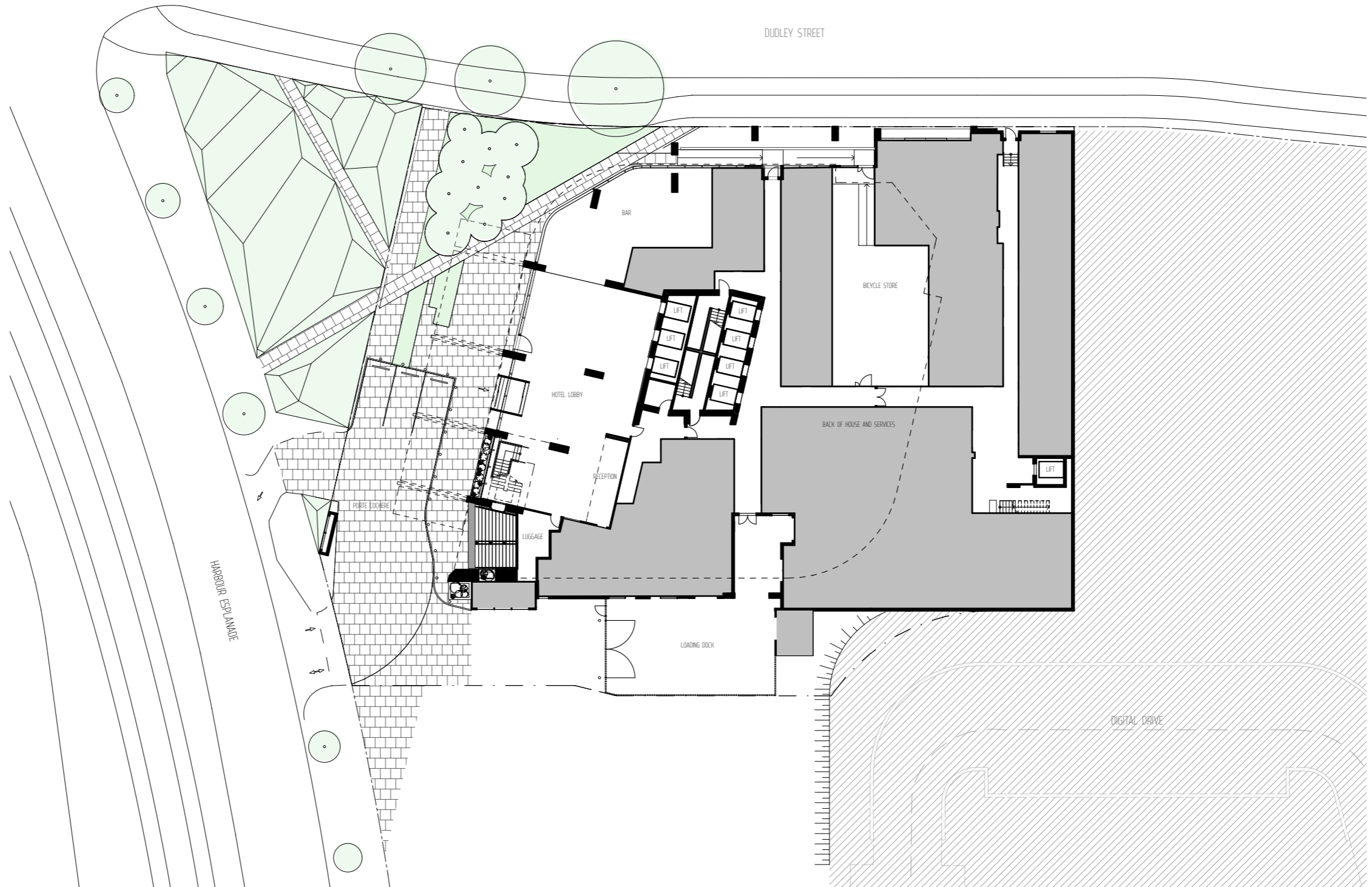


DIGITAL HARBOUR

THEALTUS.COM.AU

THE ALTUS

Level 0 | HARBOUR ESPLANADE



0m 500m 1000m 1500m

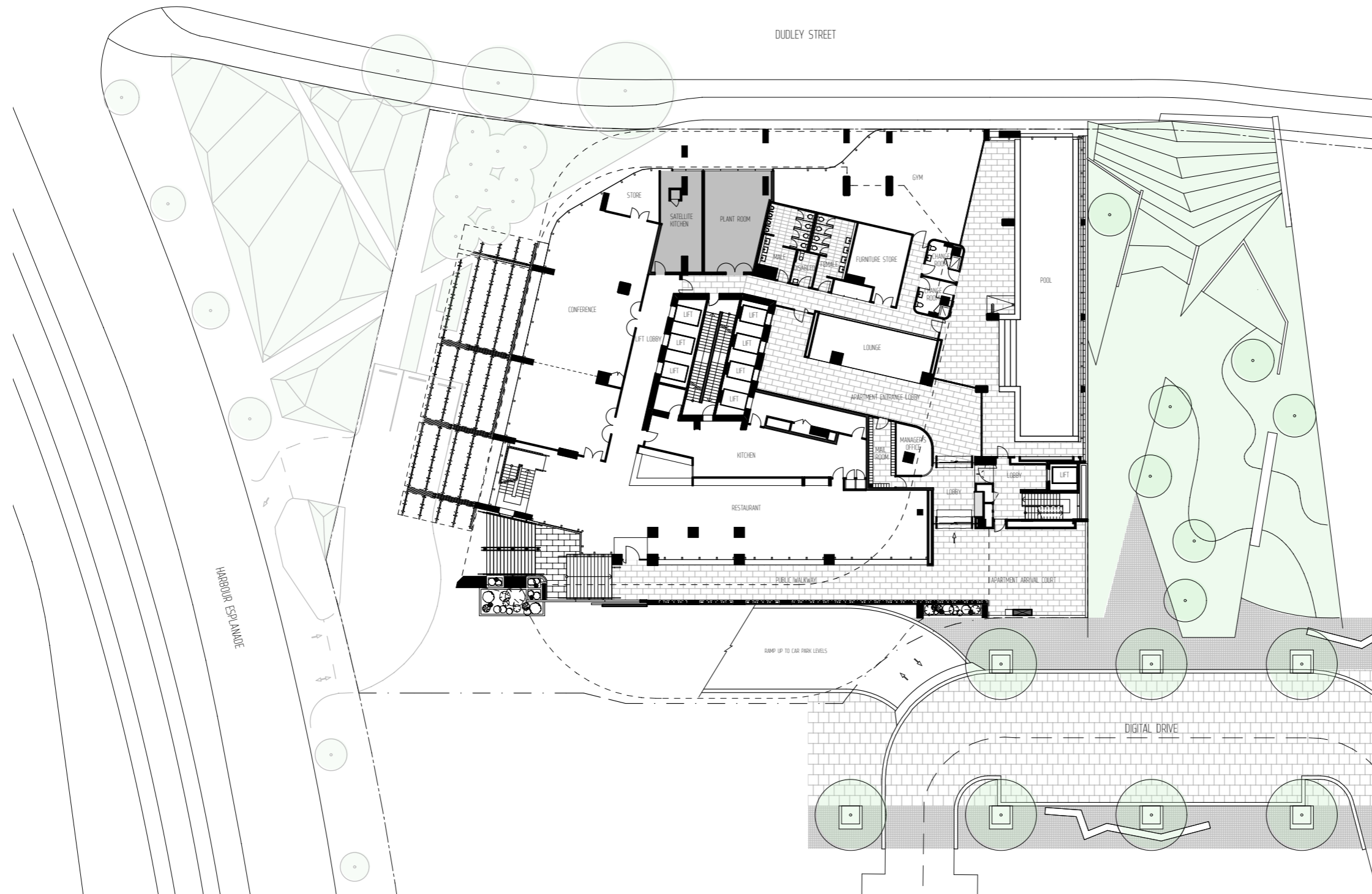
The information provided is illustrative only and may not be relied upon. In particular the final area dimensions of any apartment sold will be determined by the contract of sale and may differ from that depicted. Whilst every effort is made to provide accurate and complete information, the developer does not warrant or represent that the information in this floor plan is free from errors or omissions or is suitable for your intended use. Subject to any terms implied by law which cannot be excluded, the developer accepts no responsibility for any loss, damage, cost or expense (whether direct or indirect) by you as a result of any error, omission or misrepresentation in information. The area of the apartments has been measured to the boundaries of the floor and where a boundary comprises a wall or glass line, and includes any ducts. All dimensions are approximate. All information is subject to change without notice. Date of publication 30/07/13.



DIGITAL HARBOUR

THE ALTUS

Level 1 | DIGITAL DRIVE



0m 500m 1000m 1500m

The information provided is illustrative only and may not be relied upon. In particular the final area dimensions of any apartment sold will be determined by the contract of sale and may differ from that depicted. Whilst every effort is made to provide accurate and complete information, the developer does not warrant or represent that the information in this floor plan is free from errors or omissions or is suitable for your intended use. Subject to any terms implied by law which cannot be excluded, the developer accepts no responsibility for any loss, damage, cost or expense (whether direct or indirect) by you as a result of any error, omission or misrepresentation in information. The area of the apartments has been measured to the boundaries of the floor and where a boundary comprises a wall or glass line, and includes any ducts. All dimensions are approximate. All information is subject to change without notice. Date of publication 30/07/13.

MIMA
Moull Murray Architects


DIGITAL HARBOUR

THEALTUS.COM.AU

THE ALTUS

Level 18



The information provided is illustrative only and may not be relied upon. In particular the final area dimensions of any apartment sold will be determined by the contract of sale and may differ from that depicted. Whilst every effort is made to provide accurate and complete information, the developer does not warrant or represent that the information in this floor plan is free from errors or omissions or is suitable for your intended use. Subject to any terms implied by law which cannot be excluded, the developer accepts no responsibility for any loss, damage, cost or expense (whether direct or indirect) by you as a result of any error, omission or misrepresentation in information. The area of the apartments has been measured to the boundaries of the floor and where a boundary comprises a wall or glass line, and includes any ducts. All dimensions are approximate. All information is subject to change without notice. Date of publication 30/07/13.



DIGITAL HARBOUR

THE ALTUS

Level 19 | 20 | 21 | 24 | 25 |
28 | 29 | 32 | 33 | 34



0m 200m 400m 800m

The information provided is illustrative only and may not be relied upon. In particular the final area dimensions of any apartment sold will be determined by the contract of sale and may differ from that depicted. Whilst every effort is made to provide accurate and complete information, the developer does not warrant or represent that the information in this floor plan is free from errors or omissions or is suitable for your intended use. Subject to any terms implied by law which cannot be excluded, the developer accepts no responsibility for any loss, damage, cost or expense (whether direct or indirect) by you as a result of any error, omission or misrepresentation in information. The area of the apartments has been measured to the boundaries of the floor and where a boundary comprises a wall or glass line, and includes any ducts. All dimensions are approximate. All information is subject to change without notice. Date of publication 30/07/13.

MIMA
Moull Murray Architects



DIGITAL HARBOUR

THEALTUS.COM.AU

THE ALTUS

Level
22 | 23 | 26 | 27 | 30 | 31



0m 200m 400m 800m

The information provided is illustrative only and may not be relied upon. In particular the final area dimensions of any apartment sold will be determined by the contract of sale and may differ from that depicted. Whilst every effort is made to provide accurate and complete information, the developer does not warrant or represent that the information in this floor plan is free from errors or omissions or is suitable for your intended use. Subject to any terms implied by law which cannot be excluded, the developer accepts no responsibility for any loss, damage, cost or expense (whether direct or indirect) by you as a result of any error, omission or misrepresentation in information. The area of the apartments has been measured to the boundaries of the floor and where a boundary comprises a wall or glass line, and includes any ducts. All dimensions are approximate. All information is subject to change without notice. Date of publication 30/07/13.



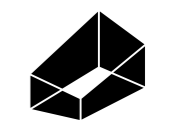
DIGITAL HARBOUR

THE ALTUS

Level 35 – 36



The information provided is illustrative only and may not be relied upon. In particular the final area dimensions of any apartment sold will be determined by the contract of sale and may differ from that depicted. Whilst every effort is made to provide accurate and complete information, the developer does not warrant or represent that the information in this floor plan is free from errors or omissions or is suitable for your intended use. Subject to any terms implied by law which cannot be excluded, the developer accepts no responsibility for any loss, damage, cost or expense (whether direct or indirect) by you as a result of any error, omission or misrepresentation in information. The area of the apartments has been measured to the boundaries of the floor and where a boundary comprises a wall or glass line, and includes any ducts. All dimensions are approximate. All information is subject to change without notice. Date of publication 30/07/13.



DIGITAL HARBOUR

THEALTUS.COM.AU

THE ALTUS

3 BEDROOM
2.5 BATHROOM + 1 STUDY

TYPE PH01

APARTMENT NUMBER

35 . 01

36 . 01

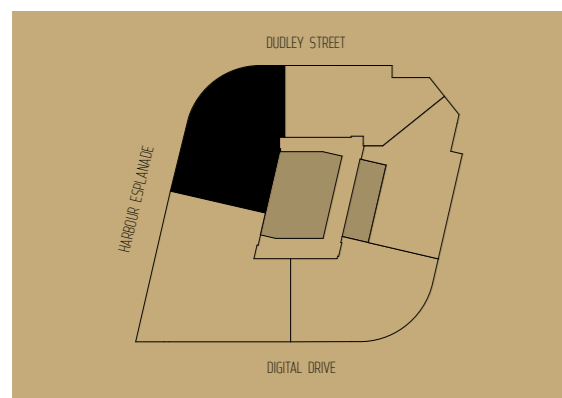
AREA

Internal 205.86 sqm

Winter garden 26.88 sqm

Balcony 0 sqm

Total 232.74 sqm



0m 1m 2m 4m

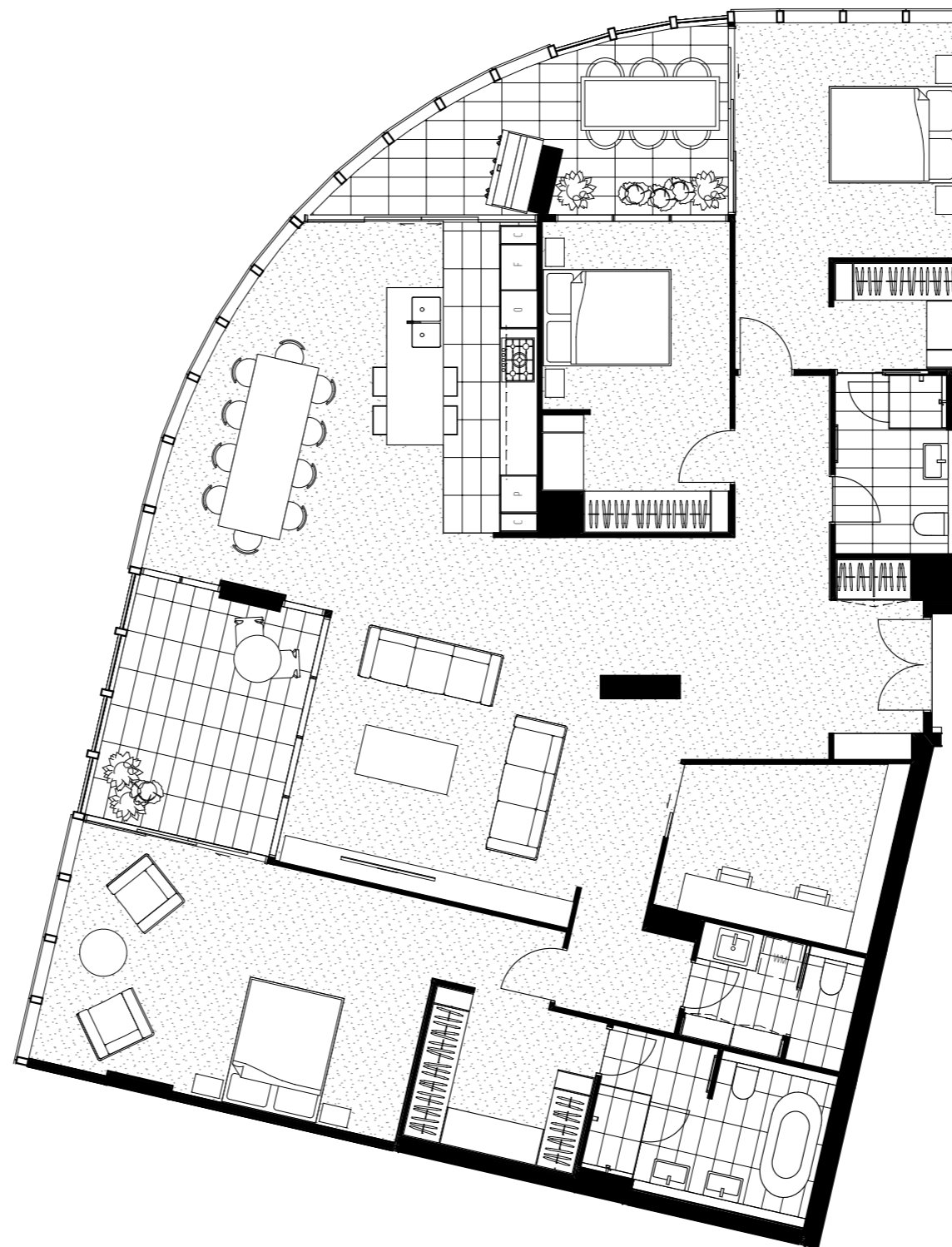
The information provided is illustrative only and may not be relied upon. In particular the final area dimensions of any apartment sold will be determined by the contract of sale and may differ from that depicted. Whilst every effort is made to provide accurate and complete information, the developer does not warrant or represent that the information in this floor plan is free from errors or omissions or is suitable for your intended use. Subject to any terms implied by law which cannot be excluded, the developer accepts no responsibility for any loss, damage, cost or expense (whether direct or indirect) by you as a result of any error, omission or misrepresentation in information. The area of the apartments has been measured to the boundaries of the floor and where a boundary comprises a wall or glass line, and includes any ducts. All dimensions are approximate. All information is subject to change without notice. Date of publication 30/07/13.

MMA
Moull Murray Architects



DIGITAL HARBOUR

THEALTUS.COM.AU

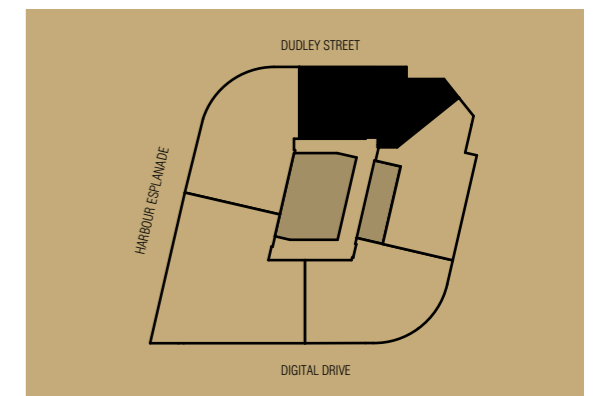
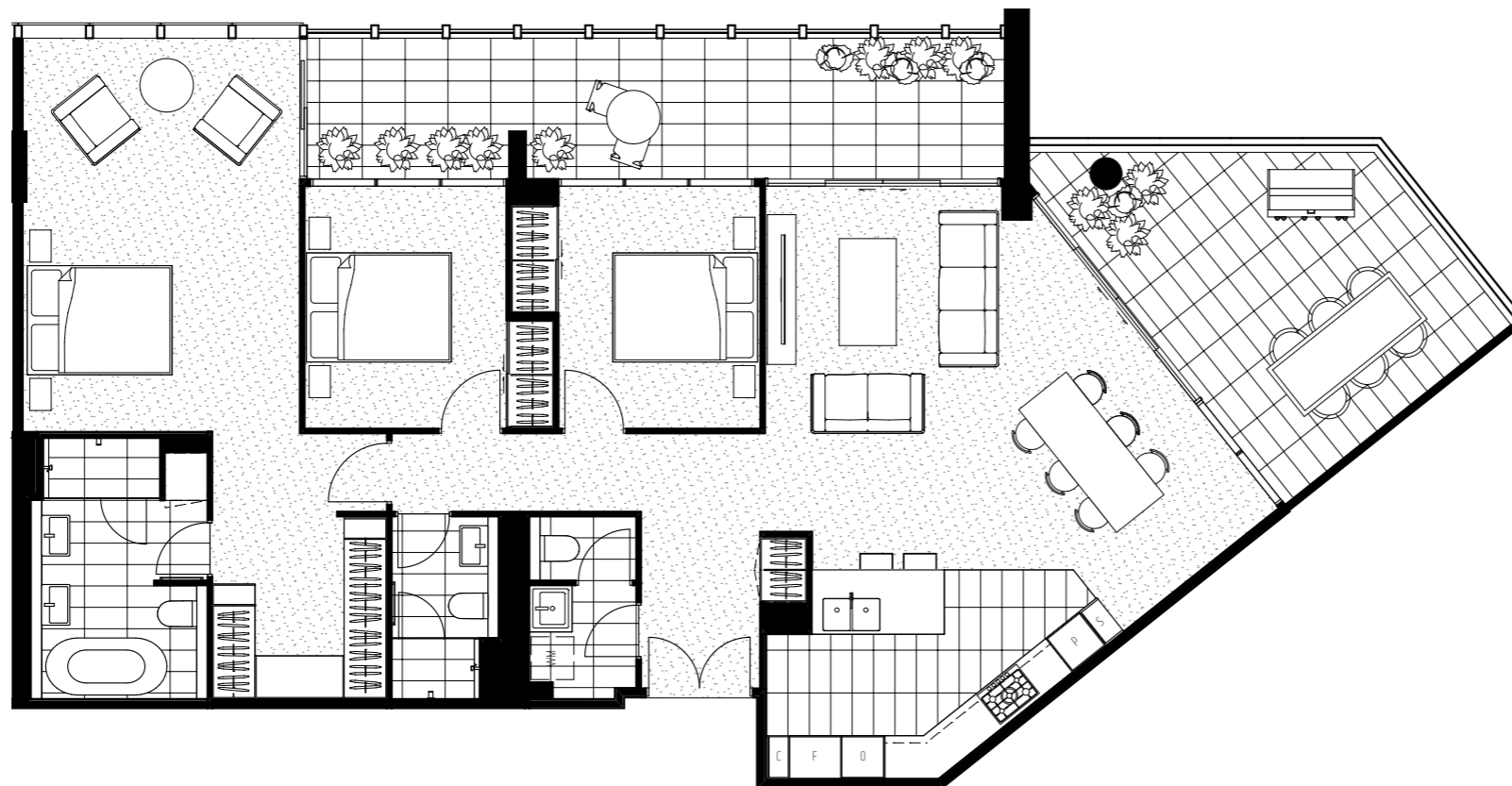


THE ALTUS

3 BEDROOM + 2.5 BATHROOM

TYPE PH02
 APARTMENT NUMBER
 35 . 02
 36 . 02

AREA	
Internal	129.80 sqm
Winter garden	19.30 sqm
Balcony	19.25 sqm
Total	168.35 sqm



The information provided is illustrative only and may not be relied upon. In particular the final area dimensions of any apartment sold will be determined by the contract of sale and may differ from that depicted. Whilst every effort is made to provide accurate and complete information, the developer does not warrant or represent that the information in this floor plan is free from errors or omissions or is suitable for your intended use. Subject to any terms implied by law which cannot be excluded, the developer accepts no responsibility for any loss, damage, cost or expense (whether direct or indirect) by you as a result of any error, omission or misrepresentation in information. The area of the apartments has been measured to the boundaries of the floor and where a boundary comprises a wall or glass line, and includes any ducts. All dimensions are approximate. All information is subject to change without notice. Date of publication 30/07/13.



DIGITAL HARBOUR

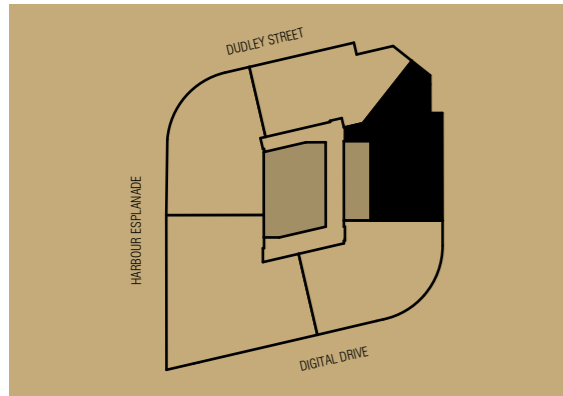
THEALTUS.COM.AU

THE ALTUS

3 BEDROOM
2 BATHROOM + 1 STUDY NOOK

TYPE PH03
APARTMENT NUMBER
35.03
36.03

AREA
Internal 133.79 sqm
Winter garden 19.32 sqm
Balcony 19.25 sqm
Total 172.36 sqm

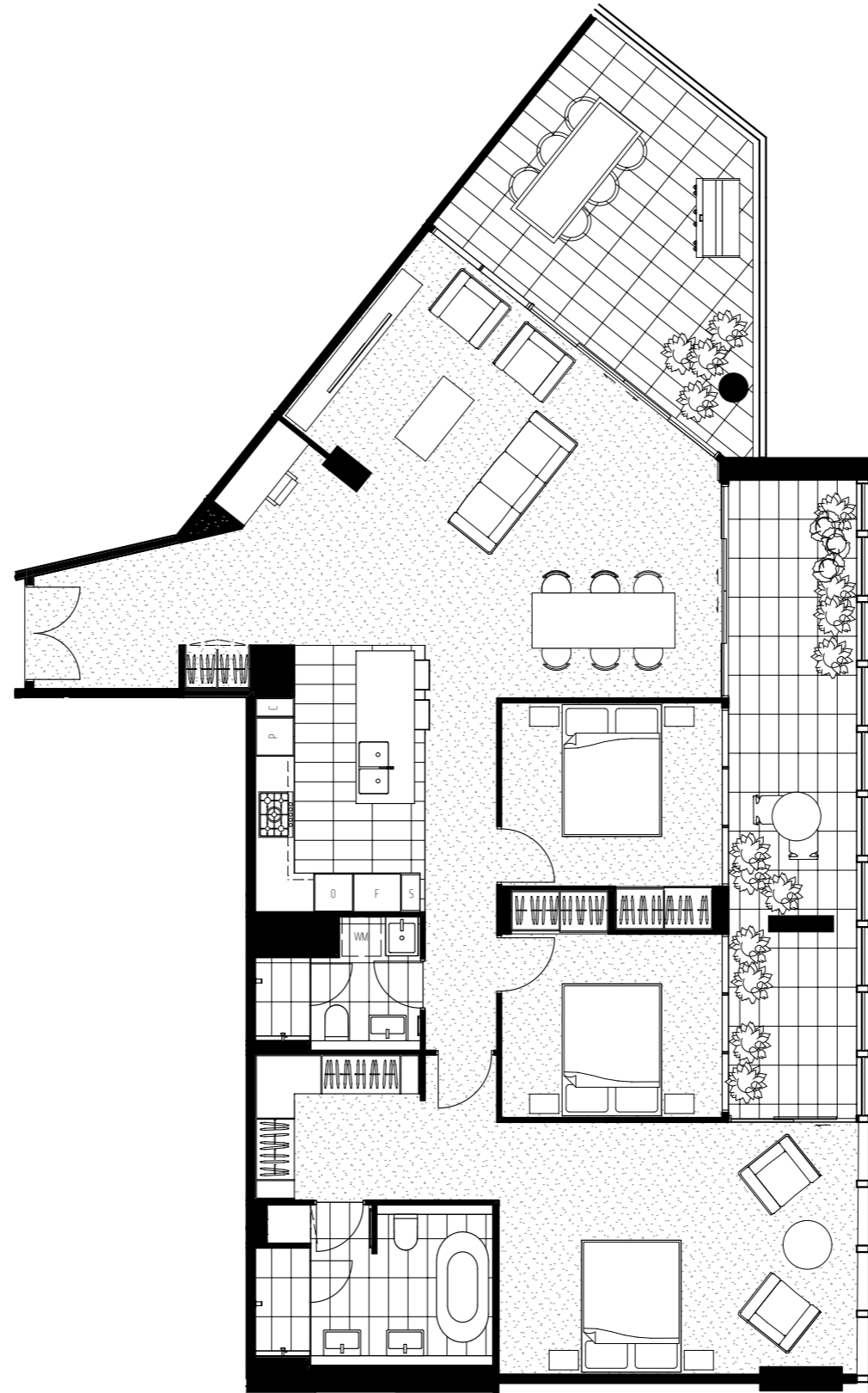


0m 1m 2m 4m

The information provided is illustrative only and may not be relied upon. In particular the final area dimensions of any apartment sold will be determined by the contract of sale and may differ from that depicted. Whilst every effort is made to provide accurate and complete information, the developer does not warrant or represent that the information in this floor plan is free from errors or omissions or is suitable for your intended use. Subject to any terms implied by law which cannot be excluded, the developer accepts no responsibility for any loss, damage, cost or expense (whether direct or indirect) by you as a result of any error, omission or misrepresentation in information. The area of the apartments has been measured to the boundaries of the floor and where a boundary comprises a wall or glass line, and includes any ducts. All dimensions are approximate. All information is subject to change without notice. Date of publication 30/07/13.

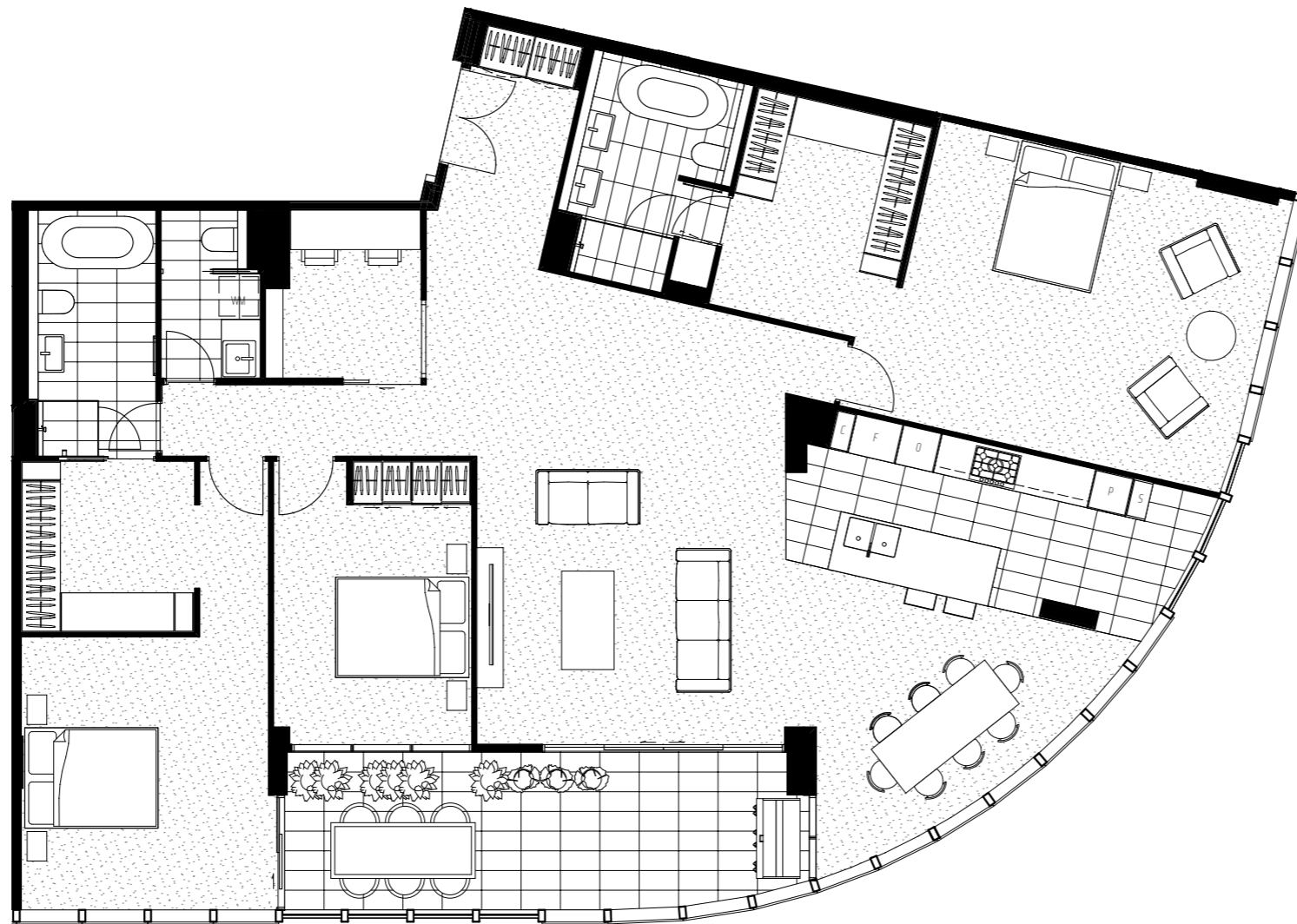


DIGITAL HARBOUR



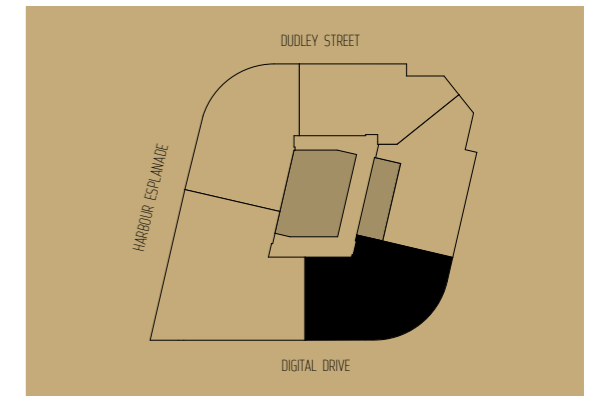
THE ALTUS

3 BEDROOM 2.5 BATHROOM + 1 STUDY



TYPE PH04
APARTMENT NUMBER
35 . 04
36 . 04

AREA	
Internal	187.98 sqm
Winter garden	19.08 sqm
Balcony	0 sqm
Total	207.06 sqm



The information provided is illustrative only and may not be relied upon. In particular the final area dimensions of any apartment sold will be determined by the contract of sale and may differ from that depicted. Whilst every effort is made to provide accurate and complete information, the developer does not warrant or represent that the information in this floor plan is free from errors or omissions or is suitable for your intended use. Subject to any terms implied by law which cannot be excluded, the developer accepts no responsibility for any loss, damage, cost or expense (whether direct or indirect) by you as a result of any error, omission or misrepresentation in information. The area of the apartments has been measured to the boundaries of the floor and where a boundary comprises a wall or glass line, and includes any ducts. All dimensions are approximate. All information is subject to change without notice. Date of publication 30/07/13.



DIGITAL HARBOUR

THEALTUS.COM.AU

THE ALTUS

3 BEDROOM
3.5 BATHROOM + 1 STUDY

TYPE PH05
APARTMENT NUMBER

35.05

36.05

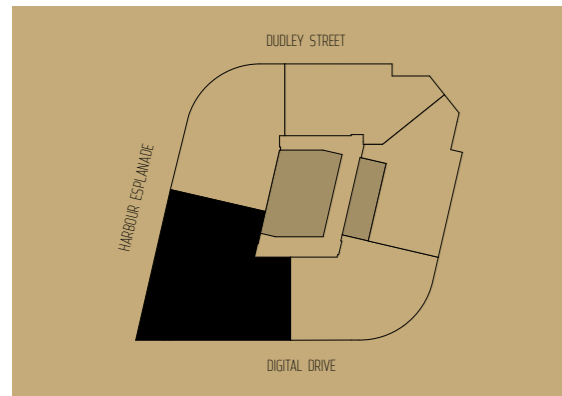
AREA

Internal 246.43 sqm

Winter garden 57.93 sqm

Balcony 0 sqm

Total 304.36 sqm



0m 1m 2m 4m

The information provided is illustrative only and may not be relied upon. In particular the final area dimensions of any apartment sold will be determined by the contract of sale and may differ from that depicted. Whilst every effort is made to provide accurate and complete information, the developer does not warrant or represent that the information in this floor plan is free from errors or omissions or is suitable for your intended use. Subject to any terms implied by law which cannot be excluded, the developer accepts no responsibility for any loss, damage, cost or expense (whether direct or indirect) by you as a result of any error, omission or misrepresentation in information. The area of the apartments has been measured to the boundaries of the floor and where a boundary comprises a wall or glass line, and includes any ducts. All dimensions are approximate. All information is subject to change without notice. Date of publication 30/07/13.

MMA
Moull Murray Architects



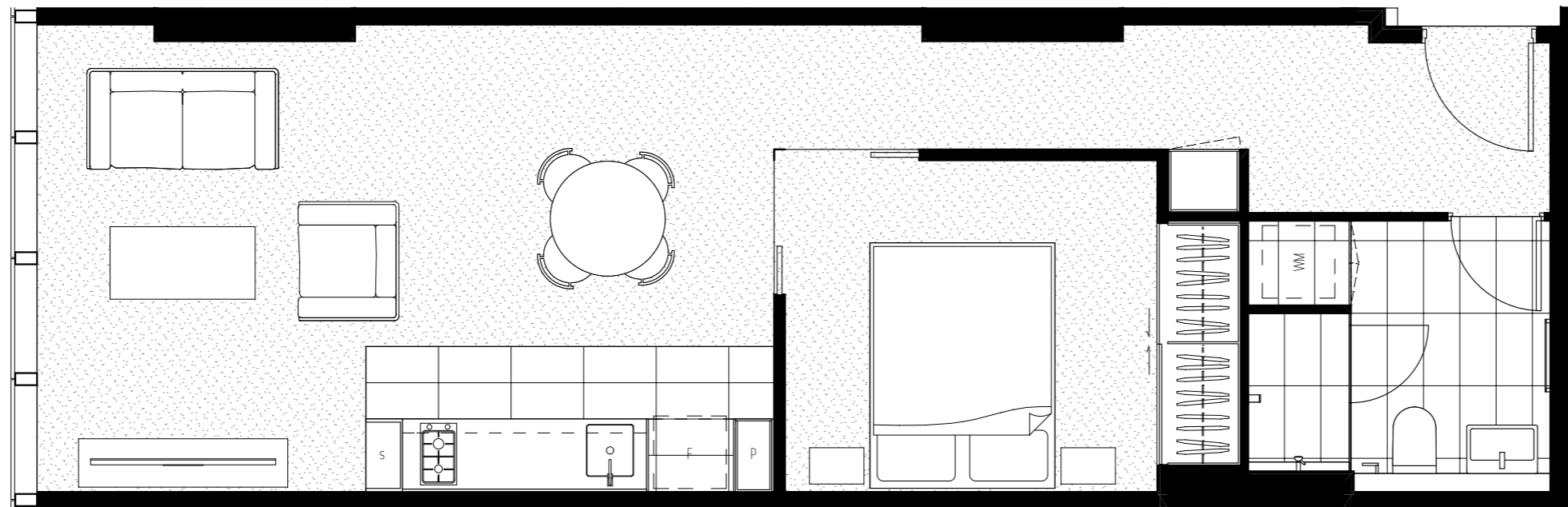
DIGITAL HARBOUR

THEALTUS.COM.AU



THE ALTUS

1 BEDROOM + 1 BATHROOM



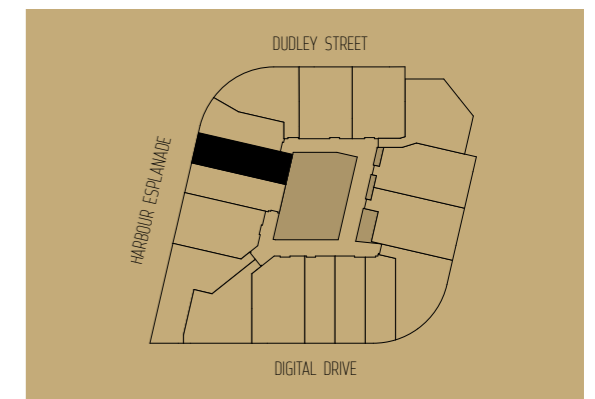
TYPE T01

APARTMENT NUMBER

19.01	27.01	18.17	27.17
20.01	28.01	19.17	28.17
21.01	29.01	20.17	29.17
22.01	30.01	21.17	30.17
23.01	31.01	22.17	31.17
24.01	32.01	23.17	32.17
25.01	33.01	24.17	33.17
26.01	34.01	25.17	34.17
		26.17	

AREA

Internal	50.97 sqm
Winter garden	0 sqm
Total	50.97 sqm



The information provided is illustrative only and may not be relied upon. In particular the final area dimensions of any apartment sold will be determined by the contract of sale and may differ from that depicted. Whilst every effort is made to provide accurate and complete information, the developer does not warrant or represent that the information in this floor plan is free from errors or omissions or is suitable for your intended use. Subject to any terms implied by law which cannot be excluded, the developer accepts no responsibility for any loss, damage, cost or expense (whether direct or indirect) by you as a result of any error, omission or misrepresentation in information. The area of the apartments has been measured to the boundaries of the floor and where a boundary comprises a wall or glass line, and includes any ducts. All dimensions are approximate. All information is subject to change without notice. Date of publication 30/07/13.

THE ALTUS

1 BEDROOM + 1 BATHROOM

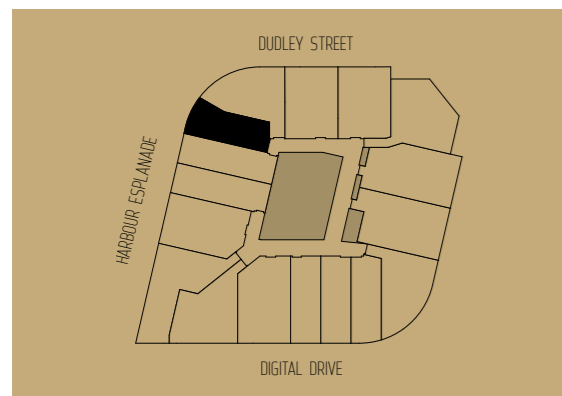
TYPE T02

APARTMENT NUMBER

18.02	27.02
19.02	28.02
20.02	29.02
21.02	30.02
22.02	31.02
23.02	32.02
24.02	33.02
25.02	34.02
26.02	

AREA

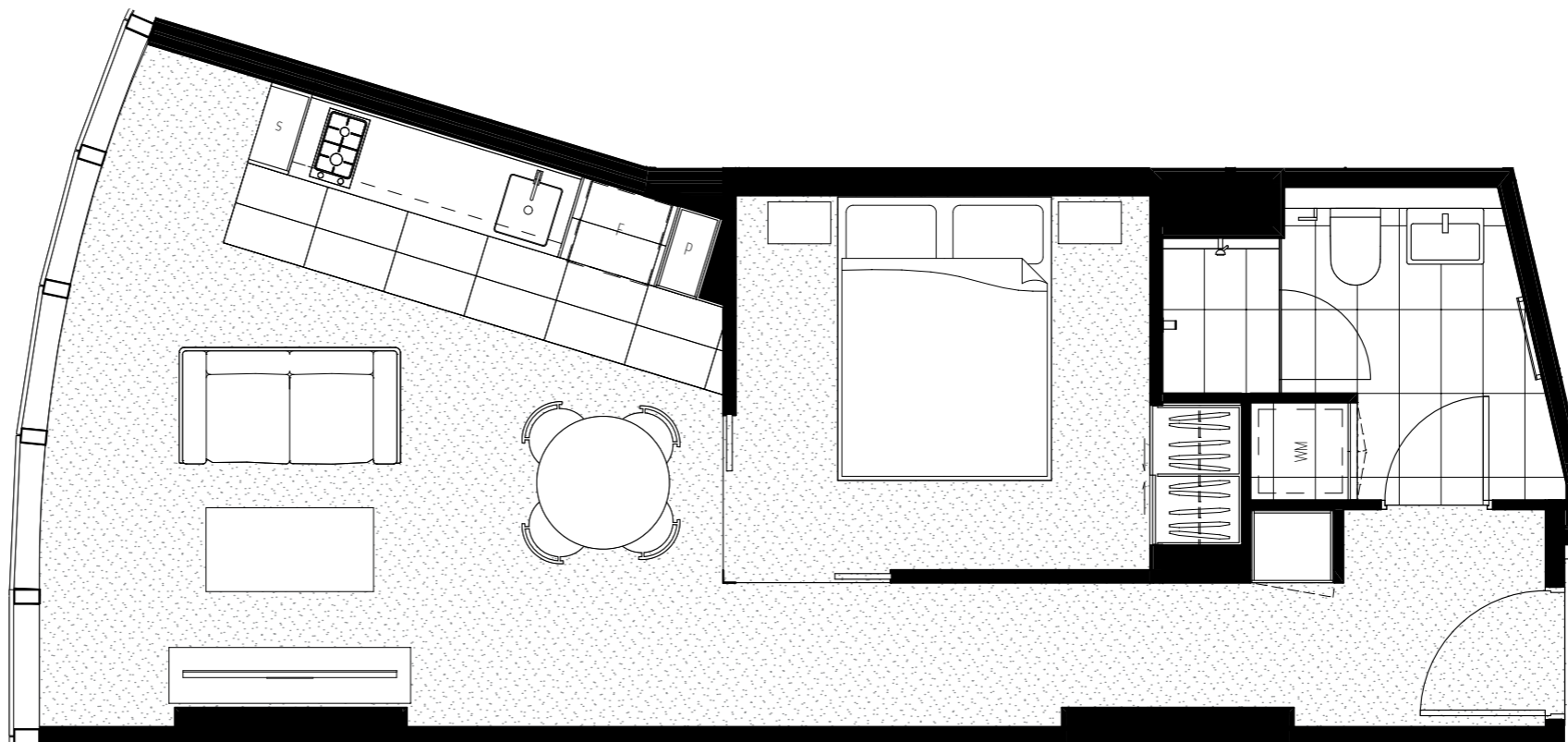
Internal	45.47 sqm
Winter garden	0 sqm
Total	45.47 sqm



The information provided is illustrative only and may not be relied upon. In particular the final area dimensions of any apartment sold will be determined by the contract of sale and may differ from that depicted. Whilst every effort is made to provide accurate and complete information, the developer does not warrant or represent that the information in this floor plan is free from errors or omissions or is suitable for your intended use. Subject to any terms implied by law which cannot be excluded, the developer accepts no responsibility for any loss, damage, cost or expense (whether direct or indirect) by you as a result of any error, omission or misrepresentation in information. The area of the apartments has been measured to the boundaries of the floor and where a boundary comprises a wall or glass line, and includes any ducts. All dimensions are approximate. All information is subject to change without notice. Date of publication 30/07/13.



DIGITAL HARBOUR



THE ALTUS

1 BEDROOM + 1 BATHROOM

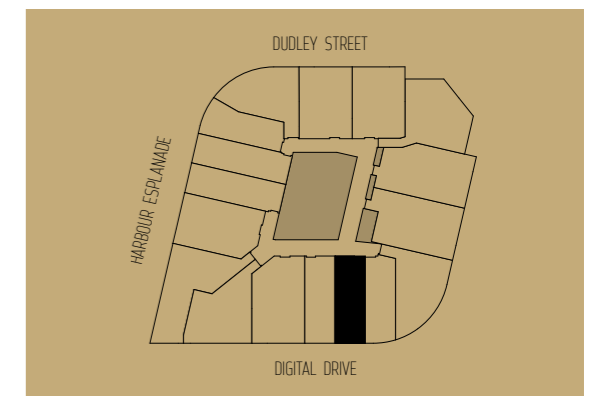
TYPE T03

APARTMENT NUMBER

18.11	27.11	18.12	27.12
19.11	28.11	19.12	28.12
20.11	29.11	20.12	29.12
21.11	30.11	21.12	30.12
22.11	31.11	22.12	31.12
23.11	32.11	23.12	32.12
24.11	33.11	24.12	33.12
25.11	34.11	25.12	34.12
26.11		26.12	

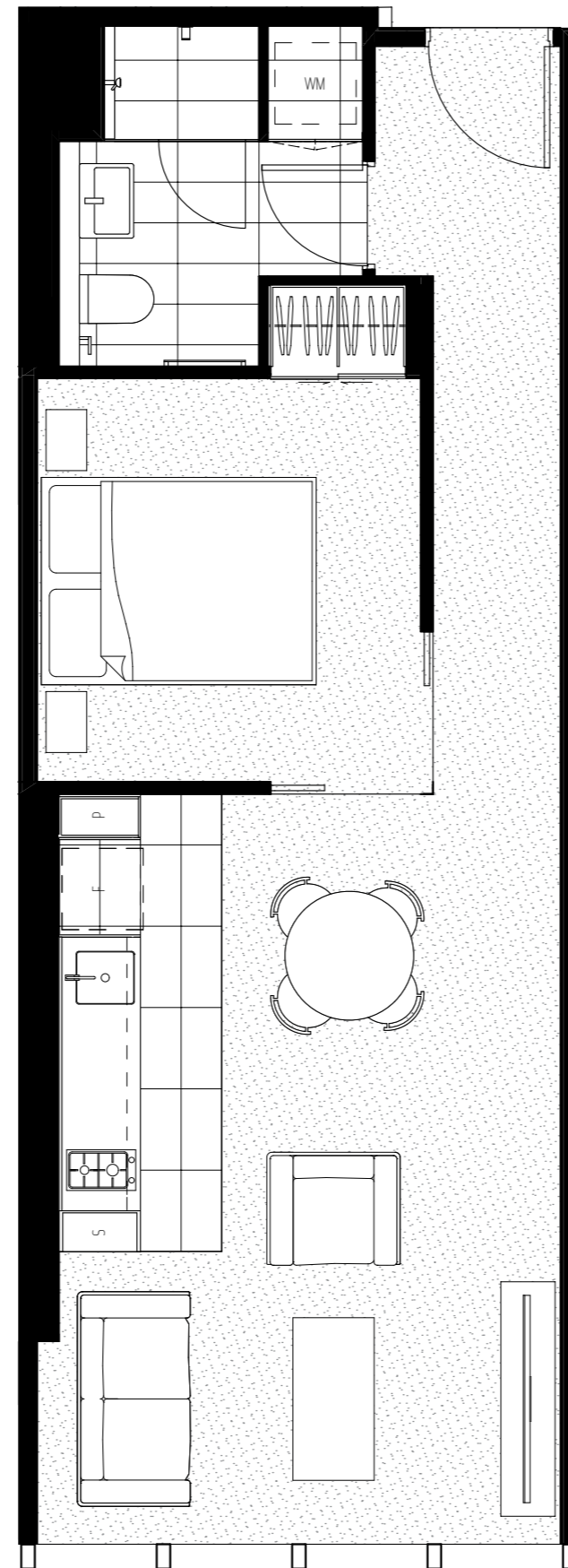
AREA

Internal	45.66 sqm
Winter garden	0 sqm
Total	45.66 sqm



0m 0.5m 1m 2m

The information provided is illustrative only and may not be relied upon. In particular the final area dimensions of any apartment sold will be determined by the contract of sale and may differ from that depicted. Whilst every effort is made to provide accurate and complete information, the developer does not warrant or represent that the information in this floor plan is free from errors or omissions or is suitable for your intended use. Subject to any terms implied by law which cannot be excluded, the developer accepts no responsibility for any loss, damage, cost or expense (whether direct or indirect) by you as a result of any error, omission or misrepresentation in information. The area of the apartments has been measured to the boundaries of the floor and where a boundary comprises a wall or glass line, and includes any ducts. All dimensions are approximate. All information is subject to change without notice. Date of publication 30/07/13.



THE ALTUS

2 BEDROOM + 1 BATHROOM

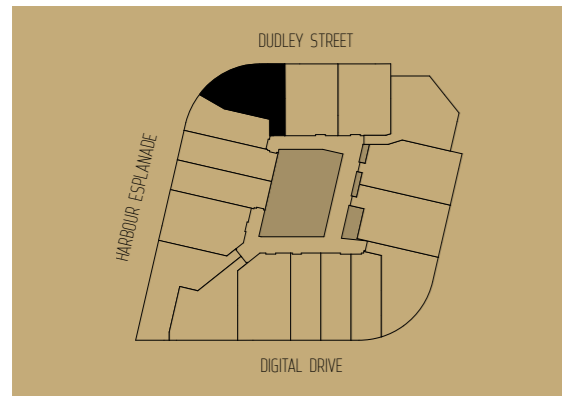
TYPE T04

APARTMENT NUMBER

18.03	27.03
19.03	28.03
20.03	29.03
21.03	30.03
22.03	31.03
23.03	32.03
24.03	33.03
25.03	34.03
26.03	

AREA

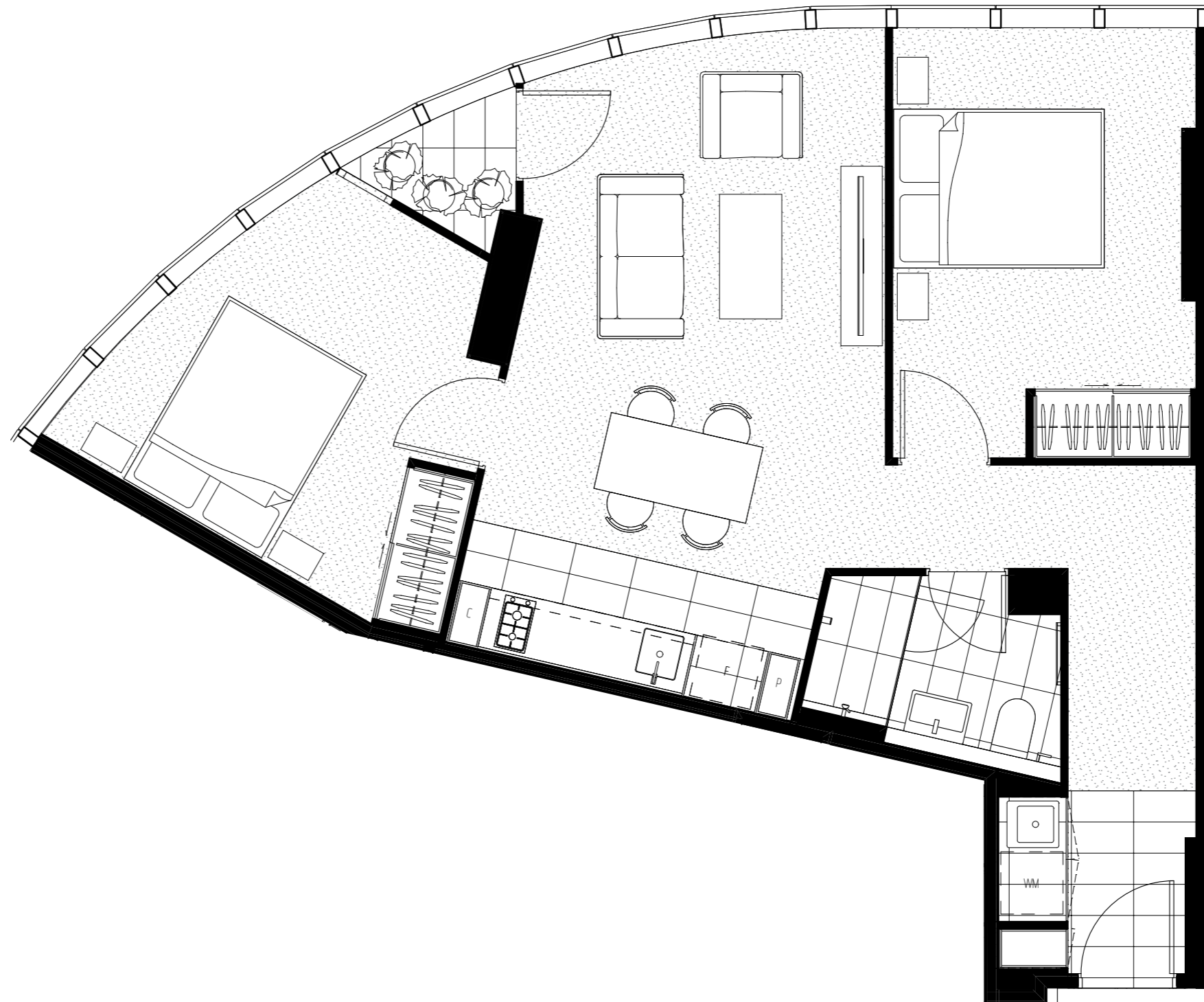
Internal	64.76 sqm
Winter garden	1.83 sqm
Total	66.59 sqm



The information provided is illustrative only and may not be relied upon. In particular the final area dimensions of any apartment sold will be determined by the contract of sale and may differ from that depicted. Whilst every effort is made to provide accurate and complete information, the developer does not warrant or represent that the information in this floor plan is free from errors or omissions or is suitable for your intended use. Subject to any terms implied by law which cannot be excluded, the developer accepts no responsibility for any loss, damage, cost or expense (whether direct or indirect) by you as a result of any error, omission or misrepresentation in information. The area of the apartments has been measured to the boundaries of the floor and where a boundary comprises a wall or glass line, and includes any ducts. All dimensions are approximate. All information is subject to change without notice. Date of publication 30/07/13.

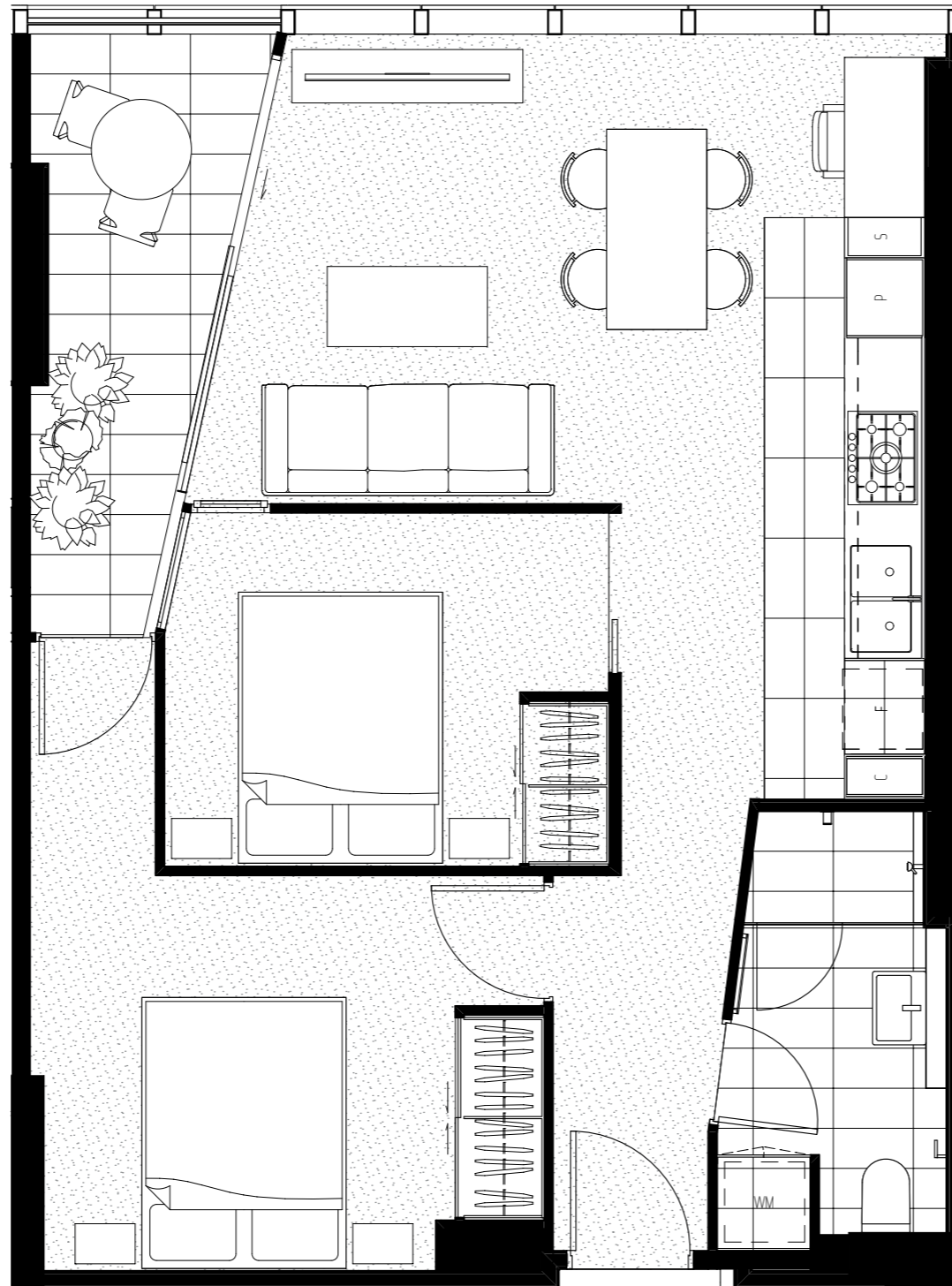


DIGITAL HARBOUR



THE ALTUS

2 BEDROOM 1 BATHROOM + 1 STUDY NOOK



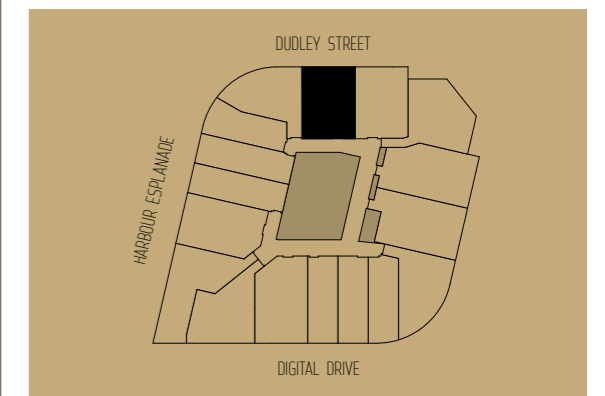
TYPE T05

APARTMENT NUMBER

18.04	27.04	18.05	27.05
19.04	28.04	19.05	28.05
20.04	29.04	20.05	29.05
21.04	30.04	21.05	30.05
22.04	31.04	22.05	31.05
23.04	32.04	23.05	32.05
24.04	33.04	24.05	33.05
25.04	34.04	25.05	34.05
26.04		26.05	

AREA

Internal	58.58 sqm
Winter garden	6.48 sqm
Total	65.06 sqm



0m 0.5m 1m 2m

The information provided is illustrative only and may not be relied upon. In particular the final area dimensions of any apartment sold will be determined by the contract of sale and may differ from that depicted. Whilst every effort is made to provide accurate and complete information, the developer does not warrant or represent that the information in this floor plan is free from errors or omissions or is suitable for your intended use. Subject to any terms implied by law which cannot be excluded, the developer accepts no responsibility for any loss, damage, cost or expense (whether direct or indirect) by you as a result of any error, omission or misrepresentation in information. The area of the apartments has been measured to the boundaries of the floor and where a boundary comprises a wall or glass line, and includes any ducts. All dimensions are approximate. All information is subject to change without notice. Date of publication 30/07/13.

MIMA
Moull Murray Architects



DIGITAL HARBOUR

THEALTUS.COM.AU

THE ALTUS

2 BEDROOM + 1 BATHROOM

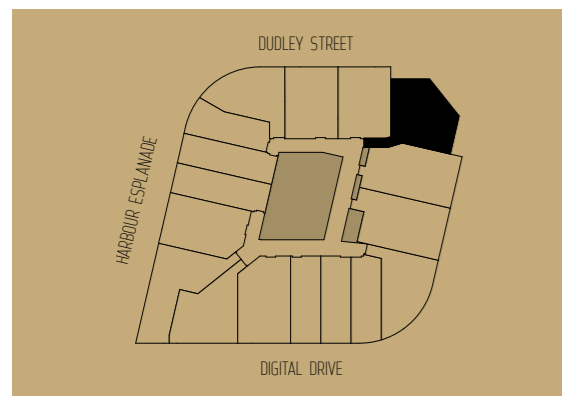
TYPE T06A

APARTMENT NUMBER

18.06	27.06'
19.06	28.06
20.06	29.06
21.06	30.06'
22.06'	31.06'
23.06'	32.06
24.06	33.06
25.06	34.06
26.06'	'TYPE T06A

AREA

Internal	72.57 sqm
Winter garden	2.81 sqm
Total	75.38 sqm



0m 0.5m 1m 2m

The information provided is illustrative only and may not be relied upon. In particular the final area dimensions of any apartment sold will be determined by the contract of sale and may differ from that depicted. Whilst every effort is made to provide accurate and complete information, the developer does not warrant or represent that the information in this floor plan is free from errors or omissions or is suitable for your intended use. Subject to any terms implied by law which cannot be excluded, the developer accepts no responsibility for any loss, damage, cost or expense (whether direct or indirect) by you as a result of any error, omission or misrepresentation in information. The area of the apartments has been measured to the boundaries of the floor and where a boundary comprises a wall or glass line, and includes any ducts. All dimensions are approximate. All information is subject to change without notice. Date of publication 30/07/13.



DIGITAL HARBOUR



THE ALTUS

2 BEDROOM + 1 BATHROOM



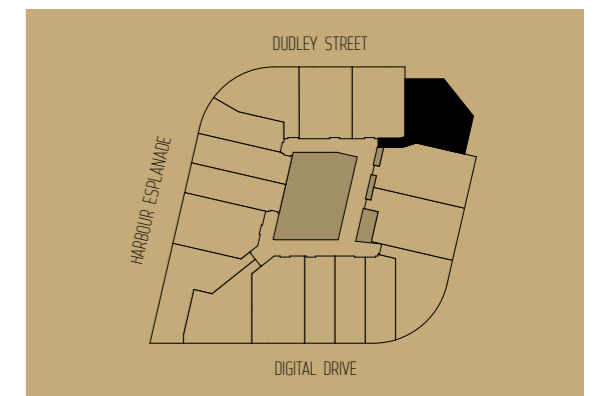
TYPE T06B (MIRRORED)

APARTMENT NUMBER

18 . 06	27 . 06'
19 . 06	28 . 06
20 . 06	29 . 06
21 . 06	30 . 06'
22 . 06'	31 . 06'
23 . 06'	32 . 06
24 . 06	33 . 06
25 . 06	34 . 06
26 . 06'	*TYPE T06A

AREA

Internal	72.57 sqm
Winter garden	2.81 sqm
Total	75.38 sqm



0m 0.5m 1m 2m

The information provided is illustrative only and may not be relied upon. In particular the final area dimensions of any apartment sold will be determined by the contract of sale and may differ from that depicted. Whilst every effort is made to provide accurate and complete information, the developer does not warrant or represent that the information in this floor plan is free from errors or omissions or is suitable for your intended use. Subject to any terms implied by law which cannot be excluded, the developer accepts no responsibility for any loss, damage, cost or expense (whether direct or indirect) by you as a result of any error, omission or misrepresentation in information. The area of the apartments has been measured to the boundaries of the floor and where a boundary comprises a wall or glass line, and includes any ducts. All dimensions are approximate. All information is subject to change without notice. Date of publication 30/07/13.

THE ALTUS

2 BEDROOM + 1 BATHROOM

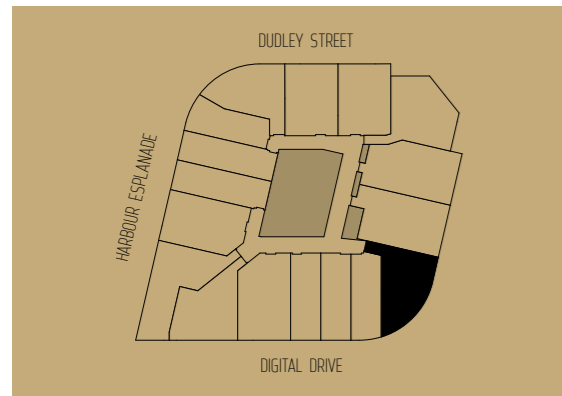
TYPE T07

APARTMENT NUMBER

18.09	27.09
19.09	28.09
20.09	29.09
21.09	30.09
22.09	31.09
23.09	32.09
24.09	33.09
25.09	34.09
26.09	

AREA

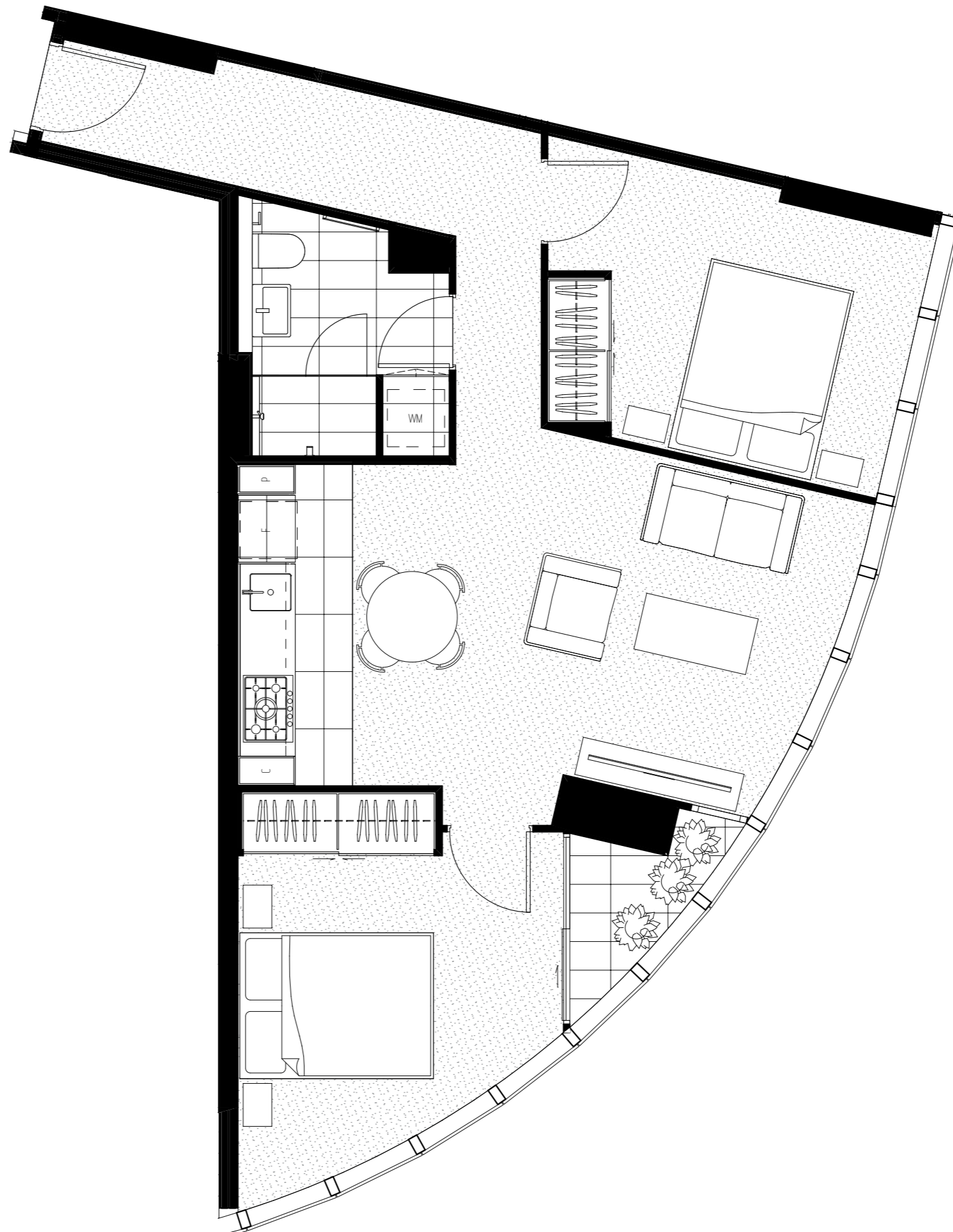
Internal	66.38 sqm
Winter garden	2.57 sqm
Total	68.95 sqm



The information provided is illustrative only and may not be relied upon. In particular the final area dimensions of any apartment sold will be determined by the contract of sale and may differ from that depicted. Whilst every effort is made to provide accurate and complete information, the developer does not warrant or represent that the information in this floor plan is free from errors or omissions or is suitable for your intended use. Subject to any terms implied by law which cannot be excluded, the developer accepts no responsibility for any loss, damage, cost or expense (whether direct or indirect) by you as a result of any error, omission or misrepresentation in information. The area of the apartments has been measured to the boundaries of the floor and where a boundary comprises a wall or glass line, and includes any ducts. All dimensions are approximate. All information is subject to change without notice. Date of publication 30/07/13.

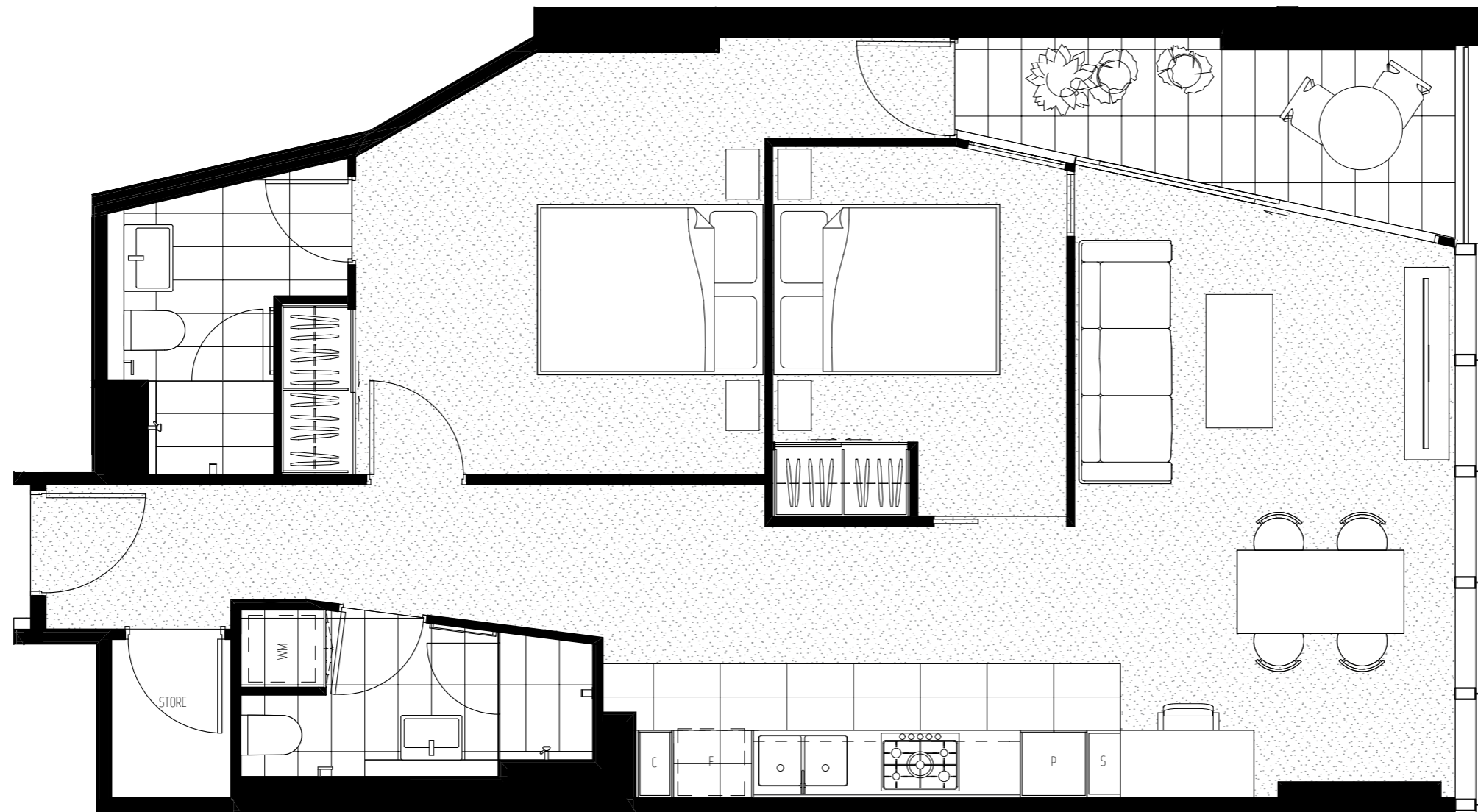


DIGITAL HARBOUR



THE ALTUS

2 BEDROOM
2 BATHROOM + 1 STUDY NOOK



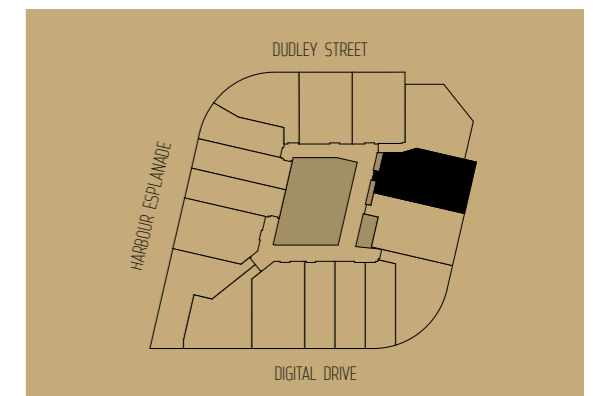
TYPE T08

APARTMENT NUMBER

18.07	27.07
19.07	28.07
20.07	29.07
21.07	30.07
22.07	31.07
23.07	32.07
24.07	33.07
25.07	34.07
26.07	

AREA

Internal	76.55 sqm
Winter garden	6.48 sqm
Total	83.03 sqm



0m 0.5m 1m 2m

The information provided is illustrative only and may not be relied upon. In particular the final area dimensions of any apartment sold will be determined by the contract of sale and may differ from that depicted. Whilst every effort is made to provide accurate and complete information, the developer does not warrant or represent that the information in this floor plan is free from errors or omissions or is suitable for your intended use. Subject to any terms implied by law which cannot be excluded, the developer accepts no responsibility for any loss, damage, cost or expense (whether direct or indirect) by you as a result of any error, omission or misrepresentation in information. The area of the apartments has been measured to the boundaries of the floor and where a boundary comprises a wall or glass line, and includes any ducts. All dimensions are approximate. All information is subject to change without notice. Date of publication 30/07/13.

MIMA
Moull Murray Architects



DIGITAL HARBOUR

THEALTUS.COM.AU

THE ALTUS

2 BEDROOM
2 BATHROOM + 1 STUDY NOOK

TYPE T09

APARTMENT NUMBER

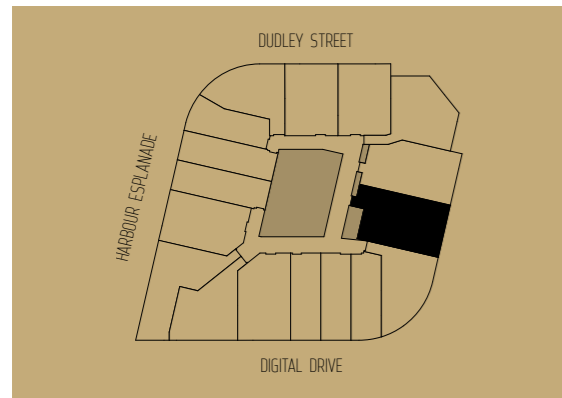
18.08	26.08	34.08
19.08	27.08	
20.08	28.08	
21.08	29.08	
22.08	30.08	
23.08	31.08	
24.08	32.08	
25.08	33.08	

AREA

Internal 75.77 sqm

Winter garden 6.48 sqm

Total 82.25 sqm

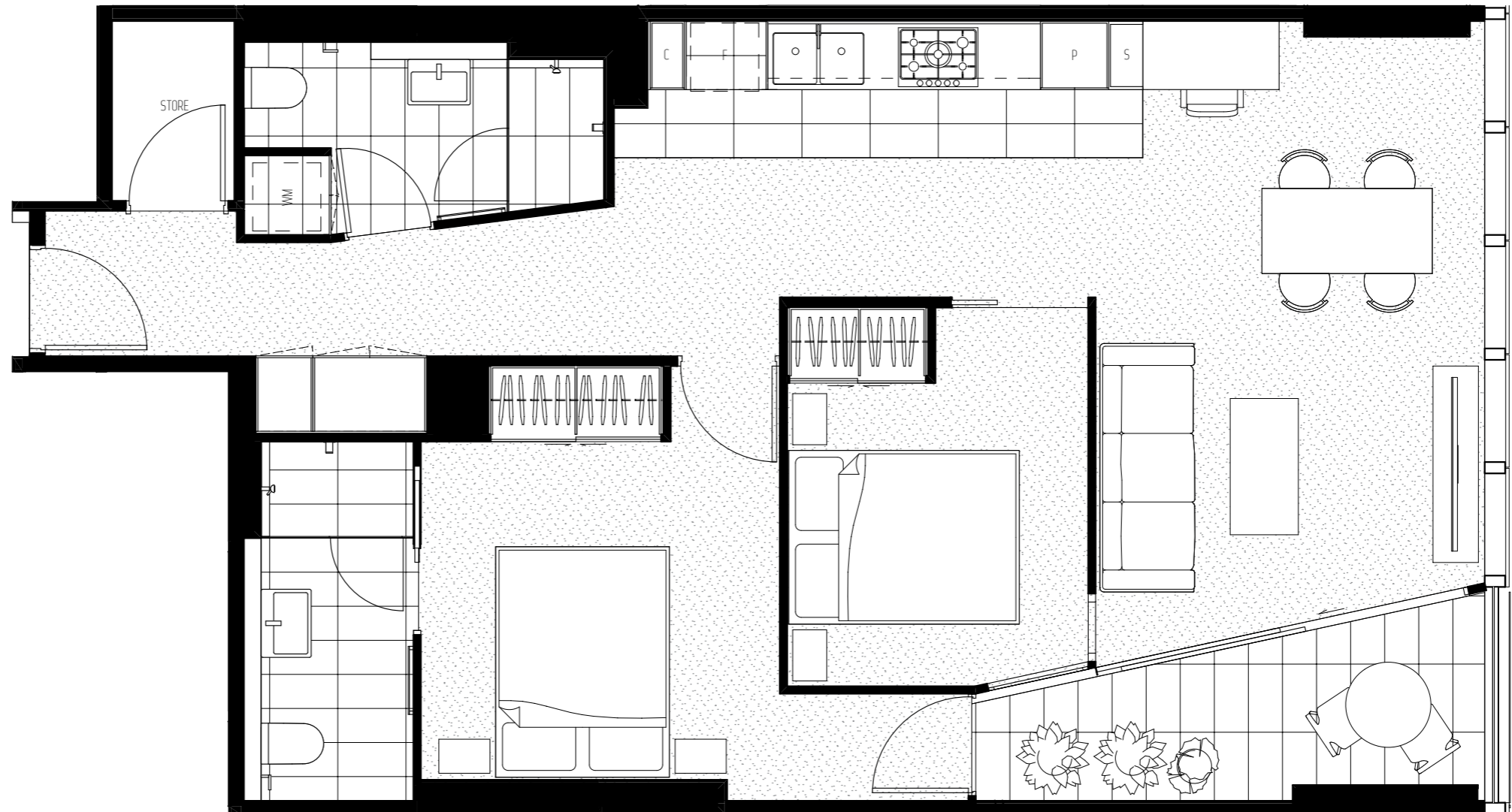


0m 0.5m 1m 2m

The information provided is illustrative only and may not be relied upon. In particular the final area dimensions of any apartment sold will be determined by the contract of sale and may differ from that depicted. Whilst every effort is made to provide accurate and complete information, the developer does not warrant or represent that the information in this floor plan is free from errors or omissions or is suitable for your intended use. Subject to any terms implied by law which cannot be excluded, the developer accepts no responsibility for any loss, damage, cost or expense (whether direct or indirect) by you as a result of any error, omission or misrepresentation in information. The area of the apartments has been measured to the boundaries of the floor and where a boundary comprises a wall or glass line, and includes any ducts. All dimensions are approximate. All information is subject to change without notice. Date of publication 30/07/13.

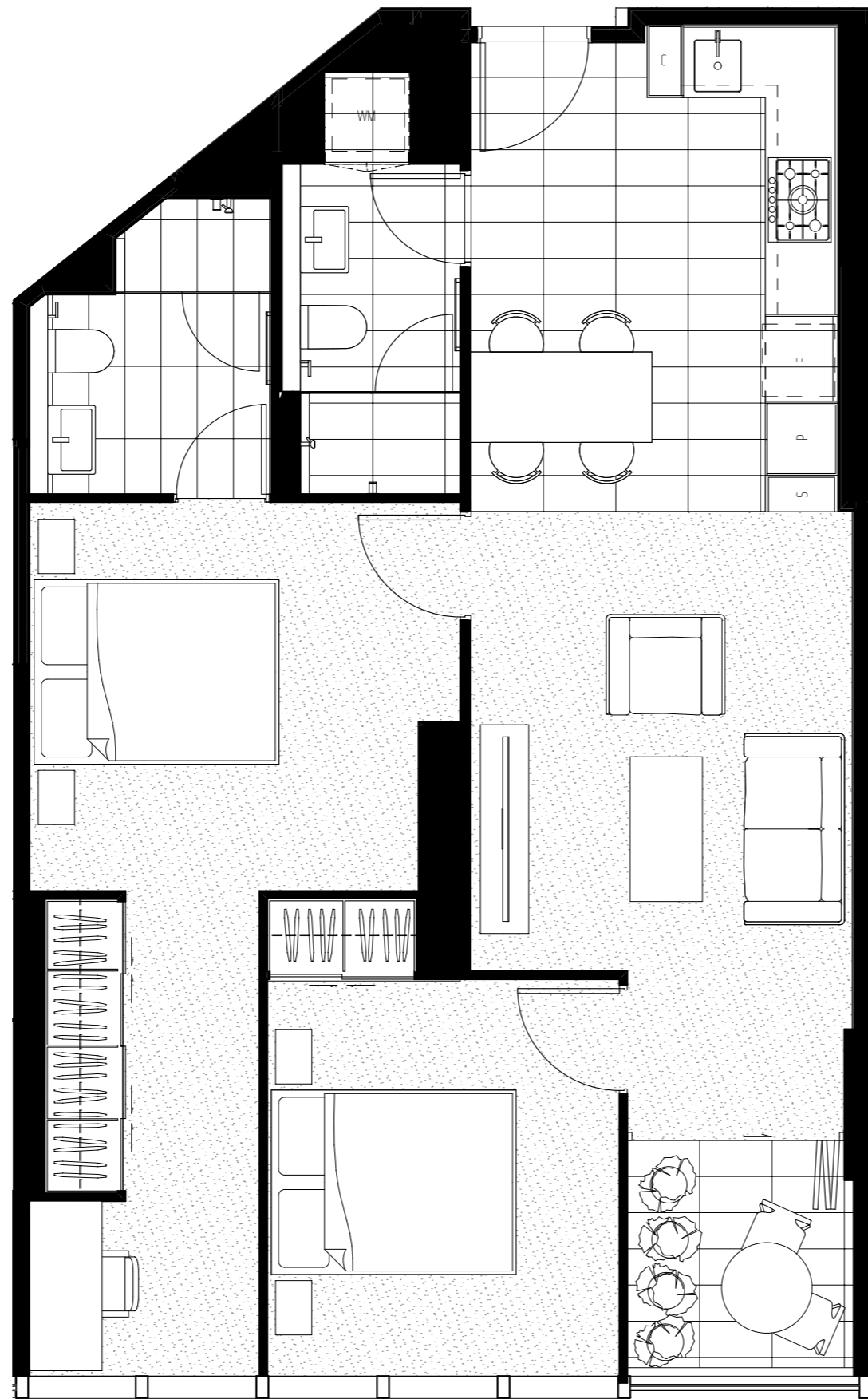


DIGITAL HARBOUR



THE ALTUS

2 BEDROOM + 2 BATHROOM



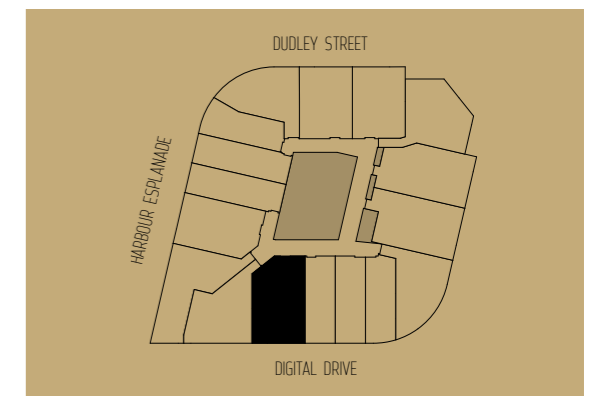
TYPE T10

APARTMENT NUMBER

18.13	27.13
19.13	28.13
20.13	29.13
21.13	30.13
22.13	31.13
23.13	32.13
24.13	33.13
25.13	34.13
26.13	

AREA

Internal	72.37 sqm
Winter garden	4.21 sqm
Total	76.58 sqm



0m 0.5m 1m 2m

The information provided is illustrative only and may not be relied upon. In particular the final area dimensions of any apartment sold will be determined by the contract of sale and may differ from that depicted. Whilst every effort is made to provide accurate and complete information, the developer does not warrant or represent that the information in this floor plan is free from errors or omissions or is suitable for your intended use. Subject to any terms implied by law which cannot be excluded, the developer accepts no responsibility for any loss, damage, cost or expense (whether direct or indirect) by you as a result of any error, omission or misrepresentation in information. The area of the apartments has been measured to the boundaries of the floor and where a boundary comprises a wall or glass line, and includes any ducts. All dimensions are approximate. All information is subject to change without notice. Date of publication 30/07/13.

THE ALTUS

2 BEDROOM + 2 BATHROOM

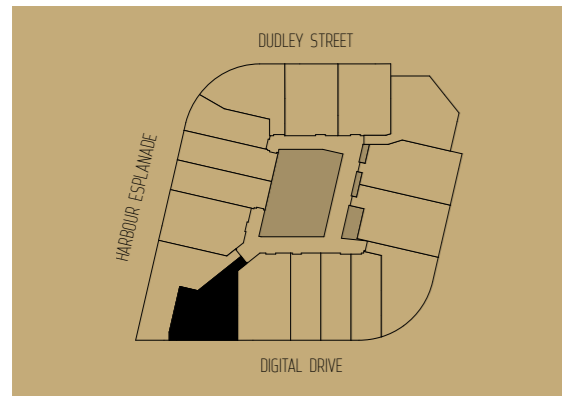
TYPE T11

APARTMENT NUMBER

18.14	27.14
19.14	28.14
20.14	29.14
21.14	30.14
22.14	31.14
23.14	32.14
24.14	33.14
25.14	34.14
26.14	

AREA

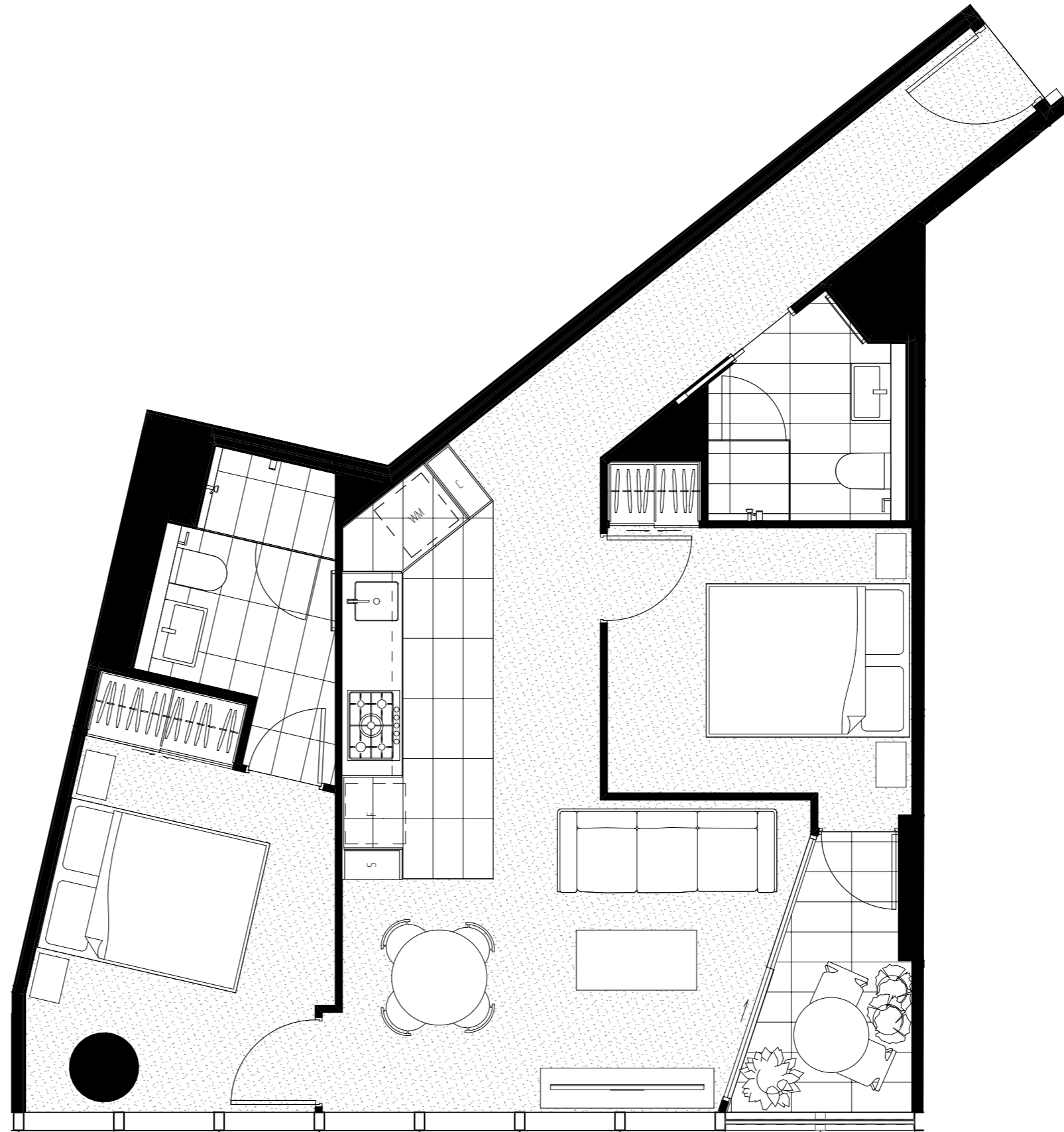
Internal	76.62 sqm
Winter garden	3.94 sqm
Total	80.56 sqm



The information provided is illustrative only and may not be relied upon. In particular the final area dimensions of any apartment sold will be determined by the contract of sale and may differ from that depicted. Whilst every effort is made to provide accurate and complete information, the developer does not warrant or represent that the information in this floor plan is free from errors or omissions or is suitable for your intended use. Subject to any terms implied by law which cannot be excluded, the developer accepts no responsibility for any loss, damage, cost or expense (whether direct or indirect) by you as a result of any error, omission or misrepresentation in information. The area of the apartments has been measured to the boundaries of the floor and where a boundary comprises a wall or glass line, and includes any ducts. All dimensions are approximate. All information is subject to change without notice. Date of publication 30/07/13.



DIGITAL HARBOUR



THE ALTUS

2 BEDROOM 2 BATHROOM + 1 STUDY NOOK

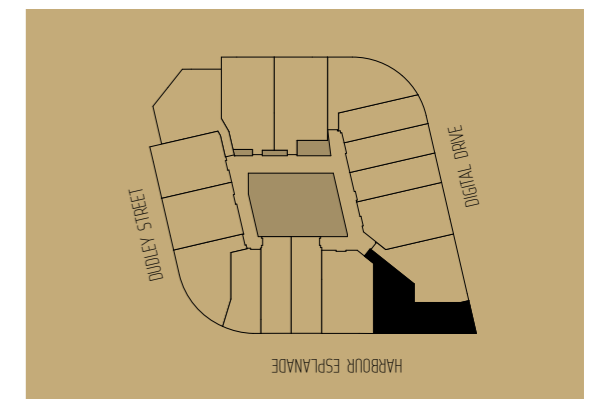
TYPE T12

APARTMENT NUMBER

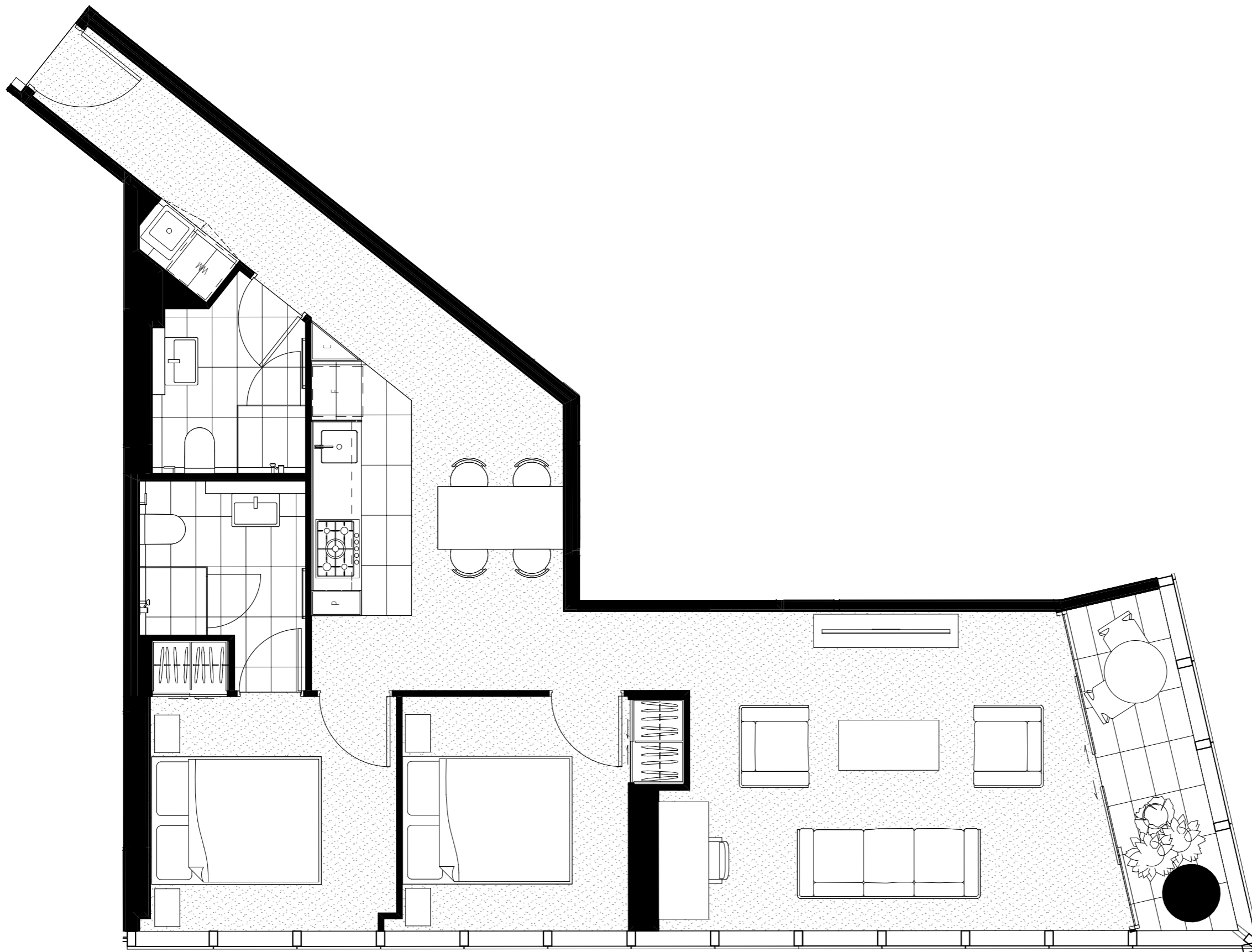
18.15	27.15
19.15	28.15
20.15	29.15
21.15	30.15
22.15	31.15
23.15	32.15
24.15	33.15
25.15	34.15
26.15	

AREA

Internal	72.79 sqm
Winter garden	6.1 sqm
Total	78.89 sqm



The information provided is illustrative only and may not be relied upon. In particular the final area dimensions of any apartment sold will be determined by the contract of sale and may differ from that depicted. Whilst every effort is made to provide accurate and complete information, the developer does not warrant or represent that the information in this floor plan is free from errors or omissions or is suitable for your intended use. Subject to any terms implied by law which cannot be excluded, the developer accepts no responsibility for any loss, damage, cost or expense (whether direct or indirect) by you as a result of any error, omission or misrepresentation in information. The area of the apartments has been measured to the boundaries of the floor and where a boundary comprises a wall or glass line, and includes any ducts. All dimensions are approximate. All information is subject to change without notice. Date of publication 30/07/13.



THE ALTUS

2 BEDROOM
2 BATHROOM + 1 STUDY NOOK

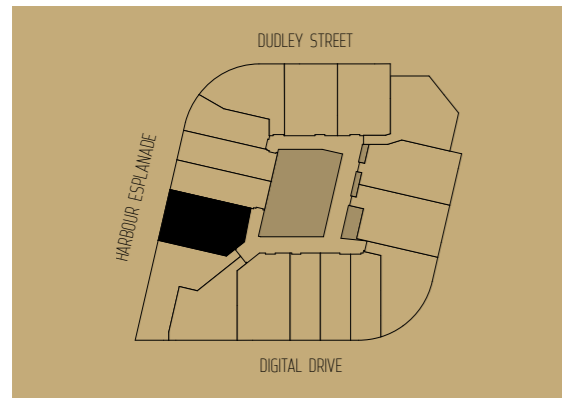
TYPE T13

APARTMENT NUMBER

18.16	27.16
19.16	28.16
20.16	29.16
21.16	30.16
22.16	31.16
23.16	32.16
24.16	33.16
25.16	34.16
26.16	

AREA

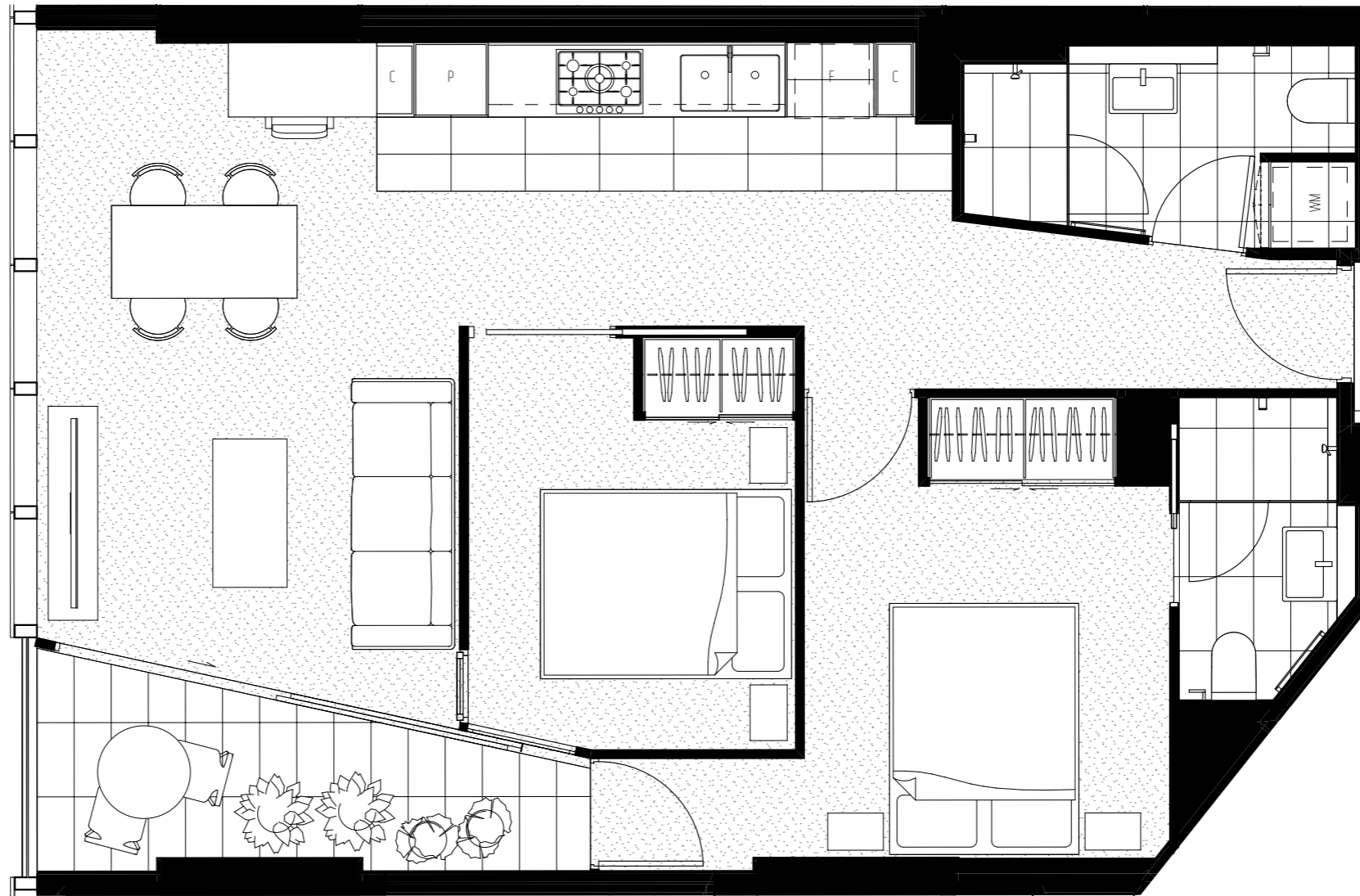
Internal	74.03 sqm
Winter garden	6.03 sqm
Total	80.06 sqm



The information provided is illustrative only and may not be relied upon. In particular the final area dimensions of any apartment sold will be determined by the contract of sale and may differ from that depicted. Whilst every effort is made to provide accurate and complete information, the developer does not warrant or represent that the information in this floor plan is free from errors or omissions or is suitable for your intended use. Subject to any terms implied by law which cannot be excluded, the developer accepts no responsibility for any loss, damage, cost or expense (whether direct or indirect) by you as a result of any error, omission or misrepresentation in information. The area of the apartments has been measured to the boundaries of the floor and where a boundary comprises a wall or glass line, and includes any ducts. All dimensions are approximate. All information is subject to change without notice. Date of publication 30/07/13.



DIGITAL HARBOUR



THE ALTUS

1 BEDROOM + 1 BATHROOM

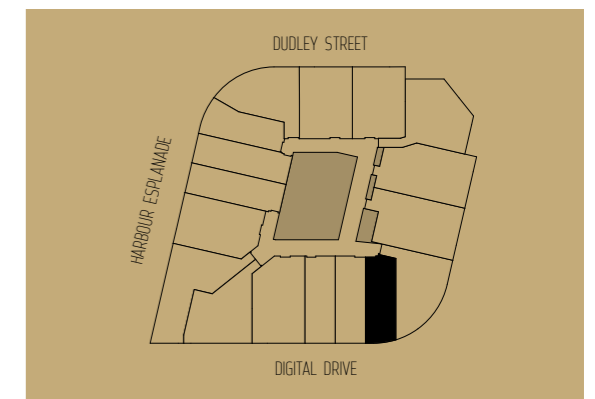
TYPE T14

APARTMENT NUMBER

18.10	27.10
19.10	28.10
20.10	29.10
21.10	30.10
22.10	31.10
23.10	32.10
24.10	33.10
25.10	34.10
26.10	

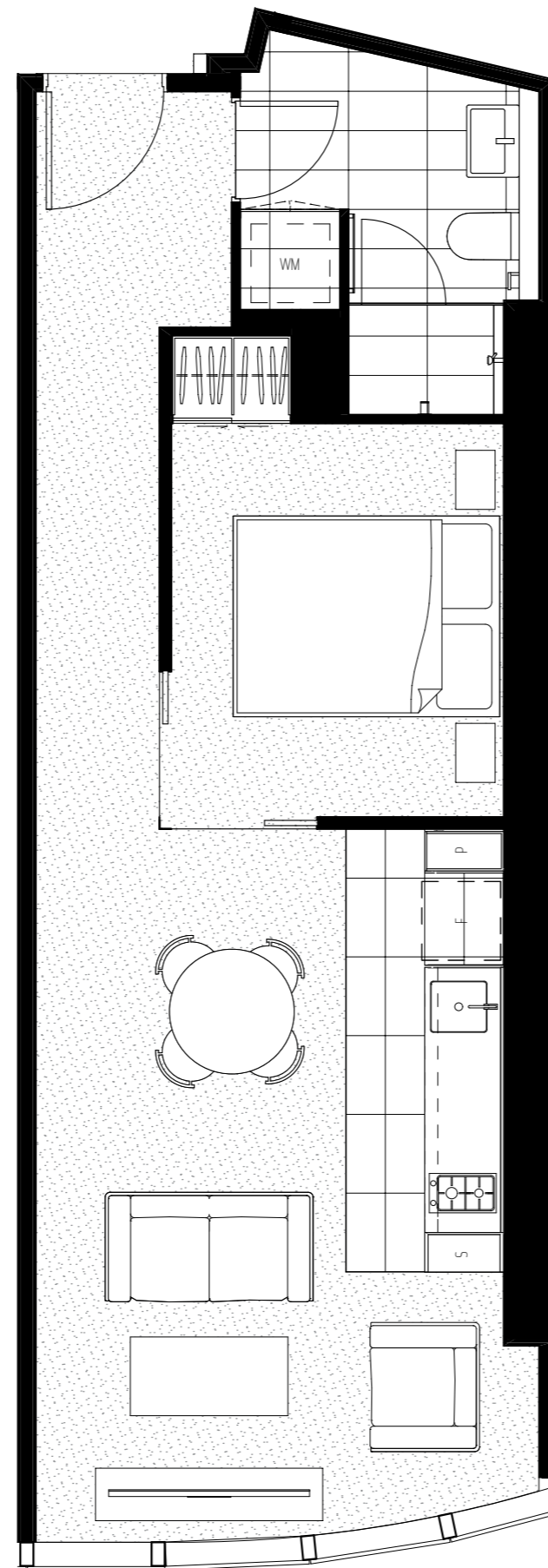
AREA

Internal	45.64 sqm
Winter garden	0 sqm
Total	45.64 sqm



0m 0.5m 1m 2m

The information provided is illustrative only and may not be relied upon. In particular the final area dimensions of any apartment sold will be determined by the contract of sale and may differ from that depicted. Whilst every effort is made to provide accurate and complete information, the developer does not warrant or represent that the information in this floor plan is free from errors or omissions or is suitable for your intended use. Subject to any terms implied by law which cannot be excluded, the developer accepts no responsibility for any loss, damage, cost or expense (whether direct or indirect) by you as a result of any error, omission or misrepresentation in information. The area of the apartments has been measured to the boundaries of the floor and where a boundary comprises a wall or glass line, and includes any ducts. All dimensions are approximate. All information is subject to change without notice. Date of publication 30/07/13.



MIMA
Moull Murray Architects

DIGITAL HARBOUR

THEALTUS.COM.AU

THE ALTUS

1 BEDROOM + 1 BATHROOM

TYPE T15

APARTMENT NUMBER

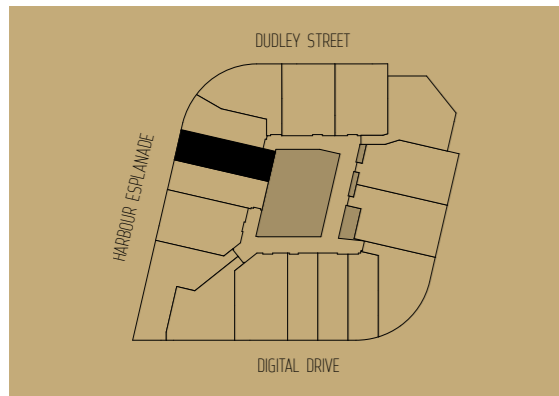
18.01

AREA

Internal 50.04 sqm

Winter garden 0 sqm

Total 50.04 sqm



0m 0.5m 1m 2m

The information provided is illustrative only and may not be relied upon. In particular the final area dimensions of any apartment sold will be determined by the contract of sale and may differ from that depicted. Whilst every effort is made to provide accurate and complete information, the developer does not warrant or represent that the information in this floor plan is free from errors or omissions or is suitable for your intended use. Subject to any terms implied by law which cannot be excluded, the developer accepts no responsibility for any loss, damage, cost or expense (whether direct or indirect) by you as a result of any error, omission or misrepresentation in information. The area of the apartments has been measured to the boundaries of the floor and where a boundary comprises a wall or glass line, and includes any ducts. All dimensions are approximate. All information is subject to change without notice. Date of publication 30/07/13.

MMA
Moull Murray Architects



DIGITAL HARBOUR

THEALTUS.COM.AU

