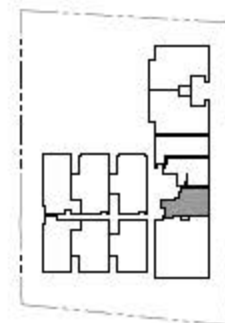
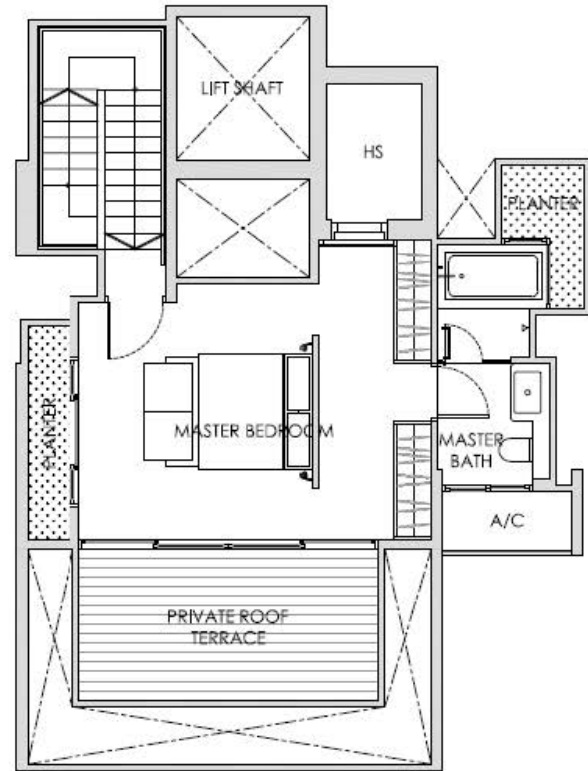
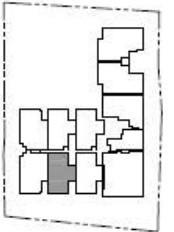


## UNIT A 1

#02-05, #05-05 to #09-05 ( 56 sq.m / 603 sq.ft )





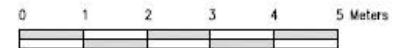
## UNIT B5 - 01

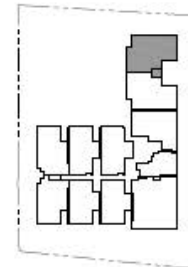
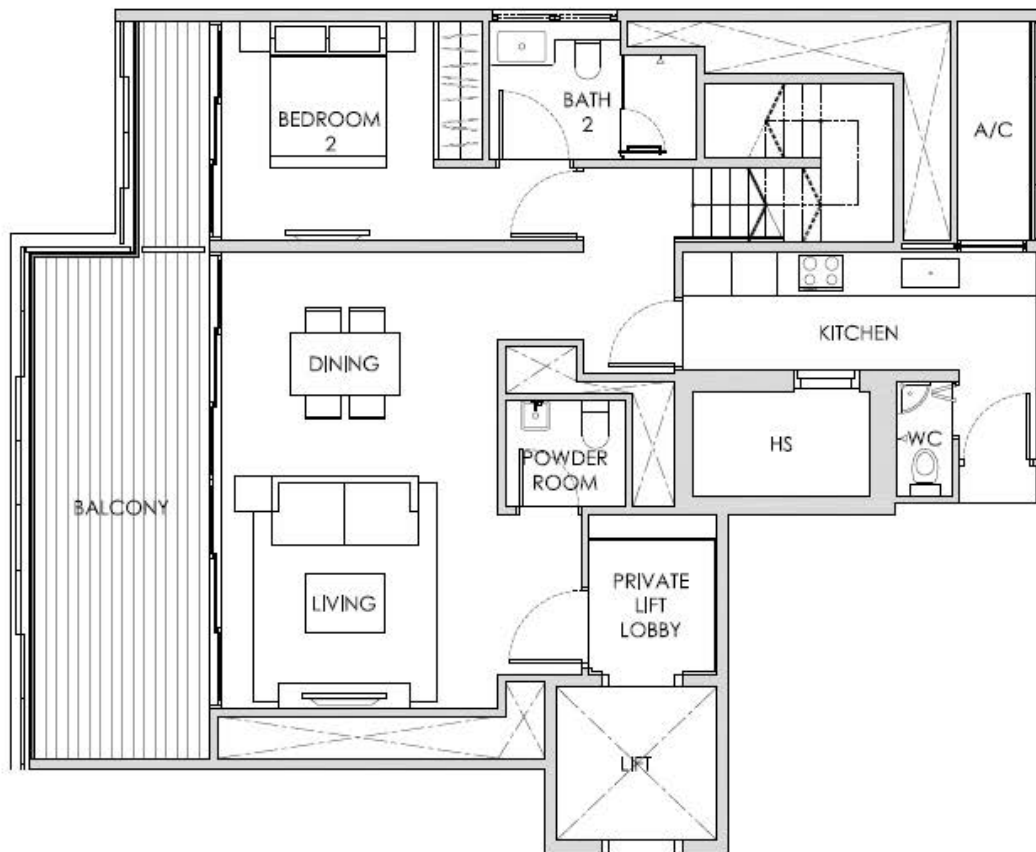
#10-08 ( 149 sq.m / 1604 sq.ft)

**DISCLAIMER :**

The plans are for general guidance only and subject to changes as may be approved by the relevant authority.  
The floor plans are approximate measurements and subject to final survey.

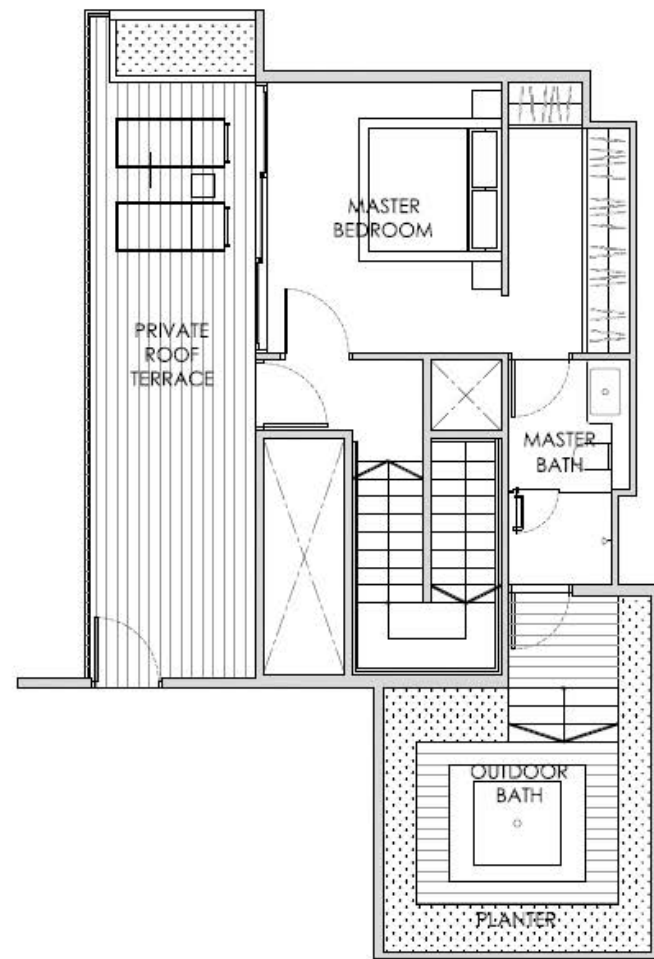
Building Plan no. : A1002-00003-2011-BP01 approved on 30 April 2012.





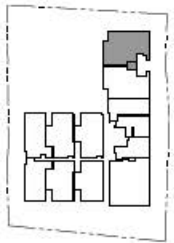
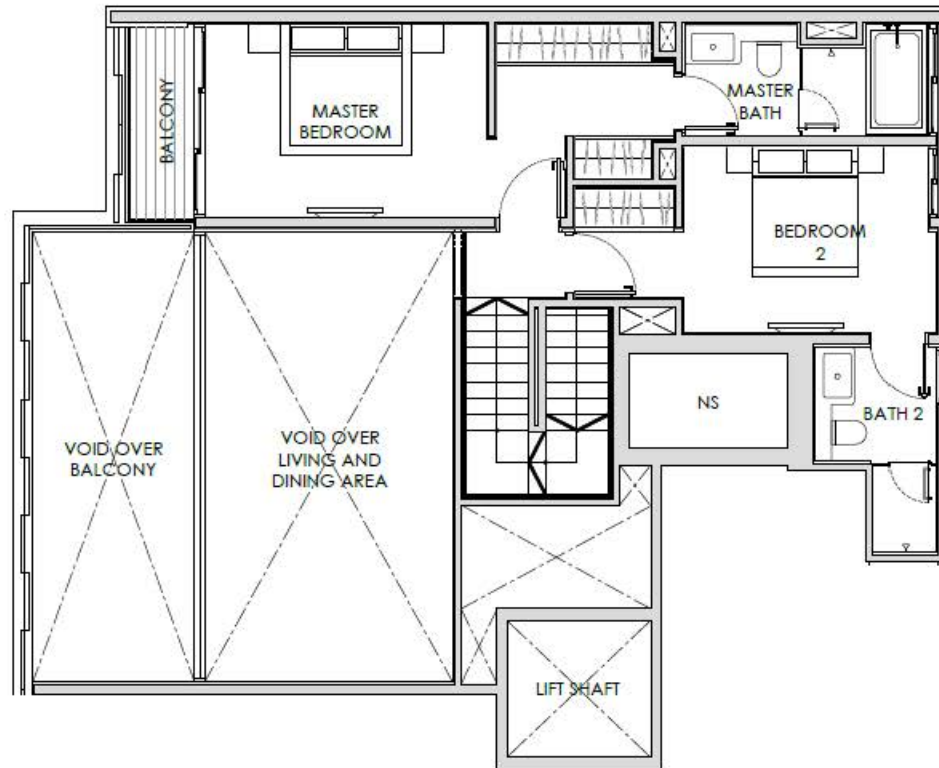
**UNIT B7 - 01**  
**LOWER FLOOR PLAN**

#10-01 ( 108 sq.m / 1162 sq.ft)



## UNIT B 8

#10-03 ( 184 sa.m / 1981 sq.ft)



UPPER PLAN

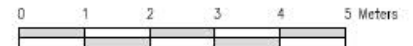
## UNIT C1 - 01 UPPER FLOOR PLAN

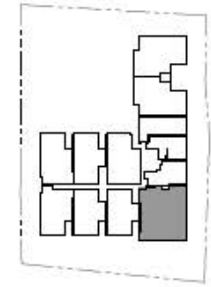
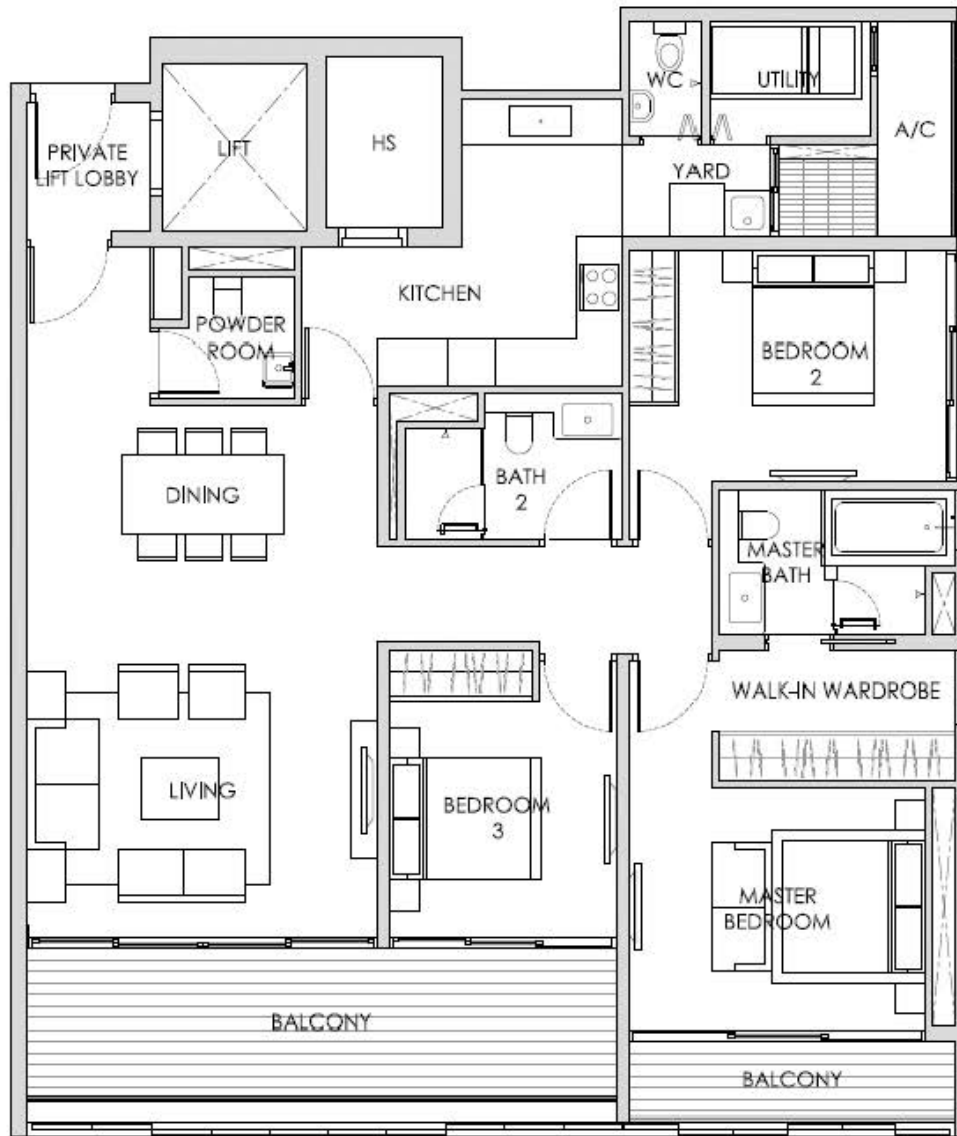
#02-01 TO #08-01 (110 sq.m / 1184 sq.ft)

**DISCLAIMER :**

The plans are for general guidance only and subject to changes as may be approved by the relevant authority.  
The floor plans are approximate measurements and subject to final survey.

Building Plan no. : A1002-00003-2011-BP01 approved on 30 April 2012

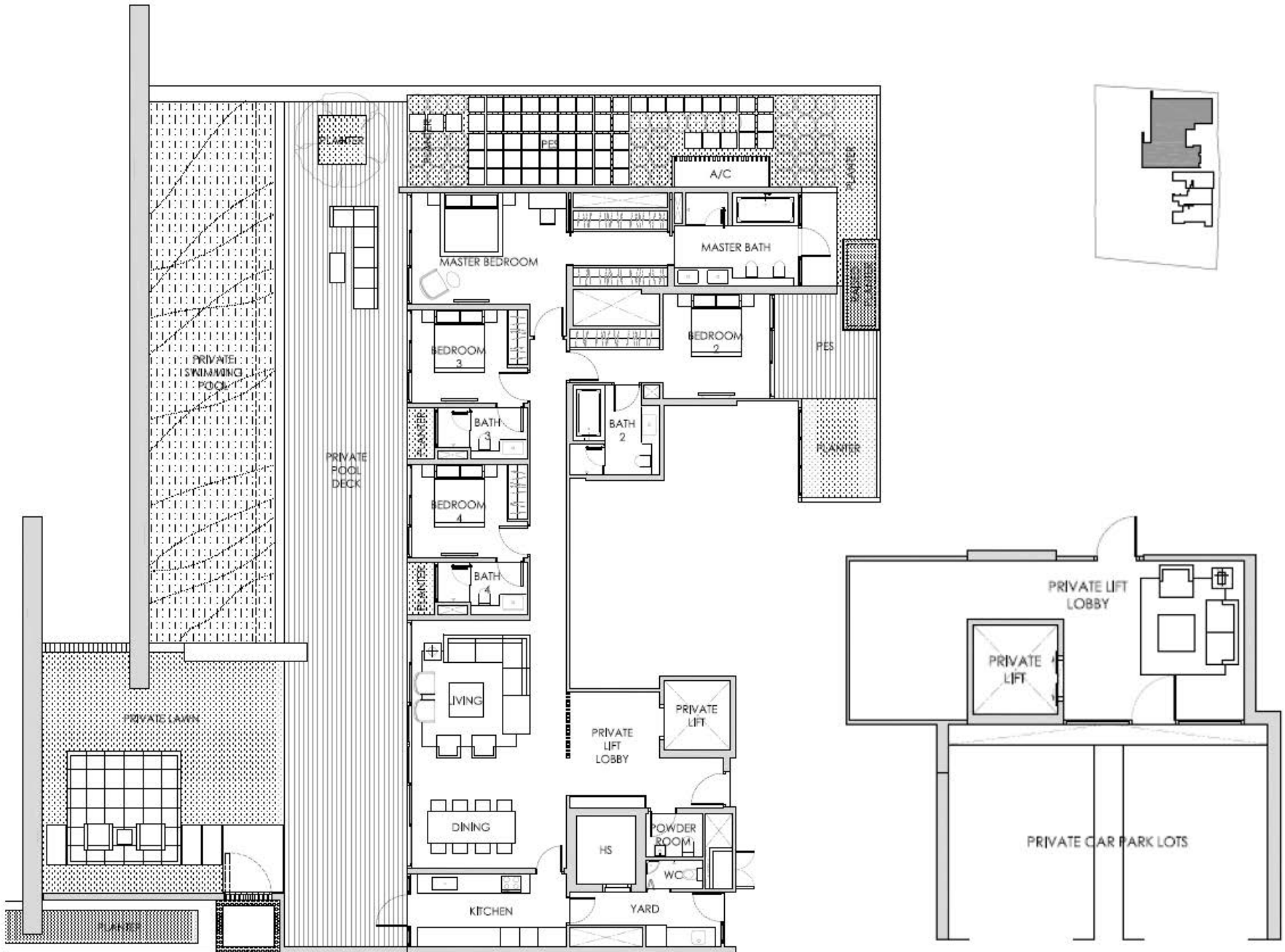




LOWER PLAN

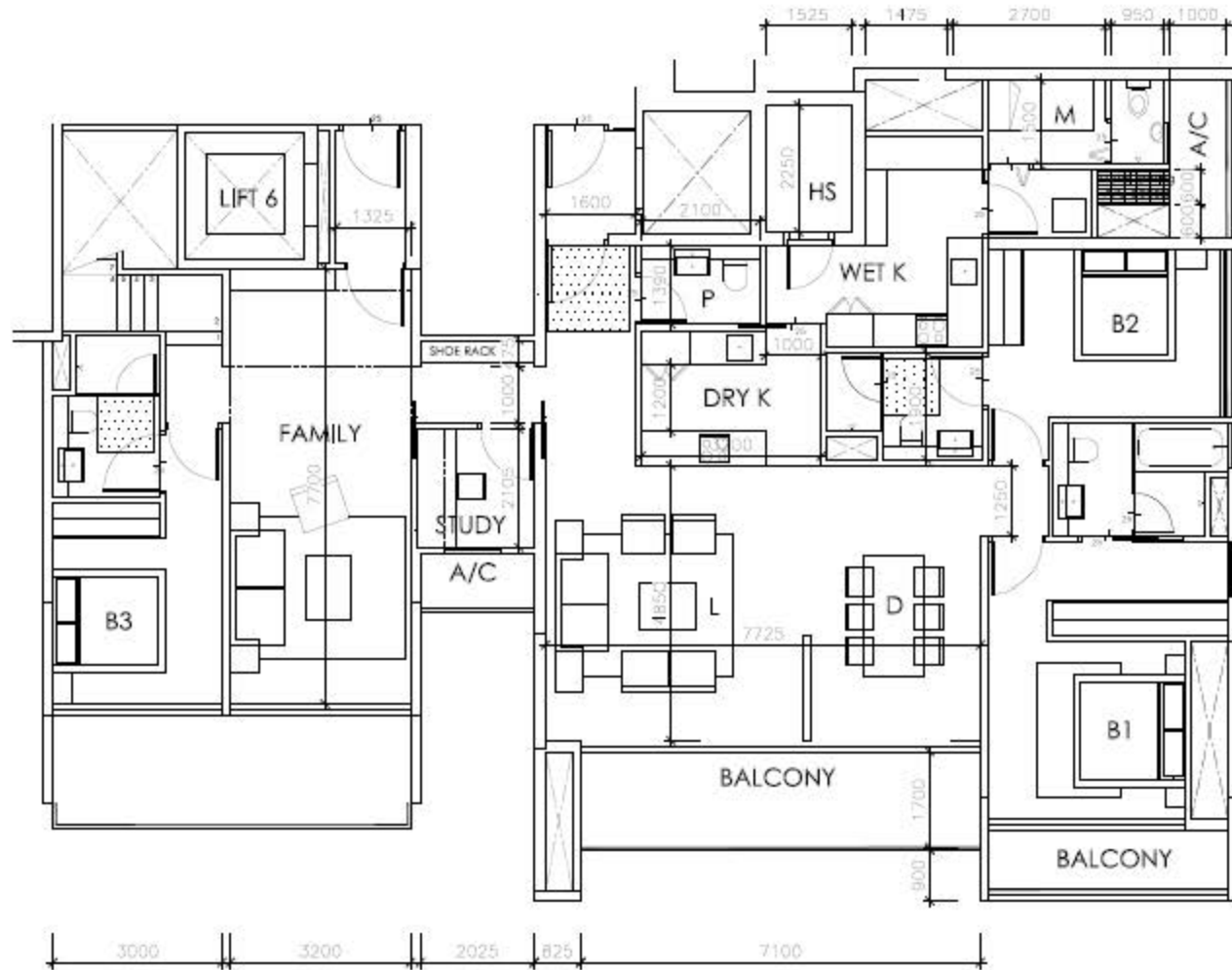
# UNIT C2

#02-06 TO #08-06 (161 sq.m / 1733 sq.ft)



## UNIT D1

#01-01 (615 sq.m / 6620 sq.ft, including PES/Planter/Lawn Deck/Swimming Pool 320 sq.m / 3444 sq. ft )



**LOWER  
UNIT COMBINE B3-01+C2**