



# 1-Bedroom Apartment

## TYPE A

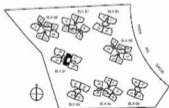
47 sqm / 506 sqft

BLK 91: #02-27\* to #14-27\*

46 sqm / 495 sqft

BLK 91: #02-30 to #14-30

\*Refer Image



Areas are subject to final survey.

Floor plans are subject to change without prior notice.

## 2-Bedroom Apartment

### TYPE B1a

69 sqm / 743 sqft

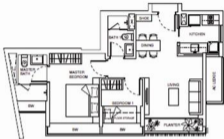
BLK 03: #02-05 to #03-05, #05-05 to #06-05,  
#08-05 to #09-05, #11-05 to #12-05,  
#14-05 to #15-05

BLK 07: #02-13 to #03-13, #05-13 to #06-13,  
#08-13 to #09-13, #11-13 to #12-13,  
#14-13 to #15-13

BLK 09: #02-23 to #03-23, #05-23 to #06-23,  
#08-23 to #09-23, #11-23 to #12-23,  
#14-23 to #15-23

BLK 95: #04-37\* to #05-37\*, #07-37\* to #08-37\*,  
#10-37\* to #11-37\*, #13-37\* to #14-37\*

\*mirror image



BLK 03: #04-05, #07-05, #10-05, #13-05  
BLK 07: #04-13, #07-13, #10-13, #13-13  
BLK 09: #04-23, #07-23, #10-23, #13-23  
BLK 95: #03-37\*, #06-37\*, #09-37\*, #12-37\*



Areas are subject to final survey.

Floor plans are subject to change without prior notice.



# 3-Bedroom Apartment

## TYPE C1a

101 sqm / 1,087 sqft

BLK 87: #02-18,

#04-18 to #05-18,

#07-18 to #08-18,

#10-18 to #11-18,

#13-18 to #14-18

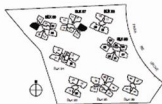
BLK 89: #02-21,

#04-21 to #05-21,

#07-21 to #08-21,

#10-21 to #11-21,

#13-21 to #14-21



BLK 87: #03-18, #06-18,  
#09-18, #12-18,  
#15-18

BLK 89: #03-21, #06-21,  
#09-21, #12-21,  
#15-21

Areas are subject to final survey.

Floor plans are subject to change without prior notice.

# 3-Bedroom + Study

## TYPE C2a

110 sqm / 1,184 sqft

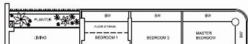
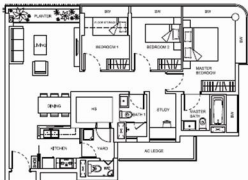
BLK 83: #02-03, #04-03 to #05-03, #07-03 to #08-03,  
#10-03 to #11-03, #13-03 to #14-03,  
#02-07<sup>8</sup>, #04-07<sup>8</sup> to #05-07<sup>8</sup>,  
#07-07<sup>8</sup> to #08-07<sup>8</sup>,  
#10-07<sup>8</sup> to #11-07<sup>8</sup>,  
#13-07<sup>8</sup> to #14-07<sup>8</sup>

BLK 87: #02-15<sup>8</sup>, #04-15<sup>8</sup>, #05-15<sup>8</sup>,  
#07-15<sup>8</sup>, #08-15<sup>8</sup>, #10-15<sup>8</sup>,  
#11-15<sup>8</sup>, #13-15<sup>8</sup>, #14-15<sup>8</sup>

BLK 89: #02-25<sup>8</sup>, #04-25<sup>8</sup>, #05-25<sup>8</sup>,  
#07-25<sup>8</sup>, #08-25<sup>8</sup>, #10-25<sup>8</sup>,  
#11-25<sup>8</sup>, #13-25<sup>8</sup>, #14-25<sup>8</sup>

BLK 95: #03-39<sup>8</sup> to #04-39<sup>8</sup>, #06-39<sup>8</sup> to #07-39<sup>8</sup>,  
#09-39<sup>8</sup> to #10-39<sup>8</sup>, #12-39<sup>8</sup> to #13-39<sup>8</sup>,  
#03-42 to #04-42, #06-42 to #07-42,  
#09-42 to #10-42, #12-42 to #13-42

Redox Image

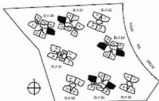


BLK 83: #03-03, #06-03, #09-03, #12-03,  
#15-03, #03-07<sup>8</sup>, #06-07<sup>8</sup>,  
#09-07<sup>8</sup>, #12-07<sup>8</sup>, #15-07<sup>8</sup>

BLK 89: #03-25<sup>8</sup>, #06-25<sup>8</sup>,  
#09-25<sup>8</sup>, #12-25<sup>8</sup>, #15-25<sup>8</sup>

BLK 87: #03-15<sup>8</sup>, #06-15<sup>8</sup>, #09-15<sup>8</sup>,  
#12-15<sup>8</sup>, #15-15<sup>8</sup>

BLK 95: #03-39<sup>8</sup>, #05-39<sup>8</sup>, #08-39<sup>8</sup>,  
#11-39<sup>8</sup>, #14-39<sup>8</sup>,  
#03-42, #05-42, #08-42,  
#11-42, #14-42



Areas are subject to final survey.

Floor plans are subject to change without prior notice.

# 4-Bedroom Apartment

## TYPE D

135 sqm / 1,453 sqft

BLK 85: #02-09 to #03-09,

#05-09 to #06-09,

#08-09 to #09-09,

#11-09 to #12-09

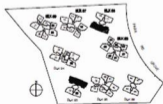
BLK 93: #02-35,

#04-35 to #05-35,

#07-35 to #08-35,

#10-35 to #11-35,

\*mirror image



BLK 85: #02-08<sup>a</sup> to #03-08<sup>a</sup>,  
#05-08<sup>a</sup> to #06-08<sup>a</sup>,  
#08-08<sup>a</sup> to #09-08<sup>a</sup>,  
#11-08<sup>a</sup> to #12-08<sup>a</sup>

BLK 93: #02-34<sup>a</sup>,  
#04-34<sup>a</sup> to #05-34<sup>a</sup>,  
#07-34<sup>a</sup> to #08-34<sup>a</sup>,  
#10-34<sup>a</sup> to #11-34<sup>a</sup>

Areas are subject to final survey.

Floor plans are subject to change without prior notice.

# Penthouse

## TYPE E1

232 sqm / 2,497 sqft

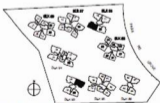
BLK 85: #14-09

BLK 93: #13-35

Lower Level



Upper Level



Areas are subject to final survey.  
Floor plans are subject to change without prior notice.