

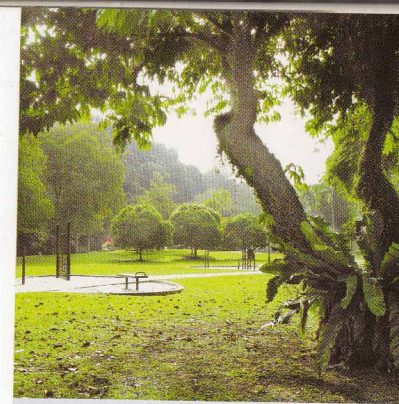


Grand Duchess
✧ AT ST PATRICK'S ✧

“Ideal educational institutions such as Tao Nan School, CHIJ Katong Convent, St. Patrick’s Secondary School, Victoria School and Victoria Junior College.”

Be greeted by an aroma of delectable delights as you step out of your home to some of the top ranked eateries in the country. Take a break from the food fiesta and satisfy your hunger for shopping at the bustling Parkway Parade Shopping Centre or the neighbouring Katong Mall, Roxy Square and Siglap Centre.

Parents will love the convenience of a sound education right at your doorstep with ideal educational institutions such as Tao Nan School, CHIJ Katong Convent, St. Patrick’s Secondary School, Victoria School and Victoria Junior College. For an absolute treat on the weekends, take the kids down to East Coast Park for some beachside fun!

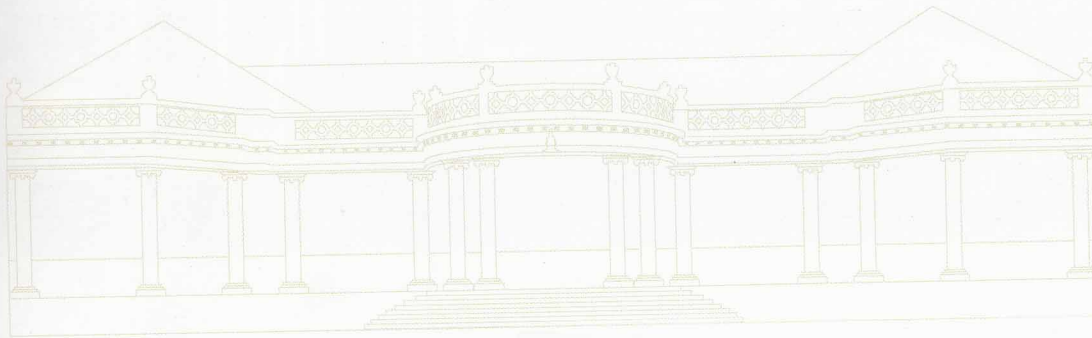




Artist's Impression

In the early days, the sprawling grounds were home to two grand bungalows. Previously situated beside the sea, they were once villas of the affluent, a holiday retreat for leisure. It was only after the land reclamation efforts in the late 1960s that they were situated further inshore.

Their mesmerizing charm and beauty remain just as captivating now, as they were then. Today, Grand Duchess effortlessly infuses the past and present, forming a rich fusion of heritage and modernity.



Artist's Impression



Artist's Impression



Artist's Impression



Artist's Impression

“A beautiful blend of Straits Chinese architecture along with British Colonial styled influences”



Inside Grand Duchess, be captivated by a beautiful blend of Straits Chinese architecture with British Colonial styled influences, immaculately complimented by five modern contemporary buildings, with a mix of luxurious apartments, duplexes and penthouses.



Artist's Impression



Artist's Impression



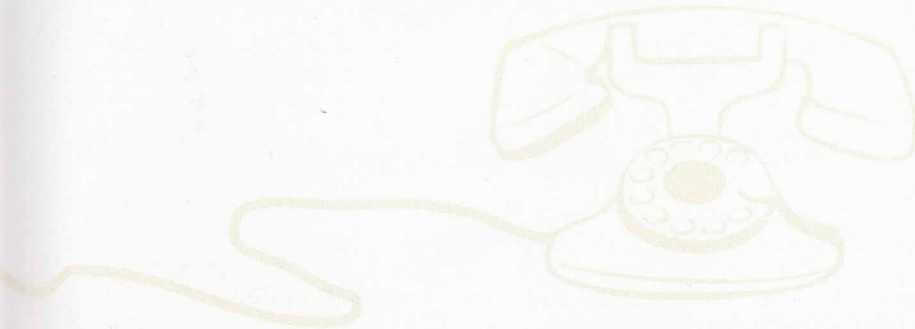
Artist's Impression

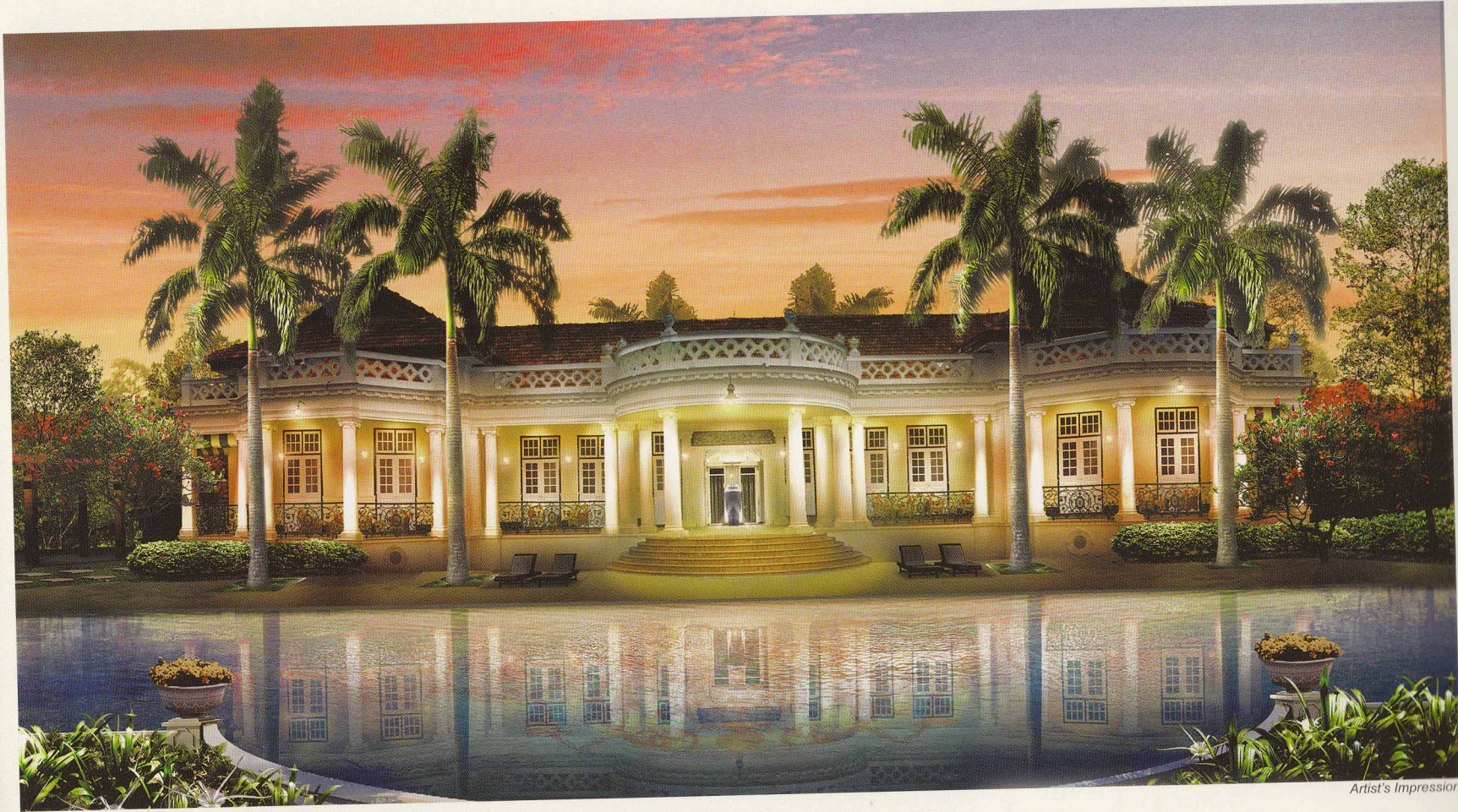


Artist's Impression

Featuring only the finest fittings and finishings, carefully handpicked and designed to blend into the rich cultural feel of your entire home.

Luxurious living is not nearly as lavish when constricted by space. With meticulous interior planning and design, much emphasis has been placed on ensuring that your home never leaves you feeling confined.





Artist's Impression

Enjoy hosting lavish parties in the distinct centre of attraction of Grand Duchess, a structure filled with a rich heritage of finest opulence - The Majestic Clubhouse. Be entertained by a game of chess on the outdoor giant chess set! Perhaps you'd prefer a healthy evening at the gym followed by a swim in the pool, a dip only fit for royalty.



Artist's Impression

If none of those tickle your fancy, lose all your worries with a rejuvenating spa experience. Indulge in a Grand Duchess tribute to those who appreciate the royal art of relaxation. Take your pick from a selection of the theatre lounge, games or reading rooms and just laze the evening away.



Artist's Impression



Artist's Impression



Artist's Impression

Legend

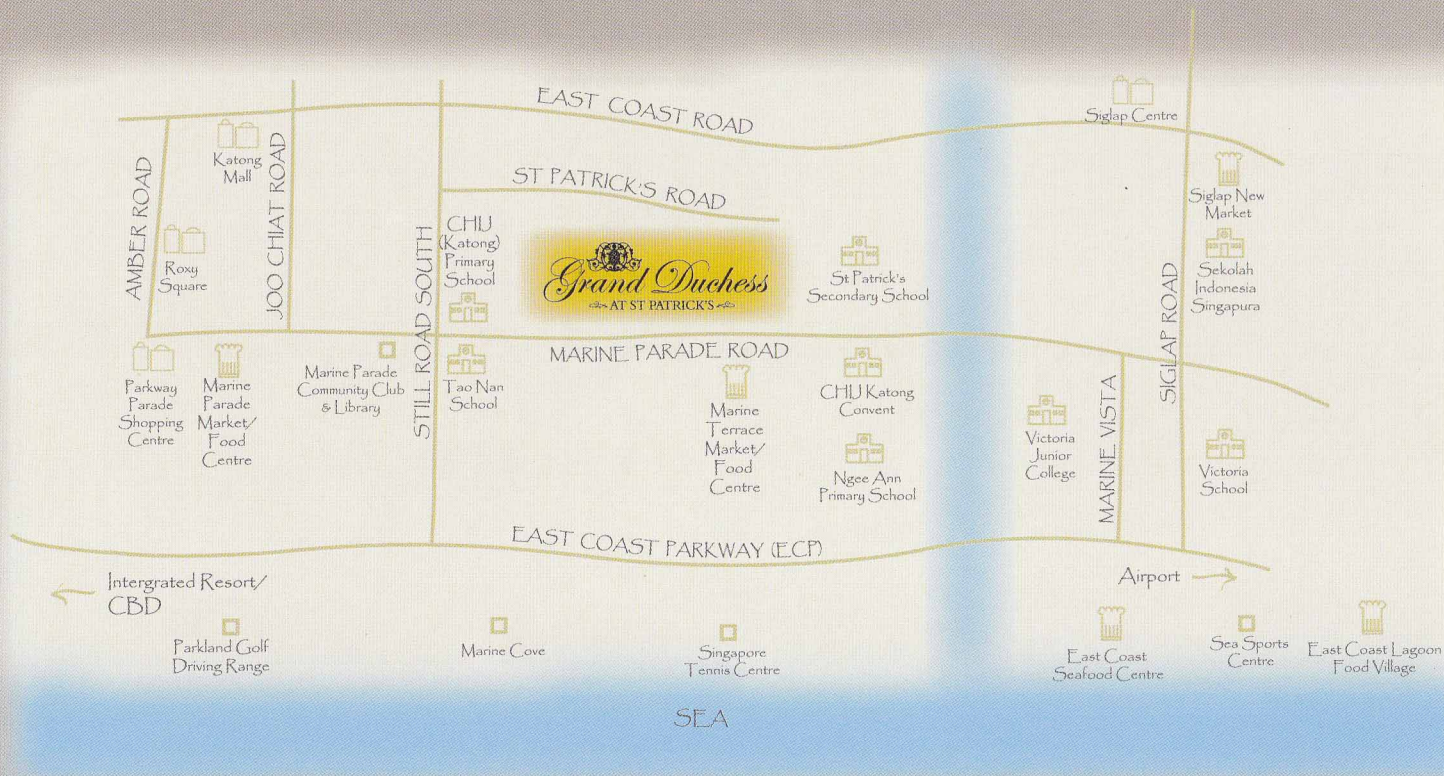


- 1 Entrance Plaza / Drop-off Plaza
- 2 Feature Waterwall
- 3 Linear Water Feature
- 4 Reflecting Pond
- 5 Pavillions
- 6 Outdoor Function Lawn
- 7 Chess Garden
- 8 Trellis
- 9 Children's Wet Play Area
- 10 Children's Pool
- 11 Jacuzzi Pool
- 12 Swimming Pool / Lap Pool
- 13 Water Cascade

- 14 Pool Deck
- 15 Stone Platform
- 16 Feature Wall / Water Wall
- 17 Fitness Station
- 18 Focal Water Feature
- 19 Side Gate

Clubhouse

- i) Lounge / Multi-Purpose Function Room
- ii) Gymnasium
- iii) Spa & Treatment Rooms
- iv) Reading Room
- v) Theatre Lounge
- vi) Games Room
- vii) Male and Female Changing Rooms
- viii) Management Office

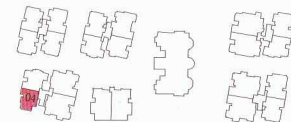
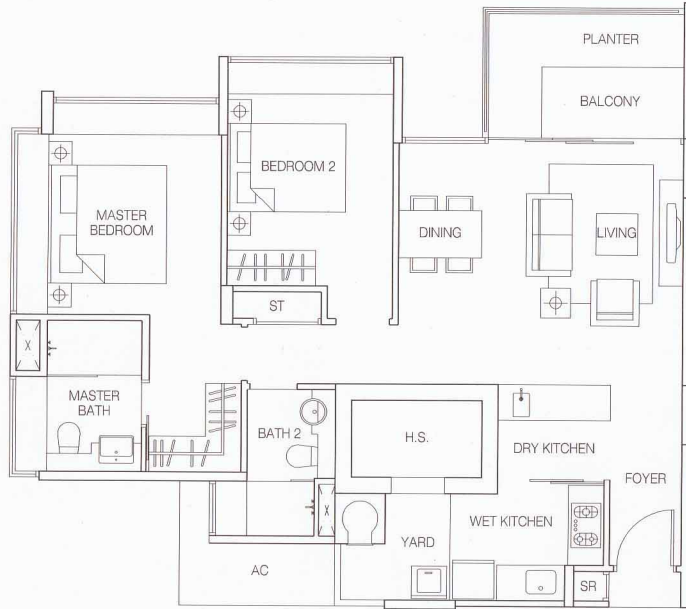


Site Plan



Type A1

97 sq m / 1044 sq ft
2-Bedroom Apartment
Block 128 - #02-04 to #04-04



128

MARINE PARADE ROAD



Type B1

129 sq m /1389 sq ft

3-Bedroom Apartment

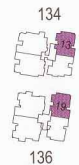
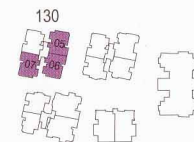
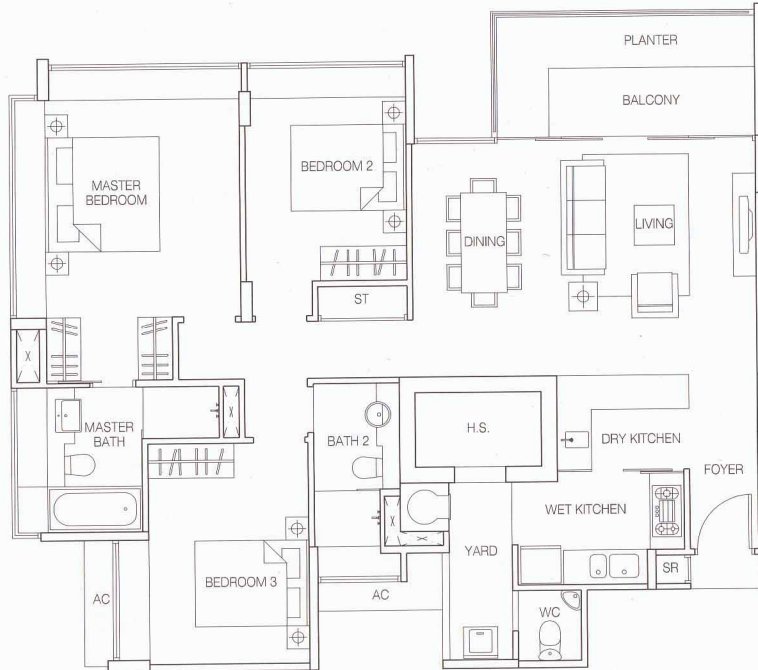
Block 130 -#02-05 to #04-05

#02-06 to #04-06

#02-07 to #04-07

Block 134 -#02-13 to #07-13

Block 136 -#02-19 to #04-19



MARINE PARADE ROAD



The above plans are subject to change as may be approved by the relevant authority. Areas are approximate measurements and subject to final survey. Plans are not to scale.

Type B2

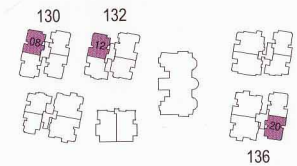
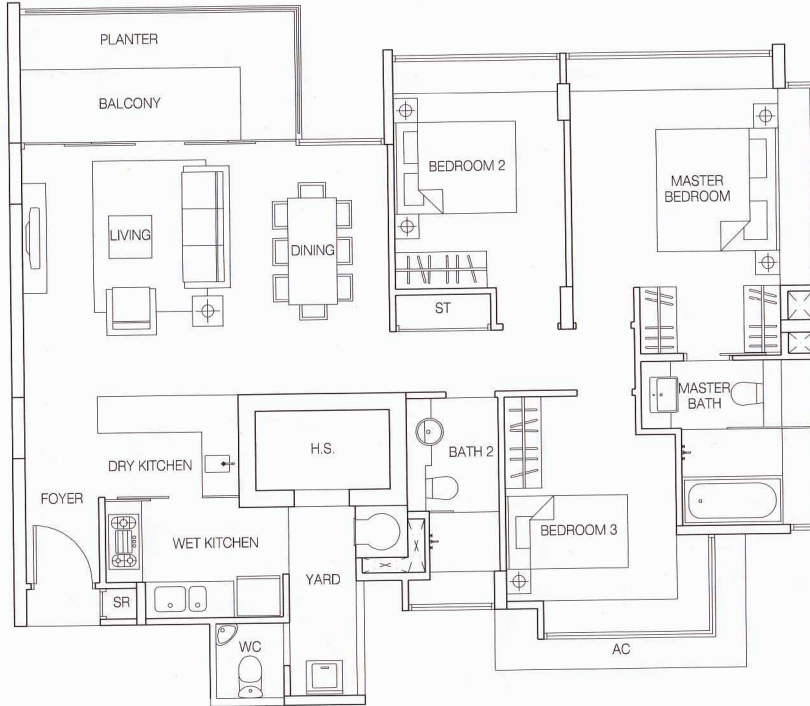
126 sq m/1356 sq ft

3-Bedroom Apartment

Block 130 - #02-08 to #04-08

Block 132 - #02-12 to #07-12

Block 136 - #02-20 to #04-20



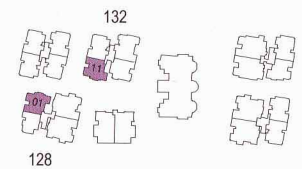
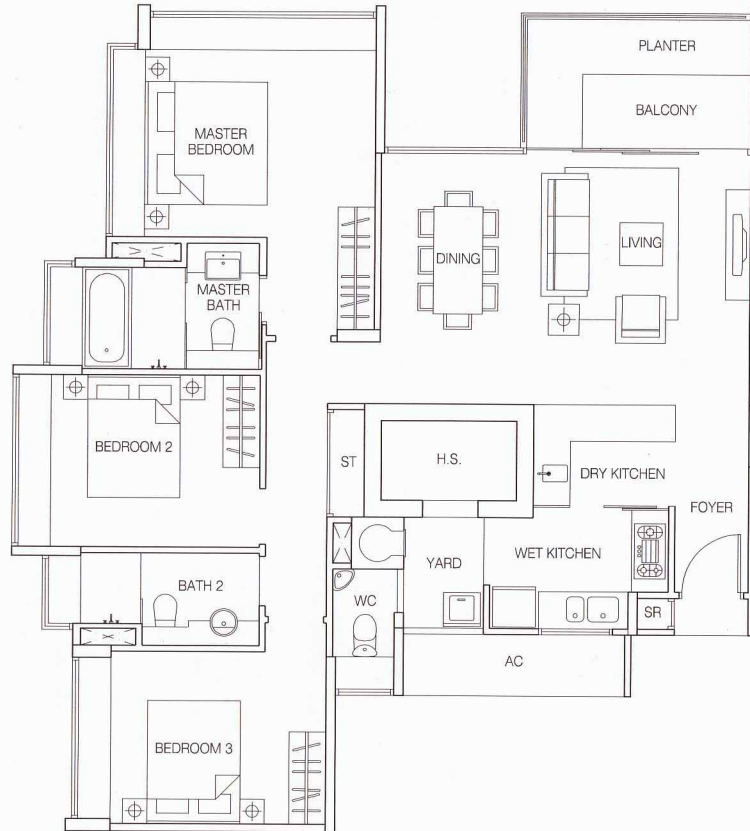
MARINE PARADE ROAD



The above plans are subject to change as may be approved by the relevant authority. Areas are approximate measurements and subject to final survey. Plans are not to scale.

Type B3

126 sq m/1356 sq ft
3-Bedroom Apartment
Block 128 - #02-01 to #04-01
Block 132 - #02-11 to #07-11

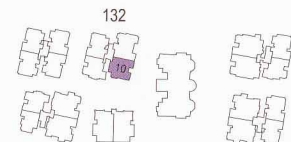
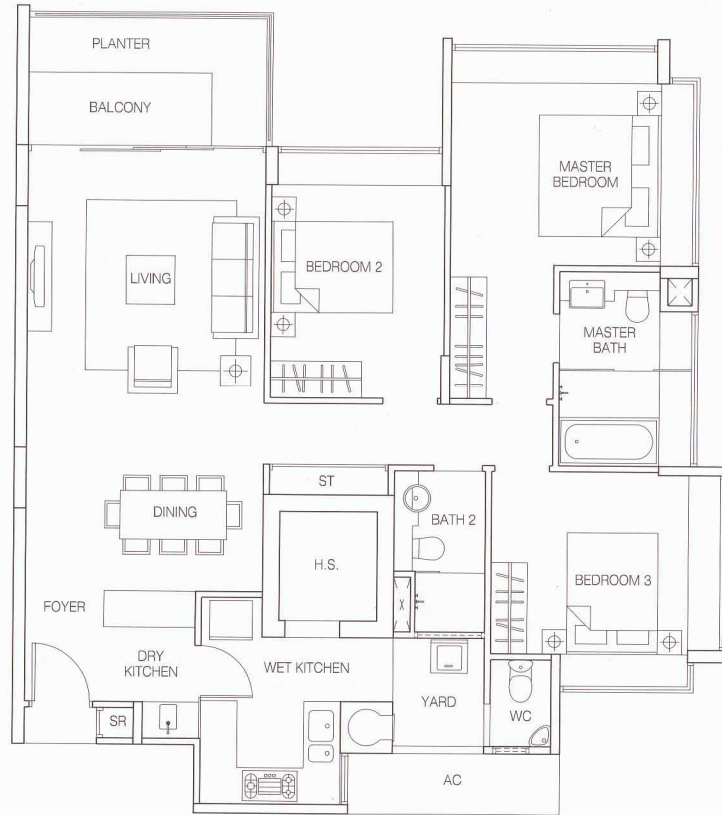


The above plans are subject to change as may be approved by the relevant authority. Areas are approximate measurements and subject to final survey. Plans are not to scale.

MARINE PARADE ROAD
N

Type B4

131 sq m/1410 sq ft
3-Bedroom Apartment
Block 132 - #02-10 to #07-10

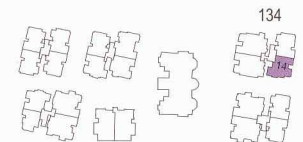
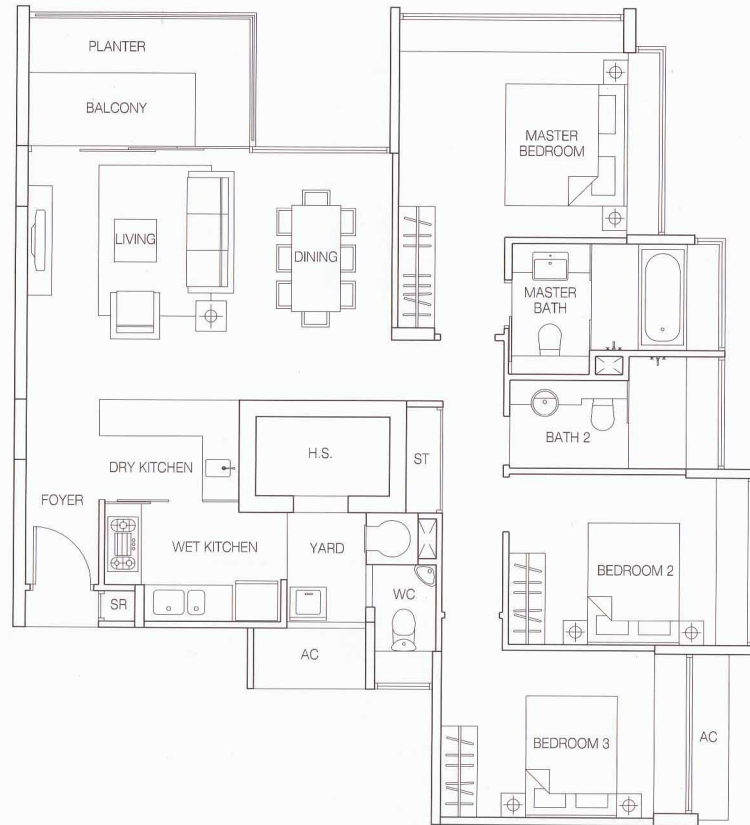


The above plans are subject to change as may be approved by the relevant authority. Areas are approximate measurements and subject to final survey. Plans are not to scale.



Type B5

128 sq m/ 1378 sq ft
3-Bedroom Apartment
Block 134 - #02-14 to #07-14



134

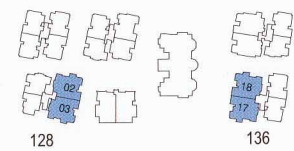
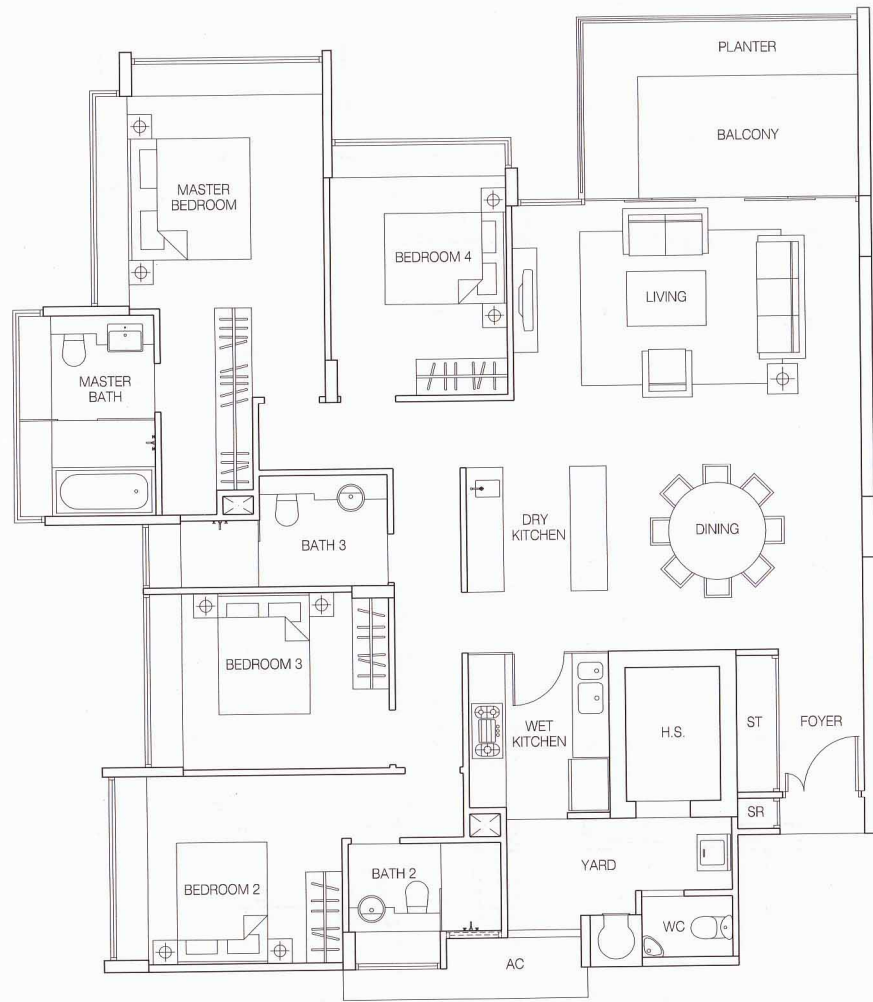
MARINE PARADE ROAD



The above plans are subject to change as may be approved by the relevant authority. Areas are approximate measurements and subject to final survey. Plans are not to scale.

Type C1

183 sq m/1970 sq ft
4-Bedroom Apartment
Block 128 - #02-02 to #04-02
#02-03 to #04-03
Block 136 - #02-17 to #04-17
#02-18 to #04-18



128

136

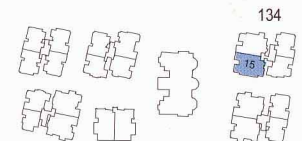
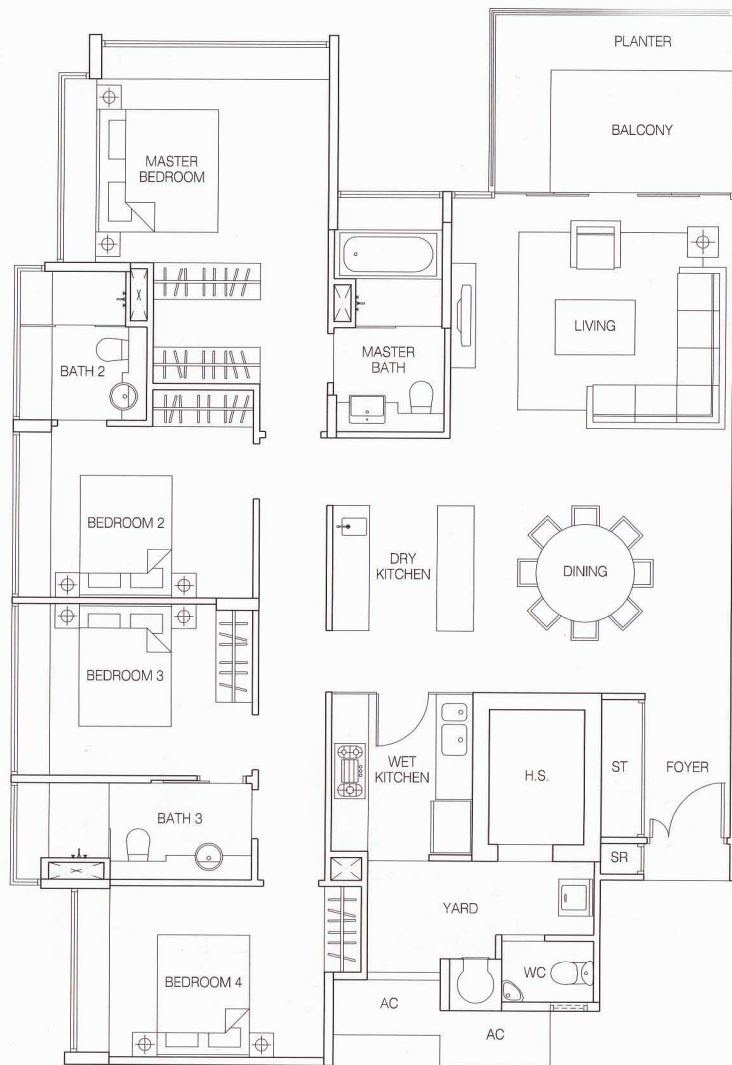
MARINE PARADE ROAD



The above plans are subject to change as may be approved by the relevant authority. Areas are approximate measurements and subject to final survey. Plans are not to scale.

Type C2

178 sq m/1916 sq ft
4-Bedroom Apartment
Block 134 - #02-15 to #07-15

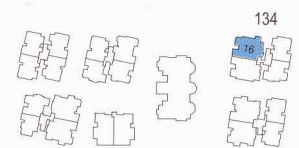
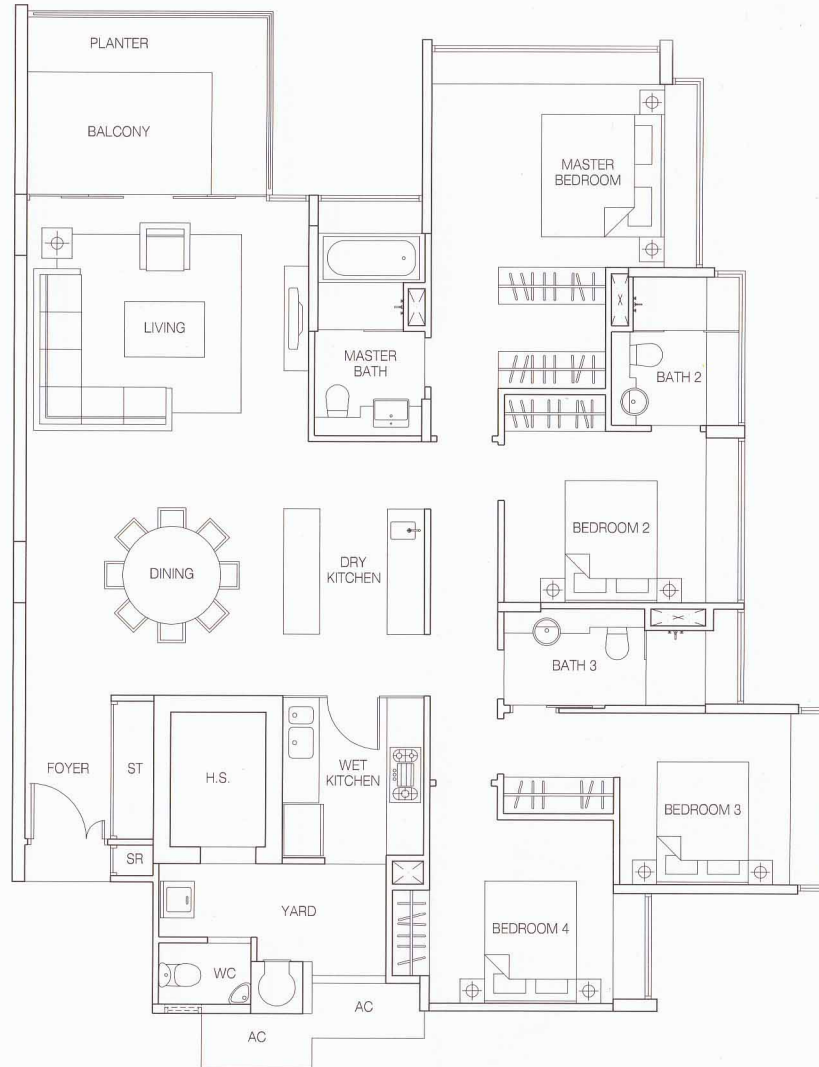


134
15
N MARINE PARADE ROAD

The above plans are subject to change as may be approved by the relevant authority. Areas are approximate measurements and subject to final survey. Plans are not to scale.

Type C2a

178 sq m/1916 sq ft
4-Bedroom Apartment
Block 134 - #02-16 to #07-16



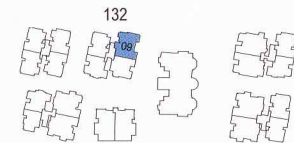
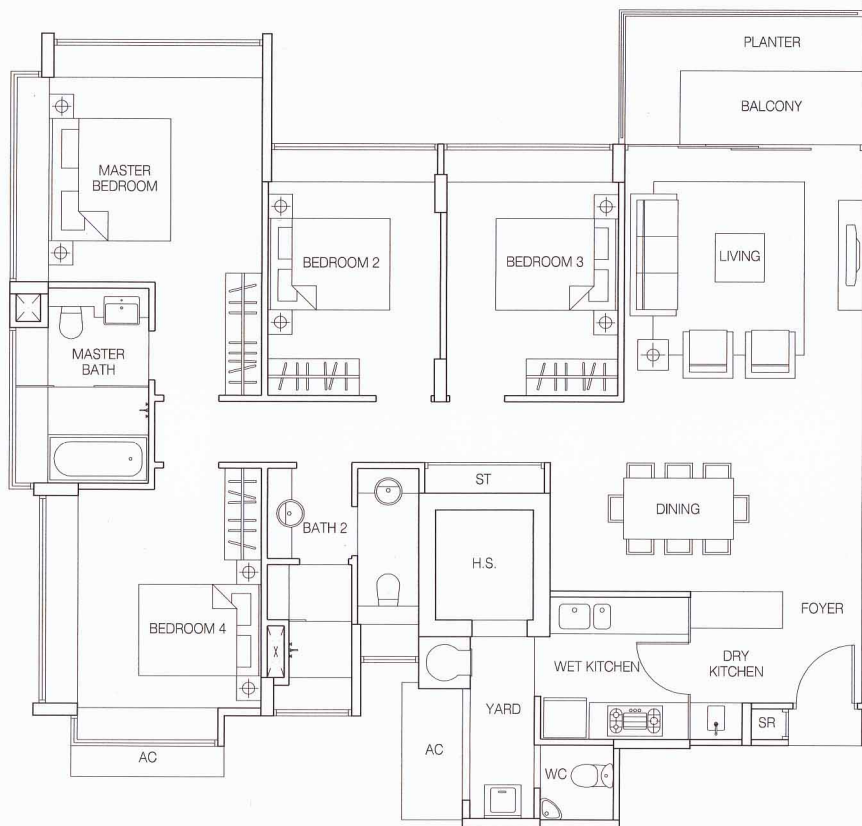
134
#16
MARINE PARADE ROAD

The above plans are subject to change as may be approved by the relevant authority. Areas are approximate measurements and subject to final survey. Plans are not to scale.



Type C3

155 sq m/1668 sq ft
4-Bedroom Apartment
Block 132 - #02-09 to #07-09



MARINE PARADE ROAD

The above plans are subject to change as may be approved by the relevant authority. Areas are approximate measurements and subject to final survey. Plans are not to scale.



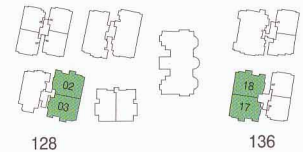
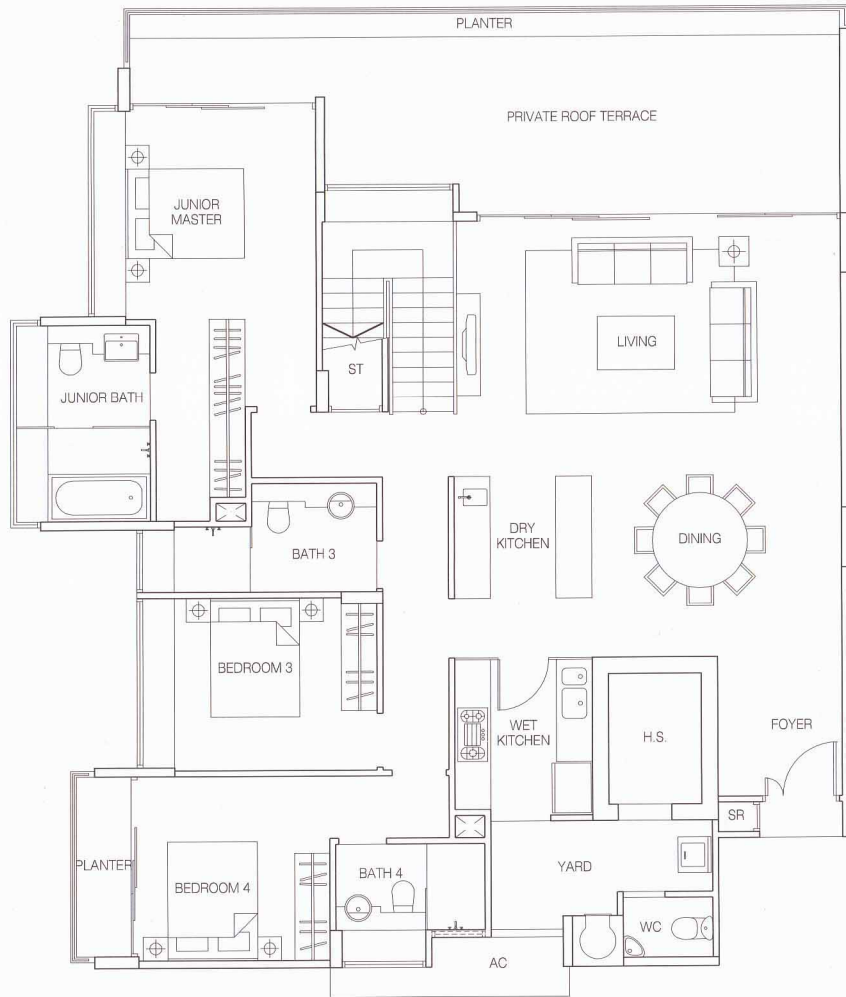
Type DP1 (Lower Storey)

299 sq m/3218 sq ft

4-Bedroom Duplex

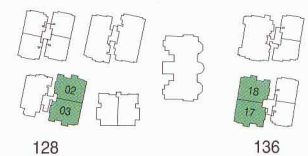
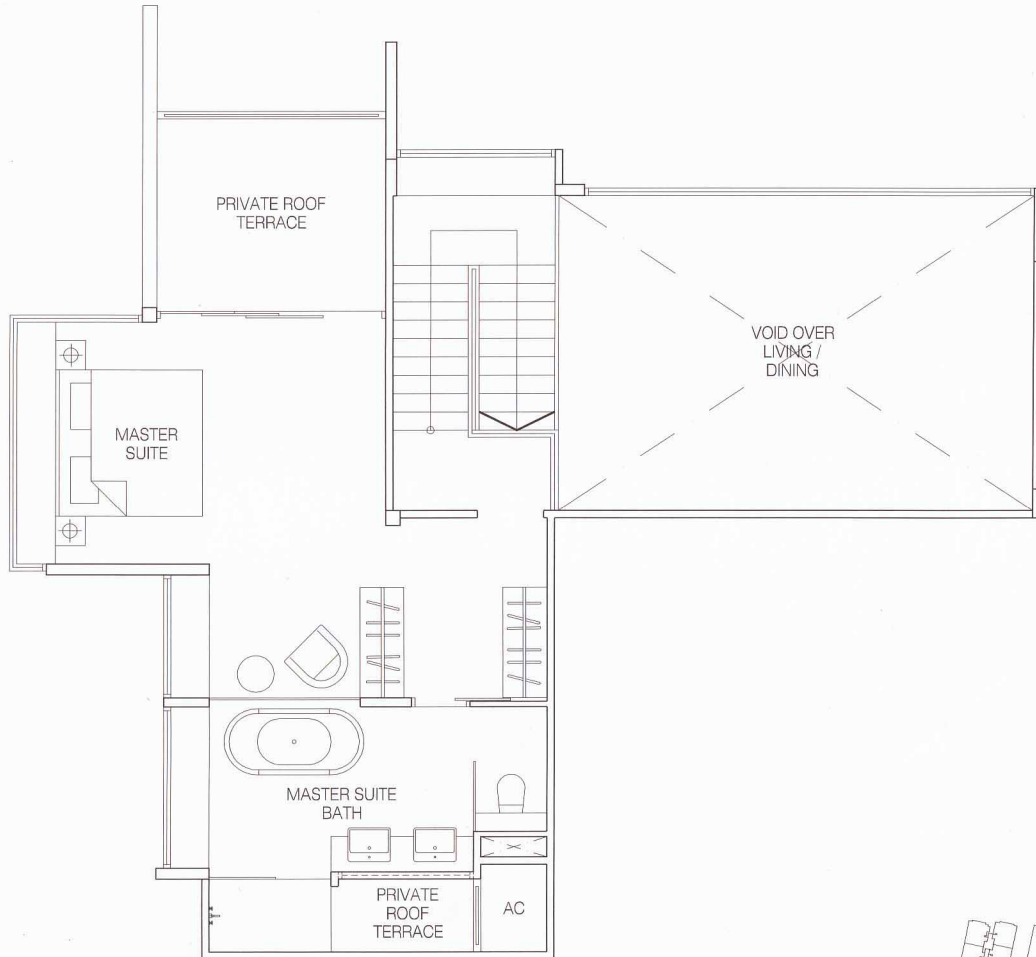
Block 128 - #05-02, #05-03

Block 136 - #05-17, #05-18



The above plans are subject to change as may be approved by the relevant authority. Areas are approximate measurements and subject to final survey. Plans are not to scale.

Type DP1 (Upper Storey)



128

136

MARINE PARADE ROAD



Type DP2 (Lower Storey)

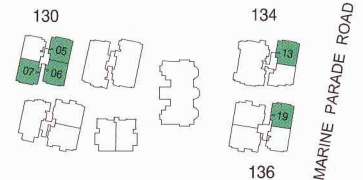
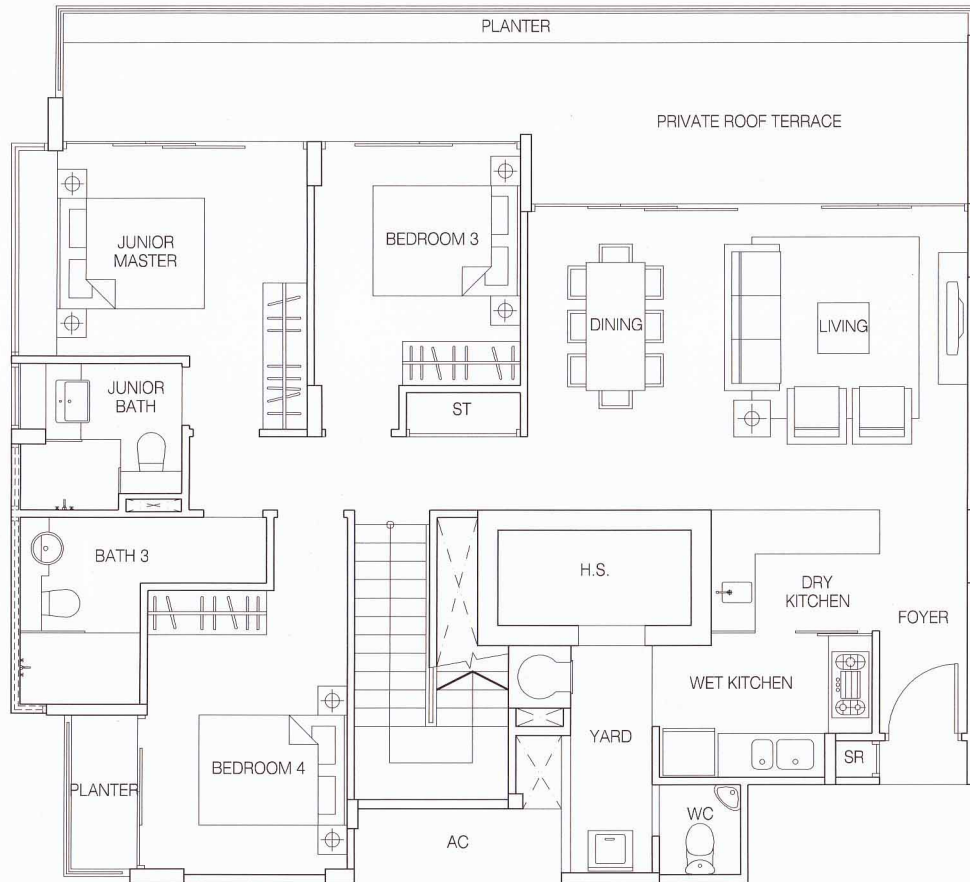
239 sq m/2573 sq ft

4-Bedroom Duplex

Block 130 - #05-05, #05-06, #05-07

Block 134 - #08-13

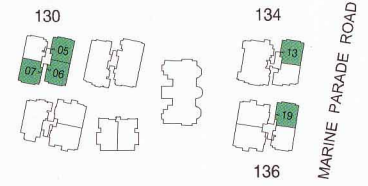
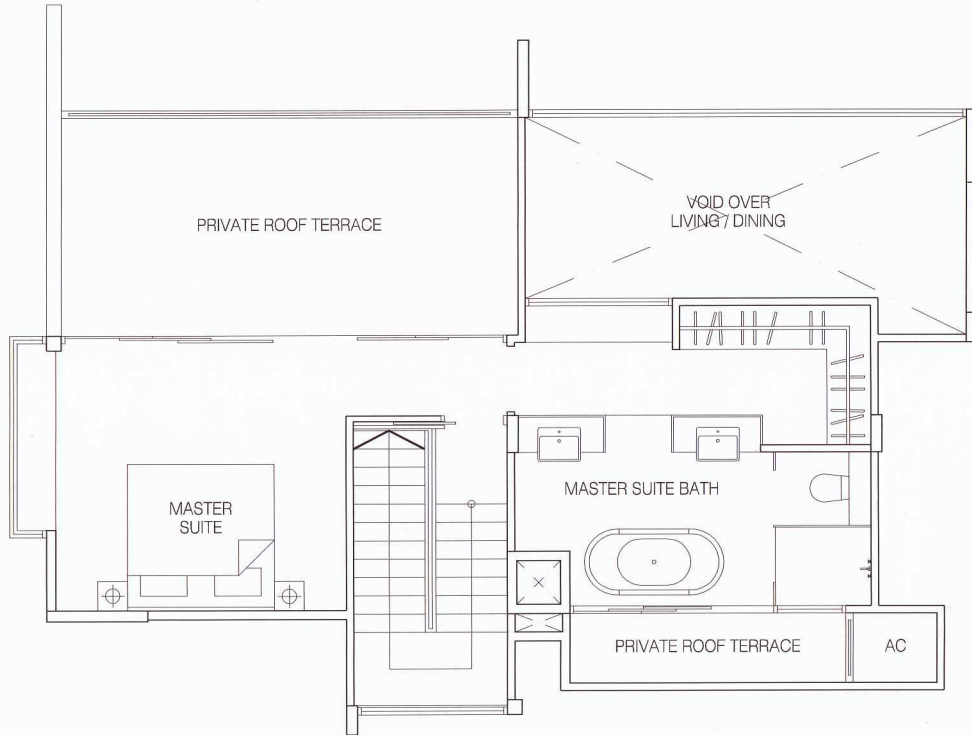
Block 136 - #05-19



The above plans are subject to change as may be approved by the relevant authority. Areas are approximate measurements and subject to final survey. Plans are not to scale.



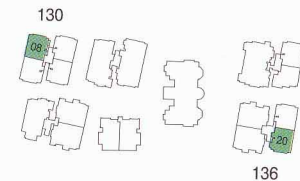
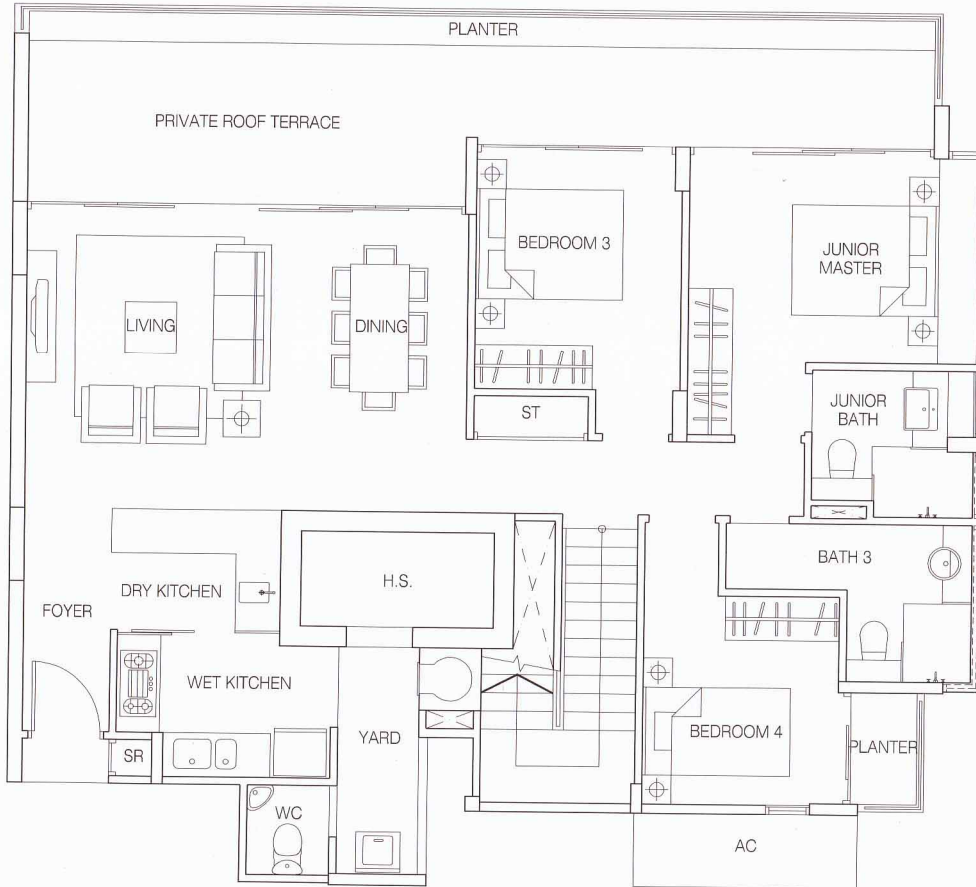
Type DP2 (Upper Storey)



The above plans are subject to change as may be approved by the relevant authority. Areas are approximate measurements and subject to final survey. Plans are not to scale.

Type DP3 (Lower Storey)

233 sq m/2508 sq ft
4-Bedroom Duplex
Block 130 - #05-08
Block 136 - #05-20

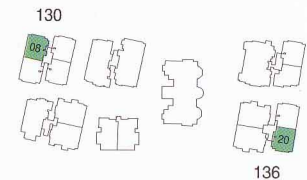
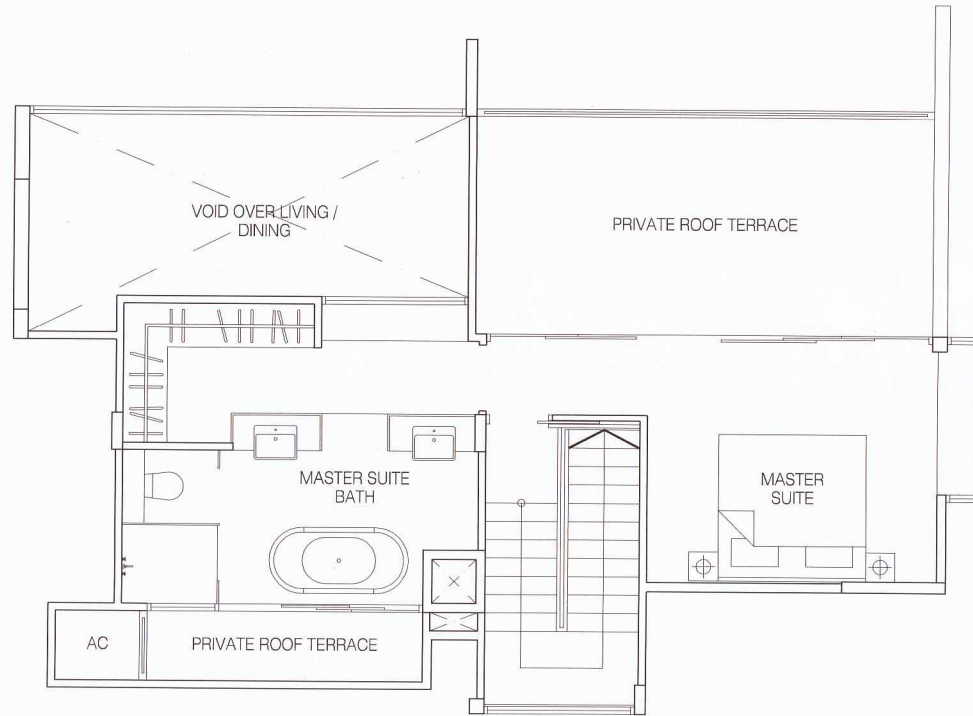


MARINE PARADE ROAD

The above plans are subject to change as may be approved by the relevant authority. Areas are approximate measurements and subject to final survey. Plans are not to scale.



Type DP3 (Upper Storey)

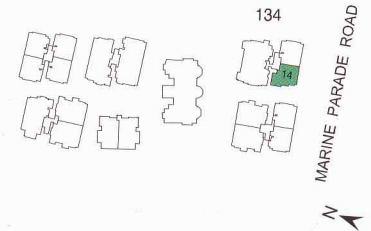
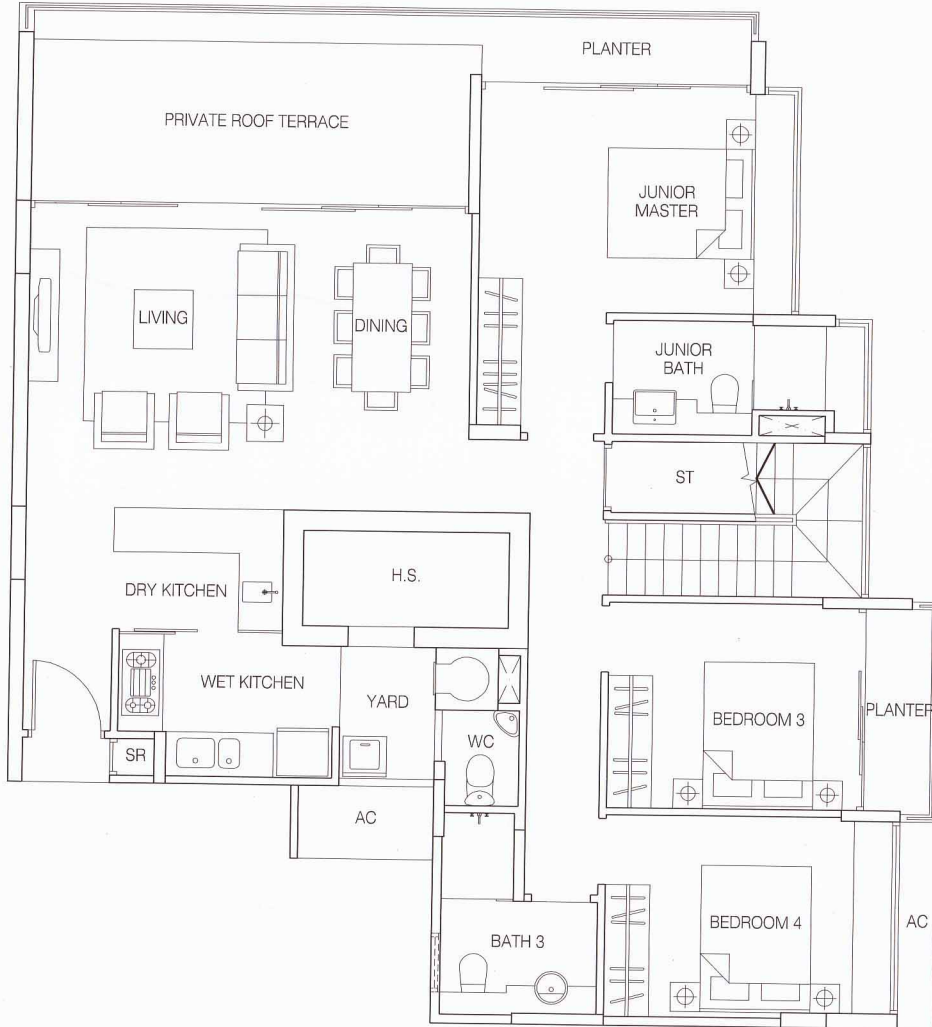


The above plans are subject to change as may be approved by the relevant authority. Areas are approximate measurements and subject to final survey. Plans are not to scale.



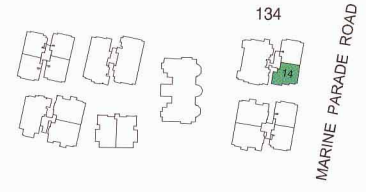
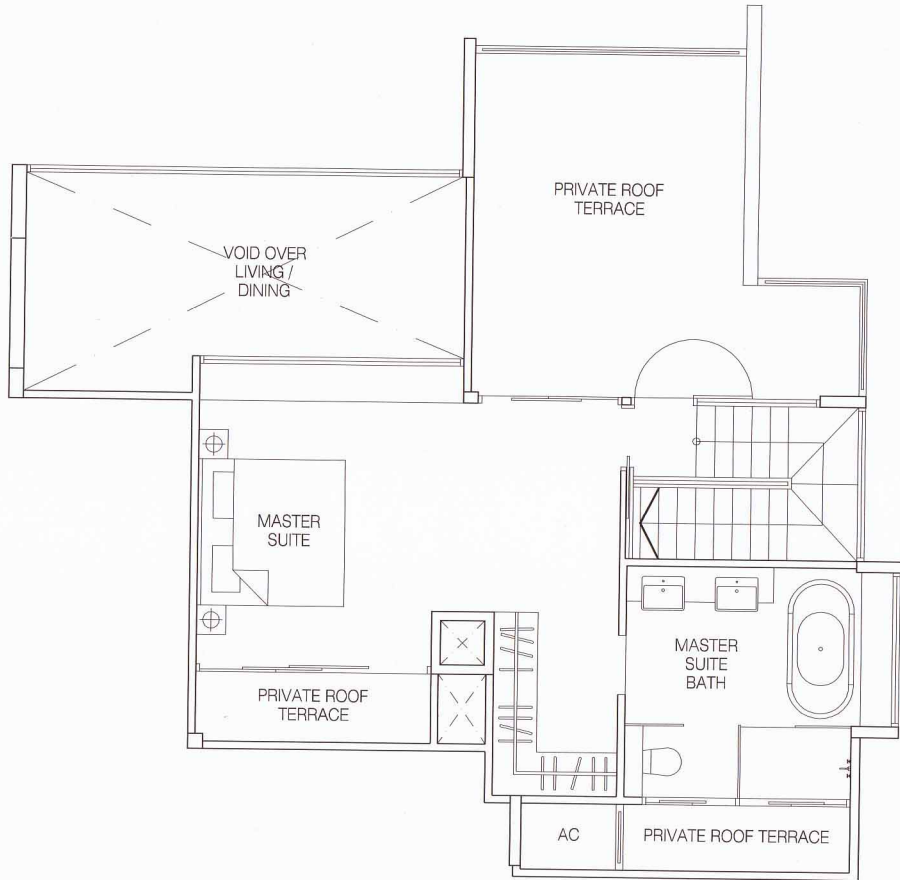
Type DP4 (Lower Storey)

236 sq m/2540 sq ft
4-Bedroom Duplex
Block 134 - #08-14



The above plans are subject to change as may be approved by the relevant authority. Areas are approximate measurements and subject to final survey. Plans are not to scale.

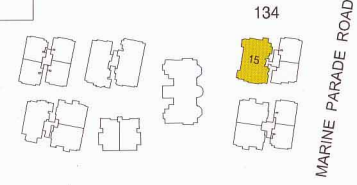
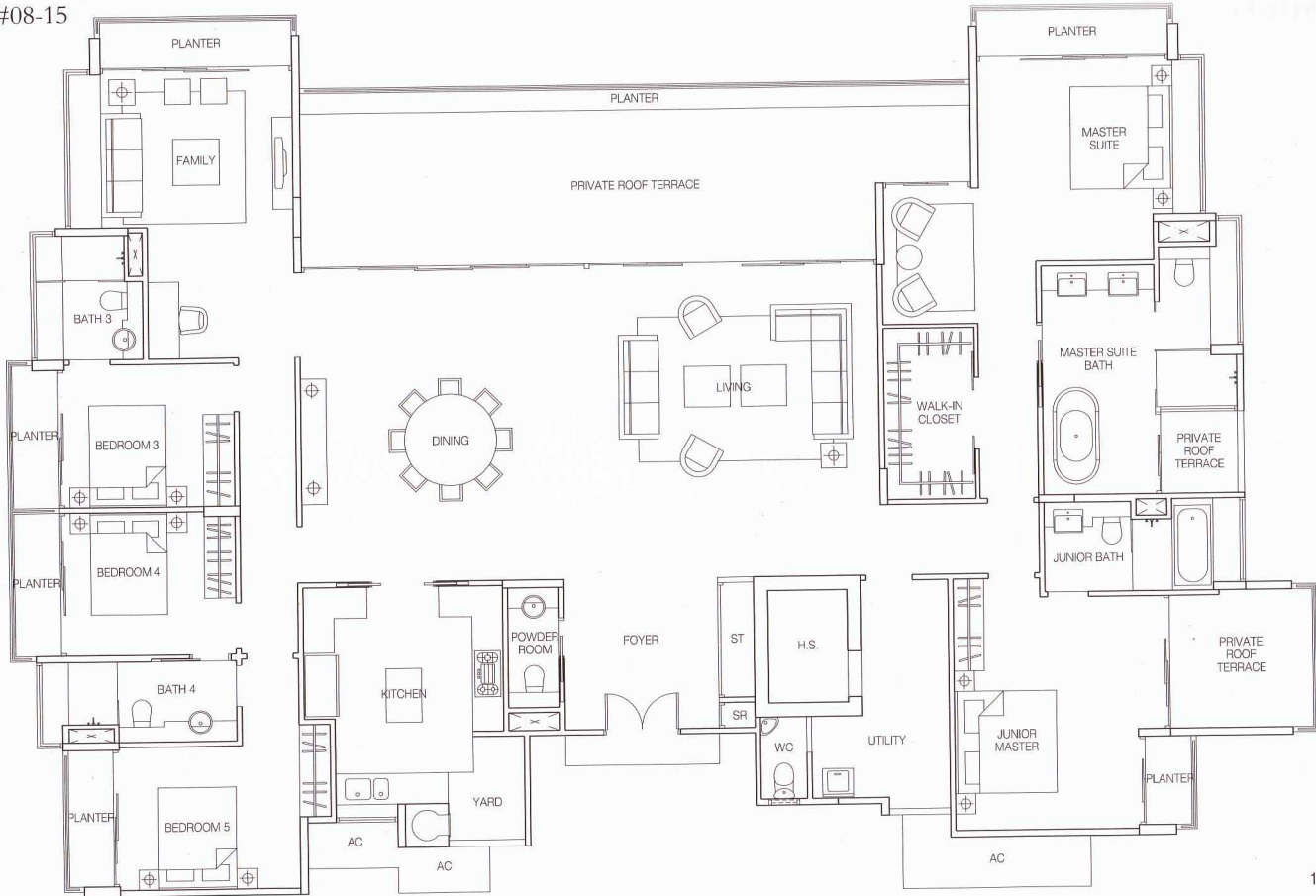
Type DP4 (Upper Storey)



The above plans are subject to change as may be approved by the relevant authority. Areas are approximate measurements and subject to final survey. Plans are not to scale.

Type PH1

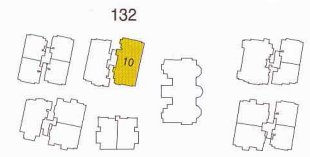
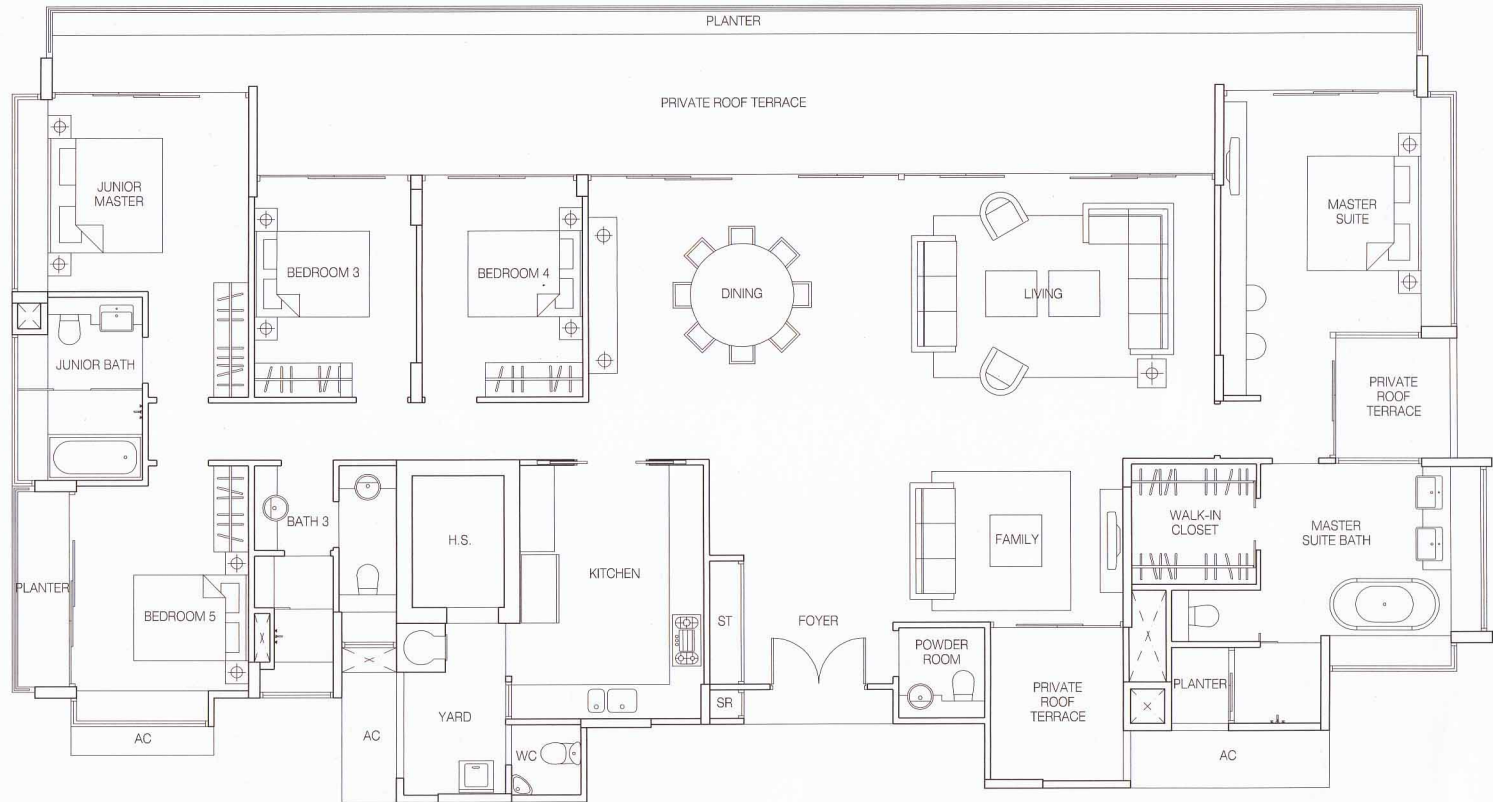
360 sq m/3875 sq ft
5-Bedroom Penthouse
Block 134 - #08-15



The above plans are subject to change as may be approved by the relevant authority. Areas are approximate measurements and subject to final survey. Plans are not to scale.

Type PH2

322 sq m/3466 sq ft
5-Bedroom Penthouse
Block 132 - #08-10



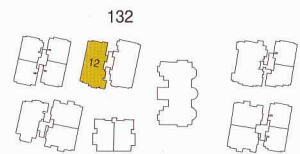
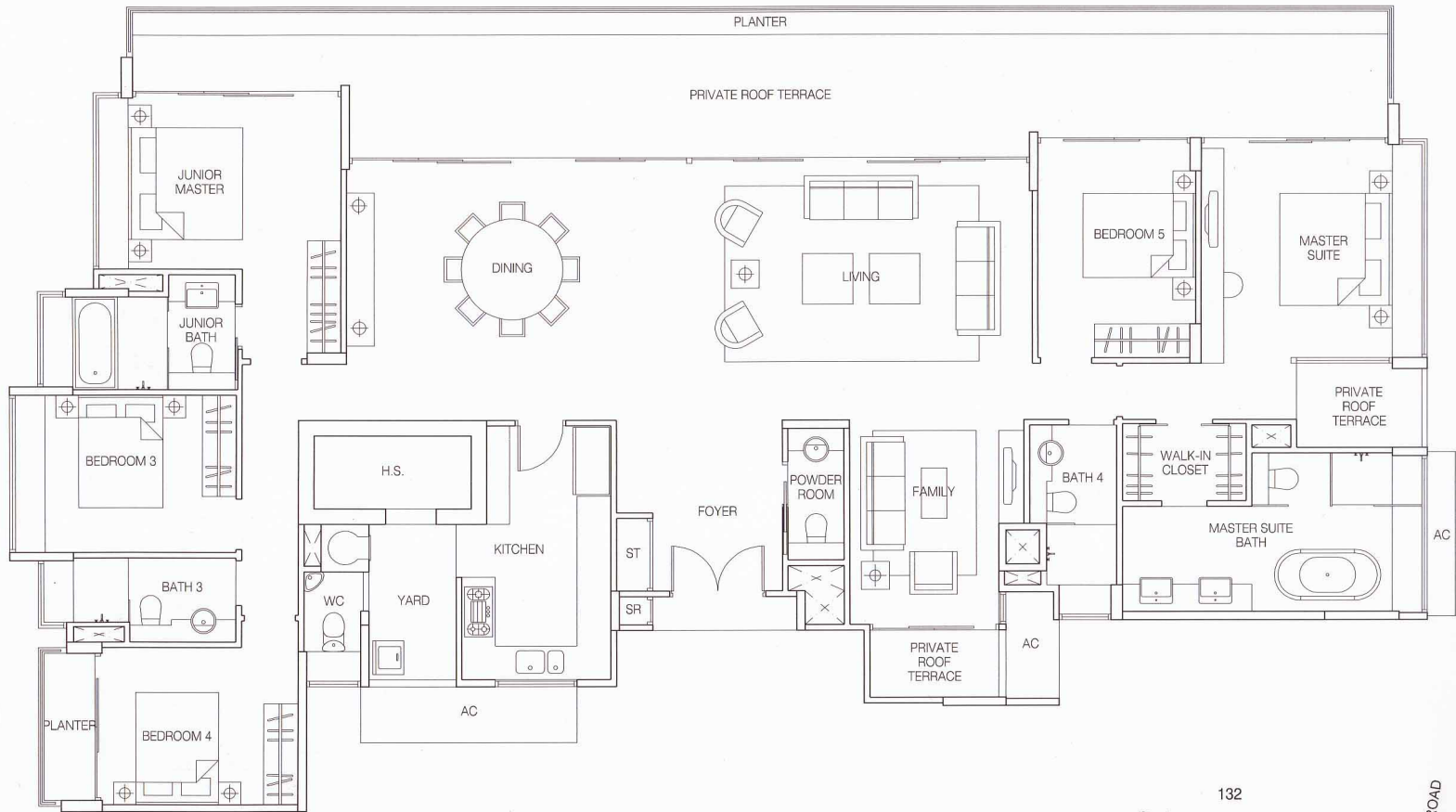
MARINE PARADE ROAD



The above plans are subject to change as may be approved by the relevant authority. Areas are approximate measurements and subject to final survey. Plans are not to scale.

Type PH3

294 sq m/3165 sq ft
 5-Bedroom Penthouse
 Block 132 - #08-12



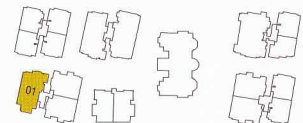
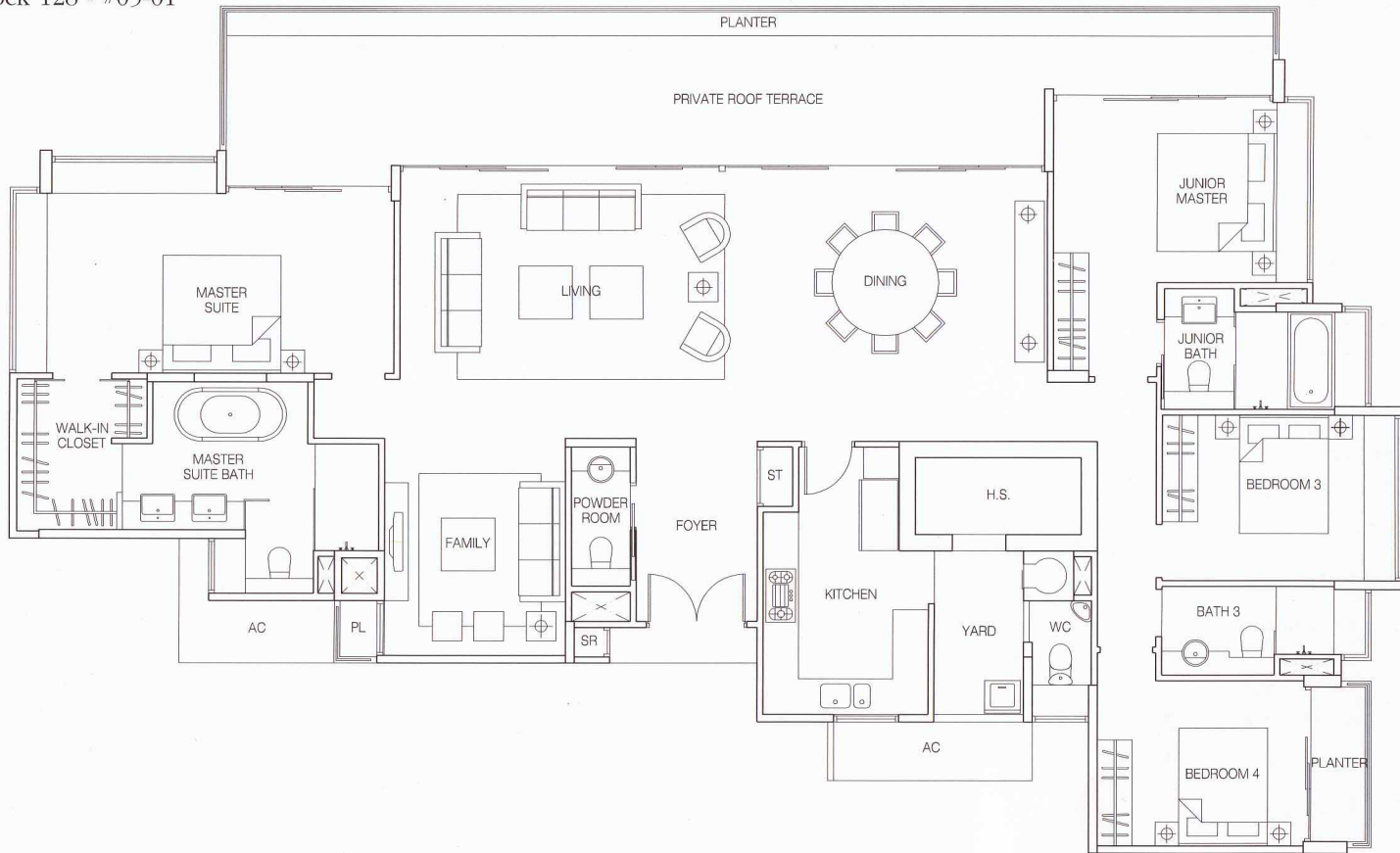
MARINE PARADE ROAD



The above plans are subject to change as may be approved by the relevant authority. Areas are approximate measurements and subject to final survey. Plans are not to scale.

Type PH4

257 sq m/2766 sq ft
4-Bedroom Penthouse
Block 128 - #05-01



128

N
MARINE PARADE ROAD

The above plans are subject to change as may be approved by the relevant authority. Areas are approximate measurements and subject to final survey. Plans are not to scale.