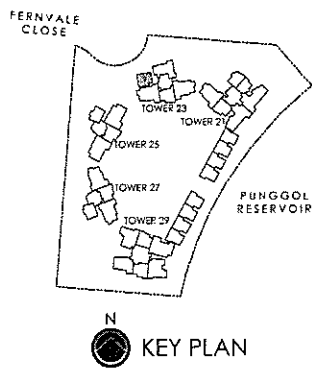
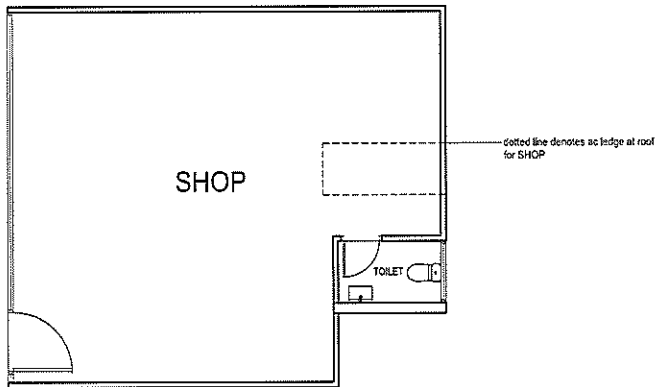


**SHOP**  
61.00 sqm / 657 sqft

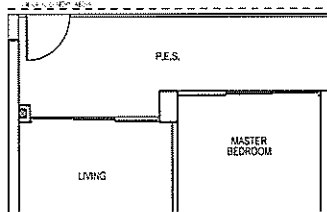
#01-09



Area includes A/C ledge, balcony, PES and void area. Some units are mirror images of the apartment plans shown in the brochure. Please refer to the key plans for orientation. The plans are subject to change as may be approved by the relevant authorities. All floors areas are approximate measurements only and are subject to government resurvey. Abbreviation: A/C ledge (Aircon Ledge), PES (Private Enclosed Space), ST (Store), DB (Distribution Board).

**TYPE Ap**  
**1 - BEDROOM SUITES**  
53.00 sqm / 570 sqft

#01-05 **HIGH CEILING**

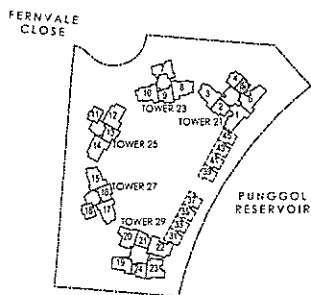
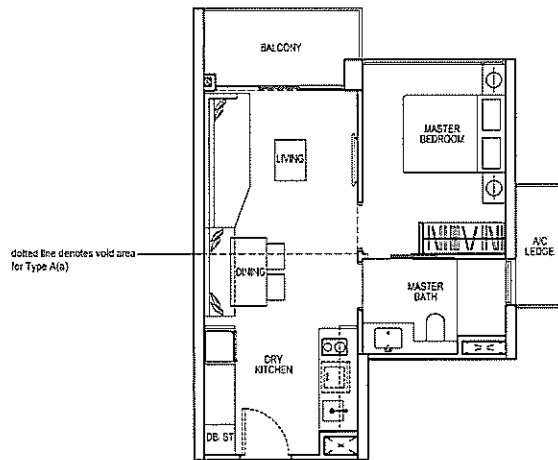


**TYPE A**  
**1 - BEDROOM SUITES**  
47.00 sqm / 506 sqft

#02-05 to #21-05

**TYPE A(a)**  
**1 - BEDROOM SUITES**  
57.00 sqm / 614 sqft  
 inclusive of void area of 10 sqm above living

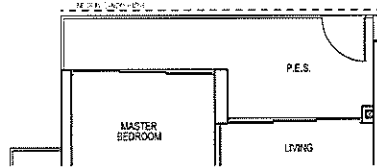
#22-05



Area includes A/C ledge, balcony, PES and void area. Some units are mirror images of the apartment plans shown in the brochure. Please refer to the key plans for orientation. The plans are subject to change as may be approved by the relevant authorities. All floors areas are approximate measurements only and are subject to government resurvey. Abbreviation: A/C ledge (Aircon Ledge), PES (Private Enclosed Space), ST (Store), DB (Distribution Board).

**TYPE Bp**  
**2 - BEDROOM SUITES**  
59.00 sqm / 635 sqft

#01-04 **HIGH CEILING**

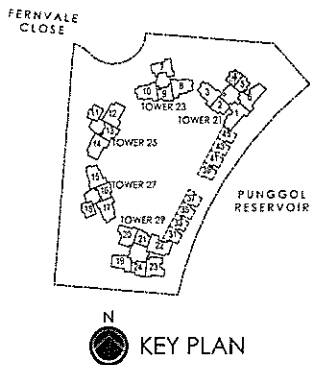
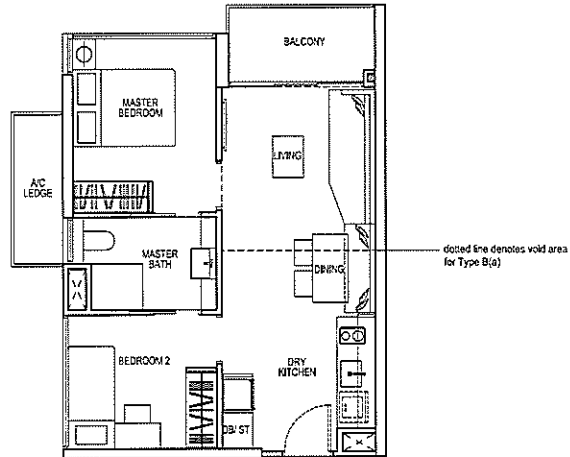
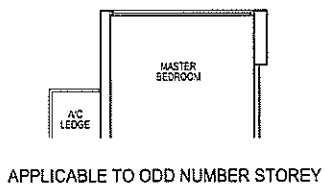


**TYPE B**  
**2 - BEDROOM SUITES**  
54.00 sqm / 581 sqft

#02-04 to #21-04

**TYPE B(a)**  
**2 - BEDROOM SUITES**  
64.00 sqm / 689 sqft  
 inclusive of void area of 10 sqm above living

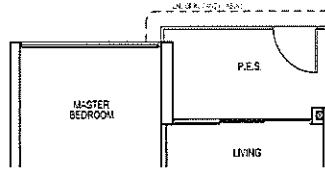
#22-04



Area includes A/C ledge, balcony, PES and void area. Some units are mirror images of the apartment plans shown in the brochure. The plans are subject to change as may be approved by the relevant authorities. All floors areas are approximate measurements only and are subject to government resurvey. Abbreviation: A/C ledge (Aircon Ledge), PES (Private Enclosed Space), ST (Store), DB (Distribution Board).

**TYPE B1p**  
**2 - BEDROOM SUITES**  
55.00 sqm / 592 sqft

#01-18\* **HIGH CEILING**

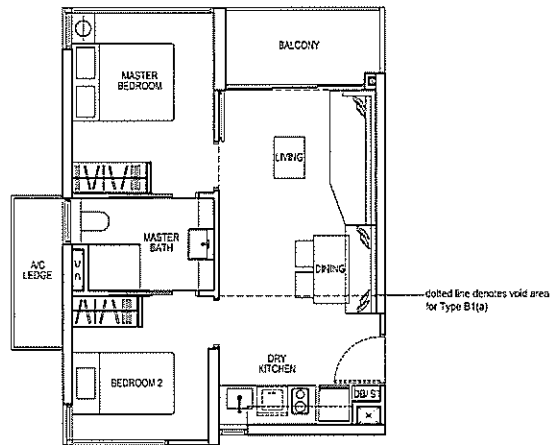
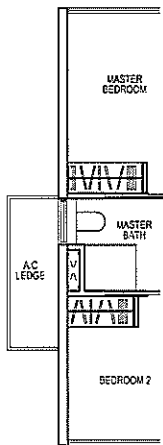


**TYPE B1**  
**2 - BEDROOM SUITES**  
54.00 sqm / 581 sqft

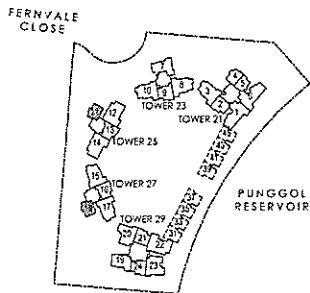
#03-11 to #19-11  
 #02-18\* to #19-18\*

**TYPE B1(a)**  
**2 - BEDROOM SUITES**  
67.00 sqm / 721 sqft  
 Inclusive of void area of 13 sqm above living

#20-11 , #20-18\*



APPLICABLE TO ODD NUMBER STOREY



**KEY PLAN**

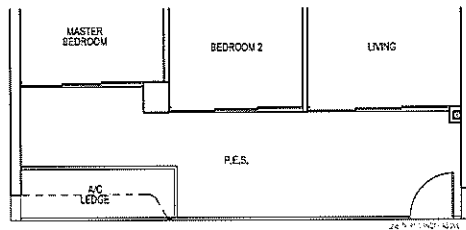
\*Mirror image



Area includes A/C ledge, balcony, PES and void area. Some units are mirror images of the apartment plans shown in the brochure. Please refer to the key plans for orientation. The plans are subject to change as may be approved by the relevant authorities. All floors areas are approximate measurements only and are subject to government resurvey. Abbreviation: A/C ledge (Aircon Ledge), PES (Private Enclosed Space), ST (Store), DB (Distribution Board).

**TYPE B2p**  
**2 - BEDROOM DELUXE SUITES**  
77.00 sqm / 829 sqft

#01-24 **HIGH CEILING**

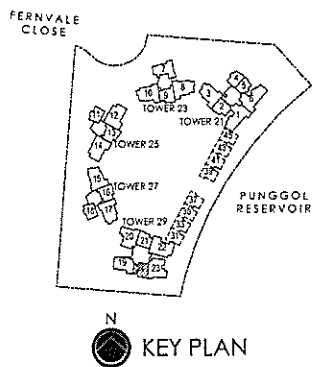
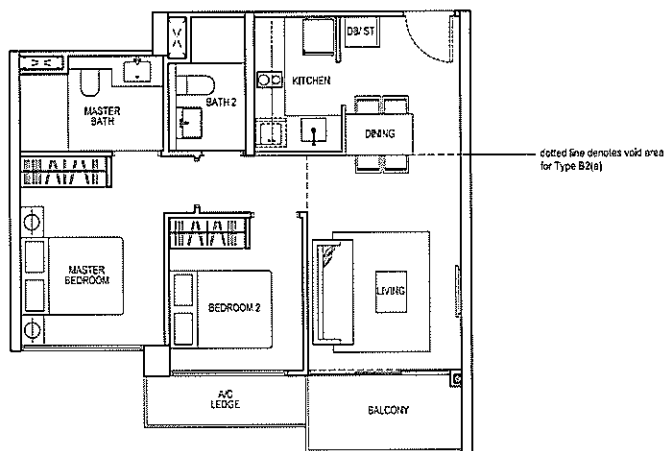


**TYPE B2**  
**2 - BEDROOM DELUXE SUITES**  
65.00 sqm / 700 sqft

#02-24 to #21-24

**TYPE B2(a)**  
**2 - BEDROOM DELUXE SUITES**  
78.00 sqm / 840 sqft  
 inclusive of void area of 13 sqm above living

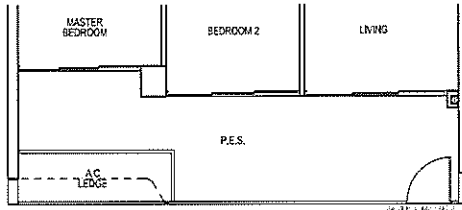
#22-24



Area includes A/C ledge, balcony, PES and void area. Some units are mirror images of the apartment plans shown in the brochure. The plans are subject to change as may be approved by the relevant authorities. All floors areas are approximate measurements only and are subject to government resurvey. Abbreviation: A/C ledge (Aircon Ledge), PES (Private Enclosed Space), ST (Store), DB (Distribution Board).

**TYPE B3p**  
**2 - BEDROOM DELUXE SUITES**  
80.00 sqm / 881 sqft

#02-09  
 #02-13  
 #02-16

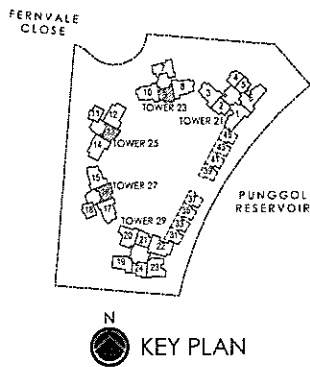
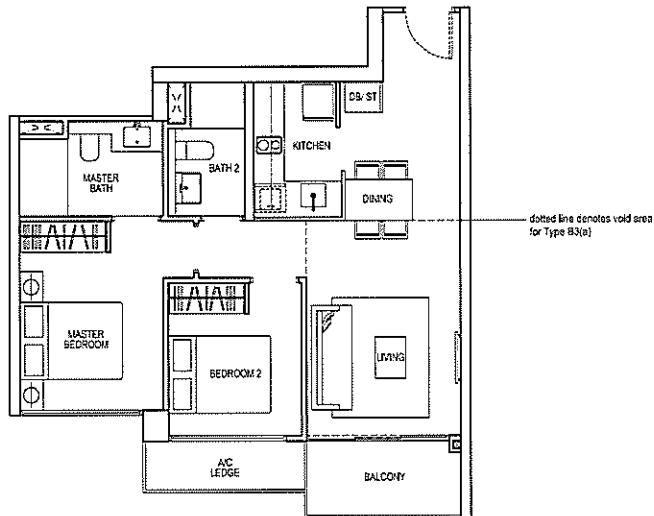


**TYPE B3**  
**2 - BEDROOM DELUXE SUITES**  
68.00 sqm / 732 sqft

#03-09 to #19-09  
 #03-13 to #19-13  
 #03-16 to #19-16

**TYPE B3(a)**  
**2 - BEDROOM DELUXE SUITES**  
81.00 sqm / 872 sqft  
 inclusive of void area of 13 sqm above living

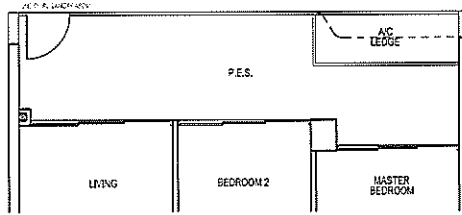
#20-09  
 #20-13  
 #20-16



Area includes A/C ledge, balcony, PES and void area. Some units are mirror images of the apartment plans shown in the brochure. Please refer to the key plans for orientation. The plans are subject to change as may be approved by the relevant authorities. All floors areas are approximate measurements only and are subject to government resurvey. Abbreviation: A/C ledge (Aircon Ledge), PES (Private Enclosed Space), ST (Store), DB (Distribution Board).

**TYPE B4p**  
**2 - BEDROOM DELUXE SUITES**  
**78.00 sqm / 840 sqft**

#02-21



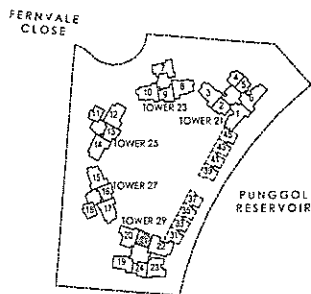
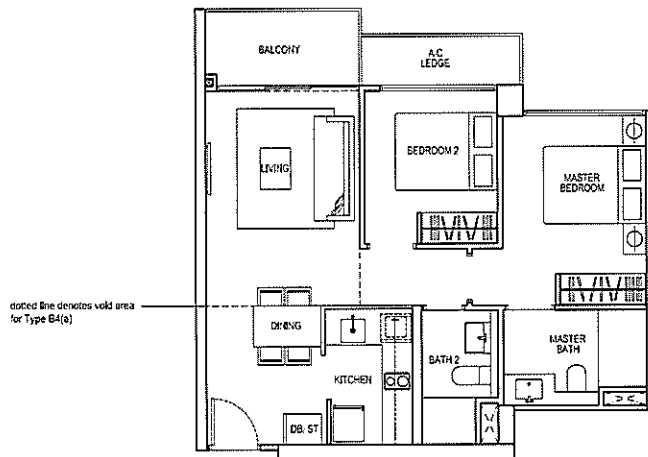
**TYPE B4**  
**2 - BEDROOM DELUXE SUITES**  
**66.00 sqm / 710 sqft**

#03-21 to #21-21

**TYPE B4(a)**  
**2 - BEDROOM DELUXE SUITES**  
**79.00 sqm / 850 sqft**

#22-21

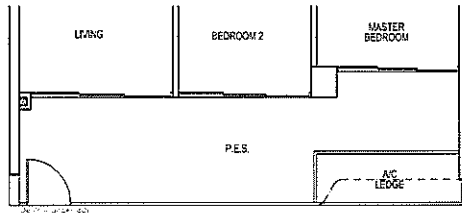
*Inclusive of void area of 13 sqm above living*



Area includes A/C ledge, balcony, PES and void area. Some units are mirror images of the apartment plans shown in the brochure. Please refer to the key plans for orientation. The plans are subject to change as may be approved by the relevant authorities. All floors areas are approximate measurements only and are subject to government resurvey. Abbreviation: A/C ledge (Aircon Ledge), PES (Private Enclosed Space), ST (Store), DB (Distribution Board).

**TYPE B5p**  
**2 - BEDROOM DELUXE SUITES**  
77.00 sqm / 829 sqft

#02-02

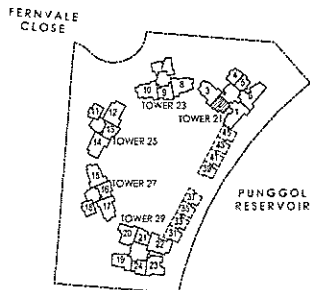
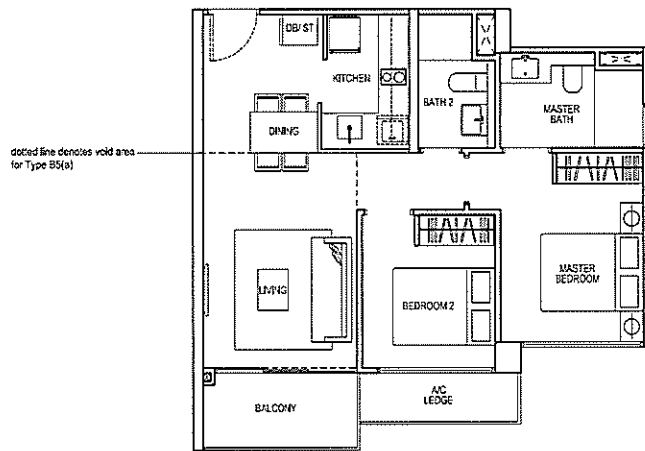


**TYPE B5**  
**2 - BEDROOM DELUXE SUITES**  
65.00 sqm / 700 sqft

#03-02 to #21-02

**TYPE B5(a)**  
**2 - BEDROOM DELUXE SUITES**  
78.00 sqm / 840 sqft  
 Inclusive of void area of 13 sqm above living

#22-02

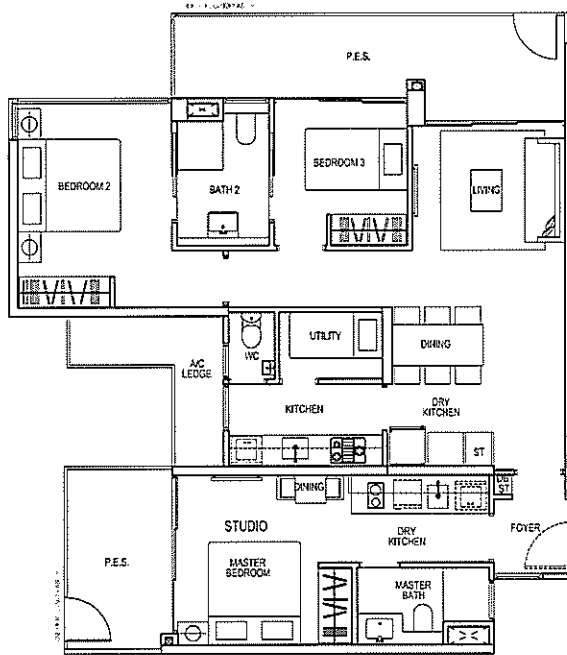


Area includes A/C ledge, balcony, PES and void area. Some units are mirror images of the apartment plans shown in the brochure. Please refer to the key plans for orientation. The plans are subject to change as may be approved by the relevant authorities. All floors areas are approximate measurements only and are subject to government resurvey. Abbreviation: A/C ledge (Aircon Ledge), PES (Private Enclosed Space), ST (Store), DB (Distribution Board).



**TYPE C TRp**  
**3 - BEDROOM TRIO**  
 116.00 sqm / 1249 sqft

#02-20  
 #01-23 **HIGH CEILING**

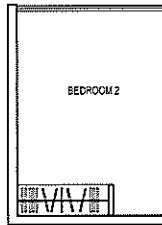


**TYPE C TR**  
**3 - BEDROOM TRIO**  
 104.00 sqm / 1119 sqft

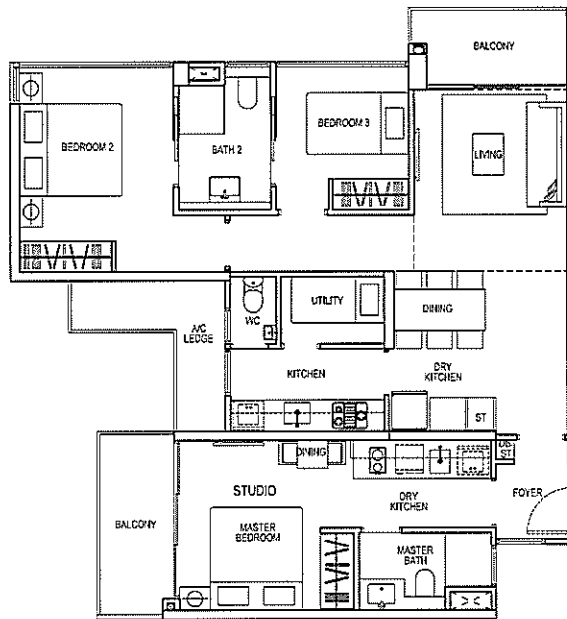
#03-20 to #21-20  
 #02-23 to #21-23

**TYPE C TR(a)**  
**3 - BEDROOM TRIO**  
 115.00 sqm / 1238 sqft  
 inclusive of void area of 11 sqm above living

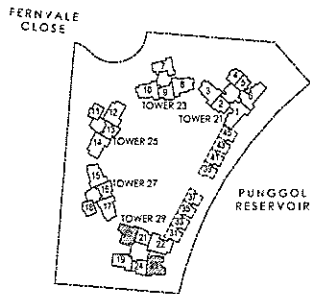
#22-20  
 #22-23



APPLICABLE TO ODD NUMBER STOREY



dotted line denotes void area for Type C TR(a)



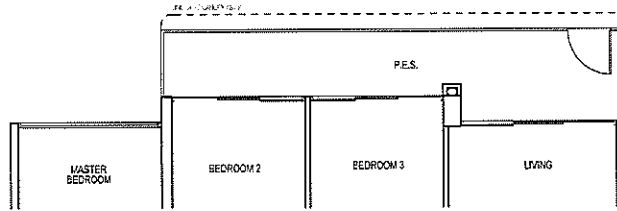
**KEY PLAN**

0 1 2 3 4 5 METERS

Area includes A/C ledge, balcony, PES and void area. Some units are mirror images of the apartment plans shown in the brochure. The plans are subject to change as may be approved by the relevant authorities. All floors areas are approximate measurements only and are subject to government survey. Abbreviation: A/C ledge (Aircon Ledge), PES (Private Enclosed Space), ST (Store), DB (Distribution Board).

**TYPE Cp**  
**3 - BEDROOM VANTAGE**  
95.00 sqm / 1023 sqft

#01-07 **HIGH CEILING**

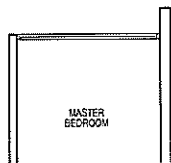


**TYPE C**  
**3 - BEDROOM VANTAGE**  
88.00 sqm / 947 sqft

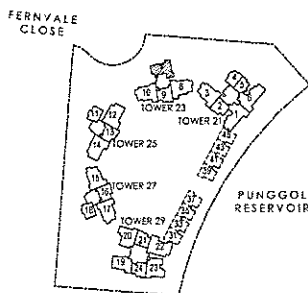
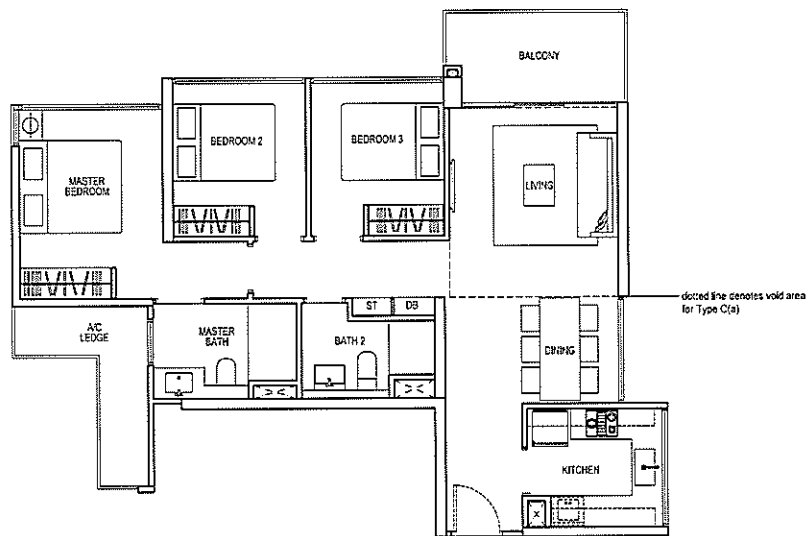
#02-07 to #19-07

**TYPE C(a)**  
**3 - BEDROOM VANTAGE**  
101.00 sqm / 1087 sqft  
 Inclusive of void area of 13 sqm above living

#20-07



APPLICABLE TO ODD NUMBER STOREY



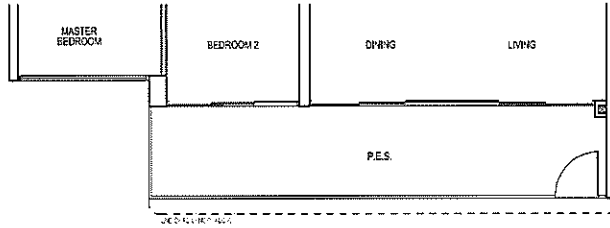
**KEY PLAN**

0 1 2 3 4 5 METERS

Area includes A/C ledge, balcony, PES and void area. Some units are mirror images of the apartment plans shown in the brochure. Please refer to the key plans for orientation. The plans are subject to change as may be approved by the relevant authorities. All floors areas are approximate measurements only and are subject to government resurvey. Abbreviation: A/C ledge (Aircon Ledge), PES (Private Enclosed Space), ST (Store), DB (Distribution Board).

**TYPE C1p**  
**3 - BEDROOM VISTA**  
97.00 sqm / 1044 sqft

#01-19 **HIGH CEILING**

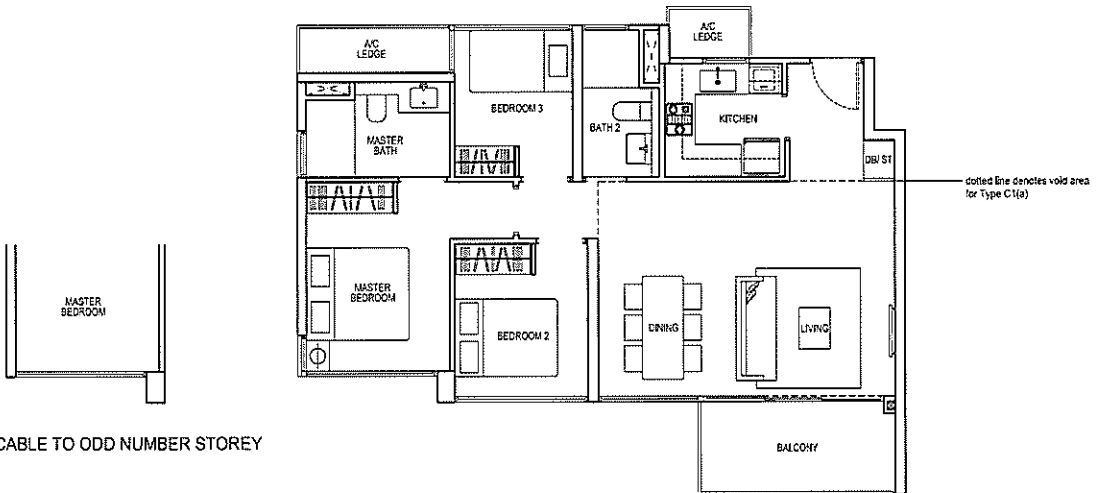


**TYPE C1**  
**3 - BEDROOM VISTA**  
88.00 sqm / 947 sqft

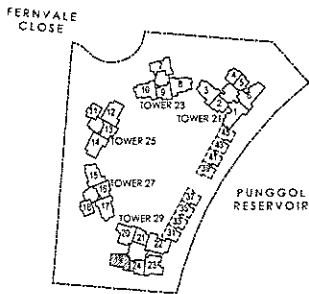
#02-19 to #21-19

**TYPE C1(a)**  
**3 - BEDROOM VISTA**  
113.00 sqm / 1216 sqft  
 inclusive of void area of 25 sqm above living

#22-19



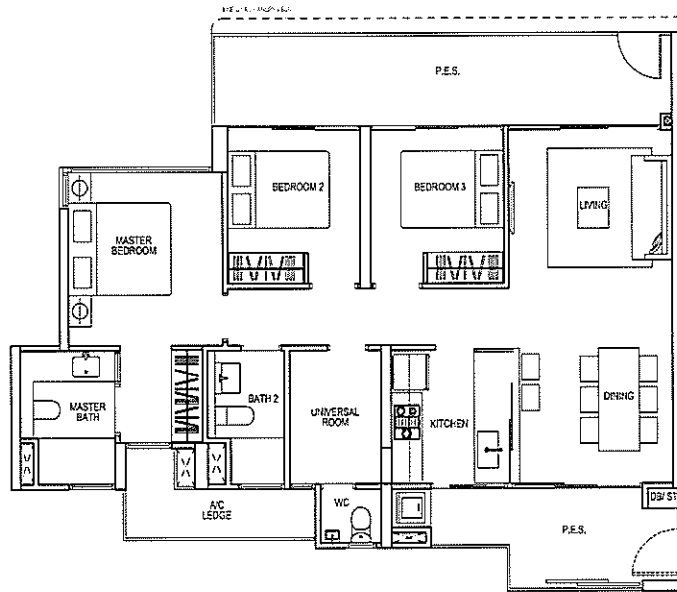
APPLICABLE TO ODD NUMBER STOREY



Area includes A/C ledge, balcony, PES and void area. Some units are mirror images of the apartment plans shown in the brochure. Please refer to the key plans for orientation. The plans are subject to change as may be approved by the relevant authorities. All floors areas are approximate measurements only and are subject to government resurvey. Abbreviation: A/C ledge (Aircon Ledge), PES (Private Enclosed Space), ST (Store), DB (Distribution Board).

**TYPE C2p**  
**3 - BEDROOM DELUXE VERANDAH**  
114.00 sqm / 1227 sqft

#02-03\*  
 #02-08  
 #02-10\*  
 #02-15  
 #02-17\*

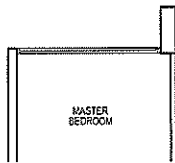


**TYPE C2**  
**3 - BEDROOM DELUXE VERANDAH**  
104.00 sqm / 1119 sqft

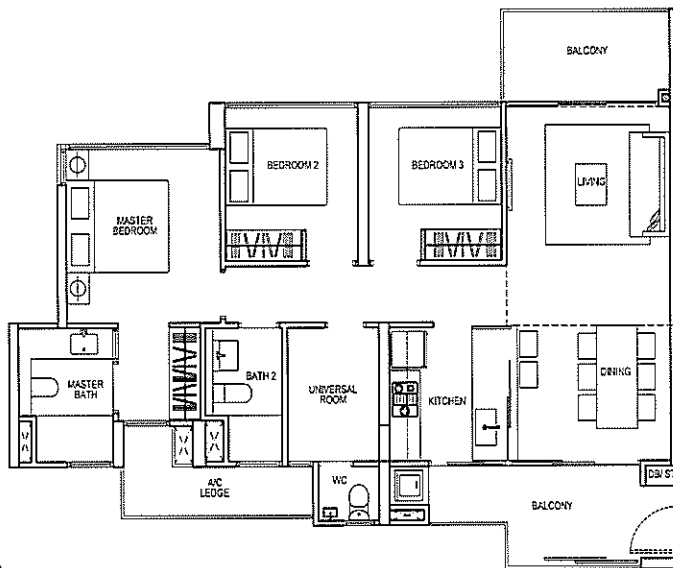
#03-03\* to #21-03\*  
 #03-08 to #19-08  
 #03-10\* to #19-10\*  
 #03-15 to #19-15  
 #03-17\* to #19-17\*

**TYPE C2(a)**  
**3 - BEDROOM DELUXE VERANDAH**  
118.00 sqm / 1270 sqft  
 inclusive of void area of 14 sqm above living

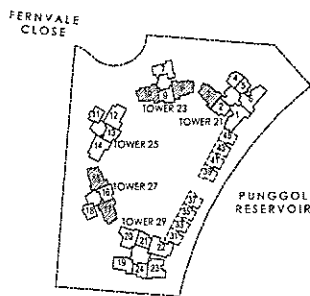
#22-03\*  
 #20-08  
 #20-10\*  
 #20-15  
 #20-17\*



APPLICABLE TO ODD NUMBER STOREY



dotted line denotes void area for Type C2(a)



\*Mirror image



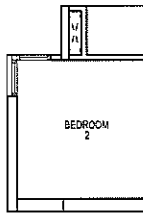
Area includes A/C ledge, balcony, PES and void area. Some units are mirror images of the apartment plans shown in the brochure. Please refer to the key plans for orientation. The plans are subject to change as may be approved by the relevant authorities. All floors areas are approximate measurements only and are subject to government resurvey. Abbreviation: A/C ledge (Aircon Ledge), PES (Private Enclosed Space), ST (Store), DB (Distribution Board).

**TYPE CH**  
**3 - BEDROOM COVE HOUSE**  
 142.00 sqm / 1528 sqft  
 Inclusive of void area 7 sqm above staircase and private carpark lot of 12 sqm

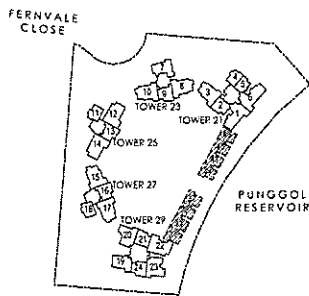
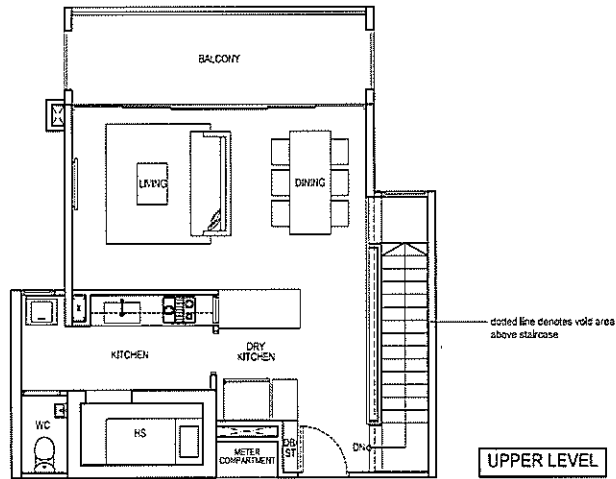
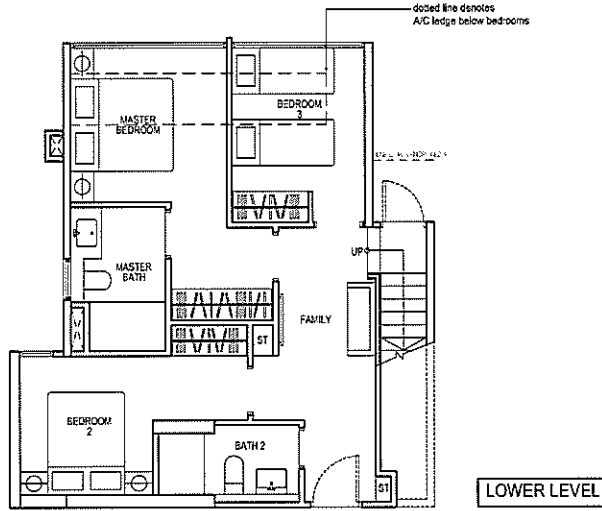
Hse 33, 35\*, 41, 43\*

**TYPE CH(a)**  
**3 - BEDROOM COVE HOUSE**  
 142.00 sqm / 1528 sqft  
 Inclusive of void area 7 sqm above staircase and private carpark lot of 12 sqm

Hse 31\*, 37, 39\*, 45



APPLICABLE TO TYPE CH(a)



N  
 KEY PLAN



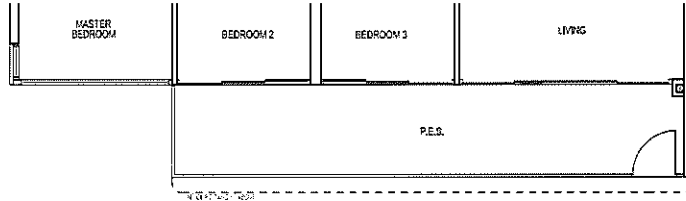
\*Mirror image



Area includes A/C ledge, balcony, PES and void area. Some units are mirror images of the apartment plans shown in the brochure. Please refer to the key plans for orientation. The plans are subject to change as may be approved by the relevant authorities. All floors areas are approximate measurements only and are subject to government resurvey. Abbreviation: A/C ledge (Aircon Ledge), PES (Private Enclosed Space), ST (Store), DB (Distribution Board).

TYPE Dp  
4 - BEDROOM VISTA  
122.00 sqm / 1313 sqft

#02-12\*  
#02-14

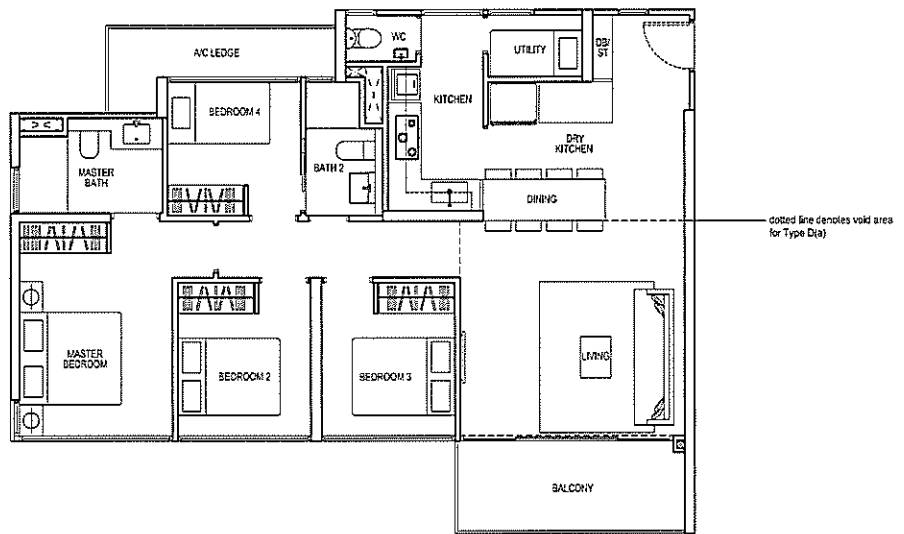


TYPE D  
4 - BEDROOM VISTA  
112.00 sqm / 1206 sqft

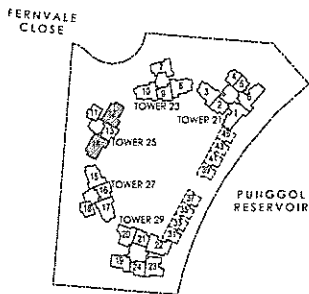
#03-12\* to #19-12\*  
#03-14 to #19-14

TYPE D(a)  
4 - BEDROOM VISTA  
131.00 sqm / 1410 sqft  
inclusive of void area of 19 sqm above living

#20-12\*  
#20-14



APPLICABLE TO ODD NUMBER STOREY



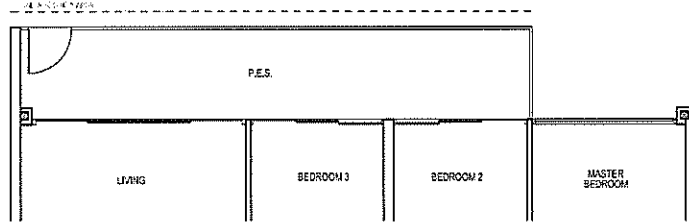
\*Mirror image



Area includes A/C ledge, balcony, PES and void area. Some units are mirror images of the apartment plans shown in the brochure. The plans are subject to change as may be approved by the relevant authorities. All floors areas are approximate measurements only and are subject to government resurvey. Abbreviation: A/C ledge (Aircon Ledge), PES (Private Enclosed Space), ST (Store), DB (Distribution Board).

**TYPE D1p**  
**4 - BEDROOM VISTA**  
**123.00 sqm / 1324 sqft**

#02-22

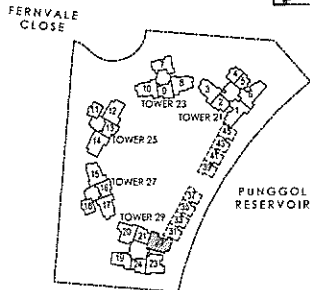
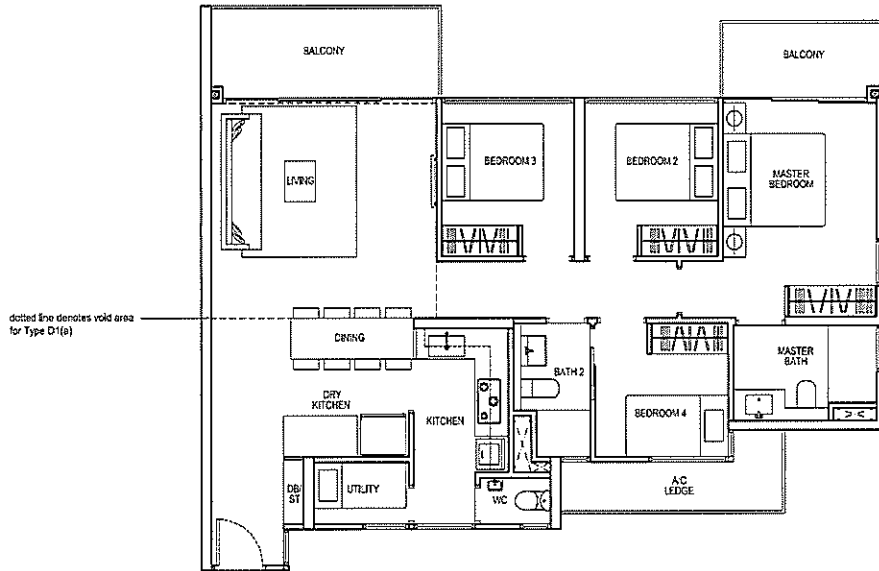


**TYPE D1**  
**4 - BEDROOM VISTA**  
**118.00 sqm / 1270 sqft**

#03-22 to #21-22

**TYPE D1(a)**  
**4 - BEDROOM VISTA**  
**137.00 sqm / 1475 sqft**  
 Inclusive of void area of 19 sqm above living

#22-22



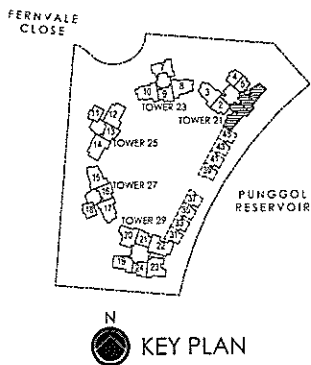
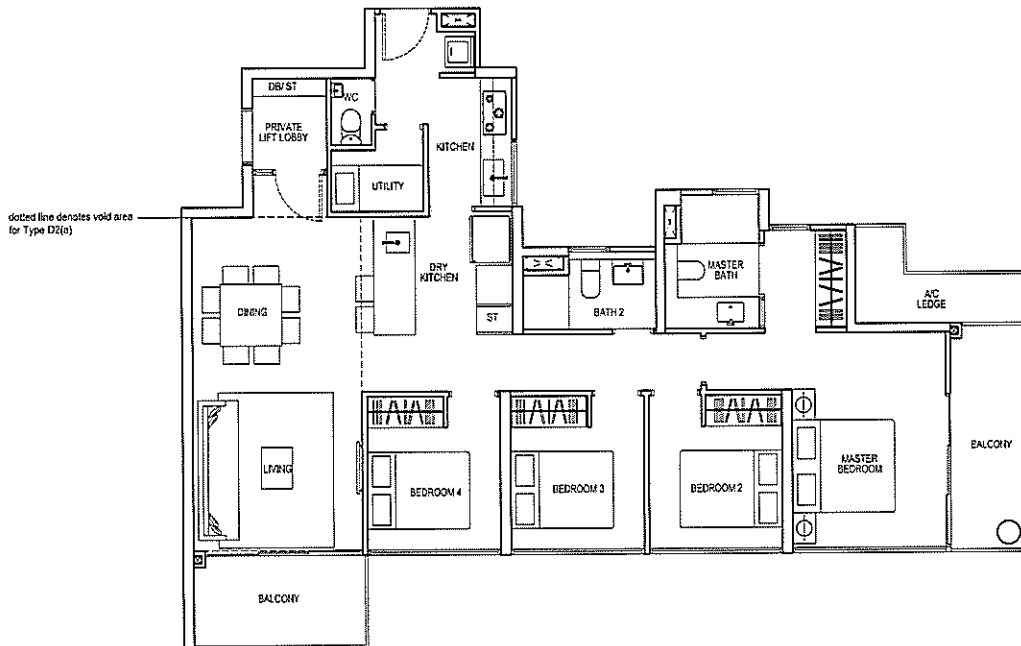
Area includes A/C ledge, balcony, PES and void area. Some units are mirror images of the apartment plans shown in the brochure. Please refer to the key plans for orientation. The plans are subject to change as may be approved by the relevant authorities. All floors areas are approximate measurements only and are subject to government resurvey. Abbreviation: A/C ledge (Airon Ledge), PES (Private Enclosed Space), ST (Store), DB (Distribution Board).

**TYPE D2**  
**4 - BEDROOM PRIVE**  
 126.00 sqm / 1356 sqft

#03-01\* to #21-01\*  
 #02-06 to #21-06

**TYPE D2(a)**  
**4 - BEDROOM PRIVE**  
 148.00 sqm / 1593 sqft  
 inclusive of void area of 22 sqm above living

#22-01\*  
 #22-06



\*Mirror image

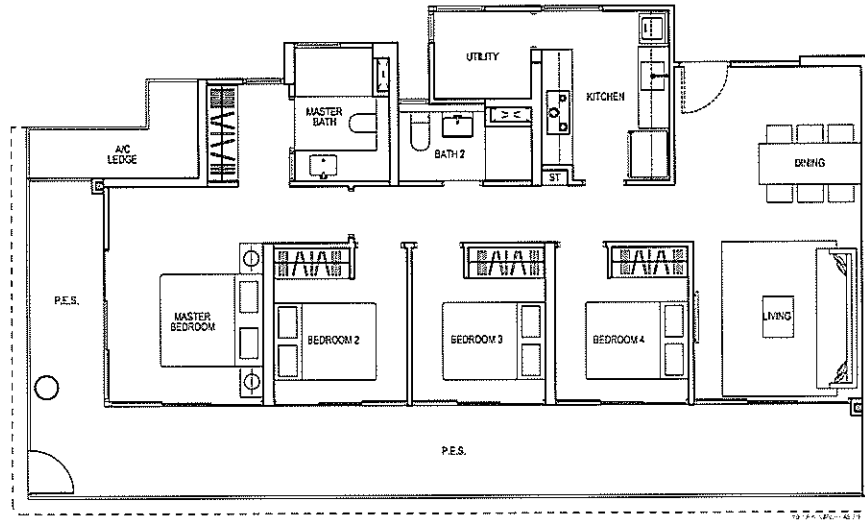


Area includes A/C ledge, balcony, PES and void area. Some units are mirror images of the apartment plans shown in the brochure. Please refer to the key plans for orientation. The plans are subject to change as may be approved by the relevant authorities. All floors areas are approximate measurements only and are subject to government resurvey. Abbreviation: A/C ledge (Aircon Ledge), PES (Private Enclosed Space), ST (Store), DB (Distribution Board).



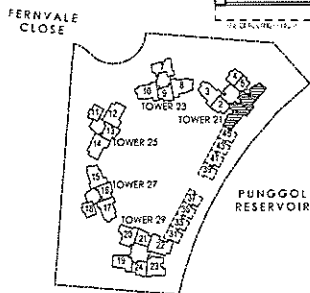
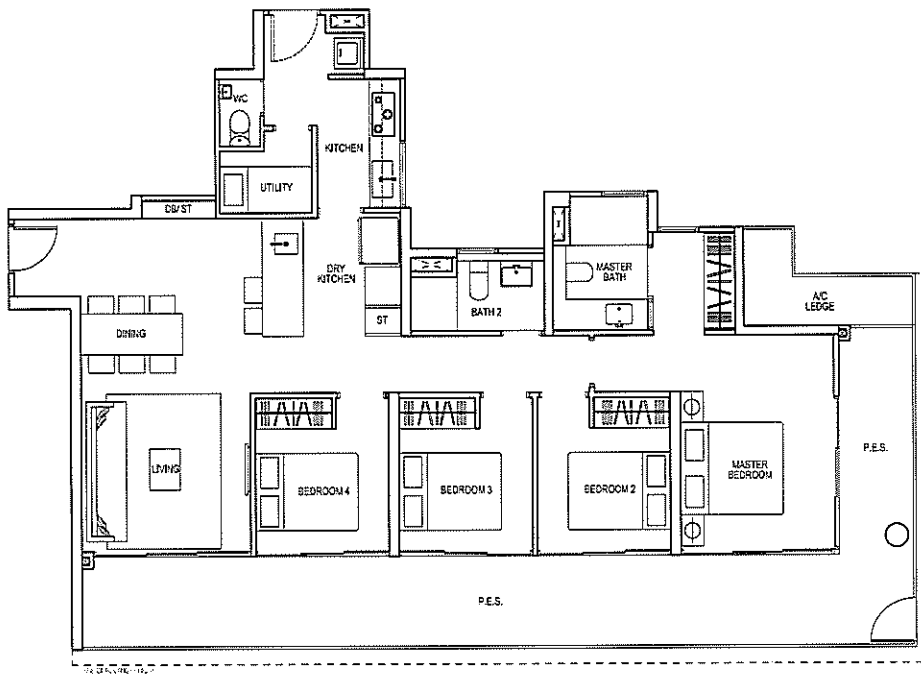
TYPE D2p  
 4 - BEDROOM PRIVE  
 139.00 sqm / 1486 sqft

#02-01



TYPE D2p1  
 4 - BEDROOM PRIVE  
 148.00 sqm / 1593 sqft

#01-06 HIGH CEILING



Area includes A/C ledge, balcony, PES and void area. Some units are mirror images of the apartment plans shown in the brochure. The plans are subject to change as may be approved by the relevant authorities. All floors areas are approximate measurements only and are subject to government resurvey. Abbreviation: A/C ledge (Aircon Ledge), PES (Private Enclosed Space), ST (Store), DB (Distribution Board).