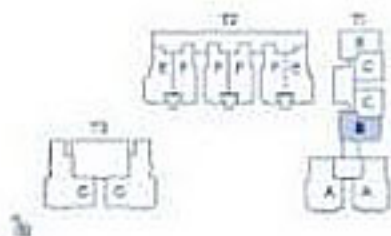


TYPE B SKY SUITE 4 - BEDROOM



Floor Area

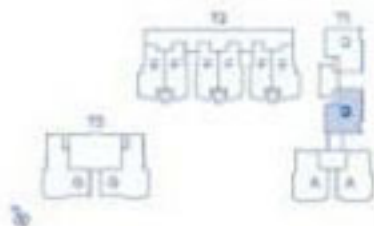
161.76 sqm. / 1741.2 sq ft.

Level 06-03 to 20-03

Level 06-06 to 20-06



TYPE D SKY BUNGALOW 4 - BEDROOM



Floor Area
258.83 sqm. / 2786.0 sq ft.

Level 22-03 to 40-03
Level 22-03A to 40-03A



TYPE E SKY DUPLEX SUITE WITH POOL
3 - BEDROOM + FAMILY



Floor Area
 328.08 sqm. / 3531.4 sq ft.

Level 06-01 to 36-01
 Level 06-06 to 36-06

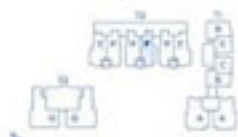


LOWER DUPLEX



UPPER DUPLEX

**TYPE F SKY DUPLEX SUITE
3 - BEDROOM + FAMILY**



Floor Area
313.52 sqm. / 3374.7 sq ft.

Level 06-02 to 36-02

Level 06-03 to 18-03

Level 22-03 to 36-03

Level 06-03A to 18-03A

Level 22-03A to 36-03A

Level 06-05 to 36-05

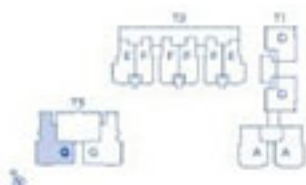


LOWER DUPLEX



UPPER DUPLEX

TYPE G SKY VILLA WITH POOL
4 - BEDROOM + FAMILY



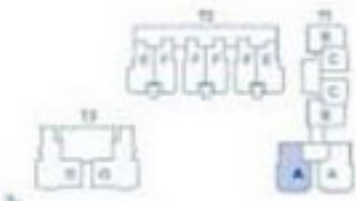
Floor Area
415.48 sqm. / 4472.2 sq ft.

Level 06-01 to 20-01
Level 22-01 to 41-01

Level 06-02 to 20-02
Level 22-02 to 41-02



TYPE A SKY BUNGALOW WITH POOL
4 - BEDROOM



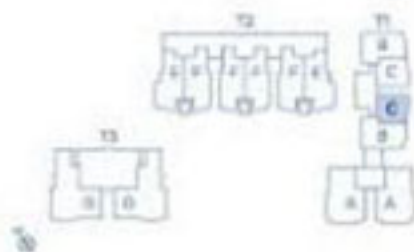
Floor Area
 257.46 sqm. / 2771.3 sq ft.

Level 06-01 to 20-01
 Level 22-01 to 45-01

Level 06-02 to 20-02
 Level 22-02 to 36-02
 Level 39-02 to 45-02



TYPE C SKY SUITE 3 - BEDROOM



Floor Area

123.97 sqm. / 1334.4 sq ft.

Level 06-3A to 20-03A

Level 06-05 to 20-05

