

impossible

possible

impossible


possible

impossible

possible...



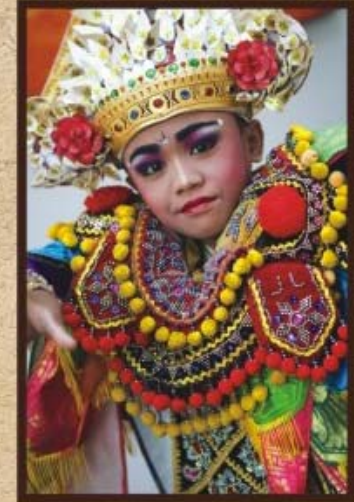
*... impossible beach*



Surrender to  
a **calming sea breeze**  
in a refuge of  
timeless indulgence.

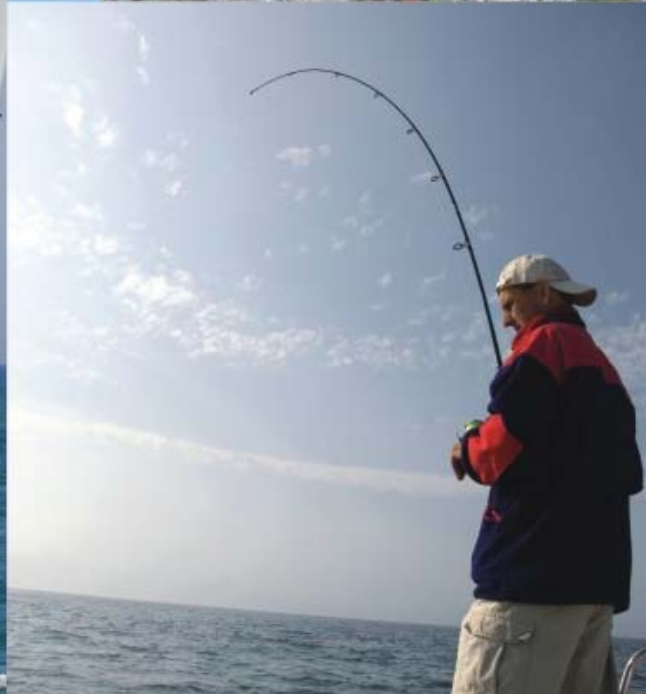
Download & Enjoyable routine - 4 pm





The enchanting island known by many names – Island of the Gods, the island of a thousand temples, and the island of paradise. With its natural beauty, dazzling culture and local culinary taste, **Bali** is always magnetizing for both serenity seekers and avid holiday travelers. A fusion of the indigenous natural elements and warmth of local culture provides a unique welcome that is always longed for by holiday seekers. This is a place where the elements of modernity and tradition blend harmoniously,

harmonious living





**Impossible Beach**, where surfers challenge its wild waves, limestone cliffs invite climber and exotic caves soothe your soul and permeate deeply. Located adjacent to Dreamland Beach, these area are targeted by keen investors for their prime location that adds a natural sensation to your holiday experience. Only a 20 minute scenic ride from Ngurah Rai airport and 25 minute drive from Kuta, it is really an ideal premium destination.

a journey that permeates your soul







A masterpiece of hotel design sits on the edge of the cliff.  
1,7 hectares of land area with sensational commanding views of the blue ocean.  
Consisting of 4 types of accommodations await discerning buyers:  
Oceanfront Villa, Oceanfront Condo, Ocean-view Condominiums, and Garden Villas.  
This project will be operated by Anantara Hotels-Resorts-Spa.

masterpiece on the cliff

aerial photo

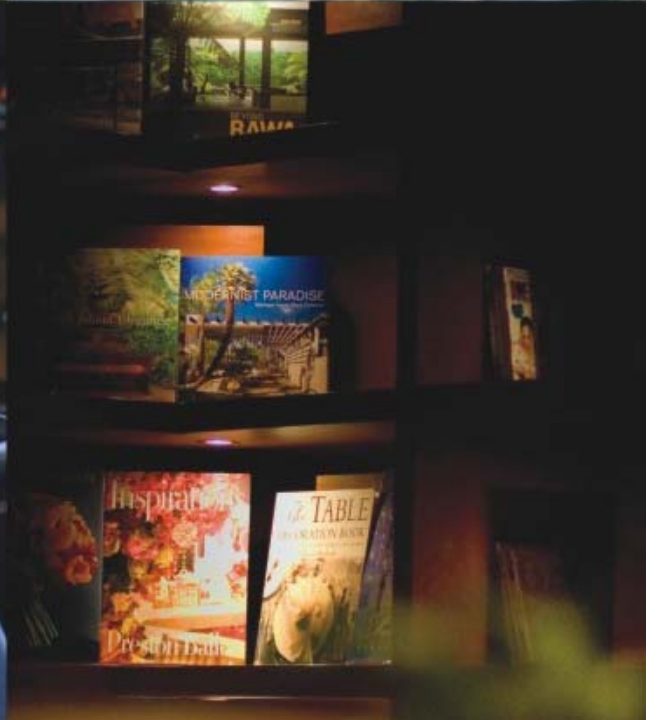


Impossible beach



North

master plan





## waves of facilities

Anantara Uluwatu is an integrated resort, where anything can be arranged in one place, simply enjoy your sun-bathing and exploring the times with our unique activities without hassling your time.

- ◆ Cliff edge infinite swimming pool
- ◆ Three restaurant (Italian, Japanese, Western)
- ◆ Lounge bar
- ◆ Library
- ◆ Children day care
- ◆ Wedding hall
- ◆ Meeting room
- ◆ Gymnasium
- ◆ Secret dining cave
- ◆ Spa villas and cliff-front spa cabana
- ◆ Drugstore
- ◆ Mini theater

if you think, it is Impossible  
to get this kind of place  
on the Island of Gods,  
think again...

At Impossible Beach,  
we create possibilities.





# Oceanfront Villa

Undeniable luxury villa offering an infinite journey for your self-statement. Each of these unit has infinite pool and its sea-horizon as the show, indefinitely the best choice of unrivalled investment.

## 3 Bedroom villa

Lower plan



Upper plan



- A - Verandah
- B - Living room
- C - Pool
- D - Dining room
- E - Kitchen
- F - Second Bedroom
- G - Master Bedroom

- H - Balcony
- I - Third Bedroom
- J - Balcony

## 2 Bedroom villa



- A - Verandah
- B - Living room
- C - Dining room
- D - Kitchen

- E - Balcony
- F - Pool
- G - Master Bedroom
- H - Second Bedroom



Inner-cross section





Oceanfront Villa



Oceanfront Villa, Master Bedroom



Ocean-cross section



Oceanfront Villa, Master Bedroom





## Oceanfront Condo

Rows of modern minimalist architecture that compiling exclusive condominium with its blue ocean spread away as the master of show. The interior designed modernly with its fully-furnished amenities representing a smart choice of investment. Certainly will retain a high-yield return and value both for investor and travelers of fun and serene-seeker.

### Oceanfront Condo

- A - Bed area
- B - Living area
- C - Bath area
- D - Balcony
- E - Terrace
- F - Pool/vegetation (seaside type)









Inner-cross section



left page:  
Interior rendering



surrendered by calming sea-breeze  
a refuge of timeless indulgence



# Ocean-view Condominium

Condominium building is a 4-storey building with 40 suites and 2 duplex penthouse suites. Each unit comes in a modern minimalist interior and furnished by fine amenities offering a smart-elegant spacious layout. The suite has 84 m<sup>2</sup> and 336 m<sup>2</sup> for the penthouse, bring this condominium as an invitation of valuable investment.

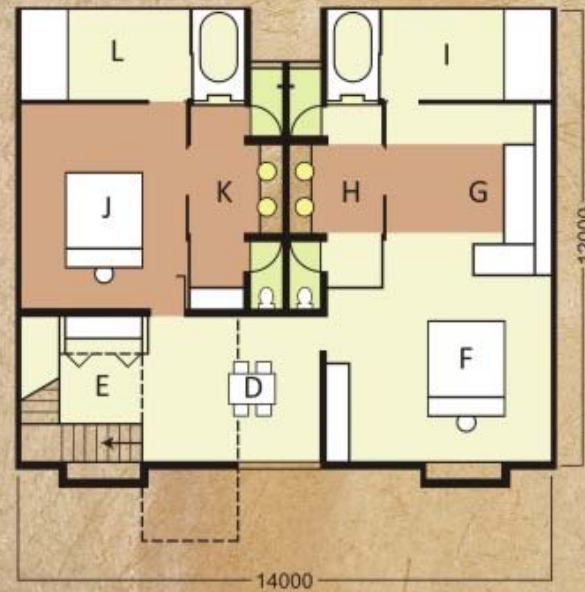
## Suites



- A - Bed area
- B - Living area
- C - Bath area
- D - Balcony

## Penthouse

### Lower Plan



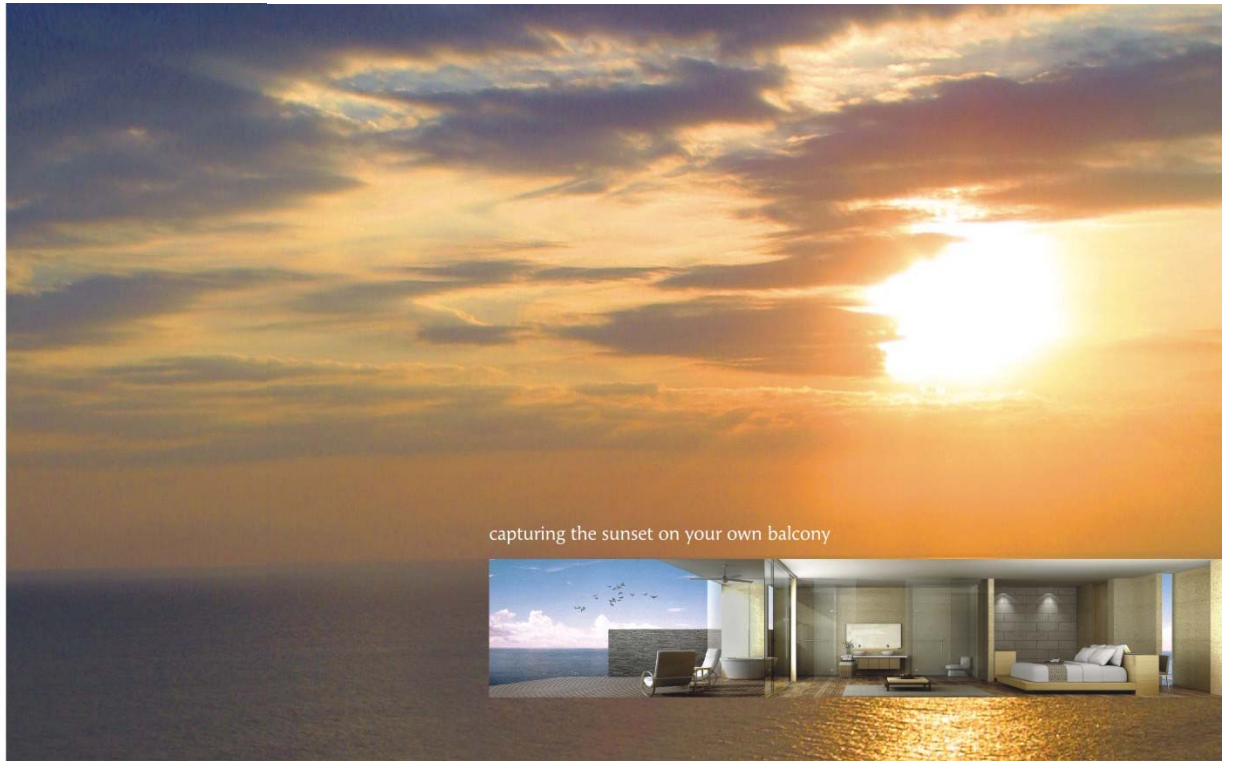
- A - Foyer
- B - Living area
- C - Pool
- D - Dining room
- E - Kitchen
- F - Master Bedroom
- G - Main Living room
- H - Main Bath area
- I - Main balcony
- J - Bedroom
- K - Bath area
- L - Balcony

### Upper Plan



- A - Foyer
- B - Living area
- C - Pool
- D - Dining room
- E - Kitchen
- F - Master Bedroom
- G - Main Living room
- H - Main Bath area
- I - Main balcony
- J - Bedroom
- K - Bath area
- L - Balcony
- M - Upper balcony





capturing the sunset on your own balcony



# Garden View Villa

This is one of the unique accommodation type at Anantara Uluwatu. The site offering the warm of sea-breeze but also the greenery of lush tropical garden, a typical view of Bali's highland area. Compiled of 7 exclusive garden-view villas divided into 3 and 2 bedrooms offering spacious landscape where you may sun-bathing flickering under frangipani's foliage.

## 3 Bedroom villa



- A - Verandah
- B - Living room
- C - Pool
- D - Dining room
- E - Kitchen
- F - Second Bedroom
- G - Master Bedroom

- H - Balcony
- I - Third Bedroom
- J - Balcony

## 2 Bedroom villa



- A - Verandah
- B - Living room
- C - Dining room
- D - Kitchen

- E - Balcony
- F - Pool
- G - Master Bedroom
- H - Second Bedroom







Garden view villa



Pampered by  
**high quality**  
amenities







Anantara

HOTELS • RESORTS • SPAS

The Anantara Experience is an immersion in the culture, heritage and natural beauty of some of the most enchanting destinations in the world. Follow us on a journey rich with local colour, luxurious surroundings, gracious service and discover the art of the Anantara Experience.

Freedom to explore. An invitation to imagine

# The Consultant

## Architect

Denton Corker Marshall  
PT. Duta Cermat Mandiri

## Interior & Landscape

Denton Corker Marshall  
PT. Duta Cermat Mandiri

## Graphic Consultant


SYNDICATE Design  
PT. Syndicate & Laras Media

## Photographer

Hans T. Winata  
Dreamland & Impossible Coastline  
(Inside front & back cover)



**DISCLAIMERS:** While every reasonable care has been taken during preparation of this brochure, the developer and its agents cannot be held responsible for any inaccuracies. All statements are believed to be correct but are not regarded as statements or representation of fact. All information and specifications are current at time of print are subject to changes as may be required and cannot form part of an offer or contract. All plans are subject to any amendments approved by relevant authority or other related parties. Rendering and illustrations are artist's impressions only and cannot be regarded as representation of fact. The size and dimension are approximate measurements using equipment/criteria and method determined by the developer.

A wide-angle photograph of a coastal landscape. On the left, a dark, rocky coastline with sparse vegetation meets the sea. The ocean is a deep blue, with white foam from waves breaking onto a sandy beach. The sky is filled with heavy, grey clouds, suggesting an overcast day. The overall mood is serene and somewhat somber.

Surrender to  
a **calming sea breeze**  
in a refuge of  
timeless indulgence.

Dreamland & Impossible coastline. 4 pm

## PT TIARA INTI MULIA

The Belleza Shoping Arcade suites 130-131  
Jl. Letjen Soepono No.34, Arteri Permata Hijau. Jakarta, Indonesia  
Tel +62 21 2567 5505 | Fax +62 21 2567 5572  
Email: sales.director@balianantarauluwatu.com

[www.balianantarauluwatu.com](http://www.balianantarauluwatu.com)