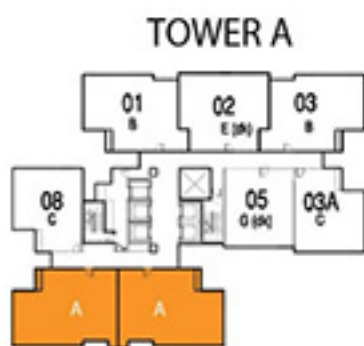
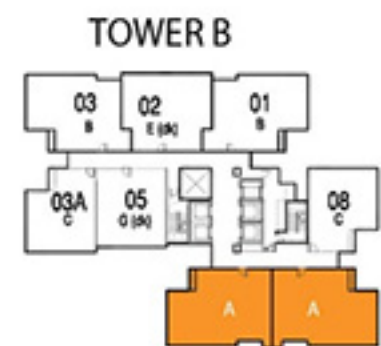


## TYPE A

(3 BR)  
 106.37 M<sup>2</sup>  
 1145 FT<sup>2</sup>



PLAN - LEVEL 21 ~ 29  
 LEVEL 32 ~ 38





## TYPE H

(1 BR)  
 47.85 M<sup>2</sup>  
 515 FT<sup>2</sup>



PLAN - LEVEL 9 ~ 20







## TYPE J

(1 BR)

53.37 M<sup>2</sup>

574 FT<sup>2</sup>



PLAN - LEVEL 9 ~ 20





## TYPE B

(3 BR)  
 97.46 M<sup>2</sup>  
 1049 FT<sup>2</sup>





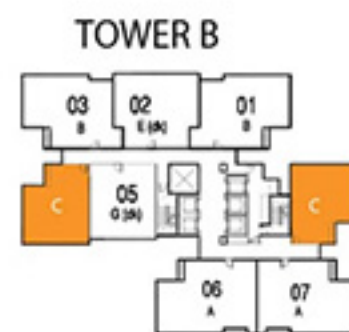


## TYPE C

(2 BR)  
73.58 M<sup>2</sup>  
792 FT<sup>2</sup>



PLAN - LEVEL 21 ~ 29  
LEVEL 32 ~ 38



PLAN - LEVEL 30 ~ 31





**TYPE C(dk)**

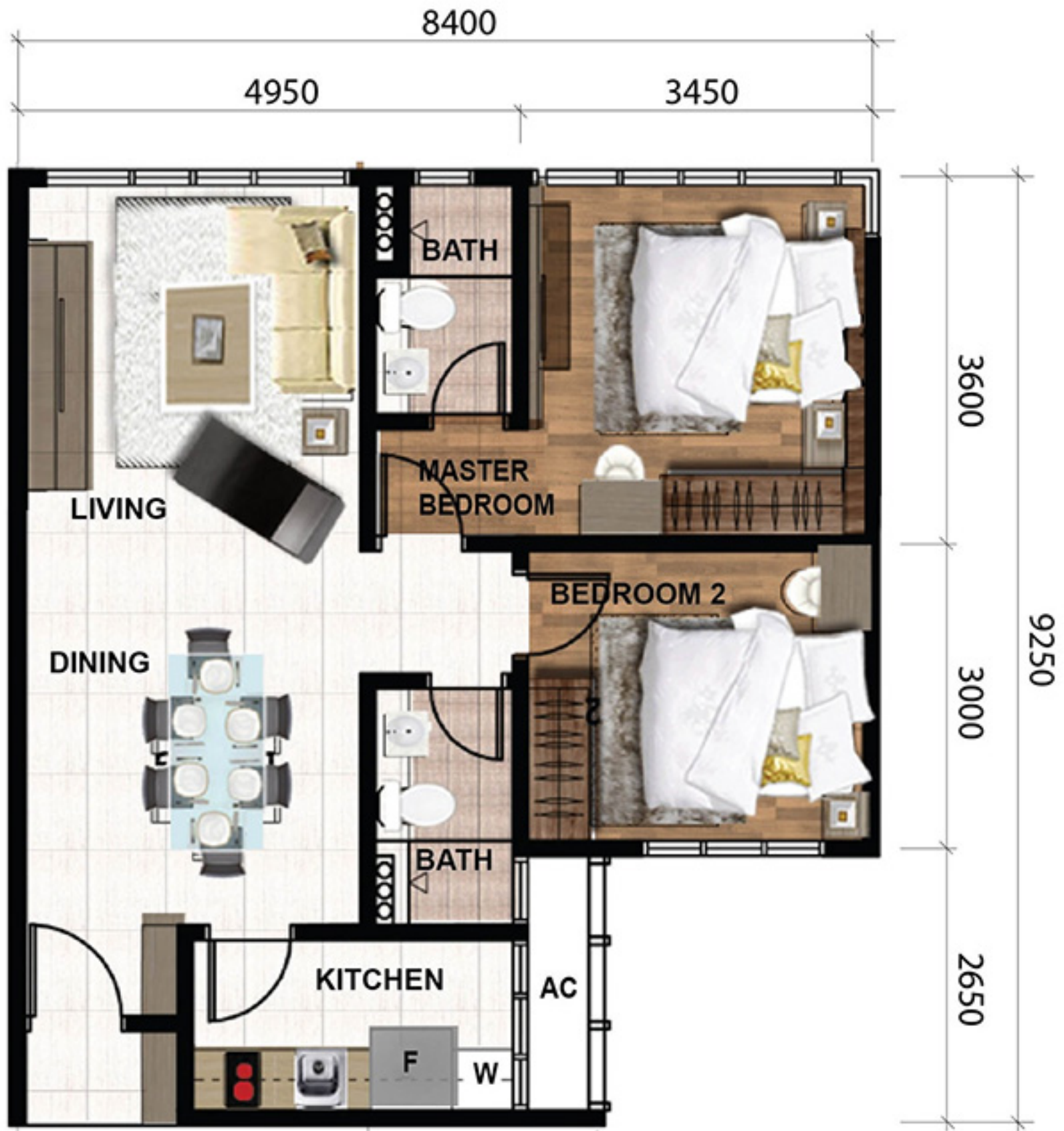
(2 BR)  
 79.62 M<sup>2</sup>  
 857 FT<sup>2</sup>



PLAN - LEVEL 9 ~ 20







## TYPE D

(2 BR)

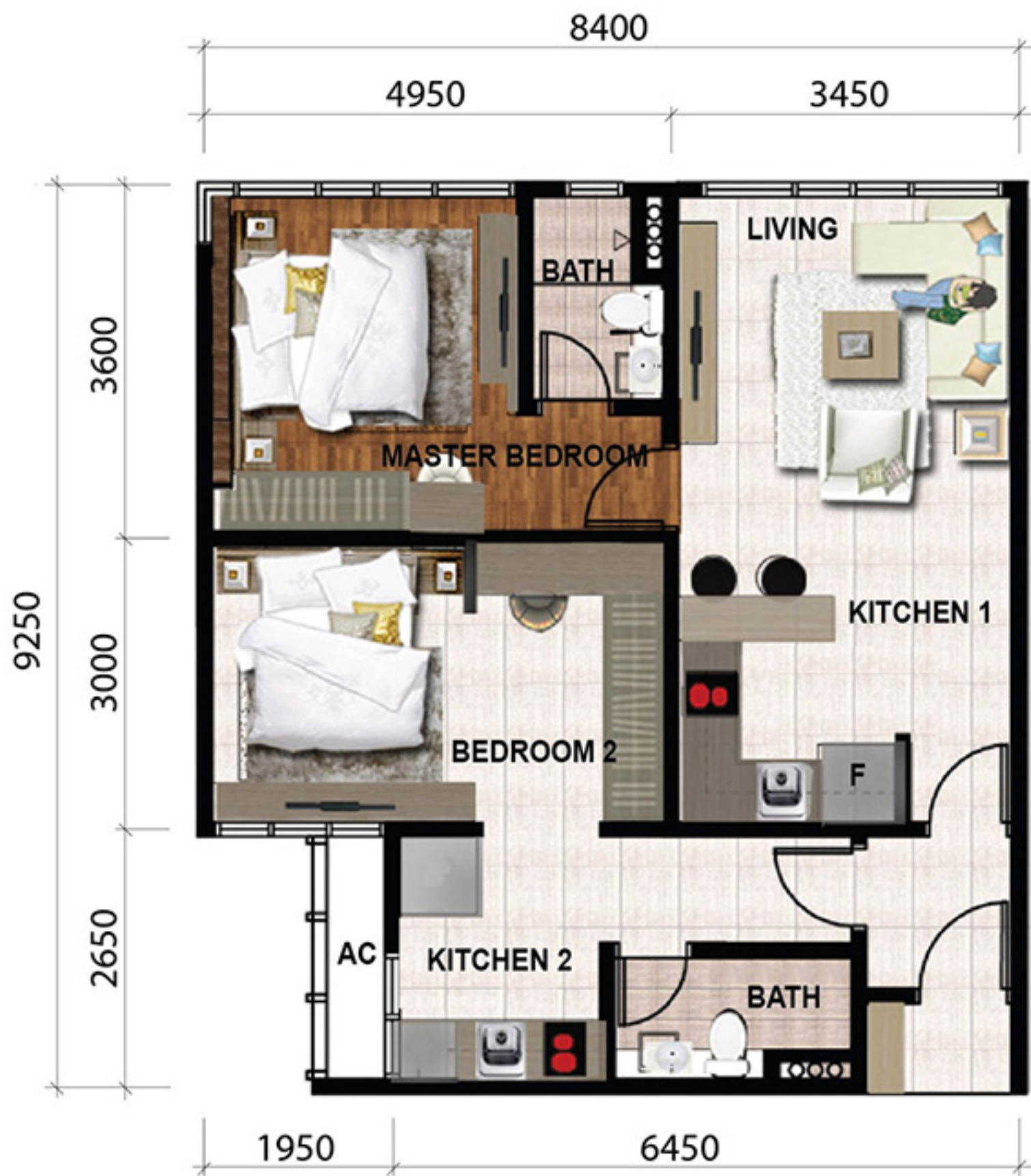
68.56 M<sup>2</sup>

738 FT<sup>2</sup>



PLAN - LEVEL 9 ~ 20



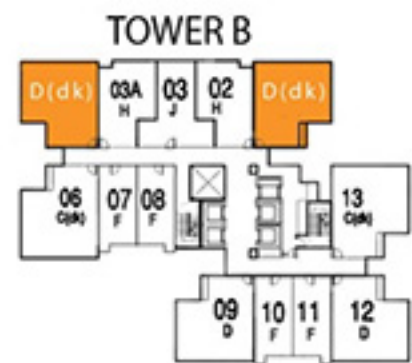


**TYPE D(dk)**

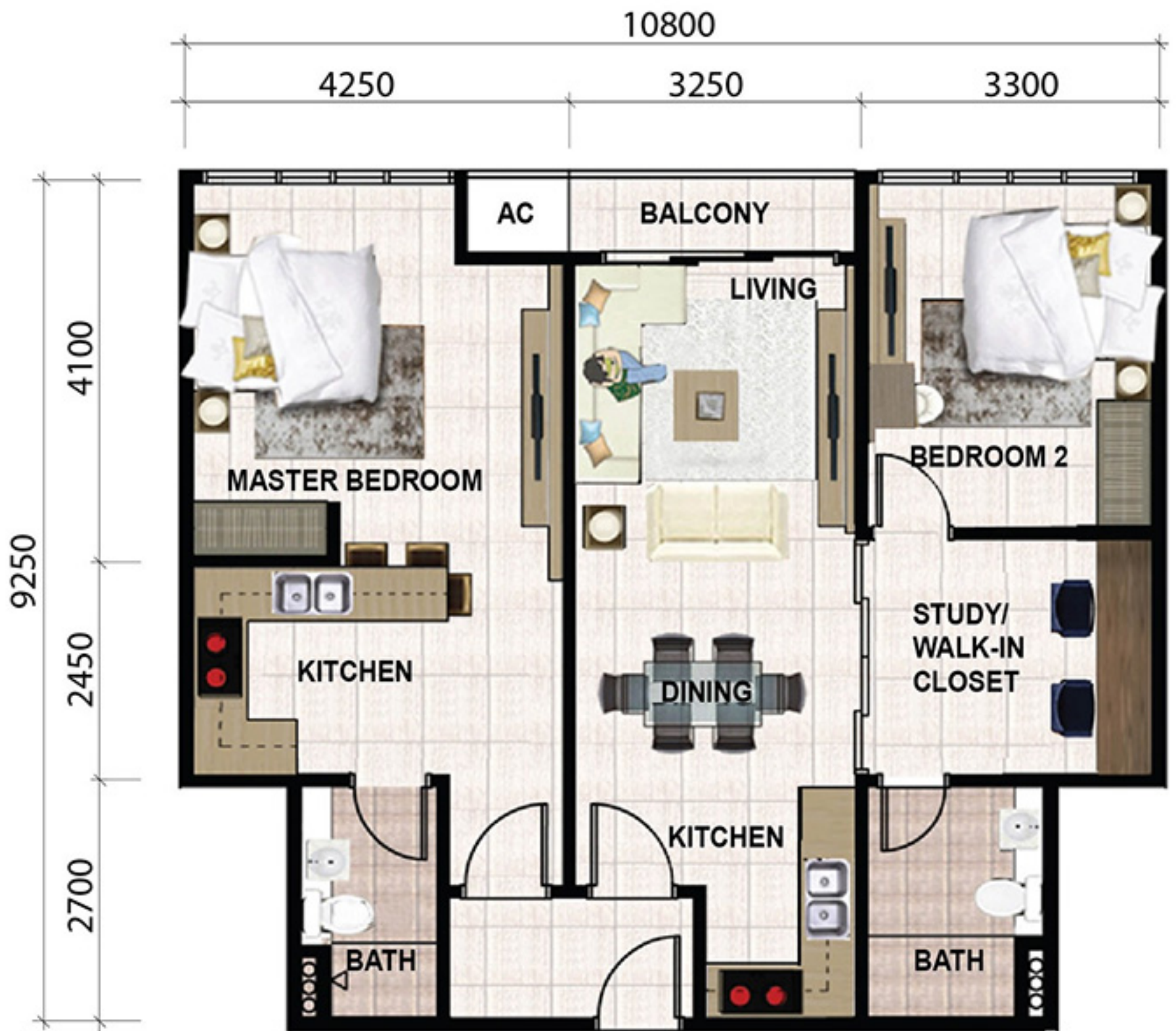
(2 BR)  
 72.46 M<sup>2</sup>  
 780 FT<sup>2</sup>



PLAN - LEVEL 9 ~ 20





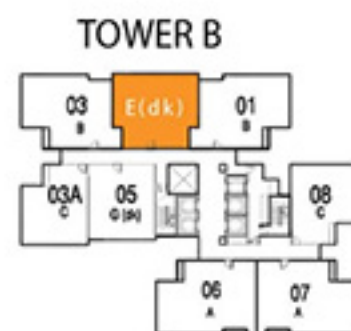


## TYPE E(dk)

(2 BR)  
 93.37 M<sup>2</sup>  
 1005 FT<sup>2</sup>



PLAN - LEVEL 21 ~ 29  
 LEVEL 32 ~ 38



PLAN - LEVEL 30 ~ 31





**TYPE F**  
 (STUDIO)  
 37.16 M<sup>2</sup>  
 400 FT<sup>2</sup>



PLAN - LEVEL 9 ~ 20





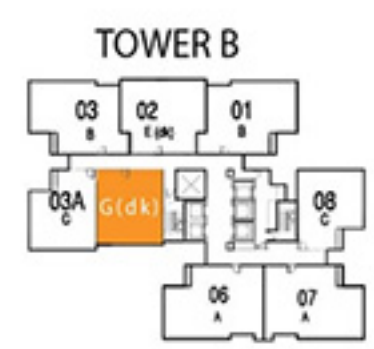


**TYPE G(dk)**

(2 BR)  
 77.48 M<sup>2</sup>  
 834 FT<sup>2</sup>



PLAN - LEVEL 21 ~ 29  
 LEVEL 32 ~ 38



PLAN - LEVEL 30 ~ 31

