

The  
**BRIDGE**



COMMERCIAL 商铺 • RESIDENTIAL 住宅 • SOHO 居家办公室

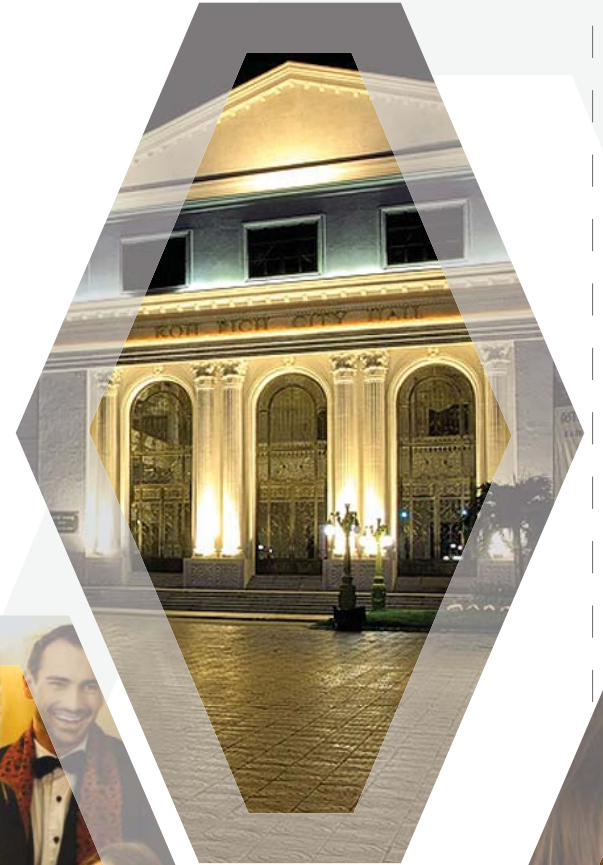
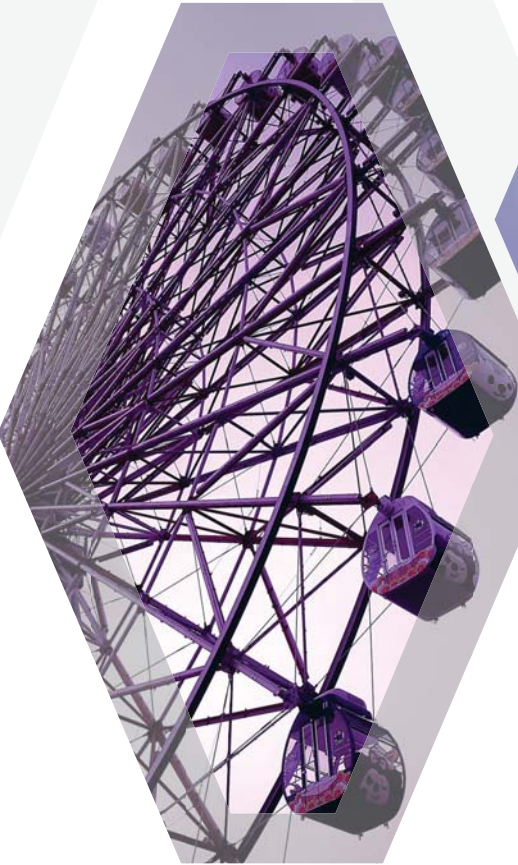
*LIVE AND WORK IN ULTIMATE CONVENIENCE WITH EVERYTHING UNDER ONE ROOF AT THE BRIDGE*

THE BRIDGE一站式商住中心将带给您全方位的尊贵生活享受









Situated just 2 minutes away from Preah Sihanouk Boulevard, right in the heart of Cambodia's capital Phnom Penh, The Bridge offers discerning individuals units for shops, homes and SOHO (small office home office).

Historical buildings, entertainment options and shopping malls are all within easy access from The Bridge. Located nearby you will find the National Monument, the National Assembly Building, the Ministry Of Foreign Affairs, the Australian and Russian Embassies as well as the two main five-star hotels in Phnom Penh. The Bridge is just five minutes away from Diamond Island and is blessed with 360-degree views of Bassac River, Diamond Island and the beautiful city of Phnom Penh.

The Bridge 坐落在柬埔寨首都金边的中心地带，离 Preah Sihanouk 大道仅2分钟距离，地理位置适中。项目经过精心打造，推出集合商铺、住家、和家居办公室于一体的商住中心。

The Bridge 周边紧密环绕众多历史文化建筑，娱乐设施和购物中心；其中包括国家纪念碑，国民议会大楼，外交部，澳大利亚和俄罗斯大使馆，5星级酒店。

The Bridge 坐望Bassac河，离Diamond Island (宝石岛) 仅5分钟车程。







The magnificent facade of The Bridge consists of two distinct and impressive towers that are interlinked by two skybridges which offer seamless access to all that this development offers.

建筑外观现代简洁，空中连廊让两座主楼无缝连接，大盘气质彰显无遗。











artist's impression

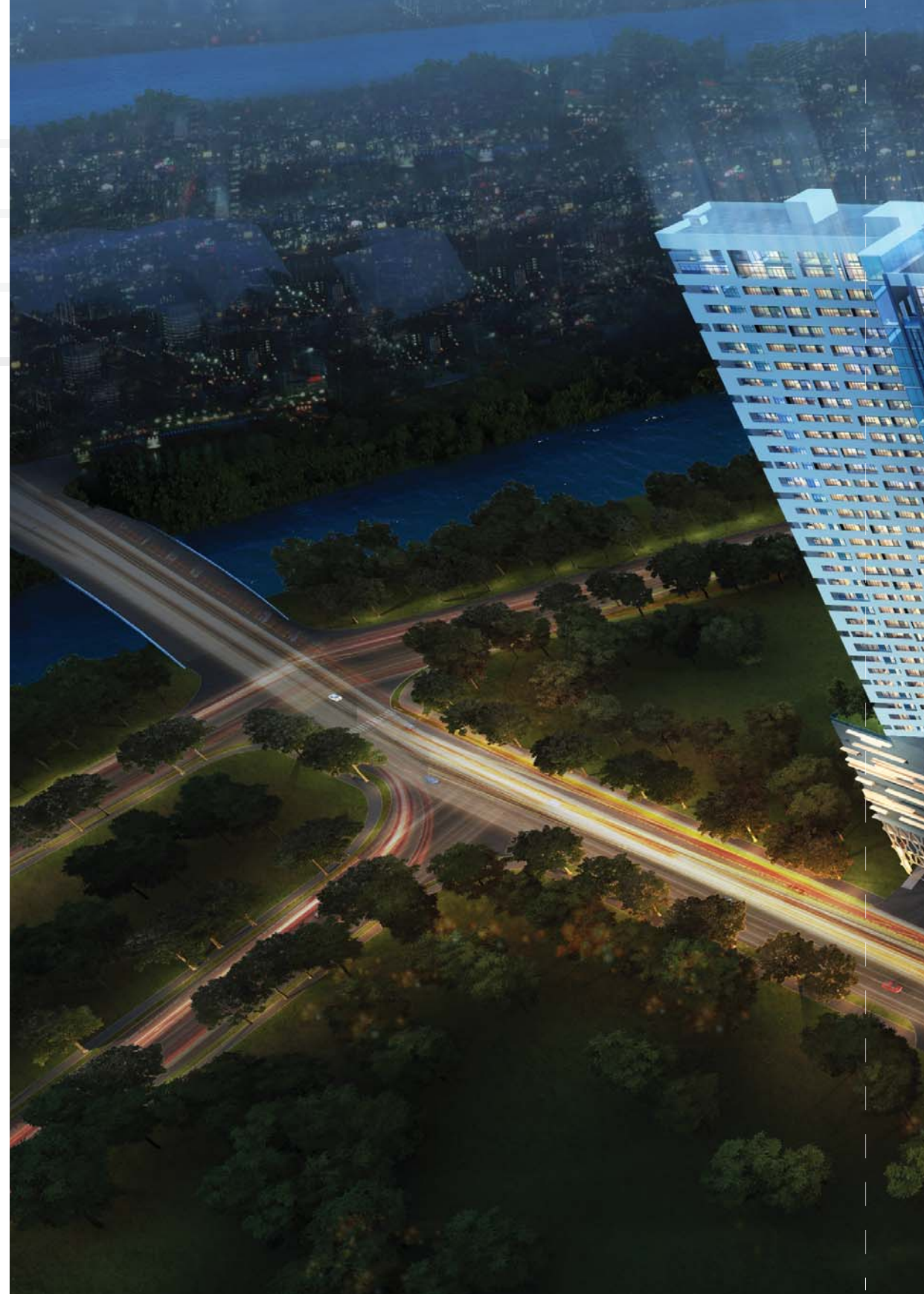


artist's impression

The Bridge up to 45 storeys high, comprises of commercial and residential spaces. Five levels of retail space inclusive of 2-storey shophouses available for shopping, entertaining and dining. Stellar apartments, consisting of 1, 2+study and 3 bedrooms units, as well as penthouses. SOHO (Small Office Home Office) units offer a combination of live, work & play.

The Bridge 是集商业、住宅、居家办公室为一体的具有良好投资价值的项目。

**购物商场** 一站式的特色购物中心，融入众多时尚精品、美食餐饮、娱乐设施、生活超市等  
**住宅** 精心推出1+1、2+1、3房和阁楼单位，设计大方优雅  
**家居办公室** 专为城市中的精英人群度身定制，灵活小巧，随时随地畅享生活、工作、娱乐











Consists of five levels of retail space for all types of shop spaces, from 2-storey shop-houses, shop units, restaurants and food courts to supermarkets, banks and stores with a high four-storey central atrium spine and ample secured carparking.

购物商场配有充足的停车位，让购物者毫无后顾之忧。高而宽敞的中庭广场，明亮舒适。在购物的同时带来愉悦的自然体验。



















Modern facilities such as Swimming Pool, Gymnasium, Children's Playground, Function Hall as well as a Landscape Skydeck at the 13th Storey. Round the clock security and secure carpark are also provided.

24小时全天候安全监控车库、位于13楼的空中花园、泳池、健身室、儿童游乐场、多功能区等休闲设施，让您自由放空心情，足不出户体验休闲生活。

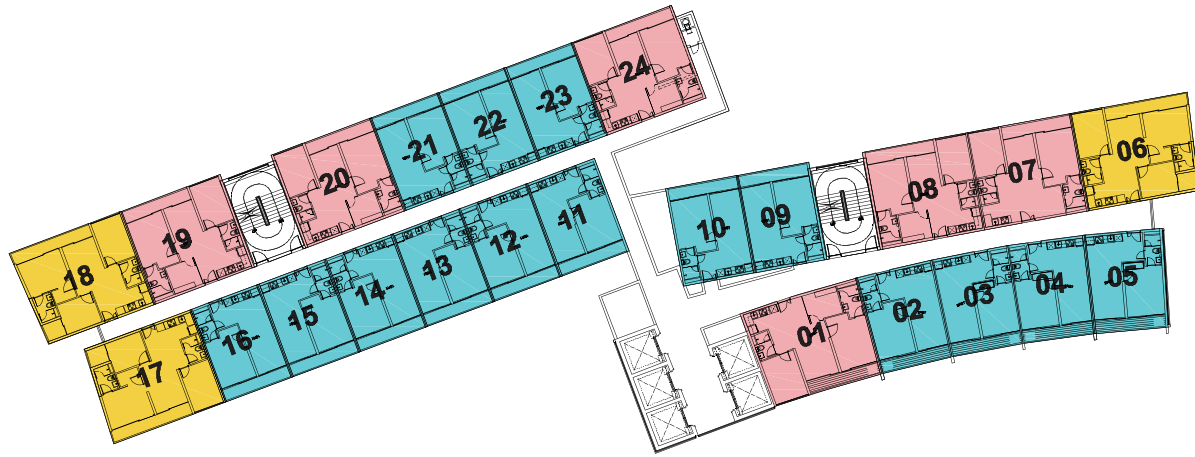






**TYPICAL TOWER 1 APARTMENT PLAN (LEVEL 14 TO 19, 21 TO 36, 38 TO 44)**

典型住宅单位楼层平面图 (第14层 - 19层, 21层 - 36层, 38层 - 44层)



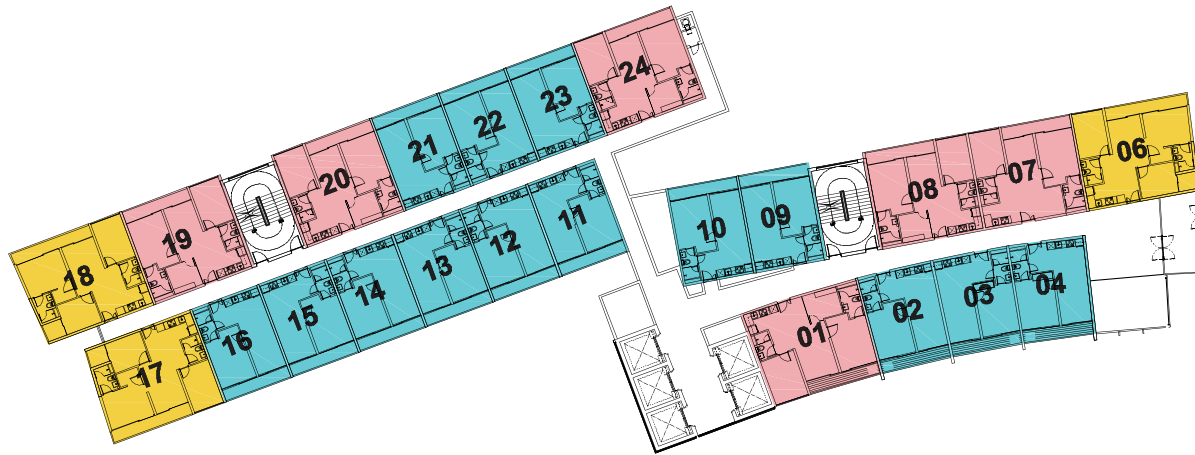
**TYPICAL TOWER 2 SOHO PLAN (LEVEL 14 TO 17, 20 TO 31, 34 TO 39)**

居家办公室楼层平面图 (第14层 - 17层, 20层 - 31层和34层 - 39层)



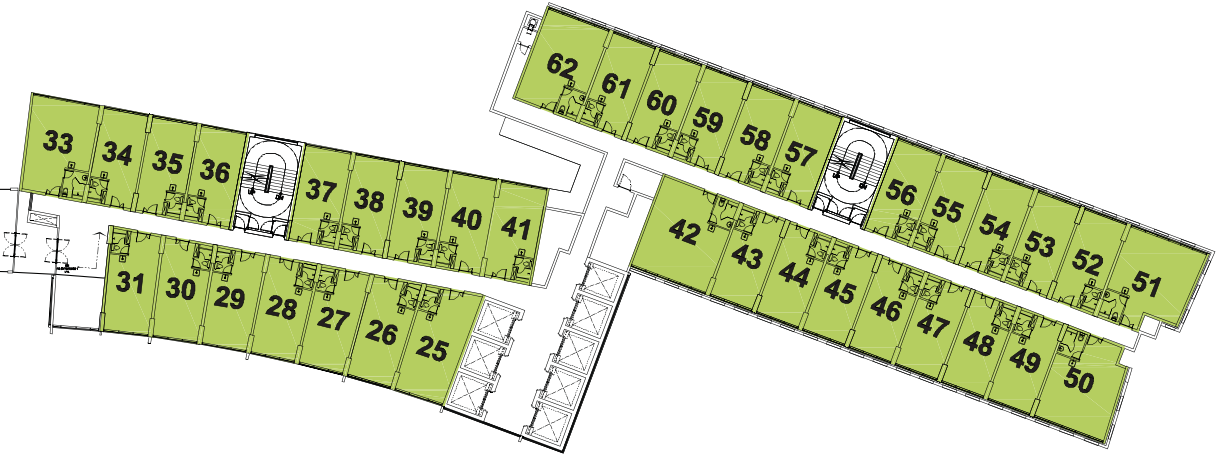
**TYPICAL TOWER 1 APARTMENT PLAN (LEVEL 20 & 37)**

典型住宅单位楼层平面图 (第20层和37层)







**TYPICAL TOWER 2 SOHO PLAN (LEVEL 18,19, 32 & 33)**

居家办公室楼层平面图 (第18层, 19层, 32层和33层)



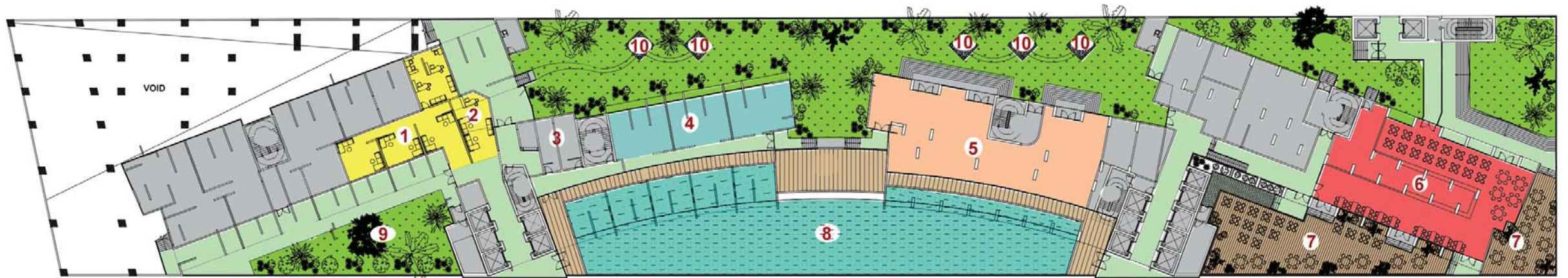
**LEGEND:**

- |   |  |
|---|--|
|  1 Bedroom<br>1 房式               |  3 Bedroom<br>3 房式  |
|  2 Bedroom + Study<br>2 房式 + 书房区 |  SOHO Unit<br>居家办公室 |





RECREATION DECK FOR RESIDENTIAL UNIT 休闲设施 (给住宅单位)



- 1 READING & LOUNGING ROOM 阅读与休闲室
- 2 CONCIERGE AREA 接待区
- 3 RESTROOM 卫生间
- 4 GYM, STEAM ROOM, JACUZZI 健身室, 蒸汽浴室, 按摩浴池
- 5 FUNCTION AREA 多用途区

- 6 F & B 餐饮
- 7 OUTDOOR DINING AREA 户外用餐区
- 8 SWIMMING POOL 游泳池
- 9 CONDO PLAYGROUND 游乐场
- 10 BBQ PAVILION 烧烤区



13TH FLOOR PLAN





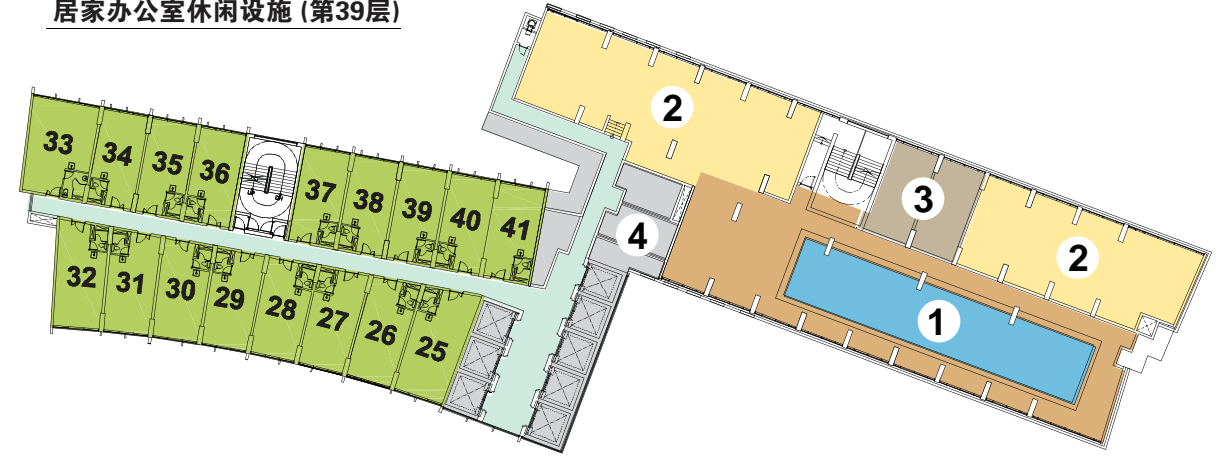
**TOWER 1 PENTHOUSE LOWER LEVEL (LEVEL 45)**

阁楼公寓底层 (第45层)



**TOWER 2 SOHO RECREATION DECK (LEVEL 39)**

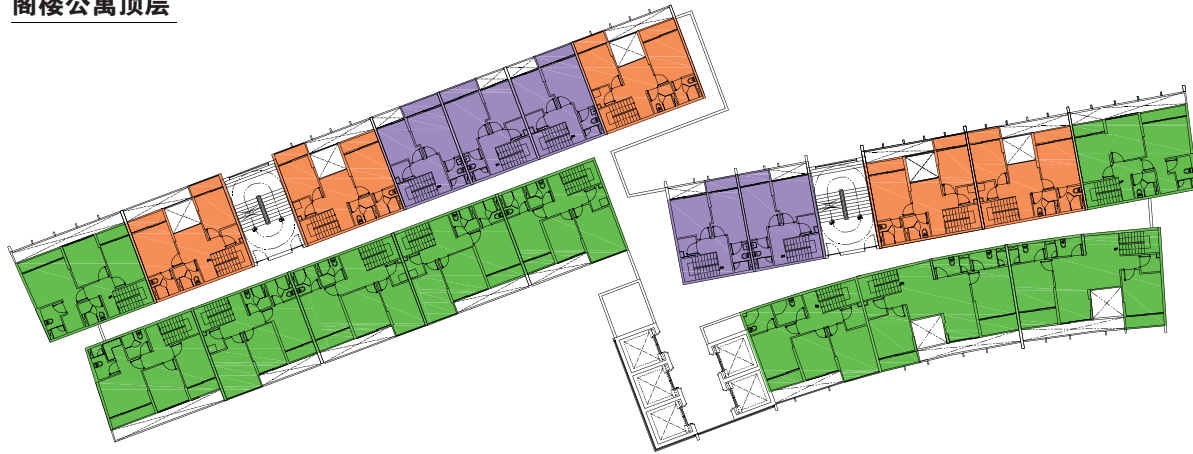
居家办公室休闲设施 (第39层)



- 1 SWIMMING POOL 游泳池
- 2 GYM, STEAM ROOM, JACUZZI 健身室, 蒸汽浴室, 按摩浴池
- 3 CHANGING ROOM 更换间
- 4 RESTROOM 卫生间

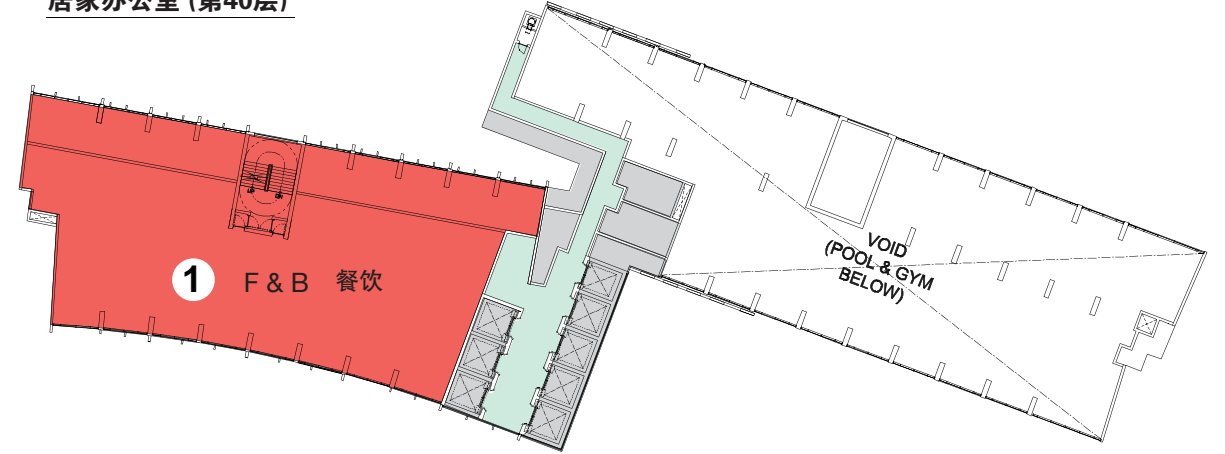
**TOWER 1 PENTHOUSE UPPER LEVEL**

阁楼公寓顶层



**TOWER 2 SOHO (LEVEL 40)**

居家办公室 (第40层)



**LEGEND:**

**PENTHOUSE 阁楼公寓**

2 Bedroom  
2 房式

3 Bedroom  
3 房式

4 Bedroom  
4 房式

SOHO Unit  
居家办公室







# The BRIDGE

A Prestigious Project Jointly  
Developed By



Oxley International Holdings Pte Ltd



Worldbridge Land (Cambodia) Co., Ltd.

#### Disclaimer

While reasonable care has been taken in the preparation of this brochure, the developer cannot be held responsible for any inaccuracies or omissions. The statements, information and depictions shall not be regarded or relied upon as statements or representations of facts, and are subject to such changes as may be required by the developer or the relevant authorities, and cannot form part of an offer or contract. Visual representations, digital images, models, showflat, illustrations, photographs, pictures, drawings, displays and art renderings are artist's impressions only (which serve only to give an approximate idea of the project), and cannot be regarded as representation of facts. All plans and layouts are not to scale and are subject to change/amendments as may be directed or approved by the relevant authorities or required by the architect. The floor areas indicated in the brochure are approximate measurements only and are subject to final survey. The information included in this brochure is accurate as at the time of printing and there may be changes subsequently as may be required by the architects and relevant authorities. For the avoidance of any doubt, the information herein shall not form part of the Option or Sales and Purchase Agreement governing the terms and conditions of the sale and purchase of the unit.



