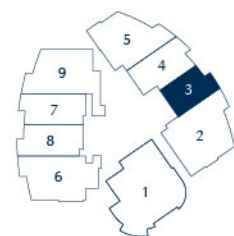
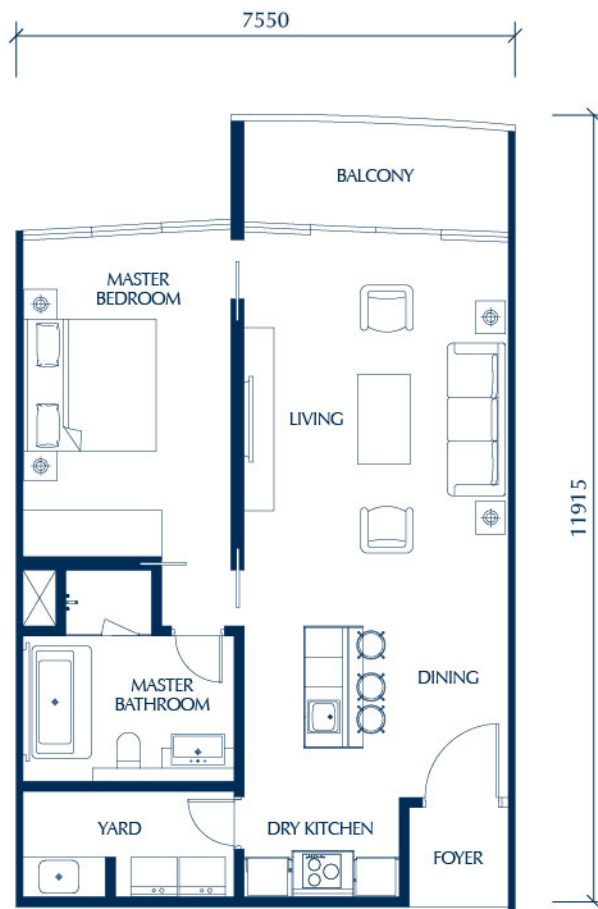


TYPE S1

Built-up area: 938 sq ft

1 bedroom

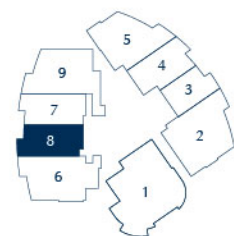
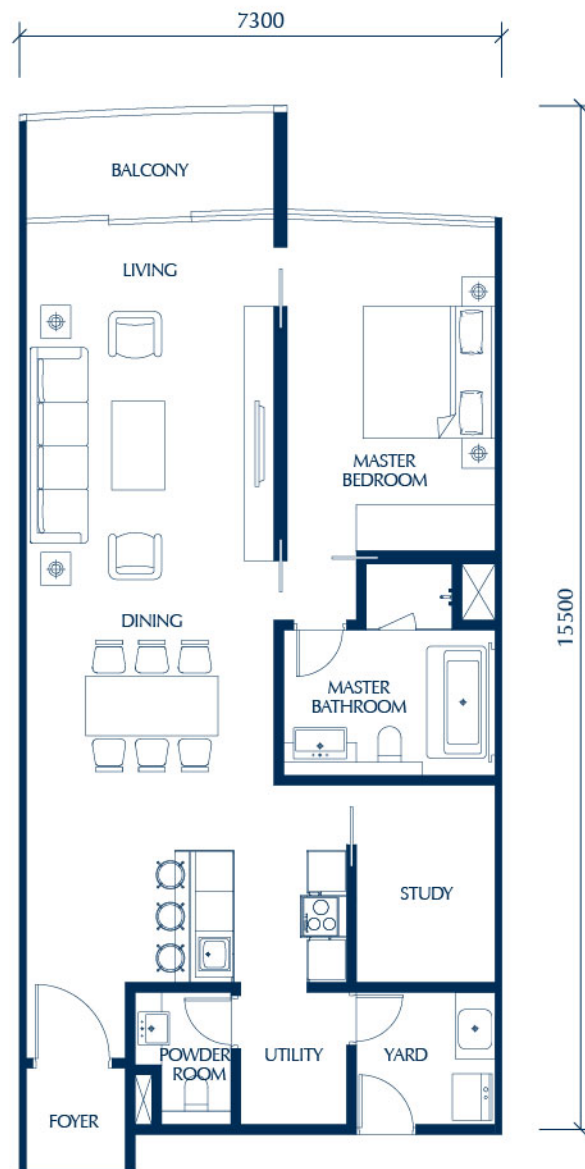


All drawings are subject to change as directed by the relevant authorities or the developer's architect. Where there is discrepancy between metric and imperial measurement, the metric measurement should prevail over the imperial measurement.

TYPE A1

Built-up area: 1,211 sq ft

1+1 bedrooms

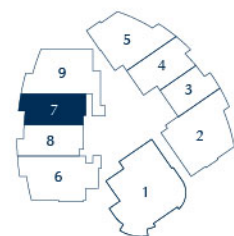
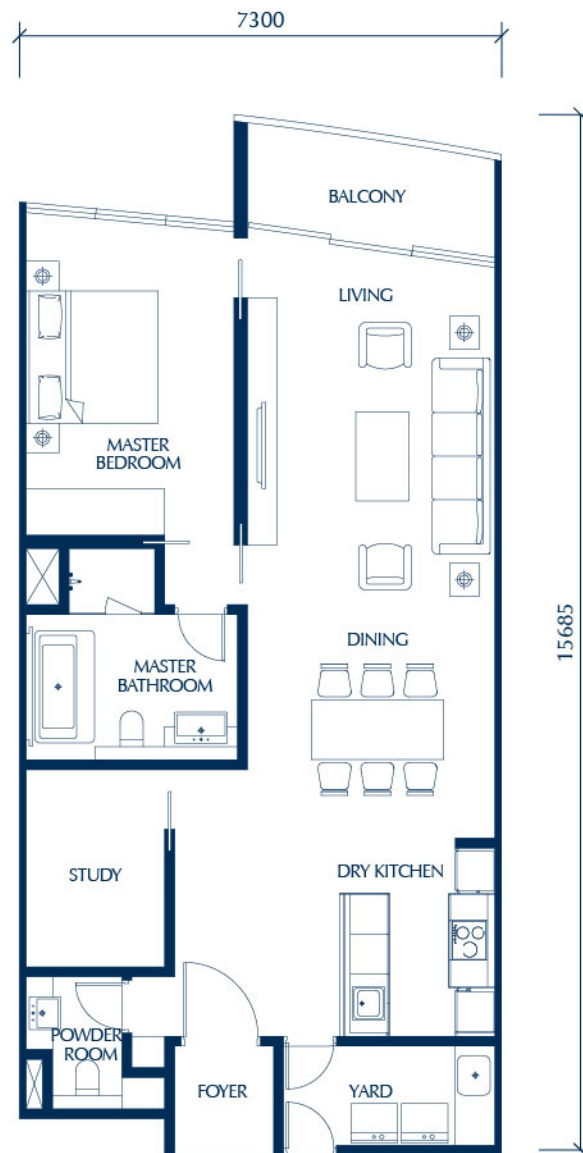


All drawings are subject to change as directed by the relevant authorities or the developer's architect. Where there is discrepancy between metric and imperial measurement, the metric measurement should prevail over the imperial measurement.

TYPE A2

Built-up area: 1,204 sq ft

1+1 bedrooms

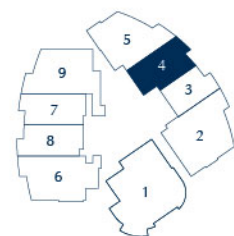
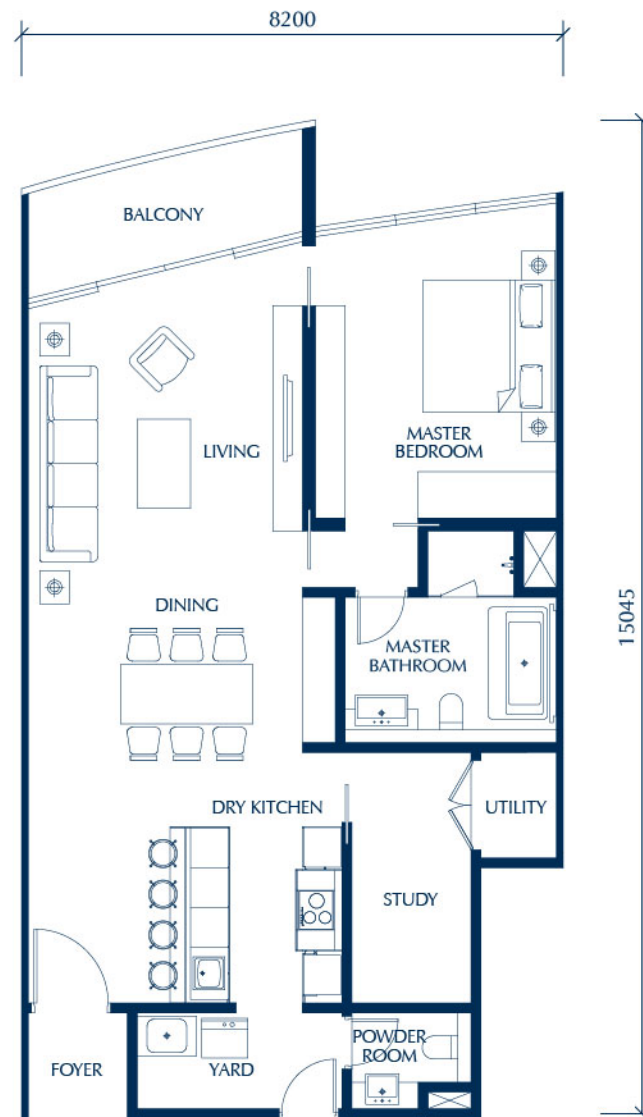


All drawings are subject to change as directed by the relevant authorities or the developer's architect. Where there is discrepancy between metric and imperial measurement, the metric measurement should prevail over the imperial measurement.

TYPE A3

Built-up area: 1,220 sq ft

1+1 bedrooms

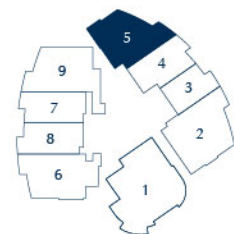


All drawings are subject to change as directed by the relevant authorities or the developer's architect. Where there is discrepancy between metric and imperial measurement, the metric measurement should prevail over the imperial measurement.

TYPE B1

Built-up area: 1,714 sq ft

2+1 bedrooms

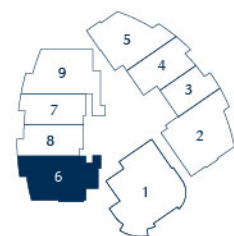
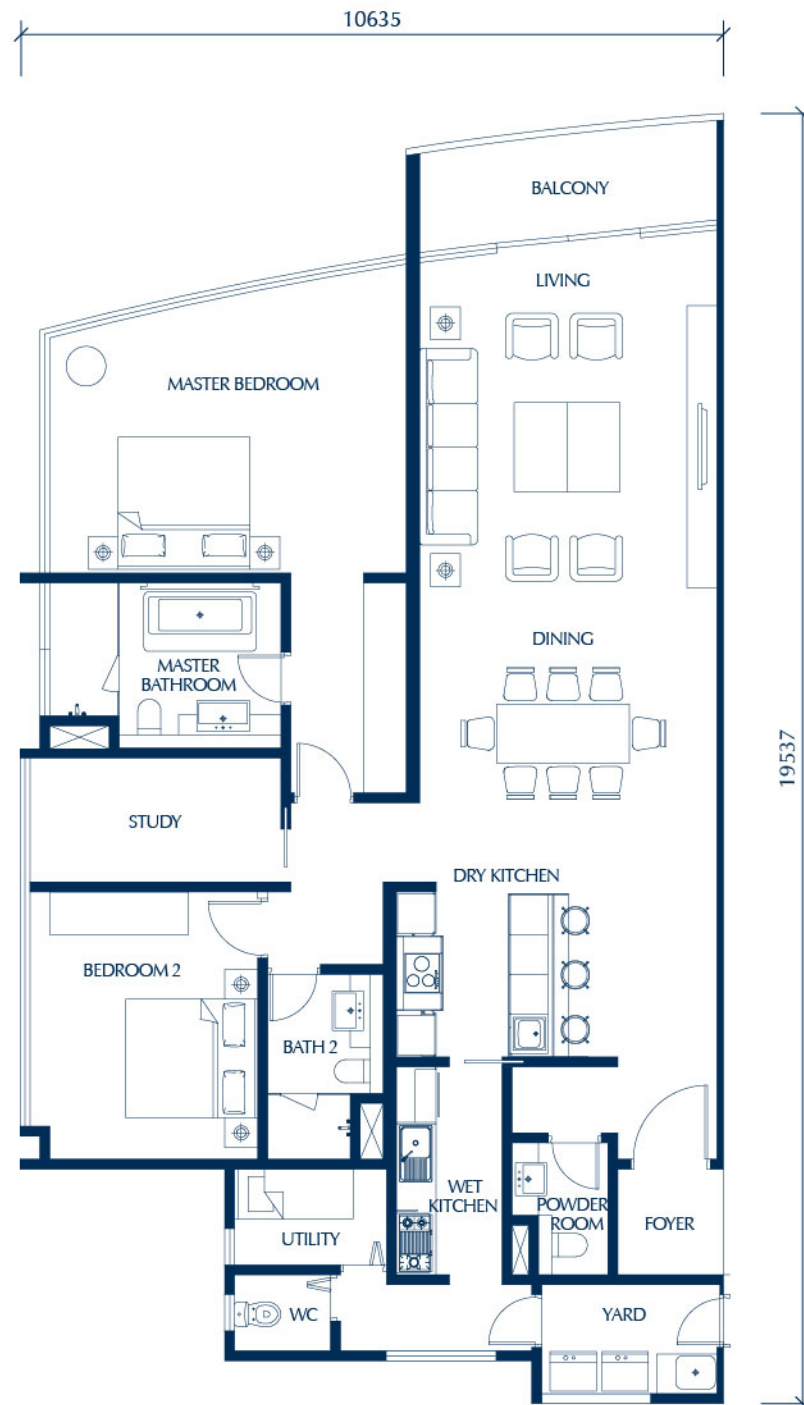


All drawings are subject to change as directed by the relevant authorities or the developer's architect. Where there is discrepancy between metric and imperial measurement, the metric measurement should prevail over the imperial measurement.

TYPE B2

Built-up area: 1,896 sq ft

2+1+1 bedrooms

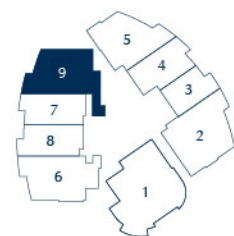
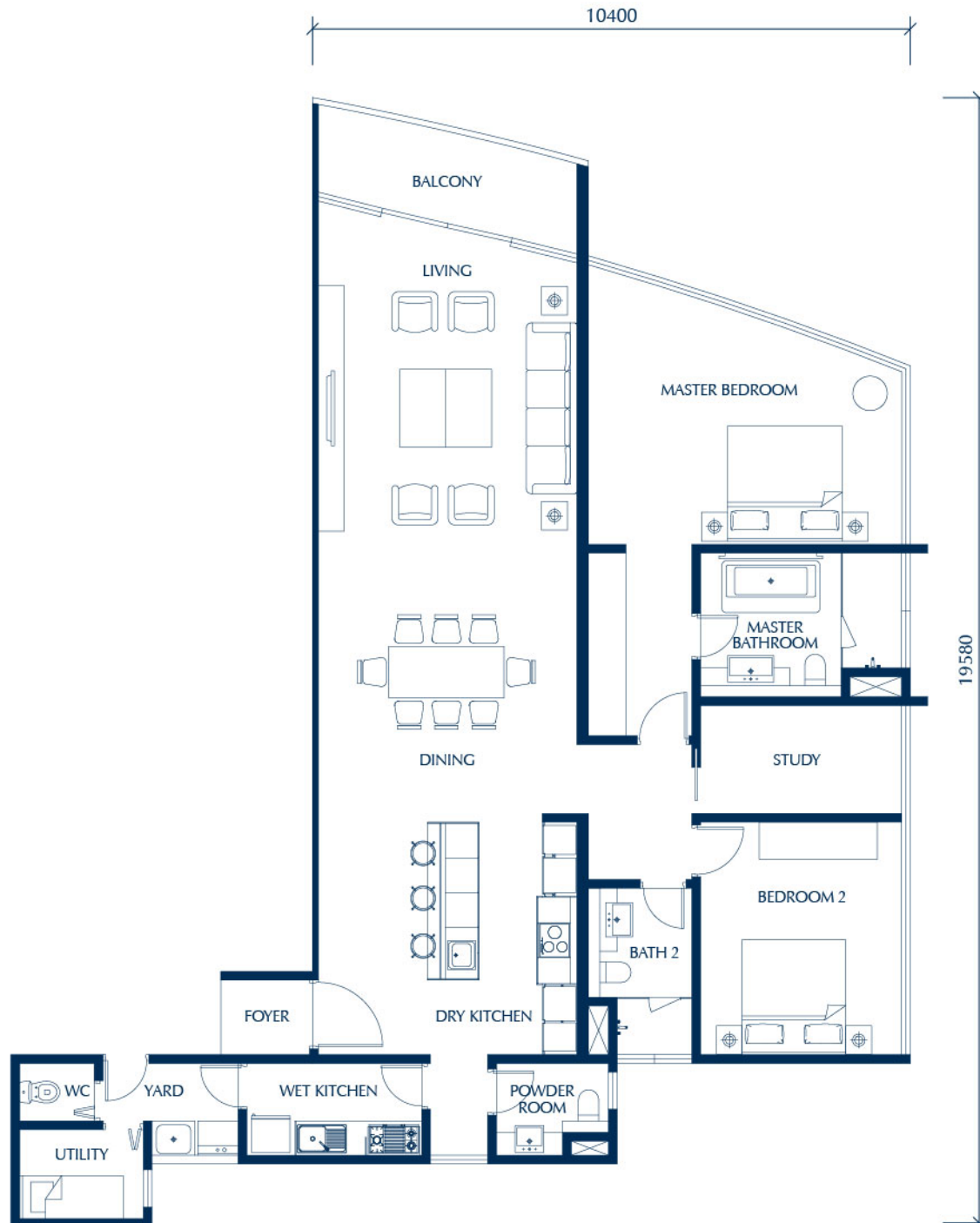


All drawings are subject to change as directed by the relevant authorities or the developer's architect. Where there is discrepancy between metric and imperial measurement, the metric measurement should prevail over the imperial measurement.

TYPE B3

Built-up area: 1,928 sq ft

2+1+1 bedrooms

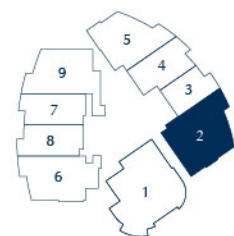


All drawings are subject to change as directed by the relevant authorities or the developer's architect. Where there is discrepancy between metric and imperial measurement, the metric measurement should prevail over the imperial measurement.

TYPE C1

Built-up area: 2,131 sq ft

3+1 bedrooms

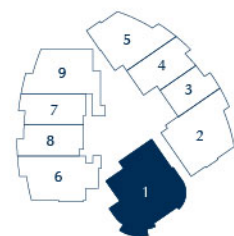


All drawings are subject to change as directed by the relevant authorities or the developer's architect. Where there is discrepancy between metric and imperial measurement, the metric measurement should prevail over the imperial measurement.

TYPE E1

Built-up area: 2,705 sq ft

3+1 bedrooms



All drawings are subject to change as directed by the relevant authorities or the developer's architect. Where there is discrepancy between metric and imperial measurement, the metric measurement should prevail over the imperial measurement.



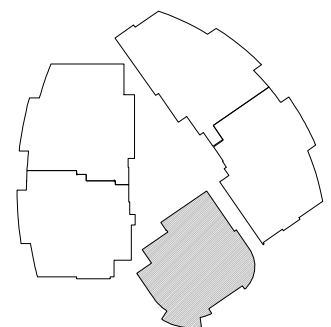
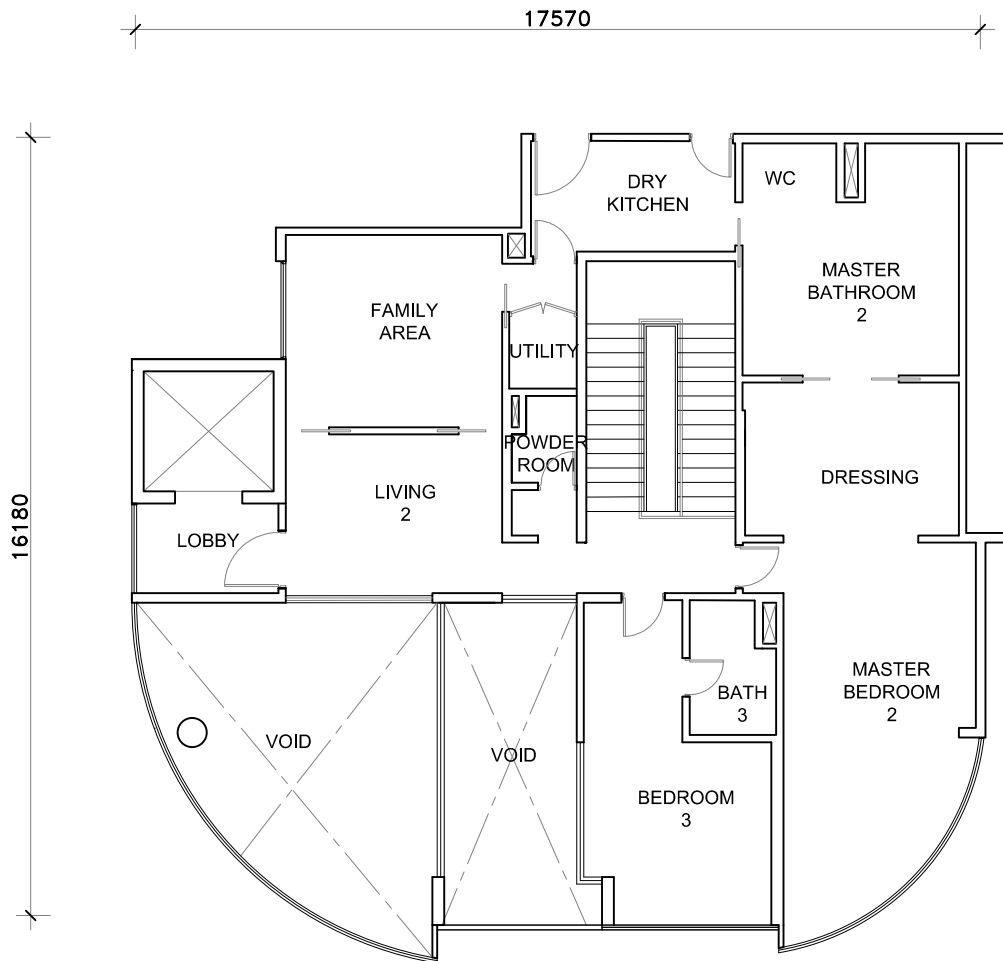
RESIDENCY

d a m a n s a r a
h e i g h t s

Typical Floor Plans

TYPE PH-1A UPPER

Built-up area: 4,676 sq ft
4+1 bedrooms



KEY PLAN





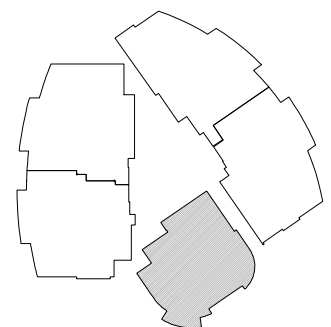
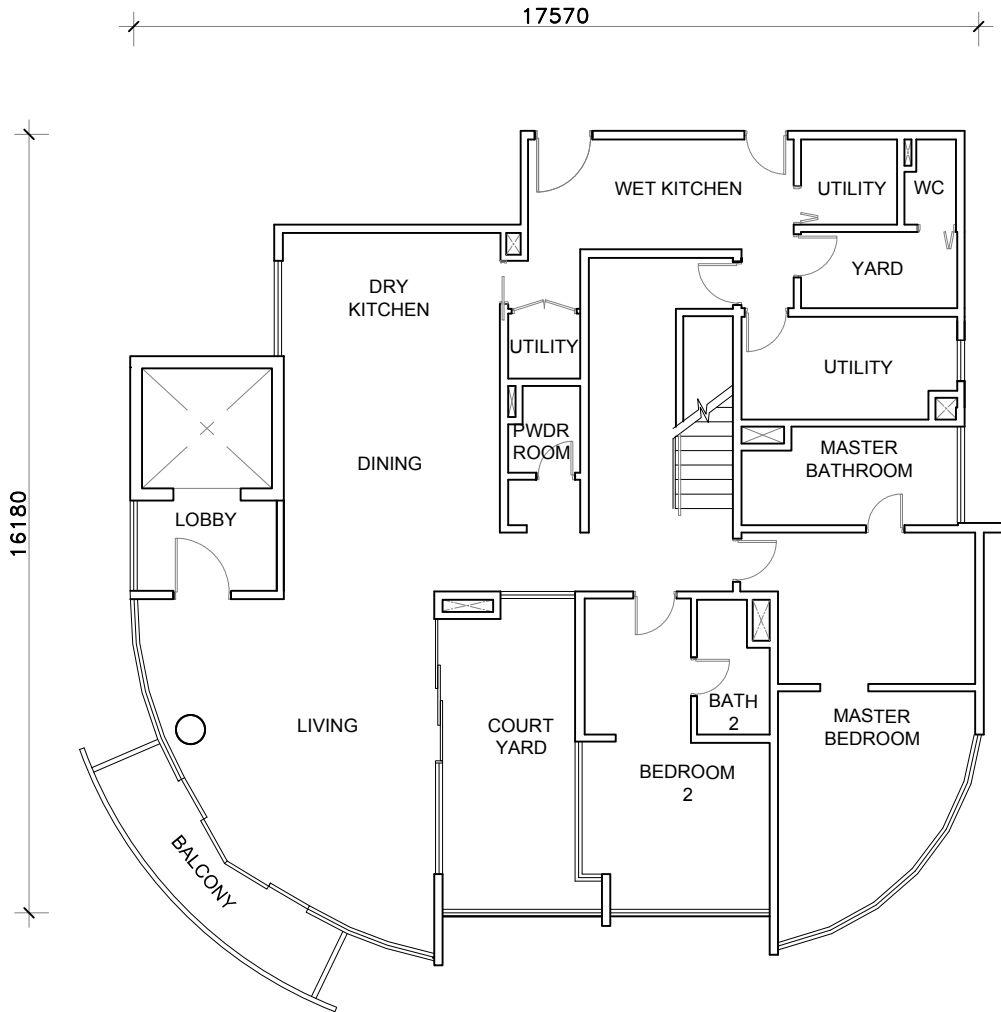
RESIDENCY

d a m a n s a r a
h e i g h t s

Typical Floor Plans

TYPE PH-1A

Built-up area: 4,676 sq ft
4+1 bedrooms



KEY PLAN





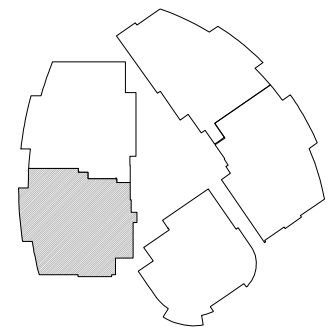
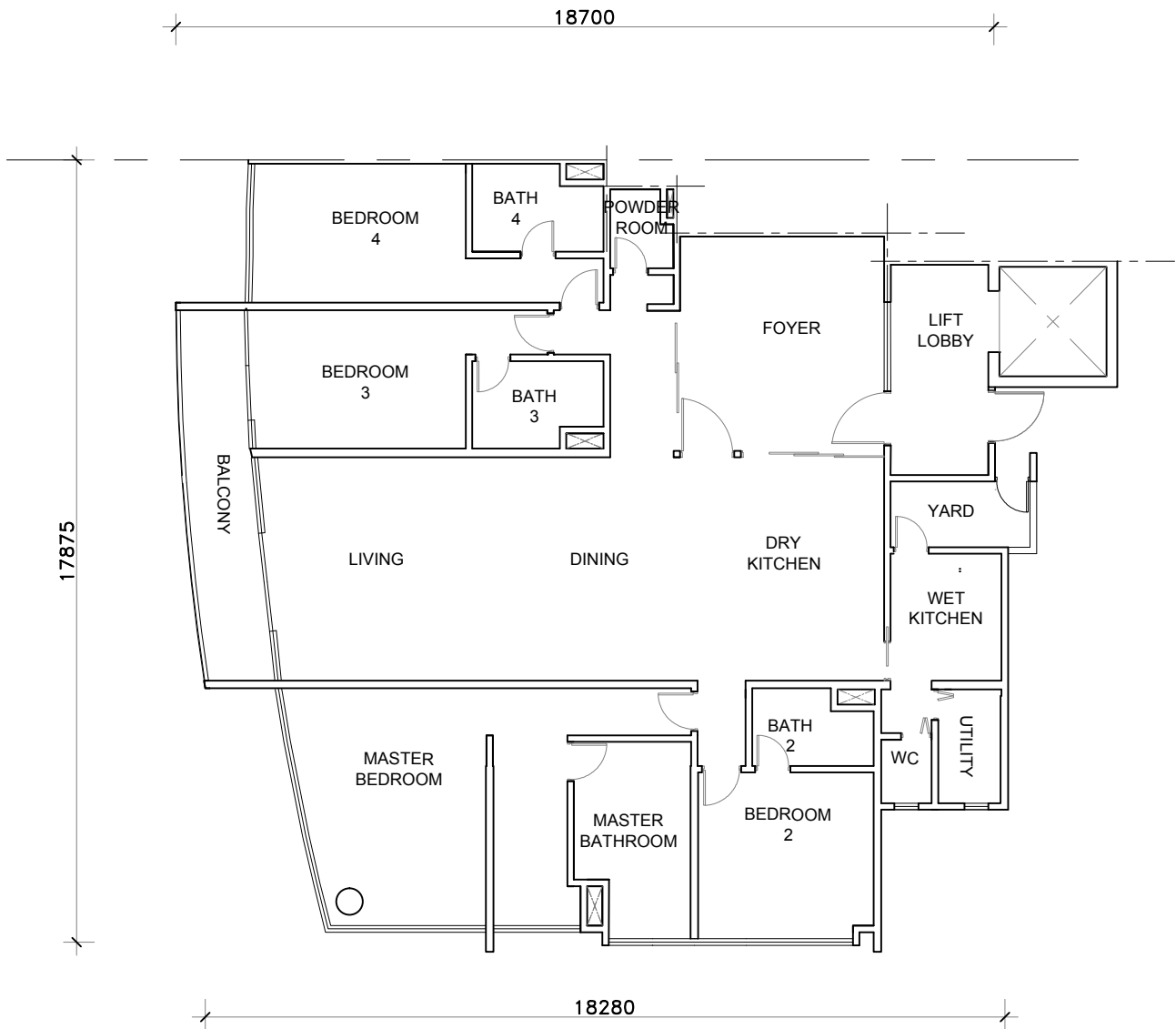
RESIDENCY

d a m a n s a r a
h e i g h t s

Typical Floor Plans

TYPE PH-2B

Built-up area: 2,943 sq ft
4+1 bedrooms



KEY PLAN





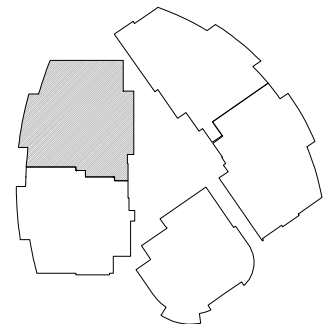
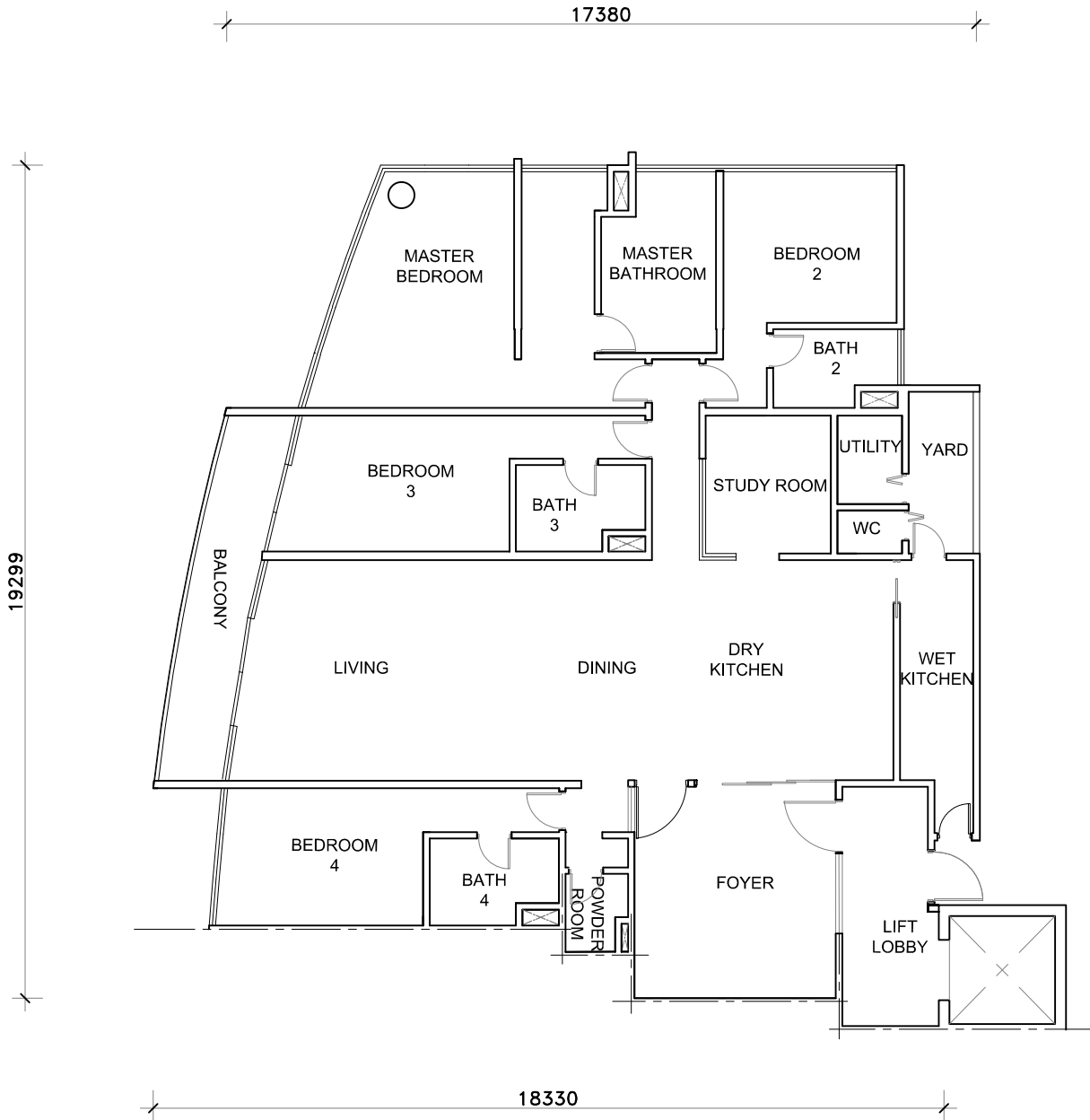
RESIDENCY

d a m a n s a r a
h e i g h t s

Typical Floor Plans

TYPE PH-3B

Built-up area: 3,129 sq ft
4+1 bedrooms



KEY PLAN





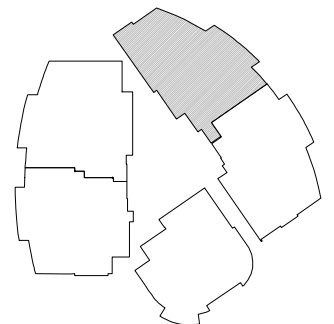
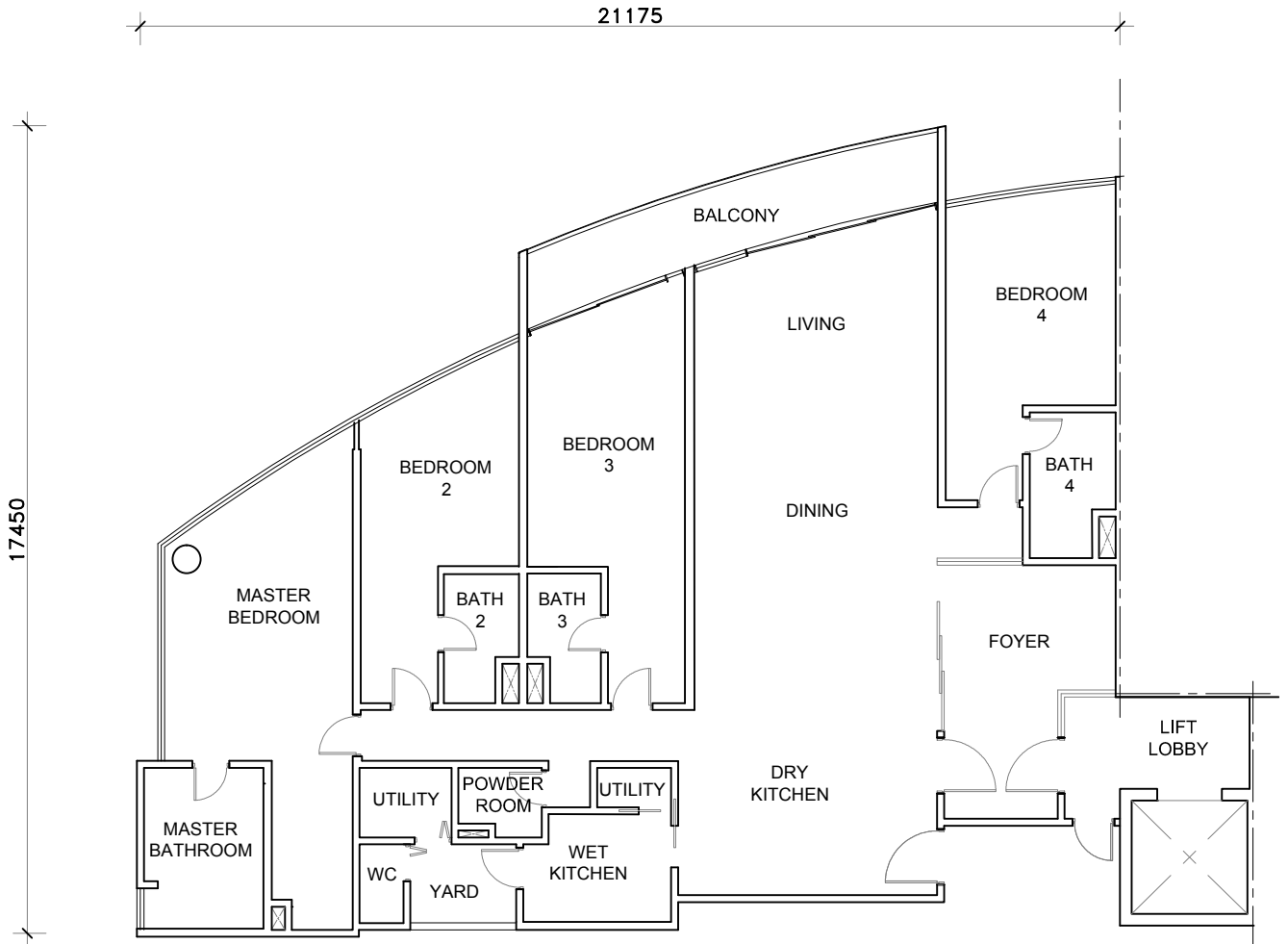
RESIDENCY

d a m a n s a r a
h e i g h t s

Typical Floor Plans

TYPE PH-5B UPPER

Built-up area: 2,978 sq ft
4+1 bedrooms



KEY PLAN





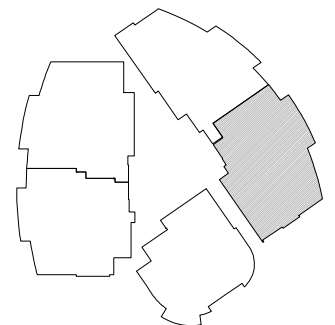
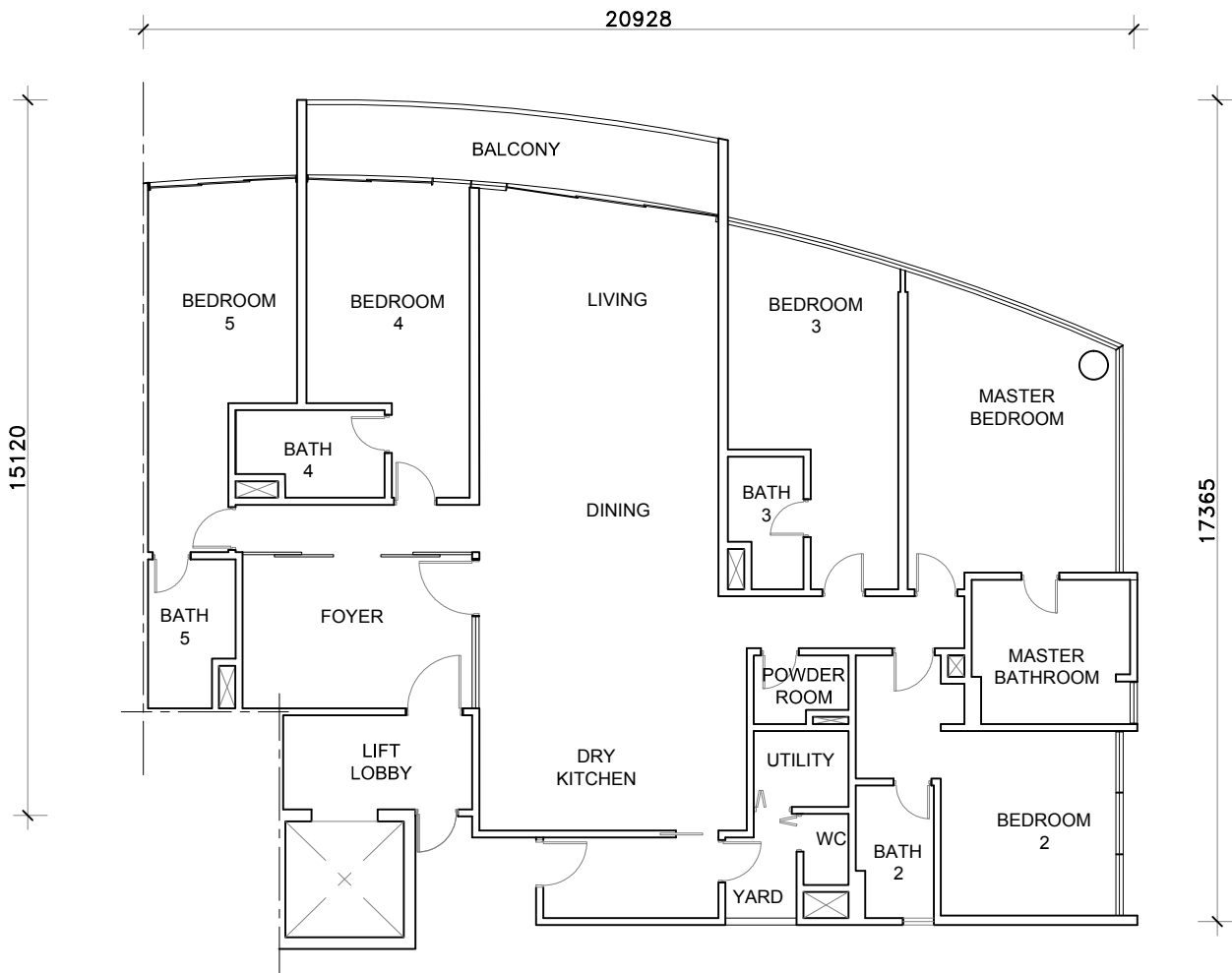
RESIDENCY

d a m a n s a r a
h e i g h t s

Typical Floor Plans

TYPE PH-6

Built-up area: 3,074 sq ft
5+1 bedrooms



KEY PLAN 