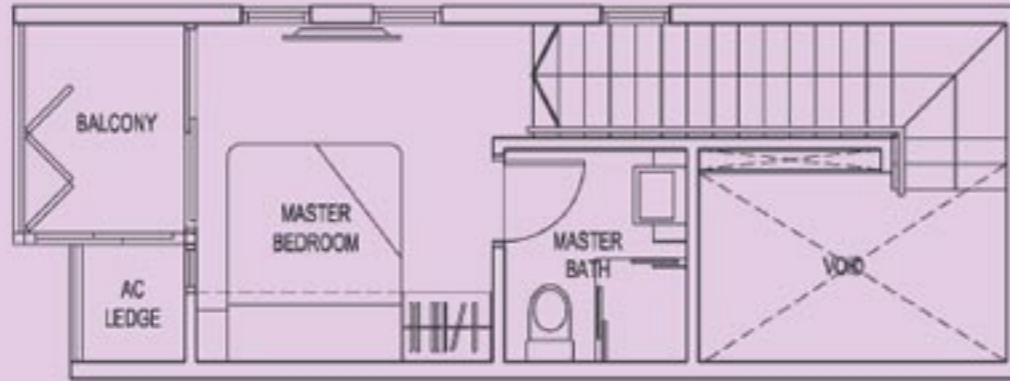


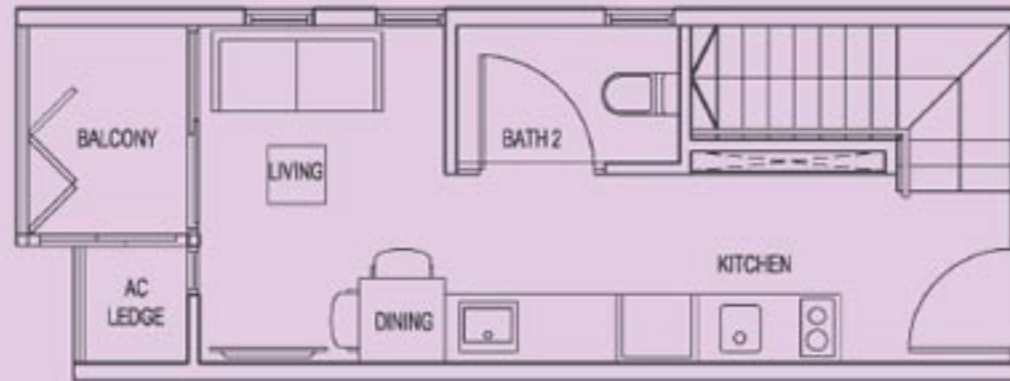
# TYPE A1b (1-Bedroom + 2-Bathroom)

Unit #02-23, #04-23, #06-23

Area 52 Sqm / 560 Sqft

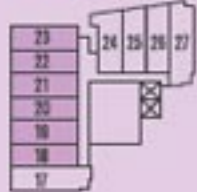


UPPER STOREY



LOWER STOREY

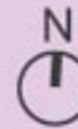
2ND STOREY



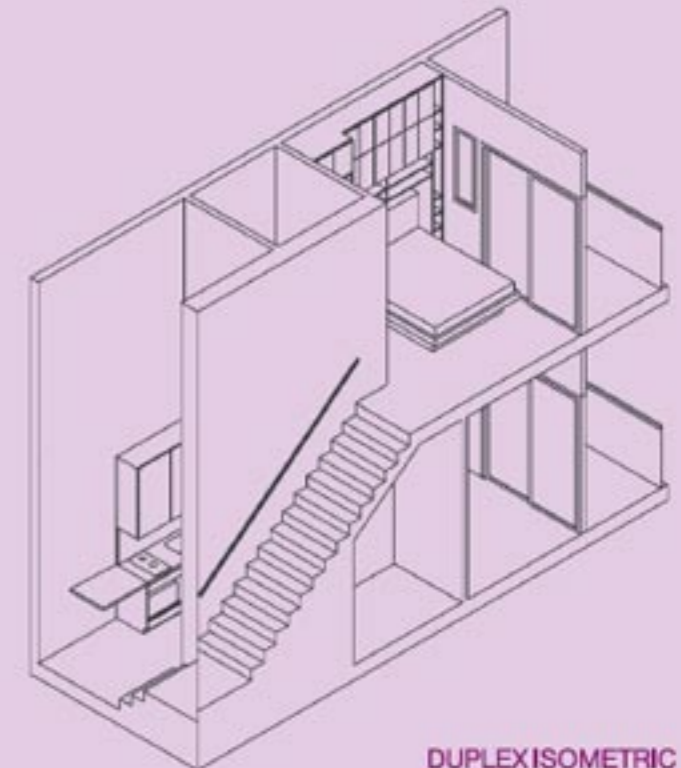
4TH STOREY



6TH STOREY



This is just a draft floor plan, please kindly register your email in the website below to receive the full e-floorplan - Official New Launch



All plans are inclusive of balcony and/or roof terrace and/or a/c ledge and/or strata void area and/or planter, where applicable. All areas subject to final surveyor calculation.  
 Building Plan Approval Number: A1404-00357-2012-BPO1 Dated 03 January 2013

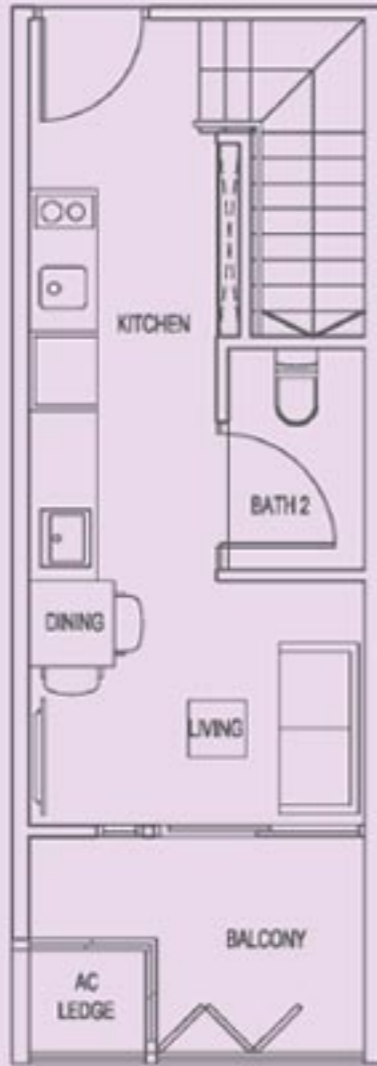
# TYPE A2 (1-Bedroom + 2-Bathroom)

Unit #06-33

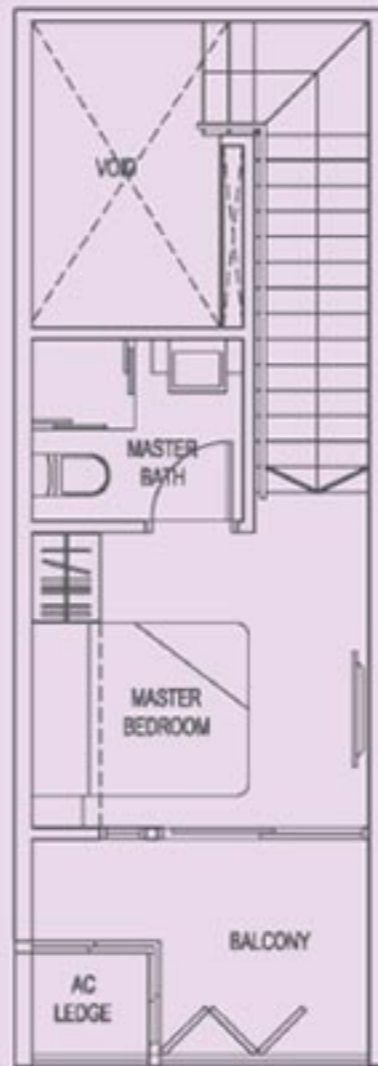
(Mirrored)

#06-32, #06-34

Area 56 Sqm / 603 Sqft



LOWER STOREY



UPPER STOREY

This is just a draft floor plan, please kindly register your email in the website below to receive the full e-floorplan - Official New Launch

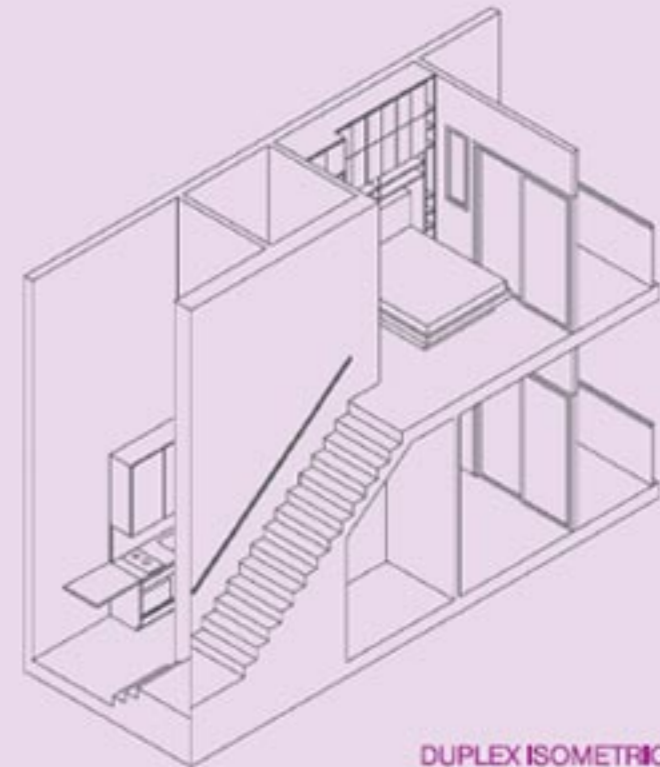
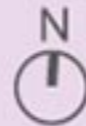
2ND STOREY



4TH STOREY



6TH STOREY



DUPLEX ISOMETRIC

# TYPE A2a-G (1-Bedroom + 2-Bathroom)

Unit #04-31

Area 58 Sqm / 624 Sqft



LOWER STOREY



UPPER STOREY

This is just a draft floor plan, please kindly register your email in the website below to receive the full e-floorplan - Official New Launch

4TH STOREY



6TH STOREY



DUPLEX ISOMETRIC

All plans are inclusive of balcony and/or roof terrace and/or a/s ledge and/or strata void area and/or planter, where applicable. All areas subject to final surveyor calculation.  
 Building Plan Approval Number: A1404-00357-2012-BPO1 Dated 03 January 2012

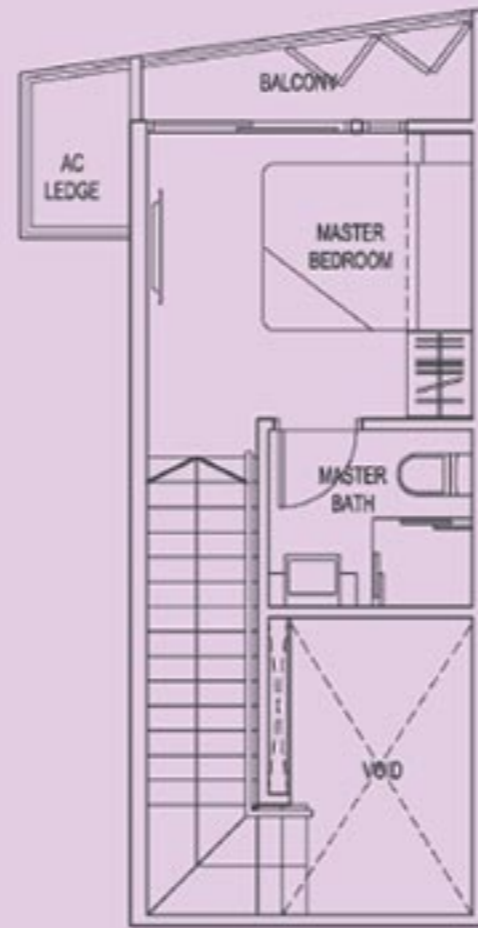
## TYPE A4 (1-Bedroom + 2-Bathroom)

Unit #02-24, #04-24, #06-24

Area 52 Sqm / 560 Sqft



LOWER STOREY



UPPER STOREY



LOWER STOREY

This is just a draft floor plan, please kindly register your email in the website below to receive the full e-floorplan - Official New Launch

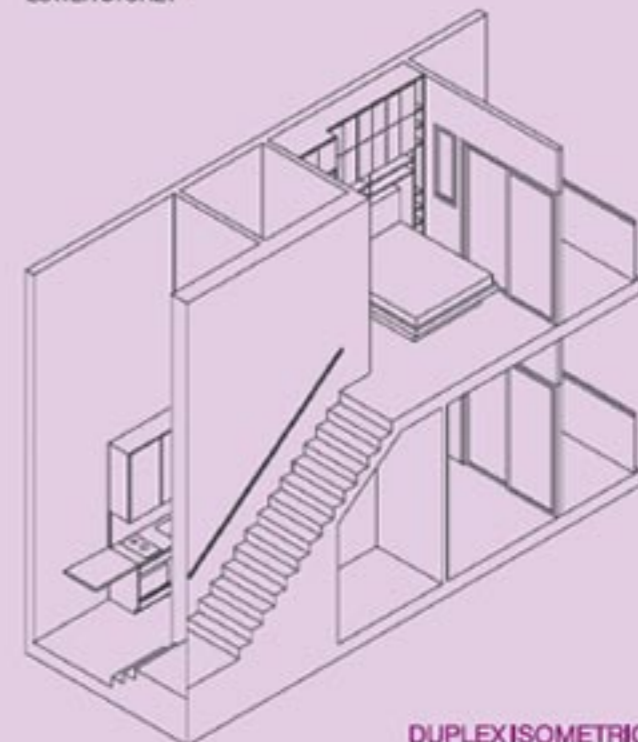
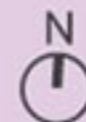
2ND STOREY



4TH STOREY



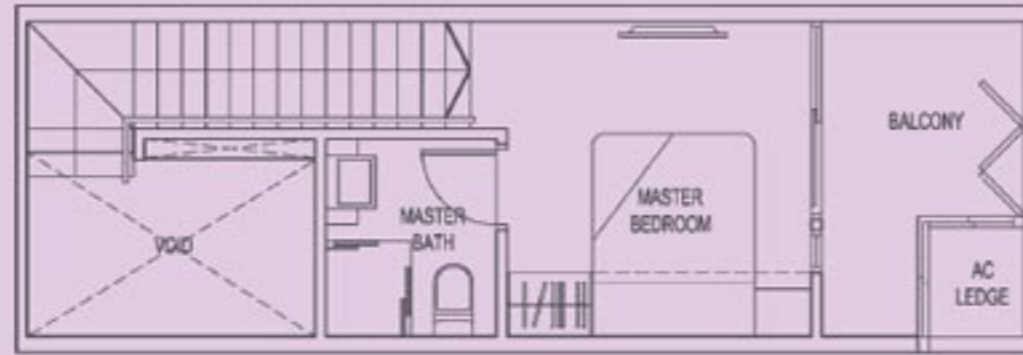
6TH STOREY



DUPLEX ISOMETRIC

## TYPE A6-G (1-Bedroom + 2-Bathroom)

Unit #04-02, #04-04, #04-06  
 (Mirrored)  
 #04-03, #04-05, #04-08  
 Area 66 Sqm / 710 Sqft



UPPER STOREY



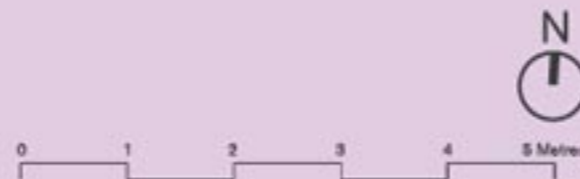
LOWER STOREY

This is just a draft floor plan, please kindly register your email in the website below to receive the full e-floorplan - Official New Launch

4TH STOREY



6TH STOREY



DUPLEX ISOMETRIC

# TYPE A2a-P (1-Bedroom + Study + 2-Bathroom Penthouse)

Unit #08-31

Area 55 Sqm / 592 Sqft



LOWER STOREY



UPPER STOREY

8TH STOREY



This is just a draft floor plan, please kindly register your email in the website below to receive the full e-floorplan - Official New Launch

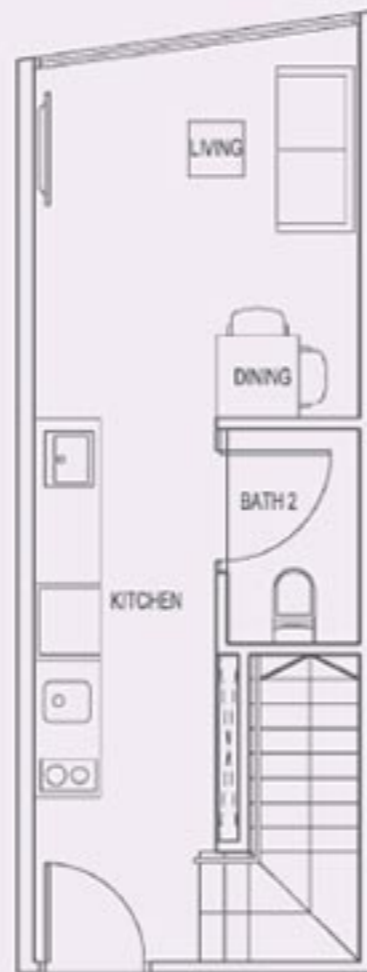


DUPLEX ISOMETRIC

# TYPE A5-P (1-Bedroom + 2-Bathroom Penthouse)

Unit #08-25

Area 52 Sqm / 560 Sqft

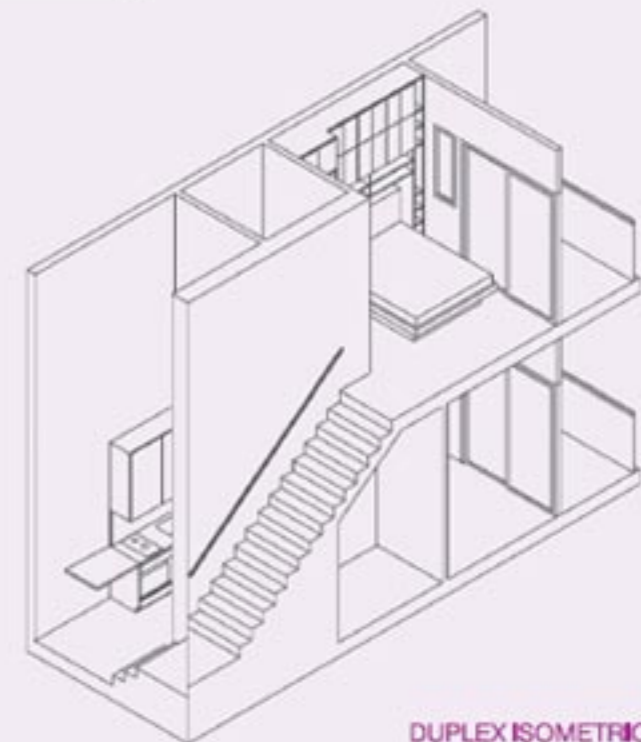


LOWER STOREY



UPPER STOREY

This is just a draft floor plan, please kindly register your email in the website below to receive the full e-floorplan - Official New Launch



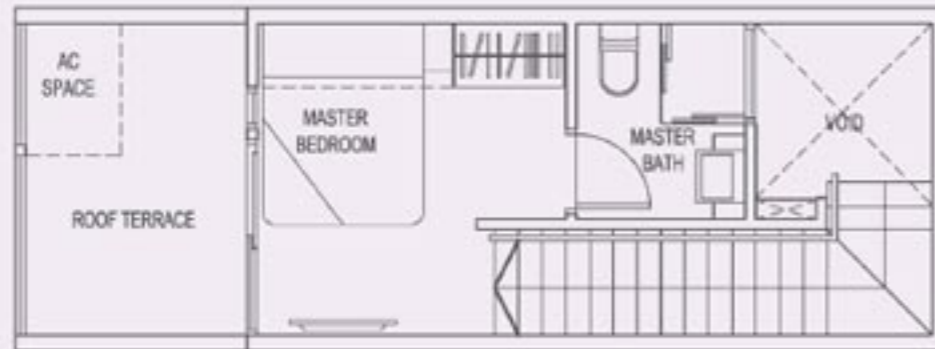
DUPLEX ISOMETRIC

All plans are inclusive of balcony and/or roof terrace and/or a/c ledge and/or strata void area and/or plaster, where applicable. All areas subject to final surveyor calculation.  
 Building Plan Approval Number: A1406400357-201248P01 Dated 03 January 2013

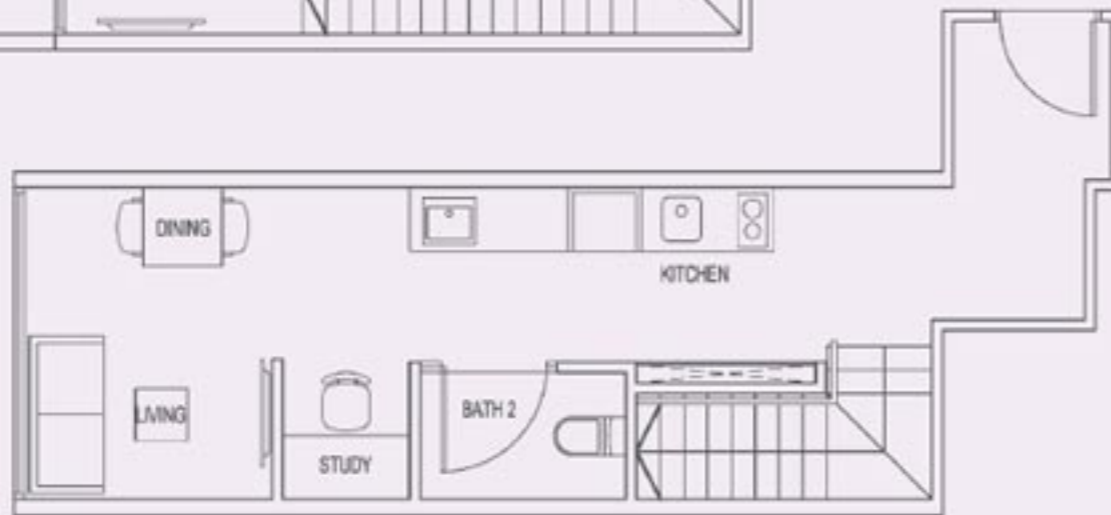
# TYPE A7-P (1-Bedroom + Study + 2-Bathroom Penthouse)

Unit #08-10

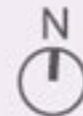
Area 58 Sqm / 624 Sqft



This is just a draft floor plan, please kindly register your email in the website below to receive the full e-floorplan - Official New Launch



## 8TH STOREY



All plans are inclusive of balcony and/or roof terrace and/or a/c ledge and/or strata void area and/or planter, where applicable. All areas subject to final surveyor calculation.  
Building Plan Approval Number: A1404-00357-2012-BP01 Dated 03 January 2013