

HOUSE NO. 12K + 564 sq.m. / 6069 sq.ft.

HOUSE NO. 12L + 566 sq.m. / 6090 sq.ft.

(3 bedroom - family - utility)

For more information (including drawings, ADS, photos, etc.) please contact: info@alad.com or [+974 50 909 000](tel:+97450909000)



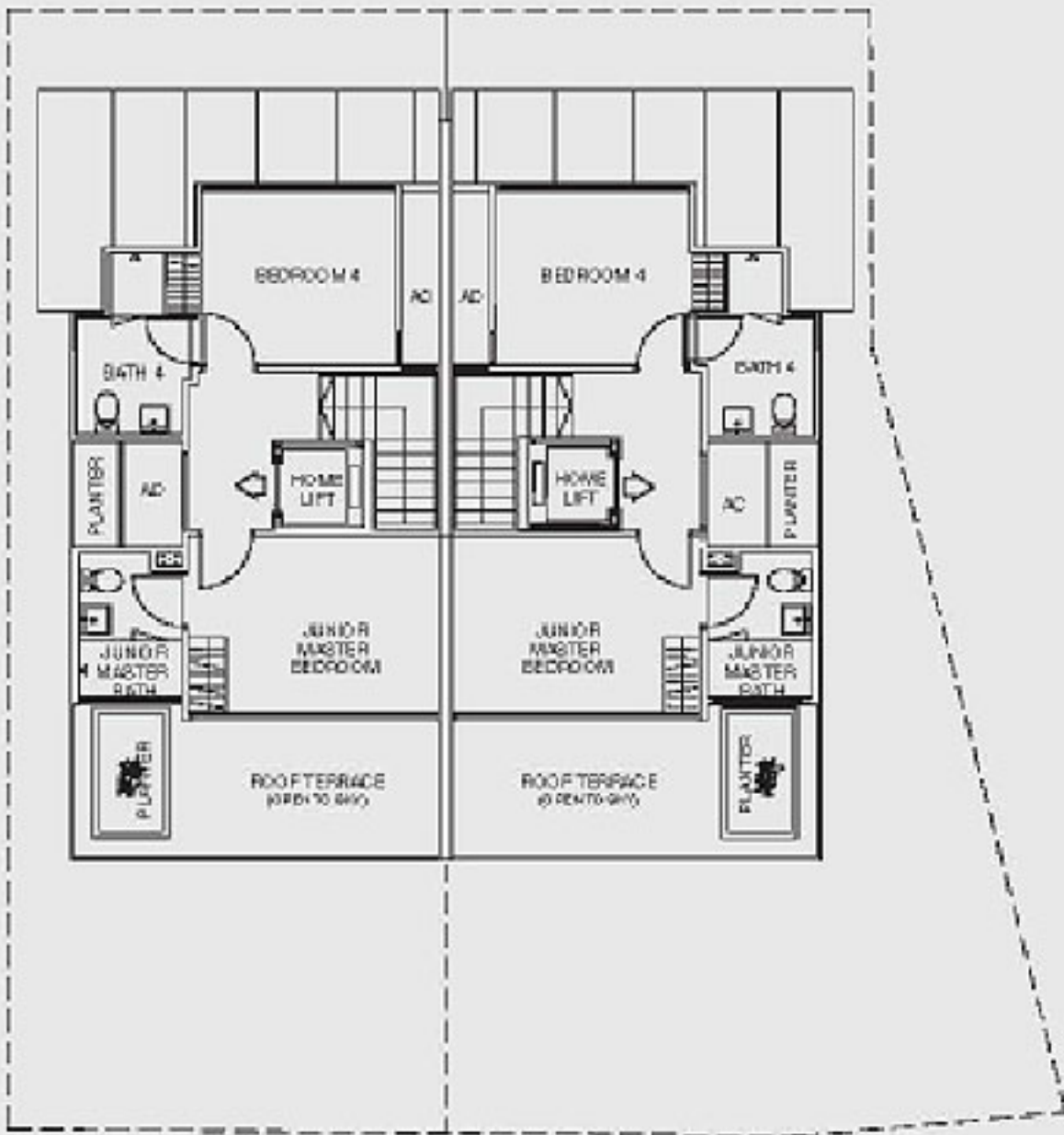
12M

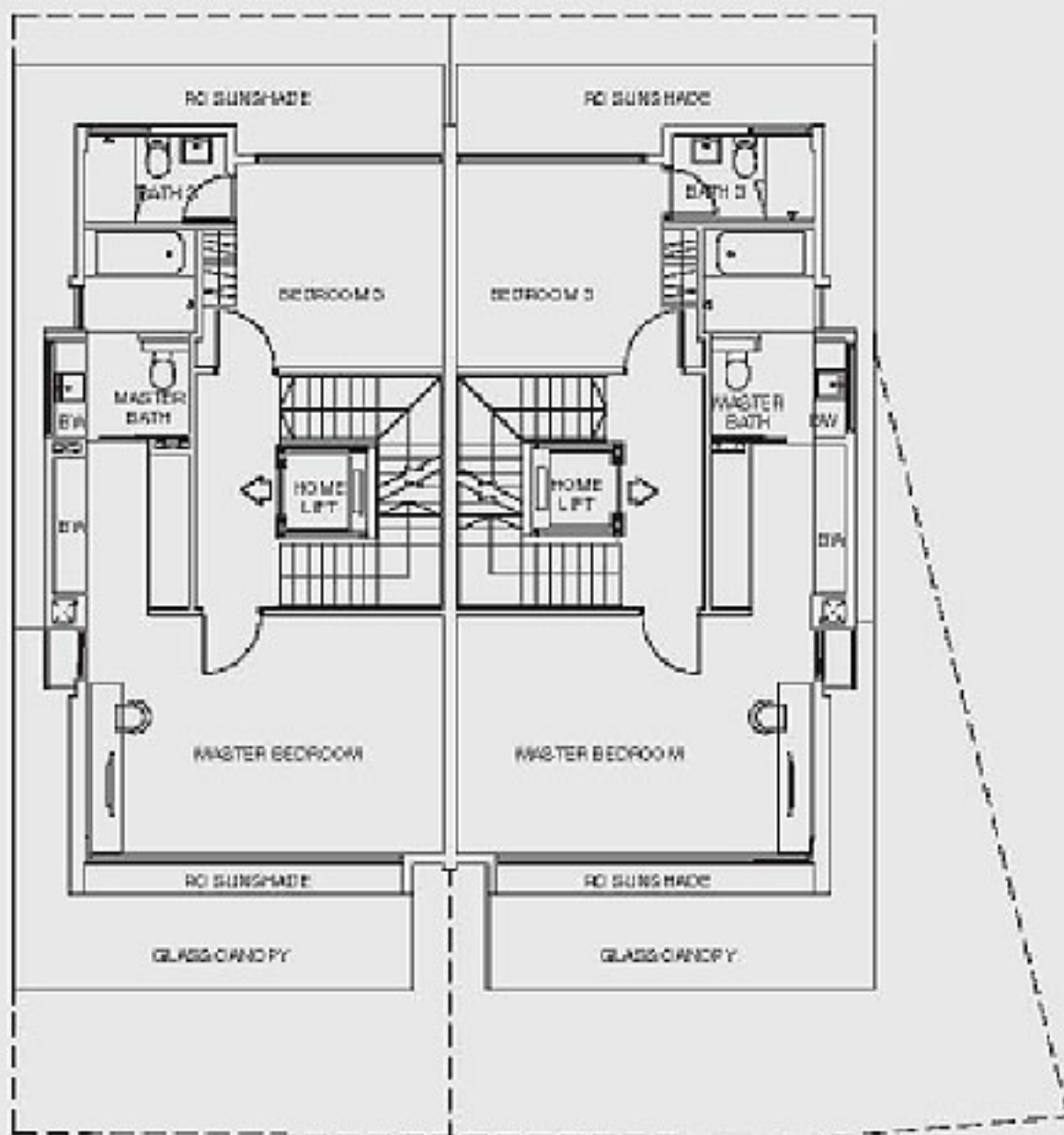


12N

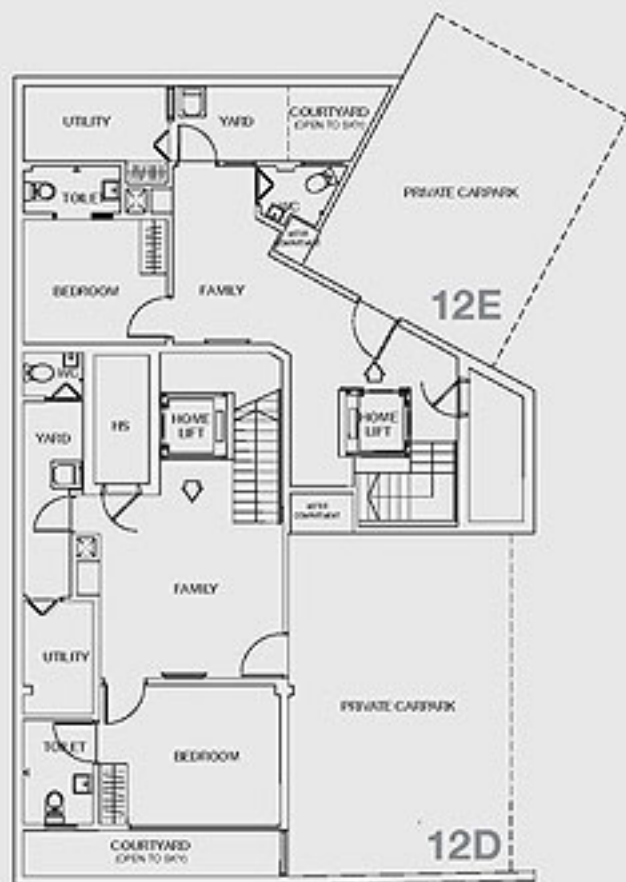
HOUSE NO. 12M
HOUSE NO. 12N



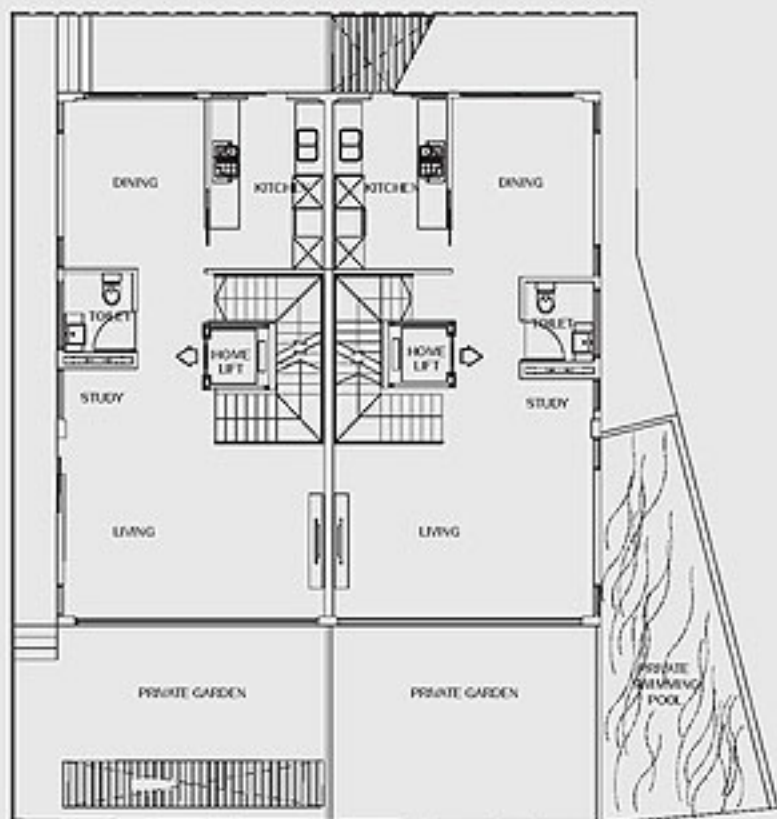




2nd storey

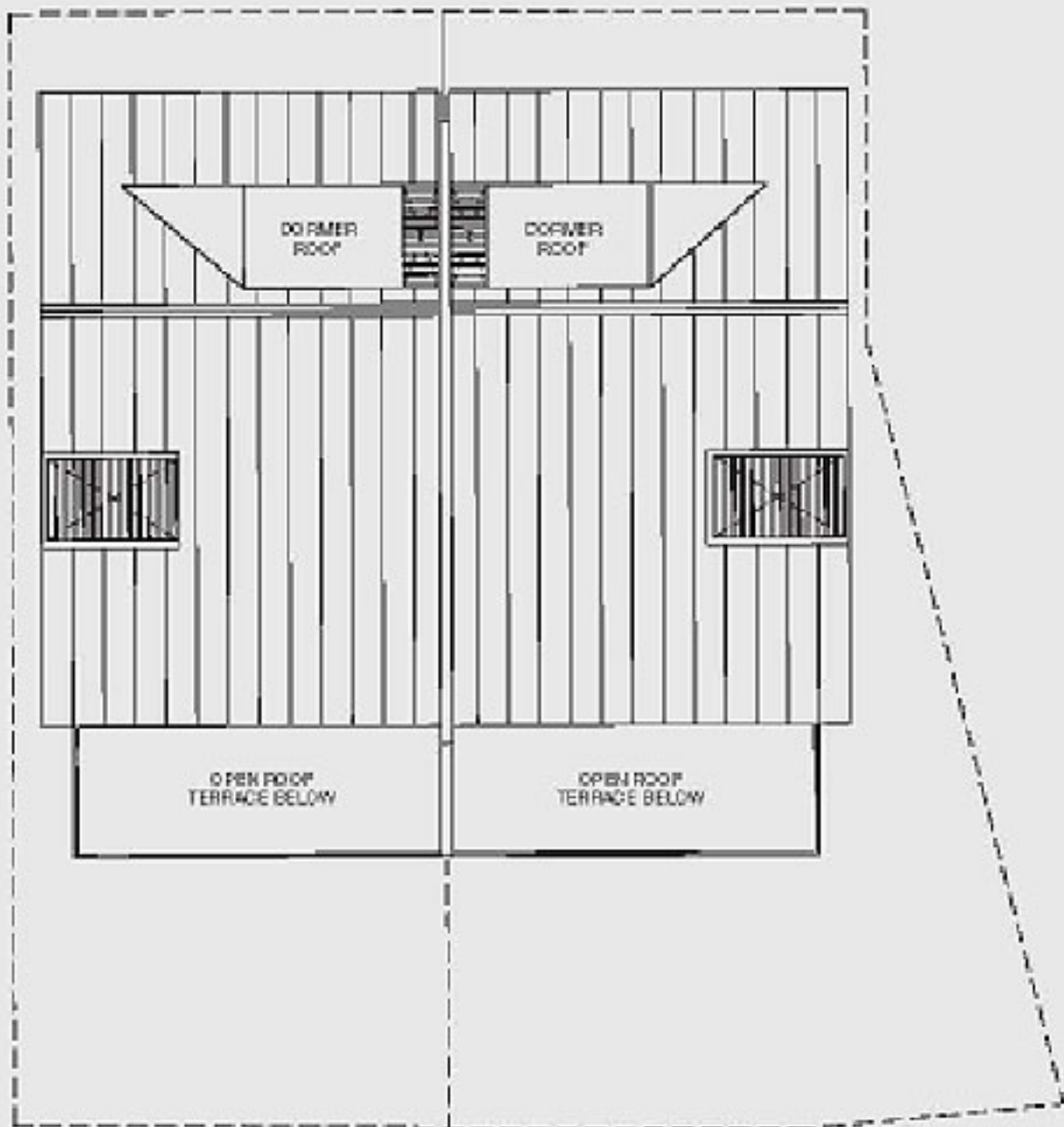


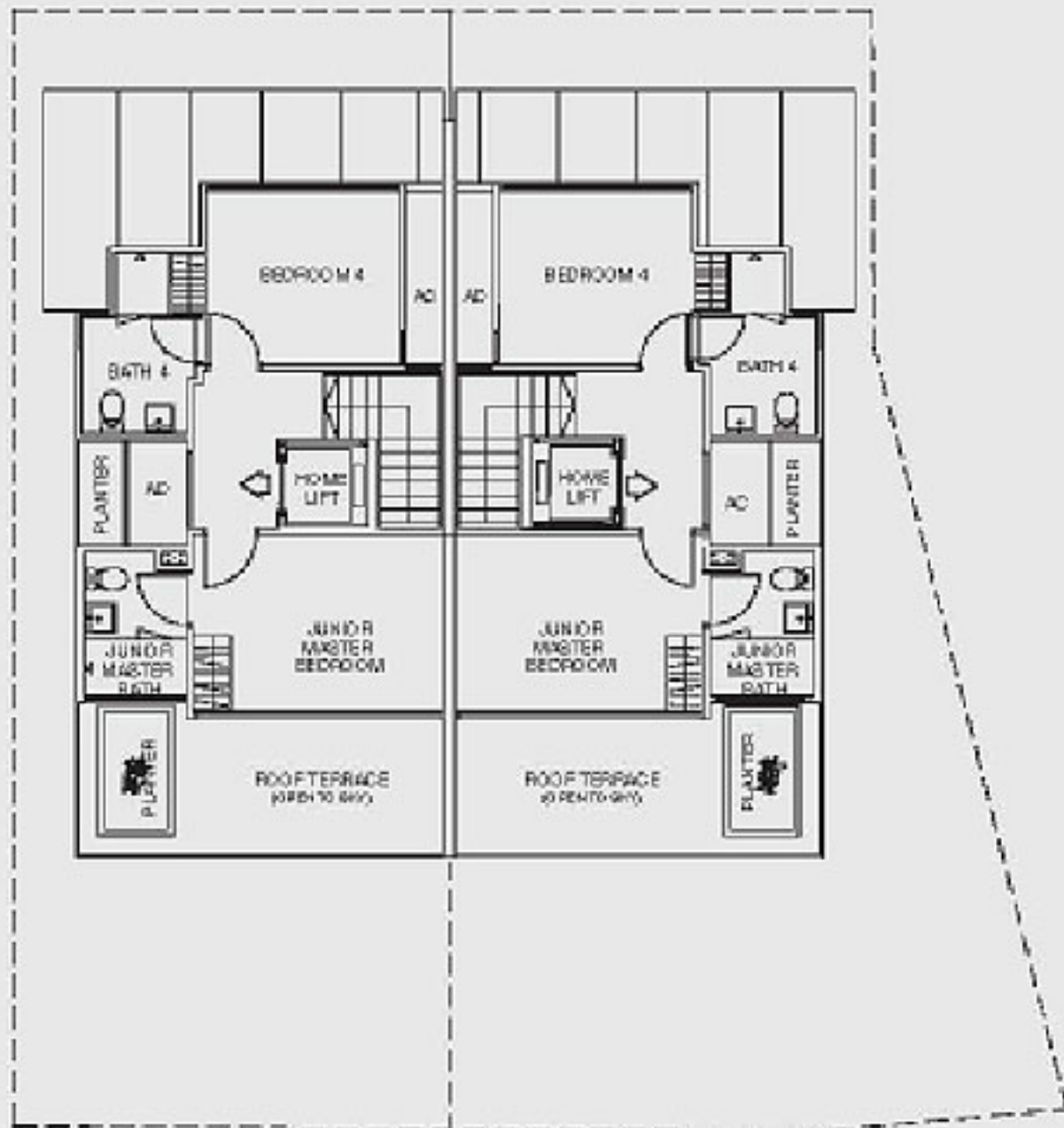
basement

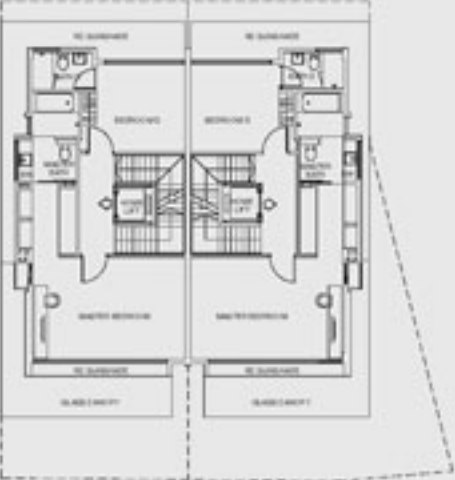


1st storey

HOUSE NO. 12D
HOUSE NO. 12E



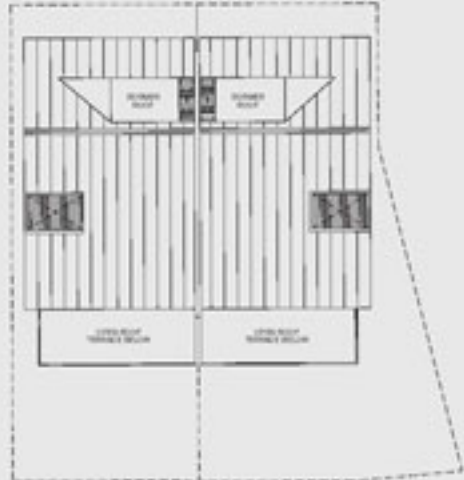




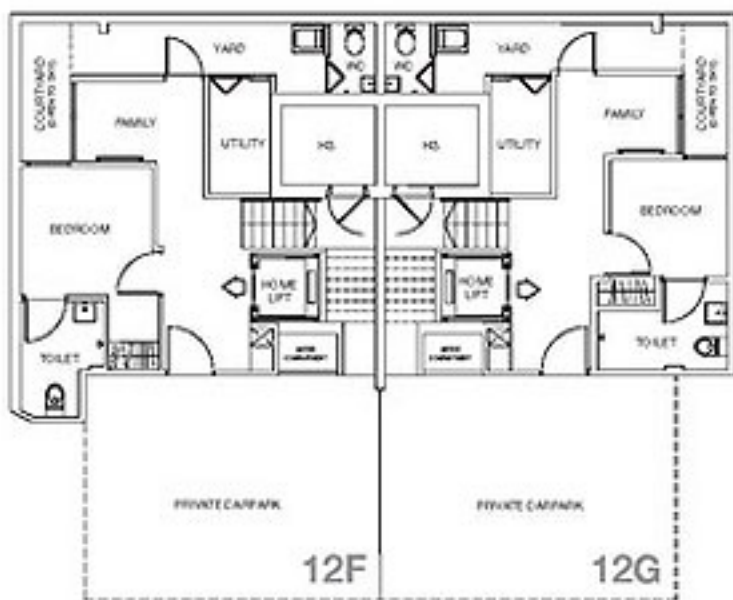
2nd story



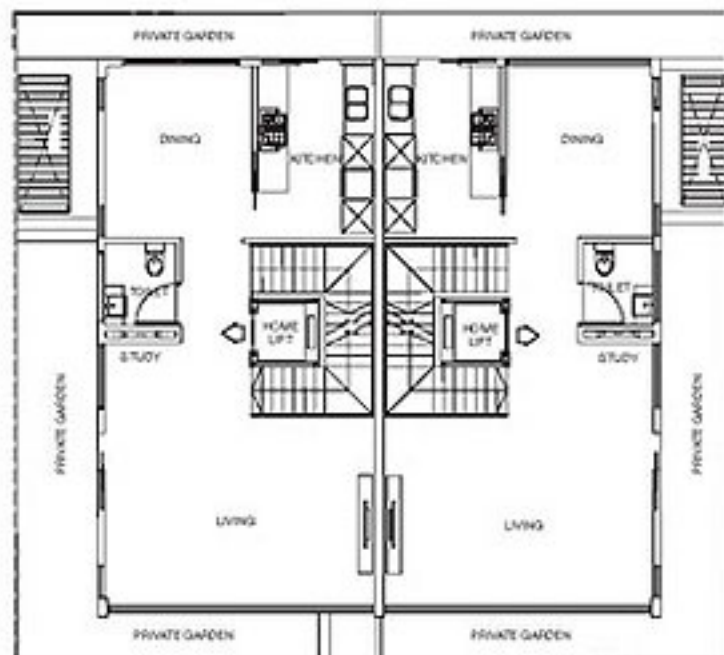
3rd



4th

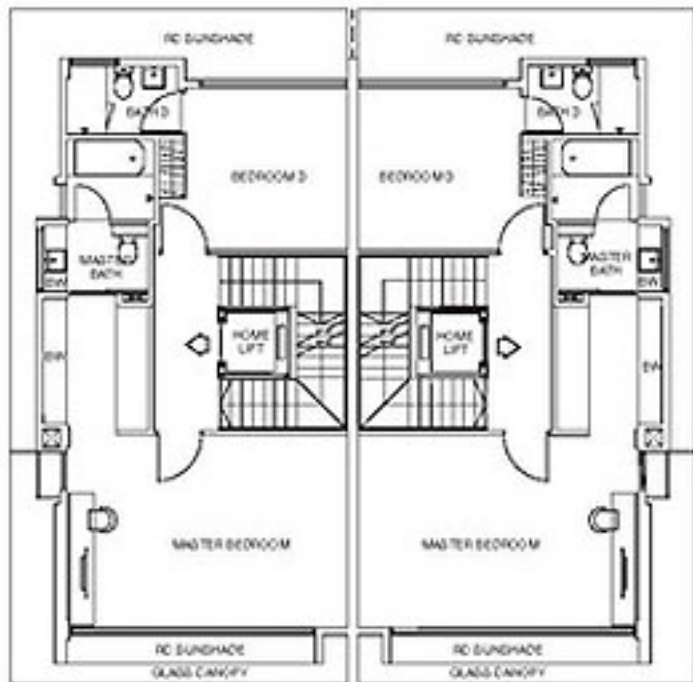


basement

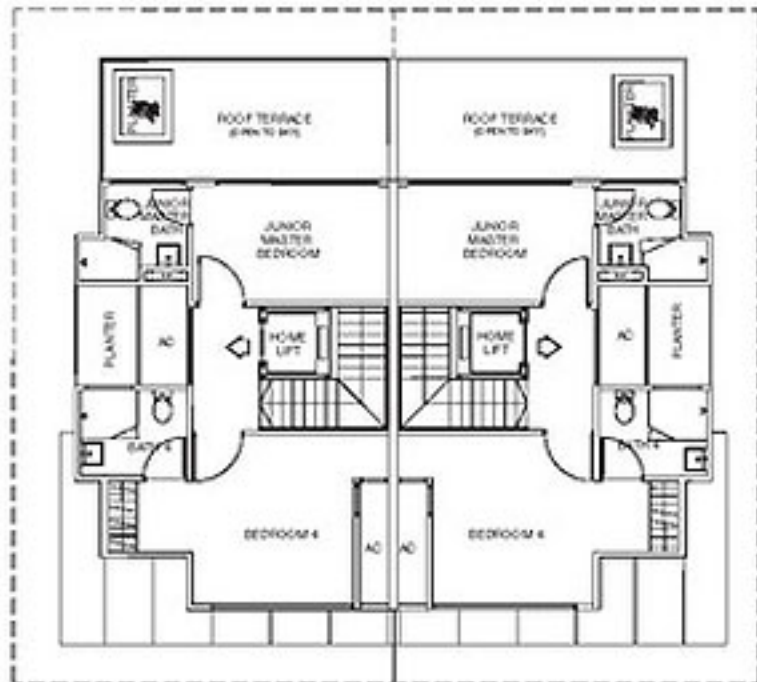


1st storey

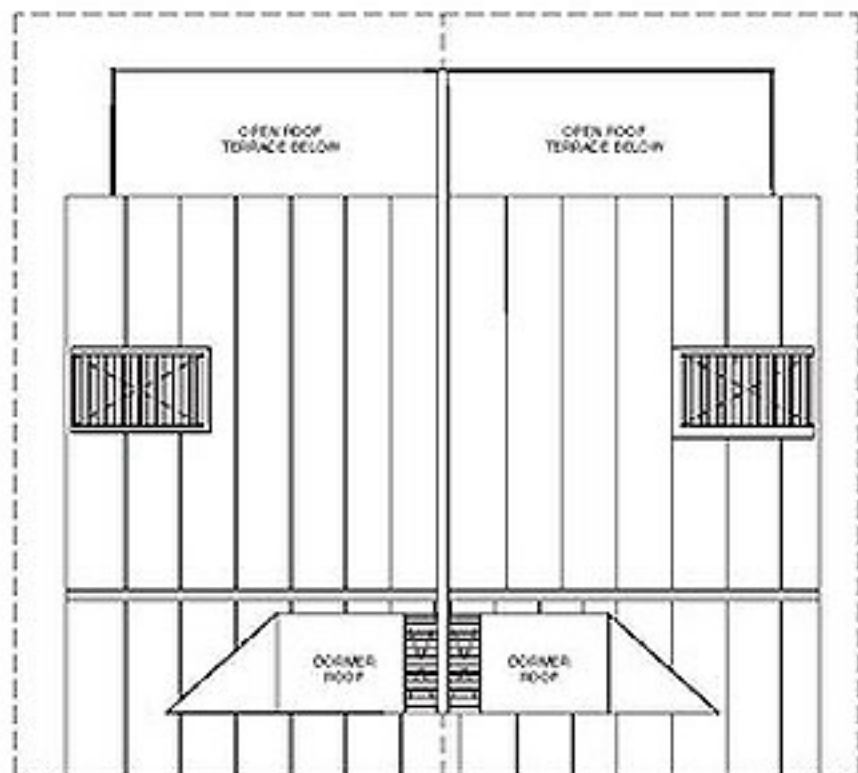
HOUSE NO. 12F
HOUSE NO. 12G



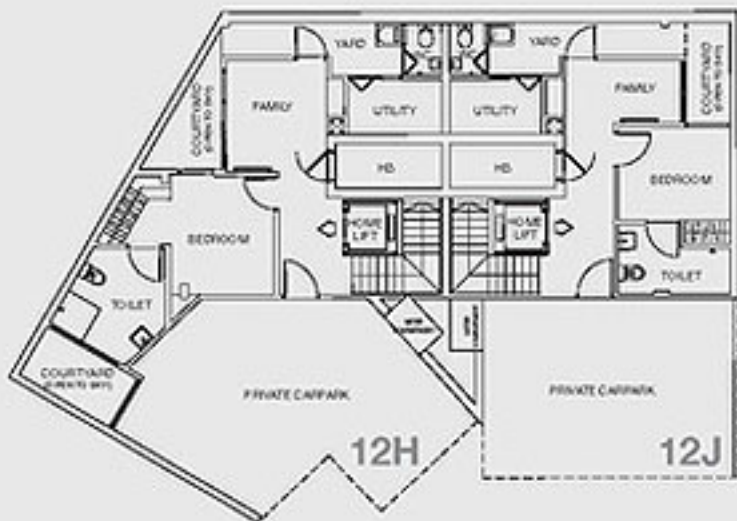
2nd storey



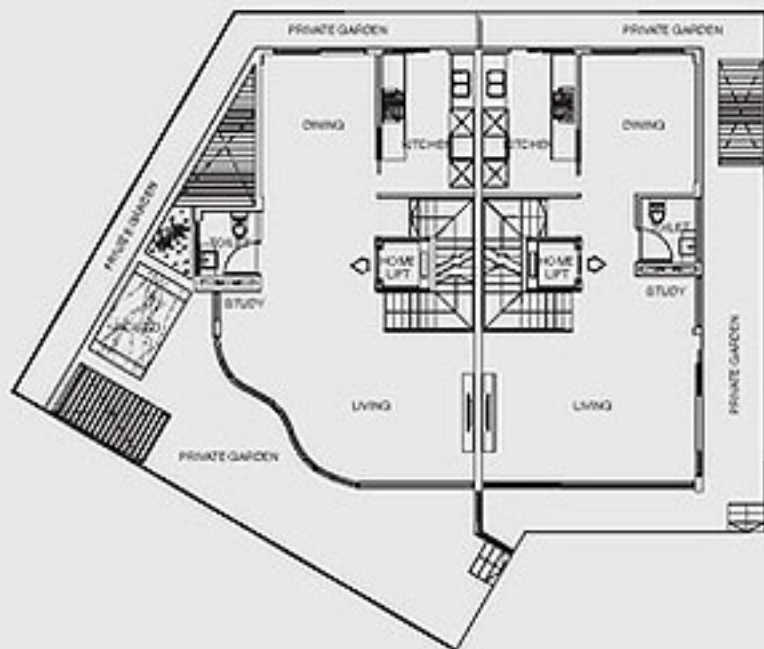
6th



Roof

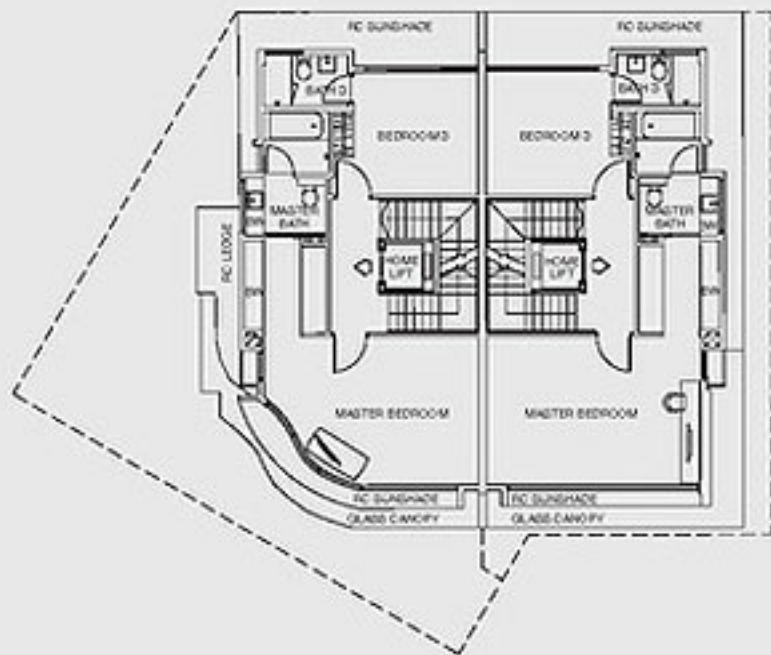


basement

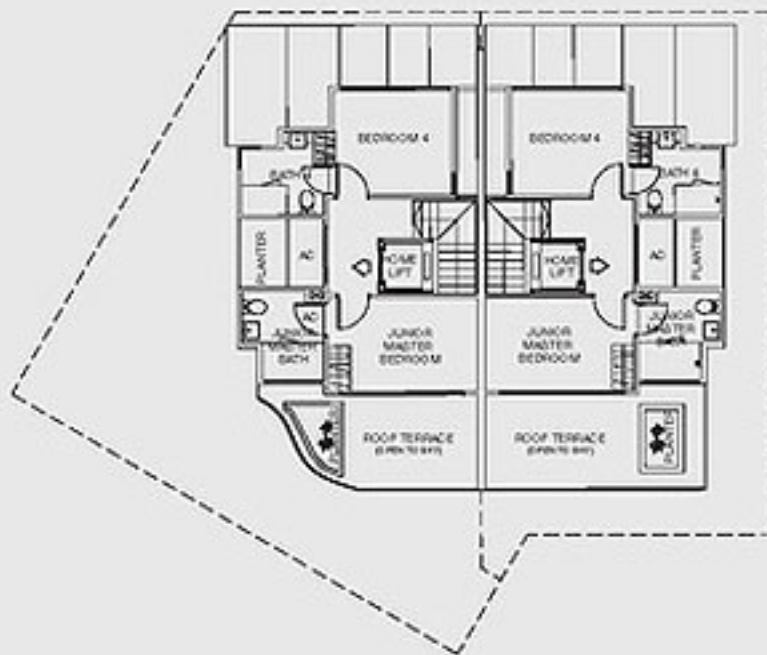


1st storey

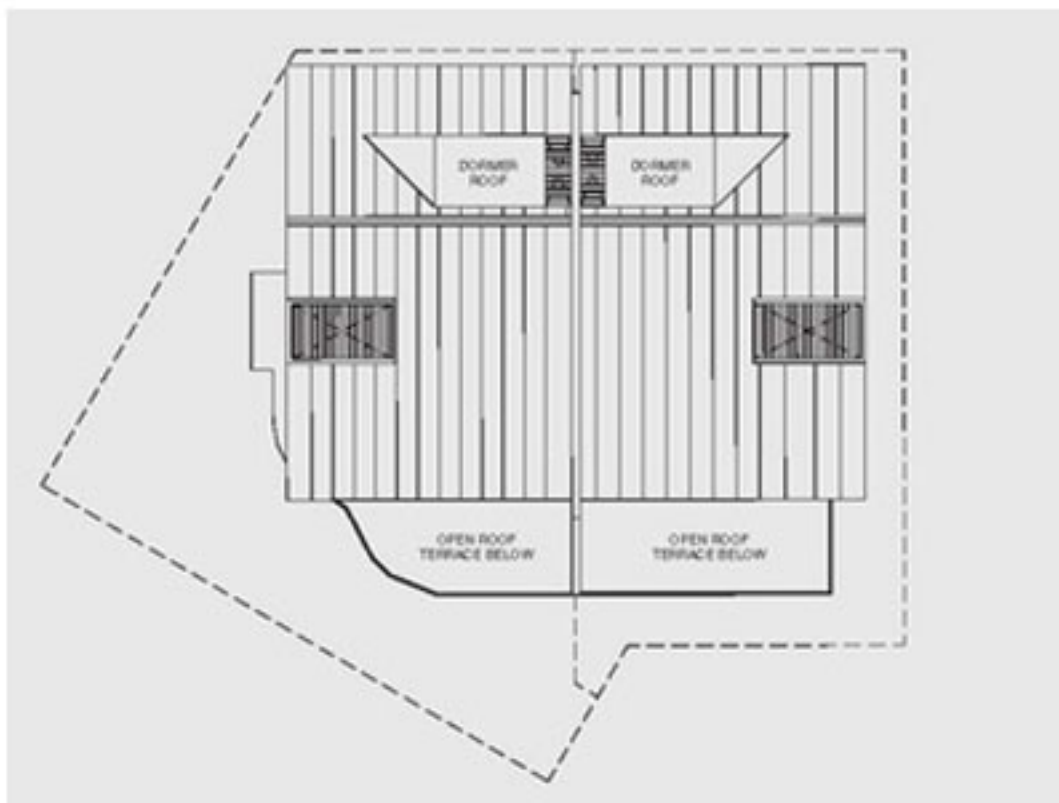
HOUSE NO. 12H
HOUSE NO. 12J

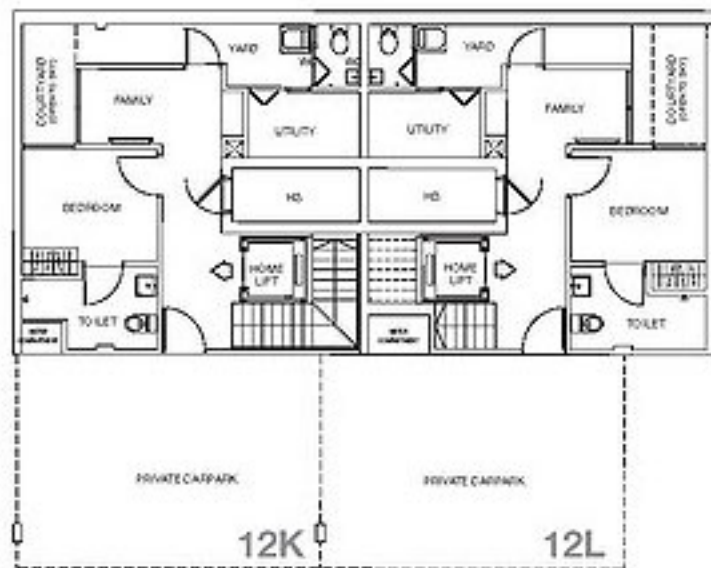


2nd story

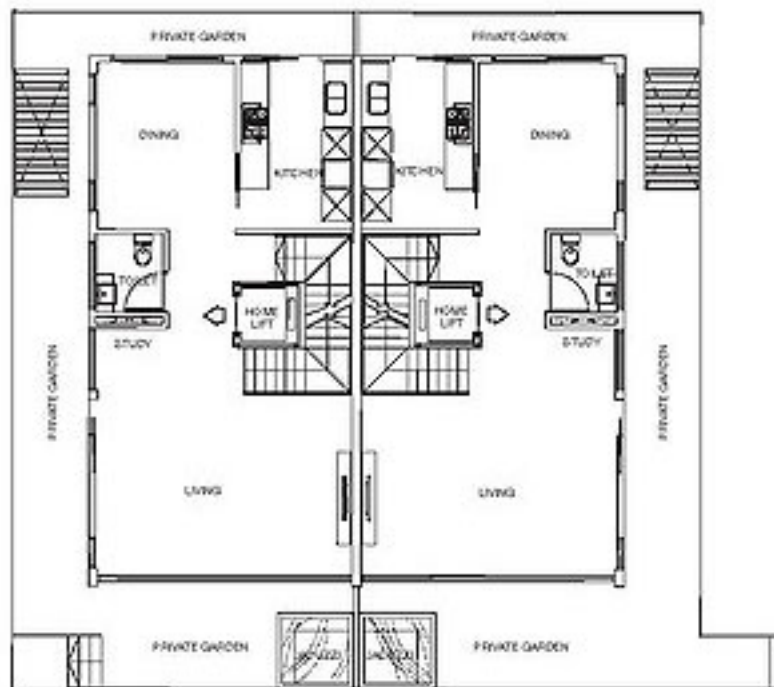


3rd



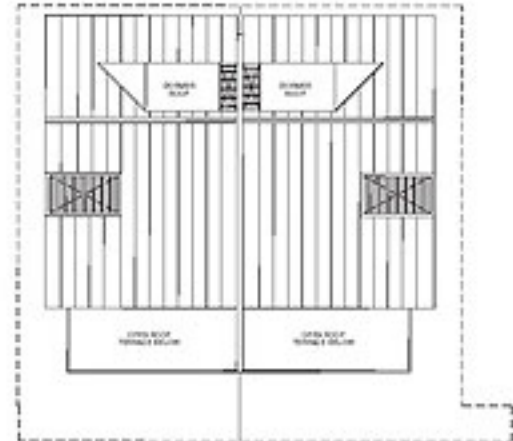
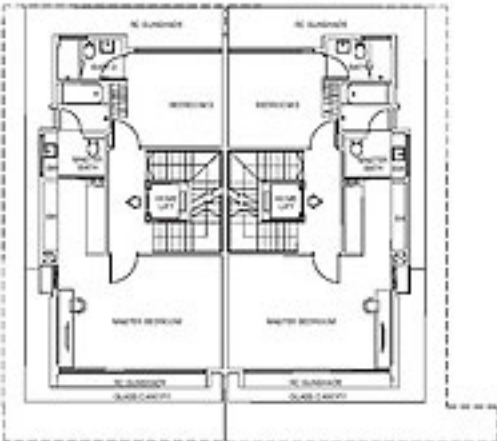


basement



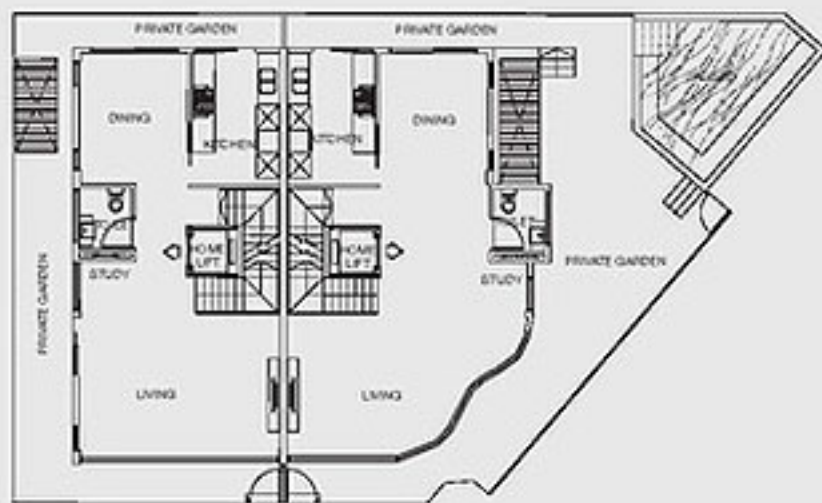
1st storey

HOUSE NO. 12K
HOUSE NO. 12L



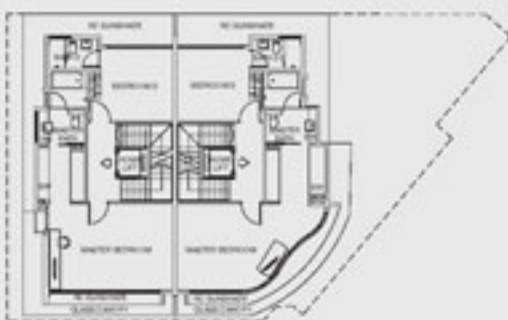


basement

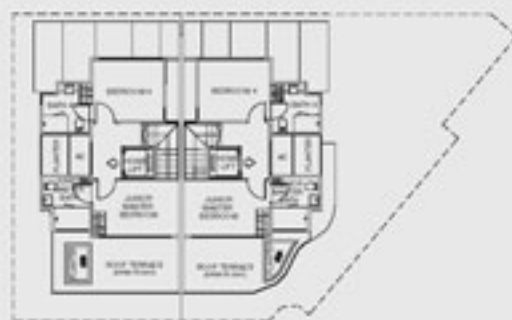


1st storey

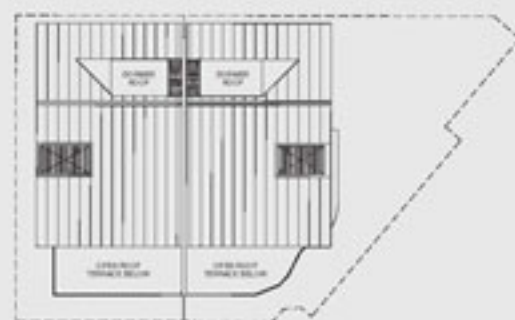
HOUSE NO. 12M
HOUSE NO. 12N



2nd story



3rd



4th



2nd story



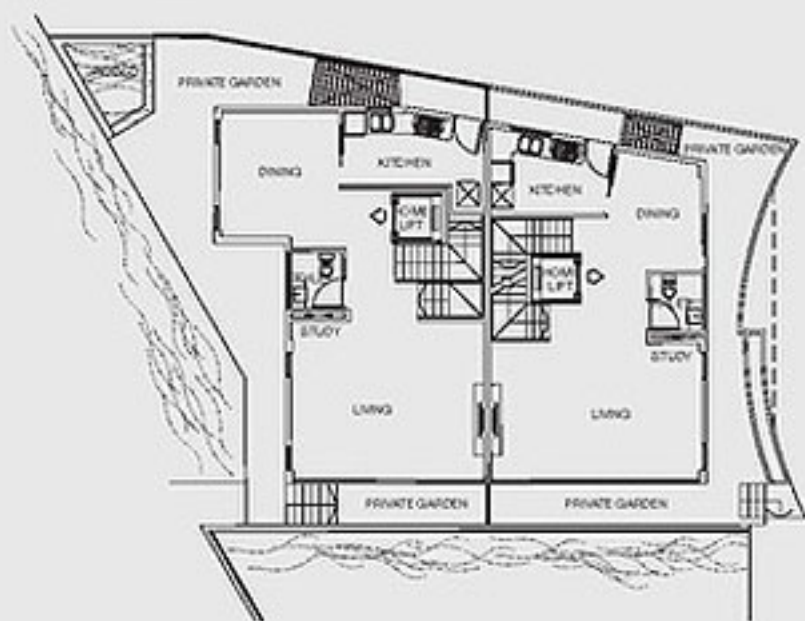
2nd



roof



basement



1st storey

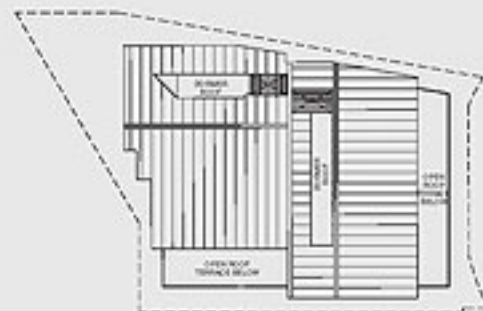
HOUSE NO. 12R
HOUSE NO. 12S



2nd story



3rd



roof