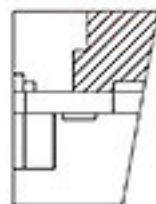


TYPE A
2nd - 12th storey



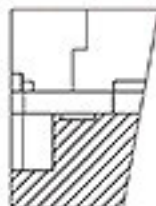
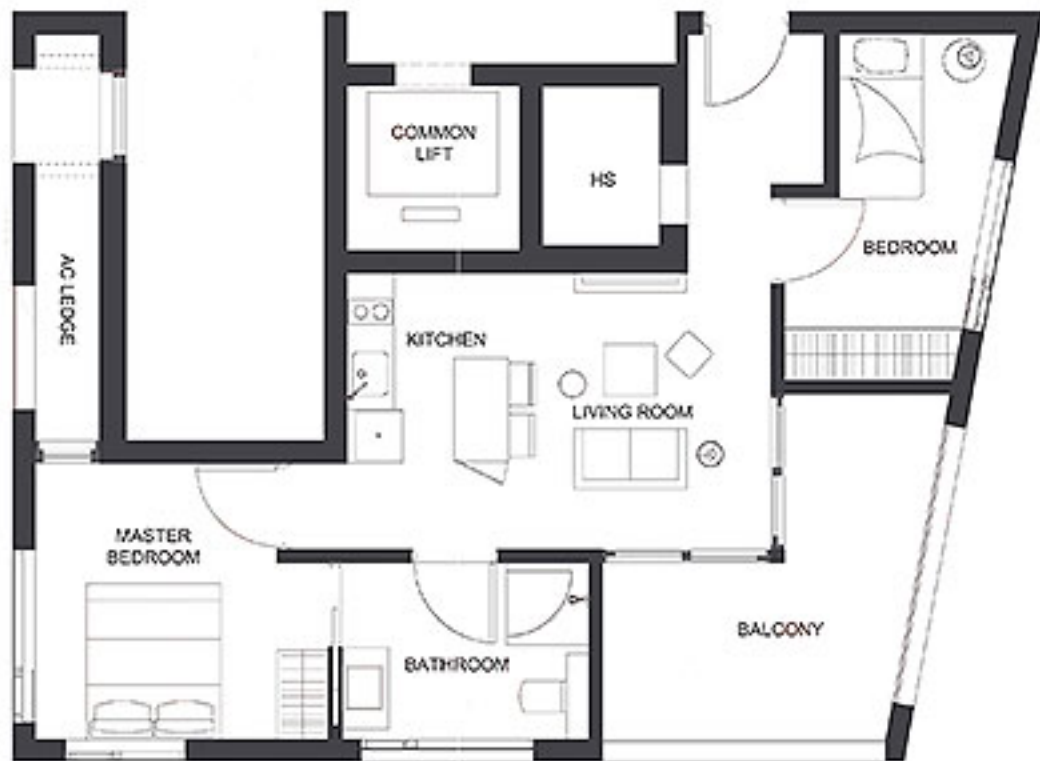
(Area = 41 sqm /441.3 sqft)



TYPE B
2nd - 11th storey



(Area = 44 sqm /473.6 sqft)

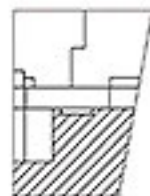


TYPE C1

3rd, 5th, 7th, 9th, 11th storey



(Area = 72 sqm / 775 sqft)

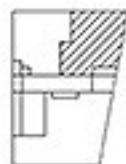


TYPE C2

2nd, 4th, 6th, 8th, 10th, 12th storey



(Area = 71 sqm / 764.2 sqft)



(Area = 44 sqm /473.6 sqft)



TYPE C3
12th storey



A I



(Area = 49 sqm /527.4 sqft)

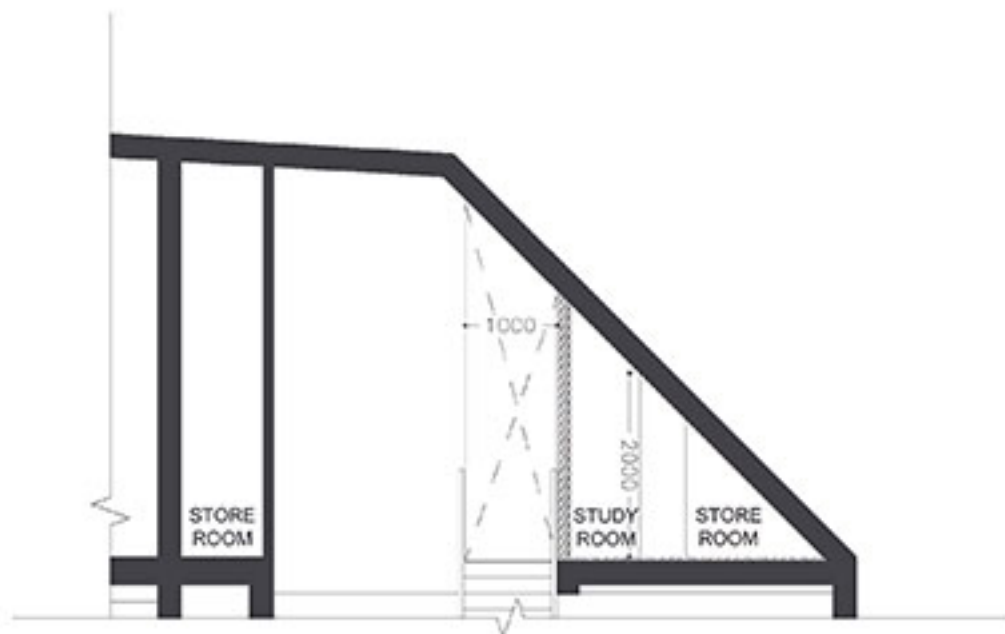


TYPE C3
Attic Storey



A I

(total approx area= 93 sqm/ 1001 sqft)



TYPE C3
Section A-A

