

TYPE A2 (1-Bedroom + 2-Bathroom)

Unit #06-33

(Mirrored)

#06-32, #06-34

Area 56 Sqm / 603 Sqft



LOWER STOREY



UPPER STOREY

This is just a draft floor plan, please kindly register your email in the website below to receive the full e-floorplan - Official New Launch

2ND STOREY



4TH STOREY



6TH STOREY



DUPLEX ISOMETRIC

TYPE A6-G (1-Bedroom + 2-Bathroom)

Unit #04-02, #04-04, #04-06

(Mirrored)

#04-03, #04-05, #04-08

Area 66 Sqm / 710 Sqft



UPPER STOREY



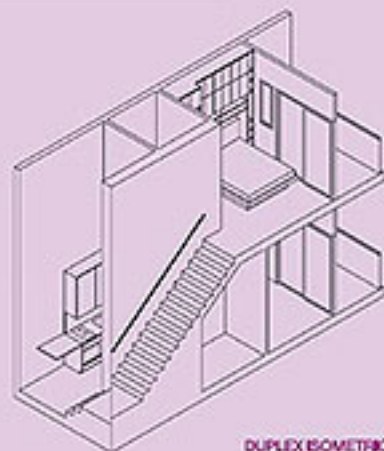
LOWER STOREY

This is just a draft floor plan, please kindly register your email in the website below to receive the full e-floorplan - Official New Launch

4th STOREY



6th STOREY



DUPLEX ISOMETRIC

All areas are inclusive of balcony and/or roof terrace and/or a/c ledge and/or stairs and area and/or planter, where applicable. All areas subject to final survey calculation.
Building Plan Approval Number: A140401001/2013-09/11 (Dated 03 January 2013)