

TYPE B1 3-BEDROOM PREMIUM

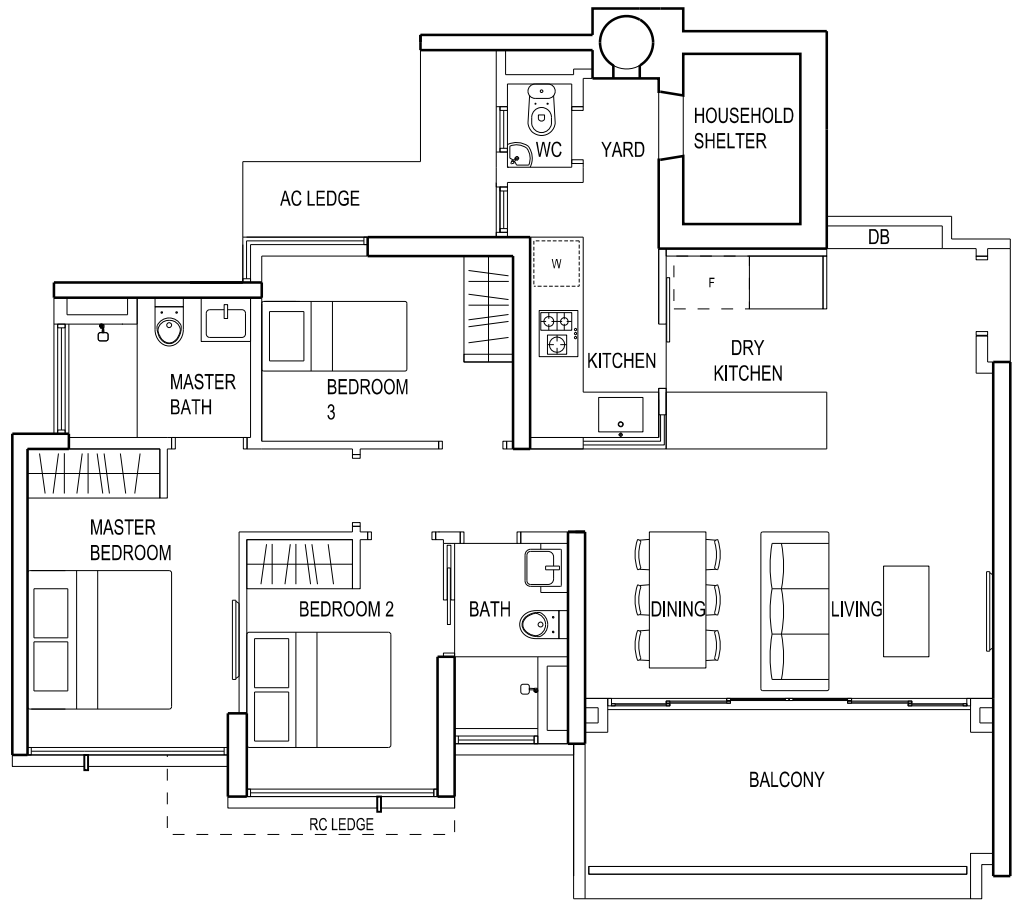
109 sq m / 1173 sq ft

#01-02 to #13-02

#02-03 to #13-03 (Mirror-Image)

#03-06 to #15-06

#03-07 to #15-07 (Mirror-Image)



FIN MODULE 1

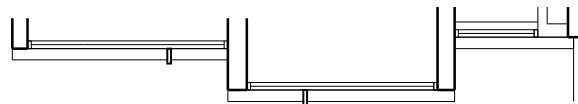
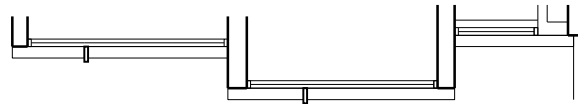
STACK 02	01, 04, 07, 10, 13
STACK 03	04, 07, 10, 13
STACK 06, 07	03, 06, 09, 12, 15

FIN MODULE 2

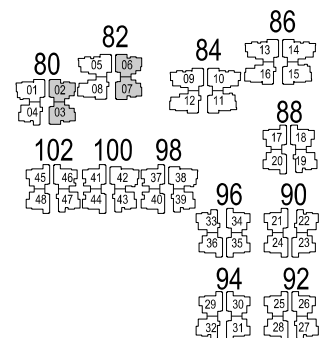
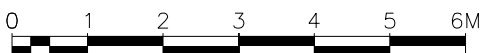
STACK 02, 03	03, 06, 09, 12
STACK 06, 07	05, 08, 11, 14

FIN MODULE 3

STACK 02, 03	02, 05, 08, 11
STACK 06, 07	04, 07, 10, 13



NOTE:
 #11-02, #12-02 - 3.30M FLOOR-TO-FLOOR HEIGHT
 #11-03, #12-03
 #13-06, #14-06
 #13-07, #14-07
 #13-02, #13-03
 #15-06, #15-07 - 3.60M FLOOR-TO-FLOOR HEIGHT (BELOW ROOF TOP)



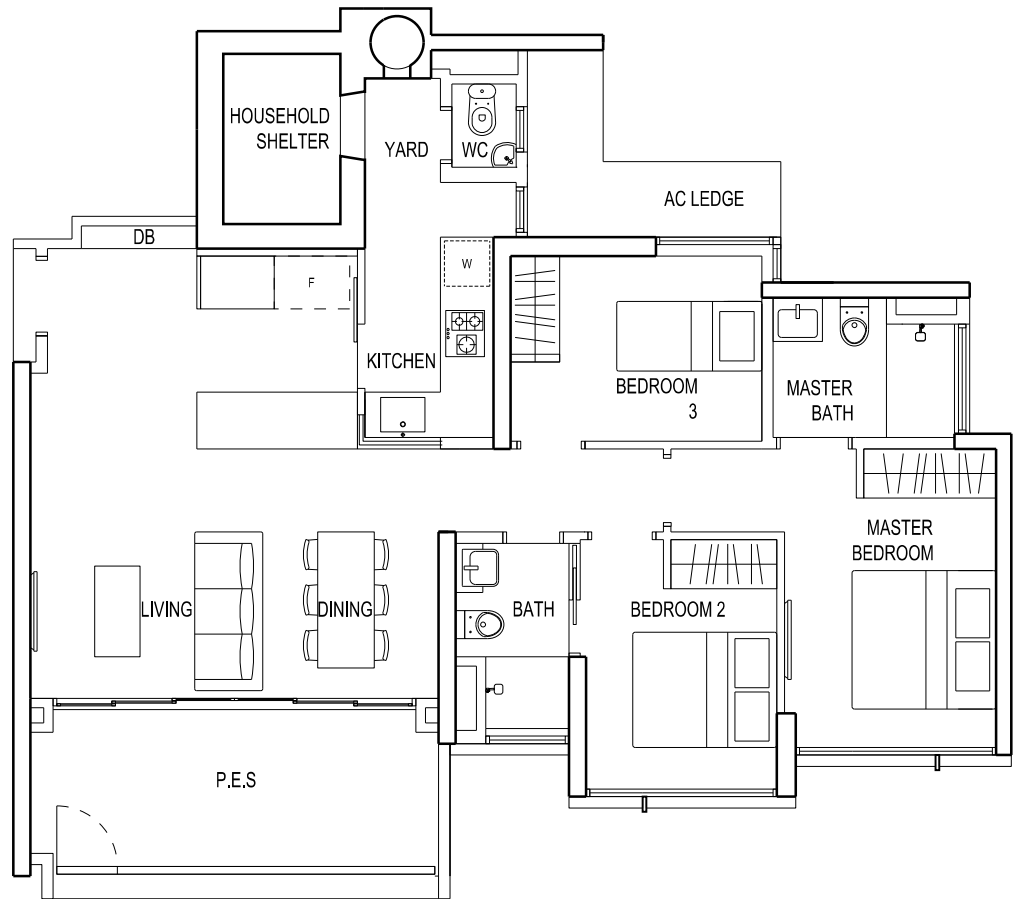
*THE ABOVE PLANS ARE SUBJECT TO CHANGE AS MAY BE REQUIRED BY THE RELEVANT AUTHORITY.
 **RC LEDGE ALTERNATES IN EVERY 3 FLOORS



TYPE B1g
3-BEDROOM PREMIUM

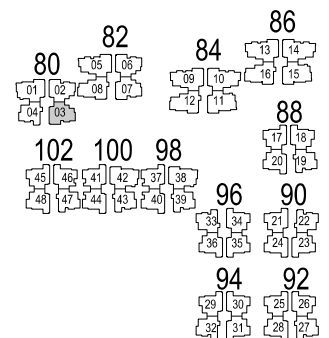
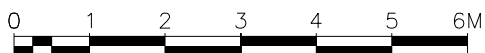
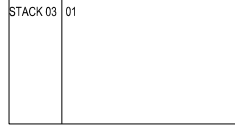
109 sq m / 1173 sq ft

#01-03



FIN MODULE 1

STACK 03 | 01



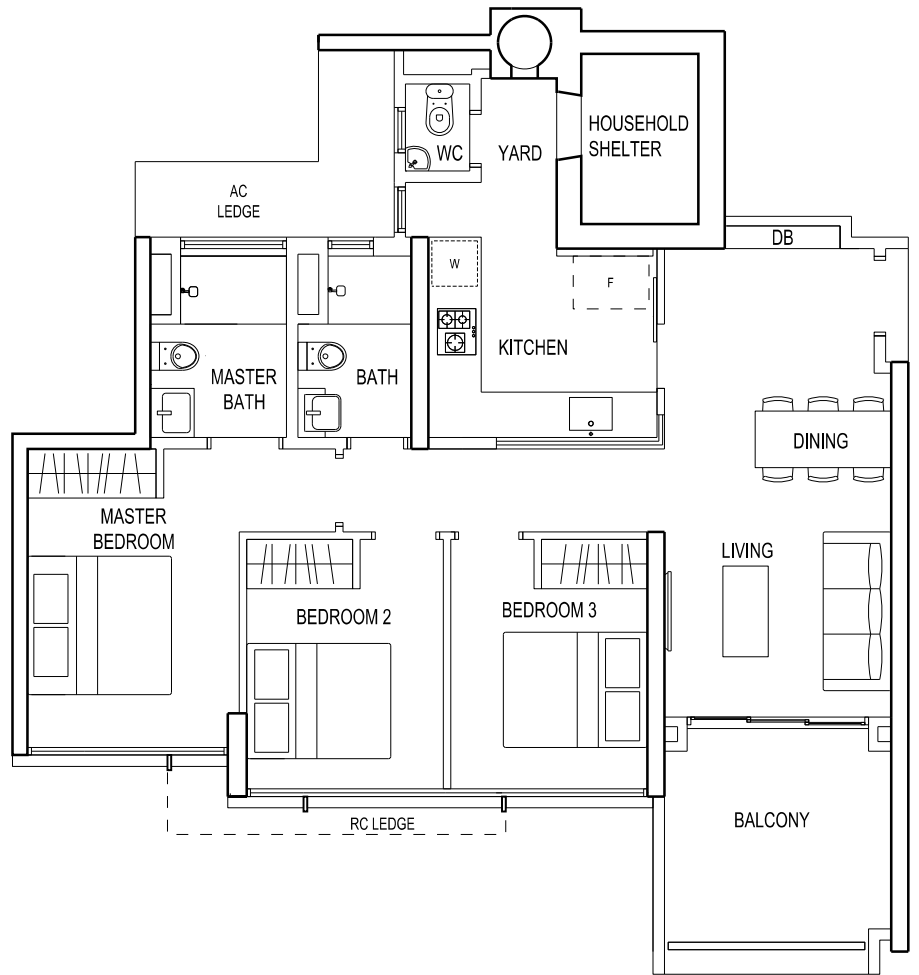
*THE ABOVE PLANS ARE SUBJECT TO CHANGE AS MAY BE REQUIRED BY THE RELEVANT AUTHORITY.
**RC LEDGE ALTERNATES IN EVERY 3 FLOORS



TYPE B2 3-BEDROOM PREMIUM

100 sq m / 1076 sq ft

- | | |
|---------------------------------|---------------------------------|
| #02-17 to #17-17 (Mirror-Image) | #04-29 to #17-29 (Mirror-Image) |
| #02-18 to #17-18 | #04-30 to #17-30 |
| #02-20 to #17-20 | #03-31 to #17-31 (Mirror-Image) |
| #03-21 to #17-21 (Mirror-Image) | #03-34 to #17-34 |
| #04-23 to #17-23 (Mirror-Image) | #04-35 to #17-35 (Mirror-Image) |
| #04-24 to #17-24 | #04-36 to #17-36 |
| #04-25 to #17-25 (Mirror-Image) | #03-45 to #17-45 (Mirror-Image) |
| #04-26 to #17-26 | #03-48 to #17-48 |
| #03-28 to #17-28 | |



FIN MODULE 1

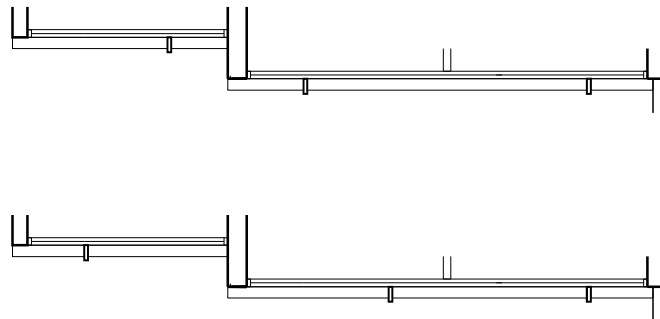
STACK 21	05, 08, 11, 14, 17 23, 24, 25 26, 28, 29 30, 31, 34 35, 36, 45, 48
STACK 17	02, 05, 08, 11, 14, 17 18, 20

FIN MODULE 2

STACK 17	04, 07, 10, 13, 16 18, 20, 21 23, 24, 25 26, 28, 29 30, 31, 34 35, 36, 45, 48
----------	---

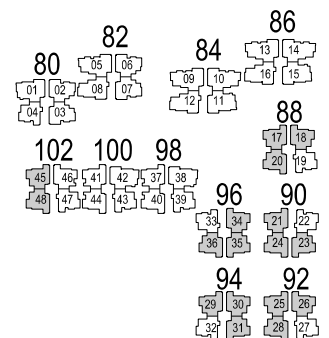
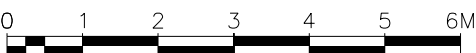
FIN MODULE 3

STACK 17	03, 06, 09, 12, 15 18, 20, 21 28, 31, 34, 45, 48
STACK 23	08, 09, 12, 15 24, 25, 26, 29, 30, 35, 36



NOTE:

#17-17, 18, 20, 21, 23, 24, 25, 26, 28, 29, 30, 31, 34, 35, 36, 45, 48 - 3.25M FLOOR-TO-FLOOR HEIGHT (BELOW ROOF TOP)

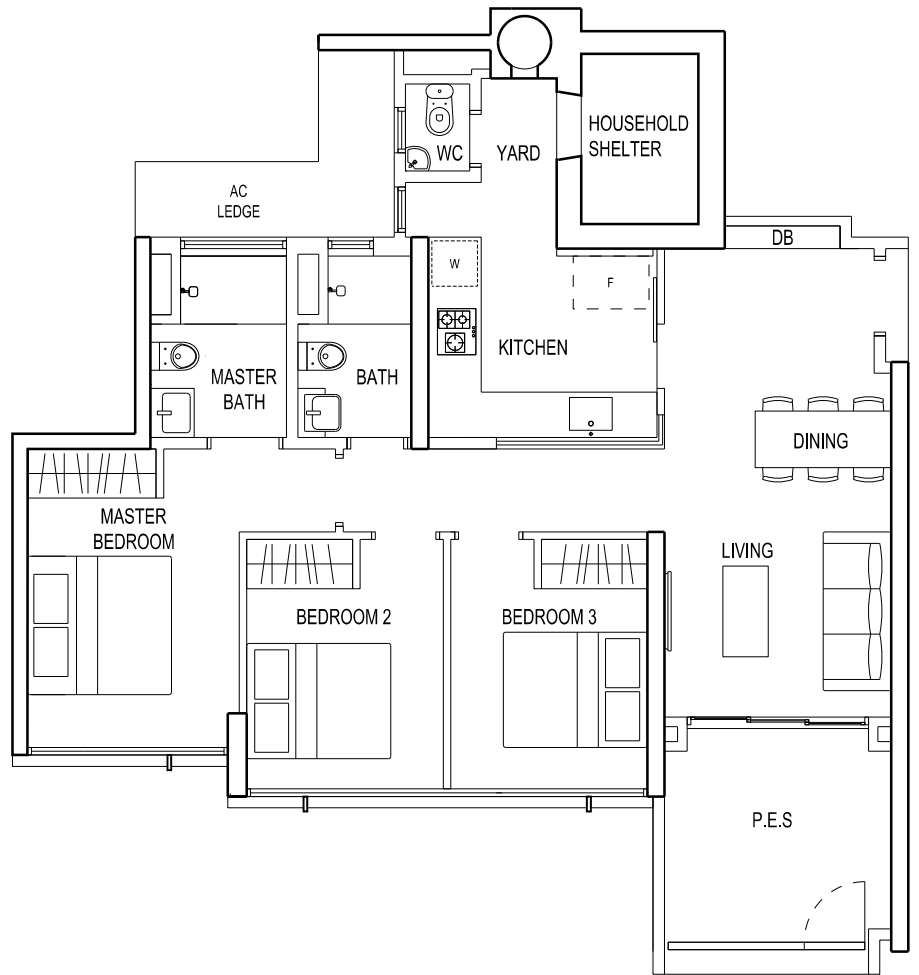


*THE ABOVE PLANS ARE SUBJECT TO CHANGE AS MAY BE REQUIRED BY THE RELEVANT AUTHORITY.
** RC LEDGE ALTERNATES IN EVERY 3 FLOORS

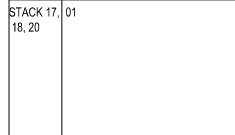


TYPE B2g
3-BEDROOM PREMIUM
 100 sq m / 1076 sq ft

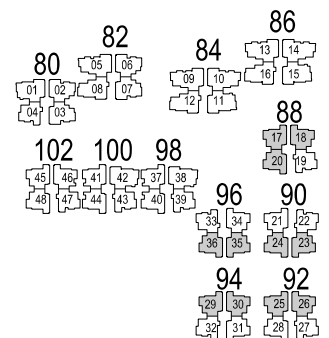
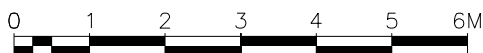
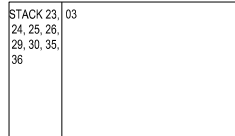
- #01-17 (Mirror-image)
- #01-18
- #01-20
- #03-23 (Mirror-image)
- #03-24
- #03-25 (Mirror-image)
- #03-26
- #03-29 (Mirror-image)
- #03-30
- #03-35 (Mirror-image)
- #03-36



FIN MODULE 2



FIN MODULE 3



*THE ABOVE PLANS ARE SUBJECT TO CHANGE AS MAY BE REQUIRED BY THE RELEVANT AUTHORITY.
 **RC LEDGE ALTERNATES IN EVERY 3 FLOORS



TYPE B3 3-BEDROOM PREMIUM

100 sq m / 1076 sq ft

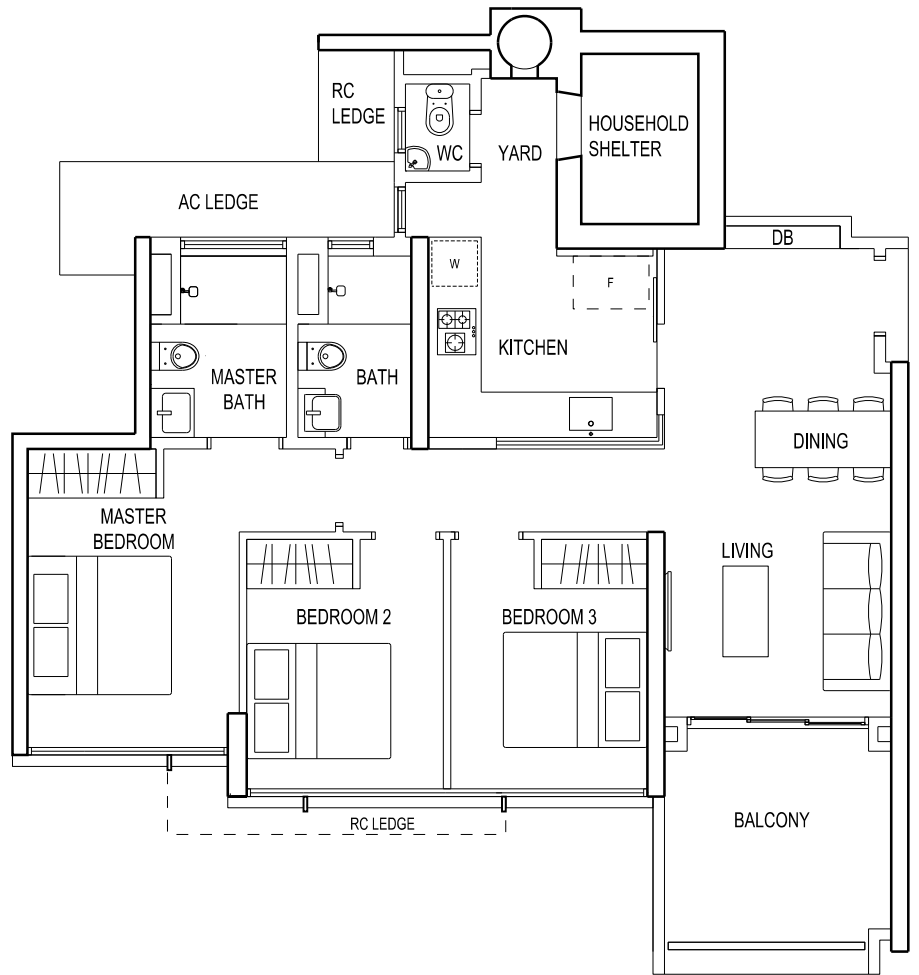
#02-37 to #17-37 (Mirror-Image)

#02-40 to #17-40

#02-41 to #17-41 (Mirror-Image)

#02-44 to #17-44

#02-46 to #17-46



FIN MODULE 1

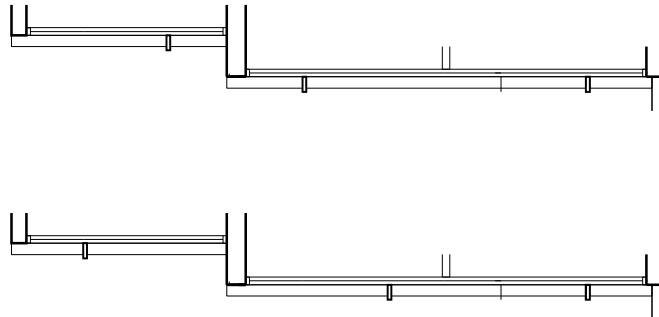
STACK 37, 02, 05, 08, 11, 14, 17
40, 41, 44,
46

FIN MODULE 2

STACK 37, 04, 07, 10, 13, 16
40, 41, 44,
46

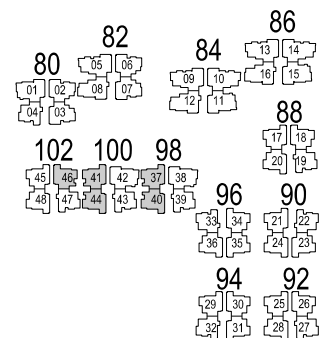
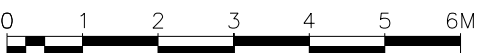
FIN MODULE 3

STACK 37, 03, 06, 09, 12, 15
40, 41, 44,
46



NOTE:

#17-37, 40, 41, 44, 46 - 3.25M FLOOR-TO-FLOOR HEIGHT (BELOW ROOF TOP)



*THE ABOVE PLANS ARE SUBJECT TO CHANGE AS MAY BE REQUIRED BY THE RELEVANT AUTHORITY.
**RC LEDGE ALTERNATES IN EVERY 3 FLOORS



TYPE B3g 3-BEDROOM PREMIUM

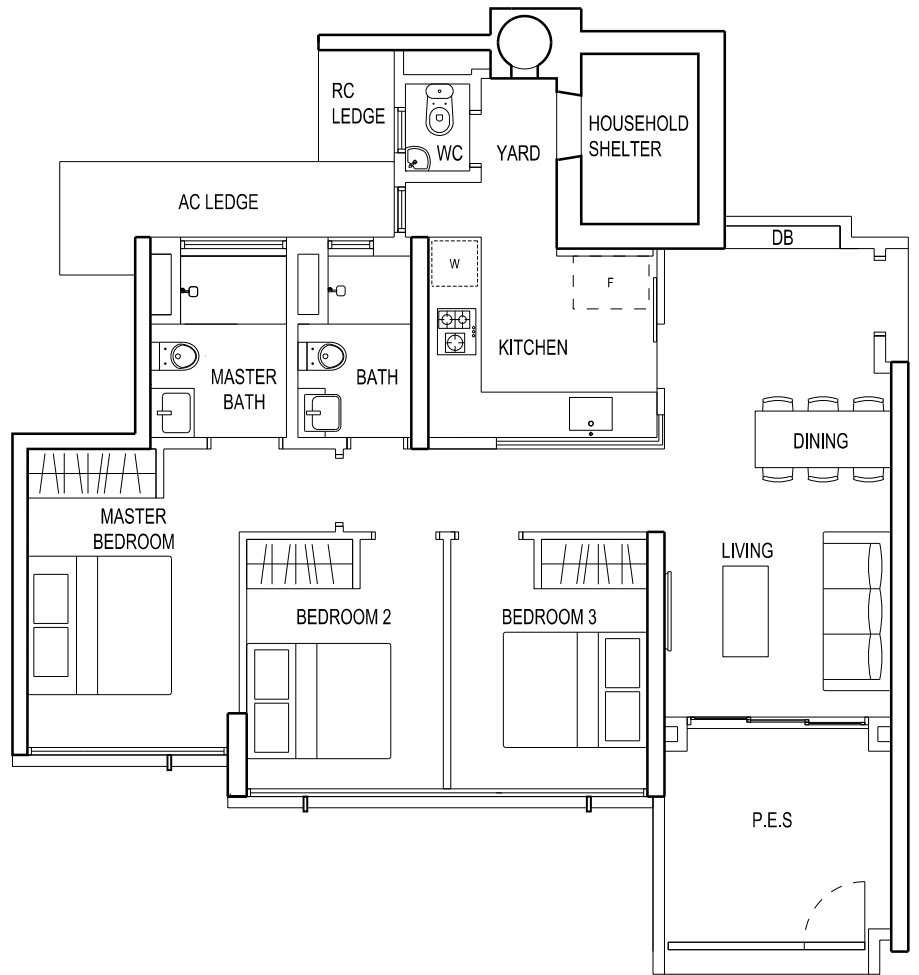
100 sq m / 1076 sq ft

#01-37 (Mirror-Image)

#01-40

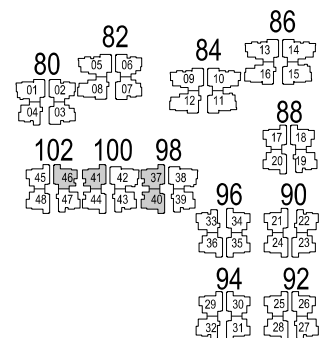
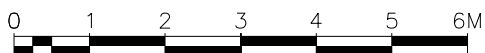
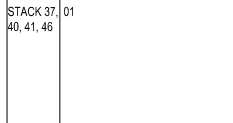
#01-41 (Mirror-Image)

#01-46



FIN MODULE 2

STACK 37, 01
40, 41, 46



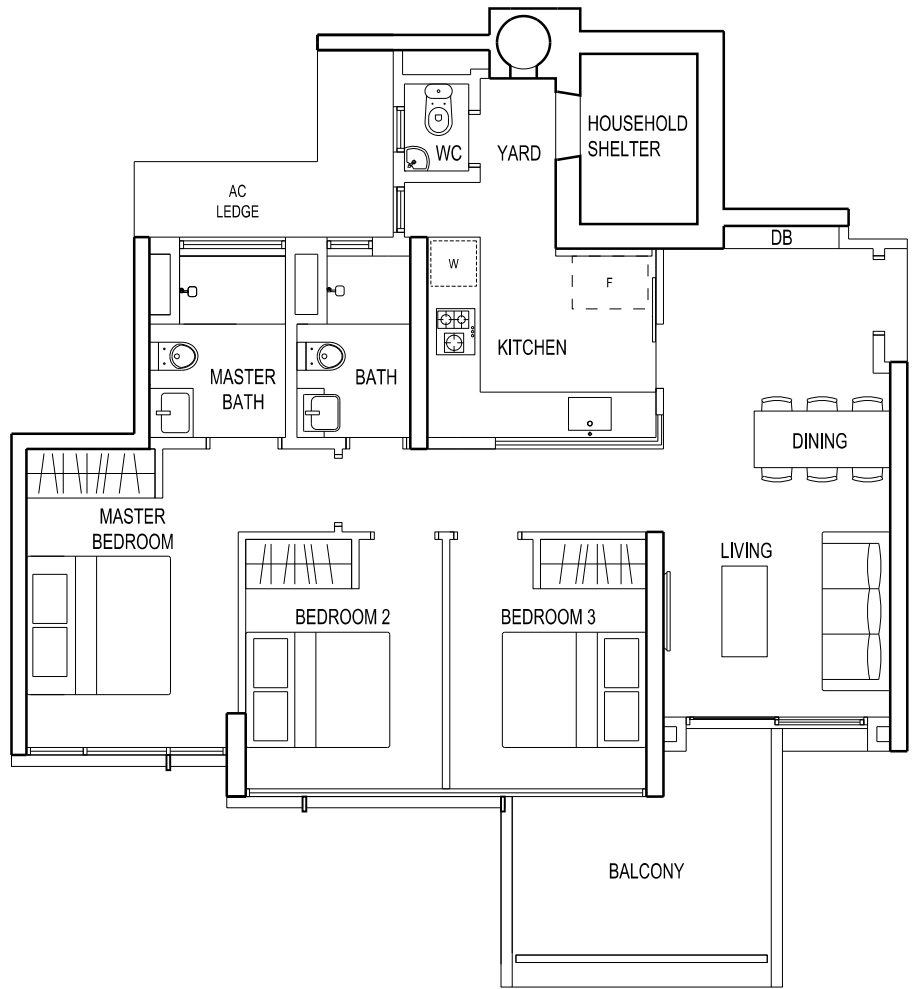
*THE ABOVE PLANS ARE SUBJECT TO CHANGE AS MAY BE REQUIRED BY THE RELEVANT AUTHORITY.
**RC LEDGE ALTERNATES IN EVERY 3 FLOORS



TYPE B4
3-BEDROOM PREMIUM
 100 sq m / 1076 sq ft

#02-21 (Mirror-Image)

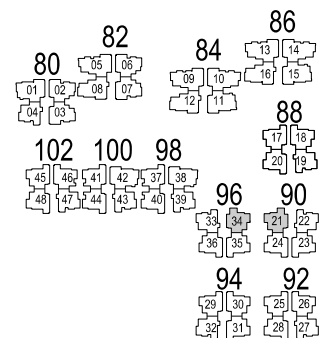
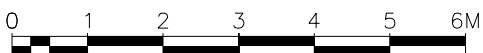
#02-34



FIN MODULE 1

STACK 21, 02
 34

NOTE:
 #02-21, #02-34 - 3.75M FLOOR-TO-FLOOR HEIGHT

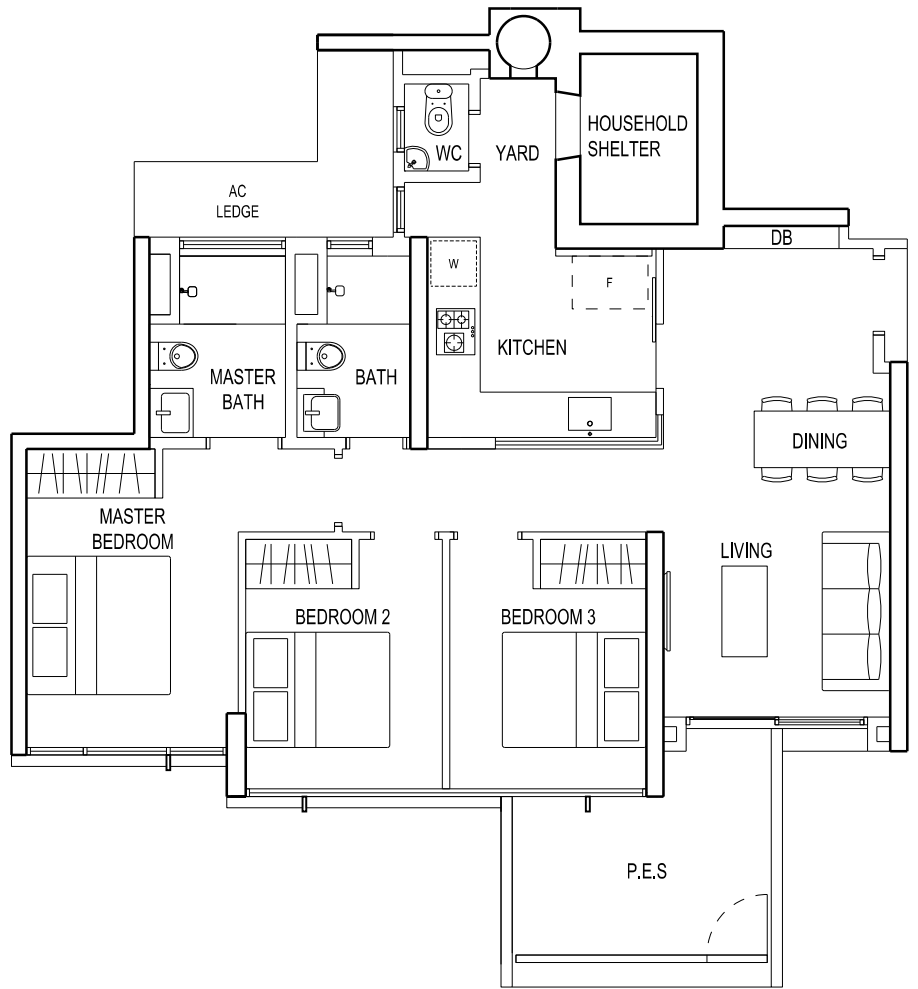


*THE ABOVE PLANS ARE SUBJECT TO CHANGE AS MAY BE REQUIRED BY THE RELEVANT AUTHORITY.
 **RC LEDGE ALTERNATES IN EVERY 3 FLOORS

TYPE B4g
 3-BEDROOM PREMIUM
 100 sq m / 1076 sq ft

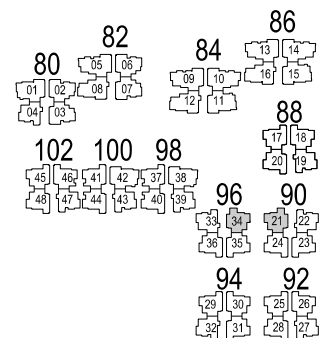
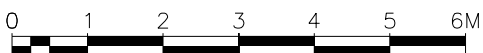
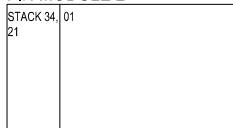
#01-21 (Mirror-Image)

#01-34



FIN MODULE 2

STACK 34, 01
 21



*THE ABOVE PLANS ARE SUBJECT TO CHANGE AS MAY BE REQUIRED BY THE RELEVANT AUTHORITY.
 **RC LEDGE ALTERNATES IN EVERY 3 FLOORS

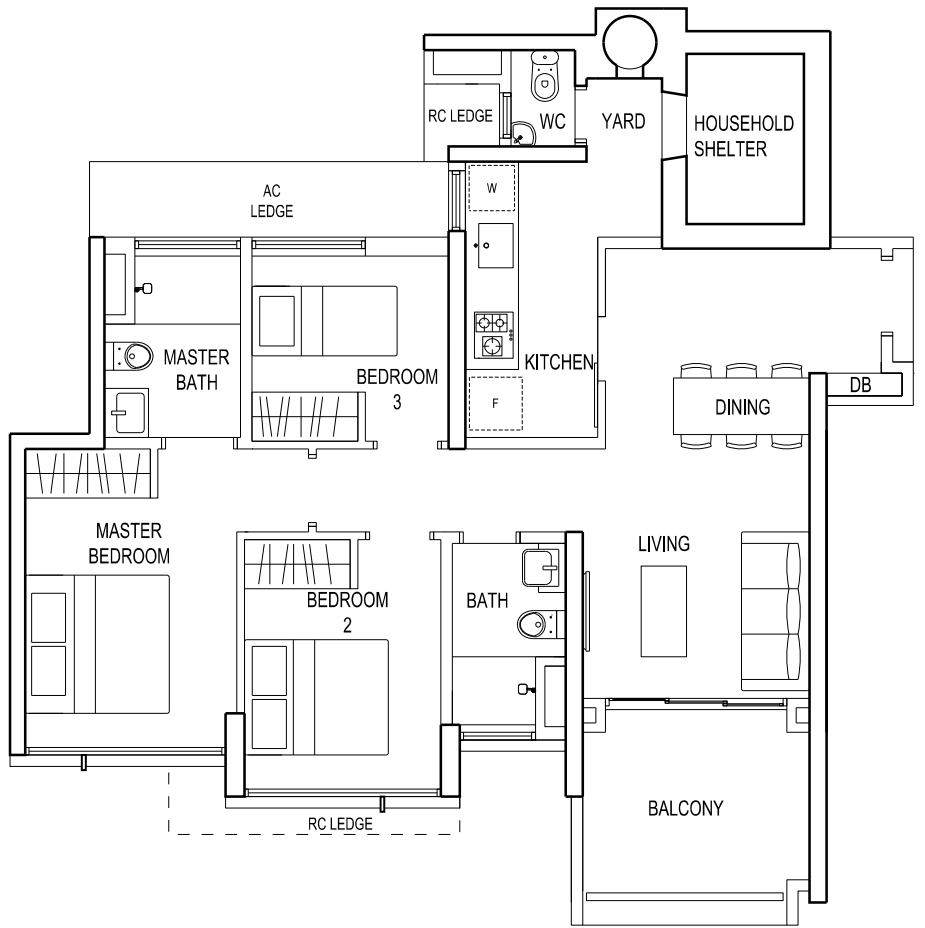


TYPE A

3-BEDROOM

93 sq m / 1001 sq ft

- #02-04 to #13-04
- #02-19 to #17-19 (Mirror-Image)
- #02-22 to #17-22
- #03-27 to #17-27 (Mirror-Image)
- #03-32 to #17-32
- #02-33 to #17-33 (Mirror-Image)
- #02-39 to #17-39 (Mirror-Image)
- #02-43 to #17-43 (Mirror-Image)
- #02-47 to #17-47 (Mirror-Image)



FIN MODULE 1

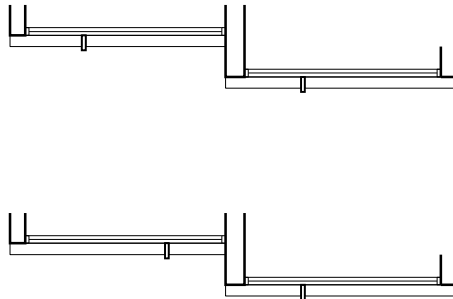
STACK 04	04, 07, 10, 13
STACK 19	02, 05, 08, 11, 14, 17, 22, 33, 39, 43, 47
STACK 27	05, 08, 11, 14, 17, 32

FIN MODULE 2

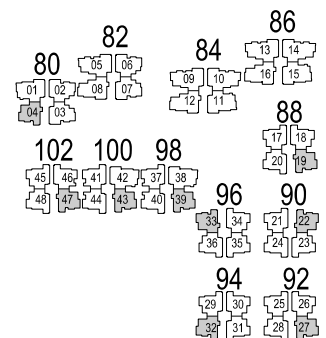
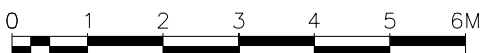
STACK 04	03, 06, 09, 12
STACK 19	04, 07, 10, 13, 16, 22, 27, 32, 33, 39, 43, 47

FIN MODULE 3

STACK 04	02, 05, 08, 11
STACK 19	03, 06, 09, 12, 15, 22, 27, 32, 33, 39, 43, 47



NOTE:
 #11-04 & #12-04 - 3.30M FLOOR-TO-FLOOR HEIGHT
 #13-04 - 3.60M FLOOR-TO-FLOOR HEIGHT (BELOW ROOF TOP)
 #02-22 & #02-33 - 3.75M FLOOR-TO-FLOOR HEIGHT
 #17-19, 22, 27, 32, - 3.25M FLOOR-TO-FLOOR HEIGHT (BELOW ROOF TOP)
 33, 39, 43, 47



*THE ABOVE PLANS ARE SUBJECT TO CHANGE AS MAY BE REQUIRED BY THE RELEVANT AUTHORITY.
 **RC LEDGE ALTERNATES IN EVERY 3 FLOORS



TYPE Ag
 3-BEDROOM
 93 sq m / 1001 sq ft

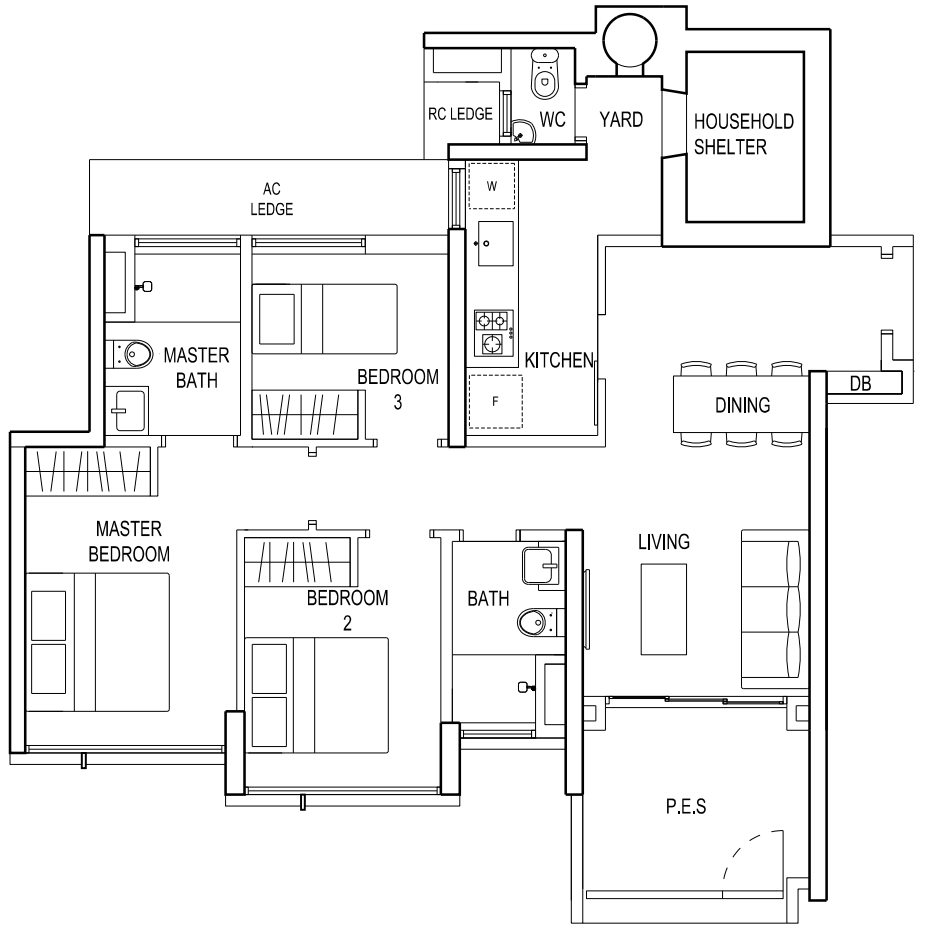
#01-19 (Mirror-image)

#01-22

#01-33 (Mirror-image)

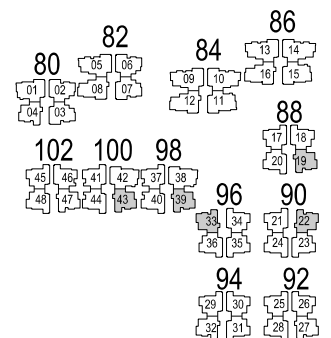
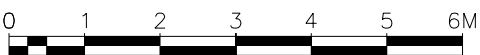
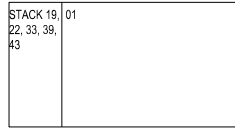
#01-39 (Mirror-image)

#01-43 (Mirror-image)



FIN MODULE 2

STACK 19, 01
 22, 33, 39,
 43



*THE ABOVE PLANS ARE SUBJECT TO CHANGE AS MAY BE REQUIRED BY THE RELEVANT AUTHORITY.
 **RC LEDGE ALTERNATES IN EVERY 3 FLOORS



TYPE D 4-BEDROOM PREMIUM

134 sq m / 1442 sq ft

#02-05 to #13-05 (Mirror-Image)

#01-09 to #15-09 (Mirror-Image)

#01-10 to #15-10

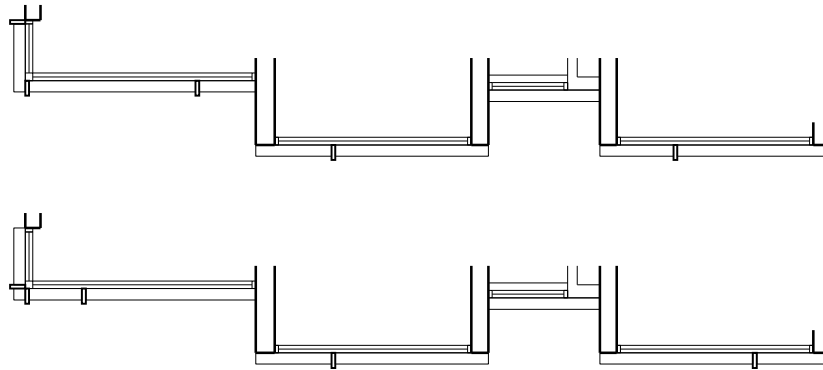
#03-13 to #14-13 (Mirror-Image)

#02-14 to #14-14



FIN MODULE 1

STACK 05	03, 06, 09, 12
STACK 09	02, 05, 08, 11, 14
STACK 13	04, 07, 10, 13



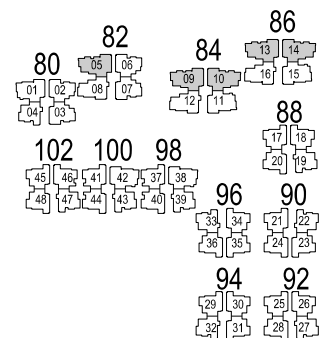
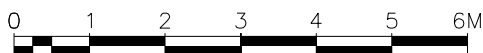
FIN MODULE 2

STACK 05	02, 05, 08, 11
STACK 09	01, 04, 07, 10, 13
STACK 13	03, 06, 09, 12

FIN MODULE 3

STACK 05	04, 07, 10, 13
STACK 09	03, 06, 09, 12, 15
STACK 13	05, 08, 11, 14
STACK 14	02, 05, 08, 11, 14

NOTE:
#13-05, #15-09, #14-13, #14-14 - 3.30M FLOOR-TO-FLOOR HEIGHT



*THE ABOVE PLANS ARE SUBJECT TO CHANGE AS MAY BE REQUIRED BY THE RELEVANT AUTHORITY.
**RC LEDGE ALTERNATES IN EVERY 3 FLOORS



TYPE C1
4-BEDROOM
 122 sq m / 1313 sq ft

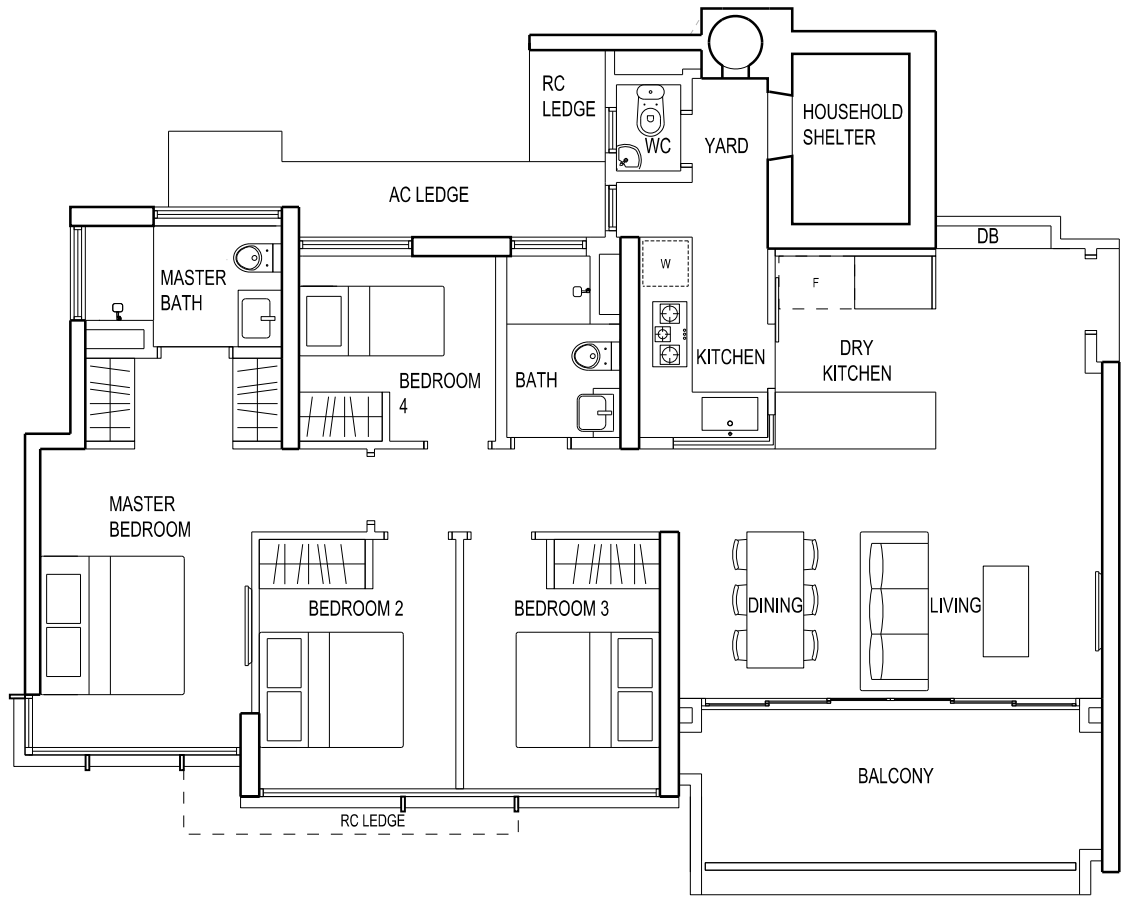
#03-01 to #13-01 (Mirror-Image)

#02-11 to #17-11 (Mirror-Image)

#02-15 to #16-15 (Mirror-Image)

#02-38 to #17-38

#02-42 to #17-42



FIN MODULE 1

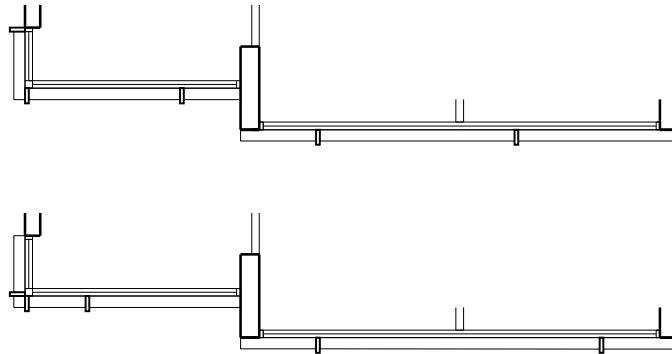
STACK 01	04, 07, 10, 13
STACK 11	02, 05, 08, 11, 14, 17, 38, 42
STACK 15	04, 07, 10, 13, 16

FIN MODULE 2

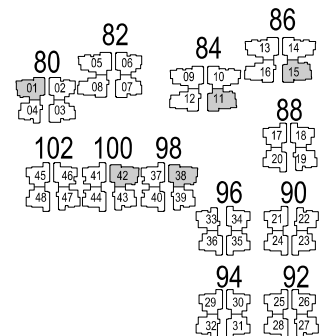
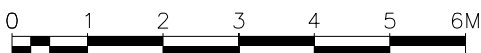
STACK 01	03, 06, 09, 12
STACK 11	04, 07, 10, 13, 16, 38, 42
STACK 15	03, 06, 09, 12, 15

FIN MODULE 3

STACK 01	05, 08, 11
STACK 11	03, 06, 09, 12, 15, 38, 42
STACK 15	02, 05, 08, 11, 14



- NOTE:**
- #11-01, #12-01, #15-11, #16-11 - 3.30M FLOOR-TO-FLOOR HEIGHT
 - #14-15, #15-15, #13-01, #17-11 - 3.60M FLOOR-TO-FLOOR HEIGHT (BELOW ROOF TOP)
 - #16-15, #17-38, 42 - 3.25M FLOOR-TO-FLOOR HEIGHT (BELOW ROOF TOP)

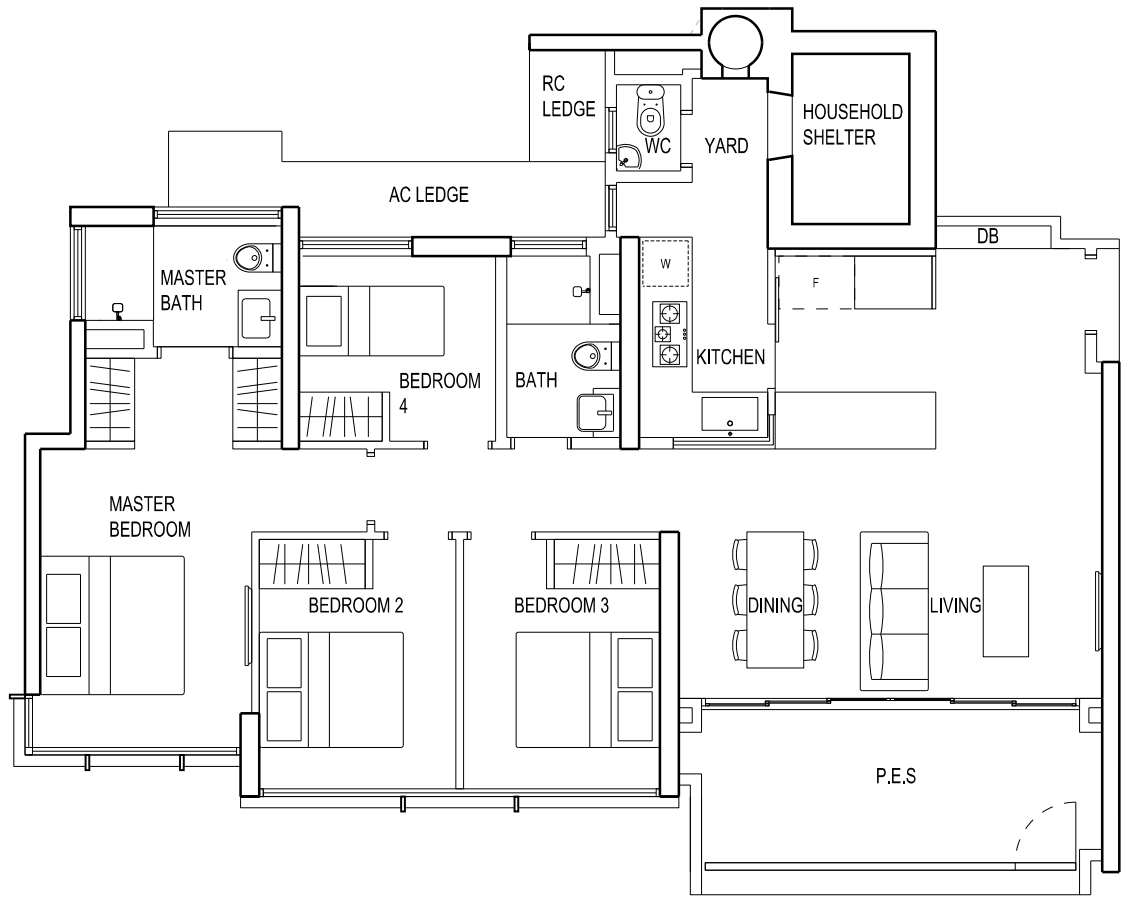


*THE ABOVE PLANS ARE SUBJECT TO CHANGE AS MAY BE REQUIRED BY THE RELEVANT AUTHORITY.
 **RC LEDGE ALTERNATES IN EVERY 3 FLOORS

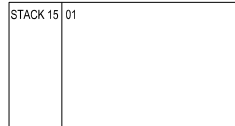


TYPE C1g
 4-BEDROOM
 122 sq m / 1313 sq ft

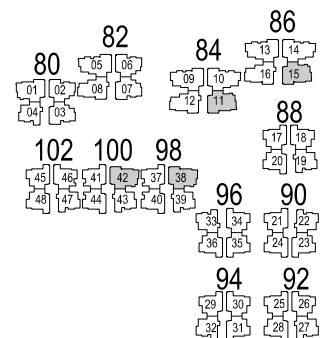
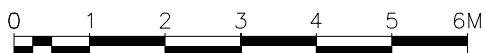
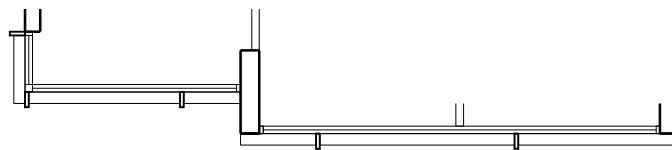
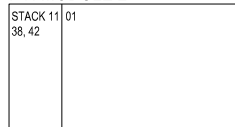
- #01-11 (Mirror-Image)
- #01-15 (Mirror-Image)
- #01-38
- #01-42



FIN MODULE 1



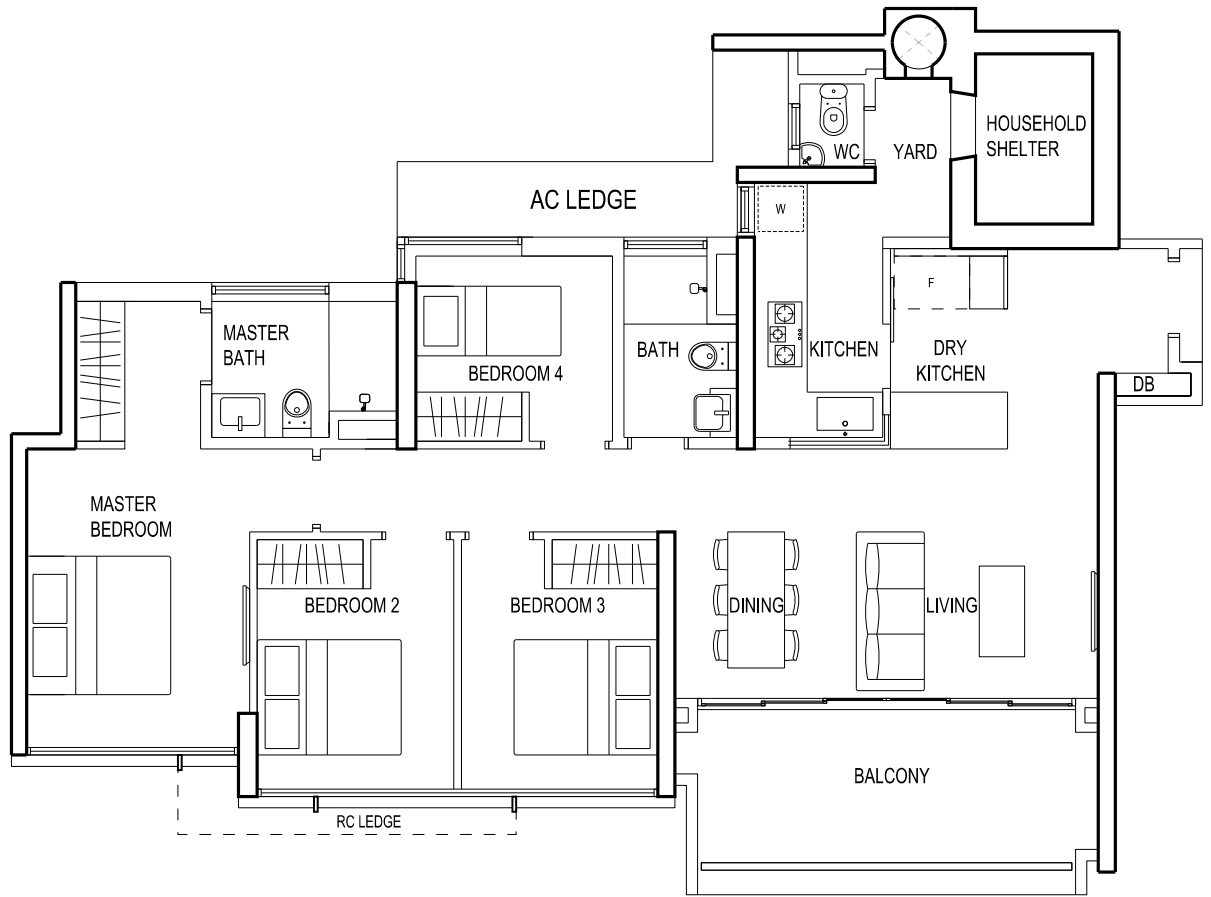
FIN MODULE 2



*THE ABOVE PLANS ARE SUBJECT TO CHANGE AS MAY BE REQUIRED BY THE RELEVANT AUTHORITY.
 **RC LEDGE ALTERNATES IN EVERY 3 FLOORS

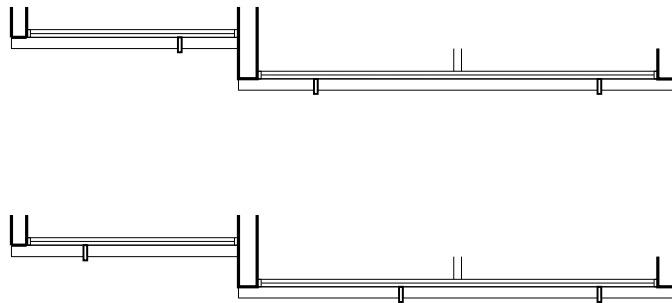
TYPE C2
4-BEDROOM
 122 sq m / 1313 sq ft

#02-08 to #15-08
 #02-12 to #17-12
 #02-16 to #16-16



FIN MODULE 1

STACK 08	03, 06, 09, 12, 15
STACK 12	02, 05, 08, 11, 14, 17
STACK 16	04, 07, 10, 13, 16



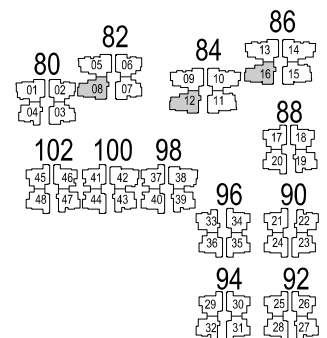
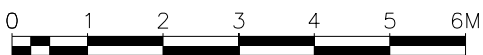
FIN MODULE 2

STACK 08	02, 05, 08, 11, 14
STACK 12	04, 07, 10, 13, 16
STACK 16	03, 06, 09, 12, 15

FIN MODULE 3

STACK 08	04, 07, 10, 13
STACK 12	03, 06, 09, 12, 15
STACK 16	02, 05, 08, 11, 14

NOTE:
 #13-08, #14-08 - 3.30M FLOOR-TO-FLOOR HEIGHT
 #15-12, #16-12
 #14-16, #15-16 - 3.60M FLOOR-TO-FLOOR HEIGHT (BELOW ROOF TOP)
 #15-08, #17-12, #16-16

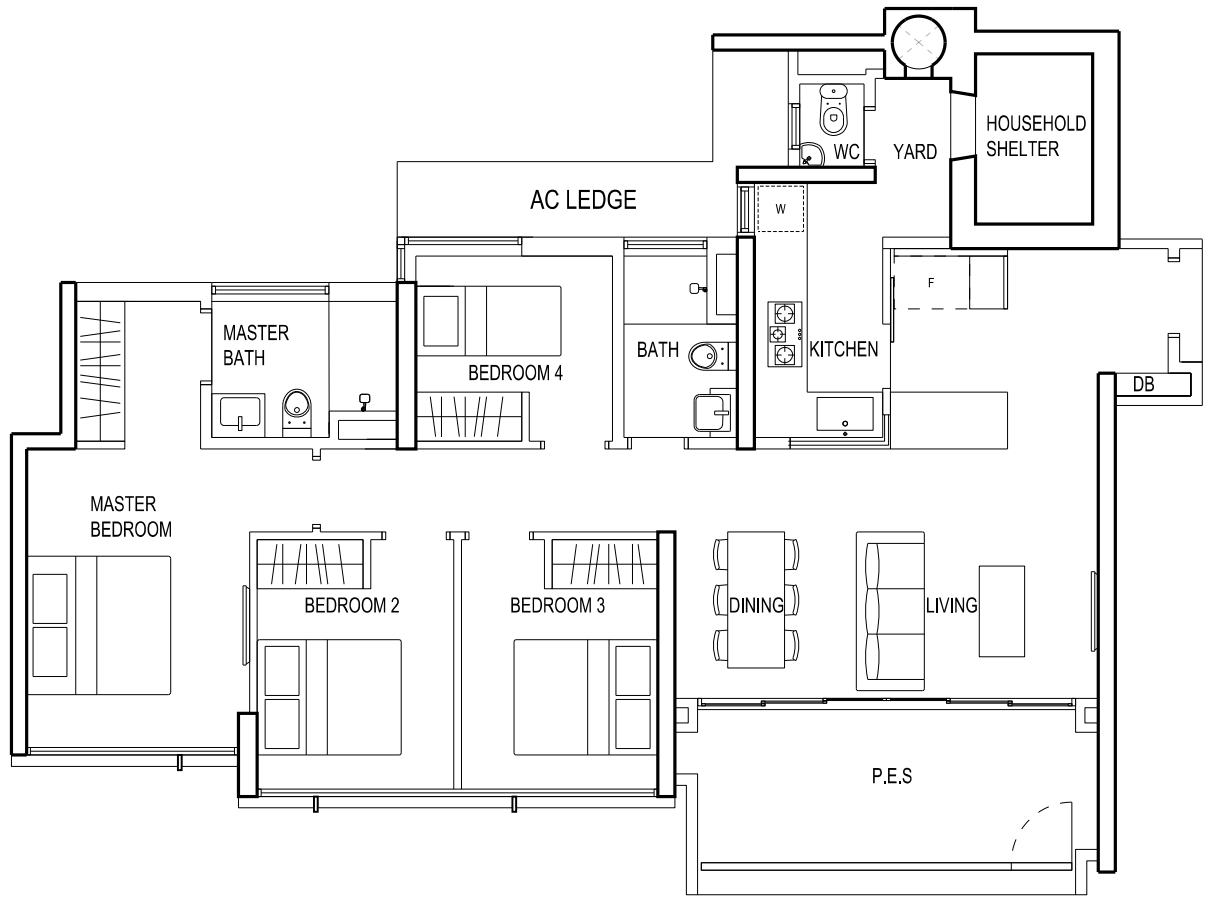


*THE ABOVE PLANS ARE SUBJECT TO CHANGE AS MAY BE REQUIRED BY THE RELEVANT AUTHORITY.
 **RC LEDGE ALTERNATES IN EVERY 3 FLOORS

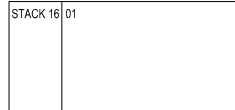


TYPE C2g
 4-BEDROOM
 122 sq m / 1313 sq ft

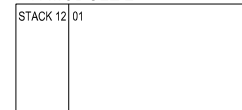
#01-08
 #01-12
 #01-16



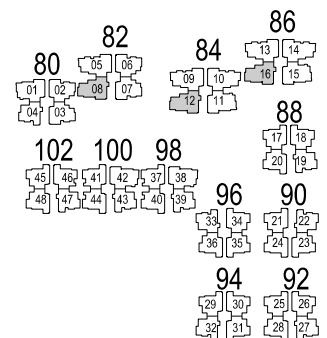
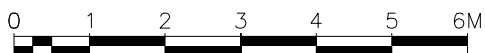
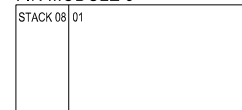
FIN MODULE 1



FIN MODULE 2



FIN MODULE 3

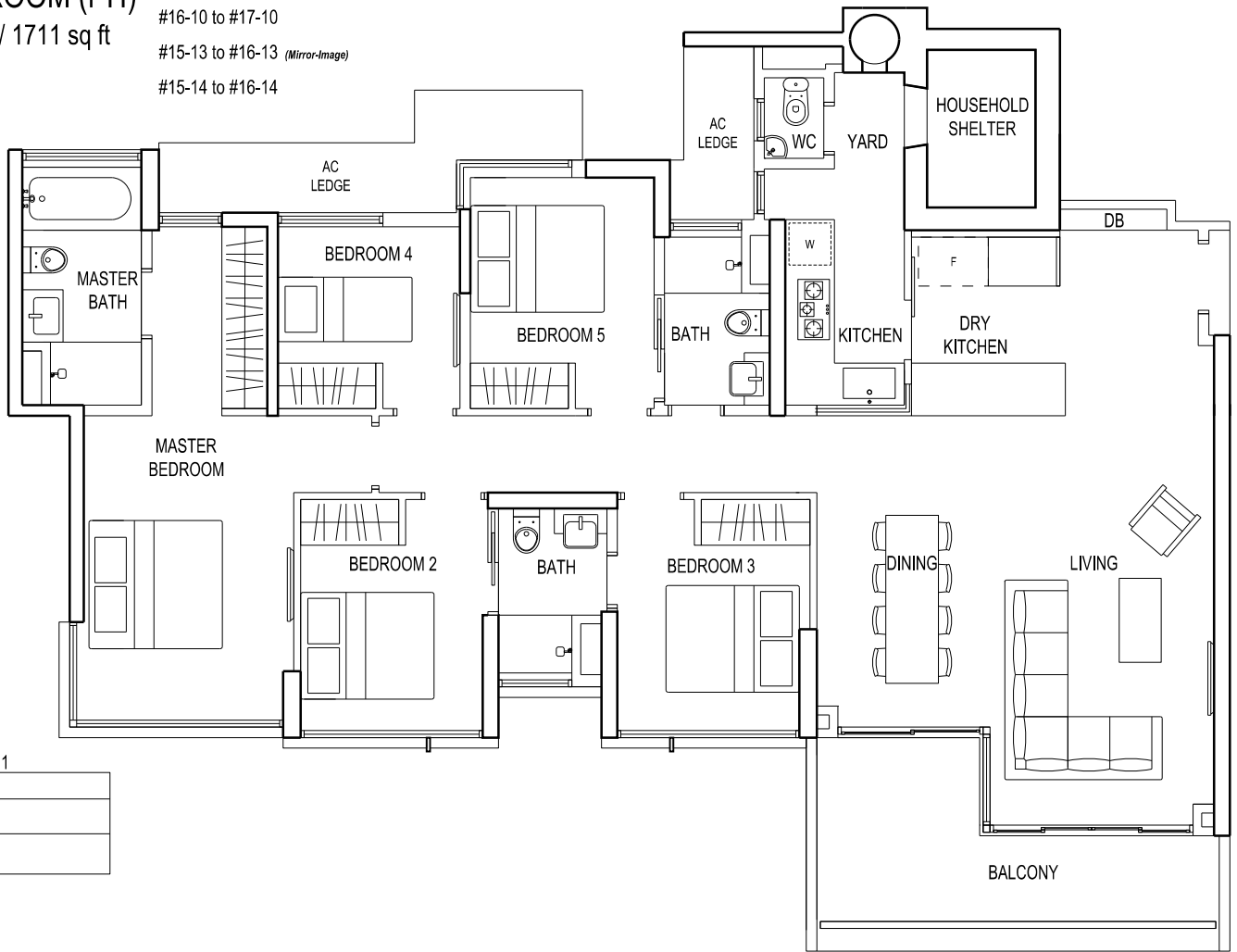


*THE ABOVE PLANS ARE SUBJECT TO CHANGE AS MAY BE REQUIRED BY THE RELEVANT AUTHORITY.
 **RC LEDGE ALTERNATES IN EVERY 3 FLOORS



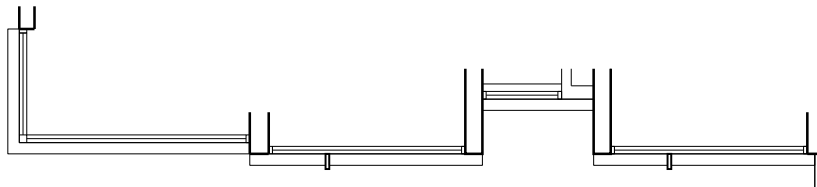
TYPE E
5-BEDROOM (PH)
 159 sq m / 1711 sq ft

- #14-05 to #15-05 (Mirror-Image)
- #16-09 to #17-09 (Mirror-Image)
- #16-10 to #17-10
- #15-13 to #16-13 (Mirror-Image)
- #15-14 to #16-14



FIN MODULE 1

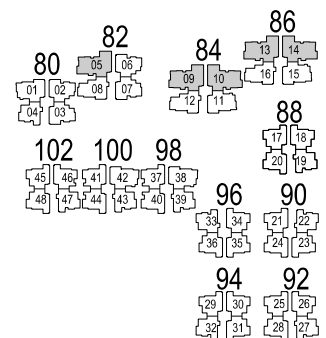
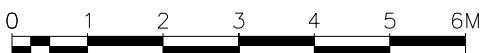
STACK 05	15
STACK 09, 17	10
STACK 13, 16	14



FIN MODULE 2

STACK 05	14
STACK 09, 16	10
STACK 13, 15	14

NOTE:
 #14-05, #16-09, #16-10, #15-13, #15-14 - 3.30M FLOOR-TO-FLOOR HEIGHT
 #15-05, #17-09, #17-10, #16-13, #16-14 - 3.60M FLOOR-TO-FLOOR HEIGHT (BELOW ROOF TOP)



*THE ABOVE PLANS ARE SUBJECT TO CHANGE AS MAY BE REQUIRED BY THE RELEVANT AUTHORITY.
 **RC LEDGE ALTERNATES IN EVERY 3 FLOORS

