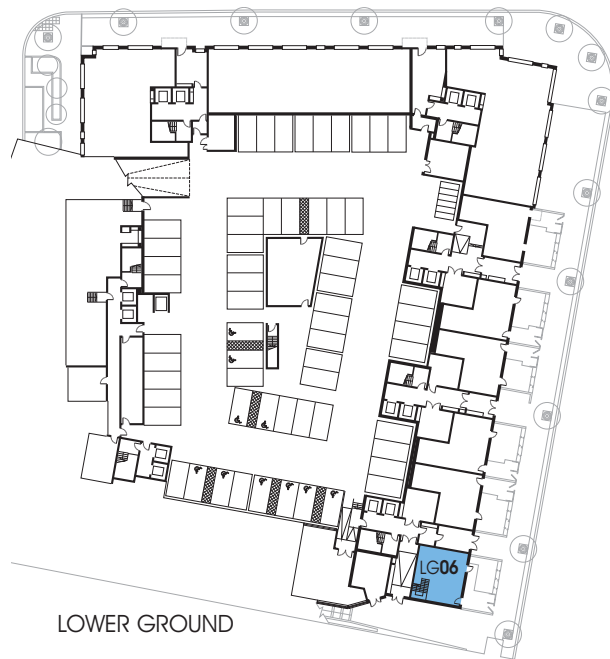
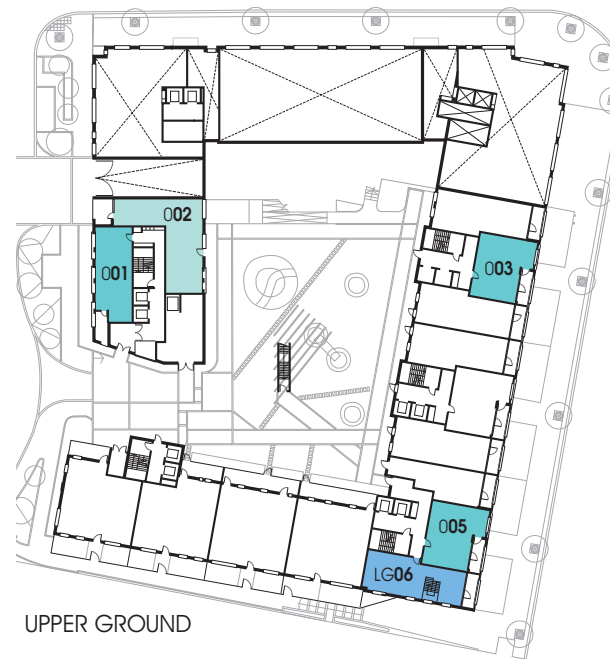


Canary Point offers a stunning choice of highly refined living space, with each apartment enjoying a private balcony or terrace.



LOWER GROUND



UPPER GROUND



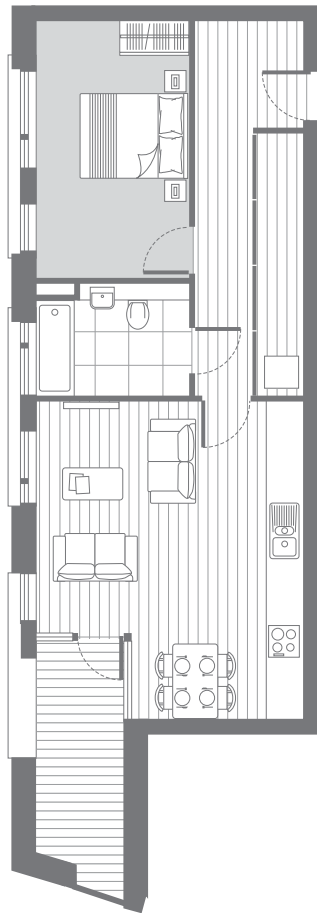
002 2 bed apartment

Internal area: 81.9 sq.m. 881 sq.ft.
 External area: 8.16 sq.m. 88 sq.ft.

Apartment layouts are intended to be correct, precise details may vary during architectural finalisation. Total areas are correct to within 5%.

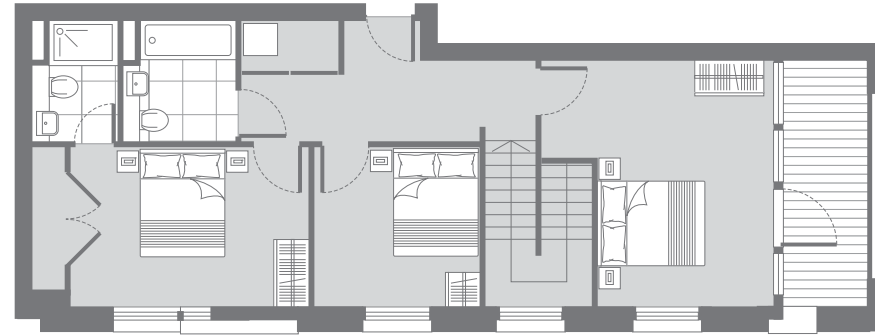


canary point apartments

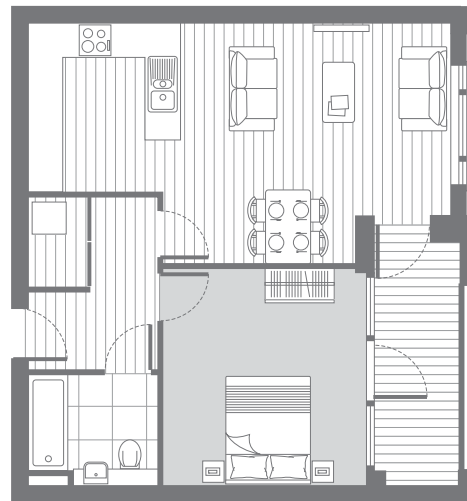


001 1 bed apartment

Internal area: 56.5 sq.m. 608 sq.ft.
 External area: 6.5 sq.m. 70 sq.ft.

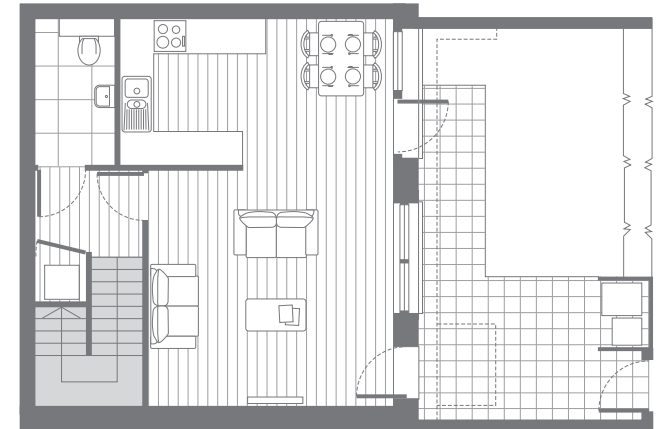


UPPER



003 005 1 bed apartments

Internal area: 55.1 sq.m. 593 sq.ft.
 External area: 6.0 sq.m. 64 sq.ft.



LOWER

LG06 3 bed duplex apartment

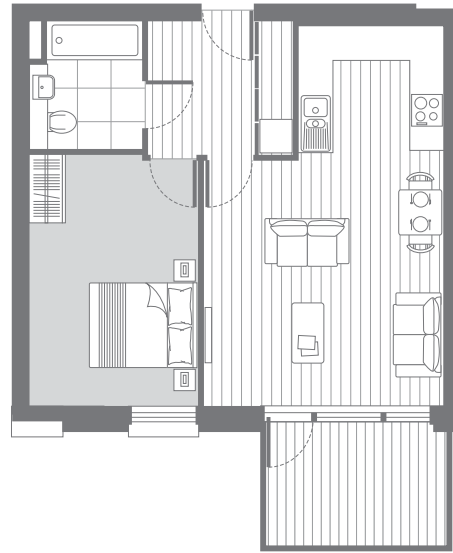
Internal area: 107.0 sq.m. 1152 sq.ft.
 External area: 35.5 sq.m. 383 sq.ft.

There are 4 exclusive 1 & 2 bedroom apartments at upper ground level together with a luxurious 3 bedroom duplex apartment.



115 121 216 222

Internal area: 50.5 sq.m. 543 sq.ft.
External area: 6.0 sq.m. 64 sq.ft.



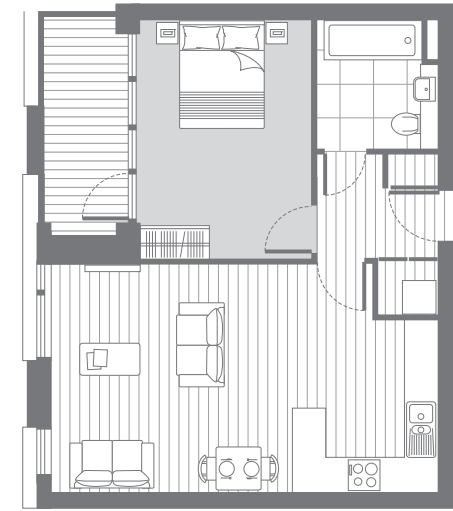
127

Internal area: 50.8 sq.m. 546 sq.ft.
External area: 6.7 sq.m. 73 sq.ft.



112 213 313

Internal area: 51.1sq.m. 550 sq.ft.
External area: 5.8 sq.m. 62 sq.ft.



105 206 306 406

Internal area: 51.0 sq.m. 549 sq.ft.
External area: 5.8 sq.m. 62 sq.ft.

228

Internal area: 50.7 sq.m. 545 sq.ft.
External area: 7.0 sq.m. 75 sq.ft.

Apartment layouts are intended to be correct, precise details may vary during architectural finalisation. Total areas are correct to within 5%.

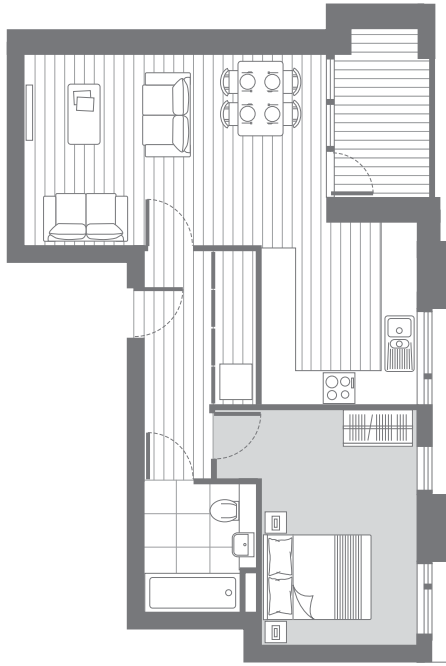


1ST

MWE

canary point

1 BED APARTMENTS



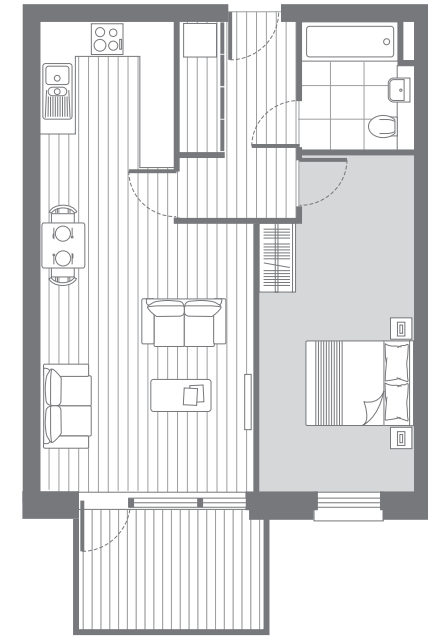
103 203 303 403 503 603 703

Internal area: 52.4 sq.m. 564 sq.ft.
 External area: 4.8 sq.m. 51 sq.ft.



123 224

Internal area: 54.0 sq.m. 581 sq.ft.
 External area: 9.0 sq.m. 97 sq.ft.

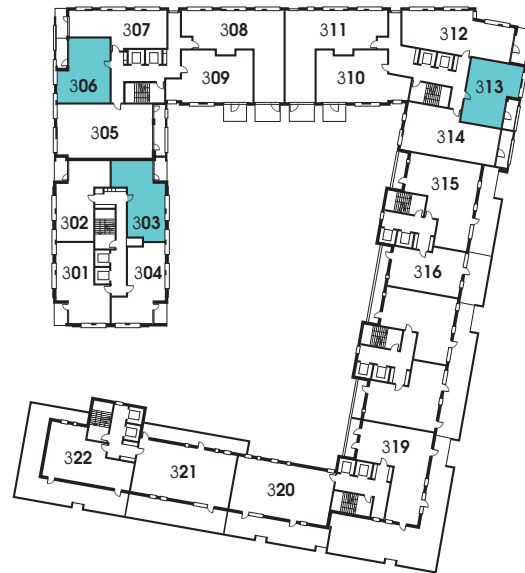


124 225

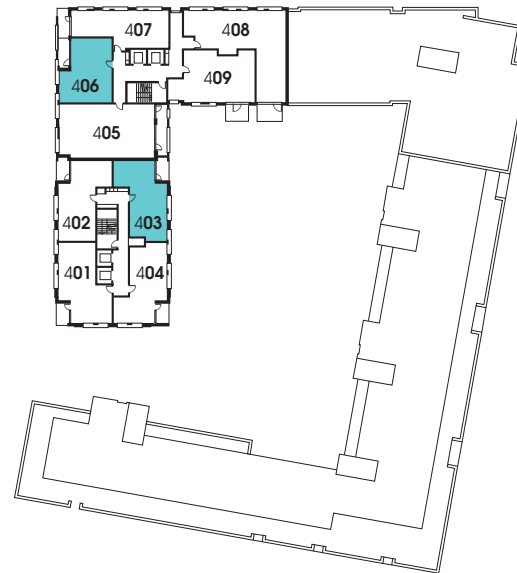
Internal area: 56.0 sq.m. 603 sq.ft.
 External area: 7.0 sq.m. 75 sq.ft.



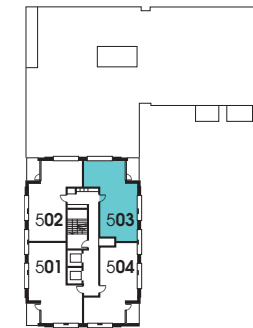
2ND



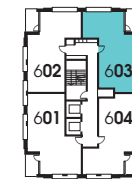
3RD



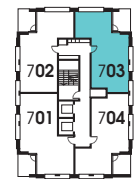
4TH



5TH

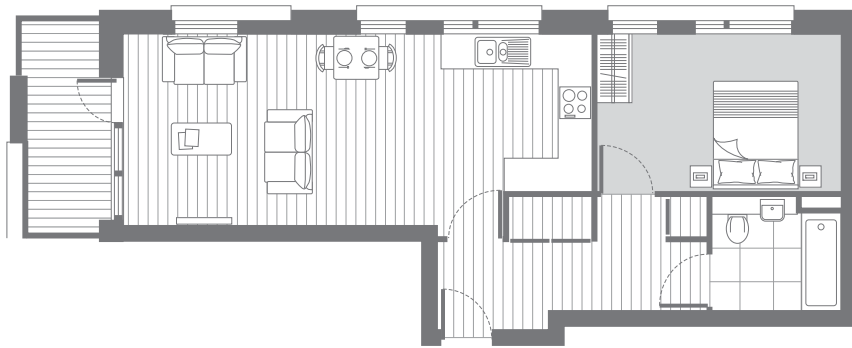


6TH



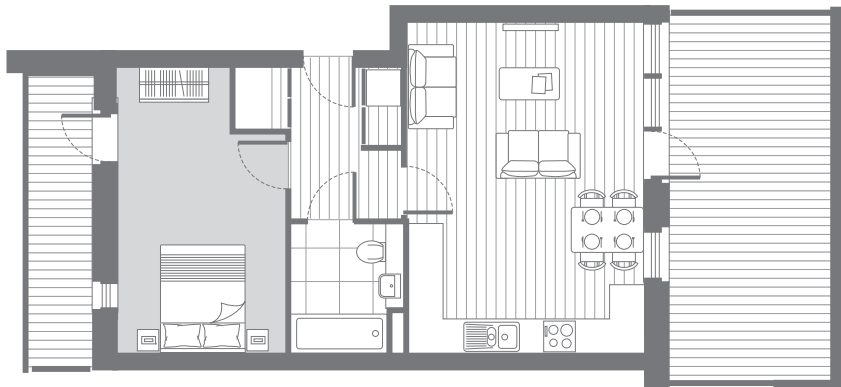
7TH

1 bed apartment plans
 continued overleaf



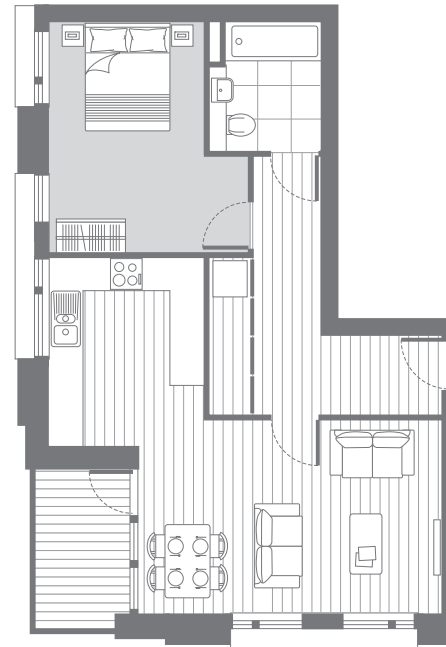
106 207 307 407

Internal area: 55.0 sq.m. 592 sq.ft.
 External area: 5.0 sq.m. 53 sq.ft.



316

Internal area: 51.3 sq.m. 552 sq.ft.
 External area: 24.3 sq.m. 262 sq.ft.



201 301

Internal area: 56.9 sq.m. 612 sq.ft.
 External area: 4.7 sq.m. 50 sq.ft.

401 501 601 701

Internal area: 57.0 sq.m. 613 sq.ft.
 External area: 4.7 sq.m. 50 sq.ft.



204 304 404 504 604 704

Internal area: 52.4 sq.m. 564 sq.ft.
 External area: 4.8 sq.m. 51 sq.ft.



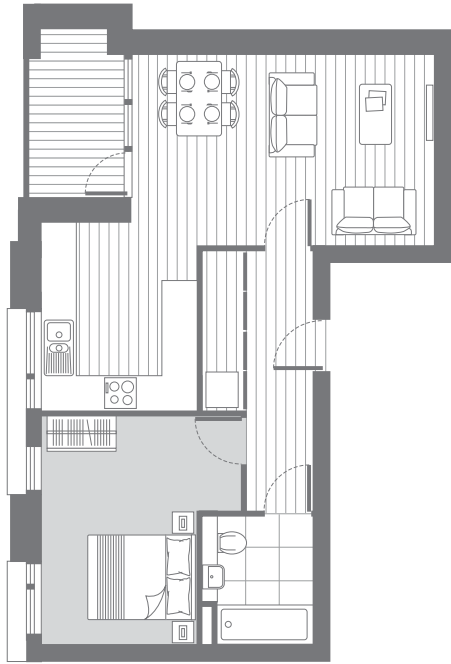
1ST

Apartment layouts are intended to be correct, precise details may vary during architectural finalisation. Total areas are correct to within 5%.

MWE

canary point

1 BED APARTMENTS

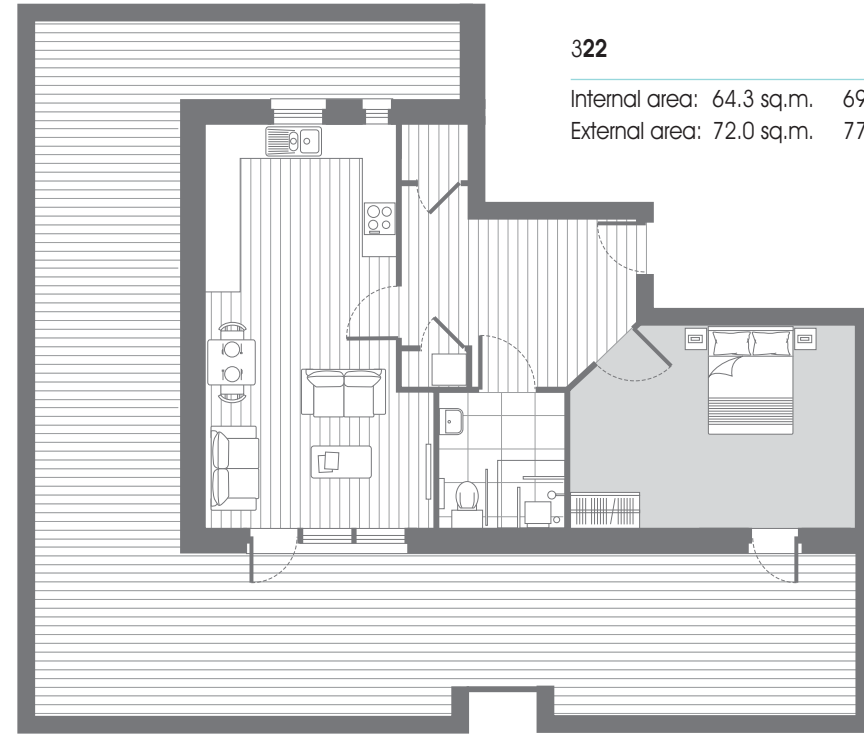


102

Internal area: 53.7 sq.m. 578 sq.ft.
 External area: 4.8 sq.m. 51 sq.ft.

202 302 402 502 602 702

Internal area: 53.6 sq.m. 577 sq.ft.
 External area: 4.8 sq.m. 51 sq.ft.

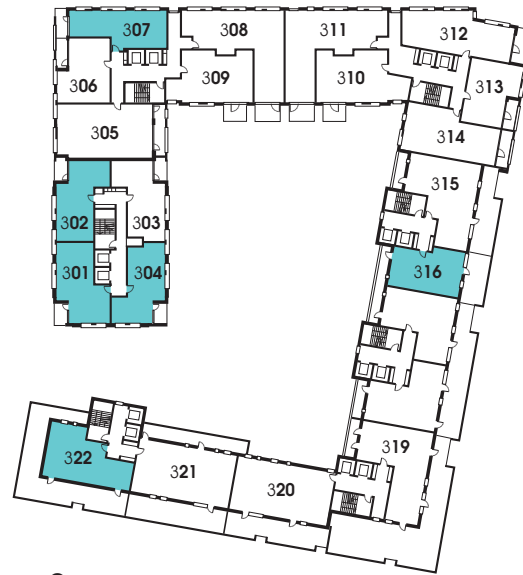


322

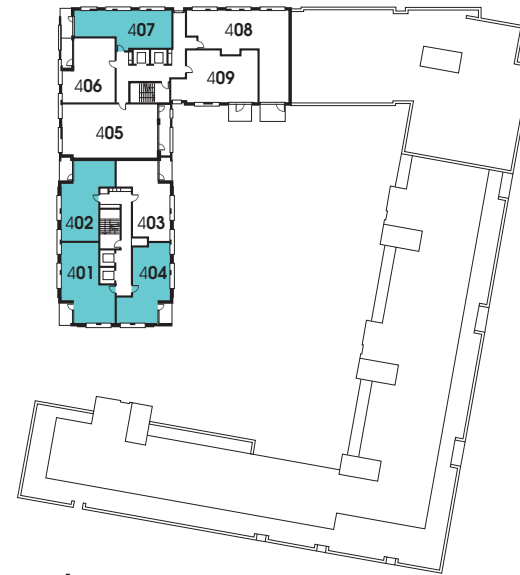
Internal area: 64.3 sq.m. 692 sq.ft.
 External area: 72.0 sq.m. 775 sq.ft.



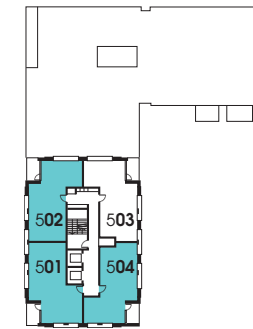
2ND



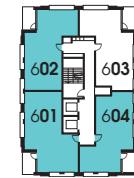
3RD



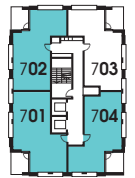
4TH



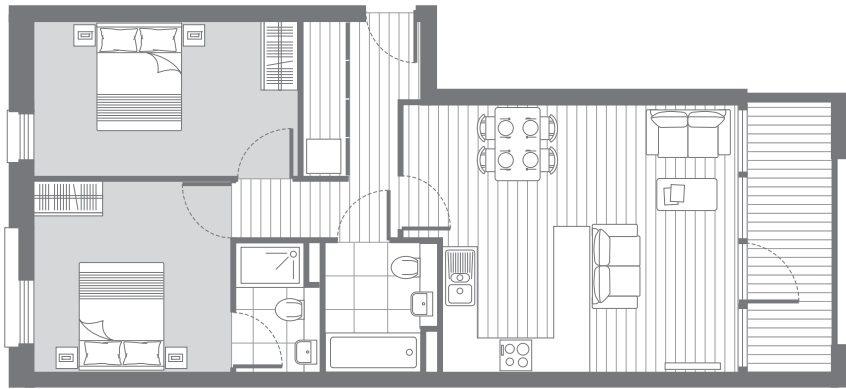
5TH



6TH



7TH



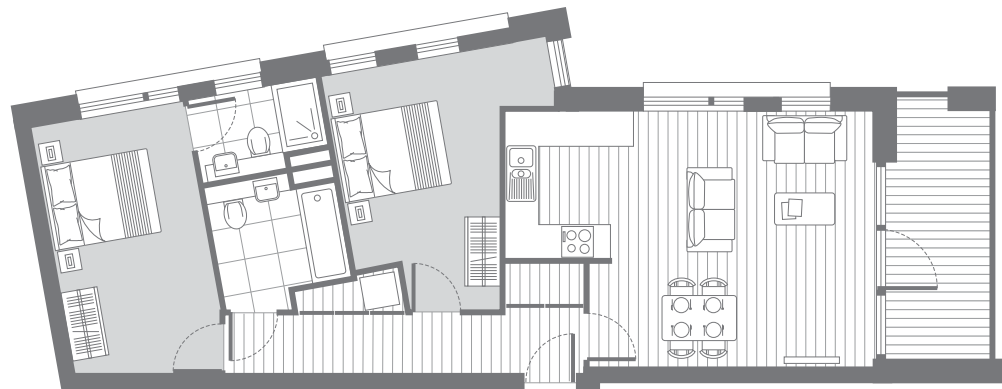
113 214 314

Internal area: 70.1 sq.m. 754 sq.ft.
 External area: 7.0 sq.m. 75 sq.ft.



122 223

Internal area: 65.0 sq.m. 699 sq.ft.
 External area: 7.0 sq.m. 75 sq.ft.



111 212 312

Internal area: 72.7 sq.m. 782 sq.ft.
 External area: 8.2 sq.m. 88 sq.ft.

Apartment layouts are intended to be correct, precise details may vary during architectural finalisation. Total areas are correct to within 5%.



1ST



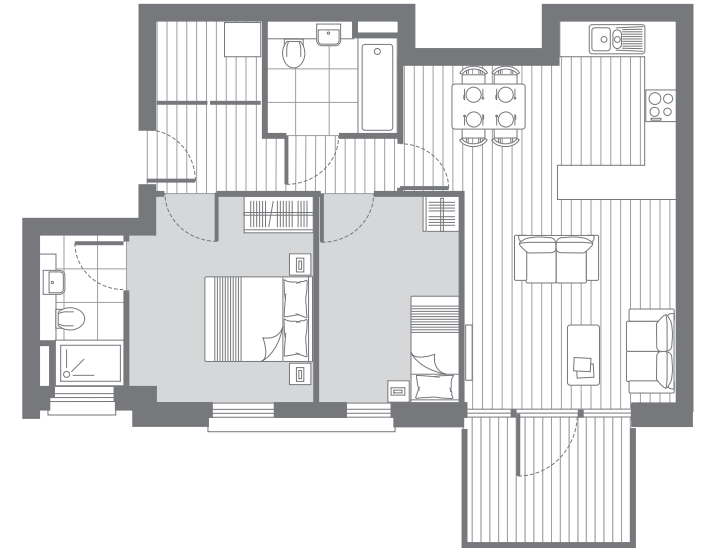
108 109

Internal area: 61.2 sq.m. 658 sq.ft.
 External area: 6.3 sq.m. 67 sq.ft.



210 310

Internal area: 70.2 sq.m. 755 sq.ft.
 External area: 6.39 sq.m. 69 sq.ft.

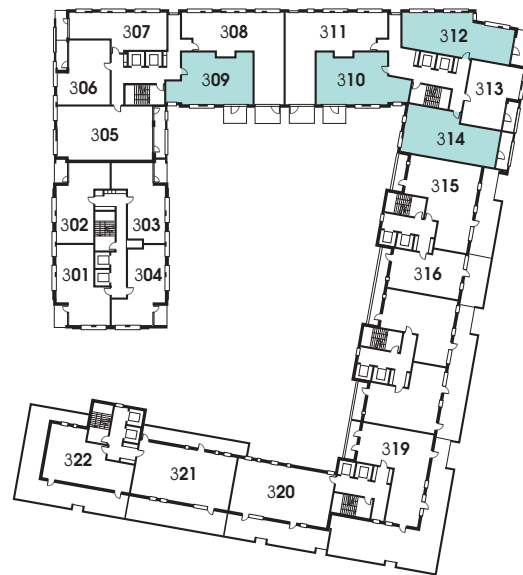


209 309 409

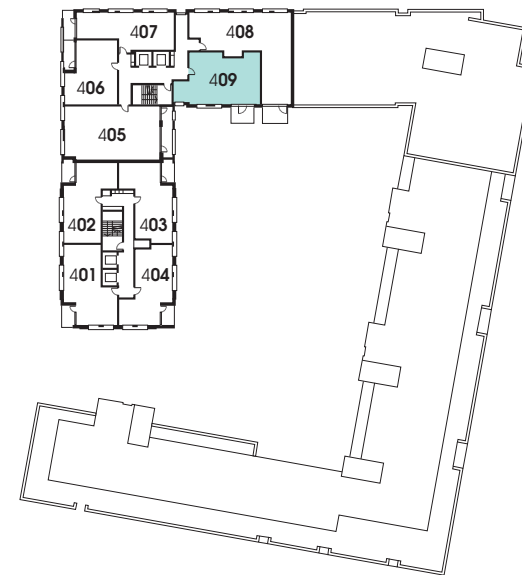
Internal area: 66.8 sq.m. 719 sq.ft.
 External area: 6.39 sq.m. 69 sq.ft.



2ND

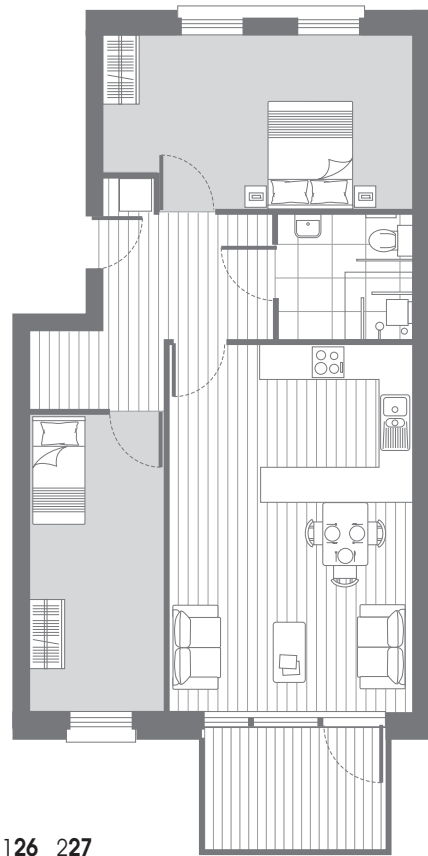


3RD



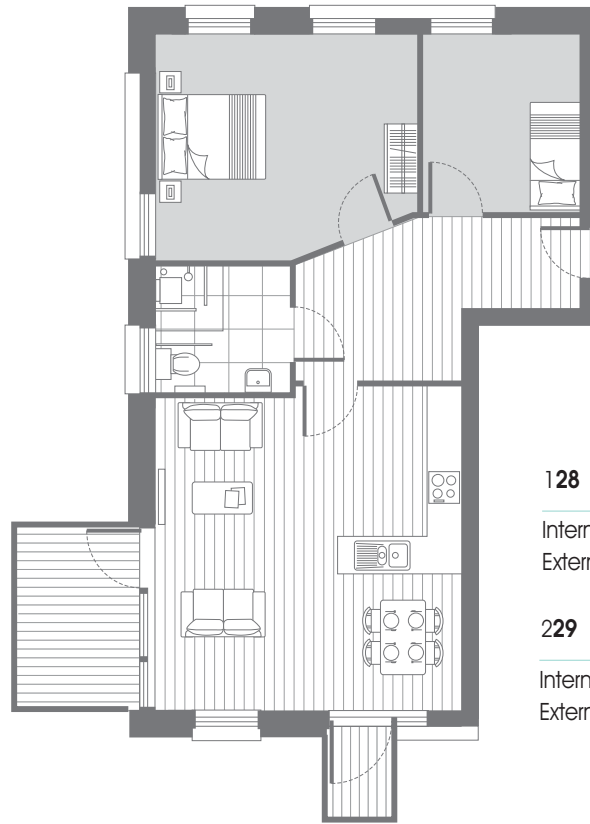
4TH

2 bed apartment plans
 continued overleaf



126 227

Internal area: 75.8 sq.m. 816 sq.ft.
External area: 7.0 sq.m. 75 sq.ft.



128

Internal area: 76.8 sq.m. 826 sq.ft.
External area: 8.5 sq.m. 91 sq.ft.

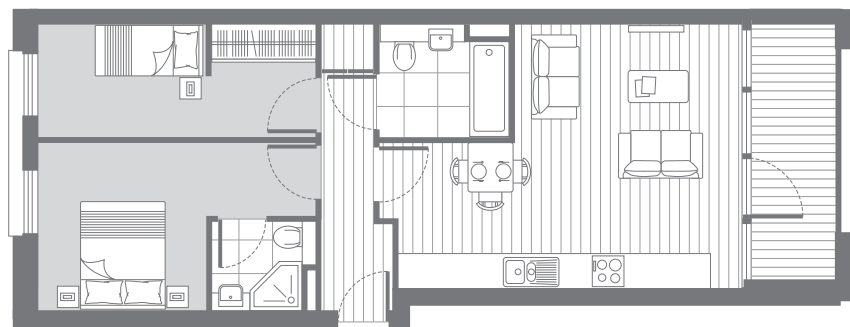
229

Internal area: 76.8 sq.m. 826 sq.ft.
External area: 7.0 sq.m. 75 sq.ft.



315

Internal area: 80.4 sq.m. 865 sq.ft.
External area: 34.0 sq.m. 336 sq.ft.



114

Internal area: 61.8 sq.m. 665 sq.ft.
External area: 6.75 sq.m. 73 sq.ft.

116 120 215 217 221

Internal area: 61.7 sq.m. 664 sq.ft.
External area: 6.75 sq.m. 73 sq.ft.



1ST

Apartment layouts are intended to be correct, precise details may vary during architectural finalisation. Total areas are correct to within 5%.

mwe

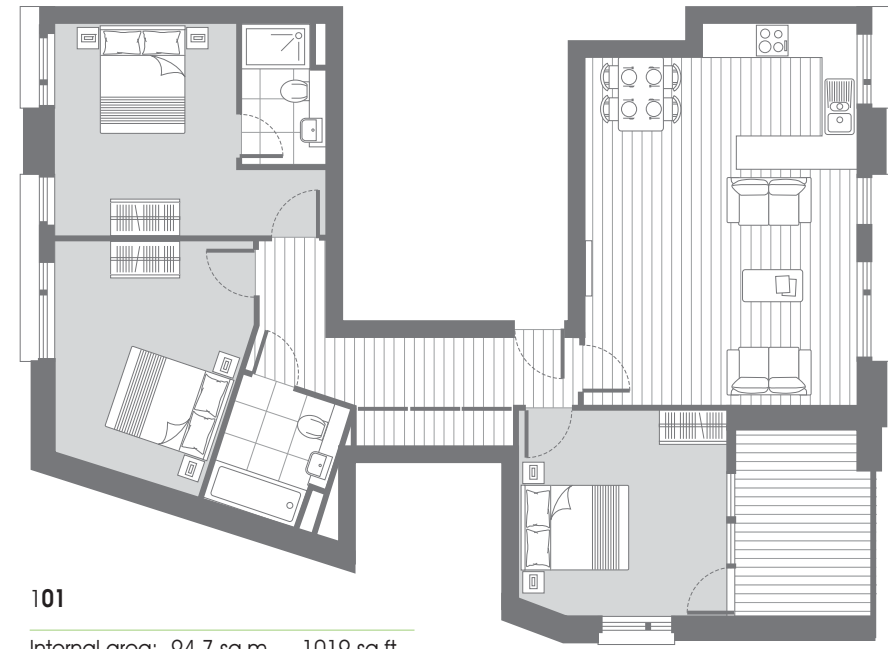
canary point

2-3 BED APARTMENTS



104 205 305 405

Internal area: 87.2 sq.m. 938 sq.ft.
 External area: 9.6 sq.m. 103 sq.ft.

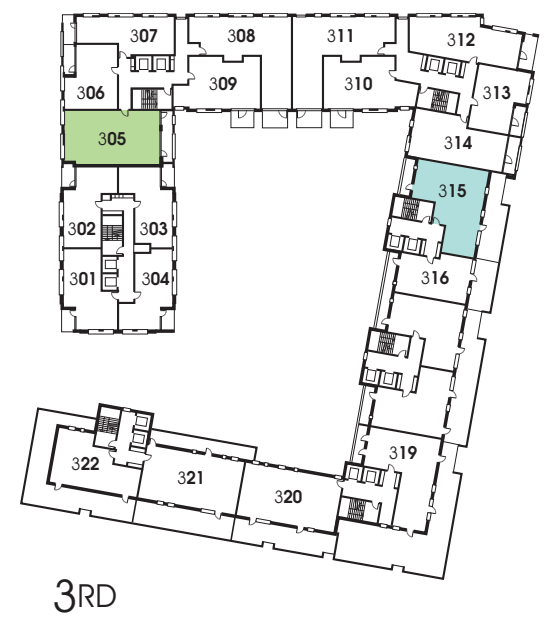


101

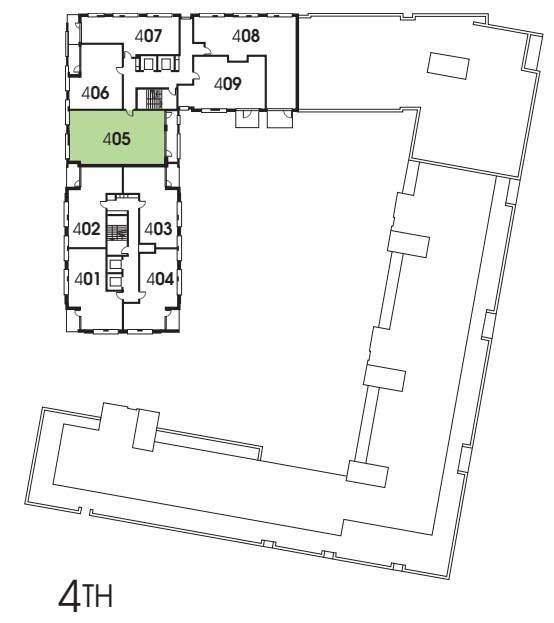
Internal area: 94.7 sq.m. 1019 sq.ft.
 External area: 7.0 sq.m. 75 sq.ft.



2ND

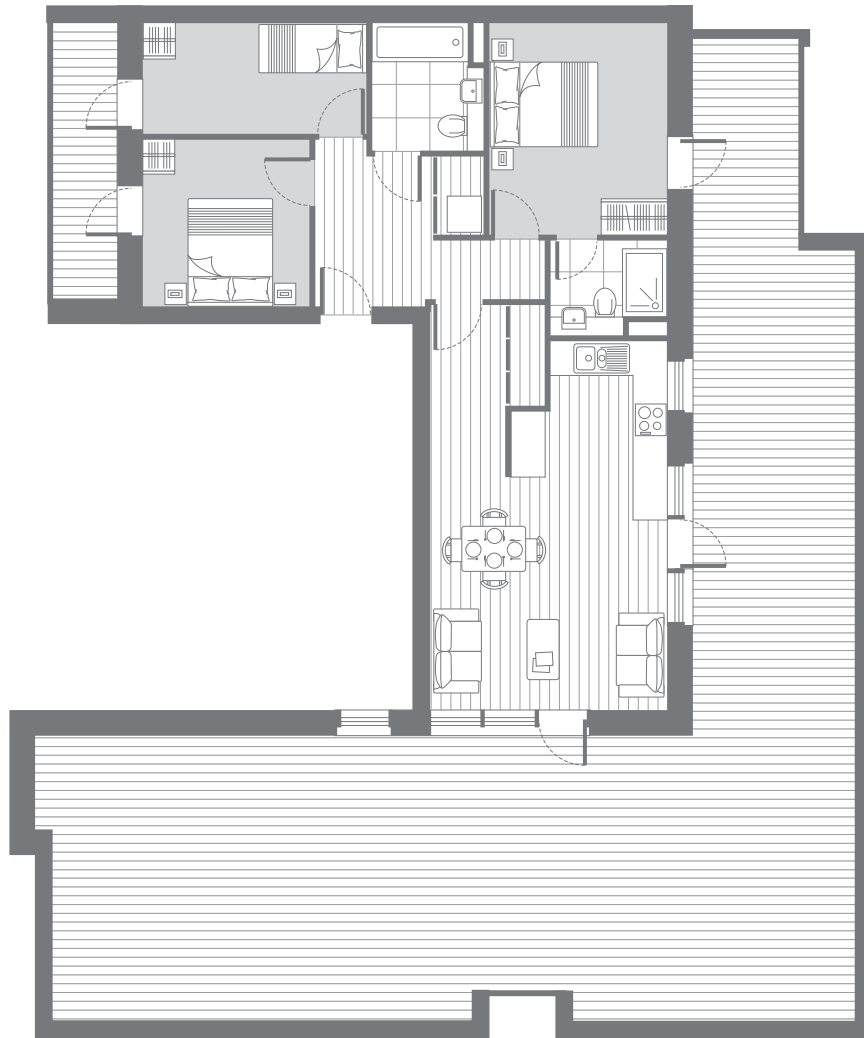


3RD



4TH

3 bed apartment plans
 continued overleaf



319

Internal area: 78.5 sq.m. 845 sq.ft.
 External area: 110.0 sq.m. 1184 sq.ft.



321

Internal area: 90.6 sq.m. 975 sq.ft.
 External area: 58.0 sq.m. 624 sq.ft.

Apartment layouts are intended to be correct, precise details may vary during architectural finalisation. Total areas are correct to within 5%.

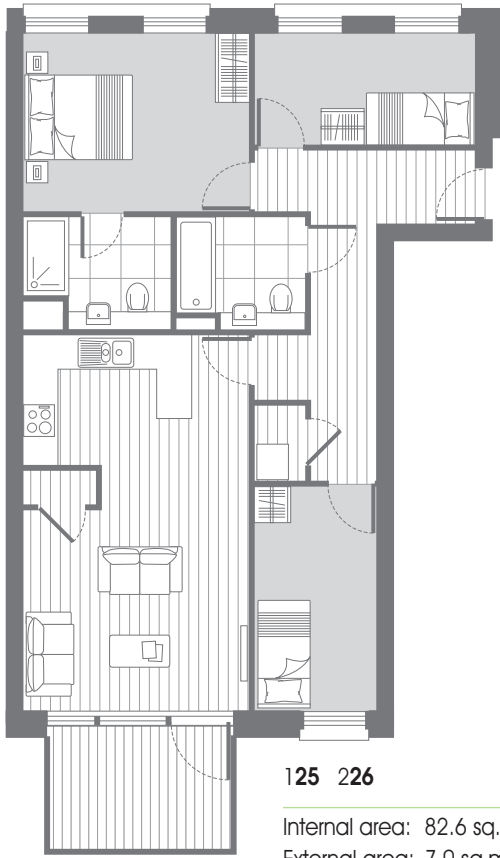


1 ST

mwe

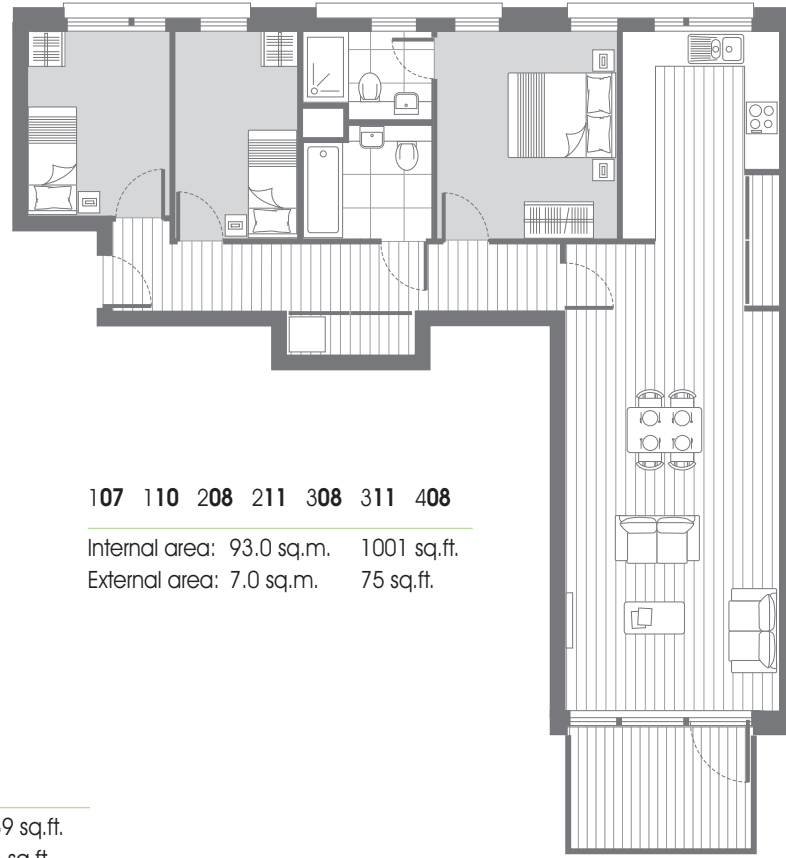
canary point

3 BED APARTMENTS



125 226

Internal area: 82.6 sq.m. 889 sq.ft.
External area: 7.0 sq.m. 75 sq.ft.



107 110 208 211 308 311 408

Internal area: 93.0 sq.m. 1001 sq.ft.
External area: 7.0 sq.m. 75 sq.ft.

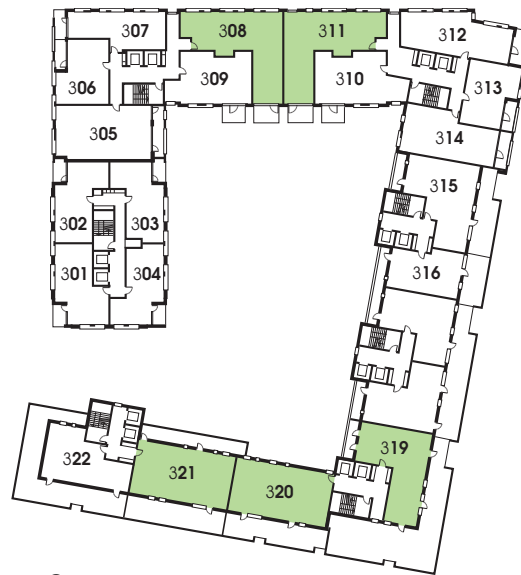


320

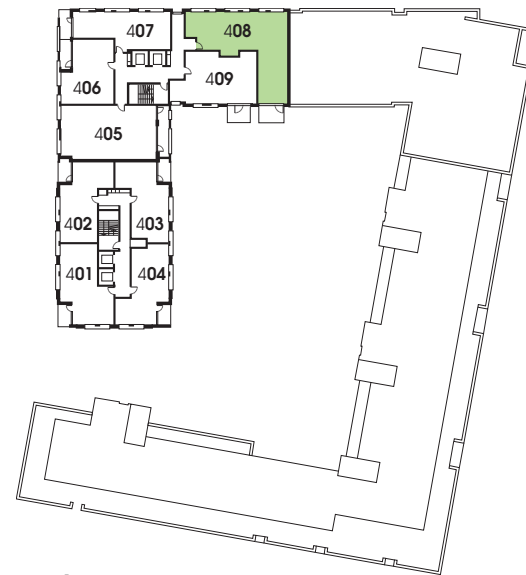
Internal area: 90.6 sq.m. 975 sq.ft.
External area: 37.0 sq.m. 398 sq.ft.



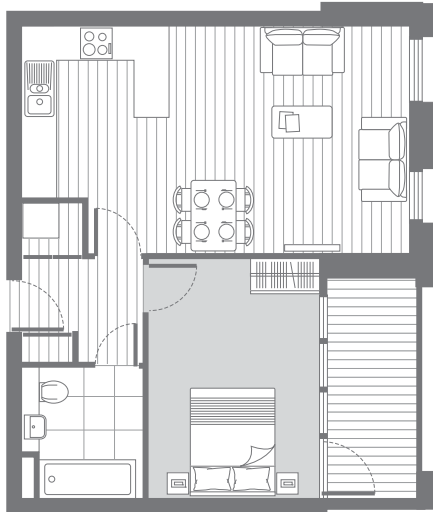
2ND



3RD



4TH



162

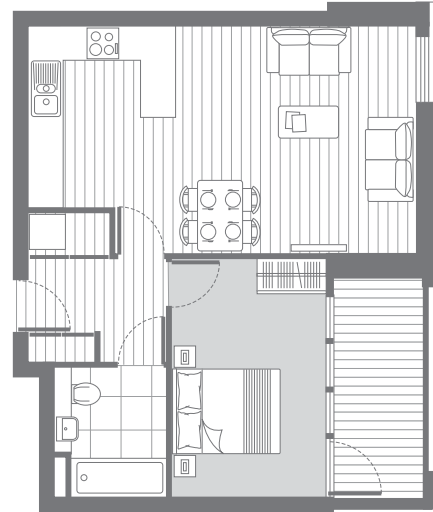
Internal area: 50.0 sq.m. 538 sq.ft.
External area: 6.0 sq.m. 64 sq.ft.

163 261 263 361 461 463

Internal area: 51.0 sq.m. 549 sq.ft.
External area: 6.0 sq.m. 64 sq.ft.

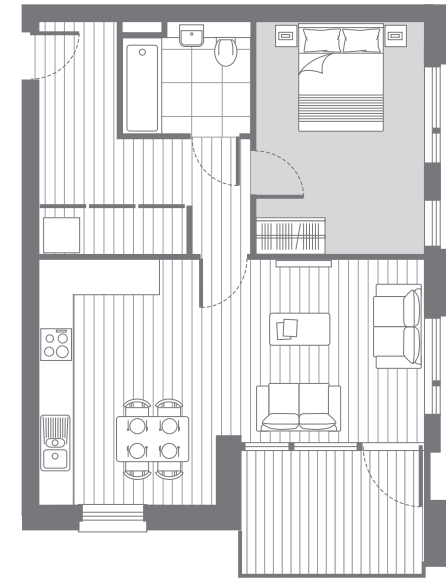
363

Internal area: 51.0 sq.m. 549 sq.ft.
External area: 5.38 sq.m. 58 sq.ft.



157 158 257 258 357 358 457 458

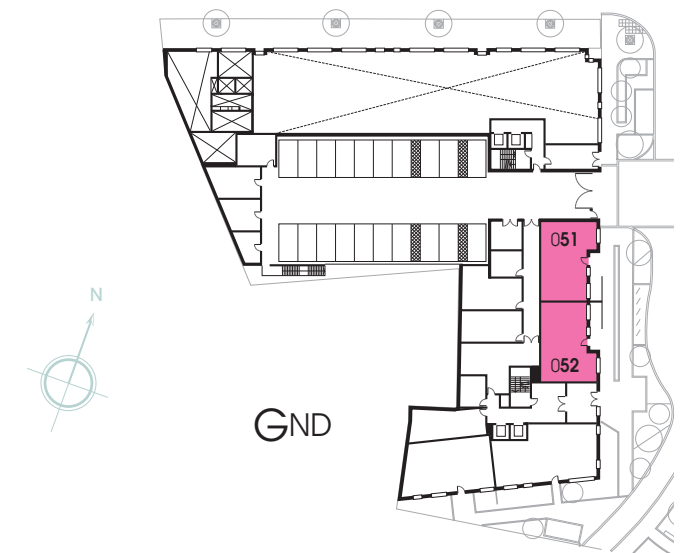
Internal area: 50.0 sq.m. 538 sq.ft.
External area: 6.0 sq.m. 64 sq.ft.



164 264 364 464

Internal area: 54.9 sq.m. 591 sq.ft.
External area: 7.0 sq.m. 75 sq.ft.

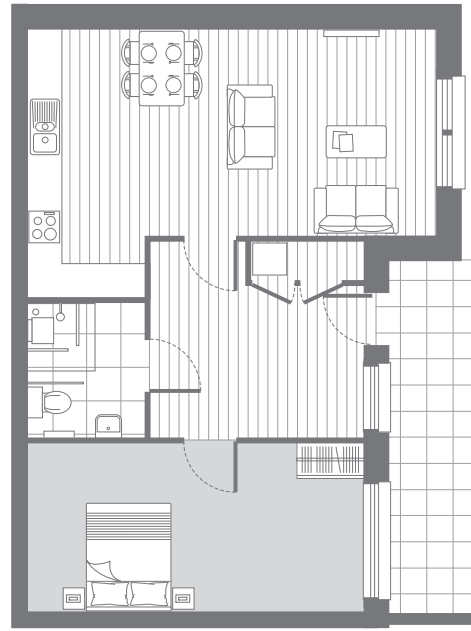
Apartment layouts are intended to be correct, precise details may vary during architectural finalisation. Total areas are correct to within 5%.





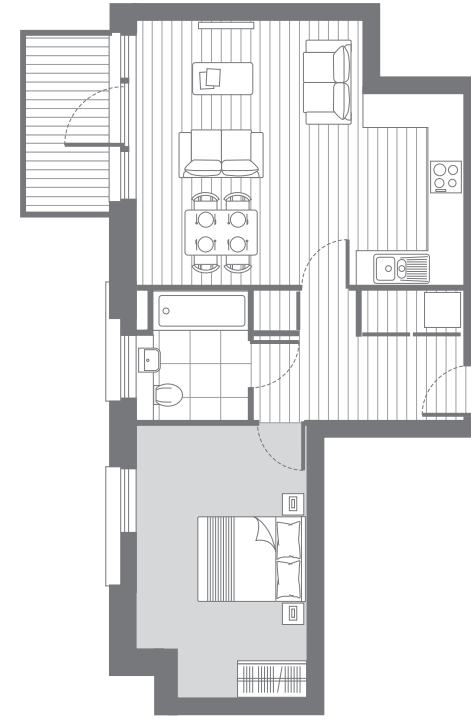
165 265 365 465

Internal area: 50.1sq.m. 539 sq.ft.
External area: 7.0 sq.m. 75 sq.ft.



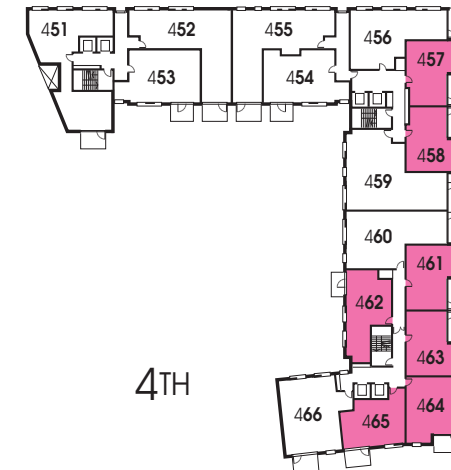
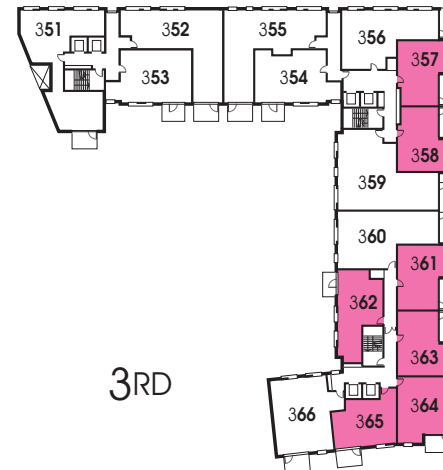
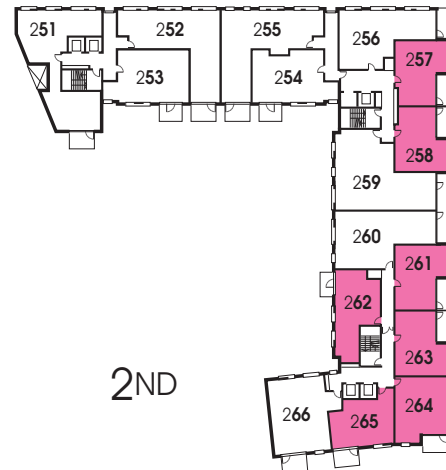
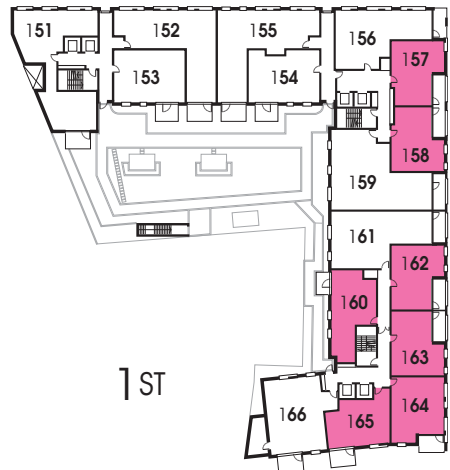
051 052 (Reversed layout)

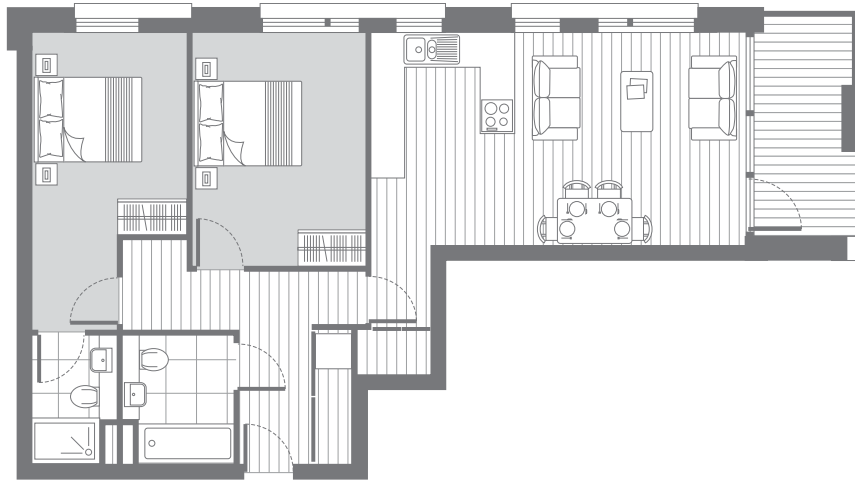
Internal area: 67.1 sq.m. 722 sq.ft.
External area: 8.0 sq.m. 86 sq.ft.



160 262 362 462

Internal area: 53.9 sq.m. 580 sq.ft.
External area: 6.0 sq.m. 64 sq.ft.
160 External area: 5.0 sq.m. 53 sq.ft.





156 256 356 456

Internal area: 73.8 sq.m. 794 sq.ft.
 External area: 6.59 sq.m. 71 sq.ft.



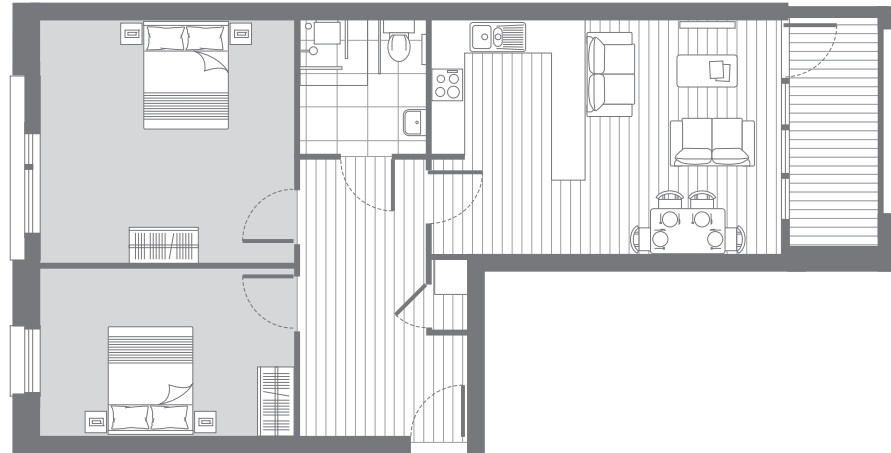
153

Internal area: 63.5 sq.m. 683 sq.ft.
 External area: 6.38 sq.m. 69 sq.ft.



154

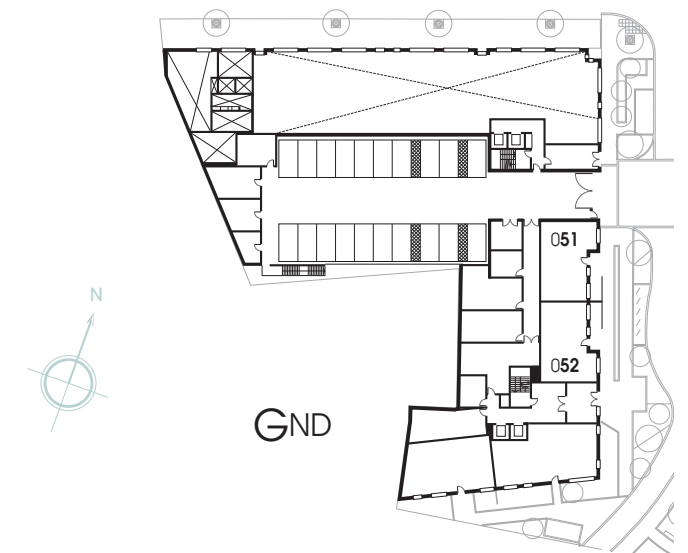
Internal area: 61.1 sq.m. 657 sq.ft.
 External area: 6.38 sq.m. 69 sq.ft.



161 260 360 460

Internal area: 80.5 sq.m. 866 sq.ft.
 External area: 5.0 sq.m. 53 sq.ft.
 161 External area: 6.0 sq.m. 64 sq.ft.

Apartment layouts are intended to be correct, precise details may vary during architectural finalisation. Total areas are correct to within 5%.





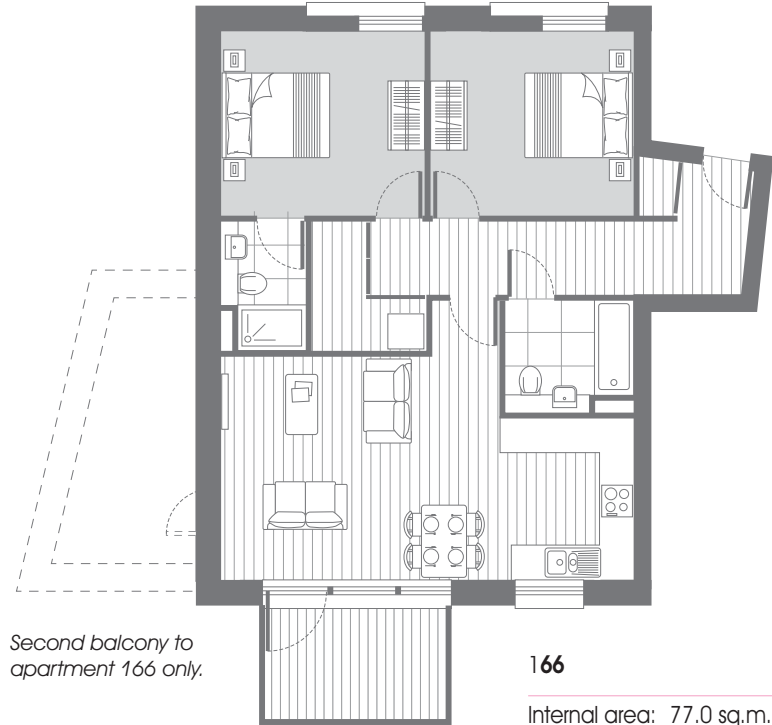
253 353 453

Internal area: 63.5 sq.m. 683 sq.ft.
 External area: 6.38 sq.m. 69 sq.ft.



254 354 454

Internal area: 65.6 sq.m. 706 sq.ft.
 External area: 6.38 sq.m. 69 sq.ft.

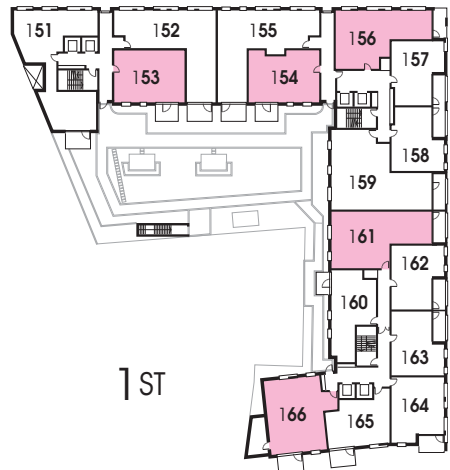


166

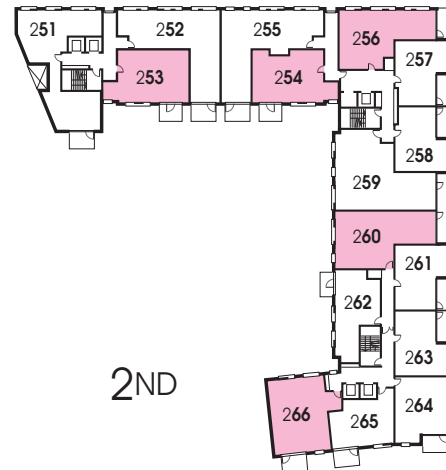
Internal area: 77.0 sq.m. 829 sq.ft.
 External area: 16.0 sq.m. 172 sq.ft.

266 366 466

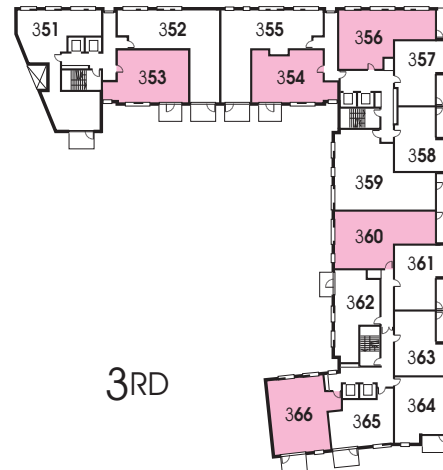
Internal area: 77.1 sq.m. 830 sq.ft.
 External area: 7.0 sq.m. 75 sq.ft.



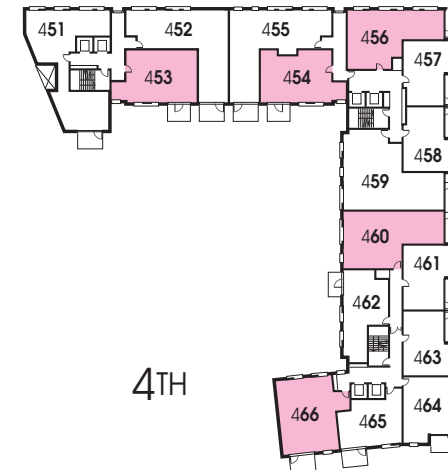
1ST



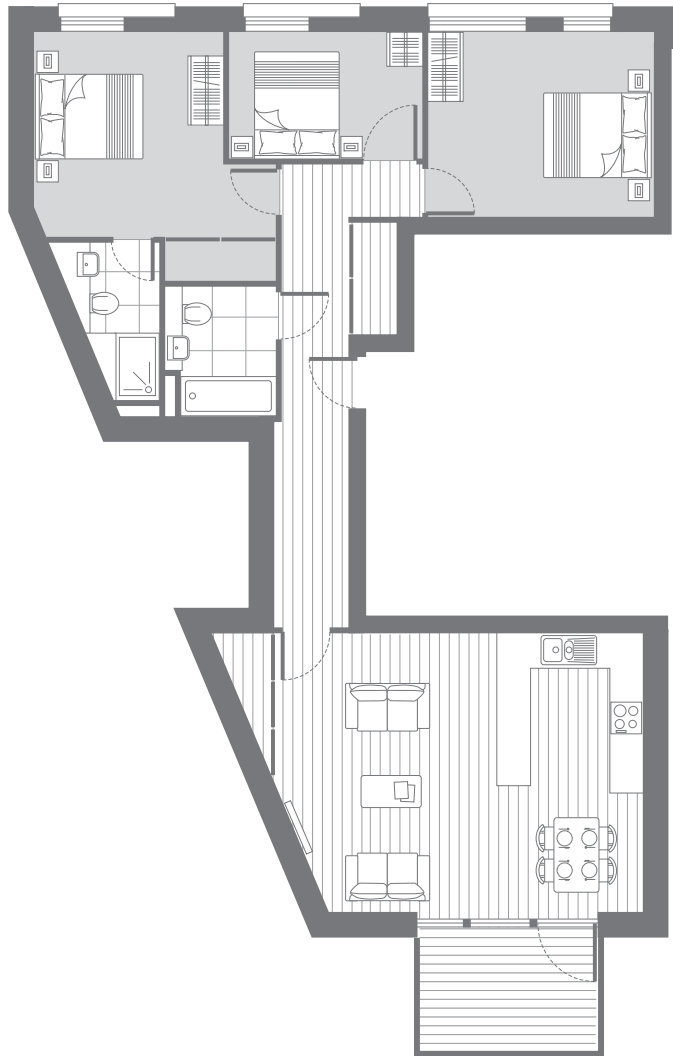
2ND



3RD



4TH



151

Internal area: 93.8 sq.m. 1009 sq.ft.
 External area: 6.46 sq.m. 70 sq.ft.

251 351 451

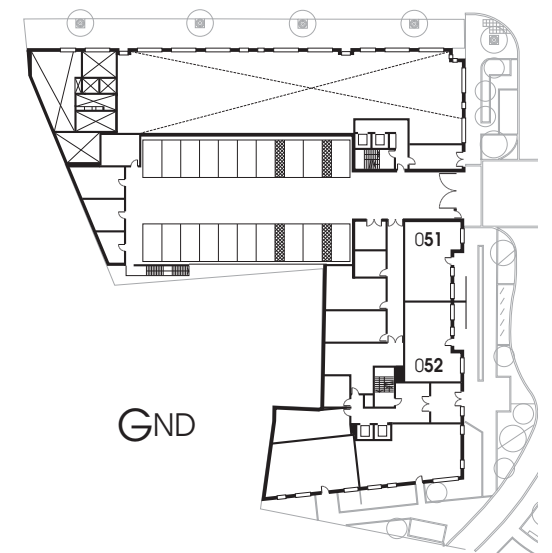
Internal area: 93.7 sq.m. 1008 sq.ft.
 External area: 6.46 sq.m. 70 sq.ft.



159 259 359 459

Internal area: 103.9 sq.m. 1118 sq.ft.
 External area: 7.0 sq.m. 75 sq.ft.

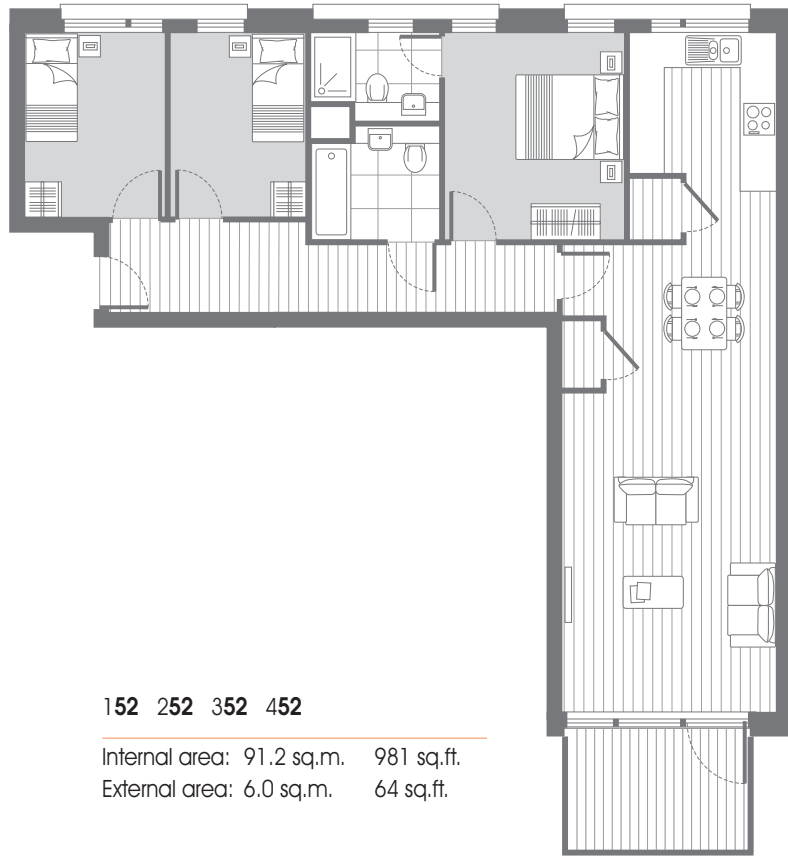
Apartment layouts are intended to be correct, precise details may vary during architectural finalisation. Total areas are correct to within 5%.



mwe

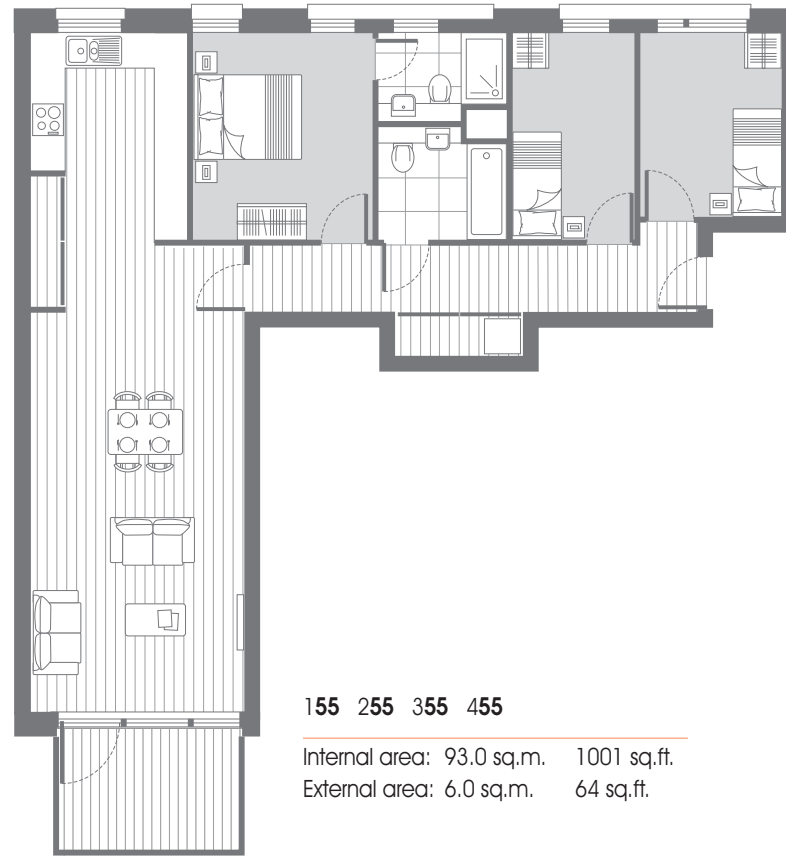
harbourside

3 BED APARTMENTS



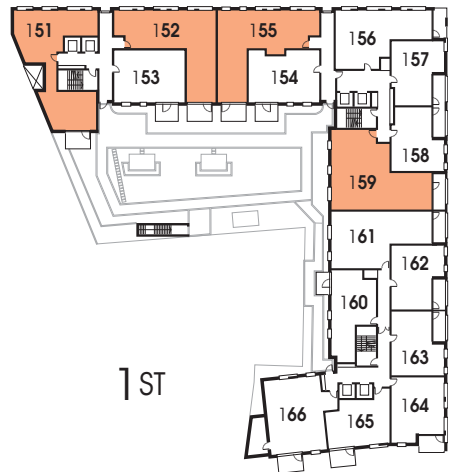
152 252 352 452

Internal area: 91.2 sq.m. 981 sq.ft.
 External area: 6.0 sq.m. 64 sq.ft.

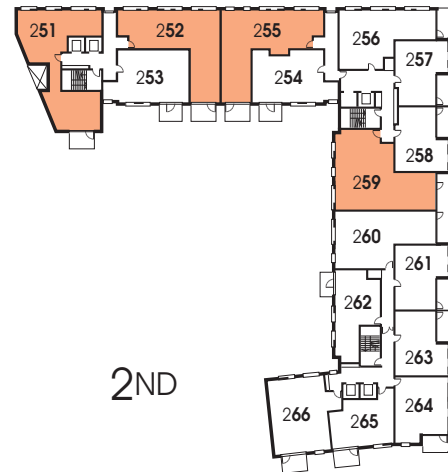


155 255 355 455

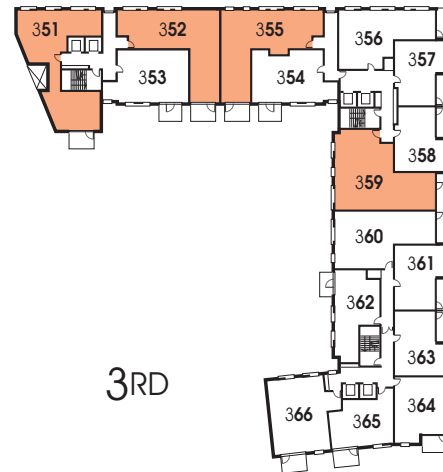
Internal area: 93.0 sq.m. 1001 sq.ft.
 External area: 6.0 sq.m. 64 sq.ft.



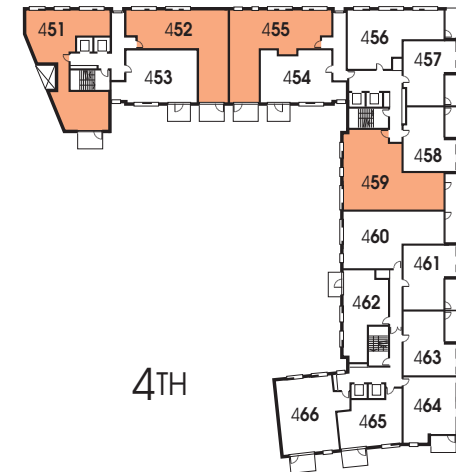
1ST



2ND



3RD



4TH