



**TYPE A1**

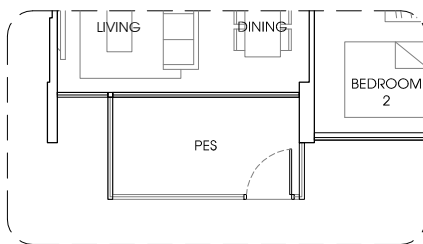
71 sq m / 764 sq ft

#02 - 23 to #14 - 23.

#02 - 31 to #14 - 31.

Mirror Unit.

#02 - 36 to #14 - 36.



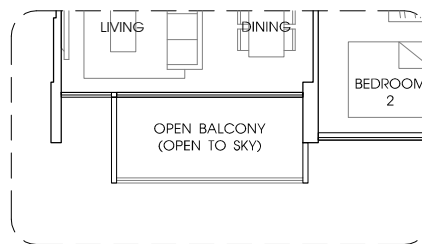
**TYPE A1-P**

72 sq m / 775 sq ft

#01 - 23, #01 - 31.

Mirror Unit.

#01 - 36.



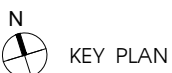
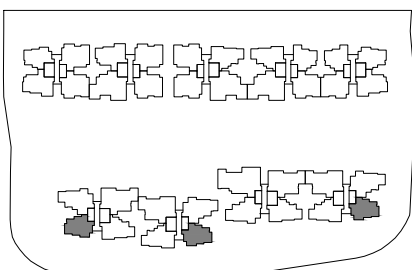
**TYPE A1-T**

71 sq m / 764 sq ft

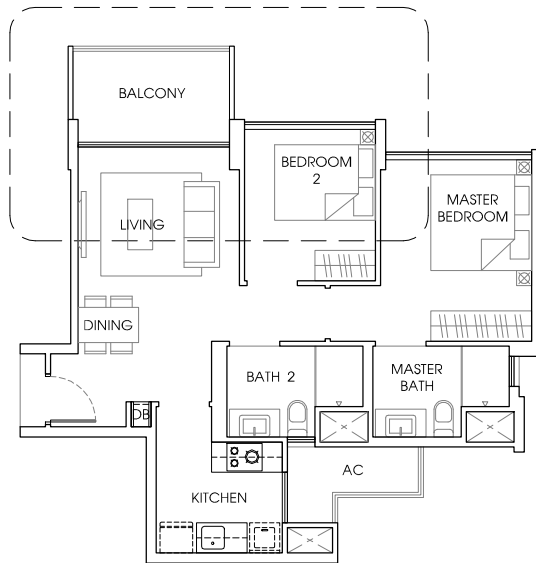
#15 - 23, #15 - 31.

Mirror Unit.

#15 - 36.



Area includes A/C ledge, balcony, PES, roof terrace and void (where applicable). Orientation and facings will differ depending on the unit you are purchasing (please refer to the key plan). All plans are not to scale and subject to changes as may be required by relevant authorities. All floor areas are estimated and subjected to final survey.



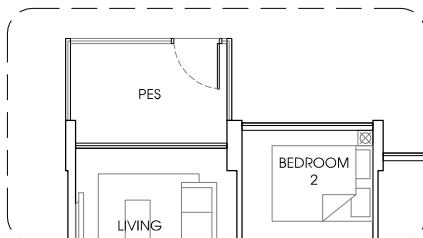
**TYPE A1a**

70 sq m / 753 sq ft

#02 - 14 to #14 - 14.

Mirror Unit.

#02 - 17 to #14 - 17.



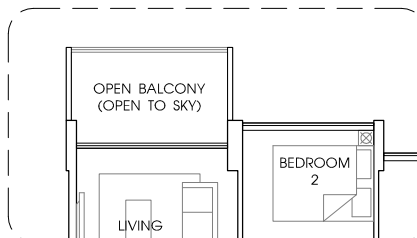
**TYPE A1a-P**

71 sq m / 764 sq ft

#01 - 14.

Mirror Unit.

#01 - 17.



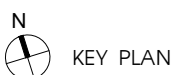
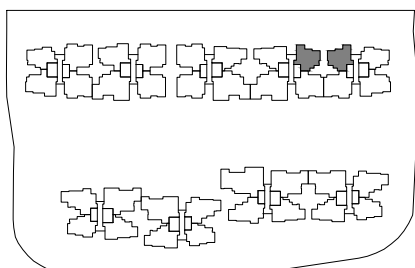
**TYPE A1a-T**

70 sq m / 753 sq ft

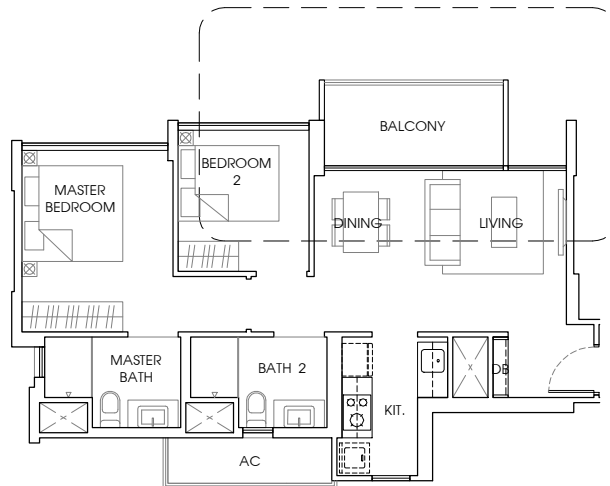
#15 - 14.

Mirror Unit.

#15 - 17.



Area includes A/C ledge, balcony, PES, roof terrace and void (where applicable). Orientation and facings will differ depending on the unit you are purchasing (please refer to the key plan). All plans are not to scale and subject to changes as may be required by relevant authorities. All floor areas are estimated and subjected to final survey.



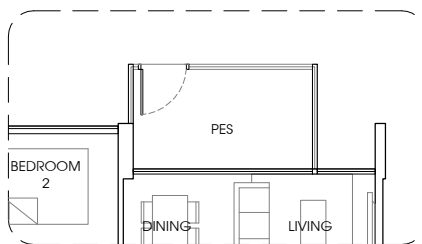
**TYPE A2**

71 sq m / 764 sq ft

#02 - 01 to #14 - 01.

Mirror Unit.

#02 - 18 to #14 - 18.

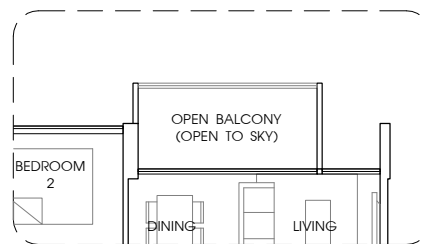


**TYPE A2-P**

72 sq m / 775 sq ft

Mirror Unit.

#01 - 18.



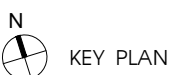
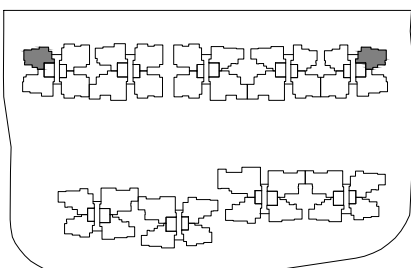
**TYPE A2-T**

71 sq m / 764 sq ft

#15 - 01.

Mirror Unit.

#15 - 18.



Area includes A/C ledge, balcony, PES, roof terrace and void (where applicable). Orientation and facings will differ depending on the unit you are purchasing (please refer to the key plan). All plans are not to scale and subject to changes as may be required by relevant authorities. All floor areas are estimated and subjected to final survey.



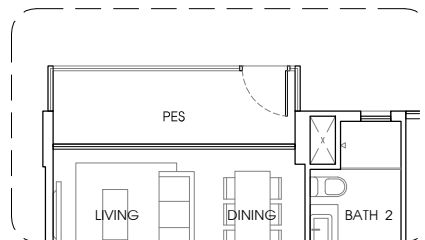
### TYPE B1

84 sq m / 904 sq ft

#02 - 10 to #14 - 10, #02 - 24 to #14 - 24,  
#02 - 32 to #14 - 32.

Mirror Unit.

#02 - 13 to #14 - 13, #02 - 27 to #14 - 27,  
#02 - 35 to #14 - 35.



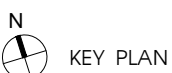
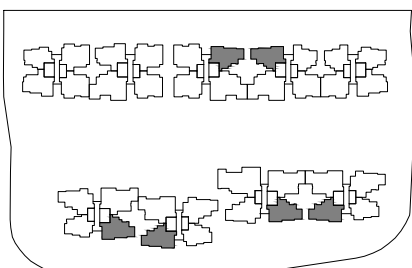
### TYPE B1-P

85 sq m / 915 sq ft

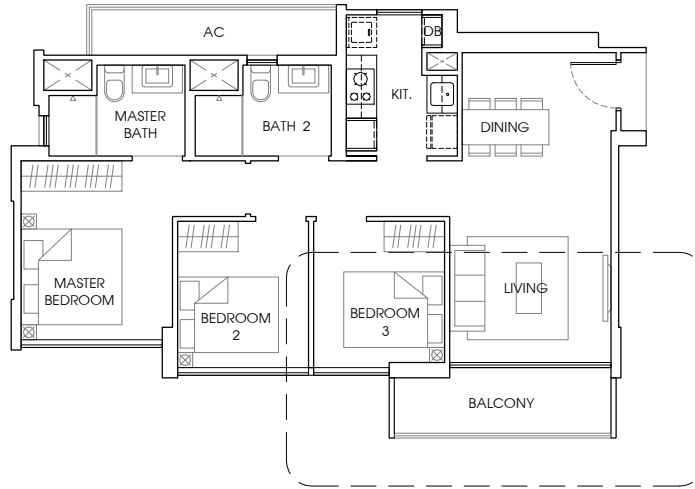
#01 - 10, #01 - 24, #01 - 32.

Mirror Unit.

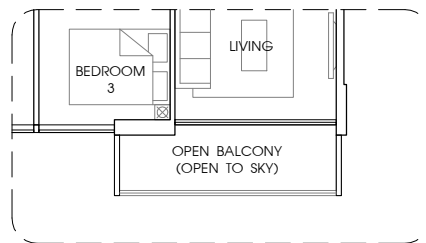
#01 - 13, #01 - 27, #01 - 35.



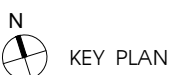
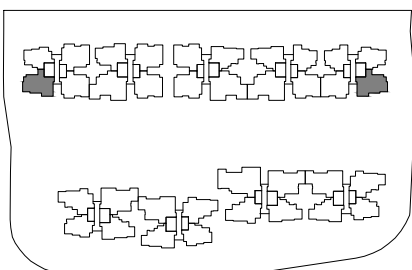
Area includes A/C ledge, balcony, PES, roof terrace and void (where applicable). Orientation and facings will differ depending on the unit you are purchasing (please refer to the key plan). All plans are not to scale and subject to changes as may be required by relevant authorities. All floor areas are estimated and subjected to final survey.



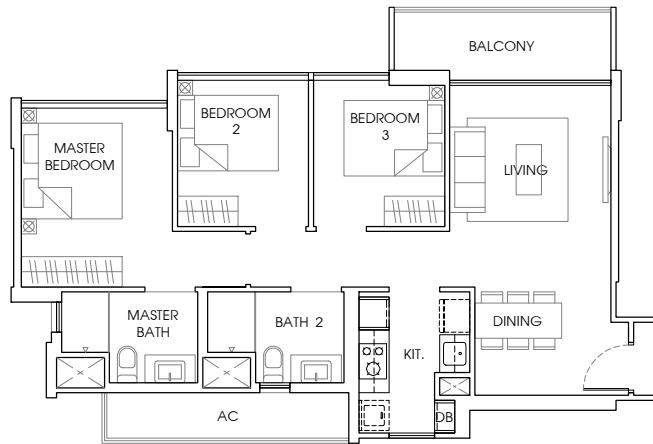
**TYPE B2**  
 85 sq m / 915 sq ft  
 #02 - 04 to #14 - 04.  
 Mirror Unit.  
 #02 - 19 to #14 - 19.



**TYPE B2-T**  
 85 sq m / 915 sq ft  
 Mirror Unit.  
 #15 - 19.



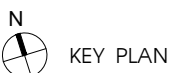
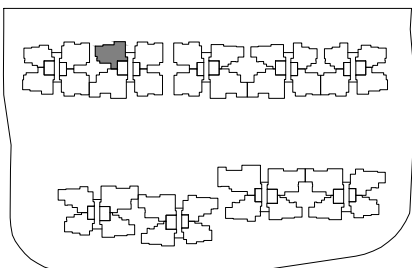
Area includes A/C ledge, balcony, PES, roof terrace and void (where applicable). Orientation and facings will differ depending on the unit you are purchasing (please refer to the key plan). All plans are not to scale and subject to changes as may be required by relevant authorities. All floor areas are estimated and subjected to final survey.



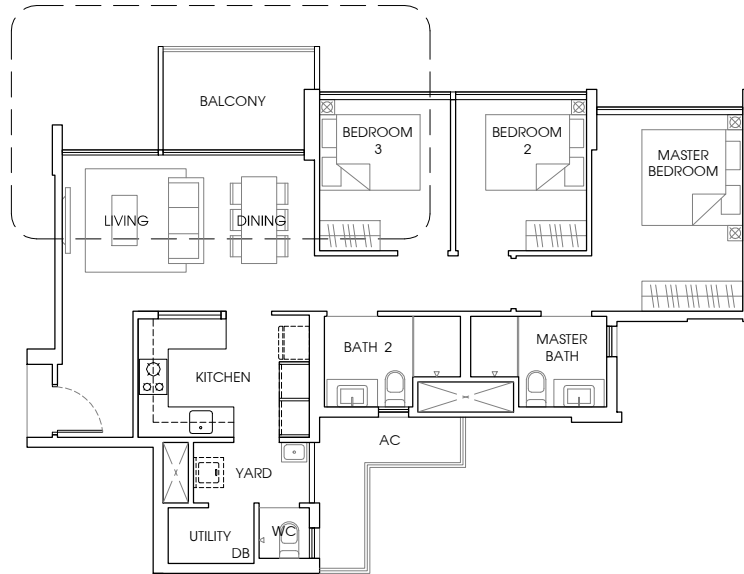
**TYPE B2a**

85 sq m / 915 sq ft

#02 - 05 to #14 - 05.



Area includes A/C ledge, balcony, PES, roof terrace and void (where applicable). Orientation and facings will differ depending on the unit you are purchasing (please refer to the key plan). All plans are not to scale and subject to changes as may be required by relevant authorities. All floor areas are estimated and subjected to final survey.



**TYPE B3**

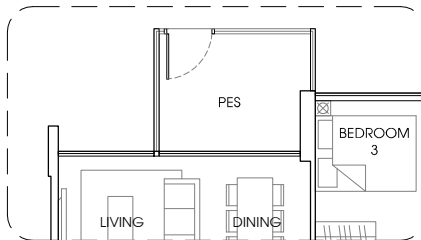
97 sq m / 1044 sq ft

#02 - 22 to #14 - 22, #02 - 28 to #14 - 28,

#02 - 30 to #14 - 30.

Mirror Unit.

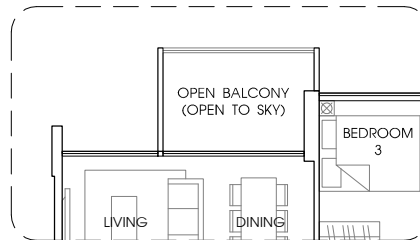
#02 - 33 to #14 - 33.



**TYPE B3-P**

98 sq m / 1055 sq ft

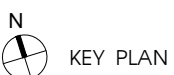
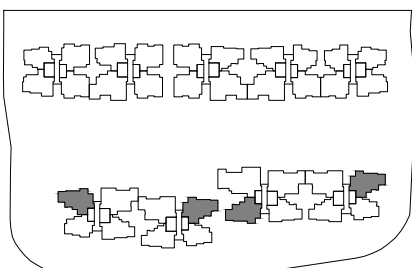
#01 - 28.



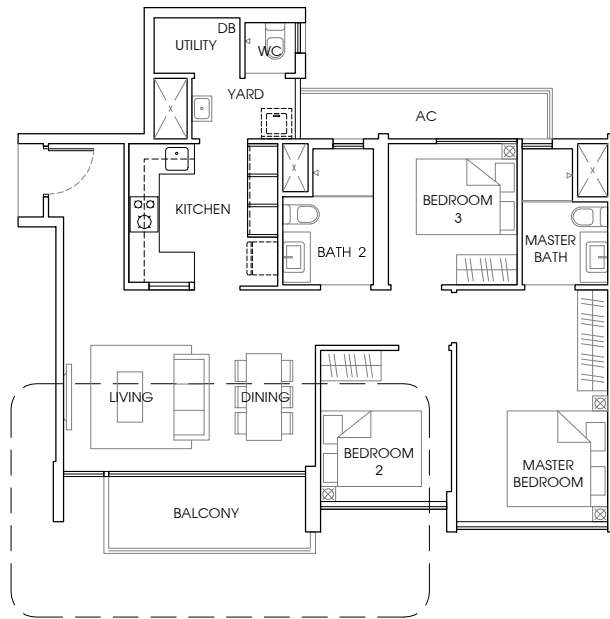
**TYPE B3-T**

97 sq m / 1044 sq ft

#15 - 22, #15 - 28, #15 - 30.



Area includes A/C ledge, balcony, PES, roof terrace and void (where applicable). Orientation and facings will differ depending on the unit you are purchasing (please refer to the key plan). All plans are not to scale and subject to changes as may be required by relevant authorities. All floor areas are estimated and subjected to final survey.



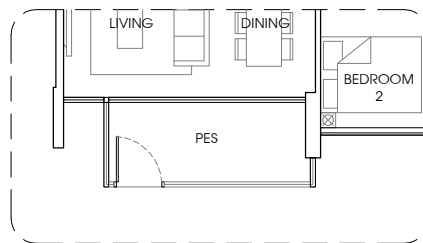
**TYPE B3a**

96 sq m / 1033 sq ft

#02 - 03 to #14 - 03, #02 - 07 to #14 - 07,  
#02 - 15 to #14 - 15.

Mirror Unit.

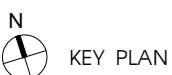
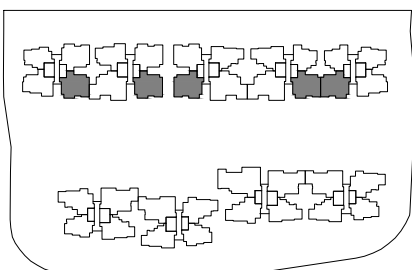
#02 - 12 to #14 - 12, #02 - 20 to #14 - 20.



**TYPE B3a-P**

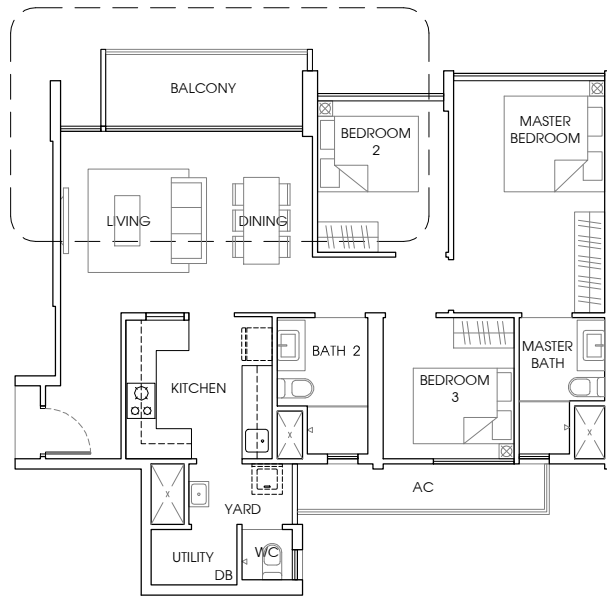
97 sq m / 1044 sq ft

#01 - 03.



Area includes A/C ledge, balcony, PES, roof terrace and void (where applicable). Orientation and facings will differ depending on the unit you are purchasing (please refer to the key plan). All plans are not to scale and subject to changes as may be required by relevant authorities. All floor areas are estimated and subjected to final survey.





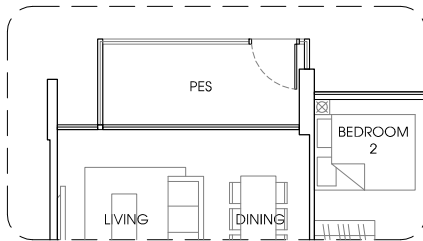
**TYPE B3b**

96 sq m / 1033 sq ft

#02 - 02 to #14 - 02, #02 - 06 to #14 - 06.

Mirror Unit.

#02 - 09 to #14 - 09.



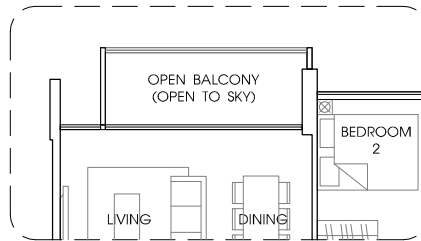
**TYPE B3b-P**

97 sq m / 1044 sq ft

#01 - 06.

Mirror Unit.

#01 - 09.



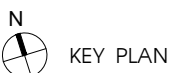
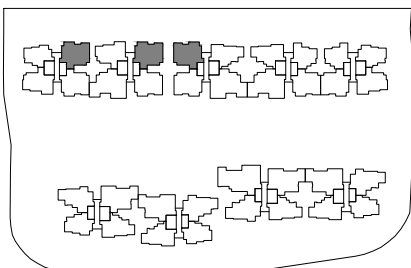
**TYPE B3b-T**

96 sq m / 1033 sq ft

#15 - 06.

Mirror Unit.

#15 - 09.



Area includes A/C ledge, balcony, PES, roof terrace and void (where applicable). Orientation and facings will differ depending on the unit you are purchasing (please refer to the key plan). All plans are not to scale and subject to changes as may be required by relevant authorities. All floor areas are estimated and subjected to final survey.



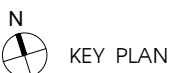
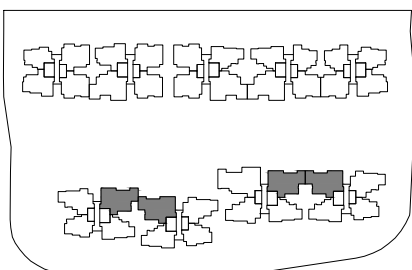
**TYPE C1**

118 sq m / 1270 sq ft

#02 - 21 to #14 - 21, #02 - 29 to #14 - 29.

Mirror Unit.

#02 - 26 to #14 - 26, #02 - 34 to #14 - 34.



Area includes A/C ledge, balcony, PES, roof terrace and void (where applicable). Orientation and facings will differ depending on the unit you are purchasing (please refer to the key plan). All plans are not to scale and subject to changes as may be required by relevant authorities. All floor areas are estimated and subjected to final survey.



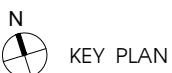
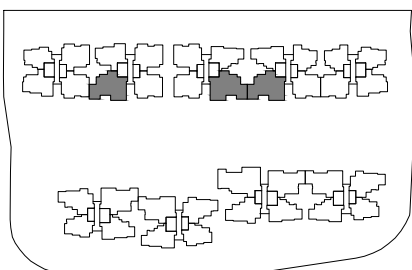
**TYPE C2**

131 sq m / 1410sq ft

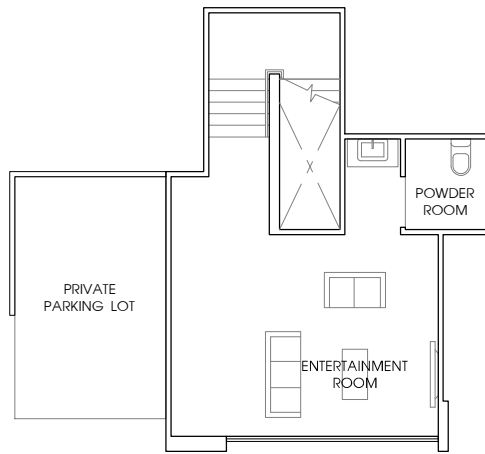
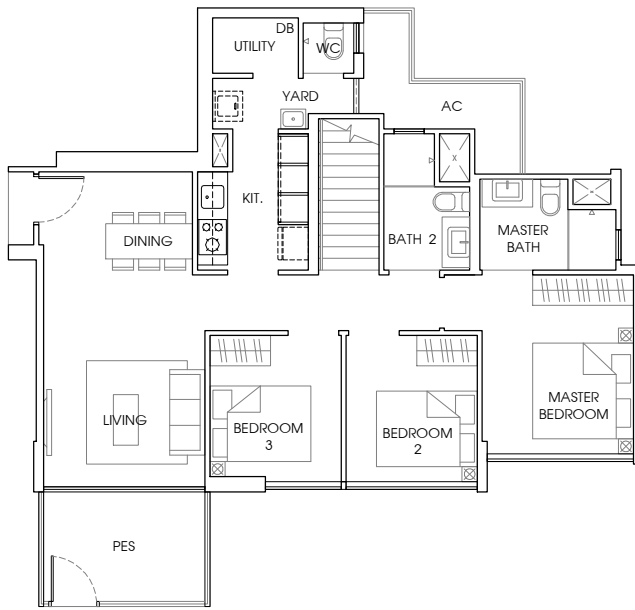
#02 - 08 to #14 - 08, #02 - 16 to #14 - 16.

Mirror Unit.

#02 - 11 to #14 - 11.



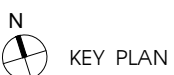
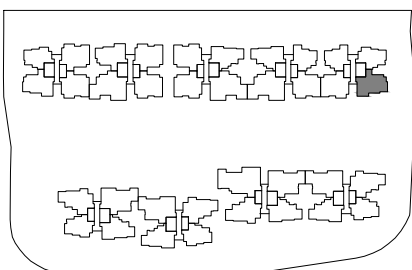
Area includes A/C ledge, balcony, PES, roof terrace and void (where applicable). Orientation and facings will differ depending on the unit you are purchasing (please refer to the key plan). All plans are not to scale and subject to changes as may be required by relevant authorities. All floor areas are estimated and subjected to final survey.



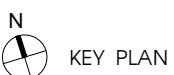
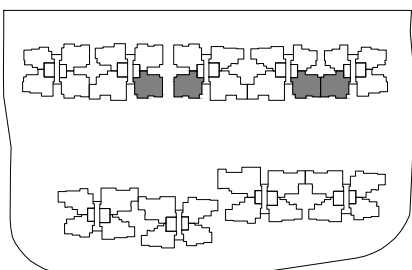
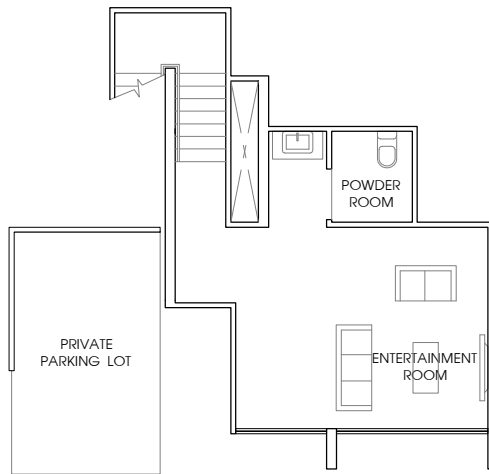
**TYPE C3-P**

153 sq m / 1647 sq ft

#01 - 19.



Area includes A/C ledge, balcony, PES, roof terrace and void (where applicable). Orientation and facings will differ depending on the unit you are purchasing (please refer to the key plan). All floor areas are not to scale and subject to changes as may be required by relevant authorities. All floor areas are estimated and subjected to final survey.



**TYPE C4-P**

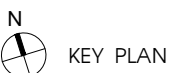
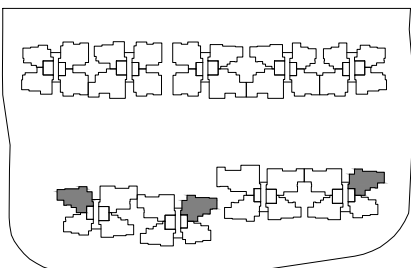
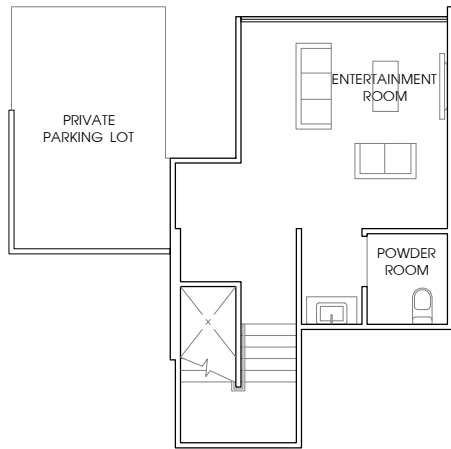
156 sq m / 1679 sq ft

#01 - 07, #01 - 15.

Mirror Unit.

#01 - 12, #01 - 20.

Area includes A/C ledge, balcony, PES, roof terrace and void (where applicable). Orientation and facings will differ depending on the unit you are purchasing (please refer to the key plan). All plans are not to scale and subject to changes as may be required by relevant authorities. All floor areas are estimated and subjected to final survey.



**TYPE C5-P**

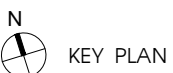
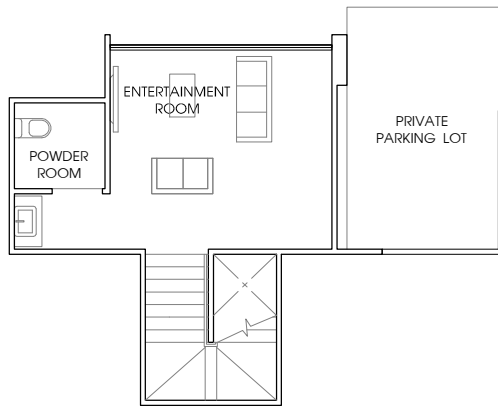
155 sq m / 1668 sq ft

#01 - 22, #01 - 30.

Mirror Unit.

#01 - 33.

Area includes A/C ledge, balcony, PES, roof terrace and void (where applicable). Orientation and facings will differ depending on the unit you are purchasing (please refer to the key plan). All plans are not to scale and subject to changes as may be required by relevant authorities. All floor areas are estimated and subjected to final survey.



**TYPE C6-P**

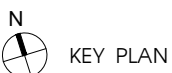
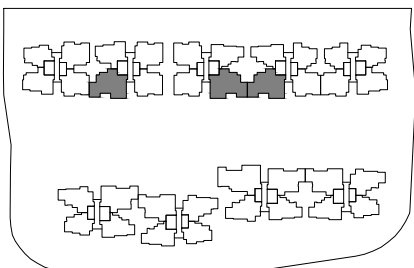
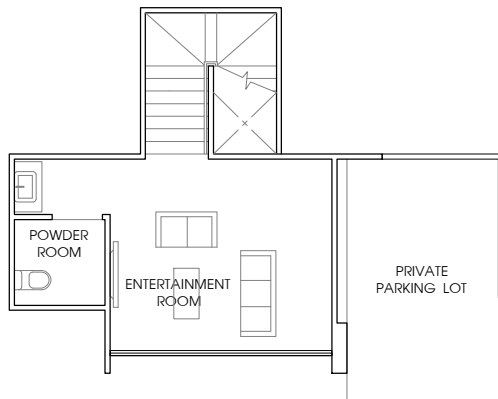
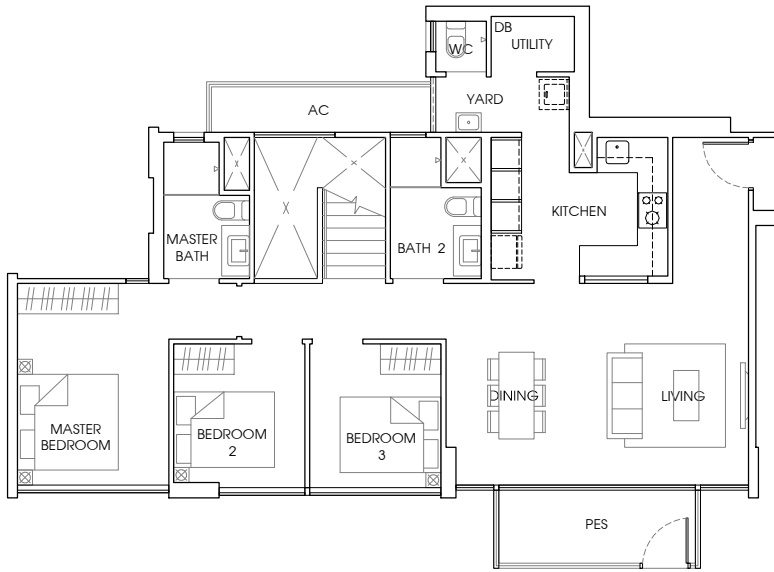
159 sq m / 1712 sq ft

#01 - 21, #01 - 29.

Mirror Unit.

#01 - 26, #01 - 34.

Area includes A/C ledge, balcony, PES, roof terrace and void (where applicable). Orientation and facings will differ depending on the unit you are purchasing (please refer to the key plan). All plans are not to scale and subject to changes as may be required by relevant authorities. All floor areas are estimated and subjected to final survey.



**TYPE C7-P**

160 sq m / 1722 sq ft

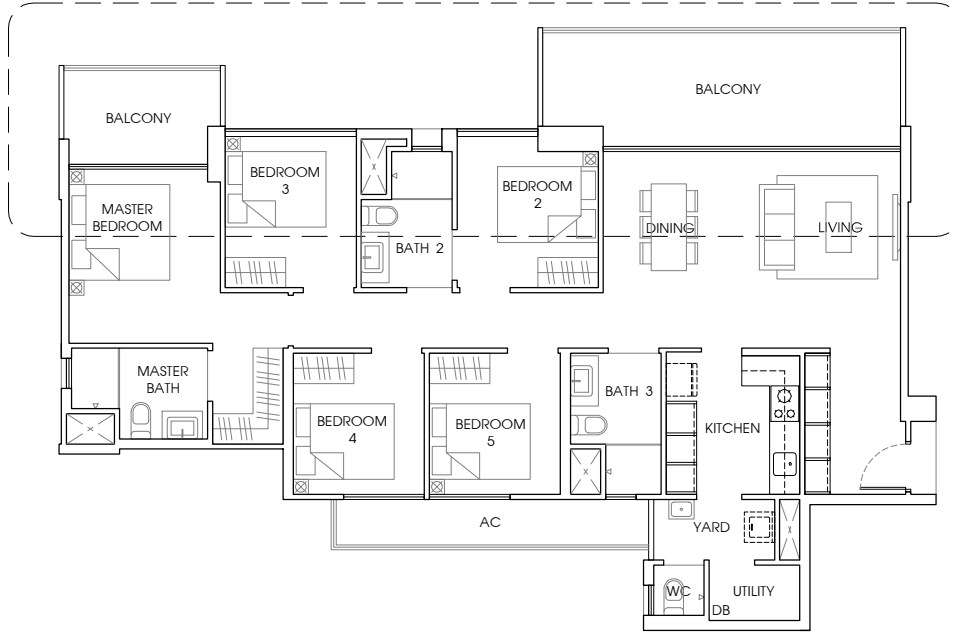
#01 - 08, #01-16.

Mirror Unit.

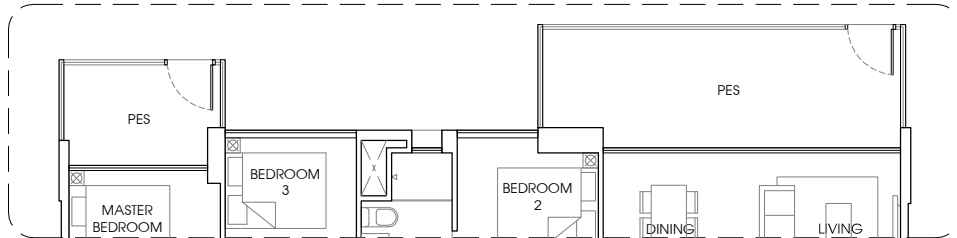
#01 - 11.

Area includes A/C ledge, balcony, PES, roof terrace and void (where applicable). Orientation and facings will differ depending on the unit you are purchasing (please refer to the key plan). All plans are not to scale and subject to changes as may be required by relevant authorities. All floor areas are estimated and subjected to final survey.

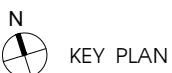
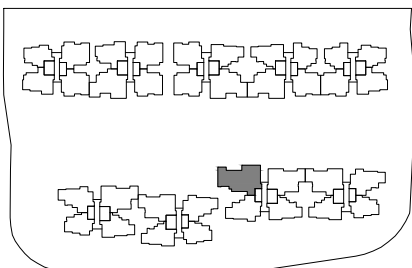




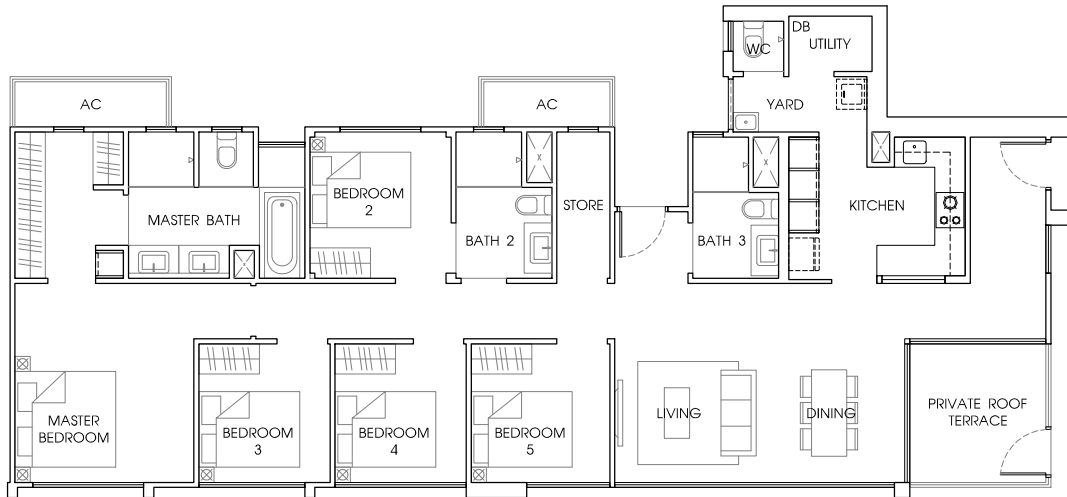
**TYPE D**  
 148 sq m / 1593ft  
 #02 - 25 to #14 - 25.



**TYPE D-P**  
 149 sq m / 1604 sq ft  
 #01 - 25.



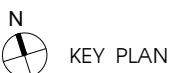
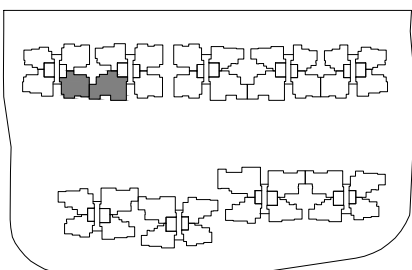
Area includes A/C ledge, balcony, PES, roof terrace and void (where applicable). Orientation and facings will differ depending on the unit you are purchasing (please refer to the key plan). All plans are not to scale and subject to changes as may be required by relevant authorities. All floor areas are estimated and subjected to final survey.



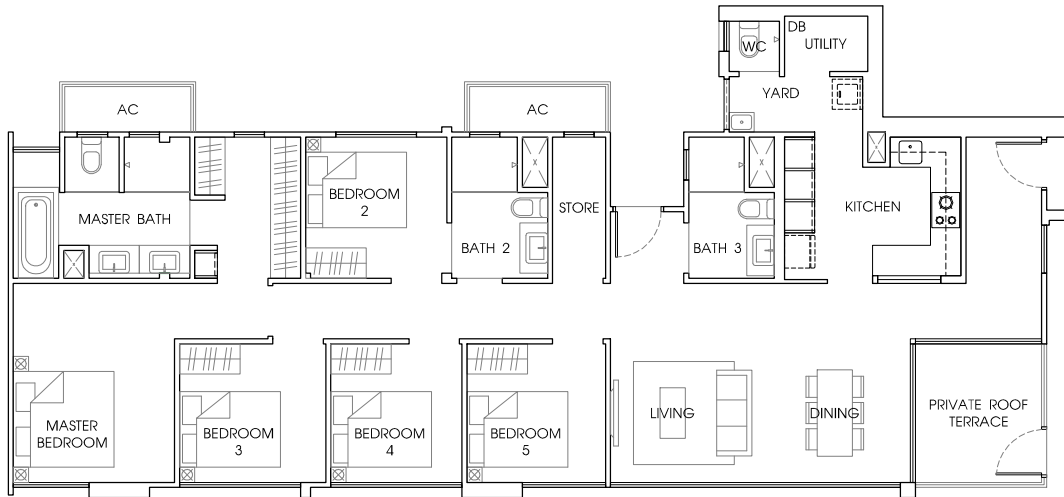
**TYPE PH1**

155 sq m / 1668 sq ft

#15 - 08.



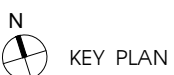
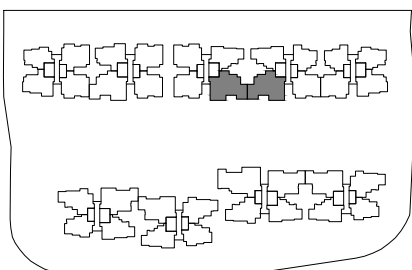
Area includes A/C ledge, balcony, PES, roof terrace and void (where applicable). Orientation and facings will differ depending on the unit you are purchasing (please refer to the key plan). All plans are not to scale and subject to changes as may be required by relevant authorities. All floor areas are estimated and subjected to final survey.



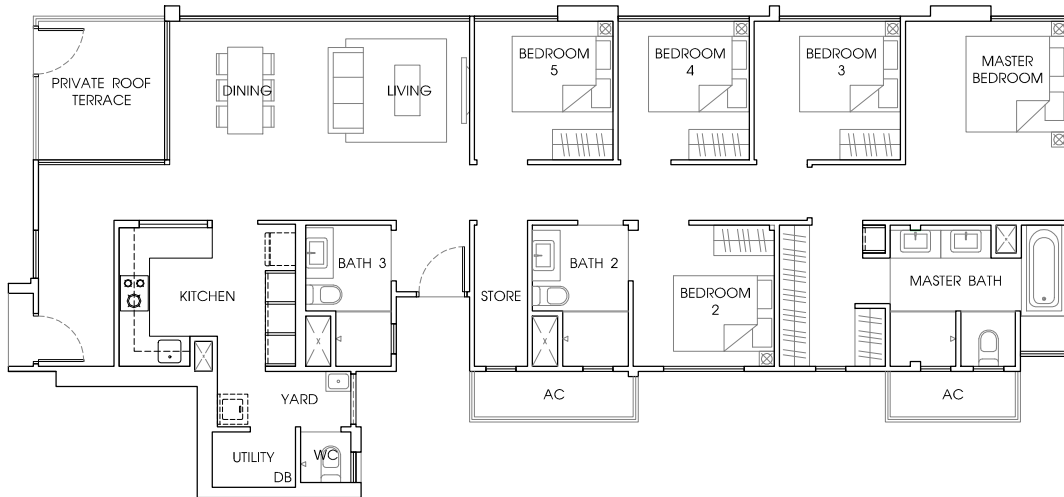
**TYPE PH2**

154 sq m / 1658 sq ft

#15 - 16.



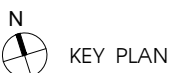
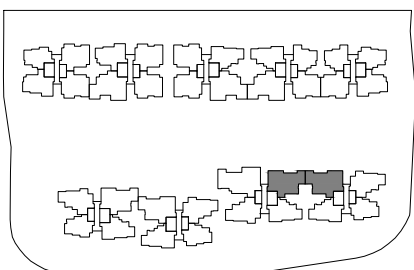
Area includes A/C ledge, balcony, PES, roof terrace and void (where applicable). Orientation and facings will differ depending on the unit you are purchasing (please refer to the key plan). All plans are not to scale and subject to changes as may be required by relevant authorities. All floor areas are estimated and subjected to final survey.



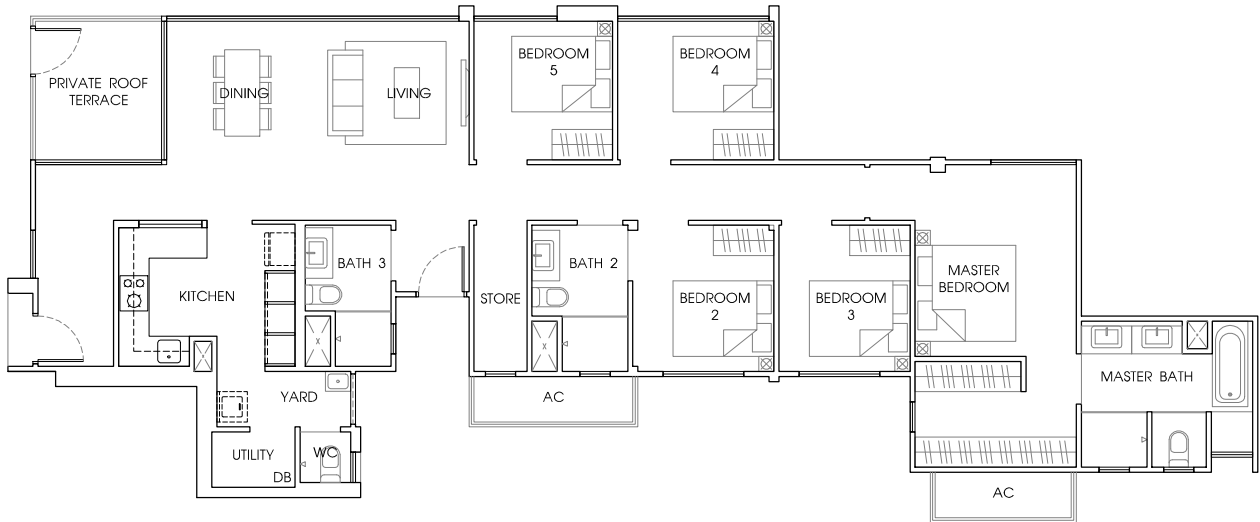
**TYPE PH3**

154 sq m / 1658 sq ft

#15 - 26.



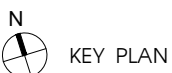
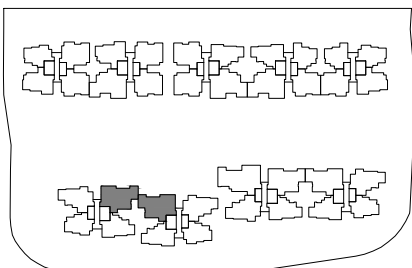
Area includes A/C ledge, balcony, PES, roof terrace and void (where applicable). Orientation and facings will differ depending on the unit you are purchasing (please refer to the key plan). All plans are not to scale and subject to changes as may be required by relevant authorities. All floor areas are estimated and subjected to final survey.



**TYPE PH4**

157 sq m / 1690 sq ft

#15 - 34.



Area includes A/C ledge, balcony, PES, roof terrace and void (where applicable). Orientation and facings will differ depending on the unit you are purchasing (please refer to the key plan). All plans are not to scale and subject to changes as may be required by relevant authorities. All floor areas are estimated and subjected to final survey.