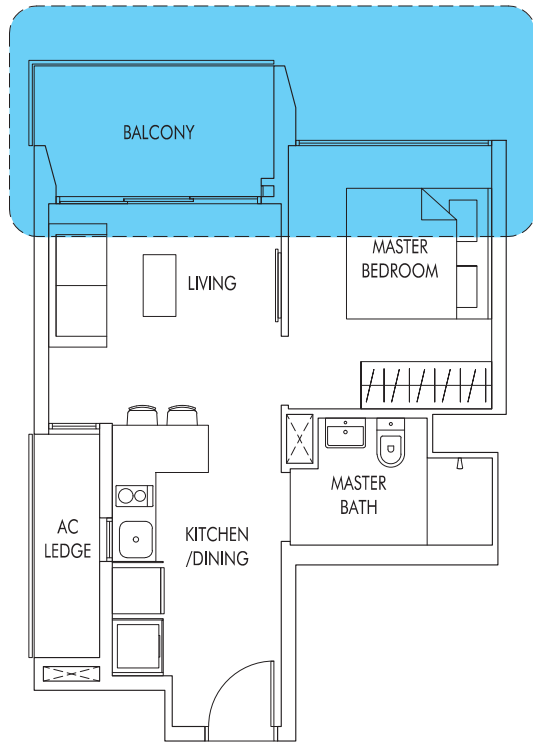




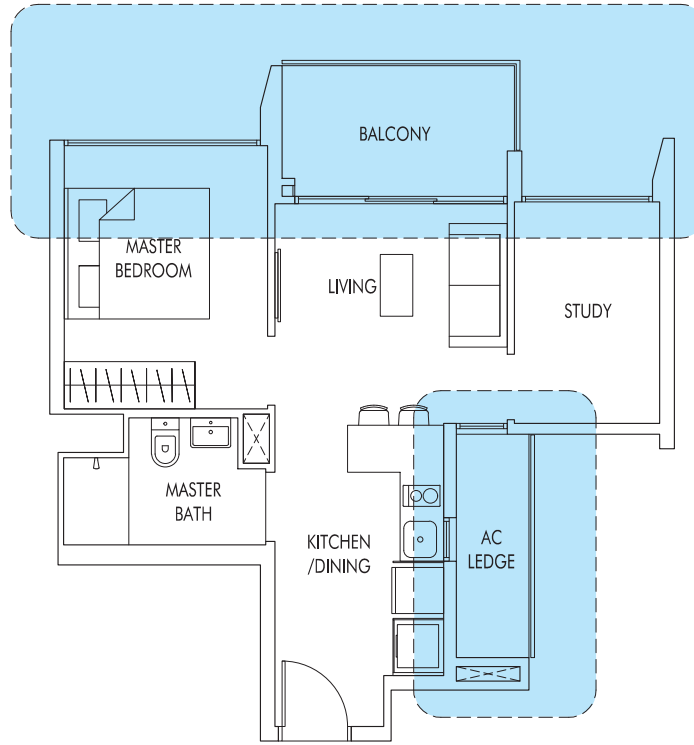
# 1 Bedroom / 1 + Study



## TYPE A1

46 sq m | 495 sq ft

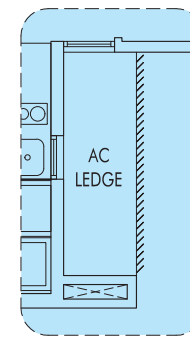
#02-11 to #25-11 (mirror)  
#02-15 to #25-15



## TYPE A2

53 sq m | 570 sq ft

#02-01 to #23-01  
#02-05 to #24-05 (mirror)  
#02-06 to #25-06  
#02-10 to #25-10 (mirror)

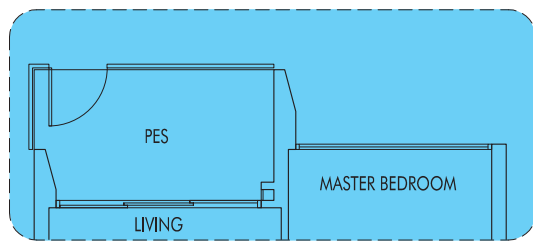


## TYPE A2a

53 sq m | 570 sq ft

WITH VERTICAL LOUVERS  
AS PER DSTA REQUIREMENT

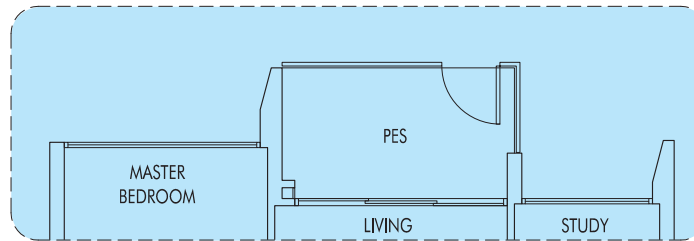
#24-01



## TYPE A1P

46 sq m | 495 sq ft  
(including PES of 6 sq m/65 sq ft)

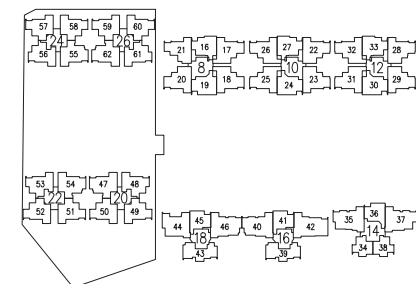
#01-11 (mirror)  
#01-15



## TYPE A2P

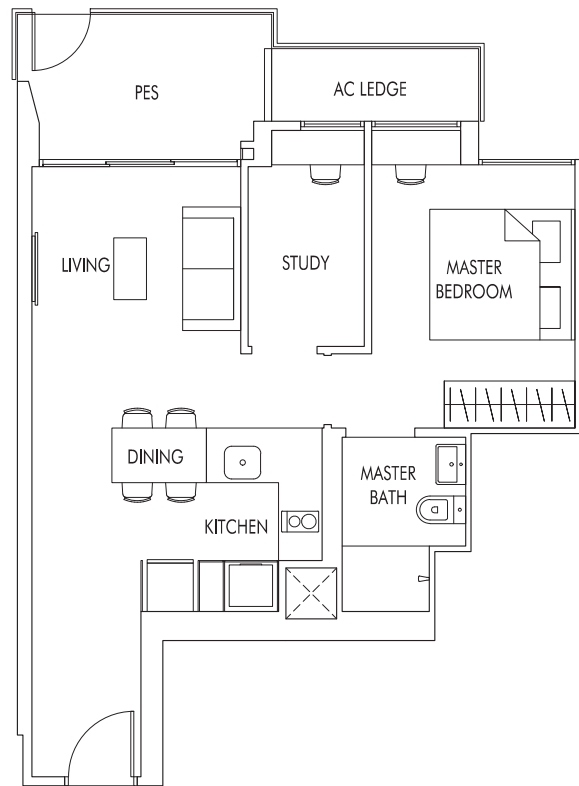
53 sq m | 570 sq ft  
(including PES of 6 sq m/65 sq ft)

#01-01  
#01-05 (mirror)  
#01-06  
#01-10 (mirror)



# 1 + Study

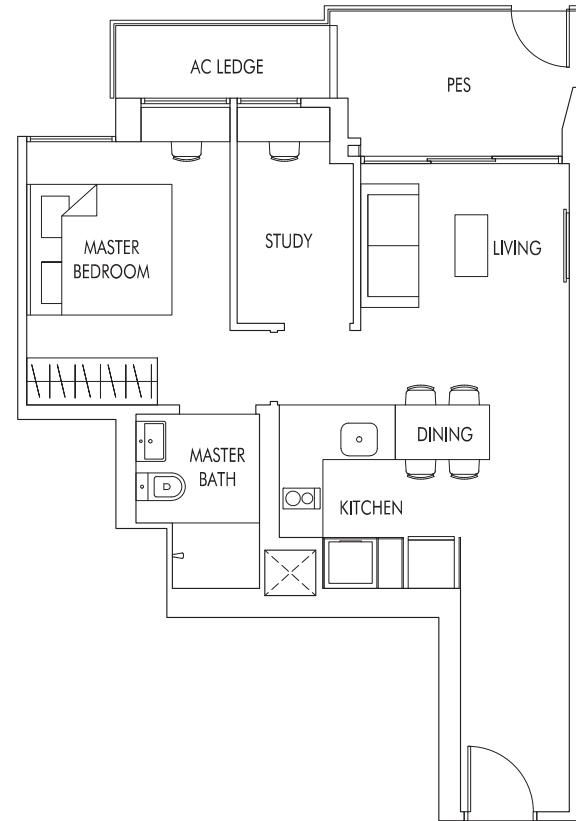
"Our first nest in Singapore's Biggest EC project!  
The 1<sup>st</sup> EC to feature 1-Bedroom and 1+Study!"



### TYPE A3P

59 sq m | 635 sq ft  
(including PES of 7 sq m/75 sq ft)

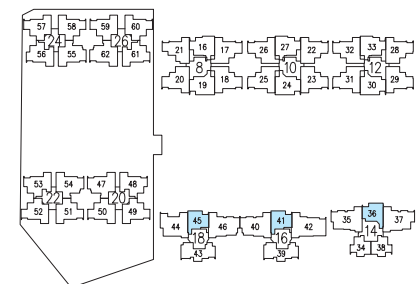
#01-41  
#01-45



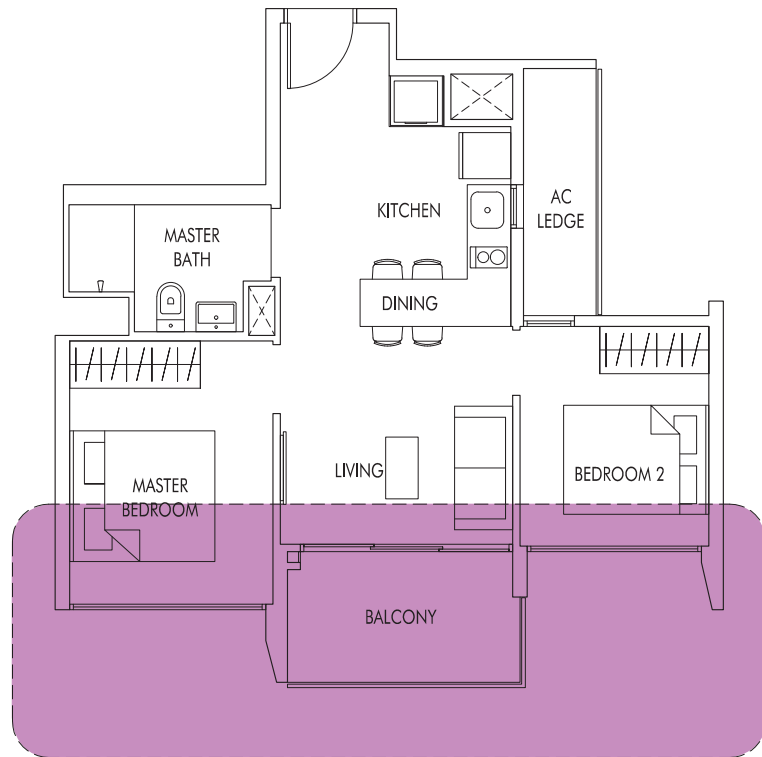
### TYPE A4P

60 sq m | 646 sq ft  
(including PES of 7 sq m/75 sq ft)

#01-36



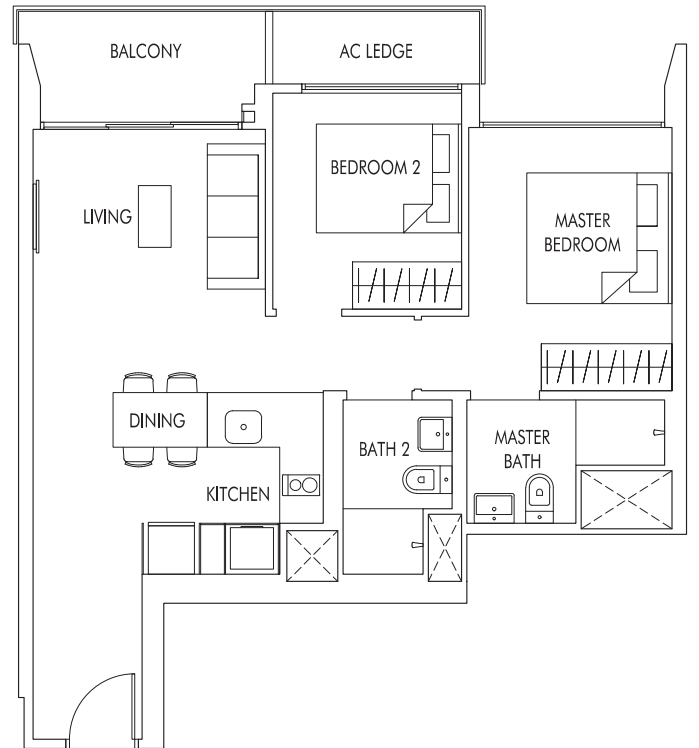
# 2 Bedroom



## TYPE B1

57 sq m | 614 sq ft

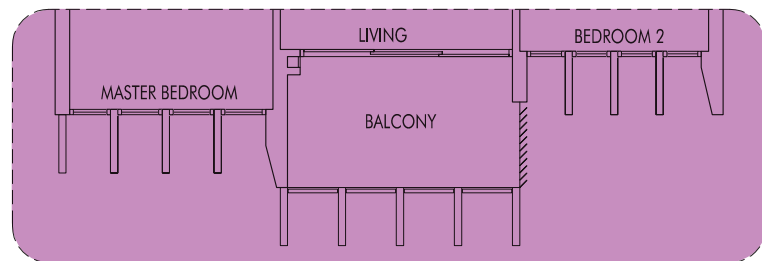
#02-34 to #23-34 (mirror)  
#02-38 to #23-38



## TYPE B2

66 sq m | 710 sq ft

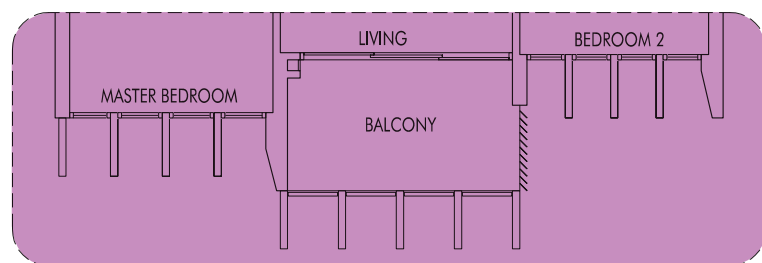
#02-41 to #21-41  
#02-45 to #21-45



## TYPE B1a

57 sq m | 614 sq ft  
WITH VERTICAL LOUVERS & FINS  
AS PER DSTA REQUIREMENT

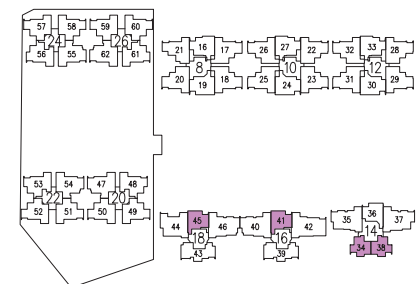
#24-38  
#25-38



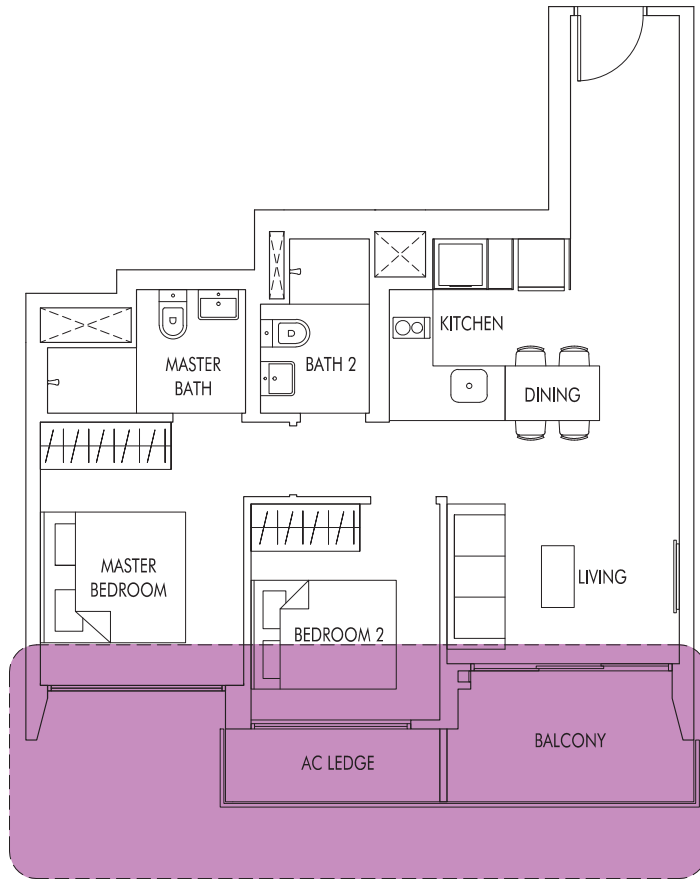
## TYPE B1b

57 sq m | 614 sq ft  
WITH VERTICAL LOUVERS & FINS  
AS PER DSTA REQUIREMENT

#24-34 (mirror)  
#25-34 (mirror)



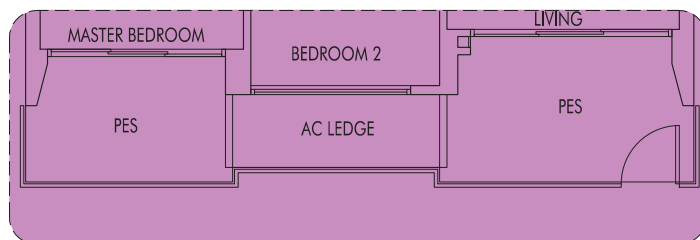
# 2 Bedroom



## TYPE B3

68 sq m | 732 sq ft

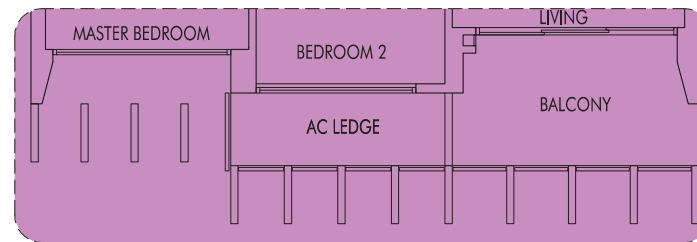
#02-03 to #23-03  
 #02-08 to #23-08  
 #02-13 to #23-13  
 #02-36 to #25-36 (mirror)



## TYPE B3P

74 sq m | 797 sq ft  
 (including PES of 12 sq m/129 sq ft)

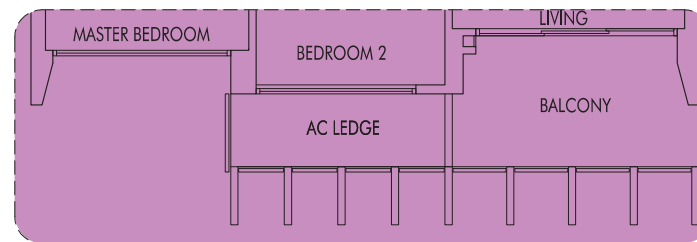
#01-03  
 #01-08  
 #01-13



## TYPE B3a

68 sq m | 732 sq ft  
 WITH VERTICAL LOUVERS & FINS  
 AS PER DSTA REQUIREMENT

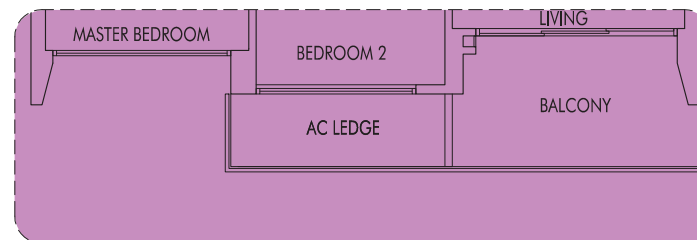
#24-03



## TYPE B3b

68 sq m | 732 sq ft  
 WITH VERTICAL LOUVERS & FINS  
 AS PER DSTA REQUIREMENT

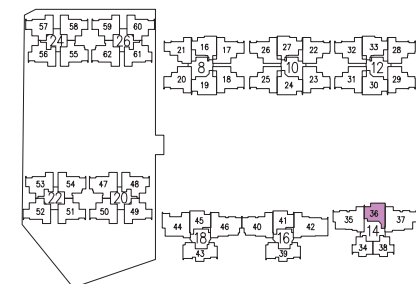
#24-08  
 #25-08



## TYPE B3c

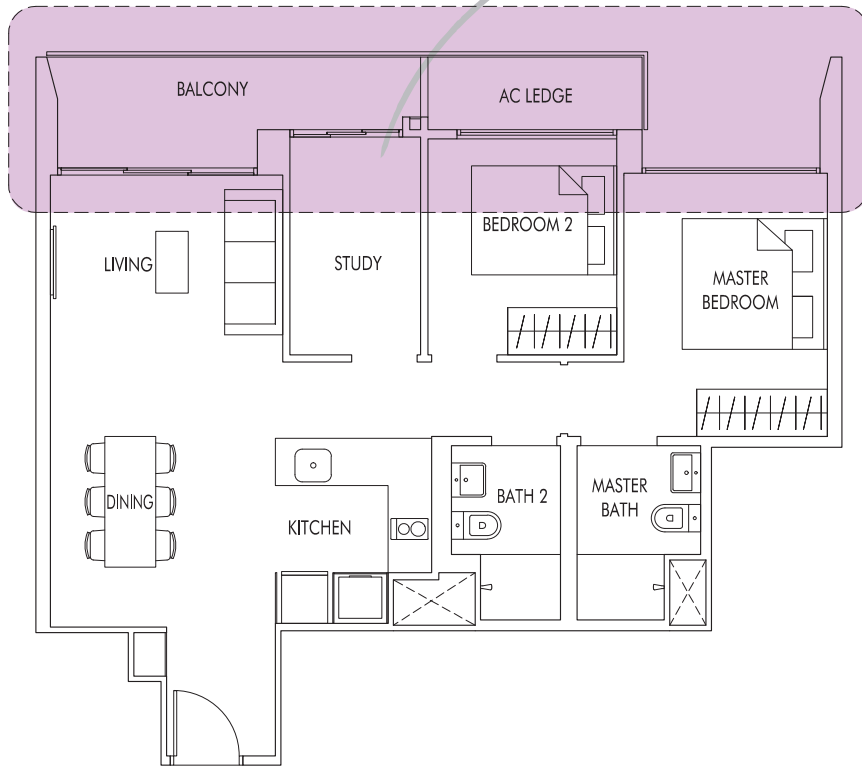
68 sq m | 732 sq ft  
 WITH VERTICAL LOUVERS  
 AS PER DSTA REQUIREMENT

#24-13  
 #25-13



# 2 + Study

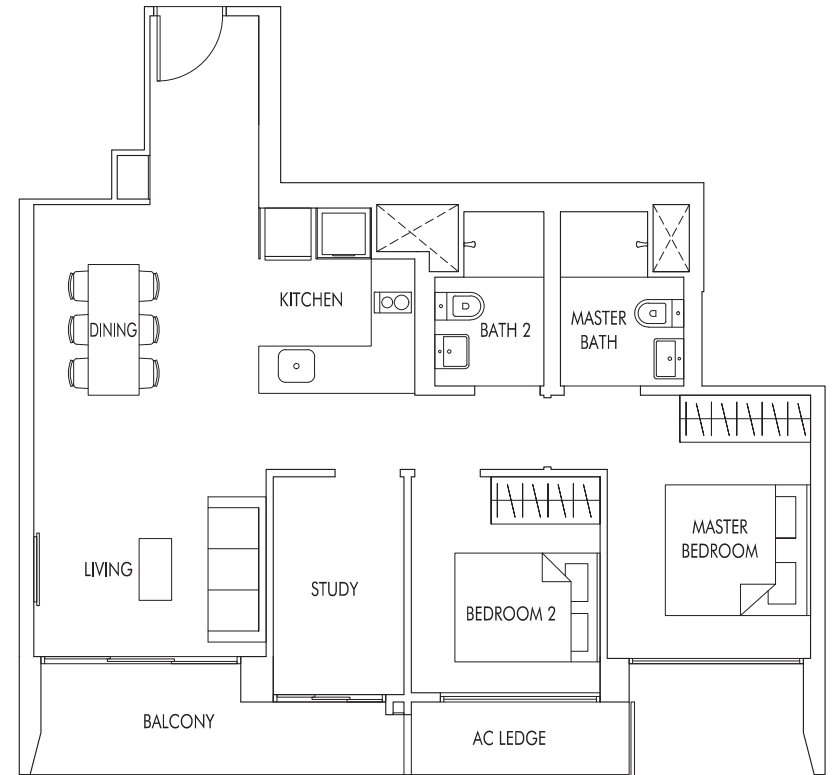
"I can turn the extra room into an office, allowing me to keep an eye on my toddler at home."



## TYPE B4

79 sq m | 850 sq ft

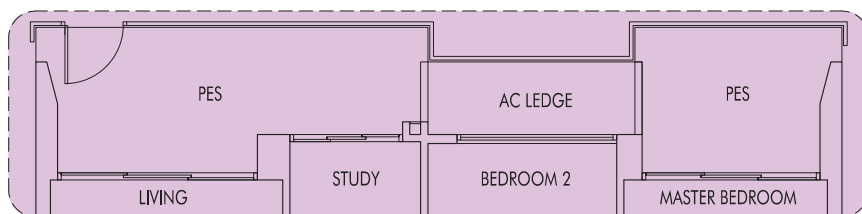
#02-16 to #22-16 (mirror)  
#02-27 to #24-27  
#02-33 to #24-33



## TYPE B5

81 sq m | 872 sq ft

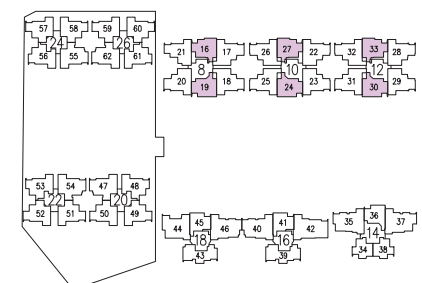
#02-19 to #22-19 (mirror)  
#02-24 to #23-24  
#02-30 to #23-30



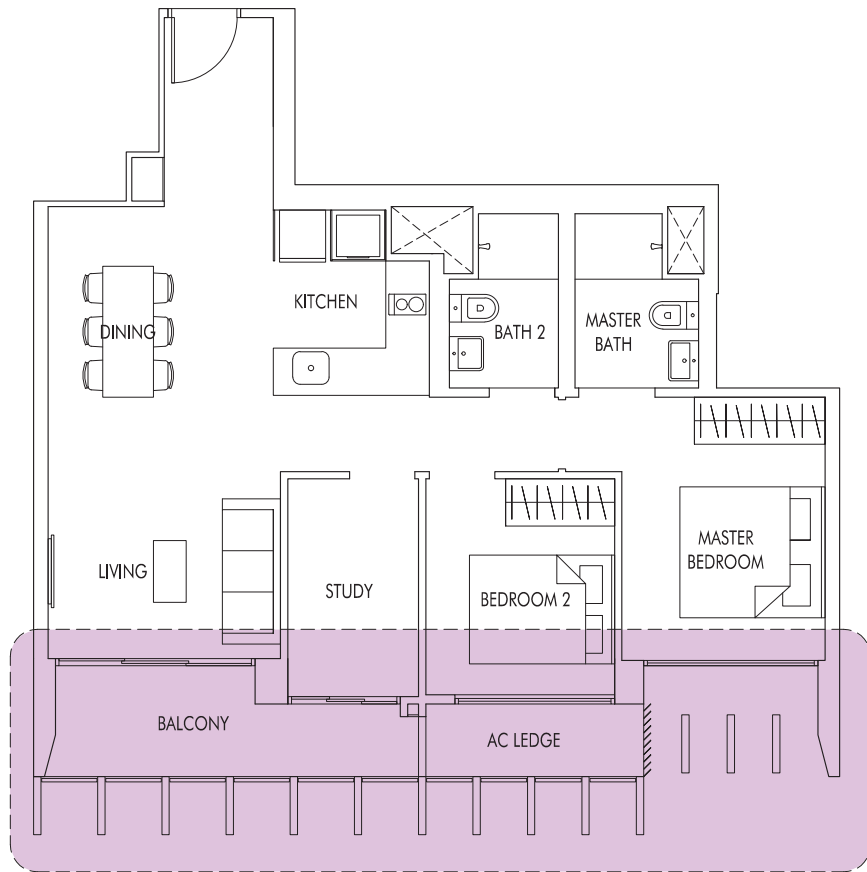
## TYPE B4P

87 sq m | 936 sq ft  
(including PES of 15 sq m/161 sq ft)

#01-16 (mirror)  
#01-27  
#01-33

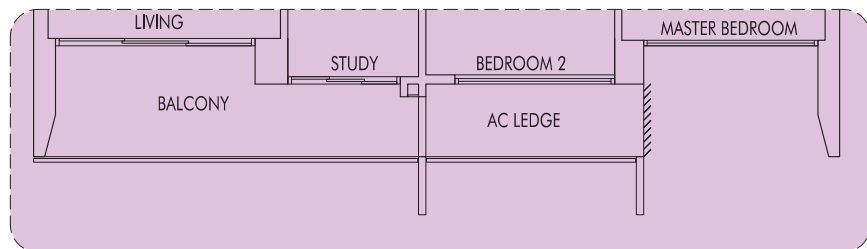


# 2 Bedroom / 2 + Study



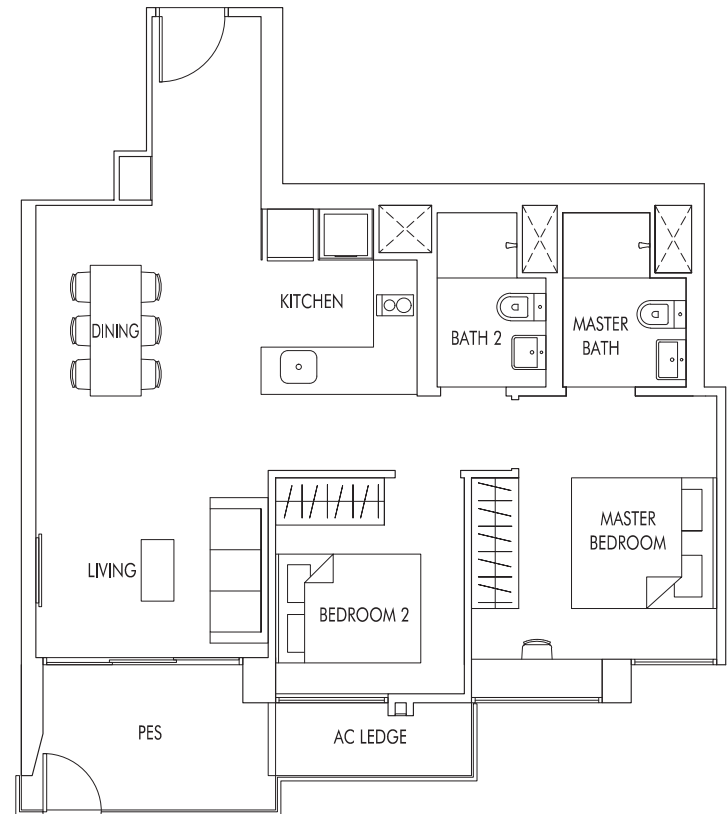
**TYPE B5a**  
81 sq m | 872 sq ft  
WITH VERTICAL LOUVERS & FINS  
AS PER DSTA REQUIREMENT

#24-30



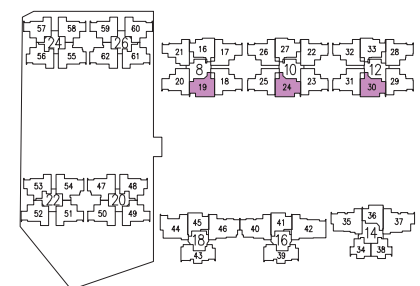
**TYPE B5b**  
81 sq m | 872 sq ft  
WITH VERTICAL LOUVERS & FINS  
AS PER DSTA REQUIREMENT

#24-24

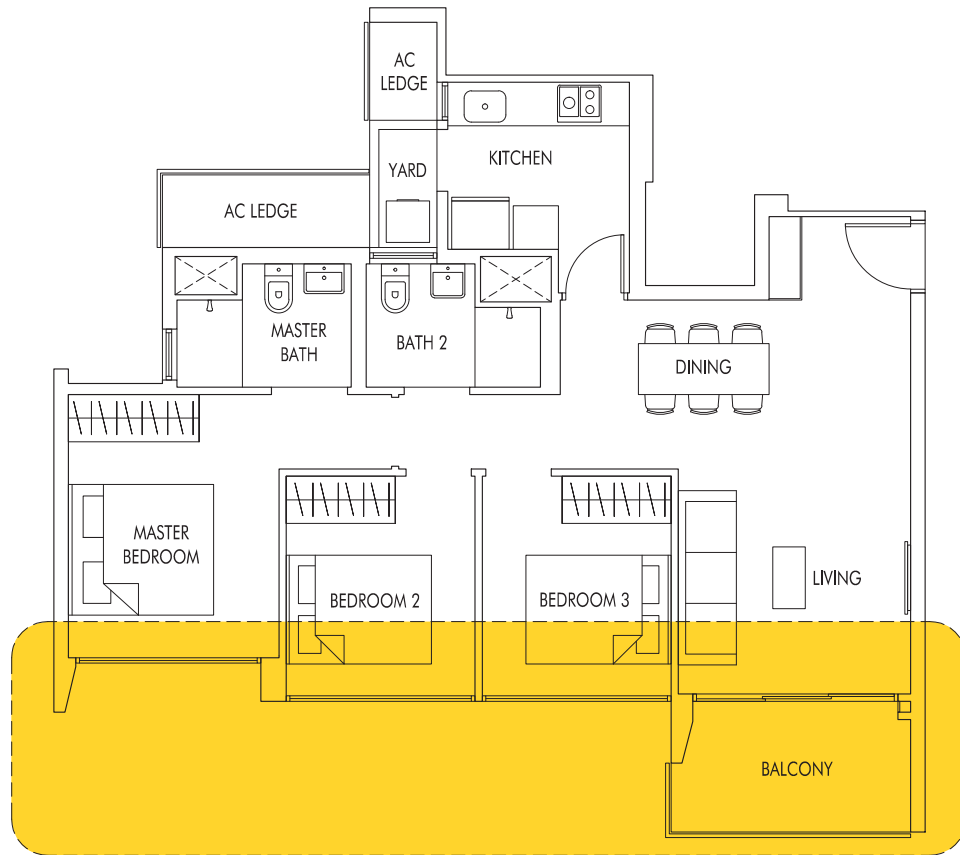


**TYPE B5P**  
75 sq m | 807 sq ft  
(including PES of 7 sq m/75 sq ft)

#01-19 (mirror)  
#01-24  
#01-30



# 3 Bedroom



## TYPE C1

86 sq m | 926 sq ft

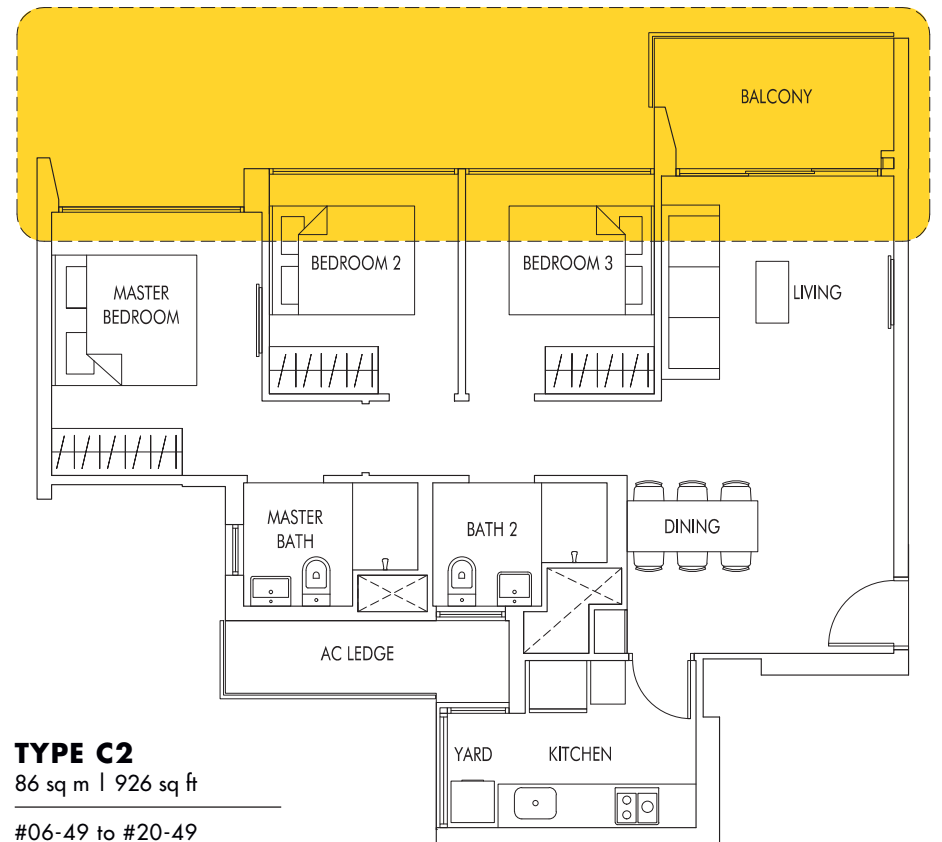
#06-48 to #20-48  
 #06-53 to #20-53 (mirror)  
 #06-56 to #19-56  
 #06-61 to #19-61 (mirror)



## TYPE C1P

93 sq m | 1001 sq ft  
 (including PES of 13 sq m/140 sq ft)

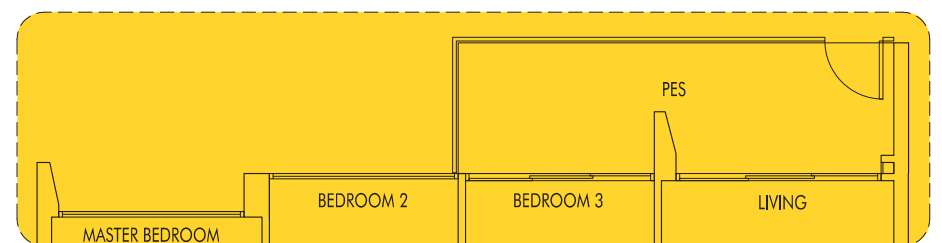
#05-48  
 #05-53 (mirror)  
 #05-56  
 #05-61 (mirror)



## TYPE C2

86 sq m | 926 sq ft

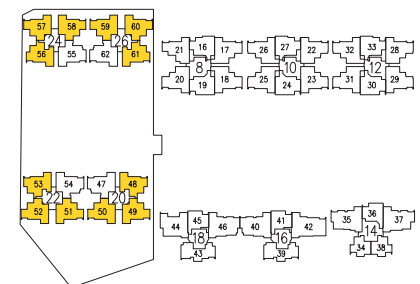
#06-49 to #20-49  
 #06-50 to #20-50 (mirror)  
 #06-51 to #20-51  
 #06-52 to #20-52 (mirror)  
 #06-57 to #19-57  
 #06-58 to #19-58 (mirror)  
 #06-59 to #19-59  
 #06-60 to #19-60 (mirror)



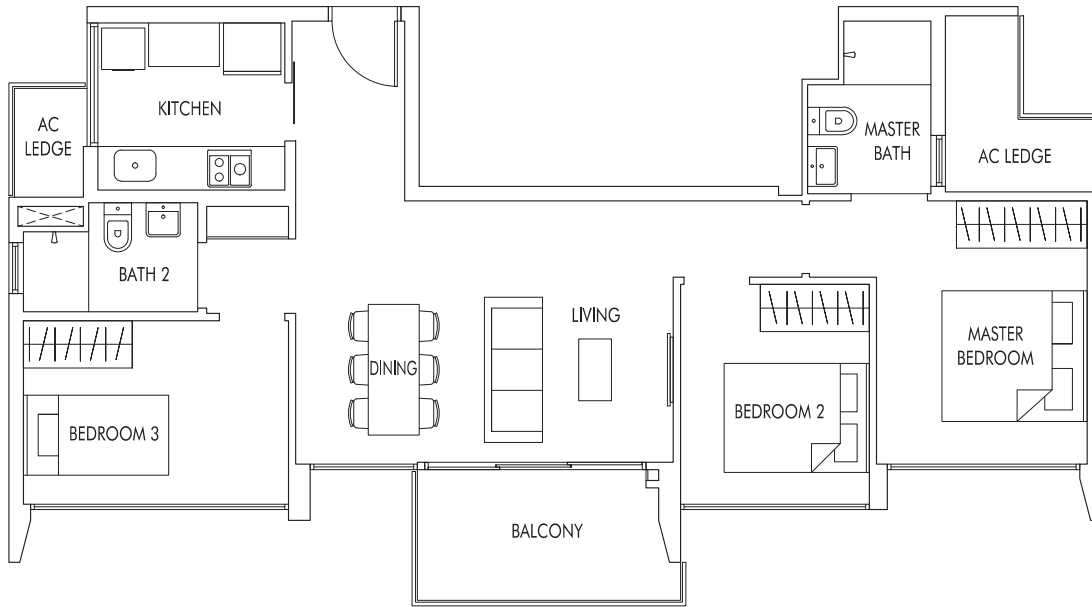
## TYPE C2P

91 sq m | 980 sq ft  
 (including PES of 11 sq m/118 sq ft)

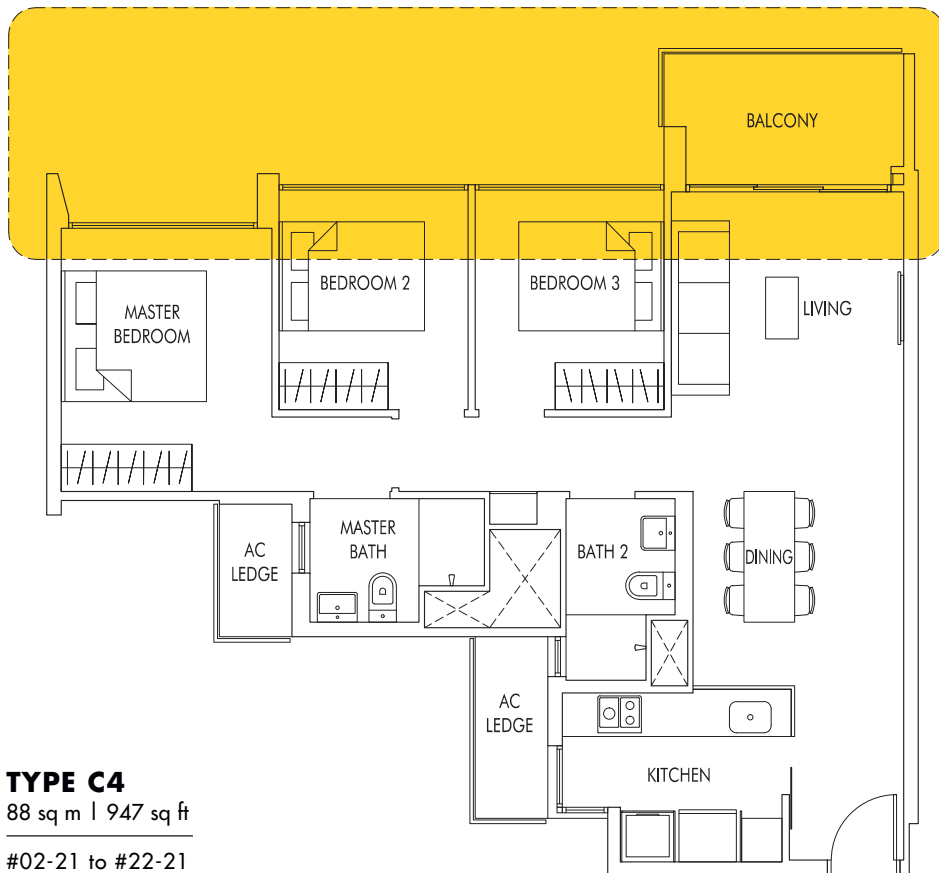
#05-49  
 #05-50 (mirror)  
 #05-51  
 #05-52 (mirror)  
 #05-57  
 #05-58 (mirror)  
 #05-59  
 #05-60 (mirror)



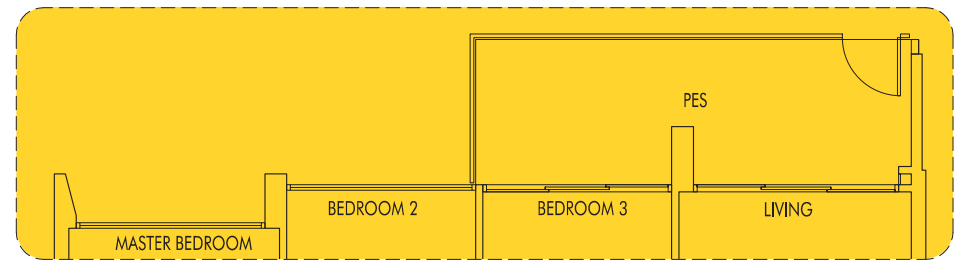
# 3 Bedroom



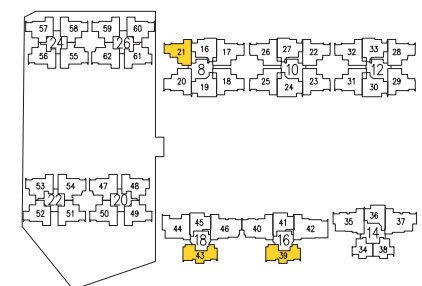
**TYPE C3**  
86 sq m | 926 sq ft  
#02-39 to #21-39  
#02-43 to #21-43



**TYPE C4**  
88 sq m | 947 sq ft  
#02-21 to #22-21

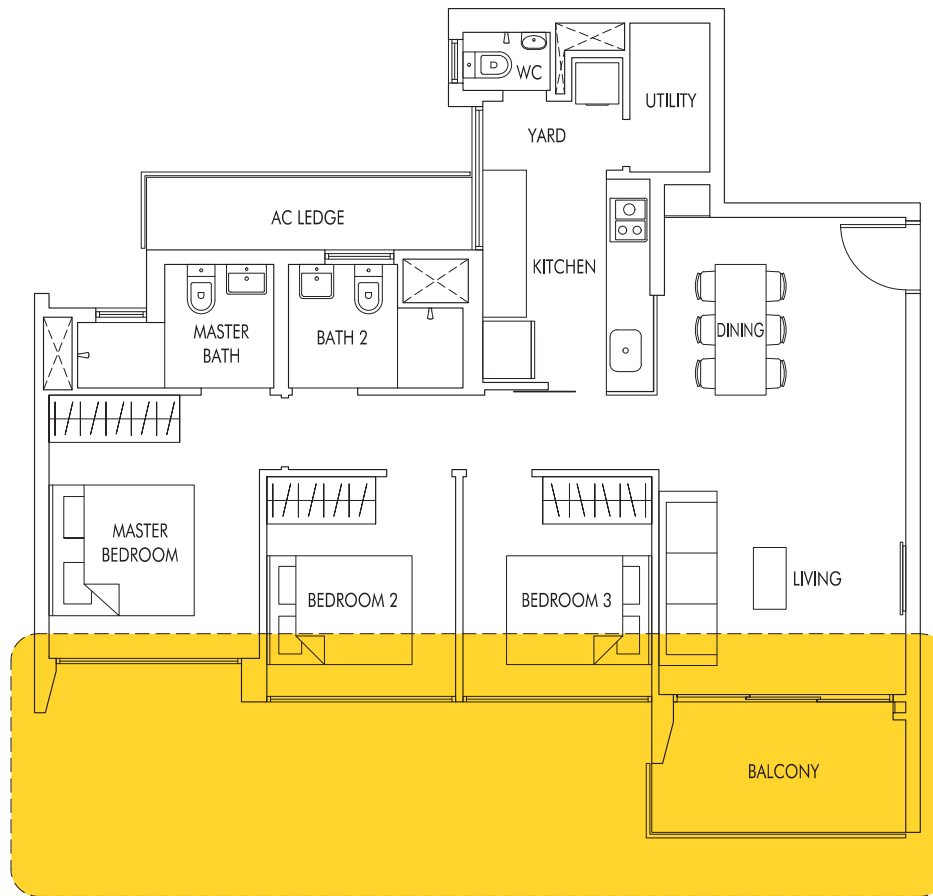


**TYPE C4P**  
94 sq m | 1012 sq ft  
(including PES of 12 sq m/129 sq ft)  
#01-21





# 3 Bedroom



## TYPE C5

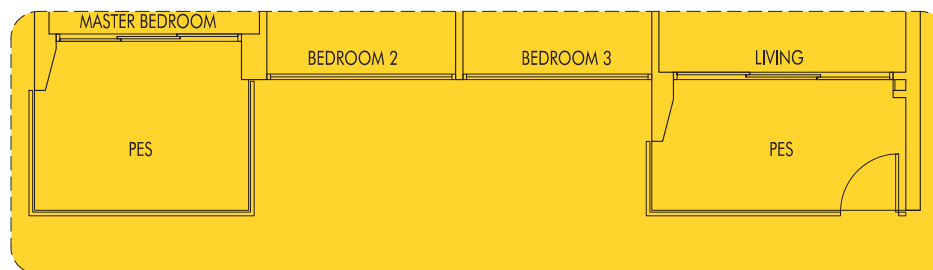
93 sq m | 1001 sq ft

#06-47 to #20-47 (mirror)

#06-54 to #20-54

#06-55 to #19-55 (mirror)

#06-62 to #19-62



## TYPE C5P

100 sq m | 1076 sq ft

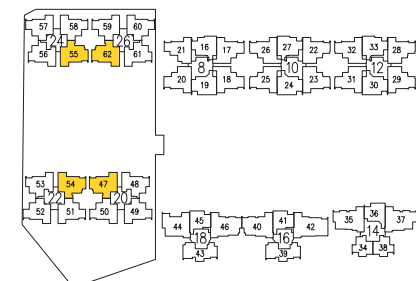
(including PES of 13 sq m/140 sq ft)

#05-47 (mirror)

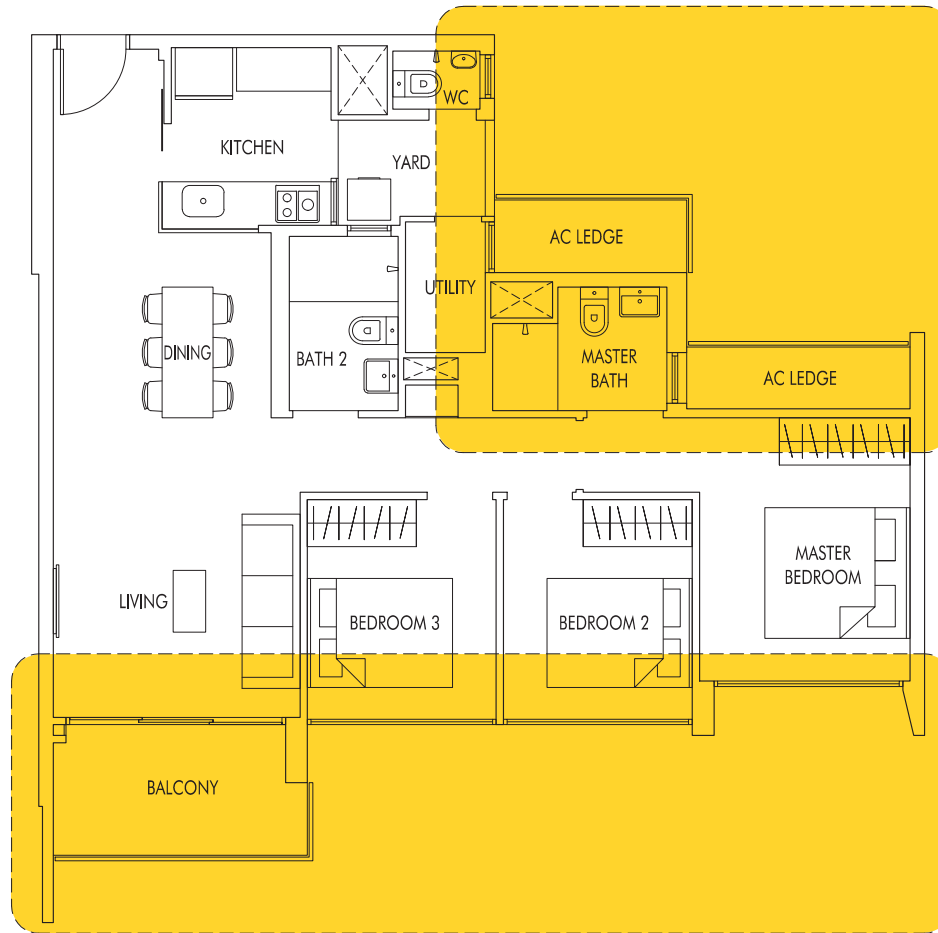
#05-54

#05-55 (mirror)

#05-62



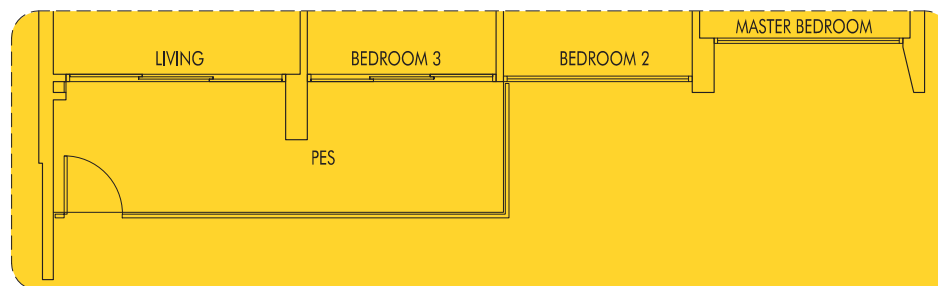
# 3 Bedroom



## TYPE C6

97 sq m | 1044 sq ft

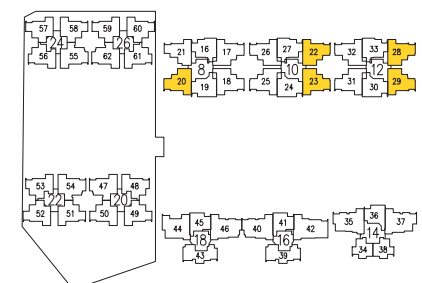
- #02-20 to #22-20 (mirror)
- #02-22 to #24-22 (mirror)
- #02-23 to #23-23
- #02-28 to #23-28 (mirror)
- #02-29 to #23-29



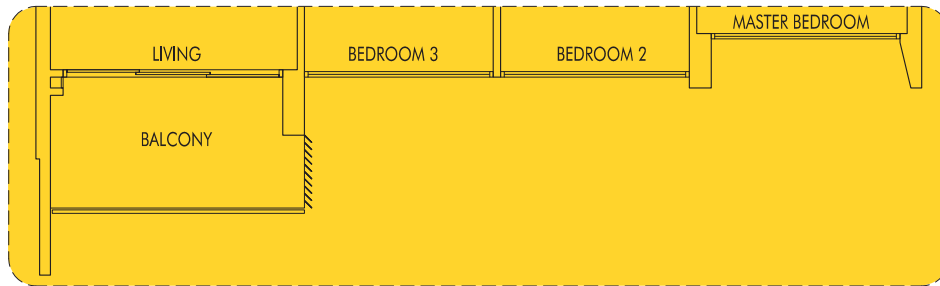
## TYPE C6P

102 sq m | 1098 sq ft  
(including PES of 11 sq m/118 sq ft)

- #01-20 (mirror)
- #01-22 (mirror)
- #01-23
- #01-28 (mirror)
- #01-29



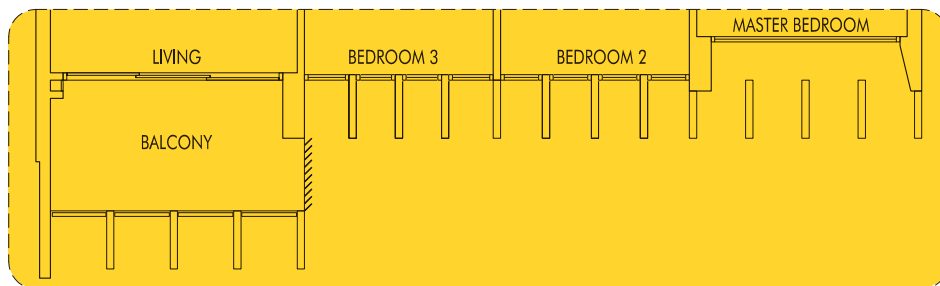
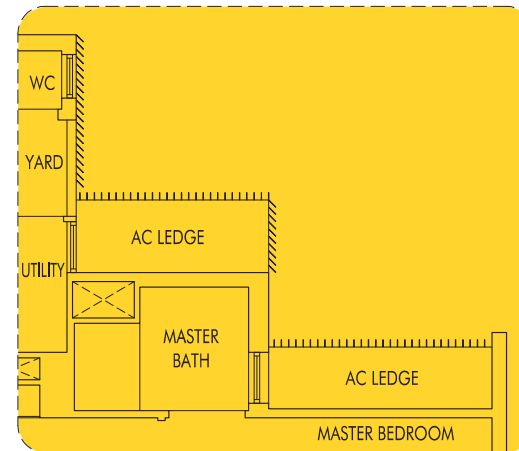
# 3 Bedroom



## TYPE C6a

97 sq m | 1044 sq ft  
WITH VERTICAL LOUVERS & FINS  
AS PER DSTA REQUIREMENT

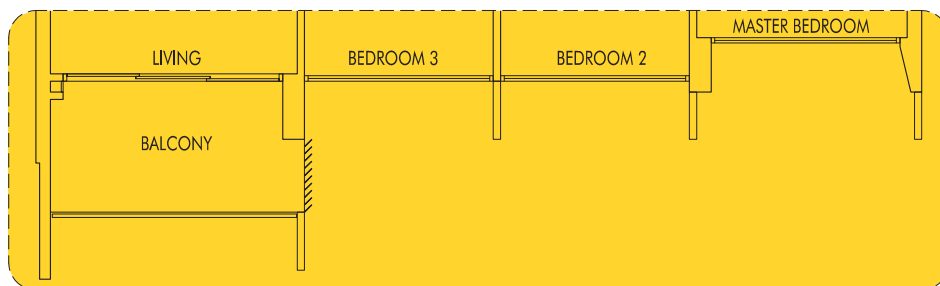
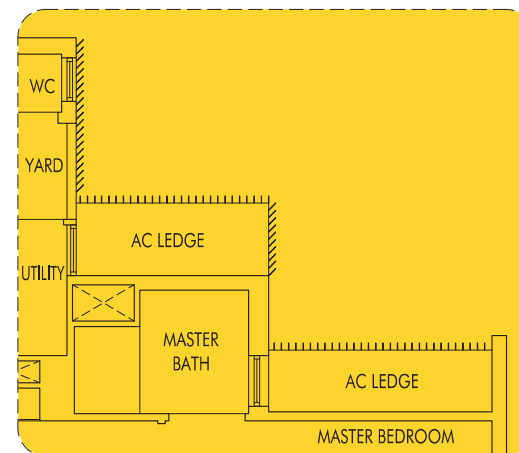
#24-28 (mirror)



## TYPE C6b

97 sq m | 1044 sq ft  
WITH VERTICAL LOUVERS & FINS  
AS PER DSTA REQUIREMENT

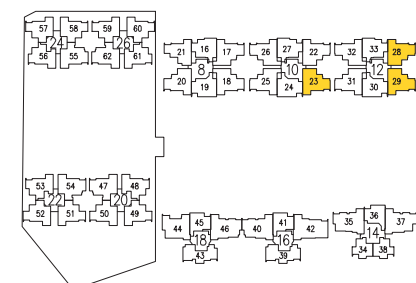
#24-29



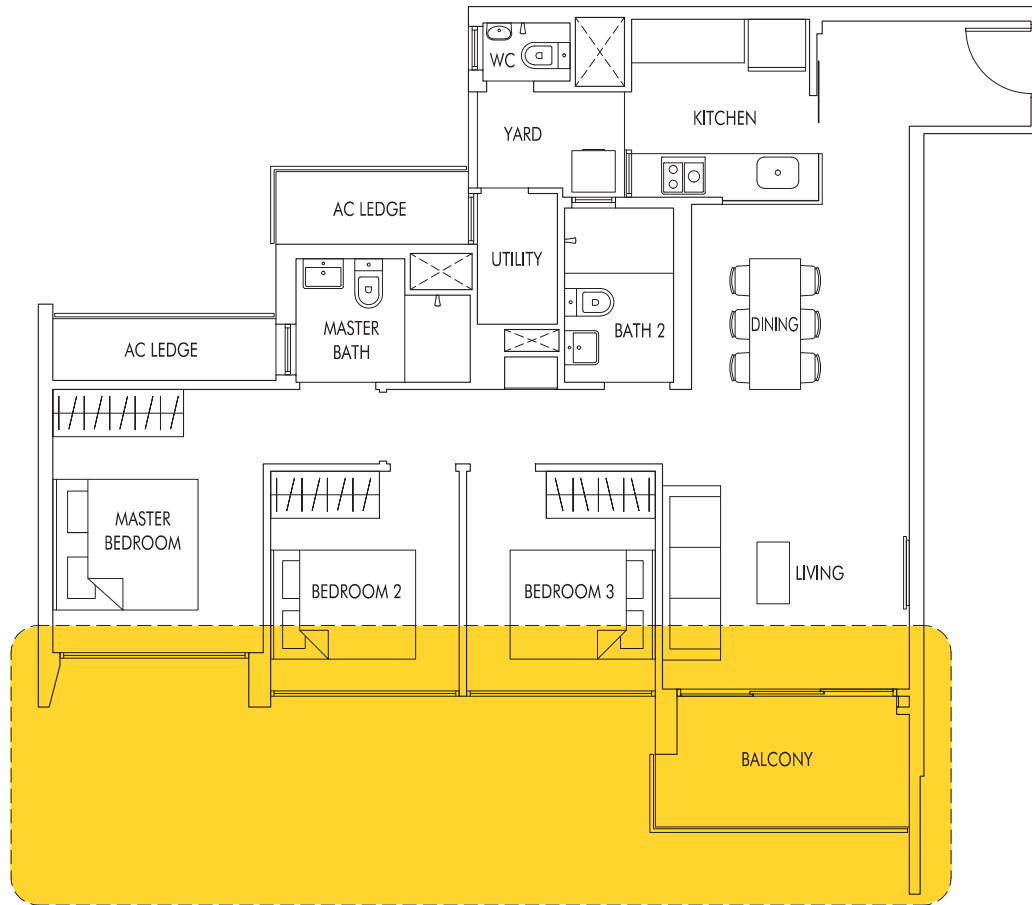
## TYPE C6c

97 sq m | 1044 sq ft  
WITH VERTICAL LOUVERS & FINS  
AS PER DSTA REQUIREMENT

#24-23



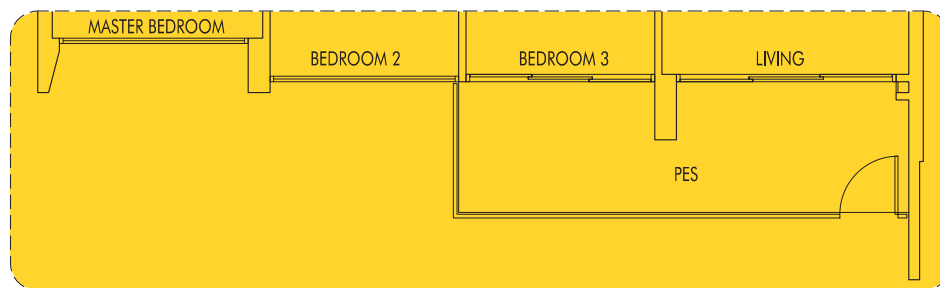
# 3 Bedroom



## TYPE C7

99 sq m | 1066 sq ft

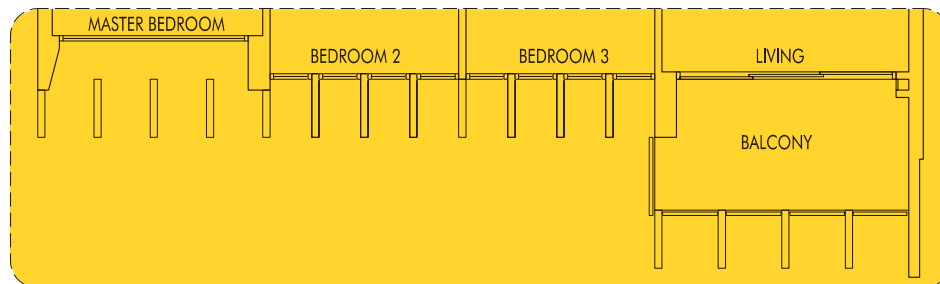
#02-17 to #22-17  
 #02-18 to #22-18 (mirror)  
 #02-31 to #23-31  
 #02-32 to #24-32 (mirror)



## TYPE C7P

104 sq m | 1119 sq ft  
 (including PES of 11 sq m/118 sq ft)

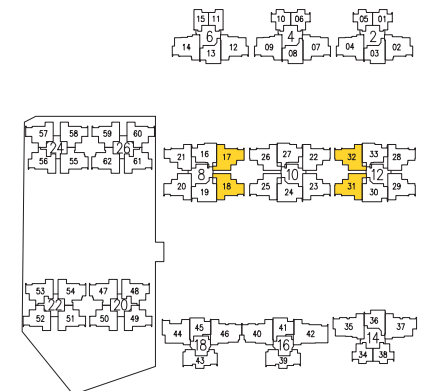
#01-17  
 #01-18 (mirror)  
 #01-31  
 #01-32 (mirror)



## TYPE C7a

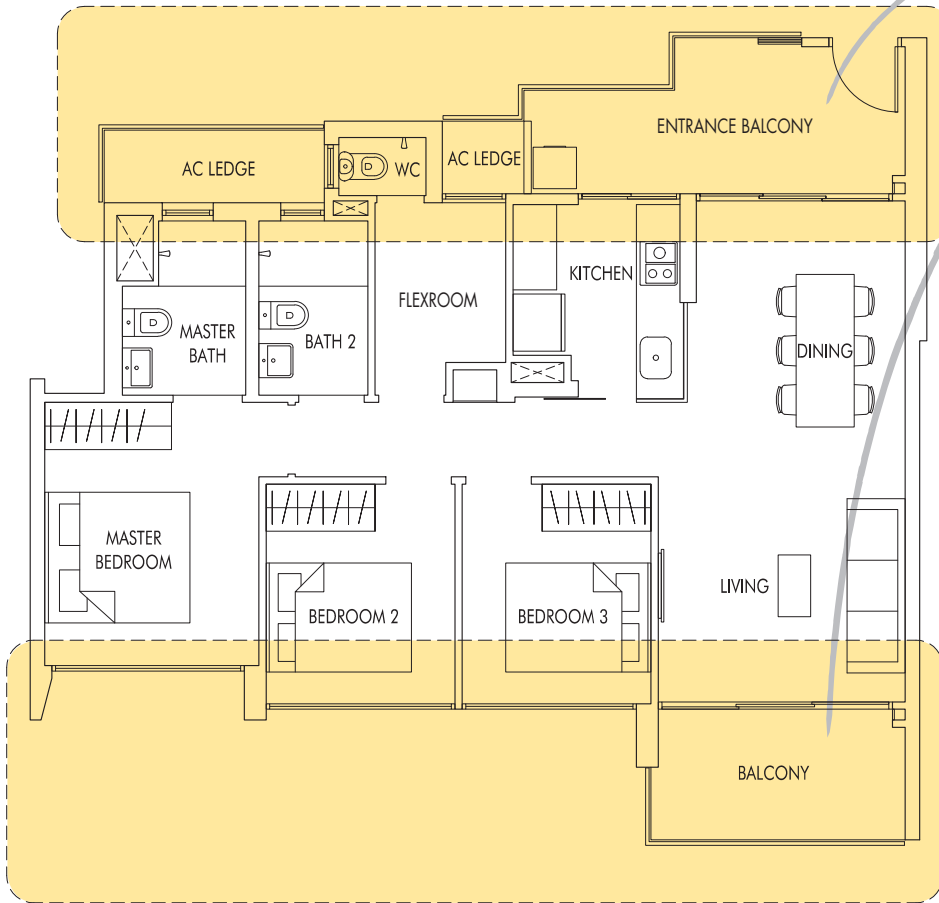
99 sq m | 1066 sq ft  
 WITH VERTICAL FINS  
 AS PER DSTA REQUIREMENT

#24-31



# 3 + FlexRoom

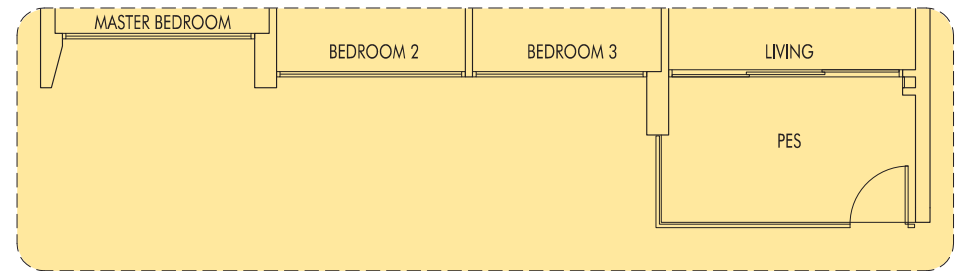
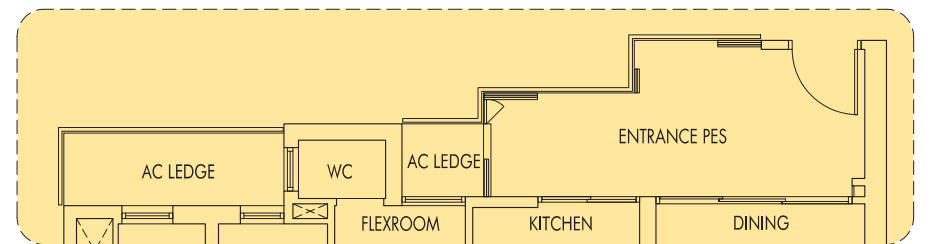
"With this cross-ventilation layout, our family enjoys a breezier and airier home, and of course, savings on electricity bills."



## TYPE C8

102 sq m | 1098 sq ft

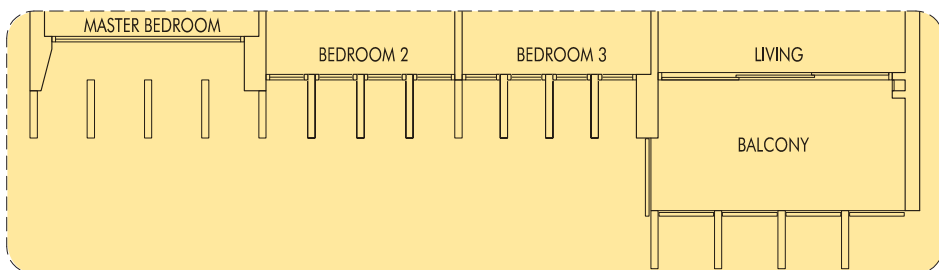
#02-04 to #23-04  
#02-09 to #25-09  
#02-14 to #25-14



## TYPE C8P

102 sq m | 1098 sq ft  
(including PES of 17 sq m/183 sq ft)

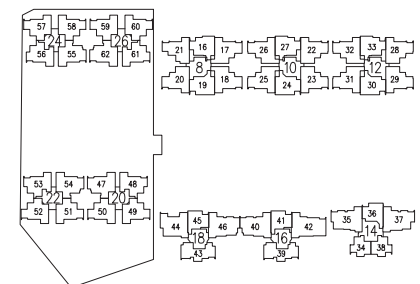
#01-04  
#01-09  
#01-14

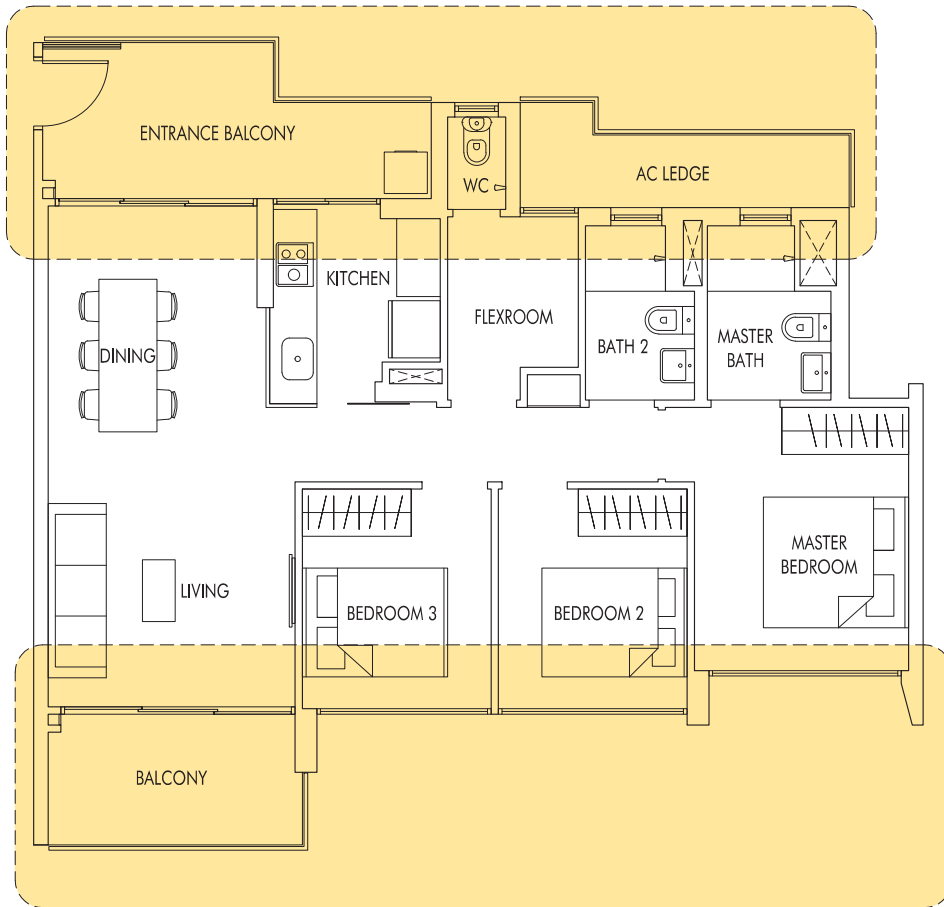


## TYPE C8a

102 sq m | 1098 sq ft  
WITH VERTICAL FINS  
AS PER DSTA REQUIREMENT

#24-04

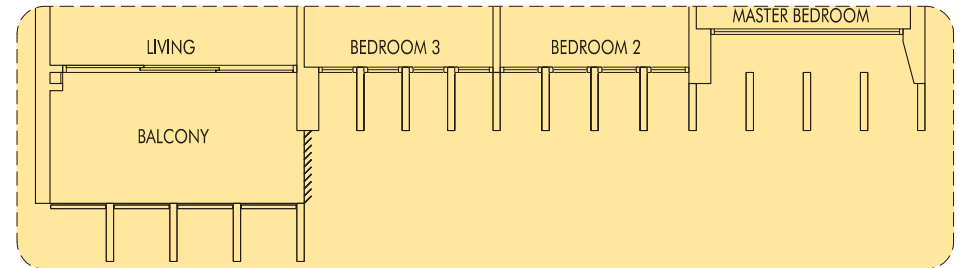




**TYPE C9**

102 sq m | 1098 sq ft

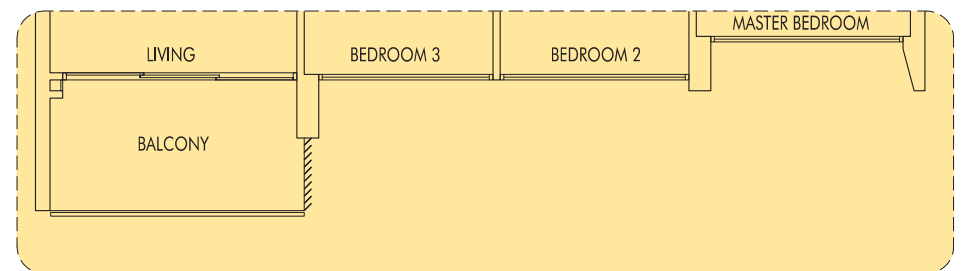
#02-02 to #23-02  
 #02-07 to #23-07  
 #02-12 to #23-12



**TYPE C9b**

102 sq m | 1098 sq ft  
 WITH VERTICAL LOUVERS & FINS  
 AS PER DSTA REQUIREMENT

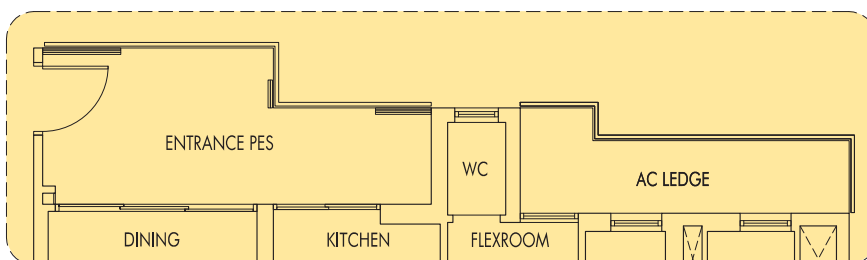
#24-07  
 #25-07



**TYPE C9c**

102 sq m | 1098 sq ft  
 WITH VERTICAL LOUVERS  
 AS PER DSTA REQUIREMENT

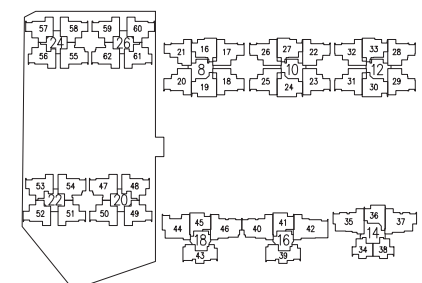
#24-12  
 #25-12



**TYPE C9P**

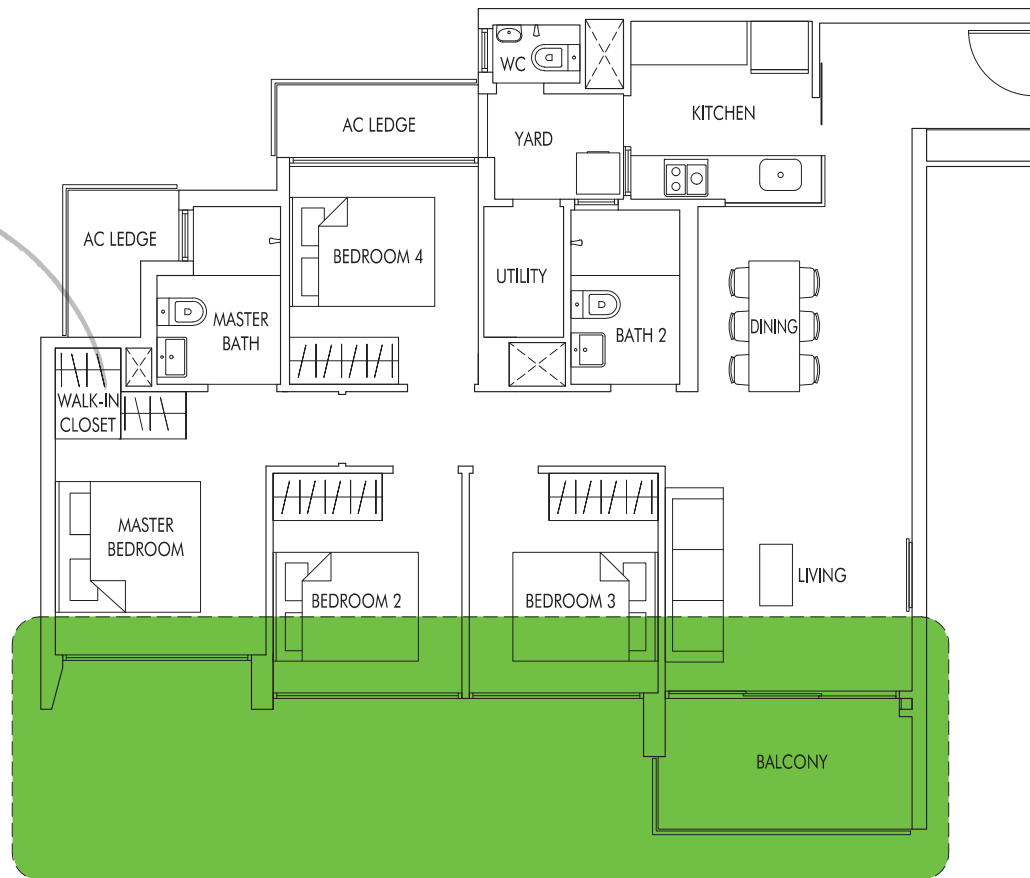
102 sq m | 1098 sq ft  
 (including PES of 17 sq m/183 sq ft)

#01-02  
 #01-07  
 #01-12



# 4 Bedroom

"Finally, I can have the luxury of having a walk-in wardrobe in my master bedroom."

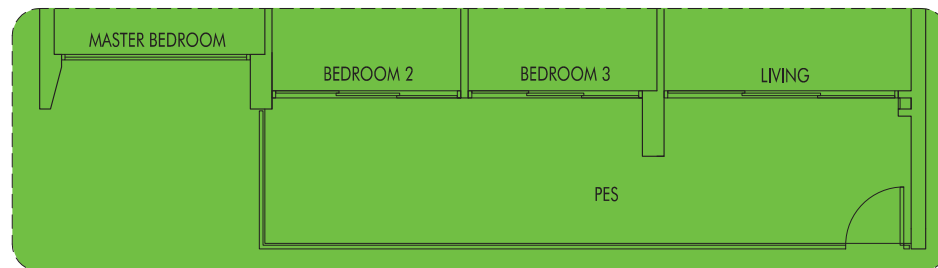


## TYPE D1

108 sq m | 1163 sq ft

#02-25 to #24-25

#02-26 to #24-26 (mirror)



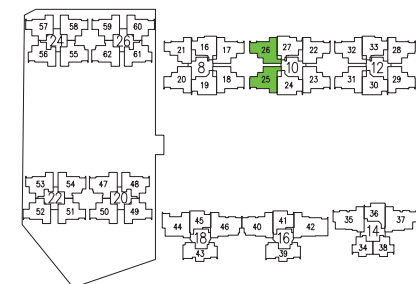
## TYPE D1P

120 sq m | 1292 sq ft

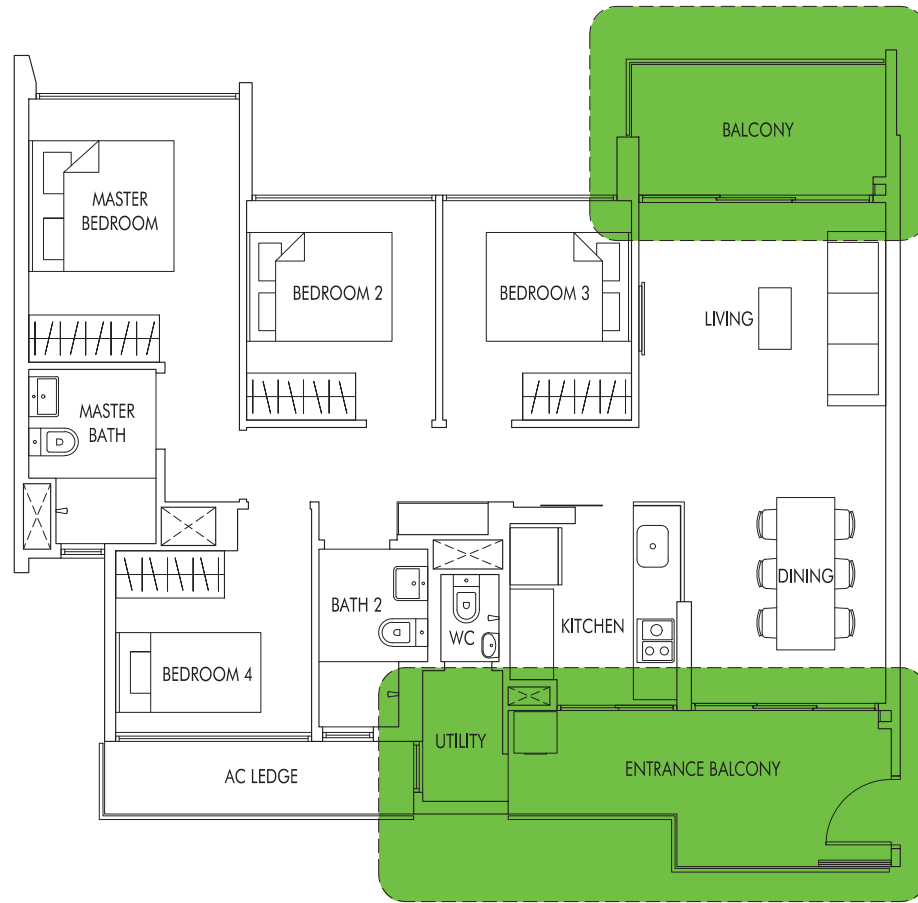
(including PES of 18 sq m/194 sq ft)

#01-25

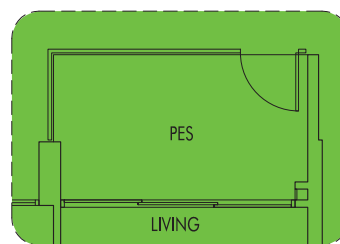
#01-26 (mirror)



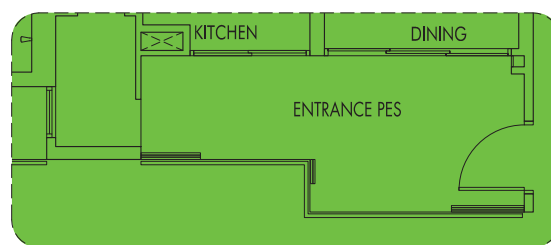
# 4 Bedroom



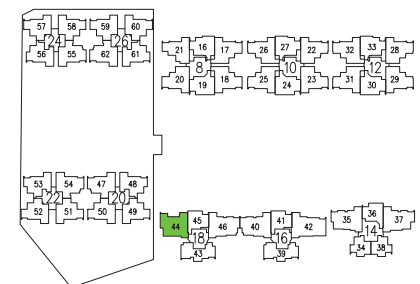
**TYPE D2**  
109 sq m | 1173 sq ft  
#02-44 to #21-44



**TYPE D2P**  
110 sq m | 1184 sq ft  
(including PES of 18 sq m/194 sq ft)

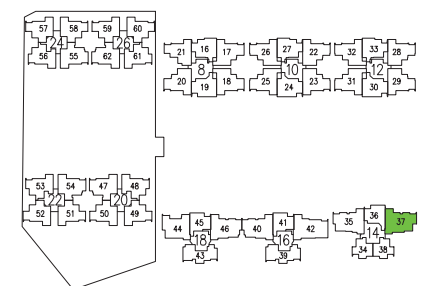
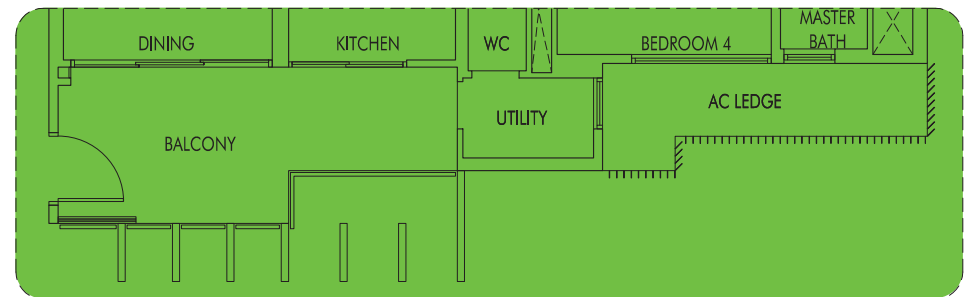
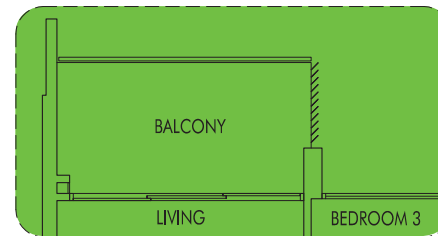
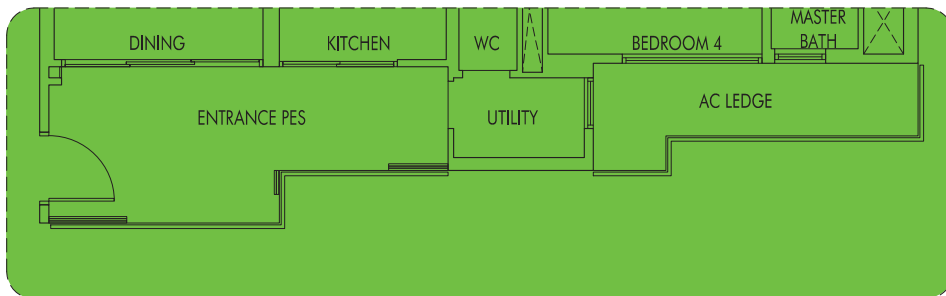
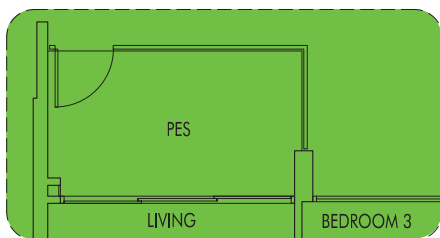
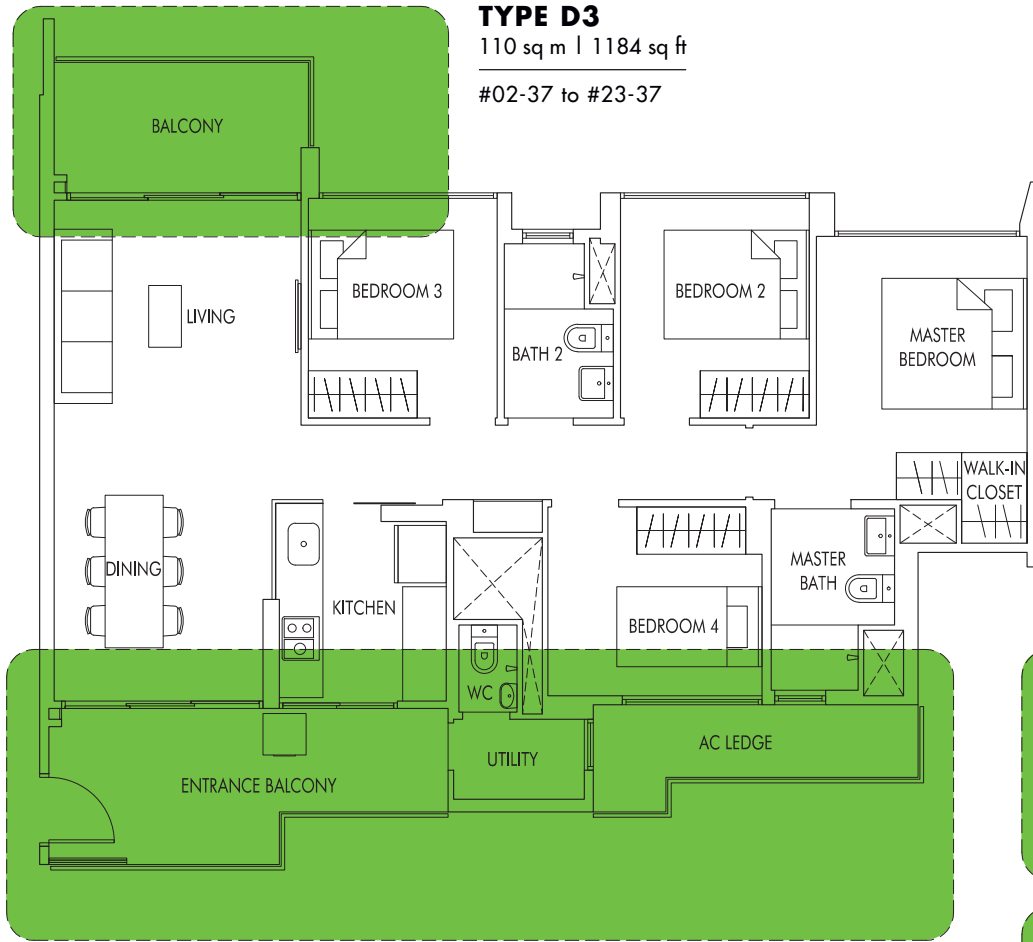


#01-44



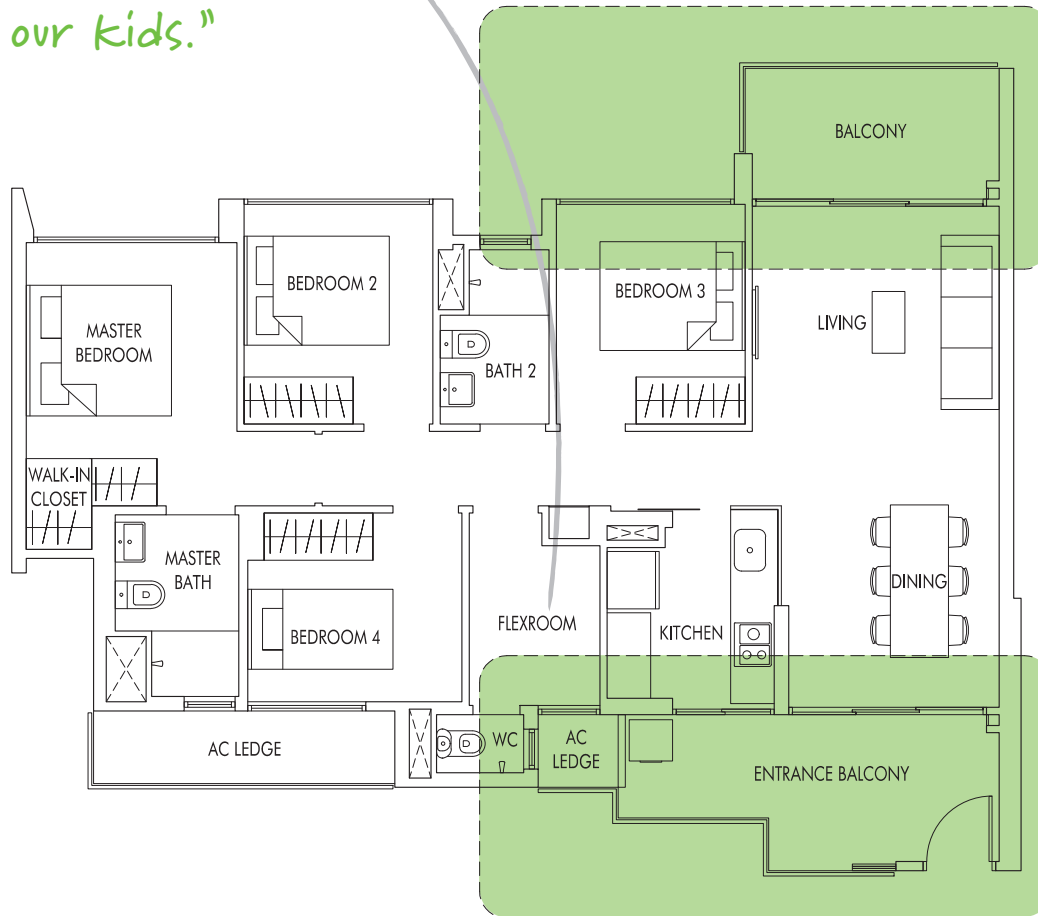


# 4 Bedroom

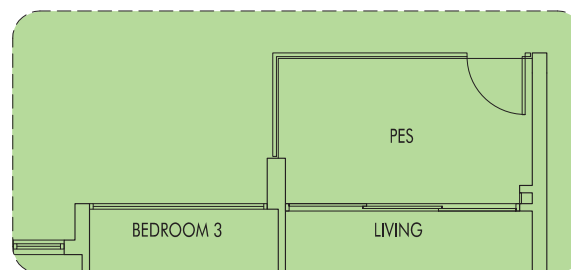


# 4 + FlexRoom

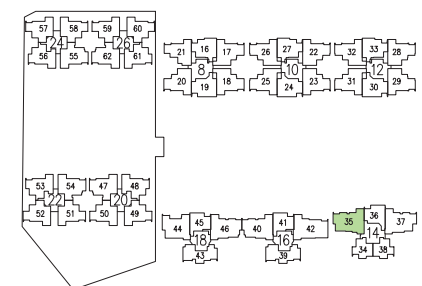
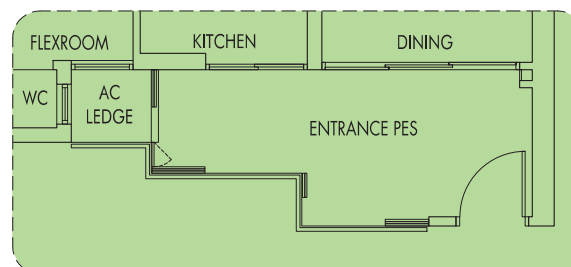
"We can use the FlexRoom as a game room or an extra bedroom for our kids."



**TYPE D4**  
113 sq m | 1216 sq ft  
#02-35 to #25-35

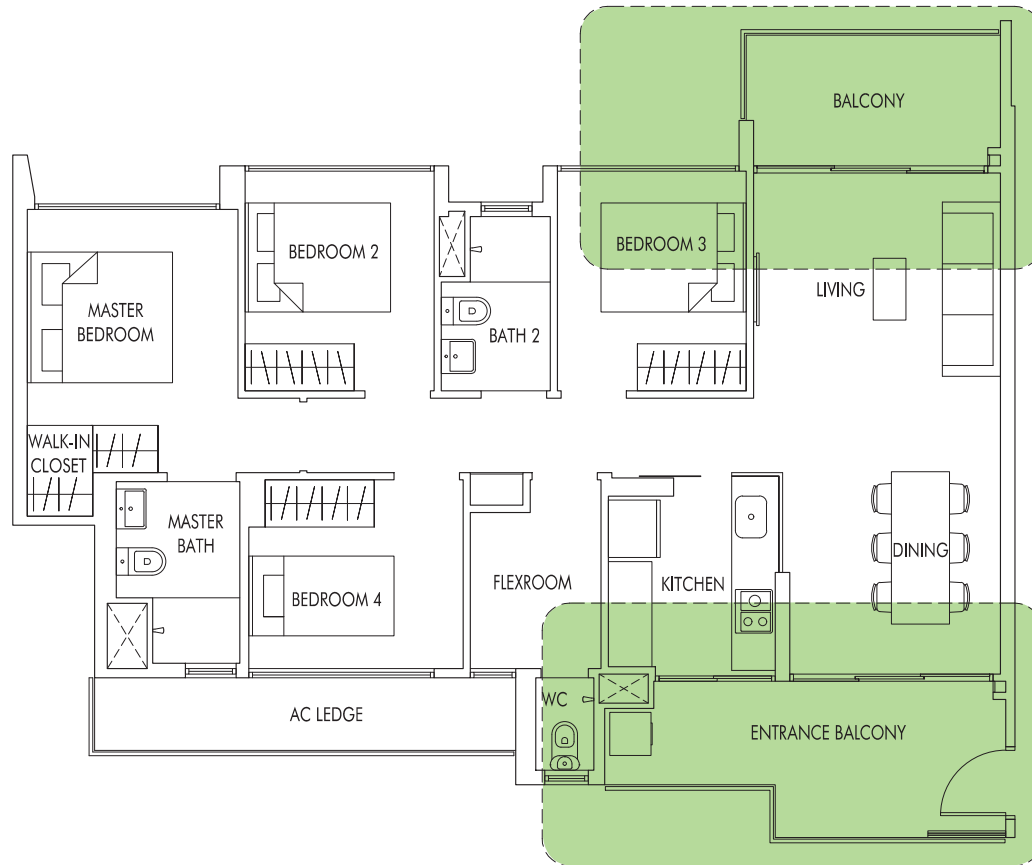


**TYPE D4P**  
114 sq m | 1227 sq ft  
(including PES of 18 sq m/194 sq ft)  
#01-35





# 4 + FlexRoom

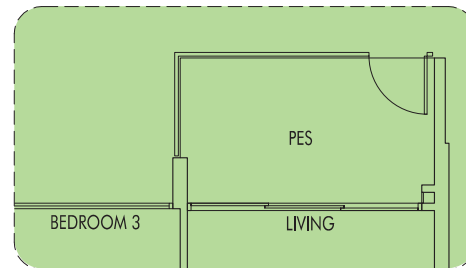


## TYPE D5

114 sq m | 1227 sq ft

#02-40 to #21-40

#02-46 to #21-46 (mirror)



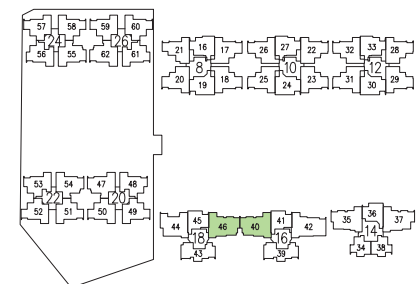
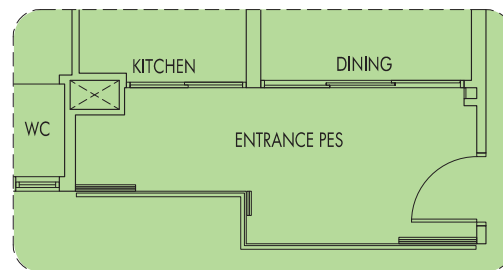
## TYPE D5P

115 sq m | 1238 sq ft

(including PES of 18 sq m/194 sq ft)

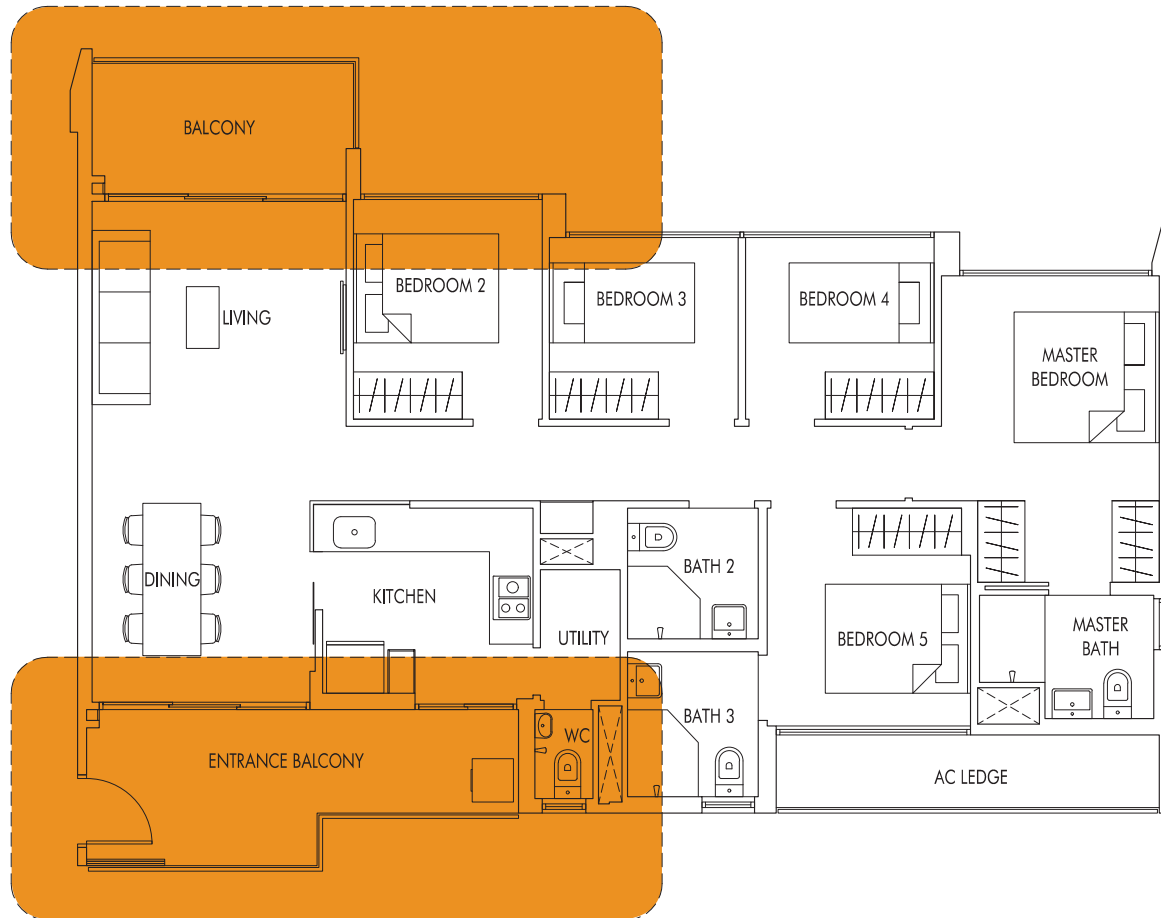
#01-40

#01-46 (mirror)



# 5 Bedroom

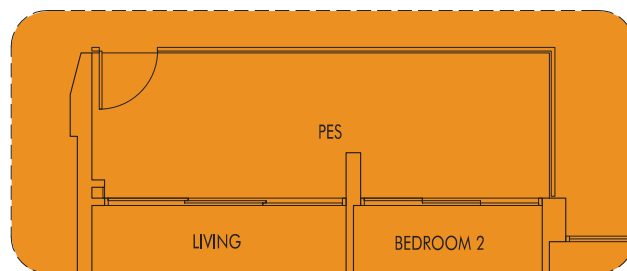
"Living in a 5-Bedroom EC unit is a rarity. Now everyone, including Gramps, can have their own room!"



## TYPE E1

128 sq m | 1378 sq ft

#02-42 to #21-42



## TYPE E1P

134 sq m | 1442 sq ft

(including PES of 24 sq m/258 sq ft)

#01-42

